



Multichannel Remote/Local Temperature Sensor

MAX1668/MAX1805†

General Description

The MAX1668/MAX1805 are precise multichannel digital thermometers that report the temperature of all remote sensors and their own packages. The remote sensors are diode-connected transistors—typically low-cost, easily mounted 2N3904 NPN types—that replace conventional thermistors or thermocouples. Remote accuracy is $\pm 3^{\circ}\text{C}$ for multiple transistor manufacturers, with no calibration needed. The remote channels can also measure the die temperature of other ICs, such as microprocessors, that contain an on-chip, diode-connected transistor.

The 2-wire serial interface accepts standard System Management Bus (SMBus™) Write Byte, Read Byte, Send Byte, and Receive Byte commands to program the alarm thresholds and to read temperature data. The data format is 7 bits plus sign, with each bit corresponding to 1°C , in two's-complement format.

The MAX1668/MAX1805 are available in small, 16-pin QSOP surface-mount packages.

Applications

| | |
|--------------------------------|----------------------------------|
| Desktop and Notebook Computers | Central Office Telecom Equipment |
| LAN Servers | Test and Measurement |
| Industrial Controls | Multichip Modules |

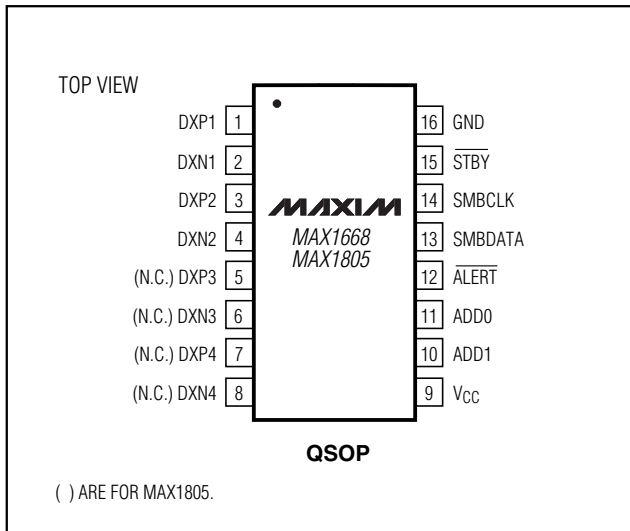
Features

- ◆ Multichannel
 - 4 Remote, 1 Local (MAX1668)
 - 2 Remote, 1 Local (MAX1805)
- ◆ No Calibration Required
- ◆ SMBus 2-Wire Serial Interface
- ◆ Programmable Under/Overtemperature Alarms
- ◆ Supports SMBus Alert Response
- ◆ Accuracy
 - $\pm 2^{\circ}\text{C}$ ($+60^{\circ}\text{C}$ to $+100^{\circ}\text{C}$, local)
 - $\pm 3^{\circ}\text{C}$ (-40°C to $+125^{\circ}\text{C}$, local)
 - $\pm 3^{\circ}\text{C}$ ($+60^{\circ}\text{C}$ to $+100^{\circ}\text{C}$, remote)
- ◆ $3\mu\text{A}$ (typ) Standby Supply Current
- ◆ $700\mu\text{A}$ (max) Supply Current
- ◆ Small, 16-Pin QSOP Package

Ordering Information

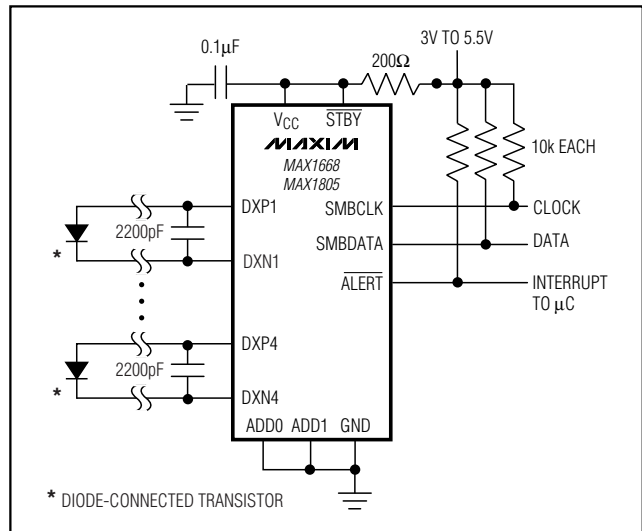
| PART | TEMP. RANGE | PIN-PACKAGE |
|------------|---|-------------|
| MAX1668MEE | -55°C to $+125^{\circ}\text{C}$ | 16 QSOP |
| MAX1805MEE | -55°C to $+125^{\circ}\text{C}$ | 16 QSOP |

Pin Configurations



SMBus is a trademark of Intel Corp.

Typical Operating Circuit



†Patents Pending



Maxim Integrated Products 1

For free samples and the latest literature, visit www.maxim-ic.com or phone 1-800-998-8800.
 For small orders, phone 1-800-835-8769.

Multichannel Remote/Local Temperature Sensor

ABSOLUTE MAXIMUM RATINGS

| | | | |
|---|-----------------------------------|---|-----------------|
| V _{CC} to GND | -0.3V to +6V | Operating Temperature Range | -55°C to +125°C |
| DXP ₋ , ADD ₋ , STBY to GND | -0.3V to (V _{CC} + 0.3V) | Junction Temperature | +150°C |
| DXN ₋ to GND | -0.3V to +0.8V | Storage Temperature Range | -65°C to +150°C |
| SMBCLK, SMBDATA, ALERT to GND | -0.3V to +6V | Lead Temperature (soldering, 10s) | +300°C |
| SMBDATA, ALERT Current | -1mA to +50mA | | |
| DXN ₋ Current | ±1mA | | |
| Continuous Power Dissipation (T _A = +70°C) | | | |
| QSOP (derate 8.30mW/°C above +70°C) | 667mW | | |

Stresses beyond those listed under "Absolute Maximum Ratings" may cause permanent damage to the device. These are stress ratings only, and functional operation of the device at these or any other conditions beyond those indicated in the operational sections of the specifications is not implied. Exposure to absolute maximum rating conditions for extended periods may affect device reliability.

ELECTRICAL CHARACTERISTICS

(V_{CC} = +3.3V, $\overline{\text{STBY}}$ = V_{CC}, configuration byte = X0XXXX00, T_A = 0°C to +125°C, unless otherwise noted.)

| PARAMETER | CONDITIONS | | MIN | TYP | MAX | UNITS |
|---|--|---|------|-----|------|-------|
| ADC AND POWER SUPPLY | | | | | | |
| Temperature Resolution (Note 1) | Monotonicity guaranteed | | 8 | | | Bits |
| Initial Temperature Error, Local Diode (Note 2) | T _A = +60°C to +100°C | | -2 | | 2 | °C |
| | T _A = 0°C to +125°C | | -3 | | 3 | |
| Temperature Error, Remote Diode (Notes 2 and 3) | T _R = +60°C to +100°C | | -3 | | 3 | °C |
| | T _R = -55°C to +125°C | | -5 | | 5 | |
| Temperature Error, Local Diode (Notes 1 and 2) | Including long-term drift | T _A = +60°C to +100°C | -2.5 | | 2.5 | °C |
| | | T _A = 0°C to +85°C | -3.5 | | 3.5 | |
| Supply-Voltage Range | | | 3.0 | | 5.5 | V |
| Undervoltage Lockout Threshold | V _{CC} input, disables A/D conversion, rising edge | | 2.60 | 2.8 | 2.95 | V |
| Undervoltage Lockout Hysteresis | | | | 50 | | mV |
| Power-On Reset Threshold (POR) | V _{CC} , falling edge | | 1.3 | 1.8 | 2.3 | V |
| POR Threshold Hysteresis | | | | 50 | | mV |
| Standby Supply Current | Logic inputs forced to V _{CC} or GND | SMBus static | | 3 | 10 | µA |
| | | Hardware or software standby, SMBCLK at 10kHz | | 5 | 12 | |
| Average Operating Supply Current | Average measured over 4s; logic inputs forced V _{CC} or GND | | | 400 | 700 | µA |
| Conversion Time | From stop bit to conversion complete (all channels) | | 260 | 320 | 380 | ms |
| Remote-Diode Source Current | DXP ₋ forced to 1.5V | High level (POR state) | 70 | 100 | 130 | µA |
| | | Low level (POR state) | 7 | 10 | 13 | |
| | | Configuration byte = X0XXXX10, high level | | 200 | | |
| | | Configuration byte = X0XXXX01, high level | | 50 | | |
| DXN ₋ Source Voltage | | | | 0.7 | | V |
| Address Pin Bias Current | ADD0, ADD1; momentary upon power-on reset | | | 160 | | µA |

Multichannel Remote/Local Temperature Sensor

MAX1668/MAX1805

ELECTRICAL CHARACTERISTICS (continued)

(V_{CC} = +3.3V, \overline{STBY} = V_{CC}, configuration byte = X0XXXX00, T_A = 0°C to +125°C, unless otherwise noted.)

| PARAMETER | CONDITIONS | MIN | TYP | MAX | UNITS |
|--|---|-----|-----|-----|-------|
| SMBus INTERFACE | | | | | |
| Logic Input High Voltage | \overline{STBY} , SMBCLK, SMBDATA; V _{CC} = 3V to 5.5V | 2.2 | | | V |
| Logic Input Low Voltage | \overline{STBY} , SMBCLK, SMBDATA; V _{CC} = 3V to 5.5V | | | 0.8 | V |
| Logic Output Low Sink Current | \overline{ALERT} , SMBDATA forced to 0.4V | 6 | | | mA |
| \overline{ALERT} Output High Leakage Current | \overline{ALERT} forced to 5.5V | | | 1 | μA |
| Logic Input Current | Logic inputs forced to V _{CC} or GND | -1 | | 1 | μA |
| SMBus Input Capacitance | SMBCLK, SMBDATA | | 5 | | pF |
| SMBus Clock Frequency | (Note 4) | DC | | 100 | kHz |
| SMBCLK Clock Low Time | t _{LOW} , 10% to 10% points | 4.7 | | | μs |
| SMBCLK Clock High Time | t _{HIGH} , 90% to 90% points | 4 | | | μs |
| SMBus Start-Condition Setup Time | | 4.7 | | | μs |
| SMBus Repeated Start-Condition Setup Time | t _{SU:STA} , 90% to 90% points | 250 | | | ns |
| SMBus Start-Condition Hold Time | t _{HD:STA} , 10% of SMBDATA to 90% of SMBCLK | 4 | | | μs |
| SMBus Stop-Condition Setup Time | t _{SU:STO} , 90% of SMBCLK to 10% of SMBDATA | 4 | | | μs |
| SMBus Data Valid to SMBCLK Rising-Edge Time | t _{SU:DAT} , 10% or 90% of SMBDATA to 10% of SMBCLK | 250 | | | ns |
| SMBus Data-Hold Time | t _{HD:DAT} , slave receive (Note 5) | 0 | | | ns |
| SMBCLK Falling Edge to SMBus Data-Valid Time | Master clocking in data | | | 1 | μs |

ELECTRICAL CHARACTERISTICS

(V_{CC} = +5V, \overline{STBY} = V_{CC}, configuration byte = X0XXXX00, T_A = -55°C to +125°C, unless otherwise noted.) (Note 6)

| PARAMETER | CONDITIONS | MIN | TYP | MAX | UNITS |
|---|--|-----|-----|-----|-------|
| ADC AND POWER SUPPLY | | | | | |
| Temperature Resolution | Monotonicity guaranteed | 8 | | | Bits |
| Initial Temperature Error, Local Diode (Note 2) | T _A = +60°C to +100°C | -2 | | 2 | °C |
| | T _A = -55°C to +125°C | -3 | | 3 | |
| Temperature Error, Remote Diode (Notes 2 and 3) | T _R = +60°C to +100°C | -3 | | 3 | °C |
| | T _R = -55°C to +125°C | -5 | | 5 | |
| Supply-Voltage Range | | 4.5 | | 5.5 | V |
| Conversion Time | From stop bit to conversion complete (both channels) | 260 | | 380 | ms |

Multichannel Remote/Local Temperature Sensor

ELECTRICAL CHARACTERISTICS (continued)

($V_{CC} = +5V$, $\overline{STBY} = V_{CC}$, configuration byte = X0XXXX00, $T_A = -55^{\circ}C$ to $+125^{\circ}C$, unless otherwise noted.) (Note 6)

| PARAMETER | CONDITIONS | MIN | TYP | MAX | UNITS |
|--|--|-----|-----|-----|---------|
| SMBus INTERFACE | | | | | |
| Logic Input High Voltage | \overline{STBY} , SMBCLK, SMBDATA $V_{CC} = 4.5V$ to $5.5V$ | 2.4 | | | V |
| Logic Input Low Voltage | \overline{STBY} , SMBCLK, SMBDATA; $V_{CC} = 4.5V$ to $5.5V$ | | | 0.8 | V |
| Logic Output Low Sink Current | \overline{ALERT} , SMBDATA forced to 0.4V | 6 | | | mA |
| \overline{ALERT} Output High Leakage Current | \overline{ALERT} forced to 5.5V | | | 1 | μA |
| Logic Input Current | Logic inputs forced to V_{CC} or GND | -2 | | 2 | μA |

Note 1: Guaranteed by design, but not production tested.

Note 2: Quantization error is not included in specifications for temperature accuracy. For example, if the MAX1668/MAX1805 device temperature is exactly $+66.7^{\circ}C$, the ADC may report $+66^{\circ}C$, $+67^{\circ}C$, or $+68^{\circ}C$ (due to the quantization error plus the $+1/2^{\circ}C$ offset used for rounding up) and still be within the guaranteed $\pm 1^{\circ}C$ error limits for the $+60^{\circ}C$ to $+100^{\circ}C$ temperature range. See Table 2.

Note 3: A remote diode is any diode-connected transistor from Table 1. T_R is the junction temperature of the remote diode. See *Remote Diode Selection* for remote-diode forward-voltage requirements.

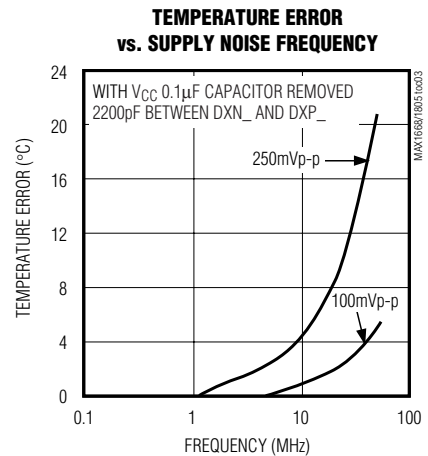
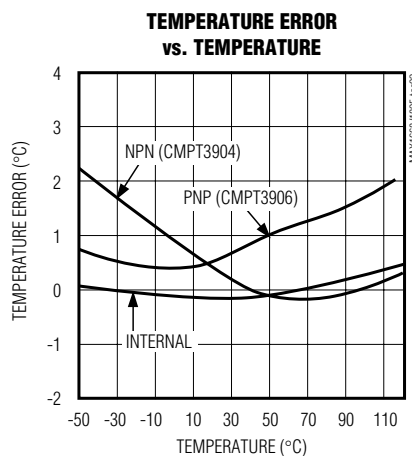
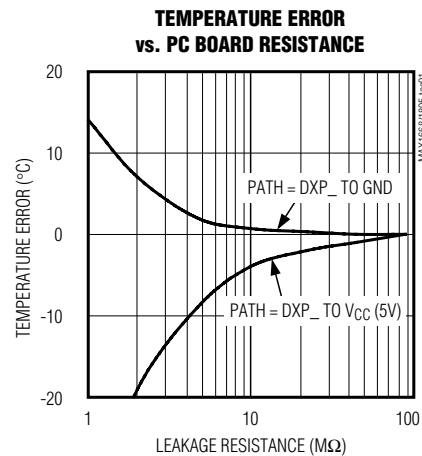
Note 4: The SMBus logic block is a static design that works with clock frequencies down to DC. While slow operation is possible, it violates the 10kHz minimum clock frequency and SMBus specifications, and may monopolize the bus.

Note 5: Note that a transition must internally provide at least a hold time in order to bridge the undefined region (300ns max) of SMBCLK's falling edge $t_{HD:DAT}$.

Note 6: Specifications from $-55^{\circ}C$ to $+125^{\circ}C$ are guaranteed by design, not production tested.

Typical Operating Characteristics

(Typical Operating Circuit, $V_{CC} = +5V$, $\overline{STBY} = V_{CC}$, configuration byte = X0XXXX00, $T_A = +25^{\circ}C$, unless otherwise noted.)

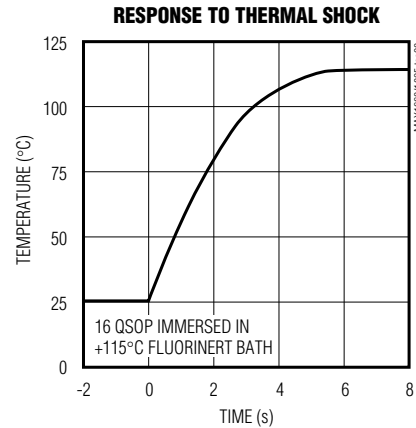
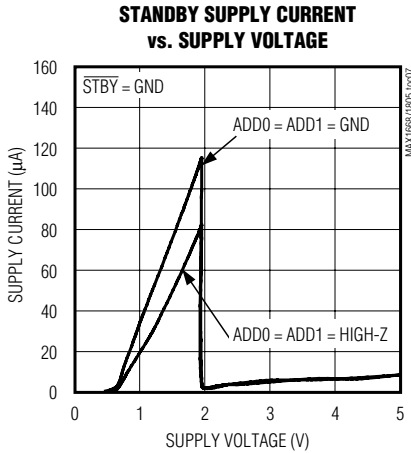
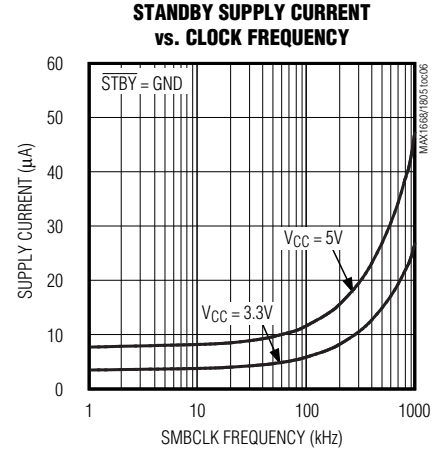
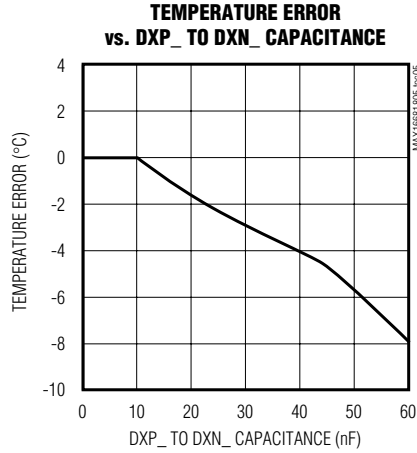
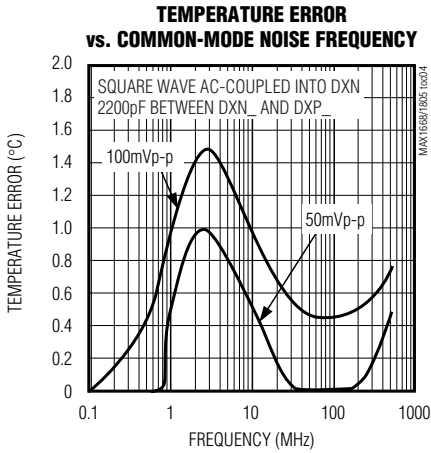


Multichannel Remote/Local Temperature Sensor

Typical Operating Characteristics (continued)

(Typical Operating Circuit, $V_{CC} = +5V$, $STBY = V_{CC}$, configuration byte = X0XXXX00, $T_A = +25^\circ C$, unless otherwise noted.)

MAX1668/MAX1805



Multichannel Remote/Local Temperature Sensor

Pin Description

| PIN | | | FUNCTION |
|------------|---------|---------------------------|--|
| MAX1668 | MAX1805 | NAME | |
| — | 5–8 | N.C. | No Connection. Not internally connected. May be used for PC board trace routing. |
| 9 | 9 | VCC | Supply Voltage Input, 3V to 5.5V. Bypass to GND with a 0.1 μ F capacitor. A 200 Ω series resistor is recommended but not required for additional noise filtering. |
| 1, 3, 5, 7 | 1, 3 | DXP_ | Combined Current Source and A/D Positive Input for remote-diode channel. Do not leave DXP floating; tie DXP to DXN if no remote diode is used. Place a 2200pF capacitor between DXP and DXN for noise filtering. |
| 2, 4, 6, 8 | 2, 4 | DXN_ | Combined Current Sink and A/D Negative Input. DXN is normally biased to a diode voltage above ground. |
| 10 | 10 | ADD1 | SMBus Address Select Pin (Table 8). ADD0 and ADD1 are sampled upon power-up. Excess capacitance (>50pF) at the address pins when floating may cause address-recognition problems. |
| 11 | 16 | GND | Ground |
| 16 | 11 | ADD0 | SMBus Slave Address Select Pin |
| 12 | 12 | $\overline{\text{ALERT}}$ | SMBus Alert (Interrupt) Output, Open Drain |
| 13 | 13 | SMBDATA | SMBus Serial-Data Input/Output, Open Drain |
| 14 | 14 | SMBCLK | SMBus Serial-Clock Input |
| 15 | 15 | $\overline{\text{STBY}}$ | Hardware Standby Input. Temperature and comparison threshold data are retained in standby mode. Low = standby mode, high = operate mode. |

Detailed Description

The MAX1668/MAX1805 are temperature sensors designed to work in conjunction with an external microcontroller (μ C) or other intelligence in thermostatic, process-control, or monitoring applications. The μ C is typically a power-management or keyboard controller, generating SMBus serial commands by “bit-banging” general-purpose input-output (GPIO) pins or via a dedicated SMBus interface block.

These devices are essentially 8-bit serial analog-to-digital converters (ADCs) with sophisticated front ends. However, the MAX1668/MAX1805 also contain a switched current source, a multiplexer, an ADC, an SMBus interface, and associated control logic (Figure 1). In the MAX1668, temperature data from the ADC is loaded into five data registers, where it is automatically compared with data previously stored in 10 over/under-temperature alarm registers. In the MAX1805, temperature data from the ADC is loaded into three data registers, where it is automatically compared with data previously stored in six over/under-temperature alarm registers.

ADC and Multiplexer

The ADC is an averaging type that integrates over a 64ms period (each channel, typical), with excellent noise rejection.

The multiplexer automatically steers bias currents through the remote and local diodes, measures their forward voltages, and computes their temperatures. Each channel is automatically converted once the conversion process has started. If any one of the channels is not used, the device still performs measurements on these channels, and the user can ignore the results of the unused channel. If any remote diode channel is unused, tie DXP_ to DXN_ rather than leaving the pins open.

The DXN_ input is biased at 0.65V above ground by an internal diode to set up the analog-to-digital (A/D) inputs for a differential measurement. The worst-case DXP_ to DXN differential input voltage range is 0.25V to 0.95V.

Excess resistance in series with the remote diode causes about +1/2 $^{\circ}$ C error per ohm. Likewise, 200 μ V of offset voltage forced on DXP_ to DXN causes about 1 $^{\circ}$ C error.

Multichannel Remote/Local Temperature Sensor

MAX1668/MAX1805

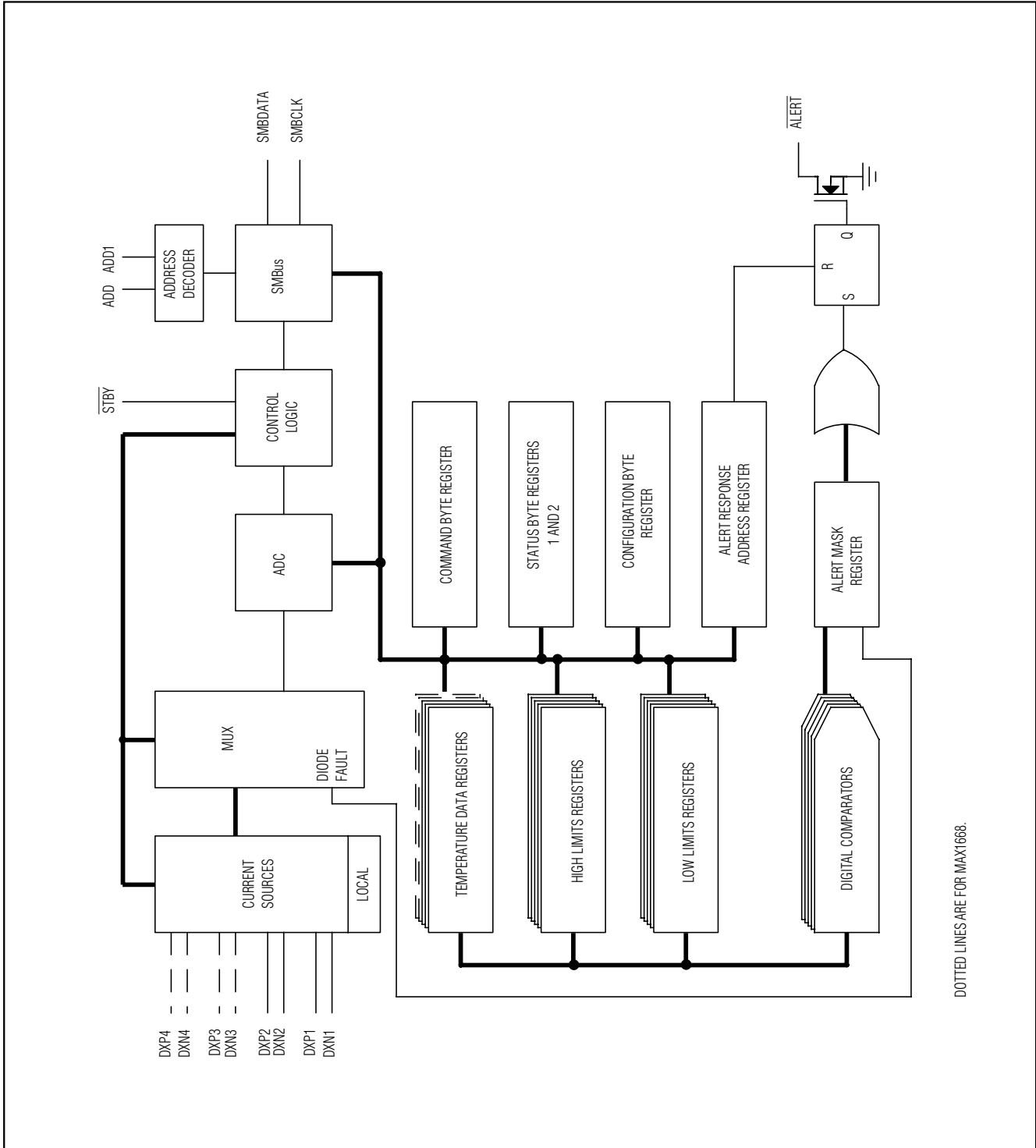


Figure 1. MAX1668/MAX1805 Functional Diagram

Multichannel Remote/Local Temperature Sensor

A/D Conversion Sequence

If a Start command is written (or generated automatically in the free-running autoconvert mode), all channels are converted, and the results of all measurements are available after the end of conversion. A BUSY status bit in the status byte shows that the device is actually performing a new conversion; however, even if the ADC is busy, the results of the previous conversion are always available.

Remote-Diode Selection

Temperature accuracy depends on having a good-quality, diode-connected small-signal transistor. Accuracy has been experimentally verified for all of the devices listed in Table 1. The MAX1668/MAX1805 can also directly measure the die temperature of CPUs and other ICs having on-board temperature-sensing diodes.

The transistor must be a small-signal type, either NPN or PNP, with a relatively high forward voltage; otherwise, the A/D input voltage range can be violated. The forward voltage must be greater than 0.25V at 10 μ A; check to ensure this is true at the highest expected temperature. The forward voltage must be less than 0.95V at 100 μ A; check to ensure this is true at the lowest expected temperature. Large power transistors don't work at all. Also, ensure that the base resistance is less than 100 Ω . Tight specifications for forward-current gain (+50 to +150, for example) indicate that the manufacturer has good process controls and that the devices have consistent VBE characteristics.

For heat-sink mounting, the 500-32BT02-000 thermal sensor from Fenwal Electronics is a good choice. This device consists of a diode-connected transistor, an aluminum plate with screw hole, and twisted-pair cable (Fenwal Inc., Milford, MA, 508-478-6000).

Thermal Mass and Self-Heating

Thermal mass can seriously degrade the MAX1668/MAX1805's effective accuracy. The thermal time constant of the QSOP-16 package is about 140s in still air. For the MAX1668/MAX1805 junction temperature to settle to within +1 $^{\circ}$ C after a sudden +100 $^{\circ}$ C change requires about five time constants or 12 minutes. The use of smaller packages for remote sensors, such as SOT23s, improves the situation. Take care to account for thermal gradients between the heat source and the sensor, and ensure that stray air currents across the sensor package do not interfere with measurement accuracy.

Self-heating does not significantly affect measurement accuracy. Remote-sensor self-heating due to the diode current source is negligible. For the local diode, the

Table 1. Remote-Sensor Transistor Manufacturers

| MANUFACTURER | MODEL NUMBER |
|------------------------------|---------------|
| Central Semiconductor (USA) | CMPT3904 |
| Motorola (USA) | MMBT3904 |
| National Semiconductor (USA) | MMBT3904 |
| Rohm Semiconductor (Japan) | SST3904 |
| Samsung (Korea) | KST3904-TF |
| Siemens (Germany) | SMBT3904 |
| Zetex (England) | FMMT3904CT-ND |

Note: Transistors must be diode connected (base shorted to collector).

worst-case error occurs when sinking maximum current at the $\overline{\text{ALERT}}$ output. For example, with $\overline{\text{ALERT}}$ sinking 1mA, the typical power dissipation is $V_{CC} \times 400\mu\text{A}$ plus $0.4\text{V} \times 1\text{mA}$. Package theta J-A is about 150 $^{\circ}$ C/W, so with $V_{CC} = 5\text{V}$ and no copper PC board heat sinking, the resulting temperature rise is:

$$dT = 2.4\text{mW} \times 150^{\circ}\text{C/W} = 0.36^{\circ}\text{C}$$

Even with these contrived circumstances, it is difficult to introduce significant self-heating errors.

ADC Noise Filtering

The ADC is an integrating type with inherently good noise rejection, especially of low-frequency signals such as 60Hz/120Hz power-supply hum. Micropower operation places constraints on high-frequency noise rejection; therefore, careful PC board layout and proper external noise filtering are required for high-accuracy remote measurements in electrically noisy environments.

High-frequency EMI is best filtered at DXP_ and DXN_ with an external 2200pF capacitor. This value can be increased to about 3300pF (max), including cable capacitance. Higher capacitance than 3300pF introduces errors due to the rise time of the switched current source.

Nearly all noise sources tested cause additional error measurements, typically by +1 $^{\circ}$ C to +10 $^{\circ}$ C, depending on the frequency and amplitude (see *Typical Operating Characteristics*).

PC Board Layout

- 1) Place the MAX1668/MAX1805 as close as practical to the remote diode. In a noisy environment, such

Multichannel Remote/Local Temperature Sensor

as a computer motherboard, this distance can be 4 inches to 8 inches (typical) or more as long as the worst noise sources (such as CRTs, clock generators, memory buses, and ISA/PCI buses) are avoided.

- 2) Do not route the DXP_ to DXN_ lines next to the deflection coils of a CRT. Also, do not route the traces across a fast memory bus, which can easily introduce +30°C error, even with good filtering. Otherwise, most noise sources are fairly benign.
- 3) Route the DXP_ and DXN_ traces in parallel and in close proximity to each other, away from any high-voltage traces such as +12VDC. Leakage currents from PC board contamination must be dealt with carefully, since a 20MΩ leakage path from DXP_ to ground causes about +1°C error.
- 4) Connect guard traces to GND on either side of the DXP_ to DXN_ traces (Figure 2). With guard traces in place, routing near high-voltage traces is no longer an issue.
- 5) Route through as few vias and crossunders as possible to minimize copper/solder thermocouple effects.
- 6) When introducing a thermocouple, make sure that both the DXP_ and the DXN_ paths have matching thermocouples. In general, PC board-induced thermocouples are not a serious problem. A copper-solder thermocouple exhibits 3μV/°C, and it takes about 200μV of voltage error at DXP_ to DXN_ to cause a +1°C measurement error. So, most parasitic thermocouple errors are swamped out.
- 7) Use wide traces. Narrow ones are more inductive and tend to pick up radiated noise. The 10mil widths and spacings recommended in Figure 2 aren't absolutely necessary (as they offer only a minor improvement in leakage and noise), but try to use them where practical.
- 8) Copper can't be used as an EMI shield, and only ferrous materials such as steel work well. Placing a copper ground plane between the DXP_ to DXN_ traces and traces carrying high-frequency noise signals does not help reduce EMI.

PC Board Layout Checklist

- Place the MAX1668/MAX1805 as close as possible to the remote diodes.
- Keep traces away from high voltages (+12V bus).
- Keep traces away from fast data buses and CRTs.
- Use recommended trace widths and spacings.
- Place a ground plane under the traces.

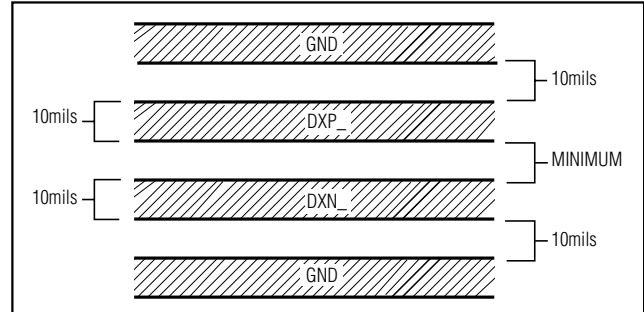


Figure 2. Recommended DXP_/DXN_ PC Traces

- Use guard traces flanking DXP_ and DXN_ and connecting to GND.
- Place the noise filter and the 0.1μF VCC bypass capacitors close to the MAX1668/MAX1805.
- Add a 200Ω resistor in series with VCC for best noise filtering (see *Typical Operating Circuit*).

Twisted-Pair and Shielded Cables

For remote-sensor distances longer than 8 inches, or in particularly noisy environments, a twisted pair is recommended. Its practical length is 6 feet to 12 feet (typical) before noise becomes a problem, as tested in a noisy electronics laboratory. For longer distances, the best solution is a shielded twisted pair like that used for audio microphones. For example, Belden #8451 works well for distances up to 100 feet in a noisy environment. Connect the twisted pair to DXP_ and DXN_ and the shield to GND, and leave the shield's remote end unterminated.

Excess capacitance at DX_ _ limits practical remote sensor distances (see *Typical Operating Characteristics*). For very long cable runs, the cable's parasitic capacitance often provides noise filtering, so the 2200pF capacitor can often be removed or reduced in value.

Cable resistance also affects remote-sensor accuracy; 1Ω series resistance introduces about +1/2°C error.

Low-Power Standby Mode

Standby mode disables the ADC and reduces the supply-current drain to less than 12μA. Enter standby mode by forcing the $\overline{\text{STBY}}$ pin low or via the RUN/STOP bit in the configuration byte register. Hardware and software standby modes behave almost identically: All data is retained in memory, and the SMB interface is alive and listening for reads and writes.

Activate hardware standby mode by forcing the $\overline{\text{STBY}}$ pin low. In a notebook computer, this line may be connected to the system SUSTAT# suspend-state signal.

The $\overline{\text{STBY}}$ pin low state overrides any software conversion command. If a hardware or software standby command

MAX1668/MAX1805

Multichannel Remote/Local Temperature Sensor

is received while a conversion is in progress, the conversion cycle is truncated, and the data from that conversion is not latched into either temperature reading register. The previous data is not changed and remains available.

In standby mode, supply current drops to about 3µA. At very low supply voltages (under the power-on-reset threshold), the supply current is higher due to the address pin bias currents. It can be as high as 100µA, depending on ADD0 and ADD1 settings.

SMBus Digital Interface

From a software perspective, the MAX1668/MAX1805 appear as a set of byte-wide registers that contain temperature data, alarm threshold values, or control bits. A standard SMBus 2-wire serial interface is used to read temperature data and write control bits and alarm threshold data. Each A/D channel within the devices responds to the same SMBus slave address for normal reads and writes.

The MAX1668/MAX1805 employ four standard SMBus protocols: Write Byte, Read Byte, Send Byte, and Receive Byte (Figure 3). The shorter Receive Byte protocol allows quicker transfers, provided that the correct data register

was previously selected by a Read Byte instruction. Use caution with the shorter protocols in multimaster systems, since a second master could overwrite the command byte without informing the first master.

The temperature data format is 7 bits plus sign in two's-complement form for each channel, with each data bit representing 1°C (Table 2), transmitted MSB first. Measurements are offset by +1/2°C to minimize internal rounding errors; for example, +99.6°C is reported as +100°C.

Alarm Threshold Registers

Ten (six for MAX1805) registers store alarm threshold data, with high-temperature (T_{HIGH}) and low-temperature (T_{LOW}) registers for each A/D channel. If either measured temperature equals or exceeds the corresponding alarm threshold value, an ALERT interrupt is asserted.

The power-on-reset (POR) state of all T_{HIGH} registers is full scale (0111 1111, or +127°C). The POR state of all T_{LOW} registers is 1100 1001 or -55°C.

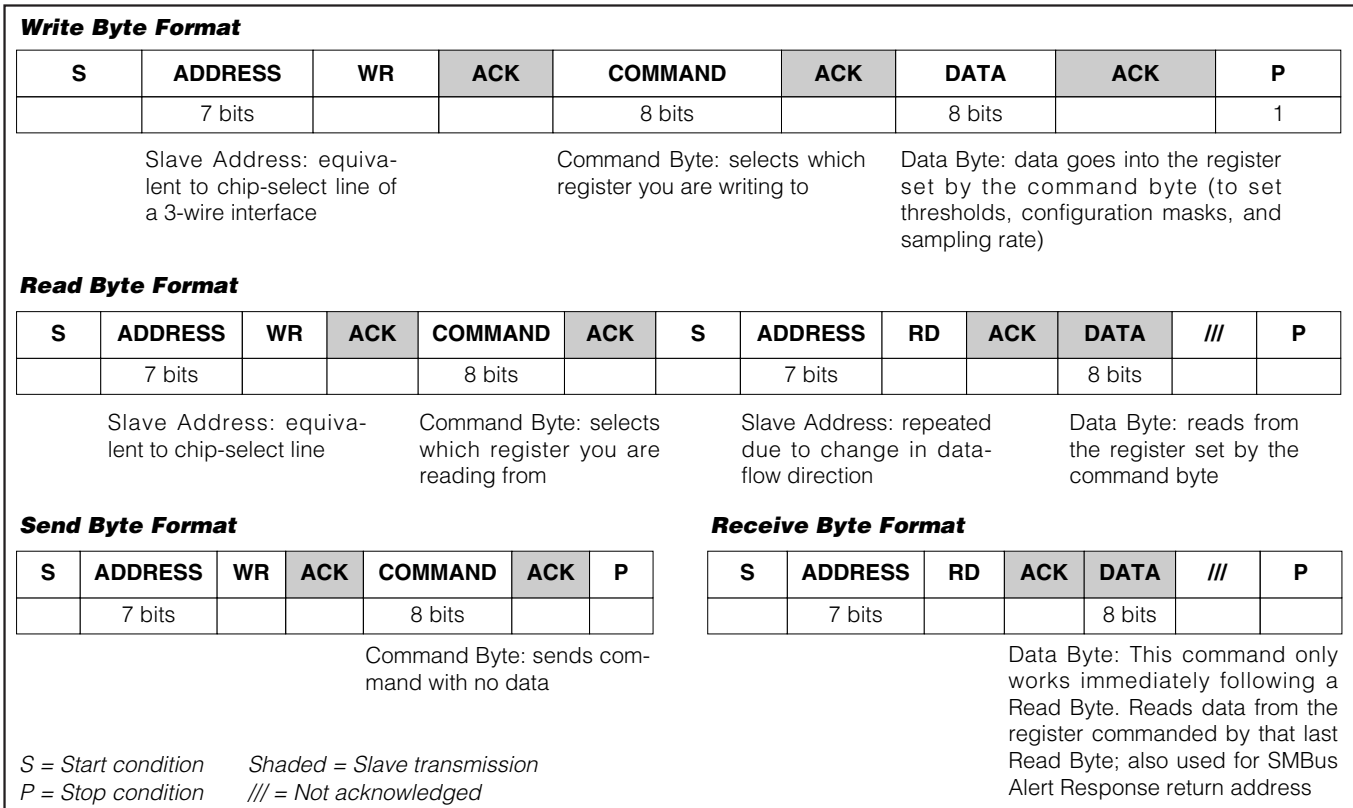


Figure 3. SMBus Protocols

Multichannel Remote/Local Temperature Sensor

MAX1668/MAX1805

Table 2. Data Format (Two's Complement)

| TEMP. (°C) | ROUNDED TEMP. (°C) | DIGITAL OUTPUT DATA BITS | | |
|---------------|--------------------------|-----------------------------|-----|------|
| | | SIGN | MSB | LSB |
| +130.00 | +127 | 0 | 111 | 1111 |
| +127.00 | +127 | 0 | 111 | 1111 |
| +126.50 | +127 | 0 | 111 | 1111 |
| +126.00 | +126 | 0 | 111 | 1110 |
| +25.25 | +25 | 0 | 001 | 1001 |
| +0.50 | +1 | 0 | 000 | 0001 |
| +0.25 | +0 | 0 | 000 | 0000 |
| +0.00 | +0 | 0 | 000 | 0000 |
| -0.25 | +0 | 0 | 000 | 0000 |
| -0.50 | +0 | 0 | 000 | 0000 |
| -0.75 | -1 | 1 | 111 | 1111 |
| -1.00 | -1 | 1 | 111 | 1111 |
| -25.00 | -25 | 1 | 110 | 0111 |
| -25.50 | -25 | 1 | 110 | 0110 |
| -54.75 | -55 | 1 | 100 | 1001 |
| -55.00 | -55 | 1 | 100 | 1001 |
| -65.00 | -65 | 1 | 011 | 1111 |
| -70.00 | -65 | 1 | 011 | 1111 |

Diode Fault Alarm

There is a continuity fault detector at DXP_ that detects whether the remote diode has an open-circuit condition. At the beginning of each conversion, the diode fault is checked, and the status byte is updated. This fault detector is a simple voltage detector; if DXP_ rises above $V_{CC} - 1V$ (typical) due to the diode current source, a fault is detected. Note that the diode fault isn't checked until a conversion is initiated, so immediately after power-on reset, the status byte indicates no fault is present, even if the diode path is broken.

If any remote channel is shorted (DXP_ to DXN_ or DXP_ to GND), the ADC reads 0000 0000 so as not to trip either the THIGH or TLOW alarms at their POR settings. In applications that are never subjected to 0°C in normal operation, a 0000 0000 result can be checked to indicate a fault condition in which DXP_ is accidentally short circuited. Similarly, if DXP_ is short circuited to VCC, the ADC reads +127°C for all remote and local channels, and the device alarms.

ALERT Interrupts

The $\overline{\text{ALERT}}$ interrupt output signal is latched and can only be cleared by reading the Alert Response address.

Table 3. Read Format for Alert Response Address (0001100)

| BIT | NAME | FUNCTION |
|------------|------|---|
| 7 (MSB) | ADD7 | Provide the current MAX1668/MAX1805 slave address that was latched at POR (Table 8) |
| 6 | ADD6 | |
| 5 | ADD5 | |
| 4 | ADD4 | |
| 3 | ADD3 | |
| 2 | ADD2 | |
| 1 | ADD1 | |
| 0 (LSB) | 1 | Logic 1 |

Interrupts are generated in response to THIGH and TLOW comparisons and when a remote diode is disconnected (for continuity fault detection). The interrupt does not halt automatic conversions; new temperature data continues to be available over the SMBus interface after ALERT is asserted. The interrupt output pin is open drain so that devices can share a common interrupt line. The interrupt rate can never exceed the conversion rate.

The interface responds to the SMBus Alert Response address, an interrupt pointer return-address feature (see *Alert Response Address* section). Prior to taking corrective action, always check to ensure that an interrupt is valid by reading the current temperature.

Alert Response Address

The SMBus Alert Response interrupt pointer provides quick fault identification for simple slave devices that lack the complex, expensive logic needed to be a bus master. Upon receiving an $\overline{\text{ALERT}}$ interrupt signal, the host master can broadcast a Receive Byte transmission to the Alert Response slave address (0001 100). Then any slave device that generated an interrupt attempts to identify itself by putting its own address on the bus (Table 3).

The Alert Response can activate several different slave devices simultaneously, similar to the I²C General Call. If more than one slave attempts to respond, bus arbitration rules apply, and the device with the lower address code wins. The losing device does not generate an acknowledge and continues to hold the $\overline{\text{ALERT}}$ line low until serviced (implies that the host interrupt input is level sensitive). Successful reading of the alert response address clears the interrupt latch.

Multichannel Remote/Local Temperature Sensor

Command Byte Functions

The 8-bit command byte register (Table 4) is the master index that points to the various other registers within the MAX1668/MAX1805. The register's POR state is 0000 0000, so that a Receive Byte transmission (a protocol that lacks the command byte) that occurs immediately after POR returns the current local temperature data.

Manufacturer and Device ID Codes

Two ROM registers provide manufacturer and device ID codes. Reading the Manufacturer ID returns 4Dh, which is the ASCII code M (for Maxim). Reading the device ID will return 03h for MAX1668, and 05h for MAX1805. If Read Word 16-bit SMBus protocol is

Table 4. Command Byte Bit Assignments for MAX1668/MAX1805

| REGISTER | COMMAND | POR STATE | FUNCTION |
|----------|---------|-----------------------|--|
| RIT | 00h | 0000 0000* | Read local temperature |
| RET1 | 01h | 0000 0000* | Read remote DX1 temp. |
| RET2 | 02h | 0000 0000* | Read remote DX2 temp. |
| RET3** | 03h | 0000 0000* | Read remote DX3 temp. |
| RET4** | 04h | 0000 0000* | Read remote DX4 temp. |
| RS1 | 05h | 0000 0000 | Read status byte #1 |
| RS2 | 06h | 0000 0000 | Read status byte #2 |
| RC | 07h | 0000 0000 | Read Configuration Byte |
| RIHL | 08h | 0111 1111 | Read local T _{HIGH} limit |
| RILL | 09h | 1100 1001 | Read local T _{LOW} limit |
| REHL1 | 0Ah | 0111 1111 | Read remote DX1 T _{HIGH} limit |
| RELL1 | 0Bh | 1100 1001 | Read remote DX1 T _{LOW} limit |
| REHL2 | 0Ch | 0111 1111 | Read remote DX2 T _{HIGH} limit |
| RELL2 | 0Dh | 1100 1001 | Read remote DX2 T _{LOW} limit |
| REHL3** | 0Eh | 0111 1111 | Read remote DX3 T _{HIGH} limit |
| RELL3** | 0Fh | 1100 1001 | Read remote DX3 T _{LOW} limit |
| REHL4** | 10h | 0111 1111 | Read remote DX4 T _{HIGH} limit |
| RELL4** | 11h | 1100 1001 | Read remote DX4 T _{LOW} limit |
| WC | 12h | N/A | Write configuration byte |
| WIHL | 13h | N/A | Write local T _{HIGH} limit |
| WILL | 14h | N/A | Write local T _{LOW} limit |
| WEHI1 | 15h | N/A | Write remote DX1 T _{HIGH} limit |
| WELL1 | 16h | N/A | Write remote DX1 T _{LOW} limit |
| WEHI2 | 17h | N/A | Write remote DX2 T _{HIGH} limit |
| WELL2 | 18h | N/A | Write remote DX2 T _{LOW} limit |
| WEHI3** | 19h | N/A | Write remote DX3 T _{HIGH} limit |
| WELL3** | 1Ah | N/A | Write remote DX3 T _{LOW} limit |
| WEHI4** | 1Bh | N/A | Write remote DX4 T _{HIGH} limit |
| WELL4** | 1Ch | N/A | Write remote DX4 T _{LOW} limit |
| MFG ID | FEh | 0100 1101 | Read manufacture ID |
| DEV ID | FFh | 0000 0011 (0000 0101) | Read device ID (for MAX1805) |

*If the device is in hardware standby mode at POR, all temperature registers read 0°C.

**Not available for MAX1805.

Multichannel Remote/Local Temperature Sensor

MAX1668/MAX1805

employed (rather than the 8-bit Read Byte), the least significant byte contains the data and the most significant byte contains 00h in both cases.

Configuration Byte Functions

The configuration byte register (Table 5) is used to mask (disable) interrupts and to put the device in software standby mode.

Status Byte Functions

The two status byte registers (Tables 6 and 7) indicate which (if any) temperature thresholds have been exceeded. The first byte also indicates whether the ADC is converting and whether there is an open circuit in a remote diode DXP_ to DXN_ path. After POR, the normal state of all the flag bits is zero, assuming none of the alarm conditions are present. The status byte is cleared by any successful read of the status byte, unless the fault persists. Note that the $\overline{\text{ALERT}}$ interrupt latch is not automatically cleared when the status flag bit is cleared.

When reading the status byte, you must check for internal bus collisions caused by asynchronous ADC timing, or else disable the ADC prior to reading the status byte (via the RUN/STOP bit in the configuration byte).

To check for internal bus collisions, read the status byte. If the least significant 7 bits are ones, discard the data and read the status byte again. The status bits LHIGH, LLOW, RHIGH, and RLOW are refreshed on the SMBus clock edge immediately following the stop condition, so there is no danger of losing temperature-related status data as a result of an internal bus collision. The OPEN status bit (diode continuity fault) is only refreshed at the beginning of a conversion, so OPEN data is lost. The $\overline{\text{ALERT}}$ interrupt latch is independent of the status byte register, so no false alerts are generated by an internal bus collision.

If the THIGH and TLOW limits are close together, it's possible for both high-temp and low-temp status bits to be set, depending on the amount of time between status read operations (especially when converting at the fastest rate). In these circumstances, it's best not to rely on the status bits to indicate reversals in long-term temperature changes and instead use a current temperature reading to establish the trend direction.

Conversion Rate

The MAX1668/MAX1805 are continuously measuring temperature on each channel. The typical conversion rate is approximately three conversions/s (for both devices). The resulting data is stored in the temperature data registers.

Slave Addresses

The MAX1668/MAX1805 appear to the SMBus as one device having a common address for all ADC channels. The device address can be set to one of nine different values by pin-strapping ADD0 and ADD1 so that more than one MAX1668/MAX1805 can reside on the same bus without address conflicts (Table 8).

The address pin states are checked at POR only, and the address data stays latched to reduce quiescent supply current due to the bias current needed for high-Z state detection.

The MAX1668/MAX1805 also respond to the SMBus Alert Response slave address (see the *Alert Response Address* section).

POR and Undervoltage Lockout

The MAX1668/MAX1805 have a volatile memory. To prevent ambiguous power-supply conditions from corrupting the data in memory and causing erratic behavior, a POR voltage detector monitors V_{CC} and clears the memory if V_{CC} falls below 1.8V (typical, see *Electrical Characteristics* table). When power is first applied and V_{CC} rises above 1.85V (typical), the logic blocks begin operating, although reads and writes at V_{CC} levels below 3V are not recommended. A second V_{CC} comparator, the ADC UVLO comparator, prevents the ADC from converting until there is sufficient headroom ($V_{CC} = 2.8V$ typical).

Power-Up Defaults

- Interrupt latch is cleared.
- Address select pins are sampled.
- ADC begins converting.
- Command byte is set to 00h to facilitate quick remote Receive Byte queries.
- THIGH and TLOW registers are set to max and min limits, respectively.

Multichannel Remote/Local Temperature Sensor

MAX1668/MAX1805

Table 5. Configuration Byte Bit Assignments

| BIT | NAME | POR | FUNCTION |
|---------|----------|-----|---|
| 7 (MSB) | MASKALL | 0 | Masks all $\overline{\text{ALERT}}$ interrupts when high. |
| 6 | RUN/STOP | 0 | Standby mode control bit. If high, the device immediately stops converting and enters stand-by mode. If low, the device converts. |
| 5 | MASK4* | 0 | Masks remote DX4 interrupts when high. |
| 4 | MASK3* | 0 | Masks remote DX3 interrupts when high. |
| 3 | MASK2 | 0 | Masks remote DX2 interrupts when high. |
| 2 | MASK1 | 0 | Masks remote DX1 interrupts when high. |
| 0 | IBIAS1 | 0 | Medium/low-bias control bit. High = low bias, low = medium bias. IBIAS0 must be low. |
| 1 | IBIAS0 | 0 | High-bias control bit. High bias on DXP_ when high. Overrides IBIAS1. |

*Not available for MAX1805.

Table 6. Status Byte Bit 1 Assignments

| BIT | NAME | FUNCTION |
|---------|--------|--|
| 7 (MSB) | BUSY | A high indicates that the ADC is busy converting. |
| 6 | LHIGH† | A high indicates that the local high-temperature alarm has activated. |
| 5 | LLOW† | A high indicates that the local low-temperature alarm has activated. |
| 4 | OPEN† | A high indicates one of the remote-diode continuity (open-circuit) faults |
| 3 | ALARM† | A high indicates one of the remote-diode channels has over/undertemperature alarm. |
| 2 | N/A | N/A |
| 1 | N/A | N/A |
| 0 | N/A | N/A |

† These flags stay high until cleared by POR, or until the status byte register is read.

Table 7. Status Byte 2 Bit Assignments

| BIT | NAME | FUNCTION |
|---------|---------|---|
| 7 (MSB) | RLOW1 | A high indicates that the DX1 low-temperature alarm has activated. |
| 6 | RHIGH1 | A high indicates that the DX1 high-temperature alarm has activated. |
| 5 | RLOW2 | A high indicates that the DX2 low-temperature alarm has activated. |
| 4 | RHIGH2 | A high indicates that the DX2 high-temperature alarm has activated. |
| 3 | RLOW3* | A high indicates that the DX3 low-temperature alarm has activated. |
| 2 | RHIGH3* | A high indicates that the DX3 high-temperature alarm has activated. |
| 1 | RLOW4* | A high indicates that the DX4 low-temperature alarm has activated. |
| 0 | RHIGH4* | A high indicates that the DX4 high-temperature alarm has activated. |

Note: All flags in this byte stay high until cleared by POR or until the status byte is read.

*Not available for MAX1805.

Multichannel Remote/Local Temperature Sensor

MAX1668/MAX1805

Table 8. Slave Address Decoding (ADD0 and ADD1)

| ADD0 | ADD1 | ADDRESS |
|--------|--------|----------|
| GND | GND | 0011 000 |
| GND | High-Z | 0011 001 |
| GND | Vcc | 0011 010 |
| High-Z | GND | 0101 001 |
| High-Z | High-Z | 0101 010 |
| High-Z | Vcc | 0101 011 |
| Vcc | GND | 1001 100 |
| Vcc | High-Z | 1001 101 |
| Vcc | Vcc | 1001 110 |

Note: High-Z means that the pin is left unconnected and floating.

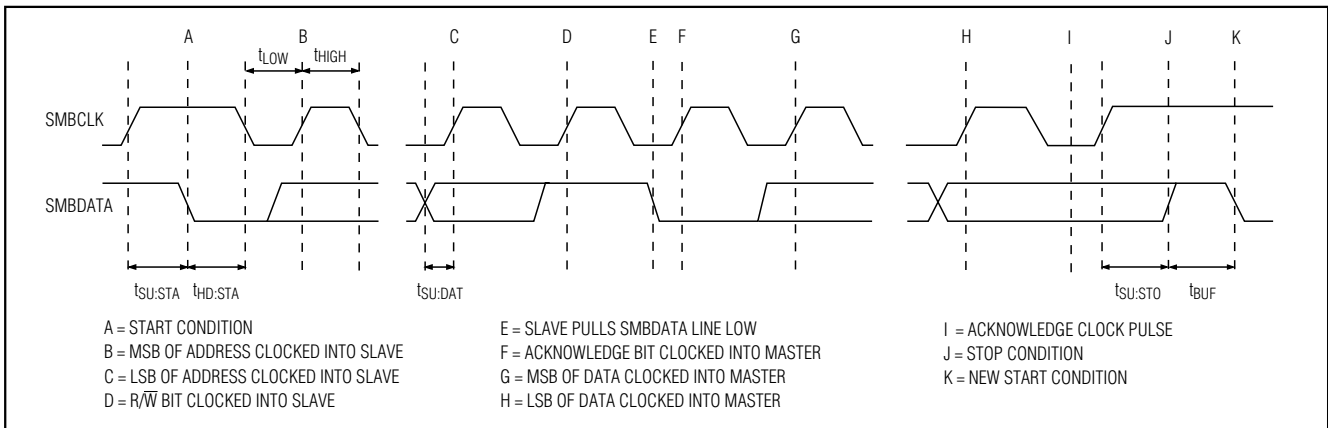


Figure 4. SMBus Read Timing Diagram

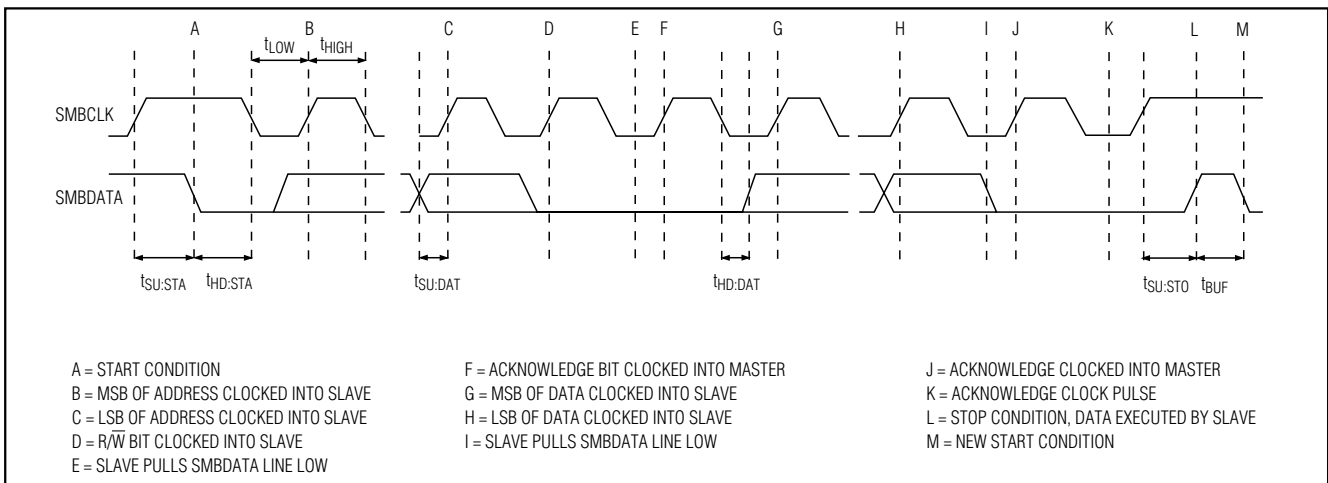
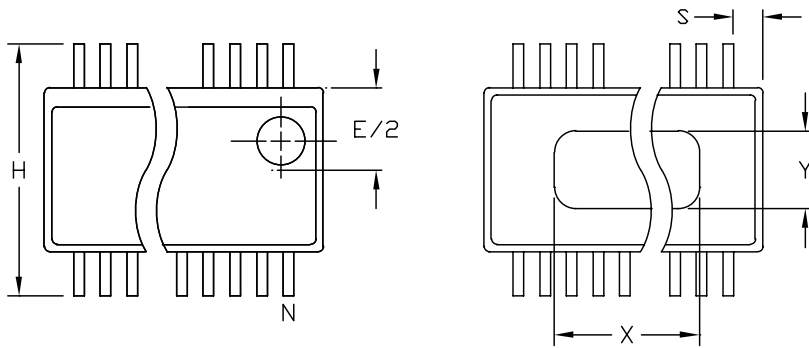


Figure 5. SMBus Write Timing Diagram

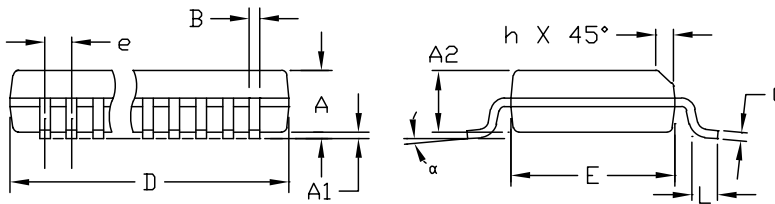
MAX1668/MAX1805

Multichannel Remote/Local Temperature Sensor

Package Information



| DIM | INCHES | | MILLIMETERS | |
|-----|----------------|-------|-------------|-------|
| | MIN | MAX | MIN | MAX |
| A | .061 | .068 | 1.55 | 1.73 |
| A1 | .004 | .0098 | 0.102 | 0.249 |
| A2 | .055 | .061 | 1.40 | 1.55 |
| B | .008 | .012 | 0.20 | 0.31 |
| C | .0075 | .0098 | 0.191 | 0.249 |
| D | SEE VARIATIONS | | | |
| E | .150 | .157 | 3.81 | 3.99 |
| e | .025 BSC | | 0.635 BSC | |
| H | .230 | .244 | 5.84 | 6.20 |
| h | .010 | .016 | 0.25 | 0.41 |
| L | .016 | .035 | 0.41 | 0.89 |
| N | SEE VARIATIONS | | | |
| X | SEE VARIATIONS | | | |
| Y | .071 | .087 | 1.803 | 2.209 |
| α | 0° | 8° | 0° | 8° |



VARIATIONS:

| DIM | INCHES | | MILLIMETERS | | N |
|-----|--------|-------|-------------|-------|---------|
| | MIN. | MAX. | MIN. | MAX. | |
| D | .189 | .196 | 4.80 | 4.98 | 16 AA |
| S | .0020 | .0070 | 0.05 | 0.18 | |
| X | .107 | .123 | 2.72 | 3.12 | |
| D | .337 | .344 | 8.56 | 8.74 | 20 AB |
| S | .0500 | .0550 | 1.270 | 1.397 | |
| D | .337 | .344 | 8.56 | 8.74 | 24 AC |
| S | .0250 | .0300 | 0.635 | 0.762 | |
| D | .386 | .393 | 9.80 | 9.98 | 28 AD |
| S | .0250 | .0300 | 0.635 | 0.762 | |
| X | .271 | .287 | 6.88 | 7.29 | |

NOTES:

1. D & E DO NOT INCLUDE MOLD FLASH OR PROTRUSIONS
2. MOLD FLASH OR PROTRUSIONS NOT TO EXCEED .006" PER SIDE.
3. HEAT SLUG DIMENSIONS X AND Y APPLY ONLY TO 16 AND 28 LEAD POWER-QSOP PACKAGES.
4. CONTROLLING DIMENSIONS: INCHES.

MAXIM

PROPRIETARY INFORMATION

TITLE:
PACKAGE OUTLINE, QSOP, .150", .025" LEAD PITCH

| | | |
|----------|----------------------|-------|
| APPROVAL | DOCUMENT CONTROL NO. | REV |
| | 21-0055 | B 1/1 |

QSOP, EPS

Maxim cannot assume responsibility for use of any circuitry other than circuitry entirely embodied in a Maxim product. No circuit patent licenses are implied. Maxim reserves the right to change the circuitry and specifications without notice at any time.

16 _____ **Maxim Integrated Products, 120 San Gabriel Drive, Sunnyvale, CA 94086 (408) 737-7600**

© 2000 Maxim Integrated Products

Printed USA

MAXIM is a registered trademark of Maxim Integrated Products.

SUNSTAR商斯达实业集团是集研发、生产、工程、销售、代理经销、技术咨询、信息服务等为一体的高科技企业，是专业高科技电子产品生产厂家，是具有10多年历史的专业电子元器件供应商，是中国最早和最大的仓储式连锁规模经营大型综合电子零部件代理分销商之一，是一家专业代理和分销世界各大品牌IC芯片和电子元器件的连锁经营综合性国际公司。在香港、北京、深圳、上海、西安、成都等全国主要电子市场设有直属分公司和产品展示展销窗口门市部专卖店及代理分销商，已在全国范围内建成强大统一的供货和代理分销网络。我们专业代理经销、开发生产电子元器件、集成电路、传感器、微波光电元器件、工控机/DOC/DOM电子盘、专用电路、单片机开发、MCU/DSP/ARM/FPGA软件硬件、二极管、三极管、模块等，是您可靠的一站式现货配套供应商、方案提供商、部件功能模块开发配套商。专业以现代信息产业（计算机、通讯及传感器）三大支柱之一的传感器为主营业务，专业经营各类传感器的代理、销售生产、网络信息、科技图书资料及配套产品设计、工程开发。我们的专业网站——中国传感器科技信息网（全球传感器数据库）www.SENSOR-IC.COM 服务于全球高科技生产商及贸易商，为企业科技产品开发提供技术交流平台。欢迎各厂商互通有无、交换信息、交换链接、发布寻求代理信息。欢迎国外高科技传感器、变送器、执行器、自动控制产品厂商介绍产品到中国，共同开拓市场。本网站是关于各种传感器-变送器-仪器仪表及工业自动化大型专业网站，深入到工业控制、系统工程计 测量、自动化、安防报警、消费电子等众多领域，把最新的传感器-变送器-仪器仪表买卖信息，最新技术供求，最新采购商，行业动态，发展方向，最新的技术应用和市场资讯及时的传递给广大科技开发、科学研究、产品设计人员。本网站已成功为石油、化工、电力、医药、生物、航空、航天、国防、能源、冶金、电子、工业、农业、交通、汽车、矿山、煤炭、纺织、信息、通信、IT、安防、环保、印刷、科研、气象、仪器仪表等领域从事科学研究、产品设计、开发、生产制造的科技人员、管理人员、和采购人员提供满意服务。我们公司专业生产、代理、经销、销售各种传感器、变送器、敏感元器件、开关、执行器、仪器仪表、自动化控制系统：专业从事设计、生产、销售各种传感器、变送器、各种测控仪表、热工仪表、现场控制器、计算机控制系统、数据采集系统、各类环境监控系统、专用控制系统应用软件以及嵌入式系统开发及应用等工作。如热敏电阻、压敏电阻、温度传感器、温度变送器、湿度传感器、湿度变送器、气体传感器、气体变送器、压力传感器、压力变送、称重传感器、物（液）位传感器、物（液）位变送器、流量传感器、流量变送器、电流（压）传感器、溶氧传感器、霍尔传感器、图像传感器、超声波传感器、位移传感器、速度传感器、加速度传感器、扭距传感器、红外传感器、紫外传感器、火焰传感器、激光传感器、振动传感器、轴角传感器、光电传感器、接近传感器、干簧管传感器、继电器传感器、微型电泵、磁敏（阻）传感器、压力开关、接近开关、光电开关、色标传感器、光纤传感器、齿轮测速传感器、时间继电器、计数器、计米器、温控仪、固态继电器、调压模块、电磁铁、电压表、电流表等特殊传感器。同时承接传感器应用电路、产品设计和自动化工程项目。

更多产品请看本公司产品专用销售网站：

商斯达中国传感器科技信息网：<http://www.sensor-ic.com/>

商斯达工控安防网：<http://www.pc-ps.net/>

商斯达电子元器件网：<http://www.sunstare.com/>

商斯达微波光电产品网：[HTTP://www.rfoe.net/](http://www.rfoe.net/)

商斯达消费电子产品网：<http://www.icasic.com/>

商斯达军工产品网：<http://www.junpinic.com/>

商斯达实业科技产品网：<http://www.sunstars.cn/> 传感器销售热线：

地址：深圳市福田区福华路福庆街鸿图大厦1602室

电话：0755-83607652 83376489 83376549 83370250 83370251 82500323

传真：0755-83376182 (0) 13902971329 MSN: SUNS888@hotmail.com

邮编：518033 E-mail: szss20@163.com QQ: 195847376

深圳赛格展销部：深圳华强北路赛格电子市场2583号 电话：0755-83665529 25059422

技术支持：0755-83394033 13501568376

欢迎索取免费详细资料、设计指南和光盘；产品凡多，未能尽录，欢迎来电查询。

北京分公司：北京海淀区知春路132号中发电子大厦3097号

TEL: 010-81159046 82615020 13501189838 FAX: 010-62543996

上海分公司：上海市北京东路668号上海赛格电子市场D125号

TEL: 021-28311762 56703037 13701955389 FAX: 021-56703037

西安分公司：西安高新开发区20所(中国电子科技集团导航技术研究所)

西安劳动南路88号电子商城二楼D23号

TEL: 029-81022619 13072977981 FAX: 029-88789382