

CoMo DataCenter

Type 2829B...

Information is one of the most important commodities in the production routine when it comes to achieving precision, freedom from defects, cost consciousness and quality management.

CoMo DataCenter stores the production data in a database application, which subjects it to statistical analysis and clearly describes the production status. It supplements and supports CoMo Injection in automating the flow of information during production.

- Database
- Statistics
- Reporting
- Curve analysis
- Data export
- Multiple access

Description

CoMo DataCenter contains a database in which the data recorded by CoMo Injection is stored. A convenient interface allows the user to view and analyze this data during production. The entire system uses the command variables of production order, production batch, article number and mold number. The data can be exported to other systems without great expense. The database comes with the free version of MS SQL Server, which is primarily suitable for gaining an introduction to zero-defect production. This is limited to a database size of 4 GB. If the database is to be used without any size restrictions, CoMo DataCenter can be installed and run with the full version of MS SQL Server.

Applications	Batch	Production Order	Status	Last Cycle	Efficiency	Cycles
	001	101-037	terminated	21.11.2008 13:49:23	97.26 %	28057
	002	101-037	terminated	13.07.2009 18:32:15	98.13 %	34547
	003	101-037	terminated	02.08.2009 11:23:02	87.64 %	725
	004	101-037	production	02.08.2009 09:58:59	93.26 %	6389
	001	101-038	terminated	31.04.2009 01:22:53	96.27 %	18150
	002	101-038	production	03.08.2009 10:14:59	98.55 %	11001
	001	101-039	production	03.08.2009 10:11:01	97.11 %	9153
	001	101-040	production	03.08.2009 10:15:43	99.12 %	59
	001	101-041	production	03.08.2009 10:15:36	95.86 %	21182
	001	101-042	production	03.08.2009 10:15:48	86.06 %	7991

Figure 1: CoMo DataCenter interface

Application

CoMo DataCenter offers the practical possibility of obtaining an overview in a hectic production environment. It enables an equally rapid insight into current production by the production manager, the supervisor taking over a new shift or the quality manager wanting to see the statistics on how production of a key product have been going. The system is designed to save the information produced by CoMo Injection, such as good/bad, maximum/minimum, integral, etc., and provide the user with a clear description, evaluation and conditioning for data export if required.

Technical Data

Volume of Data

CoMo Injection Type 2869B..., key parameters only, such as maximum, etc.	KB per cycle	3,3
key parameters including curve data	kB per cycle	20

Maximum Size of Database

Microsoft SQL Server Express Edition (supplied as standard)	GB	4
Microsoft SQL Server (has to be purchased and installed by the customer)		unlimited/hardware-dependent

2829B_000-548e-02_11

Extraction of Data

The increased necessity of demonstrating to colleagues or the customer process capability and production stability within the framework of the zero-defect strategy forces the user to store production data. As the volume of data for production with several machines can be very high, various compression strategies are adopted depending on the operation. In these circumstances the open CoMo DataCenter database forms an ideal buffer from which data can be retrieved, compressed and transferred to host systems as required.

Supported Operating Systems

- Windows XP® Professional SP3 (32 bit)
- Windows Vista® (32 bit)
- Windows 7® (32 bit, 64 bit)
- Windows Server® 2003 (32 bit)
- Windows Server® 2008 (32 bit, 64 bit)

Supported Database Server

- SQL Server 2005 SP3
- SQL Server 2005 Express SP3
- SQL Server 2008 SP2
- SQL Server 2008 Express SP1

System Requirements for the Server Hardware

CoMo Injection/DataCenter database system is a scalable complete system. This ranges from an individual CoMo Injection with data storage in the DataCenter, to >50 exporting CoMo Injection units.

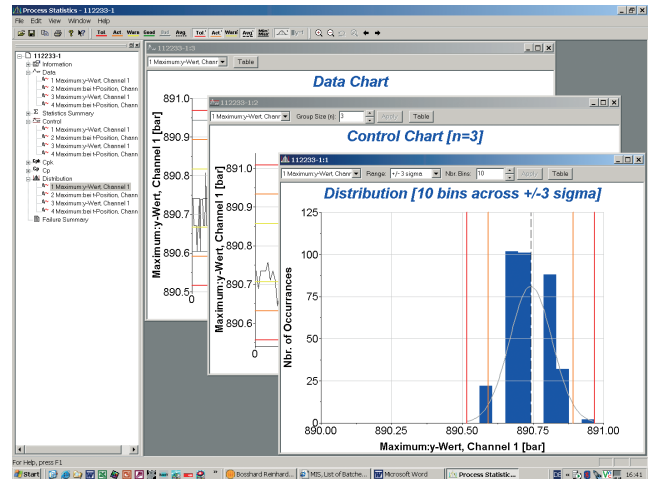


Figure 2: Process statistics

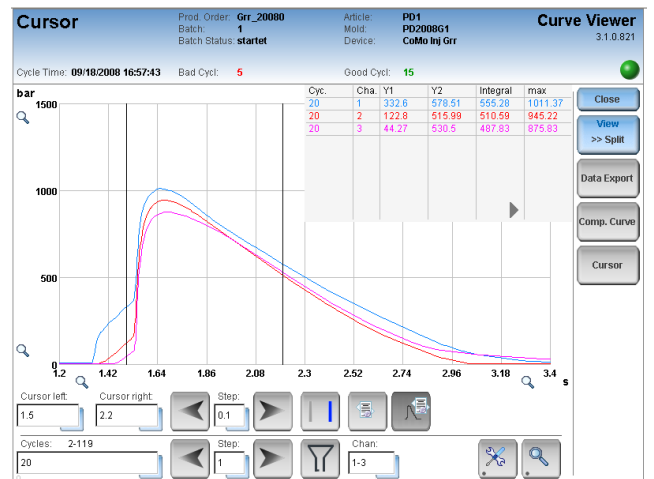


Fig. 3: Curve Viewer

CoMo Injection units	1 ... 10	< ... 30	30 ... 80
CPU	2 GHz	Dual core >2 GHz	Quad core >2,5 GH
RAM	2 GB	4 GB	4 GB
Hard disk	>5 GB, depending on number of cycles/curves	>250 GB, depending on number of cycles/curves	>500 GB, depending on number of cycles/curves
Database server	SQL Server Express Edition Standard Edition	SQL Server Standard Edition	SQL Server Standard Edition

2829B_000-548e-02.11

This information corresponds to the current state of knowledge. Kistler reserves the right to make technical changes. Liability for consequential damage resulting from the use of Kistler products is excluded.

©2011, Kistler Group, Eulachstrasse 22, 8408 Winterthur, Switzerland
Tel. +41 52 224 11 11, Fax +41 52 224 14 14, info@kistler.com, www.kistler.com
Kistler is a registered trademark of Kistler Holding AG.

Ordering Key

Type 2829B

CoMo DataCenter (1 license)	01
CoMo DataCenter (10 licenses)	10
CoMo DataCenter (20 licenses)	20
CoMo DataCenter (50 licenses)	50



Per license can be connected one CoMo Injection. The licenses can be used for a new installation as well as a license upgrade for existing installation functions.

2829B_000-548e-02.11

Windows®, Windows XP®, Windows Vista®, Windows 7® and Windows Server® are registered trademarks of the Microsoft Corporation.