

Configuration Software

Type 2885A

for RoaDyn® Measuring Wheels and Hubs System 2000

The RoaDyn Configuration Software Type 2885A is a universal tool for the RoaDyn System 2000. It allows settings to be made which previously had to be entered using the remote control Type 5685A2.

- Reading out, editing and writing back parameters and channel configurations (in a vehicle)
- Convenient data management of the configuration data
- Reading out and storage of the existing system configuration for documentation
- DSP firmware update for MDSP and SDSP (vehicle and test rig)

Description

The configurations software for the RoaDyn System 2000 has an easily understandable and intuitive user interface with various functions. Various settings can be made clearly and quickly, which previously had to be made using the remote control. The user-friendly generated entry windows prevent input errors, and configuration files can be saved after entry and automatically provided with comments and date.

Use of the configuration tool for setting the system parameters even by inexperienced customers is not critical, because all changes can be re-entered by means of the program or the remote control.

Important note:

The DSP software update requires experience with the various versions and characteristics of the RoaDyn System 2000. Programming of the DSP cards with faulty or wrong program versions may result in the RoaDyn System 2000 no longer being able to communicate with the user. The DSP interface card (MDSP/IDSP) must then be sent in to Kistler for complete reprogramming.

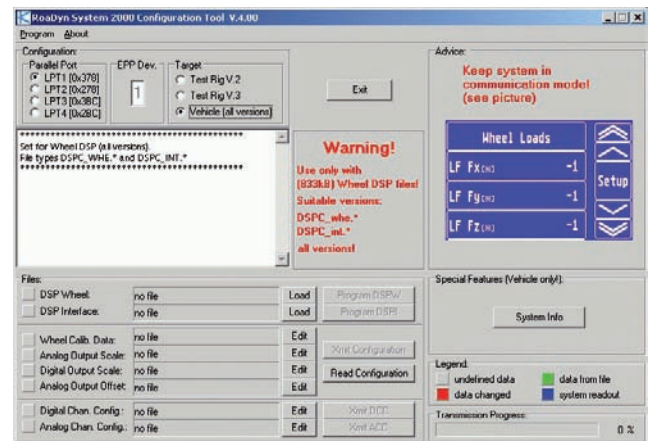


Bild 1: Entry-level window RoaDyn® Remote Control Emulation Software

Application

The configuration software is used together with RoaDyn measuring wheel systems P6xy, Sxy, V6xy in System 2000.

Technical Data

Computer recommendation

Software requirement	Windows®	98, NT, 2000, XP
Storage space		1 MB
RAM memory		min. 256 MB
Interface	Parallel port	EPP

Windows® is a registered trademark of Microsoft Corporation.

2885A_000-590e-06.07

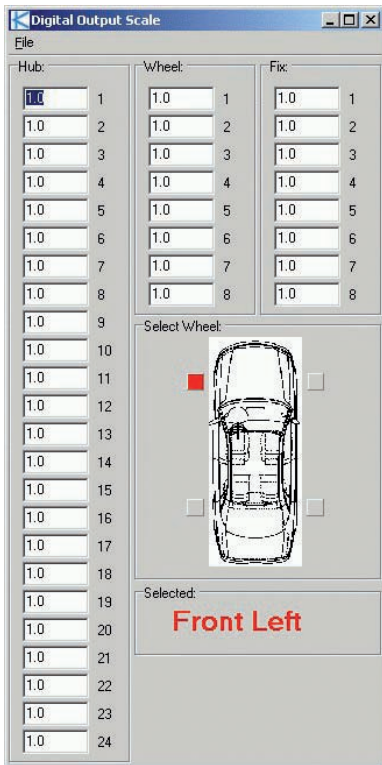


Bild 2: Window of scaling of digital output, measuring wheel, vehicle front nearside

Included Accessories

- Standard EPP connecting cable, 1,8 m

Type/Art. No.

1700A90 1,8

Optional Accessories

- None

Ordering Code

- RoaDyn® Configuration Tool
Software System 2000

Type 2885A

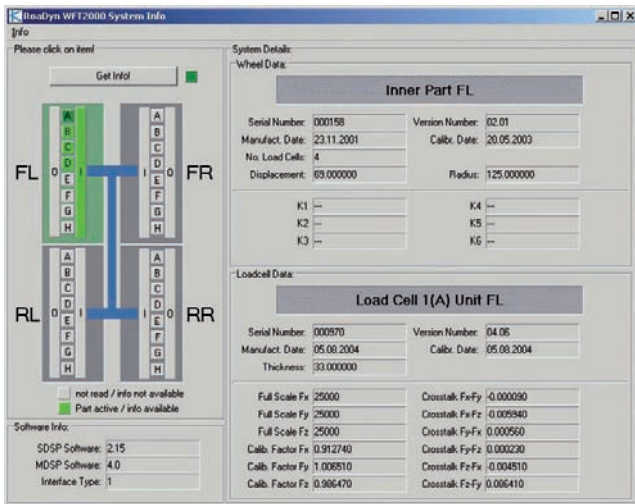


Bild 3: System information window

2885A_000-590e-06.07