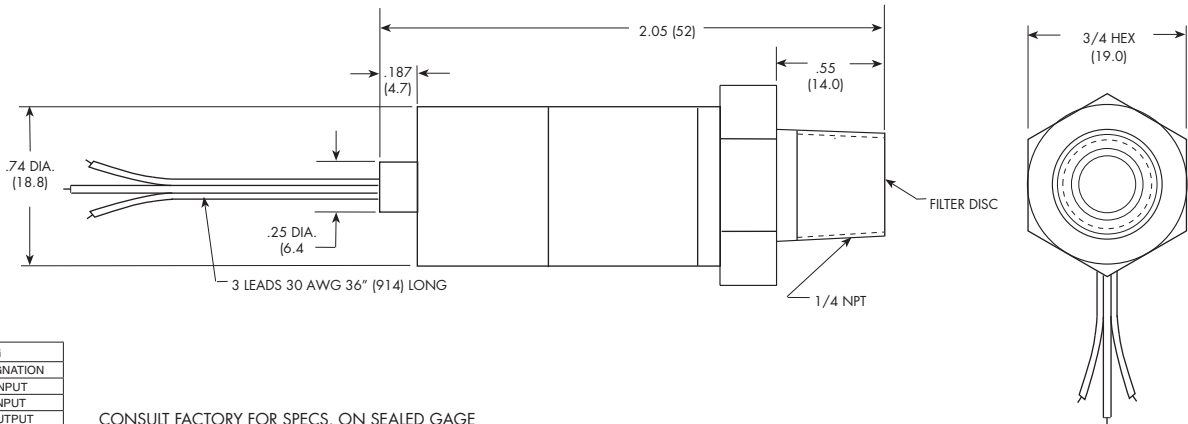
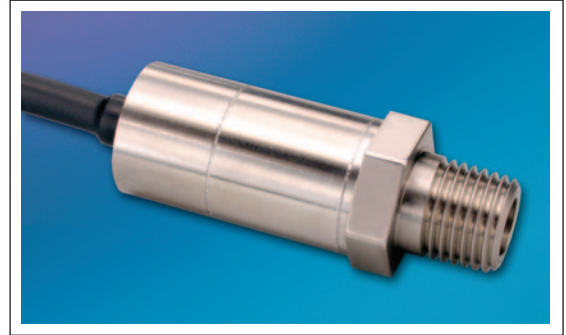




5 VDC OUTPUT IS® PRESSURE TRANSDUCER

ETQ-500 SERIES

- 5 VDC Output
- Hybrid Microelectronic Regulator-Amplifier
- All Welded Construction
- Excellent Stability and Reliability
- Secondary Containment On Absolute And Sealed Gage Units



WIRING	
COLOR	DESIGNATION
RED	+ INPUT
BLACK	- INPUT
GREEN	+ OUTPUT

CONSULT FACTORY FOR SPECS. ON SEALED GAGE

INPUT	3.5	7	17	35	70	170	350 BAR
Pressure Range	50	100	250	500	1000	2500	5000 PSI
Operational Mode	Absolute, Sealed Gage						
Over Pressure	2 Times Rated Pressure to 1000 PSI (70 BAR) 1.5 Times Rated Pressure Above 1000 PSI to a Max. of 30000 PSI (2100 BAR)						
Burst Pressure	3 Times Rated Pressure						
Pressure Media	All Nonconductive, Noncorrosive Liquids or Gases						
Maximum Electrical Current	25 mA						
Rated Electrical Excitation	8 - 16 VDC			13 - 32 VDC			
OUTPUT	5 VDC ± 150 mV			5 VDC ± 150 mV or 10 VDC ± 300 mV			
Full Scale Reading	5 VDC ± 150 mV			5 VDC ± 150 mV or 10 VDC ± 300 mV			
Output Impedance	200 Ohms (Nom.)						
Bandwidth (-3dB)	DC to 3000 Hz						
Residual Unbalance	0.5V ± 75mV						
Combined Non-Linearity, Hysteresis and Repeatability	± 0.1% BFSL (Typ.), ± 0.5% BFSL (Max.)						
Resolution	Infinitesimal						
Natural Frequency (KHz) (Typ.)	Greater Than 400 KHz						
Acceleration Sensitivity % FS/g							
Perpendicular	1.0x10 ⁻³	5.2x10 ⁻⁴	2.2x10 ⁻⁴	1.1x10 ⁻⁴	6.2x10 ⁻⁵	2.6x10 ⁻⁵	1.5x10 ⁻⁵
Transverse	3.1x10 ⁻⁵	2.0x10 ⁻⁵	1.0x10 ⁻⁵	7.0x10 ⁻⁶	4.3x10 ⁻⁶	2.3x10 ⁻⁶	1.5x10 ⁻⁶
Insulation Resistance	100 Megohm Min. @ 50 VDC						
ENVIRONMENTAL							
Operating Temperature Range	-65°F to +250°F (-55°C to +120°C)						
Compensated Temperature Range	0°F to +212°F (-18°C to +100°C) Other Ranges Quoted on Request						
Thermal Zero Shift	± 3% FS/100°F (Typ.)						
Thermal Sensitivity Shift	± 3% /100°F (Typ.)						
Linear Vibration	100g Peak, Sine up to 5000 Hz						
Altitude	-150 ft. to +70,000 ft. Will Not Damage Sensor						
Mechanical Shock	100g half Sine Wave 11 msec Duration						
PHYSICAL							
Electrical Connection	3 30 AWG Leads 30" (762) Long						
Weight	24.5 Grams (Max.) Excluding Cable						
Pressure Sensing Principle	Fully Active Four Arm Wheatstone Bridge Dielectrically Isolated Silicon on Silicon						
Mounting Torque	80 Inch-Pounds (Max.)						

Note: Custom pressure ranges, accuracies and mechanical configurations available. Dimensions are in inches. Dimensions in parenthesis are in millimeters.

Continuous development and refinement of our products may result in specification changes without notice. All dimensions are final unless otherwise noted.