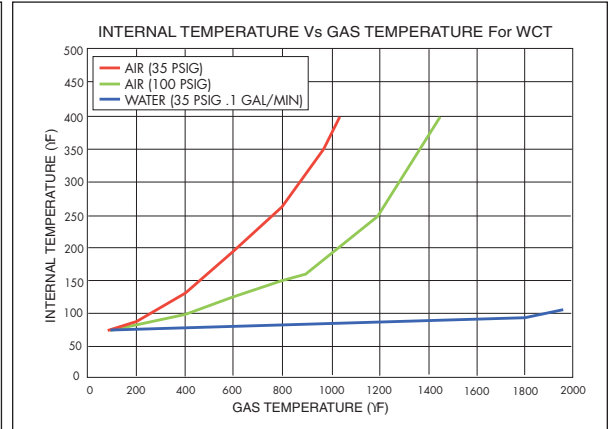
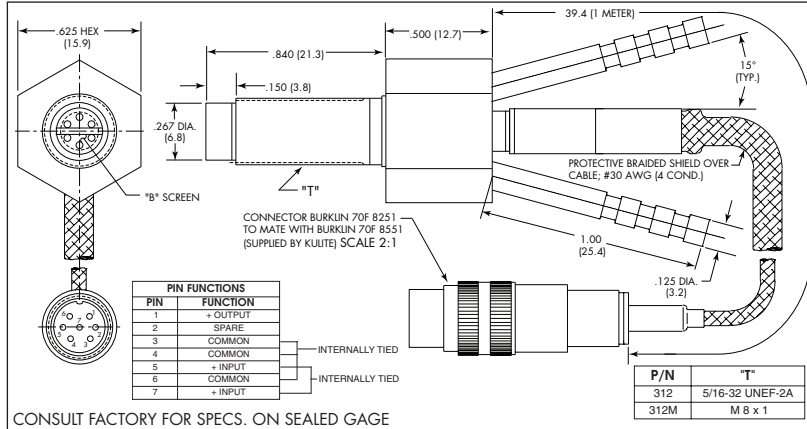
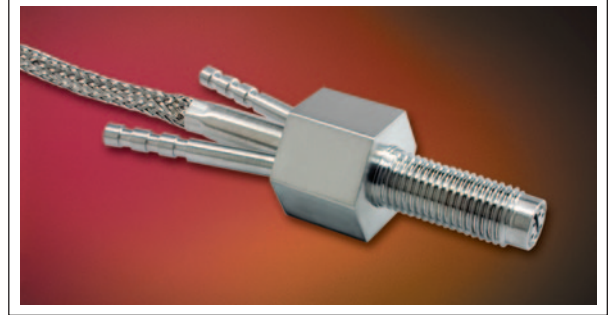


## WATER/AIR COOLED 5VDC OUTPUT IS® TRANSDUCER

### EWCT-312 (M)

- High Bandwidth With Integrated Amplifier
- Patented Leadless Technology
- Superior Thermal Protection
- Both Dynamic and Static Output Capabilities Available
- Extreme Temperature Capabilities Such As Required In Exhaust Systems

Kulite introduces a new small and compact Water Cooled Pressure Transducer for both dynamic and static pressure measurements in extreme temperature environments such as automotive and turbine exhaust systems. The EWCT-312 combines Kulite's patented Low Cost Leadless Silicon Technology and a Miniature Water Cooled Jacket to provide pressure measurement capabilities previously unavailable.



<b>INPUT</b>			
Pressure Range	25 PSI / 1.7 BAR To 1000 PSI / 70 BAR		
Operational Mode	Absolute, Sealed Gage		
Over Pressure	2 Times Rated Pressure		
Burst Pressure	3 Times Rated Pressure		
Pressure Media	Compatible With Exhaust Gases and Fluids and Any Media Compatible With SiO <sub>2</sub> And 15-5 PH Stainless Steel		
Maximum Electrical Current	25mA		
Rated Electrical Excitation	12 ± 4 VDC	28 ± 4 VDC	28 ± 4 VDC
<b>OUTPUT</b>			
Full Scale Reading	5 V ± 150mV	5 V ± 150mV	10 V ± 300mV
Output Impedance	200 Ohms (Nom.)		
Bandwidth (-3dB)	Greater Than 30 KHz		
Residual Unbalance	500mV ±100mV		
Combined Non-Linearity, Hysteresis and Repeatability	± 0.1% FSO BFSL (Typ.) ± 0.5% FSO (Max.)		
Resolution	Infinitesimal		
Natural Frequency (KHz) (Typ.)	600 KHz		
Insulation Resistance	100 Megohm Min. @ 50 VDC		
<b>ENVIRONMENTAL</b>			
Operating Temperature Range	75°F to +2000°F (24°C to +1093°C) (Front End) -4°F to +185°F (-20°C to +85°C) (Connector and Amplifier)		
Water Flow Rate	.15 Gal/Min (Typ.)		
Steady Acceleration	10,000g. (Max.)		
Linear Vibration	10-2,000 Hz Sine, 100g (Max.)		
<b>PHYSICAL</b>			
Electrical Connection	7 Pin Connector and Mating Connector		
Weight	50 Grams (Approx.) Excluding Cable and Connector		
Pressure Sensing Principle	Fully Active Four Arm Wheatstone Bridge Dielectrically Isolated Silicon on Silicon Patented Leadless Technology		
Mounting Torque	80-120 Inch-Pounds (Max.)		

Note: Custom pressure ranges, accuracies and mechanical configurations available. Dimensions are in inches. Dimensions in parenthesis are in millimeters.

Continuous development and refinement of our products may result in specification changes without notice - all dimensions nominal. (C)