

high temperature bialkali 19 to 51 mm (3/4" to 2") diameter, glass and metal ce

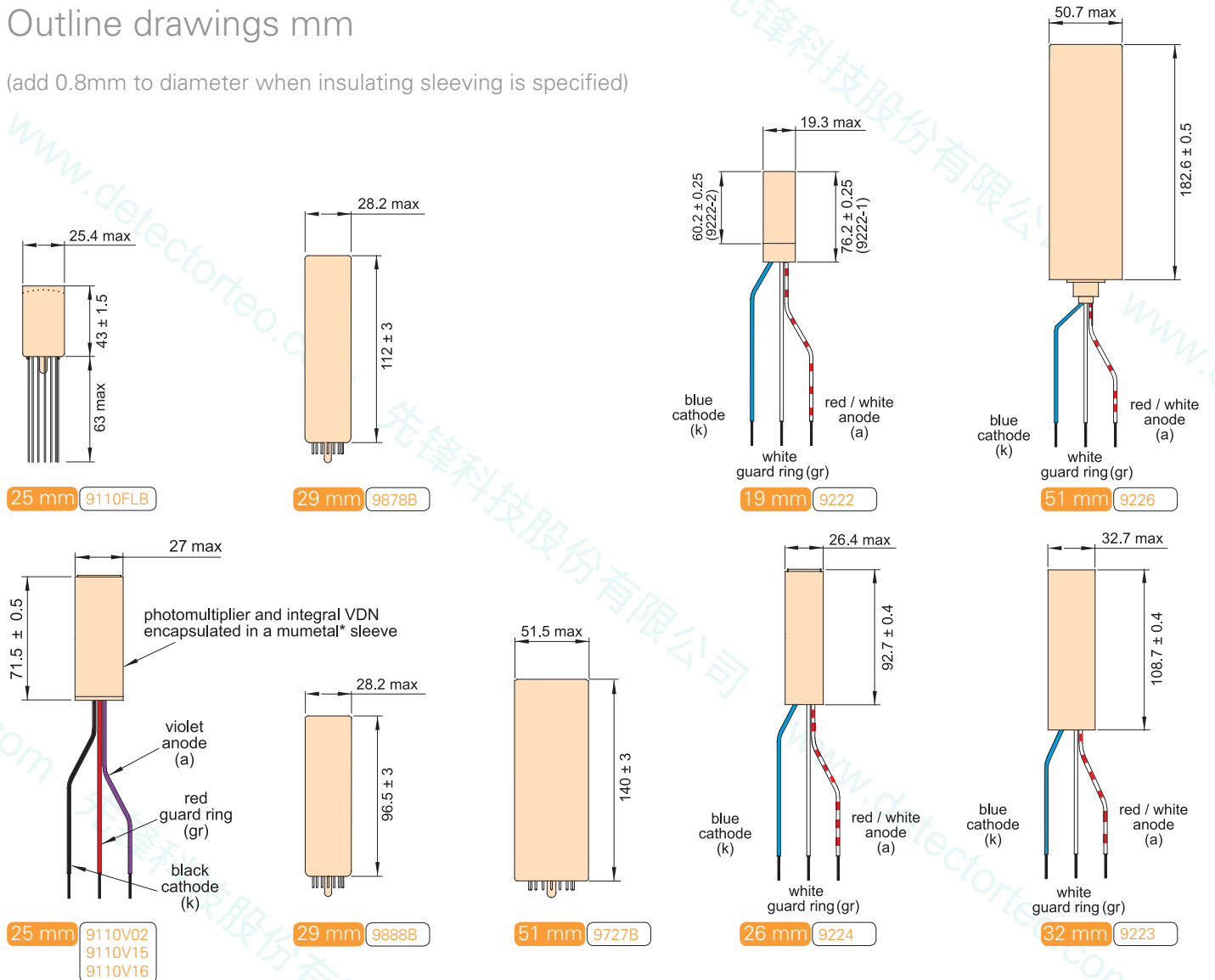
| type | Characteristics | | | | Photocathode sensitivity | | | | | | Photomultiplier performance | | | | | | |
|---------|---------------------|----------------------------|--------------------------|----------------|--------------------------|----------|---------------|--------|------------|------------|-----------------------------|--------------|----------|-----------------------|-------------------------|---------------------|------------------------|
| | diameter nominal mm | active diameter nominal mm | number & type of dynodes | dynode surface | QE (%) peak typical | QE Curve | uA/Lm typical | CB min | CB typical | CR typical | nominal A/Lm or (pC/MeV) | Vk-a typical | Vk-a max | gain X10 ⁶ | dark current typical nA | dark current max nA | max rated A/Lm (gain) |
| 9110FLB | 25 | 22 | 10 CF | BeCu | 17 | B - e | 50 | 4 | 6 | 5 | 10 | 1350 | 1500 | 0.2 | 0.1 | 1 | 50 |
| 9110V02 | 25 | 22 | 10 CF | BeCu | 17 | B - e | 50 | 4 | 6 | 5 | 10 | 1350 | 1500 | 0.2 | 0.1 | 1 | 50 |
| 9110V15 | 25 | 22 | 10 CF | BeCu | 17 | B - e | 50 | 4 | 6 | 5 | 10 | 1350 | 1500 | 0.2 | 0.1 | 1 | 50 |
| 9110V16 | 25 | 22 | 10 CF | BeCu | 17 | B - e | 50 | 4 | 6 | 5 | 10 | 1350 | 1500 | 0.2 | 0.1 | 1 | 50 |
| 9878B | 29 | 25 | 11 BG | BeCu | 17 | B - e | 50 | 4 | 6 | 5 | 20 | 1400 | 1600 | 0.4 | 0.03 | 1 | 50 |
| 9888B | 29 | 25 | 11 BG | BeCu | 17 | B - e | 50 | 4 | 6 | 5 | 20 | 1400 | 1600 | 0.4 | 0.03 | 1 | 50 |
| 9727B | 51 | 46 | 13 VB | BeCu | 17 | B - e | 50 | 4 | 6 | 5 | 50 | 1450 | 1900 | 1 | 0.5 | 5 | 200 |
| 9222 | 19 | 11.5 | 12 VB | BeCu | 17 | S - e | 40 | - | 6 | 2 | (100) | 2100 | 2400 | 1 | 1 | - | (5.0X10 ⁶) |
| 9224 | 26 | 20 | 12 VB | BeCu | 17 | S - e | 40 | - | 6 | 2 | (100) | 1800 | 2200 | 0.33 | 2 | - | (1.7X10 ⁶) |
| 9223 | 32 | 25 | 12 VB | BeCu | 17 | S - e | 40 | - | 6 | 2 | (100) | 1800 | 2100 | 0.33 | 3 | - | (1.7X10 ⁶) |
| 9226 | 51 | 45 | 14 VB | BeCu | 17 | S - e | 40 | - | 6 | 2 | (100) | 1800 | 2100 | 0.33 | 8 | - | (1.7X10 ⁶) |

Note: unless otherwise stated, all of the above information relates to 20 degrees C.

Comprehensive data sheets for all of the above types are available on request, or can be downloaded from www.sensor-ic.com/

Outline drawings mm

(add 0.8mm to diameter when insulating sleeving is specified)



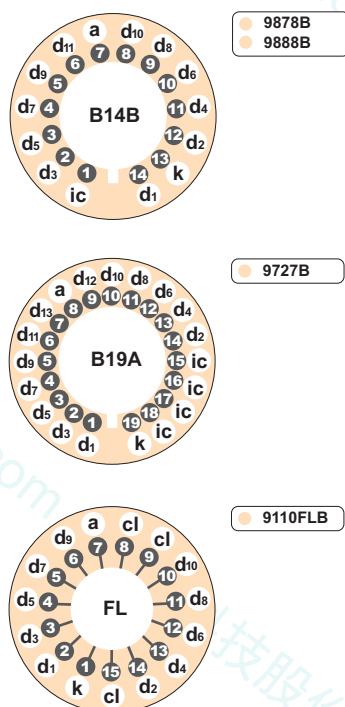
ceramic

| pulse rise time ns | pulse fwhm ns | type | Special features | Accessories | | | |
|--------------------|---------------|---------|---|-------------|----------|------------------------|--------|
| | | | | Socket | Shield | Voltage divider series | |
| | | | | | | passive | active |
| 1.8 | 3.1 | 9110FLB | compact, rugged, operation up to 90 °C. Selected versions for 175 °C. | FL | MS25A | - | - |
| 1.8 | 3.1 | 9110V02 | encapsulated with voltage divider, for operation up to 150 °C. | wires | included | included | n/a |
| 1.8 | 3.1 | 9110V15 | encapsulated with voltage divider, for operation up to 175 °C. | wires | included | included | n/a |
| 1.8 | 3.1 | 9110V16 | encapsulated with voltage divider, for operation up to 90 °C. | wires | included | included | n/a |
| 15 | 30 | 9878B | for operation up to 150 °C, length 112 mm. | B14B | MS30B | - | - |
| 15 | 30 | 9888B | for operation up to 150 °C, length 96.5 mm. | B14B | MS30A | - | - |
| 10 | 22 | 9727B | for operation up to 150 °C. | B19A | MS52C(F) | - | - |
| 6 | 10 | 9222 | ultra rugged, compact, 12mm input diameter, for operation up to 175 °C. | wires | - | included | n/a |
| 8 | 13 | 9224 | ultra rugged, 20mm input diameter, for operation up to 175 °C. | wires | - | included | n/a |
| 9 | 15 | 9223 | ultra rugged, 25mm input diameter, for operation up to 175 °C. | wires | - | included | n/a |
| 12 | 20 | 9226 | ultra rugged, 45mm input diameter, for operation up to 175 °C. | wires | - | included | n/a |

aded from www.et-enterprises.com

Base configurations

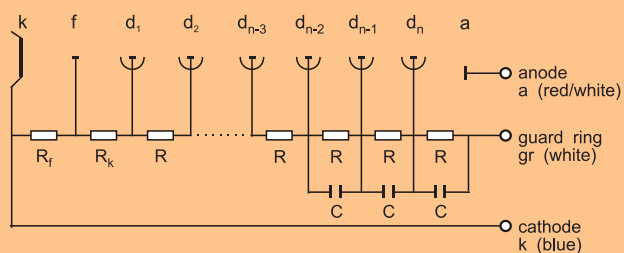
(Viewed from below)



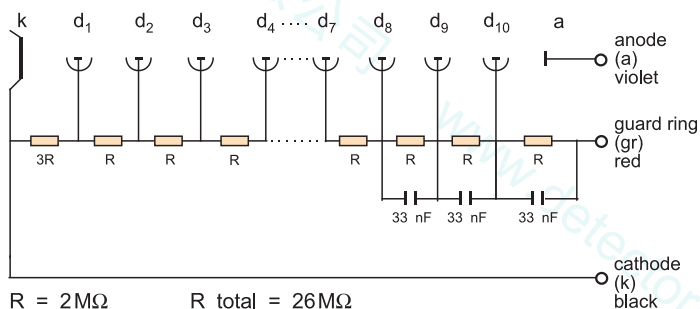
voltage divider distribution for 9222 series

All metal ceramic pmts are supplied as a package, which includes the voltage divider. The standard voltage divider for each type is described by the table and circuit diagram given below. All resistor values in MΩ.

| type | R_f | R_k | R | R_{total} | C |
|------|-------|-------|-----|-------------|--------|
| 9222 | 0.27 | 7.8 | 3.9 | 56 MΩ | 33 nF |
| 9224 | 0 | 7.8 | 3.9 | 56 MΩ | 2.2 nF |
| 9223 | 0.35 | 7.8 | 3.9 | 56 MΩ | 2.2 nF |
| 9226 | 0.27 | 9.0 | 2.4 | 43 MΩ | 2.2 nF |



voltage divider distribution for 9110V series



25 mm
 9110V02
 9110V15
 9110v16