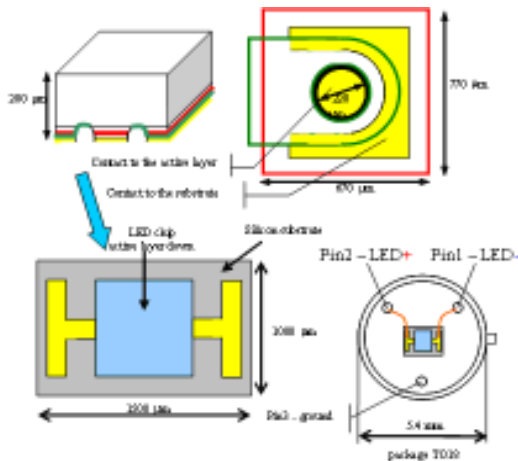


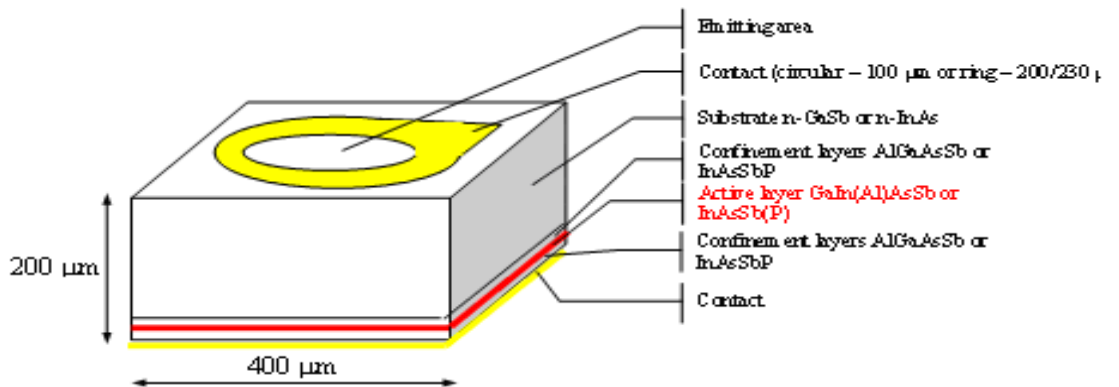
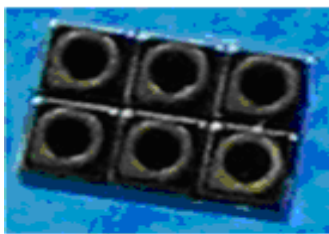


Mid Infrared LED Flip-chip

LEDXXFC models offer the Mid IR LED Flip-chip design. The main advantage of this design is the free top surface. The larger area gives higher total optical power. Cost of LEDs with flip-chips design is higher due to larger size.



Standard Mid Infrared LED chip



This shape of the LED chip is typical for most of IBSG standard Mid IR LEDs models.

Main advantages are:

Small size of the LED chip (close to point source)

High heat loading from the active layer

Homogeneous current flow

Cost effective (due to small size)

As a result we have very good quantum efficiency in a wide current range.



Electro Optical Components, Inc.

5460 Skylane Boulevard, Santa Rosa, CA 95403

Phone: (707) 568-1642 • FAX: (707) 568-1652