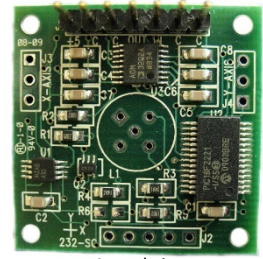




1-6200-006

RS232 Mini Signal Conditioner Board/ with Zeroing



Actual size

Specifications

Power supply voltage	3 to 5 VDC (regulated)
Power supply current	16mA @ 5VDC 11mA @3.3VDC
Operating temp range (board only)	-40°C to +85°C
Storage temp range (board only)	-55°C to 0 +100°C
Angle range	0-100% of sensor range (16 bit, 65535 counts max)
Board dimensions	1.25" x 1.25" or 32mm x 32mm square
Mounting hole and spacing	0.089" dia. and 1.05" (center to center)
Temp. sensor range	-40°C to +125°C (10 bit resolution)

Signal Description J1

Pin #	Signal name	Direction	Description
1	Vcc	Input	Supply voltage input: + 3 to + 5 vdc regulated
2,3	GND	-	Ground – The reference for the digital signals and the supply voltage
4	TX	Output	RS232 transmit output
5	RX	Input	RS232 transmit input
6,7	GND	-	Ground – The reference for the digital signals and the supply voltage

RS232 Communications Port

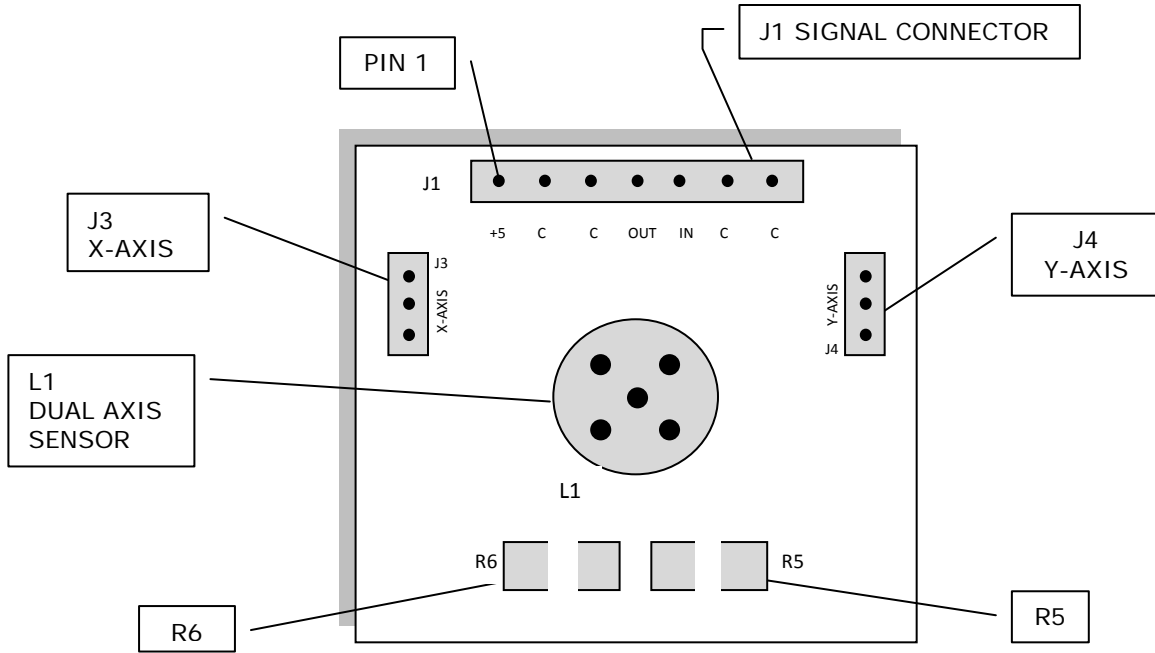
Baud rate	Data bits	Parity	Stop bits
9600	8	None	1

Command Format

Command (ascii – not case sensitive)	Response (ascii)
'X'	X axis value (16 bit -65535 max)
'Y'	y axis value (16 bit -65535 max)
'T'	Temperature value (10 bit – 1023 max)
'S'	Output X axis, Y axis, Temperature at set intervals
'R'	Reset the 'S' command
'1' TO '5'	Set delay for 'S' command, 1 to 5 seconds (default = 1 second)
<i>Software Version 2.00 or later</i>	
Command (ascii – case sensitive)	Response (ascii)
'@' 'Z' '#' (zero sensor to current position)	Zeroing, saving
'&' 'C' '*' (clear zero)	Clearing, saving

NOTE: To convert the 10 bit data returned from the on board MCP9700 use the following formulas,
MCP9700 output voltage = 10 bit value / 1023 * supply voltage
Temperature C = (MCP9700 output voltage – 0.5) / 0.010

SPI signal conditioner board assembly



Sensor Configuration

Sensor Configuration	Description
Dual Axis Sensor mounted on board (standard configuration)	<ul style="list-style-type: none"> - Dual Axis is mounted in location L1 - R5 is 10.0K ohms - R6 is not installed
Single Axis sensors mounted off board	<ul style="list-style-type: none"> - Single axis sensors are connected to J3 (x-axis) and J4 (y-axis) - No sensor is installed in L1 - R5 is not installed - R6 is 1.0K ohms <p>Note: if R5 is not removed then R6 must be less than 100 ohms</p>

NOTE: J2 is for factory use only.

Interface to PC

To PC (DB9)		6200-006	
Pin2	RX	Pin 4	TX
Pin 3	TX	Pin 5	RX
Pin 5	GND	Pin 3	GND