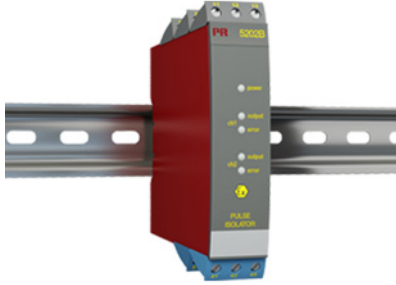


## Pulse isolator

### 5202B



- 2 channels - 2 or 4 outputs
- Dual output
- 5-port 3.75 kVAC galvanic isolation
- Cable error detection
- Universal supply by AC or DC



#### Application

- Pulse isolator with safety barrier for the supply of NAMUR sensors installed in the hazardous area.
- Pulse isolator with safety barrier for the detection of mechanical contacts installed in the hazardous area.
- One input signal can be used on two separate outputs.
- A cable error alarm can be detected on a separate output.

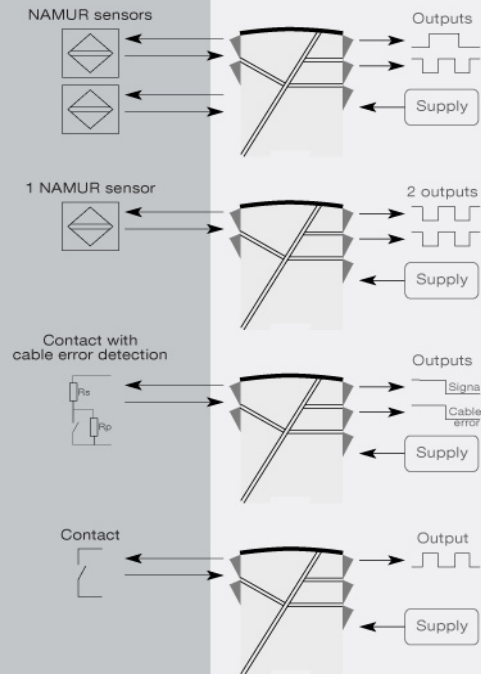
#### Technical characteristics

- PR5202B1 and 5202B2 have relays with change-over contacts or open NPN collectors available in the safe area.
- PR5202B4 has 4 SPST relays, which are activated simultaneously two and two, available in the safe area. Each relay can be programmed to the function N.O. or N.C.
- Inputs, outputs and supply are floating and galvanically separated.
- 5202B is designed according to strict safety requirements and is therefore suitable for application in SIL 2 installations.

#### Mounting / installation

- Mounted vertically or horizontally on a DIN rail. Up to 84 channels per meter can be mounted.

#### Connections



**Order:**

Type	Output
5202B	Open collector NPN : 1
	2x1 relay : 2
	2x2 relays : 4

**Environmental Conditions**

Specifications range..... -20°C to +60°C  
 Calibration temperature..... 20...28°C  
 Relative humidity..... < 95% RH (non-cond.)  
 Protection degree..... IP20

**Mechanical specifications**

Dimensions (HxWxD)..... 109 x 23.5 x 130 mm  
 Weight approx..... 230 g  
 Wire size..... 1 x 2.5 mm<sup>2</sup> stranded wire  
 Screw terminal torque..... 0.5 Nm

**Common specifications**

Supply voltage, universal..... 21.6...253 VAC, 50...60 Hz or 19.2...300 VDC  
 Fuse..... 400 mA SB / 250 VAC  
 Max. power consumption..... ≤ 1.5 W (2 channels), 5202B1 and 5202B2  
 Max. power consumption..... ≤ 2.0 W (2 channels), 5202B4  
 Internal consumption..... ≤ 1.5 W (2 channels), 5202B1 and 5202B2  
 Internal consumption..... ≤ 2.0 W (2 channels), 5202B4  
 Isolation voltage, test / working..... 3.75 kVAC / 250 VAC  
 Auxiliary supplies: NAMUR supply..... 8 VDC / 8 mA  
 EMC immunity influence..... < ±0.5%  
 Extended EMC immunity: NAMUR NE 21, A criterion, burst..... < ±1%

**Input specifications**

Sensor types..... NAMUR according to EN 60947-5-6 / mechanical contact  
 Frequency range..... 0...5 kHz  
 Pulse length..... > 0.1 ms  
 Input resistance..... 1 kΩ  
 Trig level, signal..... < 1.2 mA, > 2.1 mA  
 Trig level, cable fault..... < 0.1 mA, > 6.5 mA

**Output specifications**

Relay output: Max. switching frequency..... 20 Hz  
 Max. voltage..... 250 VRMS  
 Max. current..... 2 AAC  
 Max. AC power..... 100 VA  
 Max. load at 24 VDC..... 1 A  
 Opto, NPN outputs: Max. switching frequency..... 5 kHz  
 Min. pulse length, NPN output..... > 0.1 ms  
 Max. load, current / voltage..... 80 mA / 30 VDC  
 Voltage drop at 25 mA / 80 mA..... < 0.75 VDC / < 2.5 VDC

**Approvals**

EMC..... EN 61326-1  
 LVD..... EN 61010-1  
 PELV/SELV..... IEC 364-4-41 and EN 60742  
 ATEX..... DEMKO 99ATEX127186  
 UL..... UL 913, UL 508  
 GOST R..... Yes  
 GOST Ex..... Yes