

SUNSTAR 商斯达实业集团是集研发、生产、工程、销售、代理经销、技术咨询、信息服务等为一体的高科技企业，是专业高科技电子产品生产厂家，是具有10多年历史的专业电子元器件供应商，是中国最早和最大的仓储式连锁规模经营大型综合电子零部件代理分销商之一，是一家专业代理和分销世界各大品牌IC芯片和电子元器件的连锁经营综合性国际公司，专业经营进口、国产名厂名牌电子元件，型号、种类齐全。在香港、北京、深圳、上海、西安、成都等全国主要电子市场设有直属分公司和产品展示展销窗口门市部专卖店及代理分销商，已在全国范围内建成强大统一的供货和代理分销网络。我们专业代理经销、开发生产电子元器件、集成电路、传感器、微波光电元器件、工控机/DOC/DOM电子盘、专用电路、单片机开发、MCU/DSP/ARM/FPGA软件硬件、二极管、三极管、模块等，是您可靠的一站式现货配套供应商、方案提供商、部件功能模块开发配套商。商斯达实业公司拥有庞大的资料库，有数位毕业于著名高校——有中国电子工业摇篮之称的西安电子科技大学（西军电）并长期从事国防尖端科技研究的高级工程师为您精挑细选、量身订做各种高科技电子元器件，并解决各种技术问题。

微波光电部专业研制、代理经销高频、微波、光纤、光电元器件、组件、部件、模块、整机；电磁兼容元器件、材料、设备；微波CAD、EDA软件、开发测试仿真工具；微波、光纤仪器仪表。欢迎国外高科技微波、光纤厂商将优秀产品介绍到中国、共同开拓市场。长期大量现货专业批发高频、微波、卫星、光纤、电视、CATV器件：晶振、VCO、连接器、PIN开关、变容二极管、开关二极管、低噪晶体管、功率电阻及电容、放大器、功率管、MMIC、混频器、耦合器、功分器、振荡器、合成器、衰减器、滤波器、隔离器、环行器、移相器、调制解调器；光电子器件和组件：红外发射管、红外接收管、光电开关、光敏管、发光二极管和发光二极管组件、半导体激光二极管和激光器组件、光电探测器和光接收组件、光发射接收模块、光纤激光器和光放大器、光调制器、光开关、DWDM用光发射和接收器件、用户接入系统光收发器件与模块、光纤连接器、光纤跳线/尾纤、光衰减器、光纤适配器、光隔离器、光耦合器、光环行器、光复用器/转换器；无线收发芯片和模组、蓝牙芯片和模组。

更多产品请看本公司产品专用销售网站：[欢迎索取免费详细资料、设计指南和光盘；产品凡多，未能尽录，欢迎来电查询](#)

商斯达中国传感器科技信息网：<http://www.sensor-ic.com/>

商斯达工控安防网：<http://www.pc-ps.net/>

商斯达电子元器件网：<http://www.sunstare.com/>

商斯达微波光电产品网：[HTTP://www.rfoe.net/](http://www.rfoe.net/)

商斯达消费电子产品网：<http://www.icasic.com/>

商斯达实业科技产品网：<http://www.sunstars.cn/> 微波元器件销售热线：

地址：深圳市福田区福华路福庆街鸿图大厦1602室

电话：0755-82884100 83397033 83396822 83398585

传真：0755-83376182 (0) 13823648918 MSN: SUNS8888@hotmail.com

邮编：518033 E-mail:szss20@163.com QQ: 195847376

技术支持: 0755-83394033 13501568376

---

## $\lambda/4$ printed monopole antenna for 2.45GHz

---

### 1. Preface

Taking the demand for small size, easy fabrication and low cost into account in the development of low-power radio devices for short-range 2.4GHz applications, a quarter wavelength monopole antenna implemented on the same printed circuit board as the radio module is a good solution. A printed quarter wavelength monopole antenna is very easy to design and can be tuned simply by slight changes in length.

This article presents basic guidelines on how to design such an antenna for use together with the 2.4GHz transceiver and transmitter devices from Nordic Semiconductor.

The described antenna should be fabricated on standard 1.6mm, low cost FR4 printed circuit board (PCB).

### 2. Basic properties of a quarterwave monopole antenna

A quarterwave monopole is a ground plane dependent antenna that must be fed single-ended. The antenna must have a ground plane to be efficient, and ideally the ground plane should spread out at least a quarter wavelength, or more, around the feed-point of the antenna. The size of the ground plane influences the gain, resonance frequency and impedance of the antenna.

The length of the monopole PCB trace mainly determines the resonant frequency of the antenna, but because of the very wide gain bandwidth of a quarterwave monopole, the antenna length is not too critical. But like any other antenna types, the gain of a quarterwave monopole will vary if parameters in the surroundings, such as case/box materials, distance to the ground plane, size of the ground plane, width and thickness of the PCB trace are varied. If any of these parameters are changed, a retuning of the monopole PCB trace length may be necessary for optimum performance in each application.

### 3. Determining the length of the printed monopole antenna

The antenna is fabricated on a standard 1.6mm FR4 substrate material with a typical dielectric constant  $\epsilon_r$  of 4.4 at 2.45GHz.

The width of the monopole trace is  $W = 1.5\text{mm}$ . The wavelength in free air is  $\lambda_0 = 122\text{mm}$ . It may be approximated that the guided wavelength  $\lambda_g$  on the FR4 substrate is about

$$\lambda_g \sim 0.75 \cdot \lambda_0 = 0.75 \cdot 122\text{mm} \sim 92\text{mm}$$

The approximate, physical length of a printed quarterwave monopole antenna is then

$$L = 92\text{mm} / 4 = 23\text{mm}$$



## 1/4 printed monopole antenna for 2.45GHz

---

provided that the size of the available ground plane is close to the ideal as discussed above and that the antenna trace is uniformly surrounded by the FR4 substrate.

When implementing the monopole as a trace on the PCB, the length of the trace should be extended somewhat to allow for some fine-tuning of the antenna to resonance at 2.45GHz. If the size of available ground plane is approaching the ideal size and the antenna trace is uniformly surrounded by the FR4 substrate, then the length of the trace should be extended by about 20%. For an example, see Figure 1a.

If the ground plane size is considerably smaller than the ideal size and/or much of the antenna trace is routed close to the edge of the PCB, then the length of the antenna trace should be extended by about 30%. For an example, see Figure 1b.

### 4. Combining the printed quarterwave monopole with the nRF24xx device RF-layout

The quarterwave monopole must be fed single-ended, hence a differential to single-ended matching network must be used between the nRF24xx antenna interface ANT1/ANT2 and the monopole feed-point. A suggestion on a differential to single-ended matching network can be found in the nRF24xx datasheet.

Figure 1 shows two examples on how a printed quarterwave monopole can be combined with the nRF2401 RF-layout on the same PCB. Figure 1a shows the optimum placement of the antenna trace. With this placement, the antenna is allowed to radiate freely in all directions. The monopole has maximum radiation in the plane normal to the antenna axis, and minimum radiation along the axis. To be omni-directional, the monopole antenna should be placed vertically.

Figure 1b shows a more compact layout of the antenna trace. This layout may have lower antenna gain in the direction of maximum radiation than for the layout shown in Figure 1a, but it will exhibit a more uniform radiation in the horizontal plane if vertical placement is not possible.

When bending the antenna trace like in Figure 1b, be sure to keep the distance (d) between the open end of the antenna trace and the ground plane as large as possible, preferably 10mm or more. Reducing this distance will reduce the gain of the antenna.

There shall be no ground plane on the PCB layer(s) beneath the antenna trace. No ground plane, PCB traces or components should be placed close to the antenna trace.



## 1/4 printed monopole antenna for 2.45GHz

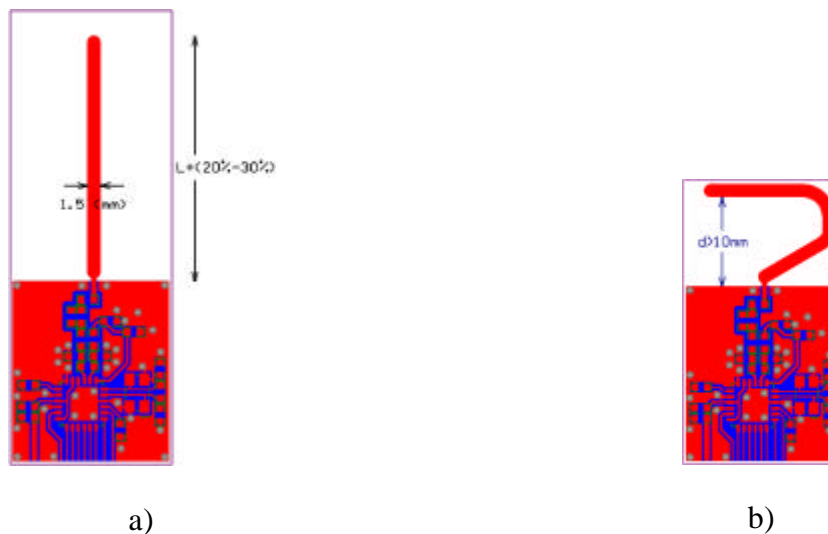


Figure 1. Examples of nRF2401 RF-layout combined with a printed  $\lambda/4$  monopole antenna.

Tuning of the antenna is done simply by cutting the length of the PCB antenna trace until resonance at 2.45GHz is obtained. The antenna must be tuned with the PCB placed inside the case/box (if any) and hand-held/body-worn (if this is a hand-held/body-worn application).

For applications where range performance is not critical the antenna can be tuned by measuring radiated power from the antenna with a spectrum analyzer. For more accurate tuning a vector network analyzer must be used for impedance and SWR (Standing Wave Ratio) measurements.

As shown Figure 1 the PCB antenna trace should be made 20%-30% longer than the estimated theoretical length in order to make tuning possible on prototypes. For the production version of the PCB, the optimum antenna length found on the prototype should be used.



## **1/4 printed monopole antenna for 2.45GHz**

---

### **LIABILITY DISCLAIMER**

Nordic Semiconductor ASA reserves the right to make changes without further notice to the product to improve reliability, function or design. Nordic Semiconductor does not assume any liability arising out of the application or use of any product or circuits described herein.

### **LIFE SUPPORT APPLICATIONS**

These products are not designed for use in life support appliances, devices, or systems where malfunction of these products can reasonably be expected to result in personal injury. Nordic Semiconductor ASA customers using or selling these products for use in such applications do so at their own risk and agree to fully indemnify Nordic Semiconductor ASA for any damages resulting from such improper use or sale.

White paper. Revision Date: 2005-01-21.

All rights reserved ®. Reproduction in whole or in part is prohibited without the prior written permission of the copyright holder.



## 1/4 printed monopole antenna for 2.45GHz

---

### YOUR NOTES



**1/4 printed monopole antenna for 2.45GHz**

---

**Nordic Semiconductor - World Wide Distributor**

**For Your nearest dealer, please see <http://www.nordicsemi.no>**



**Main Office:**

Vestre Rosten 81, N-7075 Tiller, Norway  
Phone: +47 72 89 89 00, Fax: +47 72 89 89 89

**Visit the Nordic Semiconductor ASA website at <http://www.nordicsemi.no>**

---



SUNSTAR 商斯达实业集团是集研发、生产、工程、销售、代理经销、技术咨询、信息服务等为一体的高科技企业，是专业高科技电子产品生产厂家，是具有10多年历史的专业电子元器件供应商，是中国最早和最大的仓储式连锁规模经营大型综合电子零部件代理分销商之一，是一家专业代理和分销世界各大品牌IC芯片和电子元器件的连锁经营综合性国际公司，专业经营进口、国产名厂名牌电子元件，型号、种类齐全。在香港、北京、深圳、上海、西安、成都等全国主要电子市场设有直属分公司和产品展示展销窗口门市部专卖店及代理分销商，已在全国范围内建成强大统一的供货和代理分销网络。我们专业代理经销、开发生产电子元器件、集成电路、传感器、微波光电元器件、工控机/DOC/DOM电子盘、专用电路、单片机开发、MCU/DSP/ARM/FPGA软件硬件、二极管、三极管、模块等，是您可靠的一站式现货配套供应商、方案提供商、部件功能模块开发配套商。商斯达实业公司拥有庞大的资料库，有数位毕业于著名高校——有中国电子工业摇篮之称的西安电子科技大学（西军电）并长期从事国防尖端科技研究的高级工程师为您精挑细选、量身订做各种高科技电子元器件，并解决各种技术问题。

微波光电部专业研制、代理经销高频、微波、光纤、光电元器件、组件、部件、模块、整机；电磁兼容元器件、材料、设备；微波CAD、EDA软件、开发测试仿真工具；微波、光纤仪器仪表。欢迎国外高科技微波、光纤厂商将优秀产品介绍到中国、共同开拓市场。长期大量现货专业批发高频、微波、卫星、光纤、电视、CATV器件：晶振、VCO、连接器、PIN开关、变容二极管、开关二极管、低噪晶体管、功率电阻及电容、放大器、功率管、MMIC、混频器、耦合器、功分器、振荡器、合成器、衰减器、滤波器、隔离器、环行器、移相器、调制解调器；光电子元件和组件：红外发射管、红外接收管、光电开关、光敏管、发光二极管和发光二极管组件、半导体激光二极管和激光器组件、光电探测器和光接收组件、光发射接收模块、光纤激光器和光放大器、光调制器、光开关、DWDM用光发射和接收器件、用户接入系统光收发器件与模块、光纤连接器、光纤跳线/尾纤、光衰减器、光纤适配器、光隔离器、光耦合器、光环行器、光复用器/转换器；无线收发芯片和模组、蓝牙芯片和模组。

更多产品请看本公司产品专用销售网站：[欢迎索取免费详细资料、设计指南和光盘；产品凡多，未能尽录，欢迎来电查询](#)

商斯达中国传感器科技信息网：<http://www.sensor-ic.com/>

商斯达工控安防网：<http://www.pc-ps.net/>

商斯达电子元器件网：<http://www.sunstare.com/>

商斯达微波光电产品网：[HTTP://www.rfoe.net/](http://www.rfoe.net/)

商斯达消费电子产品网：<http://www.icasic.com/>

商斯达实业科技产品网：<http://www.sunstars.cn/> 微波元器件销售热线：

地址：深圳市福田区福华路福庆街鸿图大厦1602室

电话：0755-82884100 83397033 83396822 83398585

传真：0755-83376182 (0) 13823648918 MSN: SUNS8888@hotmail.com

邮编：518033 E-mail:szss20@163.com QQ: 195847376

技术支持: 0755-83394033 13501568376