

ADJUSTABLE HIGH PRECISION SHUNT REGULATOR

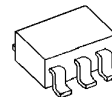
■GENERAL DESCRIPTION

The **NJM2820/ 2821/ 2822** is a 1.25V precision shunt regulator.

High precision voltage accuracy of $\pm 0.7\%$ * is realized by the total optimization from chip design to packaging. In addition, it features low cathode current of 80uA for low current operation.

It is suitable for AC-DC converter secondary circuit, reference voltage applications for A/D and D/A converters, and other applications where precision reference is required.

■PACKAGE OUTLINE

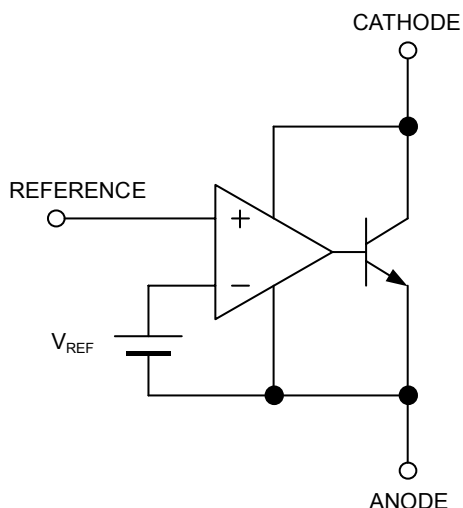


NJM2820F
NJM2821F
NJM2822F

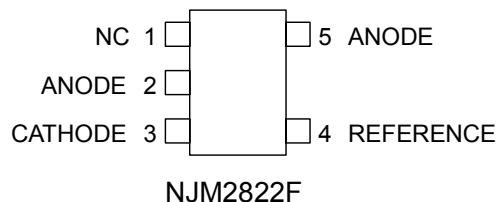
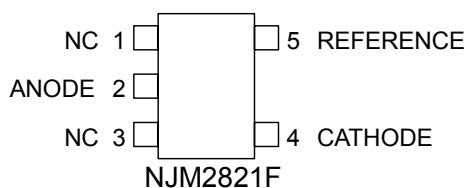
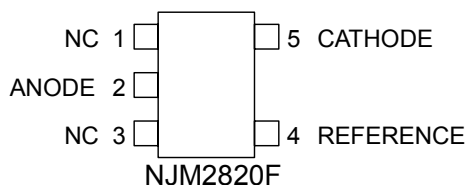
■FEATURES

- High Precision Voltage Reference 1.250V \pm 0.7%
- Flow Soldering*
- Minimum Input Current 80uA typ.
- Operating Voltage V_{REF} to 13V
- Adjustable Output Voltage For External Resistance two Parts
- Bipolar Technology
- Package Outline MTP5

■BLOCK DIAGRAM



■PIN CONFIGURATION



* These contents are based on the result that evaluated the arbitrary sample. The characteristic is not guaranteed. The design and reliability that fully considered flow mounting are checked but the influence by temperature profile etc. is also considered. Please consult with sales representatives for a recommendation temperature profile.

NJM2820, NJM2821, NJM2822

■ABSOLUTE MAXIMUM RATINGS (Ta=25°C)

| PARAMETER | SYMBOL | MAXIMUM RATINGS | UNIT |
|-----------------------------|-----------|-----------------|------|
| Cathode Voltage | V_{KA} | 14 | V |
| Continuous Cathode Current | I_K | -30 ~ 50 | mA |
| Reference Input Current | I_{REF} | -10 ~ 0.05 | mA |
| Power Dissipation | P_D | (MTP5) 200 | mW |
| Operating Temperature Range | T_{OPR} | -40 ~ +85 | °C |
| Storage Temperature Range | T_{STG} | -40 ~ +150 | °C |

■RECOMMENDED OPERATING CONDITIONS (Ta=25°C)

| PARAMETER | SYMBOL | MIN. | TYP. | MAX. | UNIT |
|-----------------|----------|-----------|------|------|------|
| Cathode Voltage | V_{KA} | V_{REF} | - | 13 | V |
| Cathode Current | I_K | 0.5 | - | 30 | mA |

■ELECTRICAL CHARACTERISTICS ($I_K=1mA, Ta=25°C$)

| PARAMETER | SYMBOL | TEST CONDITION | MIN. | TYP. | MAX. | UNIT |
|---|--|--|------|------|-----------|----------|
| Reference Voltage | V_{REF} | $V_{KA}=V_{REF}$ (*1) | 1241 | 1250 | 1259 | mV |
| Reference Voltage Change vs. Cathode Voltage Change | $\frac{\Delta V_{REF}}{\Delta V_{KA}}$ | $ V_{REF} \leq V_{KA} \leq 5V$ (*2) | - | - | ± 2.7 | mV/V |
| | | $5V \leq V_{KA} \leq 13V$ (*2) | - | - | ± 2.0 | mV/V |
| Reference Input Current | I_{REF} | $R1=10k\Omega, R2=\infty$ (*2) | - | 2.0 | 4.0 | μA |
| Minimum Input Current | I_{MIN} | $V_{KA}=V_{REF}, \Delta V_{REF}=1\%$ (*1) | - | 80 | 500 | μA |
| Cathode Current (Off Cond.) | I_{OFF} | $V_{KA}=13V, V_{REF}=0V$ (*3) | - | 0.01 | 1.0 | μA |
| Dynamic Impedance | $ Z_{KA} $ | $V_{KA}=V_{REF}, f \leq 1kHz$ $0.5mA \leq I_K \leq 30mA$ (*1) | - | 0.12 | - | Ω |

■TEMPERATURE CHARACTERISTICS ($I_K=1mA, Ta=-40°C \sim 85°C$)

| PARAMETER | SYMBOL | TEST CONDITION | MIN. | TYP. | MAX. | UNIT |
|--------------------------------|------------------|--------------------------------|------|----------|------|---------|
| Reference Voltage Change | ΔV_{REF} | $V_{KA}=V_{REF}$ (*1) | - | ± 10 | - | mV |
| Reference Input Current Change | ΔI_{REF} | $R1=10k\Omega, R2=\infty$ (*2) | - | 0.5 | - | μA |

$|V_{REF}|$...Reference voltage includes error.

(*1): Test Circuit (Fig.1)

(*2): Test Circuit (Fig.2)

(*3): Test Circuit (Fig.3)

In case of NJM2822, all electrical characteristics are measured referencing to the anode terminal of PIN 5.

■TEST CIRCUIT

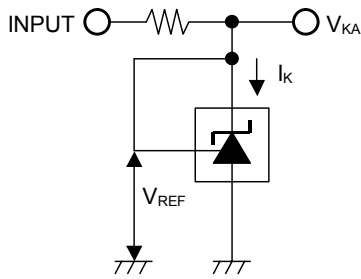


Fig.1 $V_{KA}=V_{REF}$ to test circuit

$$V_O = V_{KA} = V_{REF}$$

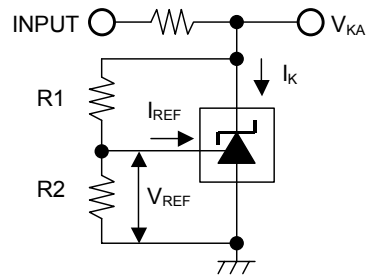


Fig.2 $V_{KA} > V_{REF}$ to test circuit

$$V_O = V_{KA} = V_{REF} \left(1 + \frac{R1}{R2} \right) + I_{REF} \times R1$$

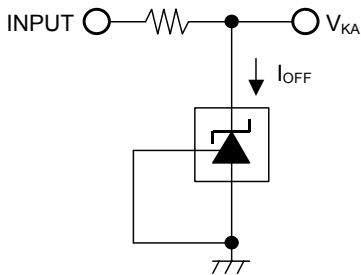


Fig.3 I_{OFF} to test circuit

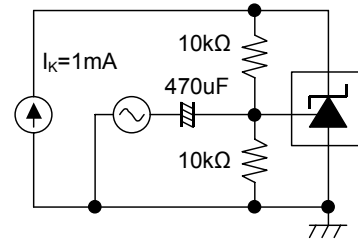
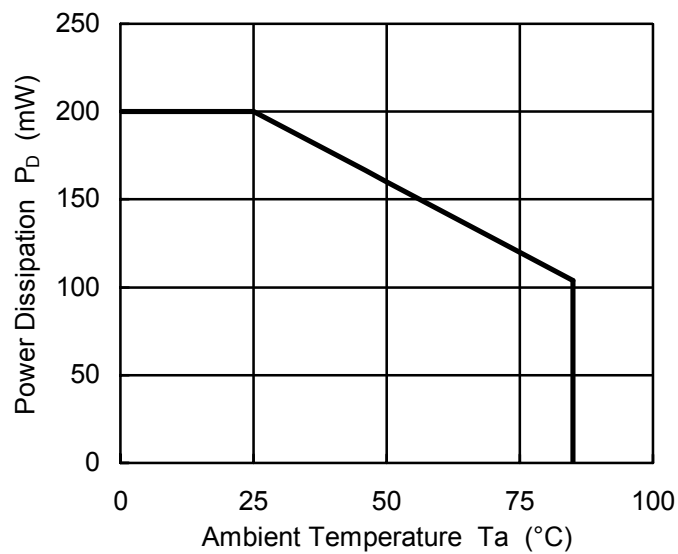


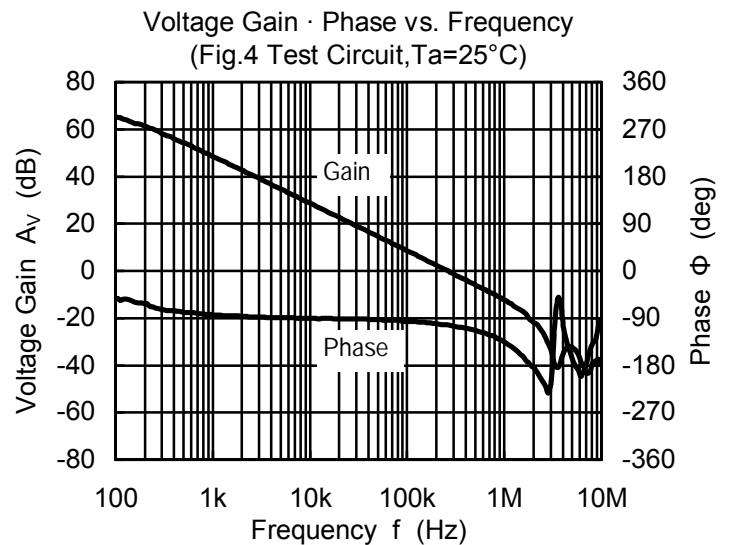
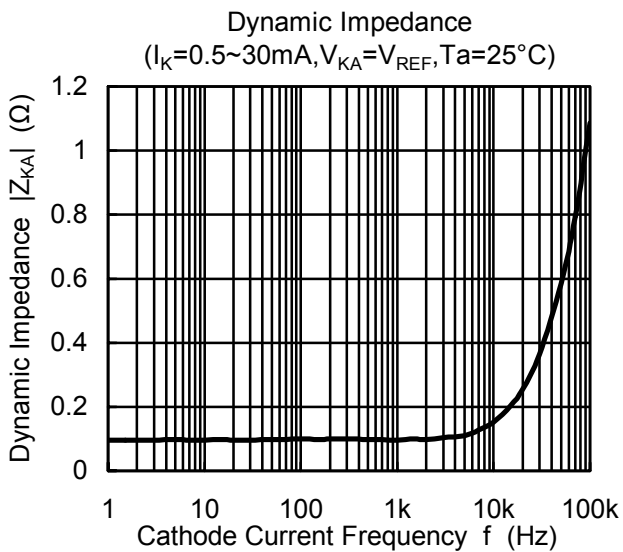
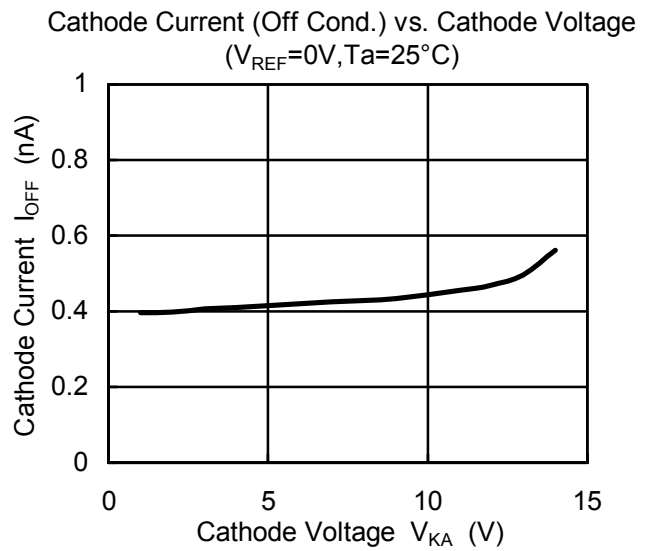
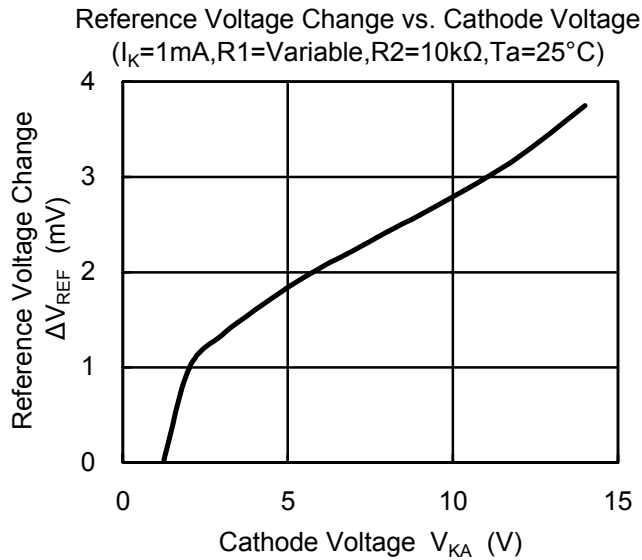
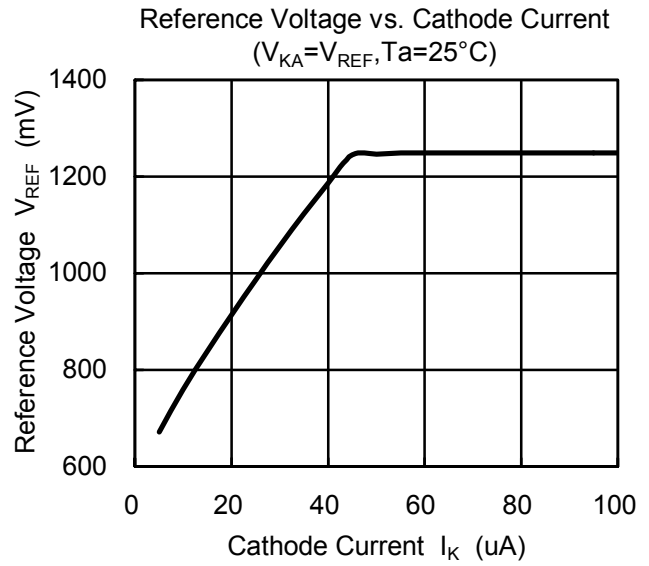
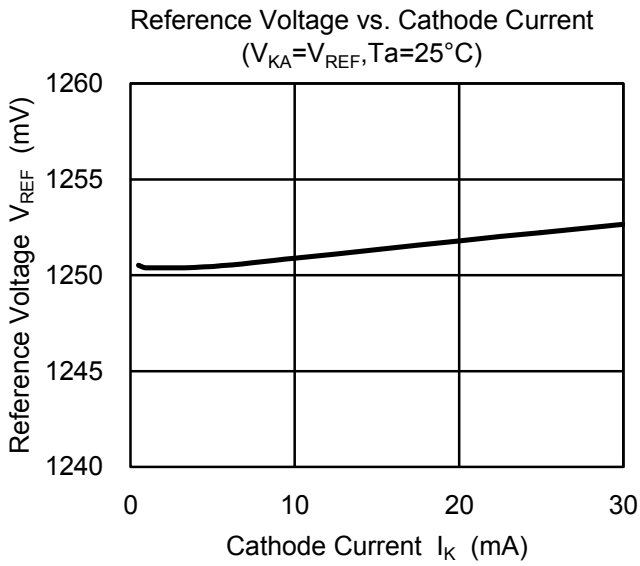
Fig.4 Gain and Phase to test circuit

■POWER DISSIPATION VS. AMBIENT TEMPERATURE

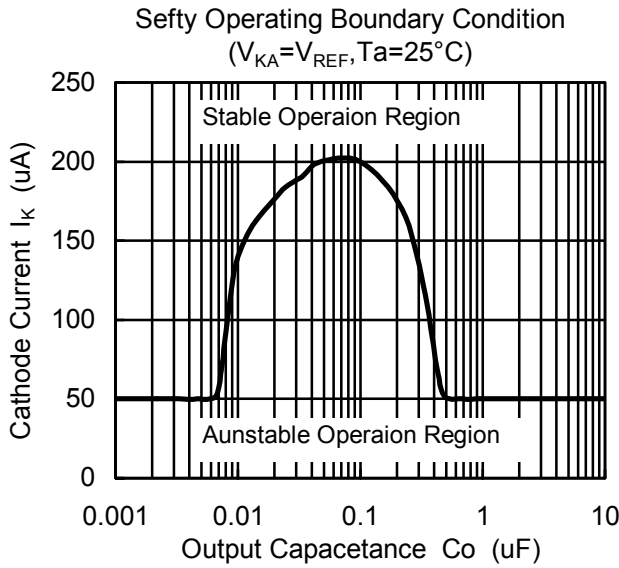


NJM2820, NJM2821, NJM2822

■ TYPICAL CHARACTERISTICS

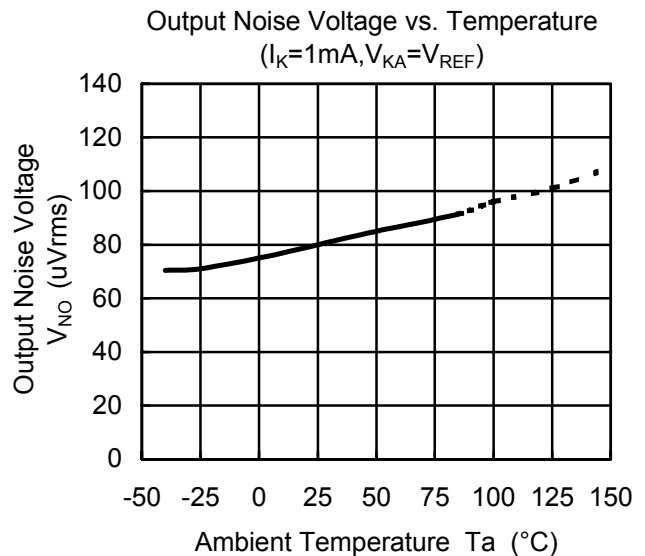
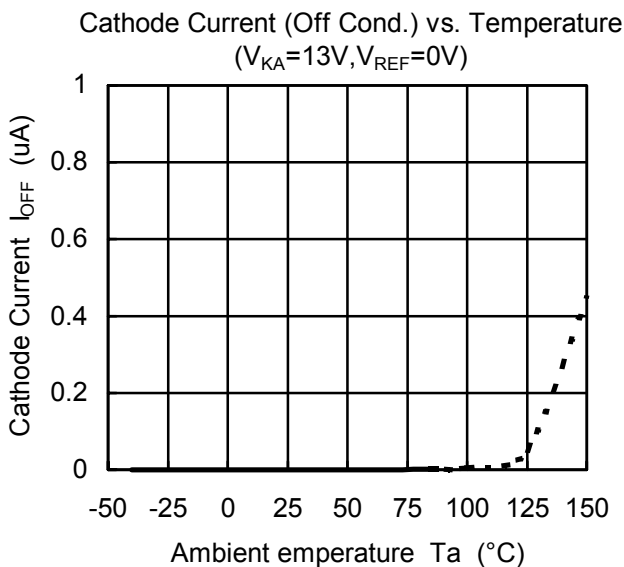
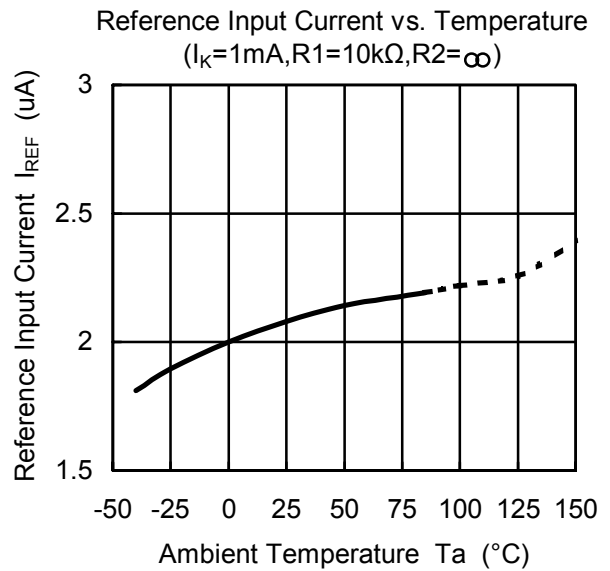
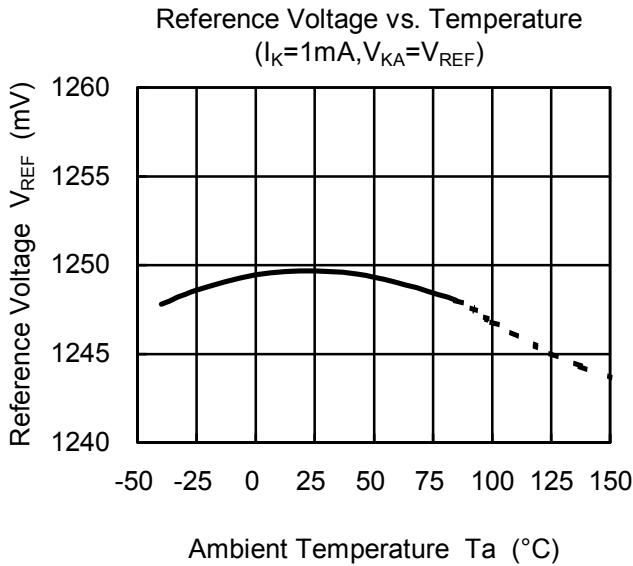


■ TYPICAL CHARACTERISTICS



Note) Oscillation might occur while operating within the range of safety curve.

So that, it is necessary to make ample margins by taking considerations of fluctuation of the device.



MEMO

[CAUTION]
The specifications on this databook are only given for information , without any guarantee as regards either mistakes or omissions. The application circuits in this databook are described only to show representative usages of the product and not intended for the guarantee or permission of any right including the industrial rights.