

PRELIMINARY

SERIAL I/O REAL TIME CLOCK WITH WAKE-UP OUTPUT for EXTERNAL CLOCK

■ GENERAL DESCRIPTION

The NJU6359 series is serial I/O and external clock using Real Time Clock with wake-up function suitable for microprocessor.

It contains timer counter, shift register, and interface controller.

It is able to simplify of the external crystal because of the external clock signal using for 32kHz or 384kHz.

The operating voltage is as wide as 2.0V to 5.5V, consequently, the NJU6359 can count accurate time data even if the back up period. And also the wake-up signal outputs by fixed cycle of 720 μ S.

The data transfer with MPU operated by 2-wire serial transfer.

Furthermore, the long time back up is available as the current consumption during the back up period is a few.

■ PACKAGE OUTLINE



NJU6359V

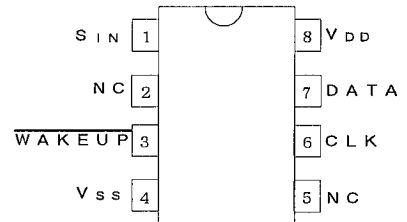


NJU6359C

■ FEATURES

- Operating Voltage : 3.0V \pm 20%
2.0V to 5.5V(The clock operation)
- Low operating current : 0.25 μ A (Typ.) at 3.0V(NJU6359A)
1.0 μ A (Max.) at 3.0V(NJU6359A)
- BCD Counts of Seconds, Minutes, Hours, Days of week,
Date, Month and Year
- Required only 2-port for MCU interface (DATA and CLK)
- Automatic Leap Year Compensation: Up to AD 2099
- WAKE-UP function : 720 μ s cycle
- Package Outline : SSOP 8/Chip
- C-MOS Technology

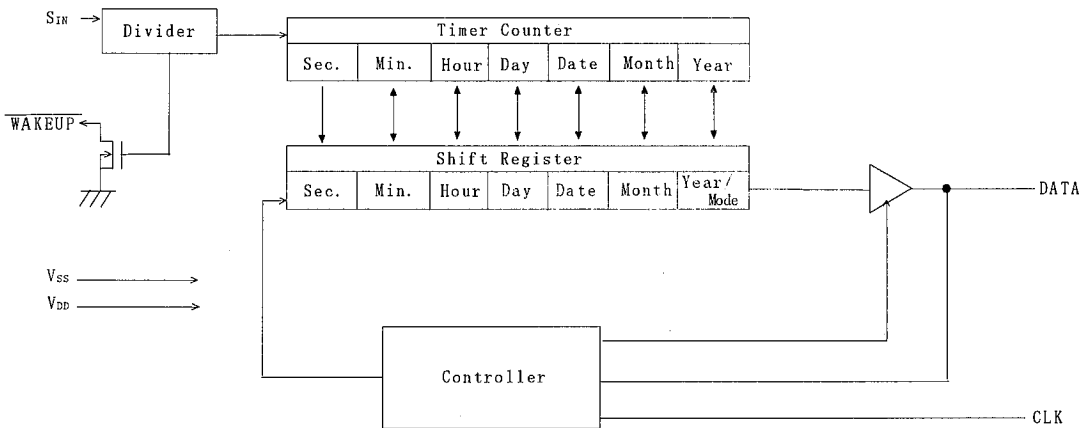
■ PIN CONFIGURATION



■ LINE UP

Device Name	Input frequency
N J U 6 3 5 9 A	3 2 k H z
N J U 6 3 5 9 B	3 8 4 k H z

■ BLOCK DIAGRAM



■ TERMINAL DESCRIPTION

No.	SYMBOL	I/O	F U N C T I O N
1	SIN	I	32kHz or 384kHz input terminal It is different 32kHz and 384kHz by line up. Note) If the accuracy clock is needed, 32.0kHz or 384.0kHz should input. Because, it makes the 1Hz by the dividing clock input from this terminal.
3	WAKE-UP	O	WAKE-UP Output terminal(N-channel open-drain.) It Outputs the "L" level signal in 720 μ S cycle.
4	VSS	Power	GND
6	CLK	I	Clock Input Terminal.(with a pull-down resistor.) The Data Input/Output is synchronized by this clock. When the no accessing, this terminal should be connected to VSS.
7	DATA	I/O	Serial timer data input/output terminal. (with a pull-down resistor.) When the no accessing, this terminal should be connected to VSS. Because the pull-down resistor is valid at the input mode, and, this terminal is VSS. The pull-down resistor is invalid at the output mode.
8	VDD	Power	Power supply
2,5	NC	-	Non connection (Normally open)

FUNCTIONAL DESCRIPTION

1. Timer and System control data format

The NJU6359 using BCD code which consisting of 4 bits per 1 digit.

The calendar function including the last data of each month and the leap year calculation is executed automatically.

The system control data is operated wake-up control.

The unused bit for the Timer and System control data is "0".

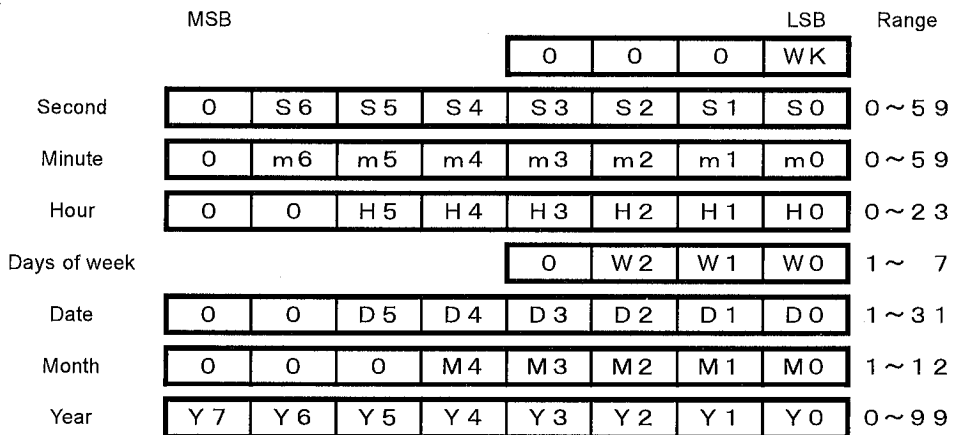
Only the system control data can be set instead of setting whole timer data.

< System control data format >



WK : WAKE-UP control bit

< Timer data format >

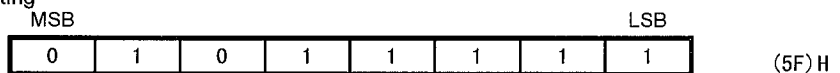


2. Start bit, Stop bit

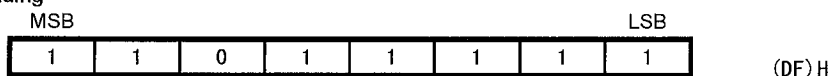
The NJU6359 is decided "Start bit, Stop bit" in order to recognize the start and stop of the Data Input/Output. The fix data needs to input about the timer data write/read, only the system control data write. But, in case of the Stop bit of the timer data read, The NJU6359 generated and outputs. The data is changed over from Output to Input by output of Stop bit. There "Start bit, Stop bit" is using the unused arrangement in BCD code.

< Start bit format >

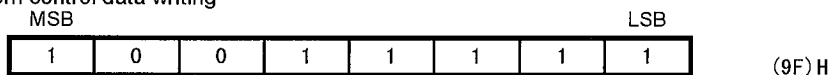
① Timer data writing



② Timer data reading

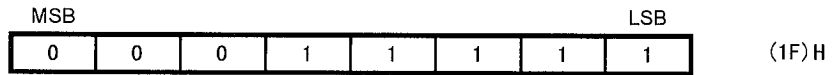


③ Only the system control data writing



< Stop bit format >

① Timer data writing/reading, Only the system control data writing



3. Only the system control data writing

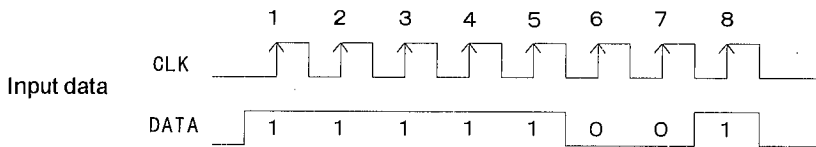
The data can be written into the shift register in the NJU6359 from the DATA terminal synchronized with the rising edge of the clock signal input from the CLK terminal.

At first, Start bit for writing of only the system control data is writing into NJU6359, Therefore into the writing mode.

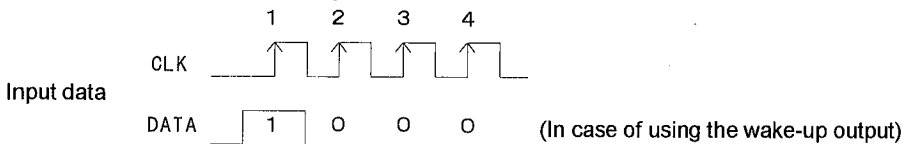
At second, System control data is writing into NJU6359, and the last 4 bits is effective.

At last, Stop bit is writing, after the Writing system control data concluded. The system control data is written into the internal register with the falling edge of the clock signal, after the writing stop bit. The data writing is operated from LSB first.

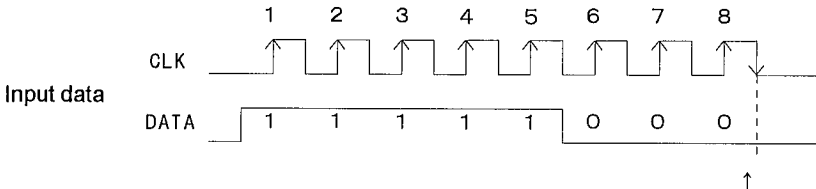
< Writing start bit timing >



< Writing system control data timing >



< Writing stop bit timing >



(The system control data is written into the internal register with the falling edge of the 8th clock.)

4. Timer data writing

The timer data can be written into the shift register in the NJU6359 from the DATA terminal synchronized with the rising edge of the clock signal input from the CLK terminal.

At first, Start bit for writing of the timer data is writing into NJU6359, Therefore into the writing mode. And then, the divider is stop, and the contents of data is cleared.

At second, Timer data is writing into NJU6359, and the last 56 bits is effective.

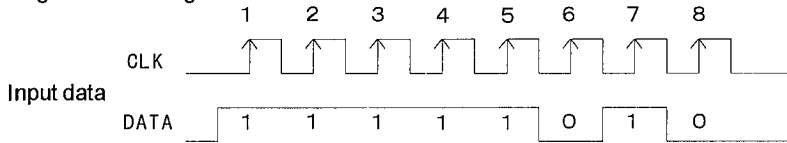
At last, Stop bit is writing, after the Writing timer data concluded. The timer data is written into the internal register with the falling edge of the clock signal, after the writing stop bit. And the divider starts operation. The data writing is operated from LSB first. The writing timer data must execute from the beginning, after the power supply turn on.

Rise time of power supply should be less than 10mS when the power supply turn on. (at VDD=3V)

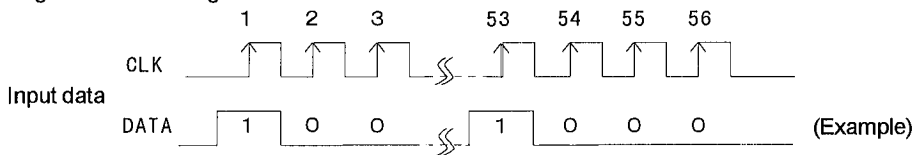
The input data strings are shown below :

Year	Month	Date	Day	Hour	Min.	Sec.	System control
------	-------	------	-----	------	------	------	----------------

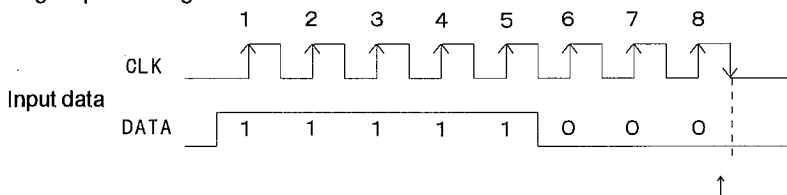
< Writing start bit timing >



< Writing timer data timing >



< Writing stop bit timing >



(The timer data is written into the internal register with the falling edge of the 8th clock, and the divider starts operation.)

5. Timer data reading

The timer data in the shift register shift by synchronized at the falling edge of the clock signal on CLK terminal and output from the DATA terminal.

At first, Start bit for reading of the timer data is writing into NJU6359. The timer data becomes reading mode by the falling edge of the CLK after the writing. And then, the data terminal is output.

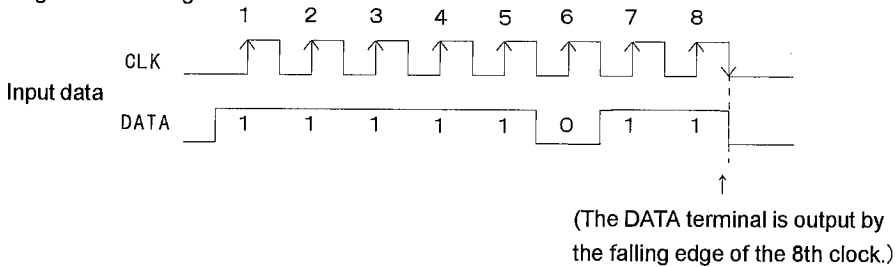
When the timer data becomes reading mode, the timer data is read from the shift register. The timer data is 56 bits.

The stop bit is reading continuously, after the reading timer data concluded. The DATA terminal is changed over from output to input by the falling edge of the CLK after the stop bit writing. The data reading is operated from LSB first.

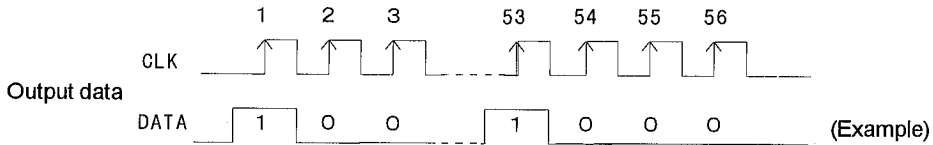
The input data strings are shown below :

Year	Month	Date	Day	Hour	Min.	Sec.	System control
------	-------	------	-----	------	------	------	----------------

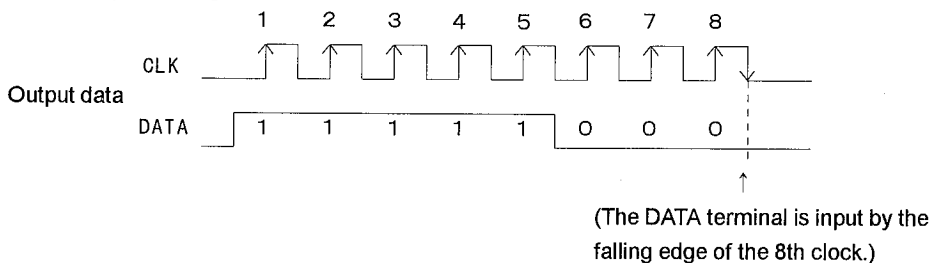
< Writing start bit timing >



< Reading timer data timing >



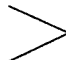
< Reading stop bit timing >



6.Data correction

The NJU6359 have the function of the data correction. This function prevent the error operation of the internal counter by wrong data.

When the in effective data is input, the data is corrected as show below table. However, the data correction is not executed for the system control data. Even if the data "1" is written into the unused bit, the data correction is executed to "0" automatically.

	The ineffective data	The object data of the correction	The corrected data
Second	The data except 0 to 59	S0 to S6	0
Minute	The data except 0 to 59	m0 to m6	0
Hour	The data except 0 to 23	H0 to H5	0
Day	The data except 1 to 7	W0 to W2	1
Date	Jan., Mar., May, Jul., Aug., Oct., Dec.  : The data except 1 to 31 Apr., Jun., Sep., Nov., : The data except 1 to 30 Feb., : The data except 1 to 28 Feb. in the leap year : The data except 1 to 29	D0 to D5	1
Month	The data except 1 to 12	M0 to M4	1
Year	The data except 0 to 99	Y0 to Y7	0

Note) The data correction is not executed for the "start bit, stop bit". Therefore, the wrong data is recognized as "start bit, stop bit".

■ ABSOLUTE MAXIMUM RATINGS

P A R A M E T E R		SYMBOL	R A T I N G	UNIT
Supply Voltage		V _{DD}	-0.3 ~ +6.0	V
Input Voltage		V _I	V _{SS} -0.3 ~ V _{DD} +0.3	V
Operating Temperature		T _{opr}	-30 ~ +80	°C
Storage Temperature		T _{stg}	-40 ~ +125	°C
Power Dissipation	SSOP	P _D	250	mW

Note 1) Decoupling capacitor should be connected between V_{DD} and V_{SS} due to the stabilized operation of the circuit.

■ ELECTRICAL CHARACTERISTICS

DC Characteristics

(Unless Otherwise Specified $V_{DD}=3V \pm 20\%$, $V_{SS}=0V$, $T_a=25^\circ C$)

PARAMETER	SYMBOL	CONDITION		MIN.	TYP.	MAX.	UNIT	NOTE
Operating Voltage	V_{DD}			2.0		5.5	V	
Operating Current	IDD1	Apply to the NJU6359A			0.25	1.0	μA	2
	IDD2	Apply to the NJU6359B			0.85	2.0		3
Output off Leakage Current	IoL	WAKEUP Terminal		-2.0		2.0	μA	
Input Current	IIN	CLK, DATA Terminals	At the Input mode			12.0	μA	
		$V_{DD}, CLK, DATA=3.6V$						
Input Voltage 1	VIH1	SIN Terminal		$V_{DD} \times 0.8$		V_{DD}	V	
	VIL1	SIN Terminal		0		0.2		
Input Voltage 2	VIH2	CLK, DATA Terminals		$V_{DD} \times 0.8$		V_{DD}	V	
	VIL2	CLK, DATA Terminals		V_{SS}		$V_{DD} \times 0.2$		
Output Current	VOH	DATA Terminal	$V_{DD}=2.4V, V_{OH}=1.8V$	0.4			mA	
	VOL1	DATA Terminal	$V_{DD}=2.4V, V_{OL}=0.4V$	1.0				
	VOL2	WAKEUP Terminal	$V_{DD}=2.4V, V_{OL}=0.4V$	1.0				

Note 2) $SIN=32KHz$, $CLK/DATA=0V$, The data is input mode, and the unused wake-up.

Note 3) $SIN=384KHz$, $CLK/DATA=0V$, The data is input mode, and the unused wake-up.

AC Characteristics

(Unless Otherwise Specified $V_{DD}=3V \pm 20\%$, $V_{SS}=0V$, $T_a=25^\circ C$)

PARAMETER	SYMBOL	CONDITIONS	MIN.	TYP.	MAX.	UNIT	NOTE
SIN Input Frequency	FR32			32		KHz	4
	FR384			384			5
SIN Input Operating Frequency	FRD32		30	32	34	KHz	6
	FRD384		382	384	386		7
SIN Input Signal Duty Ratio	DUTY		40	50	60	%	
CLK Pulse "H" Period	tcWH		0.47		5000	μS	
CLK Pulse "L" Period	tcWL		0.47		5000	μS	
DATA Set-up Time Before CLK Rising	twDS		200			nS	
DATA Hold Time After CLK Rising	twDH		200			nS	
DATA Delay Time After CLK Rising	trDD	CL=50pF			200	nS	
Wake-up Cycle	tp		690	720	750	μS	8
Wake-up Pulse "L" Period	tw		90	120	150	μS	8
Input Rise/Fall Time	trF				40	nS	
Power Supply Rising Time	tvON				10	mS	

Note 4) Apply to the NJU6359A. If the accuracy clock is needed, 32.0kHz should input, because a second is made with the input signal is divided by 32,000.

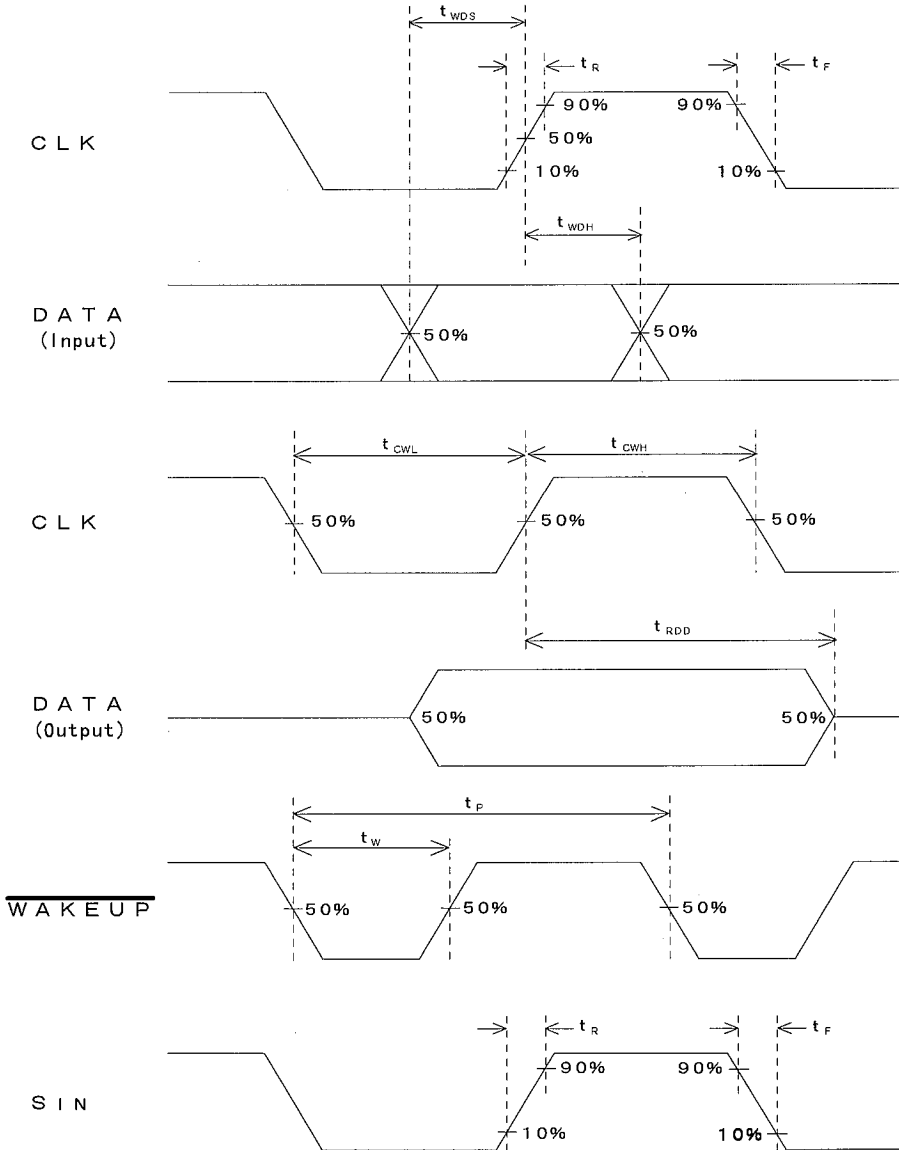
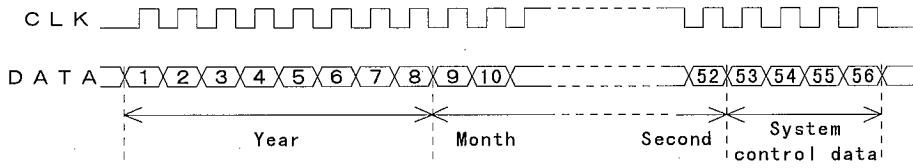
Note 5) Apply to the NJU6359B. If the accuracy clock is needed, 384.0kHz should input, because a second is made with the input signal is divided by 384,000.

Note 6) Apply to the NJU6359A. The regulations guarantees operation, but the accuracy is not available.

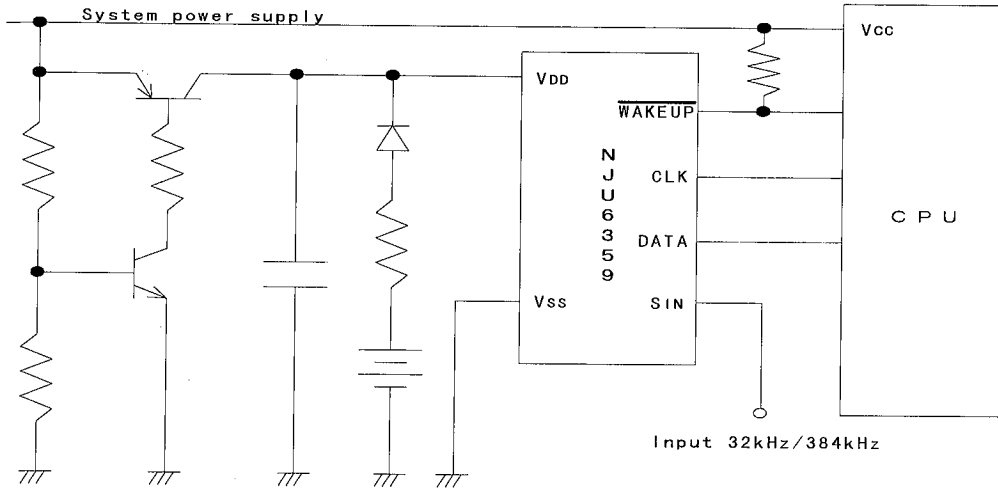
Note 7) Apply to the NJU6359B. The regulations guarantees operation, but the accuracy is not available.

Note 8) Measurement conditions : The WAKEUP terminal is pulled-up to the V_{DD} terminal connected by 470k Ω resistor. The 32kHz (NJU6359A) or 384kHz (NJU6359B) inputs to the SIN terminal.

■ TIMING CHART of Real Time Clock Block



■ APPLICATION CIRCUIT



MEMO

[CAUTION]

The specifications on this databook are only given for information, without any guarantee as regards either mistakes or omissions. The application circuits in this databook are described only to show representative usages of the product and not intended for the guarantee or permission of any right including the industrial rights.

SUNSTAR 商斯达实业集团是集研发、生产、工程、销售、代理经销、技术咨询、信息服务等为一体的高科技企业，是专业高科技电子产品生产厂家，是具有 10 多年历史的专业电子元器件供应商，是中国最早和最大的仓储式连锁规模经营大型综合电子零部件代理分销商之一，是一家专业代理和分销世界各大品牌 IC 芯片和电子元器件的连锁经营综合性国际公司，专业经营进口、国产名厂名牌电子元件，型号、种类齐全。在香港、北京、深圳、上海、西安、成都等全国主要电子市场设有直属分公司和产品展示展销窗口门市部专卖店及代理分销商，已在全国范围内建成强大统一的供货和代理分销网络。我们专业代理经销、开发生产电子元器件、集成电路、传感器、微波光电元器件、工控机/DOC/DOM 电子盘、专用电路、单片机开发、MCU/DSP/ARM/FPGA 软件硬件、二极管、三极管、模块等，是您可靠的一站式现货配套供应商、方案提供商、部件功能模块开发配套商。商斯达实业公司拥有庞大的资料库，有数位毕业于著名高校——有中国电子工业摇篮之称的西安电子科技大学（西军电）并长期从事国防尖端科技研究的高级工程师为您精挑细选、量身订做各种高科技电子元器件，并解决各种技术问题。

微波光电部专业代理经销高频、微波、光纤、光电元器件、组件、部件、模块、整机；电磁兼容元器件、材料、设备；微波 CAD、EDA 软件、开发测试仿真工具；微波、光纤仪器仪表。欢迎国外高科技微波、光纤厂商将优秀产品介绍到中国、共同开拓市场。长期大量现货专业批发高频、微波、卫星、光纤、电视、CATV 器件：晶振、VCO、连接器、PIN 开关、变容二极管、开关二极管、低噪晶体管、功率电阻及电容、放大器、功率管、MMIC、混频器、耦合器、功分器、振荡器、合成器、衰减器、滤波器、隔离器、环行器、移相器、调制解调器；光电子元件和组件：红外发射管、红外接收管、光电开关、光敏管、发光二极管和发光二极管组件、半导体激光二极管和激光器组件、光电探测器和光接收组件、光发射接收模块、光纤激光器和光放大器、光调制器、光开关、DWDM 用光发射和接收器件、用户接入系统光收发器件与模块、光纤连接器、光纤跳线/尾纤、光衰减器、光纤适配器、光隔离器、光耦合器、光环行器、光复用器/转换器；无线收发芯片和模组、蓝牙芯片和模组。

更多产品请看本公司产品专用销售网站：

商斯达中国传感器科技信息网：<http://www.sensor-ic.com/>

商斯达工控安防网：<http://www.pc-ps.net/>

商斯达电子元器件网：<http://www.sunstare.com/>

商斯达微波光电产品网：[HTTP://www.rfoe.net/](http://www.rfoe.net/)

商斯达消费电子产品网：<http://www.icasic.com/>

商斯达实业科技产品网：<http://www.sunstars.cn/> 微波元器件销售热线：

地址：深圳市福田区福华路福庆街鸿图大厦 1602 室

电话：0755-82884100 83397033 83396822 83398585

传真：0755-83376182 (0) 13823648918 MSN: SUNS8888@hotmail.com

邮编：518033 E-mail:szss20@163.com QQ: 195847376

深圳赛格展销部：深圳华强北路赛格电子市场 2583 号 电话：0755-83665529 25059422

技术支持：0755-83394033 13501568376

欢迎索取免费详细资料、设计指南和光盘；产品凡多，未能尽录，欢迎来电查询。

北京分公司：北京海淀区知春路 132 号中发电子大厦 3097 号

TEL: 010-81159046 82615020 13501189838 FAX: 010-62543996

上海分公司：上海市北京东路 668 号上海赛格电子市场 D125 号

TEL: 021-28311762 56703037 13701955389 FAX: 021-56703037

西安分公司：西安高新开发区 20 所(中国电子科技集团导航技术研究所)

西安劳动南路 88 号电子商城二楼 D23 号

TEL: 029-81022619 13072977981 FAX:029-88789382