

## Synchronization of single-channel stepper motor drivers reduces noise and interference

In most applications, a non-synchronized operation causes no problems.

However, in some cases the switching of the two channels interfere, causing audible noise and vibrations from the motor. By synchronizing the switching in the two channels, interference and noise will be cancelled.

### Synchronization of New JRC's stepper motor drivers

The single channel stepper motor drivers NJM3717 and NJM3770A are not synchronized in the typical application of fig. 1, i.e. the PWM switching of one channel is totally independent of the other channel. Note that the Dual channel drivers (NJM3771/ 3772/ 3773/3774 and 3775) all are synchronized by design. The basic operation of the PWM switching is described in the data sheet of each circuit.

### Improvements by synchronization

From the electrical point of view, synchronization 180° out of phase gives some major improvements. With two channels free-running, the peak supply current will be the sum of the current in the two channels, as shown in figure 2. When synchronized 180° out of phase, the two channels will never be on at the same time. Peak supply current is then equal to the peak value of one channel. Higher-order harmonics will also be significantly reduced in amplitude. This means a reduced need for power supply filtering, or better filtering from the same filtering components. Magnetically coupled noise to nearby circuitry will also be reduced as the peak current and higher order harmonics are reduced.

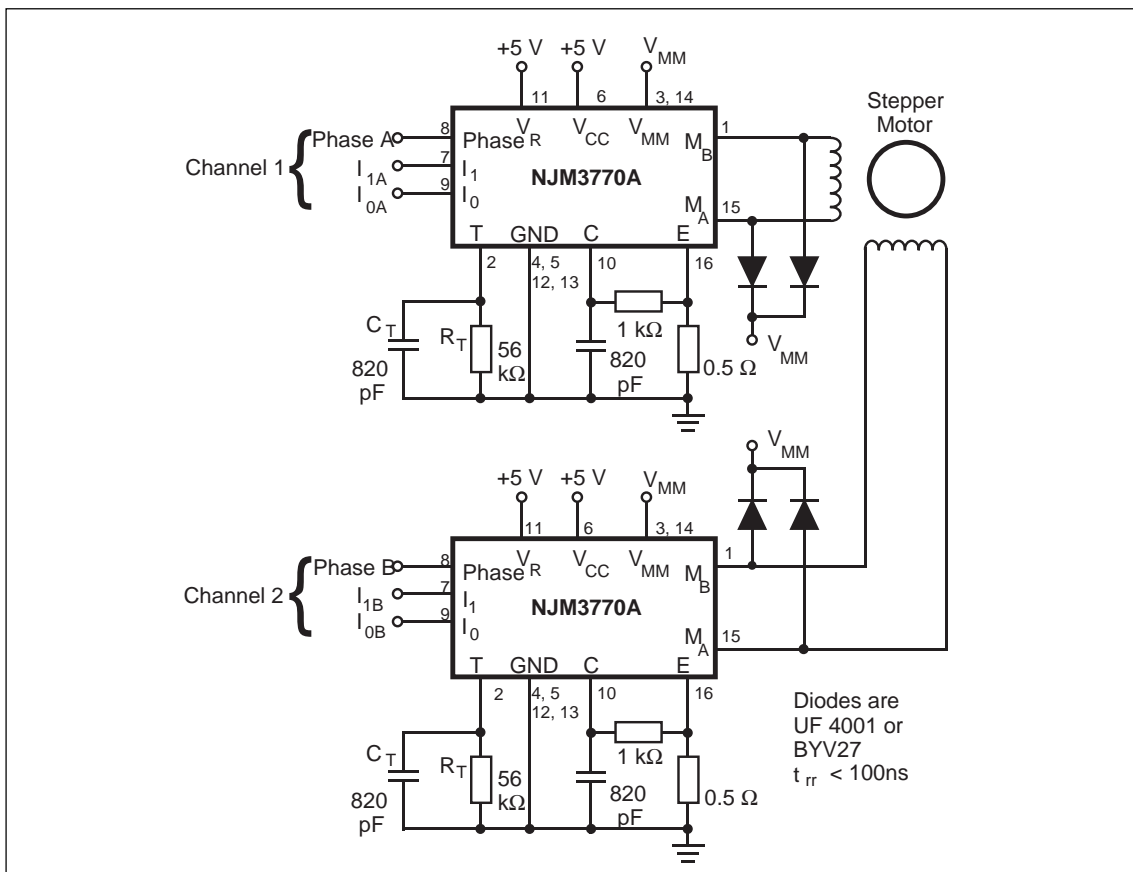


Figure 1. Typical stepper motor driver application with NJM3770A.

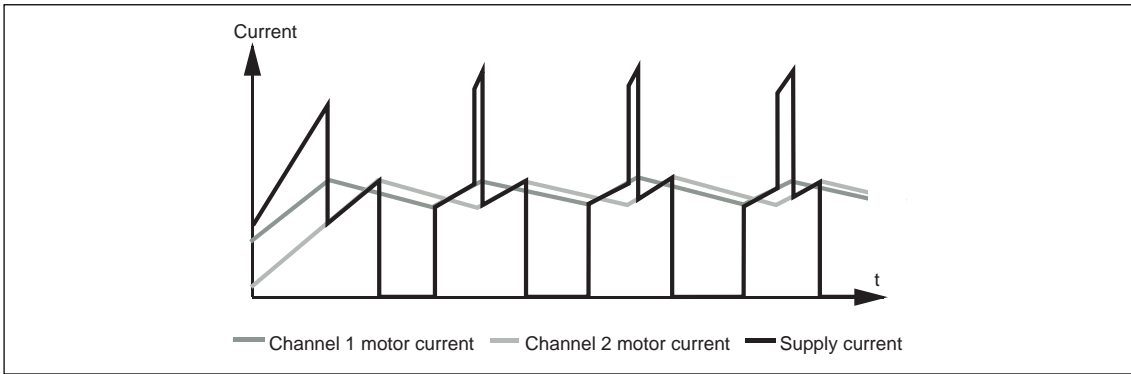


Figure 2. Typical supply current with two channels free-running.

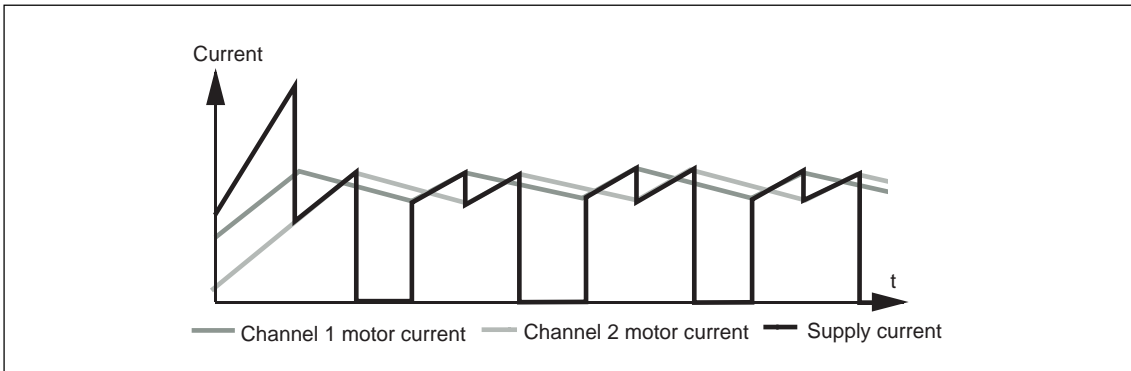


Figure 3. Timing diagram with two channels during synchronized operation.

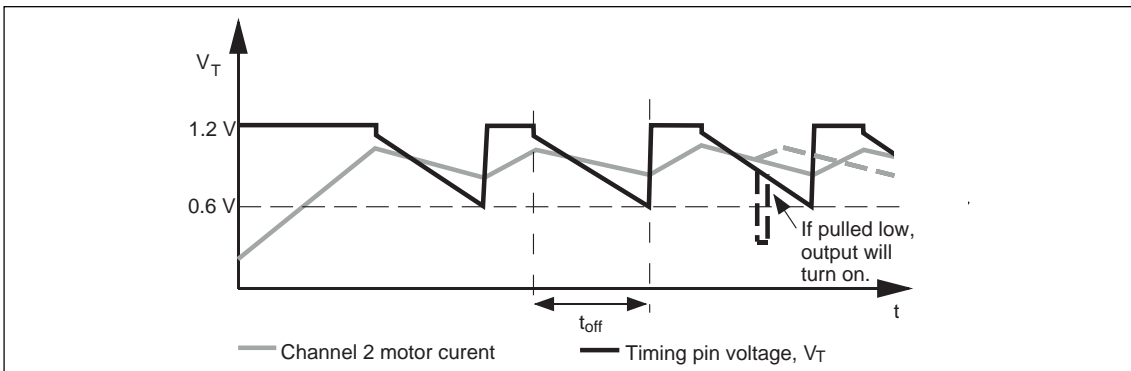


Figure 4. Motor current and  $V_T$  voltage vs. time.

## The design

Fig. 3 shows the timing diagram during synchronized operation. Channel 1 is designated the master, and channel 2 the slave. When synchronized, the off-time of the slave will not be controlled by the internal monostable flip-flop, but by the turn-off of the master. By increasing the timing capacitor value  $C_T$  (and thereby increasing the off-time of the slave), the master will always give the turn-on trigger pulse before the monostable. As long as the total duty cycle (the sum of channel 1 & 2 duty cycles), are less than 100%, the two channel will never be turned on simultaneously.

The operation of the monostable flip-flop is shown in fig 4. In the motor current output-on state, the  $V_T$  voltage is constantly kept at about 1.2 V at the T (Timing) pin. When the motor peak current is reached, the monostable flip-flop is triggered, and  $V_T$  decreases as  $C_T$  discharges through  $R_T$ . At  $V_T=0.6$  V a comparator resets the monostable flip-flop, and turns the output on again. An external sinking output connected to the T-pin could discharge  $C_T$  in a very short time, and induce an immediate turn-on.

The circuit diagram is shown in figure 5. A 4093 CMOS Schmitt trigger NAND-gate and some external components form an edge detector to generate the sync pulses.

Gate #1 detects the off-state of channel 1. The voltage divider resistor network including R1 and R2 reduces the input voltage swing to equal the 4093 supply voltage. If  $V_{MM}$  is below 15 V, 4093 can be fed by  $V_{MM}$ , and the voltage divider network could be omitted.

In the off-state both  $M_{A1}$  and  $M_{A2}$  are high ( $=V_{MM}$ ) giving a low output of gate #1. Gate #2 inverts the signal, and sends it through a high pass filter, acting as a positive edge detector. For each positive transition of gate #2 (occurring when channel 1 is turned off), a short negative pulse is generated at the output of gate #3. The other input of gate #3 (Sync) may be used as a disable input. The diode at the output of gate #3 makes it a sinking output. At each negative pulse at gate #3 output, the  $C_T$  capacitor of 1.5 nF is discharged, and the output of the driver accordingly turned on.

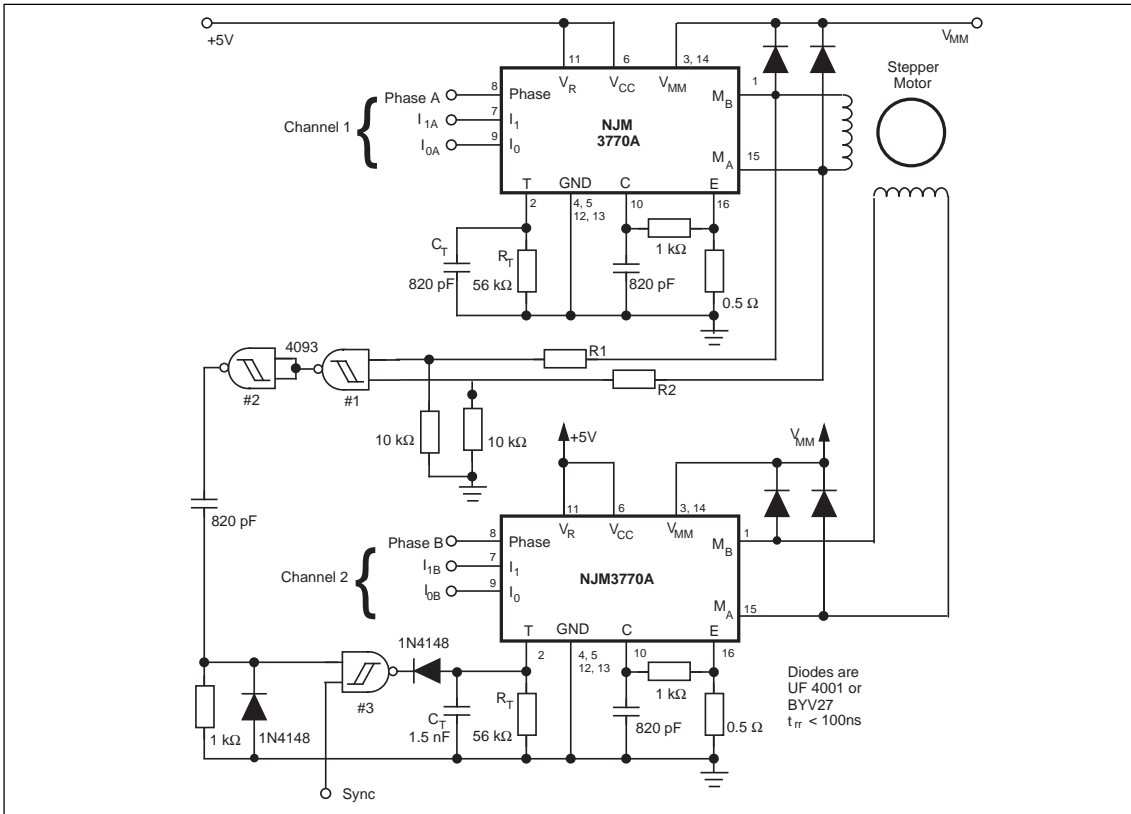


Figure 5. Two NJM3770A in synchronized operation using a master/slave configuration.

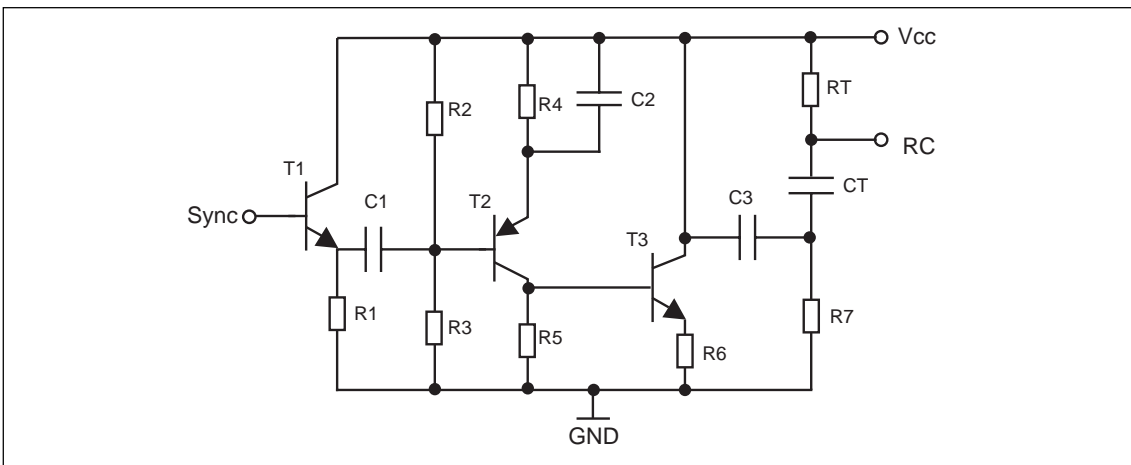


Figure 6. Synchronising circuit Schematics.

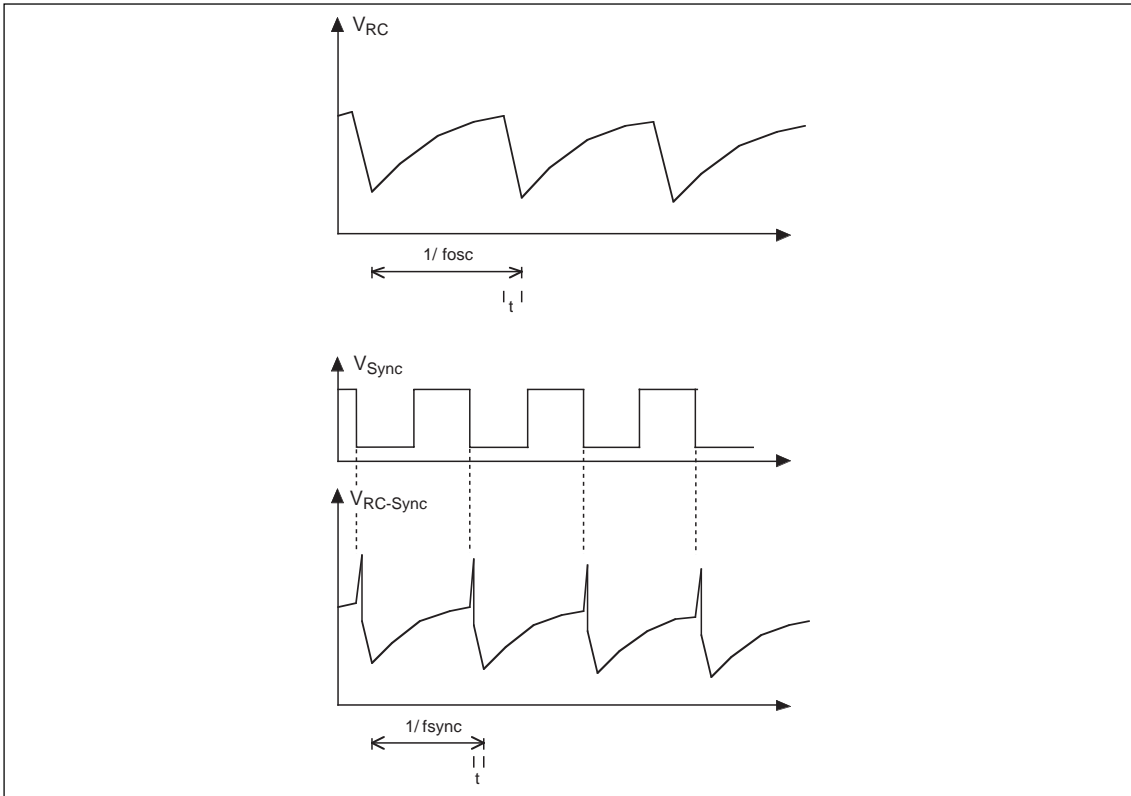


Figure 7. Signal at the RC input and sync pulse, without sync pulse, sync pulse and with syncpulse.

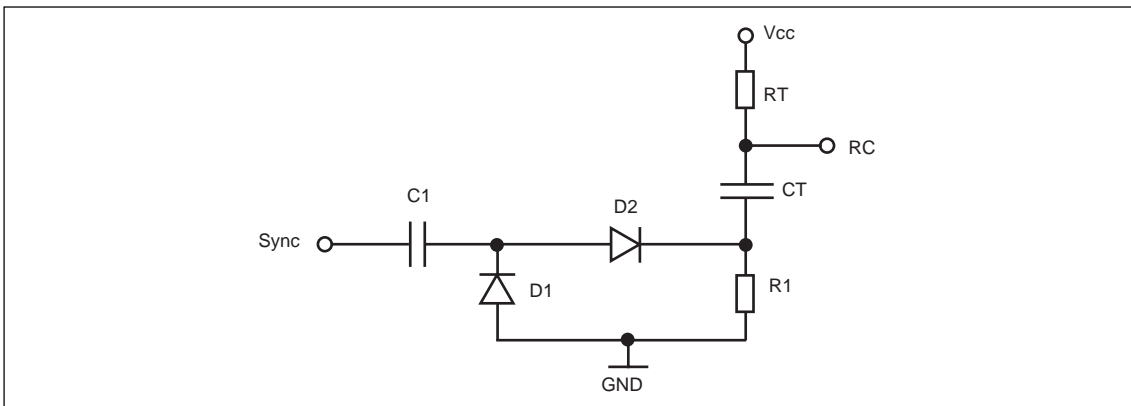


Figure 8. Synchronise circuit for an square wave sync signal.

### Synchronising the RC Oscillator On NJM3771 to NJM3777

#### Method 1

To synchronise the RC oscillator with an external signal You will need some extra transistors, resistors and capacitors. The synchronising circuit in figure 6 works to synchronise two RC oscillators or to synchronise the RC oscillator with an external sync pulse.

The free RC oscillator frequency must be lower than the sync frequency. For component value se table below.

T1, T3	BC548B
T2	BC558B
R1,R5	1k resistor
R2,R3,R4	10k resistor
R6	470k resistor
R7	24 resistor
RT,CT	Should be chosen after the sync. frequency.

In order to get the sync circuit to work properly the free oscillator frequency should be as close as possible to the sync frequency. It is also important that the negative slope of the RC signal (see figure 7) is minimum 1  $\mu$ s in order to have the RS flip flop in the stepper motor driver circuit set.

To calculate your free oscillator frequency  $f_{osc}$  you can use the approximation formula below:

$$f_{osc} = 1 / ( 0.77 \cdot R_T \cdot C_T )$$

If your time t ( see figure 7 ) is too short, less than 1  $\mu$ s, then you can enlarge it by increasing the value of  $C_T$  and at the same time decrease the value of  $R_T$  to keep the same frequency  $f_{osc}$ .

This method is also useful if you want to synchronise two RC oscillators. You must choose one to be the master and the other to be slave. The master oscillator must have a higher frequency than the slave oscillators. The same synchronise circuit as in figure 6 can be used.

### **Method 2**

With one capacitor and two diodes you can synchronise the RC oscillator with an external square wave.

C1 = 10 nF

D1,D2 = 1N4148

R1 = 24  $\Omega$ .

SUNSTAR 商斯达实业集团是集研发、生产、工程、销售、代理经销、技术咨询、信息服务等为一体的高科技企业，是专业高科技电子产品生产厂家，是具有 10 多年历史的专业电子元器件供应商，是中国最早和最大的仓储式连锁规模经营大型综合电子零部件代理分销商之一，是一家专业代理和分销世界各大品牌 IC 芯片和电子元器件的连锁经营综合性国际公司，专业经营进口、国产名厂名牌电子元件，型号、种类齐全。在香港、北京、深圳、上海、西安、成都等全国主要电子市场设有直属分公司和产品展示展销窗口门市部专卖店及代理分销商，已在全国范围内建成强大统一的供货和代理分销网络。我们专业代理经销、开发生产电子元器件、集成电路、传感器、微波光电元器件、工控机/DOC/DOM 电子盘、专用电路、单片机开发、MCU/DSP/ARM/FPGA 软件硬件、二极管、三极管、模块等，是您可靠的一站式现货配套供应商、方案提供商、部件功能模块开发配套商。商斯达实业公司拥有庞大的资料库，有数位毕业于著名高校——有中国电子工业摇篮之称的西安电子科技大学（西军电）并长期从事国防尖端科技研究的高级工程师为您精挑细选、量身订做各种高科技电子元器件，并解决各种技术问题。

微波光电部专业代理经销高频、微波、光纤、光电元器件、组件、部件、模块、整机；电磁兼容元器件、材料、设备；微波 CAD、EDA 软件、开发测试仿真工具；微波、光纤仪器仪表。欢迎国外高科技微波、光纤厂商将优秀产品介绍到中国、共同开拓市场。长期大量现货专业批发高频、微波、卫星、光纤、电视、CATV 器件：晶振、VCO、连接器、PIN 开关、变容二极管、开关二极管、低噪晶体管、功率电阻及电容、放大器、功率管、MMIC、混频器、耦合器、功分器、振荡器、合成器、衰减器、滤波器、隔离器、环行器、移相器、调制解调器；光电子元件和组件：红外发射管、红外接收管、光电开关、光敏管、发光二极管和发光二极管组件、半导体激光二极管和激光器组件、光电探测器和光接收组件、光发射接收模块、光纤激光器和光放大器、光调制器、光开关、DWDM 用光发射和接收器件、用户接入系统光收发器件与模块、光纤连接器、光纤跳线/尾纤、光衰减器、光纤适配器、光隔离器、光耦合器、光环行器、光复用器/转换器；无线收发芯片和模组、蓝牙芯片和模组。

更多产品请看本公司产品专用销售网站：

商斯达中国传感器科技信息网：<http://www.sensor-ic.com/>

商斯达工控安防网：<http://www.pc-ps.net/>

商斯达电子元器件网：<http://www.sunstare.com/>

商斯达微波光电产品网：[HTTP://www.rfoe.net/](http://www.rfoe.net/)

商斯达消费电子产品网：<http://www.icasic.com/>

商斯达实业科技产品网：<http://www.sunstars.cn/> 微波元器件销售热线：

地址：深圳市福田区福华路福庆街鸿图大厦 1602 室

电话：0755-82884100 83397033 83396822 83398585

传真：0755-83376182 (0) 13823648918 MSN: SUNS8888@hotmail.com

邮编：518033 E-mail:[szss20@163.com](mailto:szss20@163.com) QQ: 195847376

深圳赛格展销部：深圳华强北路赛格电子市场 2583 号 电话：0755-83665529 25059422

技术支持：0755-83394033 13501568376

欢迎索取免费详细资料、设计指南和光盘；产品凡多，未能尽录，欢迎来电查询。

北京分公司：北京海淀区知春路 132 号中发电子大厦 3097 号

TEL: 010-81159046 82615020 13501189838 FAX: 010-62543996

上海分公司：上海市北京东路 668 号上海赛格电子市场 D125 号

TEL: 021-28311762 56703037 13701955389 FAX: 021-56703037

西安分公司：西安高新开发区 20 所(中国电子科技集团导航技术研究所)

西安劳动南路 88 号电子商城二楼 D23 号

TEL: 029-81022619 13072977981 FAX:029-88789382