

1/4 DUTY LCD DRIVER

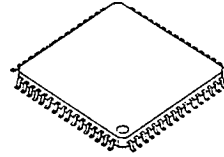
■ GENERAL DESCRIPTION

The NJU6433 is a 1/4 duty LCD driver for segment type LCD panel.

The LCD driver consists of 4-common and 50-segment drives up to 200 segments.

The NJU6433 is useful for the digital tuning system or others segment type display driver.

■ PACKAGE OUTLINE

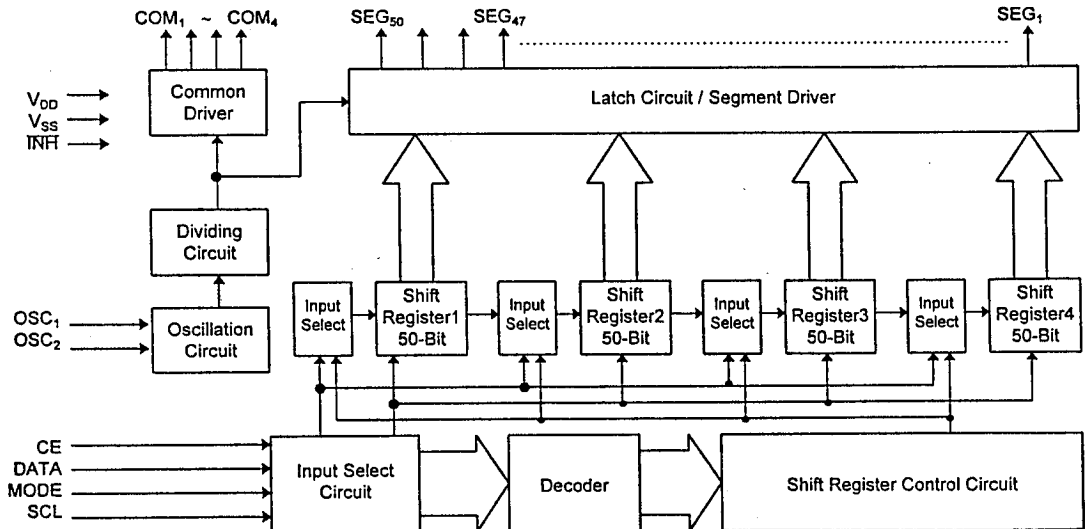


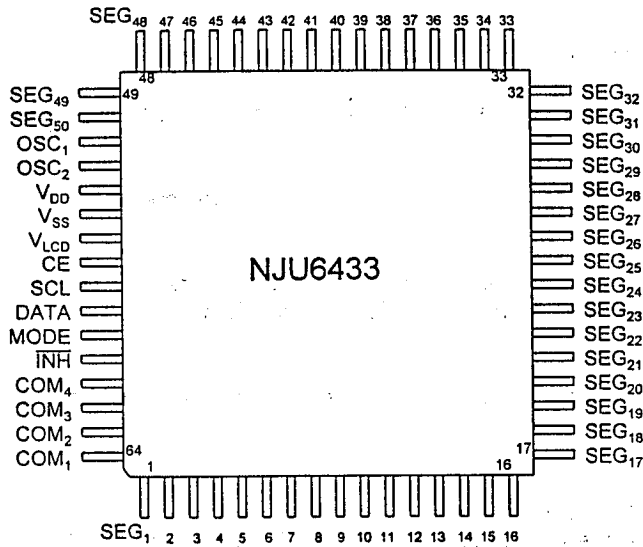
NJU6433F

■ FEATURES

- 50 Segment Drivers
- Duty Ratio 1/4 (Up to 200-Segments)
- Serial Data Transmission (Shift Clock 2MHz max.)
- Oscillation Circuit On-chip (External Resistance Required)
- Display Off Function (INH Terminal)
- Operating Voltage --- 2.4~5.5V
- LCD Driving Voltage --- 6.5V Max.
- Package Outline --- QFP 64 (D1, G1)
- C-MOS Technology

■ BLOCK DIAGRAM



■ PIN CONFIGURATION

■ TERMINAL DESCRIPTION

NO.	SYMBOL	F U N C T I O N
1~50	SEG ₁ ~ SEG ₅₀	LCD Segment Output Terminals
51	OSC ₁	Oscillation Terminals : External resistance is connected to these terminals.
52	OSC ₂	
53	V _{DD}	Power Supply (+5V)
54	V _{SS}	Power Supply (0V)
55	V _{LCD}	Power Supply for LCD Driving The relation : $V_{DD} - V_{LCD} \leq 1.3V_{DD}$, $V_{LCD} \geq V_{SS}$ must be maintained.
56	CE	Chip Enable Signal Input Terminal : "H" : LCD display data and mode setting data input "L" : Disable Fall Edge : LCD display data latch
57	SCL	Serial Data Transmission Clock Input Terminal : LCD display and Mode setting data are input synchronized SCL clock signal rise edge.
58	DATA	Serial Data Input Terminal Data input timing : SCL clock rise edge
59	MODE	Data or Mode Select Terminal "H" : Data input mode "L" : LCD display data input mode (refer the mode setting table for mode setting contents)
60	INH	Display-Off Control Terminal : When display goes to off, the display data in the shift-register is retained. "H" : Display-On "L" : Display-Off
61~64	COM ₄ ~COM ₁	LCD Common Output Terminals

FUNCTIONAL DESCRIPTION

(1) Operation of each block

(1-1) Oscillation Circuit :

The oscillation circuit operate by connecting external resistance (capacitance is incorporated).

This circuit provides the clock signal to both common and segment drivers.

(1-2) Divider Circuit

This circuit divides the oscillating signal to generate the common and segment timing.

(1-3) Shift-Register

When the CE terminal is "H" (Enable mode), the display data is transferred to the shift-register synchronized by the shift clock on the SCL terminal.

(1-4) Latch Circuit and Segment Driver

When the CE signal falling, the display data is latched, and the data controls the segment signal of display-on/off.

(2) Data Input Format

(2-1) Input Data Correspond to Segment Status

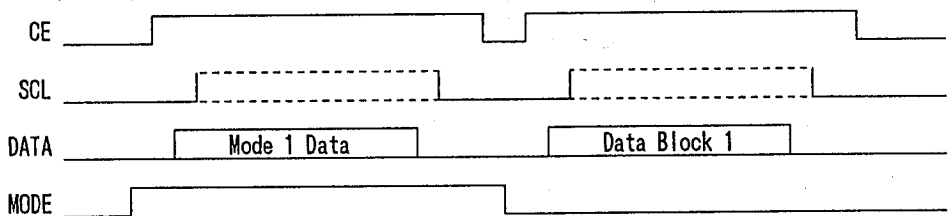
The "H" input data correspond to segment "ON" and "L" correspond to "OFF".

Data Dxxx	Segment Status
"H"	ON
"L"	OFF

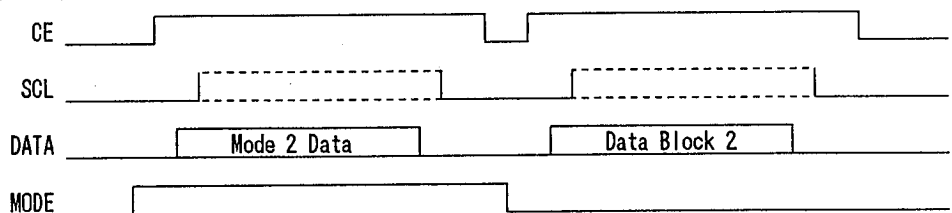
(2-2) Write to Shift-register

Write to shift-register performs Mode setting data writing and LCD display data writing.

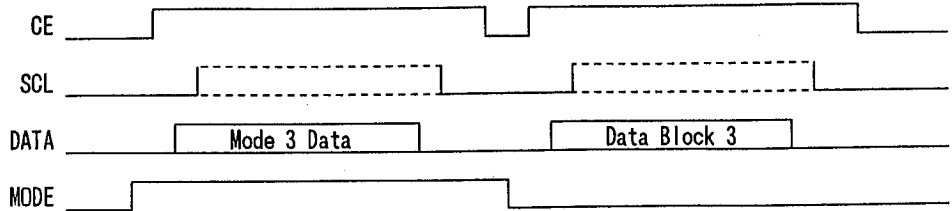
Example 1 (Mode 1): Write to Shift-register 1 (1 to 50-bit)



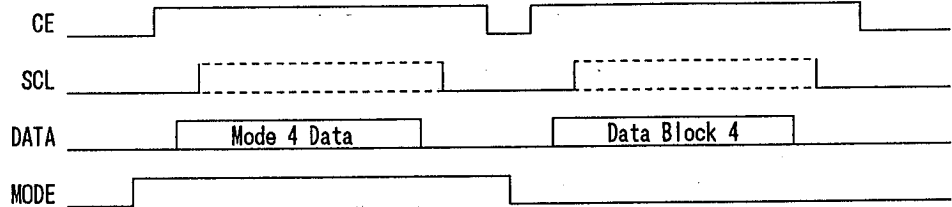
Example 2 (Mode 2): Write to Shift-register 2 (51 to 100-bit)



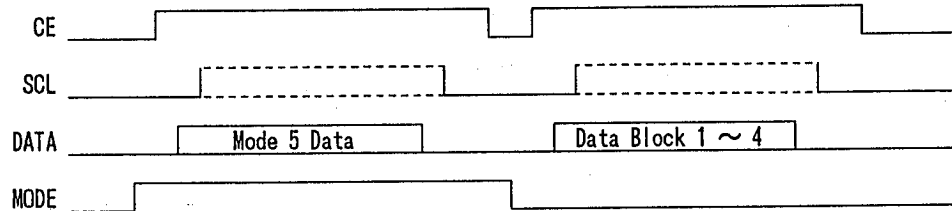
Example 3(Mode 3): Write to Shift-register 3(101 to 150-bit)



Example 4(Mode 4): Write to Shift-register 4(151 to 200-bit)



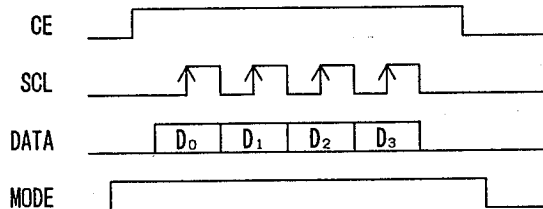
Example 5(Mode 5): Write to Shift-register 5(1 to 200-bit)



(2-3) Mode Setting

Transfer register selection and all clear of the shift register are performed by writing 4-bit code shown below to the decoder in CE = "H" and MODE = "H" state.

< Input Timing Chart >



< Mode Setting Table >

CE Terminal	MODE Terminal	DATA Terminal D ₃ D ₂ D ₁ D ₀	MODE # Data (HEX)	Mode Set Up
"H"	"H"	0 0 0 1	(01 _H)	Select the shift-register 1
		0 0 1 0	(02 _H)	Select the shift-register 2
		0 0 1 1	(03 _H)	Select the shift-register 3
		0 1 0 0	(04 _H)	Select the shift-register 4
		0 1 0 1	(05 _H)	Select the all shift-register (1 to 4)
		1 1 1 1	(0F _H)	All shift-register is "L"

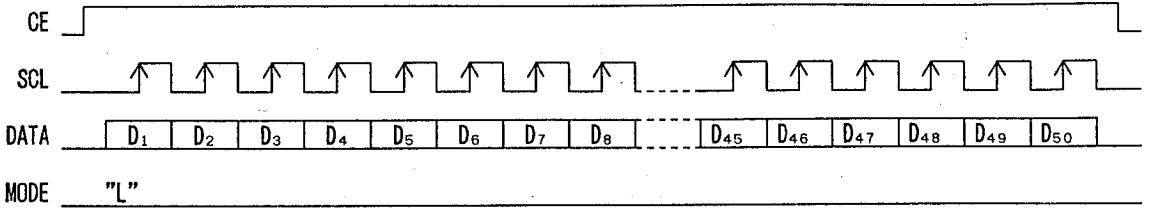
Note) The internal decoder is data through type. Therefore, the 8 bits data also can write though only 4 bits data from the CE falling are validated.

(2-4)Block Data and Whole Data transfer

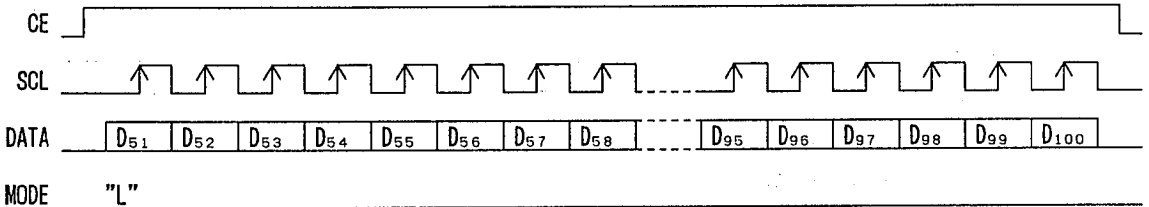
a.Block Data(50-bit) transfer

In this mode, each 50 bits data block send to the each register.

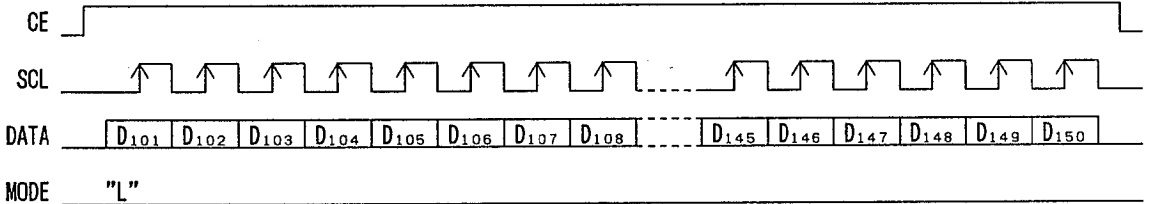
Data Block 1 : from SEG₁ of COM₁ to SEG₁₃ of COM₂



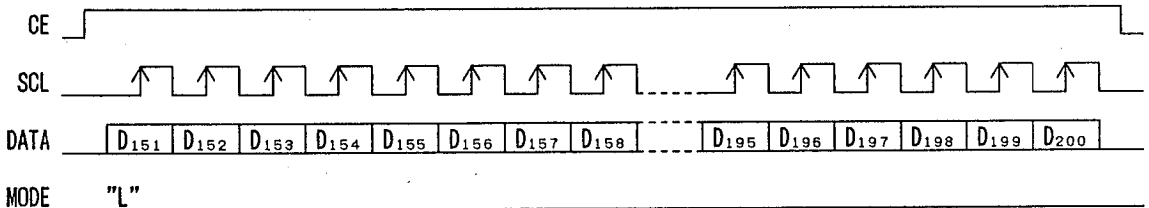
Data Block 2 : from SEG₁₃ of COM₃ to SEG₂₅ of COM₄



Data Block 3 : from SEG₂₆ of COM₁ to SEG₃₈ of COM₂

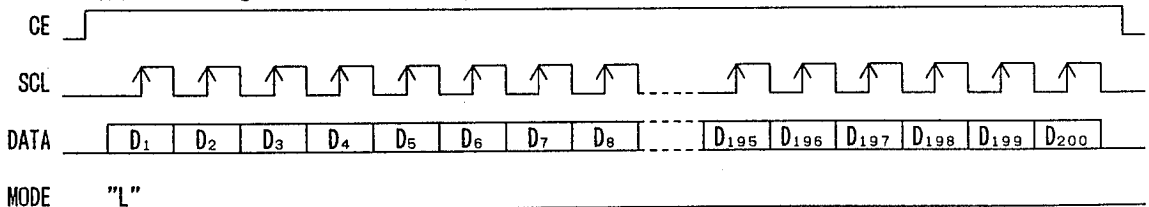


Data Block 4 : from SEG₃₈ of COM₃ to SEG₅₀ of COM₄



b.Whole Data(200-bit) transfer

from shift-register 1 to shift-register 4



5

(2-5) Display Data Correspond to Segment and Common Terminals

Mode	Data	Segment	COM ₁	COM ₂	COM ₃	COM ₄	Data Block
Mode 1	D ₁ D ₂ D ₃ D ₄	SEG ₁	○	○	○	○	Data Block 1
	D ₅ D ₆ D ₇ D ₈	SEG ₂	○	○	○	○	
	⋮	⋮	⋮	⋮	⋮	⋮	
	D ₄₅ D ₄₆ D ₄₇ D ₄₈	SEG ₁₂	○	○	○	○	
	D ₄₉ D ₅₀	SEG ₁₃	○	○			
Mode 2	D ₅₁ D ₅₂	SEG ₁₃			○	○	Data Block 2
	D ₅₃ D ₅₄ D ₅₅ D ₅₆	SEG ₁₄	○	○	○	○	
	⋮	⋮	⋮	⋮	⋮	⋮	
	D ₉₇ D ₉₈ D ₉₉ D ₁₀₀	SEG ₂₅	○	○	○	○	
Mode 3	D ₁₀₁ D ₁₀₂ D ₁₀₃ D ₁₀₄	SEG ₂₆	○	○	○	○	Data Block 3
	D ₁₀₅ D ₁₀₆ D ₁₀₇ D ₁₀₈	SEG ₂₇	○	○	○	○	
	⋮	⋮	⋮	⋮	⋮	⋮	
	D ₁₄₅ D ₁₄₆ D ₁₄₇ D ₁₄₈	SEG ₃₇	○	○	○	○	
	D ₁₄₉ D ₁₅₀	SEG ₃₈	○	○			
Mode 4	D ₁₅₁ D ₁₅₂	SEG ₃₈			○	○	Data Block 4
	D ₁₅₃ D ₁₅₄ D ₁₅₅ D ₁₅₆	SEG ₃₉	○	○	○	○	
	⋮	⋮	⋮	⋮	⋮	⋮	
	D ₁₉₇ D ₁₉₈ D ₁₉₉ D ₂₀₀	SEG ₅₀	○	○	○	○	

■ ABSOLUTE MAXIMUM RATINGS

PARAMETER	SYMBOL	RATINGS	UNIT
Operating Voltage (1)	V_{DD}	- 0.3 ~ + 7.0	V
Operating Voltage (2) Note 1)	V_{LCD}	$V_{DD} - 6.5 \sim V_{SS}$	V
Input Voltage (1) Note 2)	$V_{i(1)}$	- 0.3 ~ + 7.0	V
Input Voltage (2) Note 3)	$V_{i(2)}$	- 0.3 ~ $V_{DD}+0.3$	V
Output Voltage Note 3)	V_o	- 0.3 ~ $V_{DD}+0.3$	V
Output Current (1) Note 4)	$I_{o(1)}$	100	μA
Output Current (2) Note 5)	$I_{o(2)}$	1.0	mA
Power Dissipation	P_d	300	mW
Operating Temperature	T_{opr}	- 30 ~ + 85	$^{\circ}C$
Storage Temperature	T_{stg}	- 40 ~ + 125	$^{\circ}C$

Note 1) $|V_{DD} - V_{LCD}| \leq 1.3V_{DD}$, $V_{LCD} \leq V_{SS}$

Note 2) CE, SCL, DATA, MODE, TNH Terminals

Note 3) OSC₁, OSC₂ Terminals

Note 4) SEG₁ ~ SEG₅₀ Terminals

Note 5) COM₁ ~ COM₄ Terminals

■ ELECTRICAL CHARACTERISTICS

• DC Characteristics

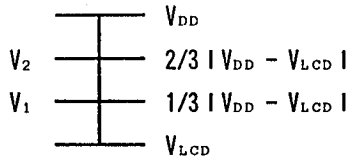
($T_a=25^{\circ}C$, $V_{DD}=5.0V$, $V_{SS}=0V$, $V_{LCD}=V_{DD}-6.5V$)

PARAMETER	SYMBOL	CONDITIONS	MIN	TYP	MAX	UNIT
Operating Voltage (1)	V_{DD}	V_{DD} Terminal	2.4		5.5	V
Operating Voltage (2)	V_{LCD}	V_{LCD} Terminal Note 6)	V_{SS}		$V_{DD}-6.5$	V
"H" Input Voltage	V_{IH}	CE, SCL, DATA, MODE,	$0.7V_{DD}$		V_{DD}	V
"L" Input Voltage	V_{IL}	TNH Terminals	V_{SS}		$0.3V_{DD}$	V
"H" Input Current	I_{IH}	CE, SCL, DATA, MODE, $V_i=V_{DD}$			5.0	μA
"L" Input Current	I_{IL}	TNH Terminals $V_i=V_{SS}$			5.0	μA
"H" Output Voltage (1)	$V_{OH(1)}$	SEG ₁ ~SEG ₅₀ $I_o=-10\mu A$	$V_{DD}-1.0$			V
"L" Output Voltage (1)	$V_{OL(1)}$	$I_o=+10\mu A$			$V_{LCD}+1.0$	V
Middle Level Voltage 1/3 (1)	$V_{MS1/3}$	SEG ₁ ~SEG ₅₀ $I_o=\pm 10\mu A$	$V_1-1.0$	V_1	$V_1+1.0$	V
Middle Level Voltage 2/3 (1)	$V_{MS2/3}$	Note 7) $I_o=\pm 10\mu A$	$V_2-1.0$	V_2	$V_2+1.0$	V
"H" Output Voltage (2)	$V_{OH(2)}$	COM ₁ ~COM ₄ $I_o=-100\mu A$	$V_{DD}-0.6$			V
"L" Output Voltage (2)	$V_{OL(2)}$	$I_o=+100\mu A$			$V_{LCD}-0.6$	V
Middle Level Voltage 1/3 (2)	$V_{MC1/3}$	COM ₁ ~COM ₄ $I_o=\pm 100\mu A$	$V_1-0.6$	V_1	$V_1+0.6$	V
Middle Level Voltage 2/3 (2)	$V_{MC2/3}$	Note 7) $I_o=\pm 100\mu A$	$V_2-0.6$	V_2	$V_2+0.6$	V
Oscillating Frequency Range	f_{osc}	OSC ₁ , OSC ₂ Terminals	25		200	kHz
Oscillating Frequency	f_{osc}	R=140k Ω	115	130	145	kHz
Operating Current (1)	I_{DD}	V_{DD} Terminal		50	80	μA
Operating Current (2)	I_{LCD}	V_{LCD} Terminal		15		μA
Hysteresis Voltage	V_H	CE, SCL, DATA, MODE, TNH Terminals	0.3			V

5

Note 6) The relation: $|V_{DD} - V_{LCD}| \leq 1.3V_{DD}$, $V_{LCD} \leq V_{SS}$ must be maintained.

Note 7) $V_1 = 1/3 |V_{DD} - V_{LCD}|$, $V_2 = 2/3 |V_{DD} - V_{LCD}|$

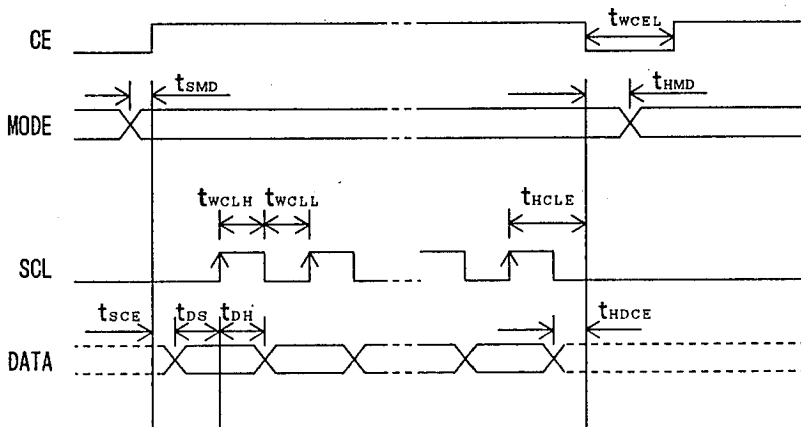


• AC Characteristics

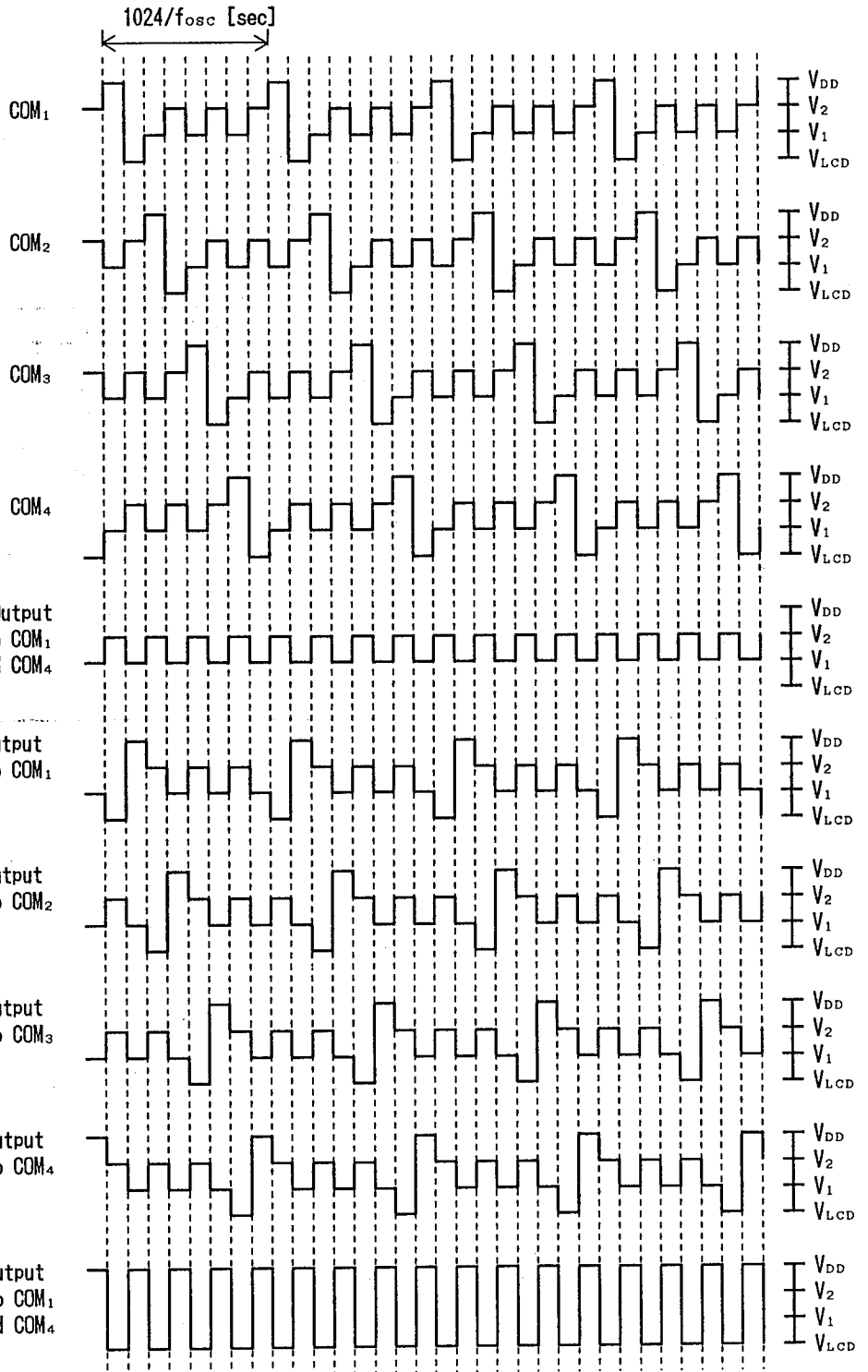
($T_a=25^\circ\text{C}$, $V_{DD}=5.0\text{V}$, $V_{SS}=0\text{V}$, $V_{LCD}=V_{DD}-6.5\text{V}$)

PARAMETER	SYMBOL	CONDITIONS	MIN	TYP	MAX	UNIT
"L" Clock Pulse Width	t_{WCLL}	SCL Terminal	0.25			μs
"H" Clock Pulse Width	t_{WCLH}		0.25			μs
Data Set-up Time	t_{DS}	SCL, DATA Terminals	0.25			μs
Data Hold Time	t_{DH}		0.25			μs
CE Set-up Time	t_{SCE}	CE, DATA Terminals	1.0			μs
CE Hold Time (1)	t_{HDCE}		1.0			μs
CE Hold Time (2)	t_{HCLE}	CE, SCL Terminals	1.25			μs
Mode Set-up Time	t_{SMD}	CE, MODE Terminals	0.25			μs
Mode Hold Time	t_{HMD}		0.25			μs
"L" Chip Enable Pulse Width	t_{WCEL}	CE Terminal	4.0			μs

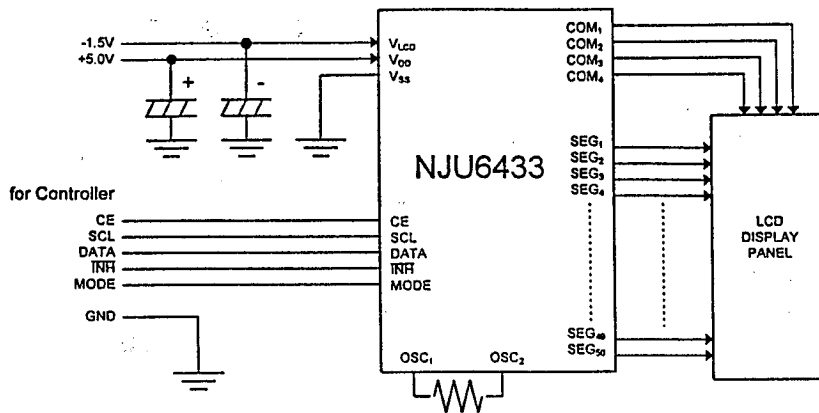
• Input Timing Characteristics



■ LCD Driving Waveform(1/4DUTY · 1/3BIAS)



5

APPLICATION CIRCUIT


(Note) The internal display data is undefined when V_{DD} is just turned on.

To avoid the meaningless display, please keep the \overline{TNH} terminal at "L" until proper display data has been transferred.

In order to set the initial condition, 200-bit blank data or the first 200-bit data to be displayed should be transferred.

MEMO

[CAUTION]

The specifications on this databook are only given for information, without any guarantee as regards either mistakes or omissions. The application circuits in this databook are described only to show representative usages of the product and not intended for the guarantee or permission of any right including the industrial rights.

SUNSTAR 商斯达实业集团是集研发、生产、工程、销售、代理经销、技术咨询、信息服务等为一体的高科技企业，是专业高科技电子产品生产厂家，是具有 10 多年历史的专业电子元器件供应商，是中国最早和最大的仓储式连锁规模经营大型综合电子零部件代理分销商之一，是一家专业代理和分销世界各大品牌 IC 芯片和电子元器件的连锁经营综合性国际公司，专业经营进口、国产名厂名牌电子元件，型号、种类齐全。在香港、北京、深圳、上海、西安、成都等全国主要电子市场设有直属分公司和产品展示展销窗口门市部专卖店及代理分销商，已在全国范围内建成强大统一的供货和代理分销网络。我们专业代理经销、开发生产电子元器件、集成电路、传感器、微波光电元器件、工控机/DOC/DOM 电子盘、专用电路、单片机开发、MCU/DSP/ARM/FPGA 软件硬件、二极管、三极管、模块等，是您可靠的一站式现货配套供应商、方案提供商、部件功能模块开发配套商。商斯达实业公司拥有庞大的资料库，有数位毕业于著名高校——有中国电子工业摇篮之称的西安电子科技大学（西军电）并长期从事国防尖端科技研究的高级工程师为您精挑细选、量身订做各种高科技电子元器件，并解决各种技术问题。

微波光电部专业代理经销高频、微波、光纤、光电元器件、组件、部件、模块、整机；电磁兼容元器件、材料、设备；微波 CAD、EDA 软件、开发测试仿真工具；微波、光纤仪器仪表。欢迎国外高科技微波、光纤厂商将优秀产品介绍到中国、共同开拓市场。长期大量现货专业批发高频、微波、卫星、光纤、电视、CATV 器件：晶振、VCO、连接器、PIN 开关、变容二极管、开关二极管、低噪晶体管、功率电阻及电容、放大器、功率管、MMIC、混频器、耦合器、功分器、振荡器、合成器、衰减器、滤波器、隔离器、环行器、移相器、调制解调器；光电子元件和组件：红外发射管、红外接收管、光电开关、光敏管、发光二极管和发光二极管组件、半导体激光二极管和激光器组件、光电探测器和光接收组件、光发射接收模块、光纤激光器和光放大器、光调制器、光开关、DWDM 用光发射和接收器件、用户接入系统光收发器件与模块、光纤连接器、光纤跳线/尾纤、光衰减器、光纤适配器、光隔离器、光耦合器、光环行器、光复用器/转换器；无线收发芯片和模组、蓝牙芯片和模组。

更多产品请看本公司产品专用销售网站：

商斯达中国传感器科技信息网：<http://www.sensor-ic.com/>

商斯达工控安防网：<http://www.pc-ps.net/>

商斯达电子元器件网：<http://www.sunstare.com/>

商斯达微波光电产品网：[HTTP://www.rfoe.net/](http://www.rfoe.net/)

商斯达消费电子产品网：<http://www.icasic.com/>

商斯达实业科技产品网：<http://www.sunstars.cn/> 微波元器件销售热线：

地址：深圳市福田区福华路福庆街鸿图大厦 1602 室

电话：0755-82884100 83397033 83396822 83398585

传真：0755-83376182 (0) 13823648918 MSN: SUNS8888@hotmail.com

邮编：518033 E-mail:szss20@163.com QQ: 195847376

深圳赛格展销部：深圳华强北路赛格电子市场 2583 号 电话：0755-83665529 25059422

技术支持：0755-83394033 13501568376

欢迎索取免费详细资料、设计指南和光盘；产品凡多，未能尽录，欢迎来电查询。

北京分公司：北京海淀区知春路 132 号中发电子大厦 3097 号

TEL: 010-81159046 82615020 13501189838 FAX: 010-62543996

上海分公司：上海市北京东路 668 号上海赛格电子市场 D125 号

TEL: 021-28311762 56703037 13701955389 FAX: 021-56703037

西安分公司：西安高新开发区 20 所(中国电子科技集团导航技术研究所)

西安劳动南路 88 号电子商城二楼 D23 号

TEL: 029-81022619 13072977981 FAX:029-88789382