

Hydrogen Sulfide

SensoriC H2S 2E 30



SensoriC H2S 2E 30

FEATURES

Amperometric 2 electrode sensor cell
fast response
high reliability
good performance at – 40°C
no sensitivity to unsat. HC, H₂, Alcohol

TYPICAL APPLICATIONS

leakage detection
portable & fixed point applications

PART NUMBER INFORMATION

MINI	0139-021-30009
SENSORIC CLASSIC	0139-021-30069
CTL4 series adaptation	0139-021-30049
CTL 7 series adaptation	0139-021-30079

SensoriC deems the data contained herein as factual, and the opinions expressed are those of qualified experts based on the results of tests conducted. The above data can not be used as a warranty provision or representation for which SensoriC assumes legal responsibility. The data are offered solely for consideration, investigation and verification. Any use of this information is subject to federal, state and local laws and regulations.



Rev. 09/2006

SensoriC H2S 2E 30

TECHNICAL SPECIFICATIONS

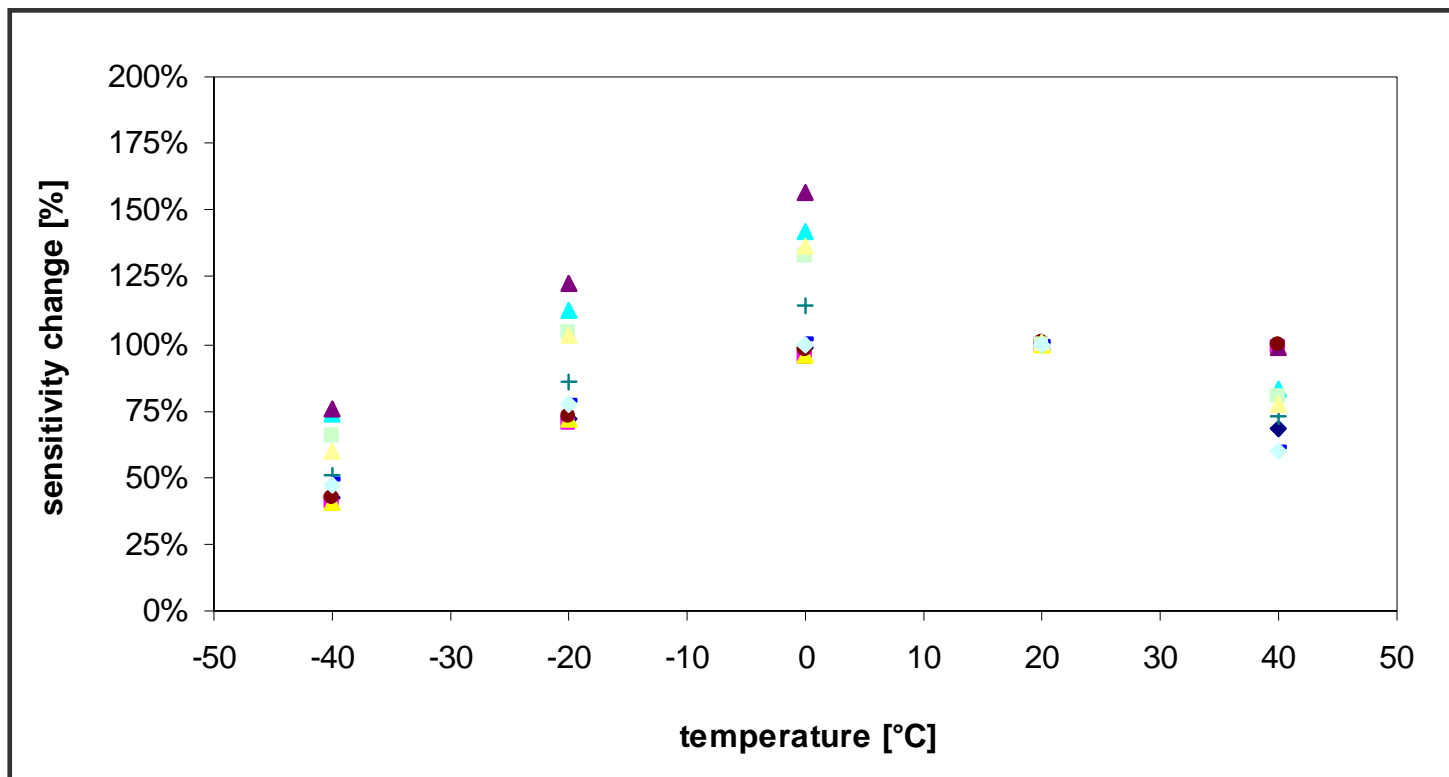
Measuring Range	0–30 ppm
Sensitivity Range	60 nA/ppm ± 30 nA/ ppm
Zero Current at 20°C	< ± 10 nA
Resolution at 20°C	< 0.2 ppm
Bias Potential	not required
Linearity	< 5% full scale
Response Time at 20°C	
t50	< 15 s calculated from 2 min. exposure time
t90	< 30 s calculated from 2 min. exposure time
Long Term Sensitivity Drift	< 10% per 6 months
Operation Conditions	
Temperature Range	-40°C to +40°C
Humidity Range	10–90% r.H., non–condensing
Effect of Humidity	no effect
Sensor Life Expectancy	> 18 months
Warranty	12 months

SensoriC deems the data contained herein as factual, and the opinions expressed are those of qualified experts based on the results of tests conducted. The above data can not be used as a warranty provision or representation for which SensoriC assumes legal responsibility. The data are offered solely for consideration, investigation and verification. Any use of this information is subject to federal, state and local laws and regulations.



SensoriC H2S 2E 30

OUTPUT vs. TEMPERATURE:



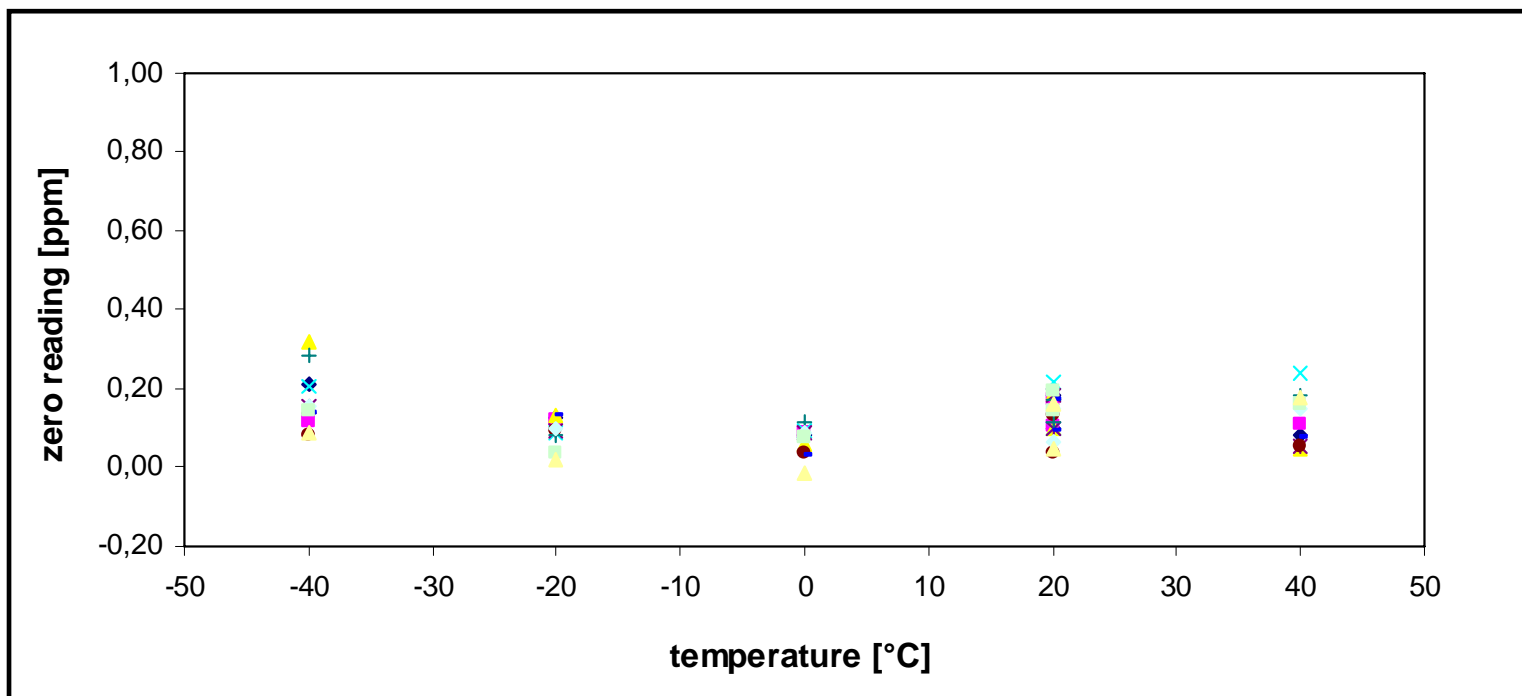
SensoriC deems the data contained herein as factual, and the opinions expressed are those of qualified experts based on the results of tests conducted. The above data can not be used as a warranty provision or representation for which SensoriC assumes legal responsibility. The data are offered solely for consideration, investigation and verification. Any use of this information is subject to federal, state and local laws and regulations.



Rev. 09/2006

SensoriC H2S 2E 30

ZERO READING vs. TEMPERATURE:



SensoriC deems the data contained herein as factual, and the opinions expressed are those of qualified experts based on the results of tests conducted. The above data can not be used as a warranty provision or representation for which SensoriC assumes legal responsibility. The data are offered solely for consideration, investigation and verification. Any use of this information is subject to federal, state and local laws and regulations.



Rev. 09/2006

SensoriC H2S 2E 30

CROSS SENSITIVITIES AT 20°C

Gas	Concentration	Reading [ppm]
Ammonia	100 ppm	0.1
Arsine	0.2 ppm	0
Carbon Dioxide	5000 ppm	0
Carbon Monoxide	100 ppm	0
Chlorine	1 ppm	0
Chlorine Hydrocarbons	<200 ppm	0
unsat. Hydrocarbons	% range	0
Hydrogen	10000 ppm	0
Hydrogen Cyanide	20 ppm	9
Methane	100 %	0
Nitric Oxide	100 ppm	0
Nitrogen Dioxide	10 ppm	- 5
Sulfur Dioxide	20 ppm	2

Notes:

1. Interference factors may differ from sensor to sensor and with life time. It is not advisable to calibrate with interference gases.
2. This table does not claim to be complete. The sensor might also be sensitive to other gases.

SensoriC deems the data contained herein as factual, and the opinions expressed are those of qualified experts based on the results of tests conducted. The above data can not be used as a warranty provision or representation for which SensoriC assumes legal responsibility. The data are offered solely for consideration, investigation and verification. Any use of this information is subject to federal, state and local laws and regulations.



Rev. 09/2006