

Connecting USB boards to an USB port (for Windows XP and up).

The Smartec evaluation boards SMTAS04USB and TOOLKITUSB are equipped with an interface chip that converts the RS232 code into an USB signal. For that purpose a special USB interface driver has to be installed on the users PC. This driver can be found on the internet at the www of the interface chip supplier: <http://www.ftdichip.com/Drivers/FT232-T245/VCP/Win/R9052154.zip>

<http://www.ftdichip.com/FTDrivers.htm> (chip used = FT232, file R9052154).

Take the following steps to install:

- Download the driver from the FTDI website and save it in for example: My documents/FTdriver.
- Connect the SMTAS04 or UTIttoolKITUSB.
- Windows will ask for a new driver, which can be found at the location where you just saved it.
- The next time you connect an USB board that needs a FTDI driver Windows will remember the location of the driver.

You need to know to which COM port the USB port is connected, before you can choose the corresponding COM port in your Smartec software.

Take the following steps to detect the COM-port:

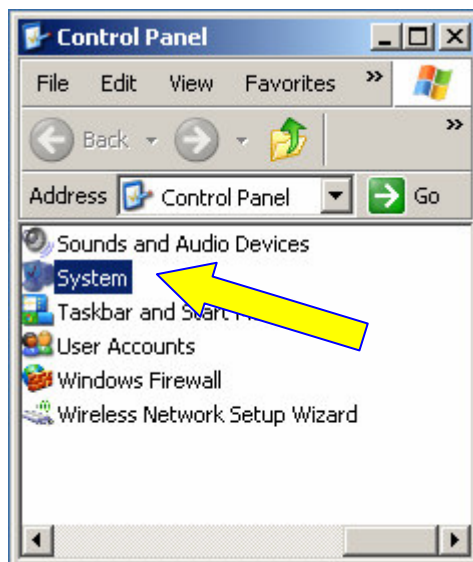


Connecting Smartec USB boards to PC

reference
usb to pc

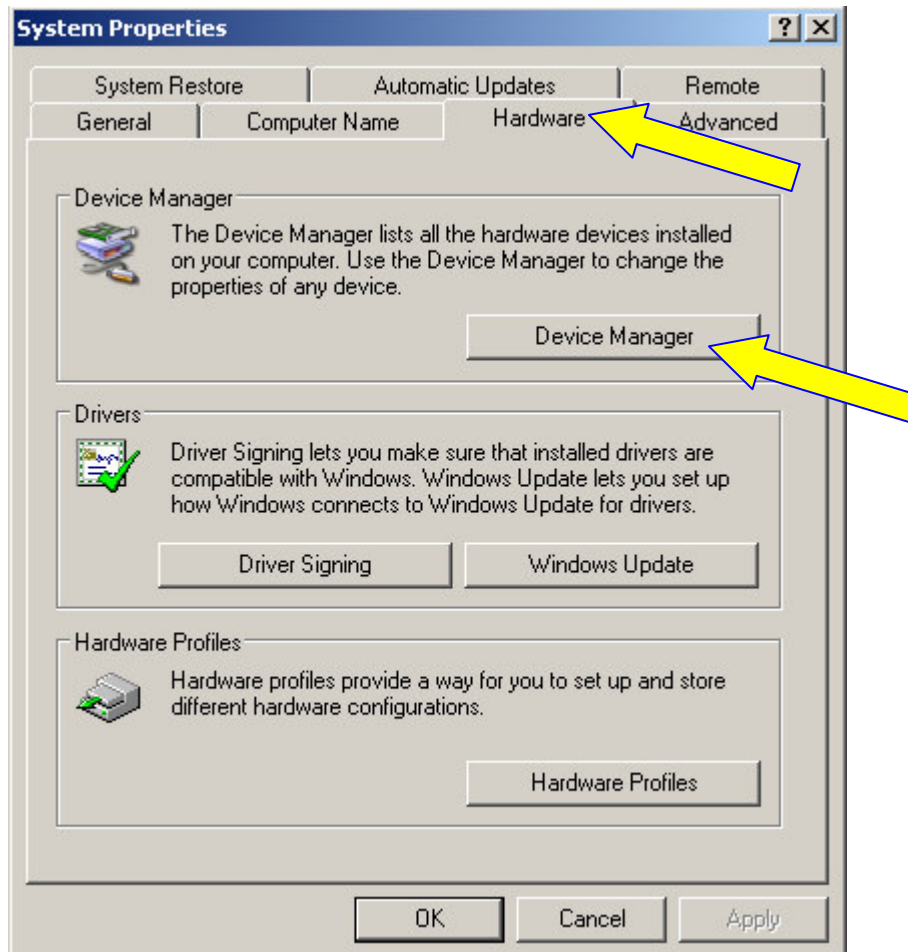
page
2/5

Go to **Start** Control Panel and Select **SYSTEM**

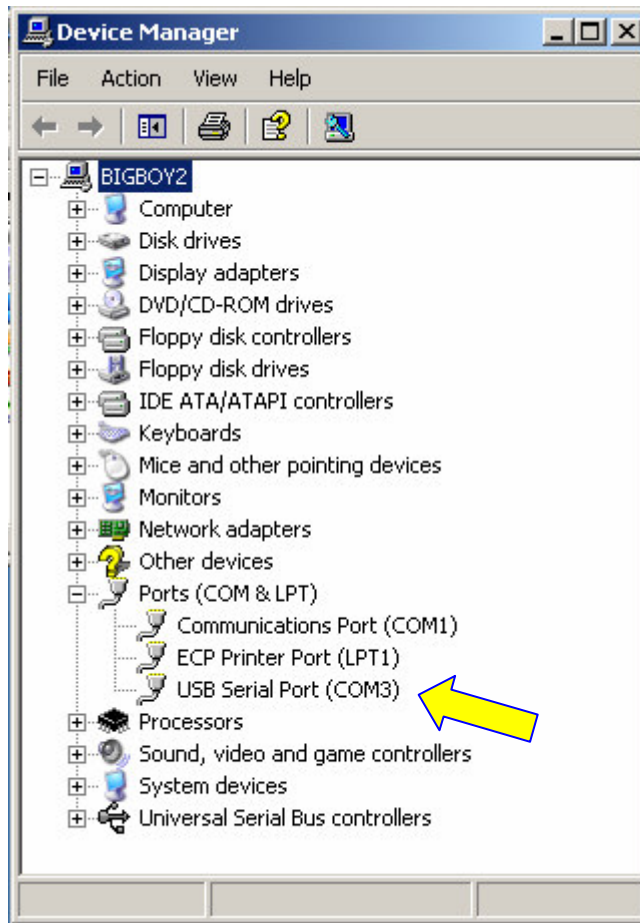


Connecting Smartec USB boards to PC

Select the Hardware Tab, click Device Manager and open the PORTS item (click the "+")



Connecting Smartec USB boards to PC



You can see that (in this example) the USB port is connected to the COM3 port. When you remove the USB board, this item will be removed from this list by Windows. Remember to have a look here, if your USB board does not respond. Multiple USB boards will be connected to different COM ports. The COMport has to be selected when using our labview applications (see **Supportshop** on our [WWW.smartec.nl](http://www.smartec.nl))



Connecting Smartec USB boards to PC

reference
usb to pc

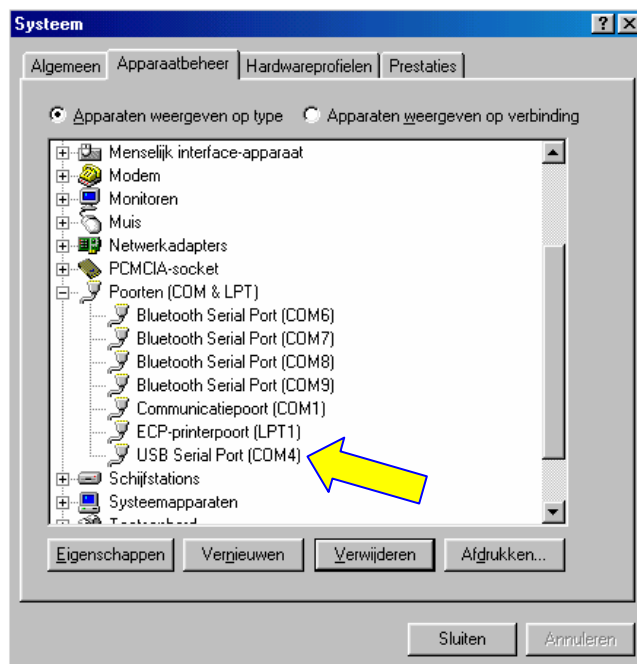
page
5/5

Connecting USB boards to an USB port (for Windows 98)

For **windows 98** user the procedure of downloading the USB driver is basically the same.
In order to find out, however, to which COM port the USB port has been assigned, do the following:
Right mouse click on **My Computer** (on Desktop)

Left click **Properties**

Select the **Device Manager** tab



You can see that (in this example) the USB port is connected to the COM4 port. When you remove the USB board, this item will be removed from this list by Windows. Remember to have a look here, if your USB board does not respond. Multiple USB boards will be connected to different COM ports. The COMport has to be selected when using the Smartecs labview applications (see **Supportshop** on our [WWW.smartec.nl](http://www.smartec.nl))

For other Windows versions (2000/SE/NT) the procedure above is similar. Check FTDI website for further details. The correct function of the software cannot be guaranteed when using older versions of Windows.

