

BELLOWS PRESSURE SENSORS

FOR PRESSURE SWITCH



HAUPTMERKMALE

- ◆ Fühler: Balg
- ◆ Messbereich:
Druck: -0.9...1.5 bis 10...100 bar
Druckdifferenz: -0.6...3.4 bis 1...16 bar
- ◆ Anwendung: Druckschalter

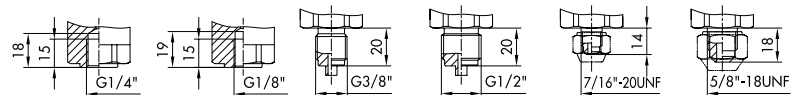
CARACTÈRES DISTINCTIFS

- ◆ Capteur: soufflet
- ◆ Plage de mesure
Pression: -0.9...1.5 à 10...100 bar
Press. différentielle: -0.6...3.4 à 1...16 bar
- ◆ Application: Interrupteur à pression

MAIN CHARACTERISTICS

- ◆ Sensor: bellows
- ◆ Measuring range
Pressure: -0.9...1.5 bis 10...100 bar
Differential pressure: -0.6...3.4 to 1...16 bar
- ◆ Application: Pressure switch

**FÜR DRUCKSCHALTER / POUR INTERRUPTEUR À PRESSION / FOR PRESSURE SWITCH:
900, 901, 902, 903, 904, 905, 906, 907, 912, 915, 940, 941, 942**



Bereich Plage Range [bar]	Überdruck Surpression Overpressure [bar]			A	B	C	G1/4"		G1/8"	G3/8"	G1/2"	7/16"-20UNF	5/8"-18UNF
							innen femelle female	innen femelle female	aussen mâle male	aussen mâle male	aussen mâle male	aussen mâle male	
72	-0.9...	1.5	10	A	B	C	900 ¹⁾			910	909		
							950 ¹⁾				959		
							800 ¹⁾				809		
73	0.2...	1.6	10	A	B	C	901 ¹⁾	921 ¹⁾		922 ¹⁾	902 ¹⁾	911 ¹⁾	912 ¹⁾
75	0.2...	2.5	10	A	B	C	951 ¹⁾				952 ¹⁾	961 ¹⁾	
							801 ¹⁾				802		
76	0.0...	4.0	12	A	B	C	903 ¹⁾	923 ¹⁾		924 ¹⁾	904 ¹⁾	913 ¹⁾	914 ¹⁾
77	0.0...	6.0	12	A	B	C	953 ¹⁾	973 ¹⁾		974 ¹⁾	954 ¹⁾	963 ¹⁾	964 ¹⁾
							803 ¹⁾	823 ¹⁾			804		
78	1.0...	10.0	24	A	B	C	905 ¹⁾	925 ¹⁾		926 ¹⁾	906 ¹⁾	915 ¹⁾	916 ¹⁾
79	1.0...	16.0	24	A	B	C	955 ¹⁾	975 ¹⁾		976 ¹⁾	956 ¹⁾	965 ¹⁾	966 ¹⁾
							805 ¹⁾				806		
80	2.0...	25.0	40	A	B	C	907 ¹⁾	927 ¹⁾		928 ¹⁾	908 ¹⁾	917 ¹⁾	918 ¹⁾
81	4.0...	40.0	40	A	B	C	957 ¹⁾	977 ¹⁾		978 ¹⁾	958 ¹⁾	967 ¹⁾	968 ¹⁾
							807 ¹⁾				808		
82	6.0...	60.0	100			C					940		
83	10.0...	100.0	100			C					840		
												941	
												841	

A Balg: Bronze
Gehäuse: Messing

Soufflet: bronze
Boîtier: laiton

Bellows: bronze
Housing: brass

B Balg: Bronze
Gehäuse: Messing chem. vern.

Soufflet: bronze
Boîtier: laiton chim. nickelé

Bellows: bronze
Housing: brass chem. nickel plat.

C Balg: 1.4435
Medienberührende Teile: 1.4435
Gehäuse: MS vernickelt

Soufflet: 1.4435
Matériel contact. avec médias: 1.4435
Boîtier: laiton nickelé

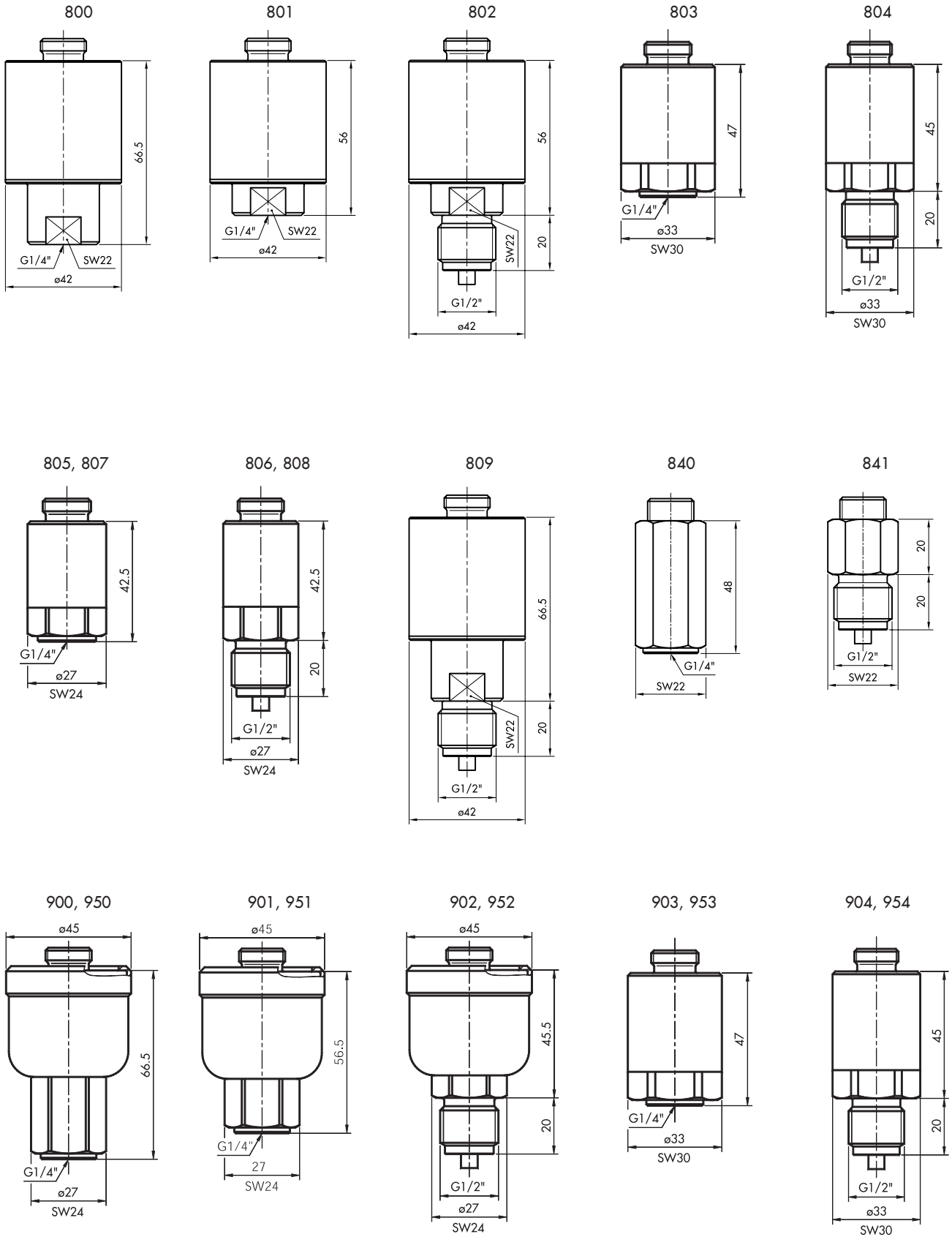
Bellows: 1.4435
Medium contact. parts: 1.4435
Housing: brass, nickel plat.

¹⁾ Kann „für Sauerstoffanwendungen gereinigt“ hergestellt werden, mit Zubehör **XXX.93**
On peut fabriquer „nettoyé pour applications avec l'oxygène“, avec accessoires **XXX.93**
Can be manufactured „cleaned for oxygen applications“, with accessories **XXX.93**

K]bbYf'5i tca UHjW9ei Jda Ybh7C "z4B " "Tel +, * +) , *%+(\$+\$, Fax +, * +) , *%+(\$+\$, www.k b!Ui t.com

ÄNDERUNGEN VORBEHALTEN - SOUS RÉSERVE DE MODIFICATIONS - SUBJECT TO CHANGE

MASSBILDER / COTES D'ENCOMBREMENT / DIMENSIONS

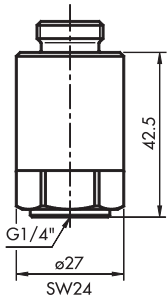


K jbbYf'5i lca UjW9ei Jda Ybh7C "z4B Tel +, * +), *%+(\$+\$, Fax +, * +), *%+(\$+\$, www.k b!Ui ltc.com

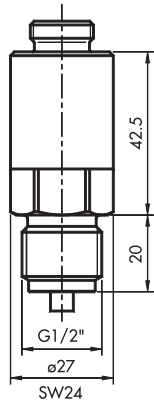
ÄNDERUNGEN VORBEHALTEN - SOUS RÉSERVE DE MODIFICATIONS - SUBJECT TO CHANGE

MASSBILDER / COTES D'ENCOMBREMENT / DIMENSIONS

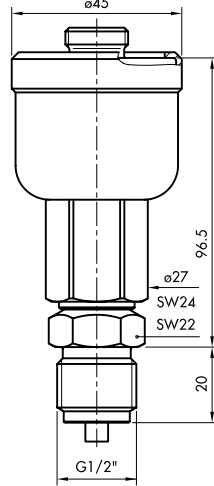
905, 907, 955, 957



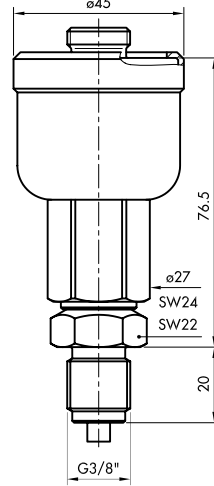
906, 908, 956, 958



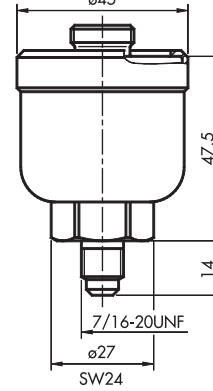
909, 959



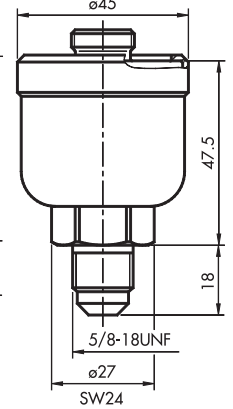
910, 960



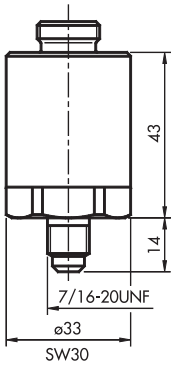
911, 961



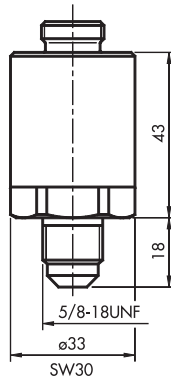
912, 962



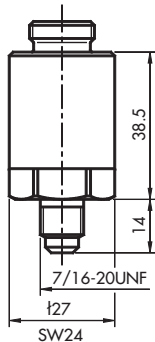
913, 963



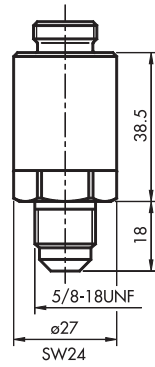
914, 964



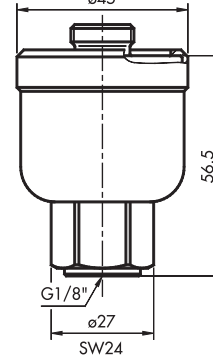
915, 917, 965, 967



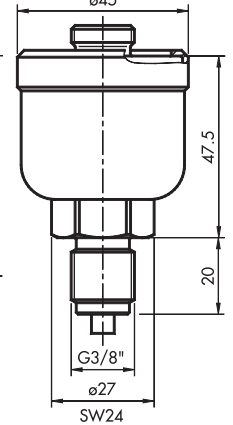
916, 918, 966, 968



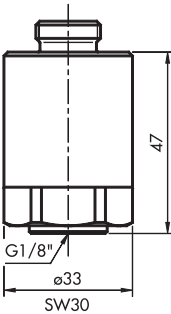
921, 971



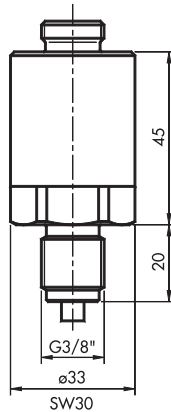
922, 972



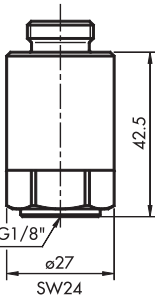
923



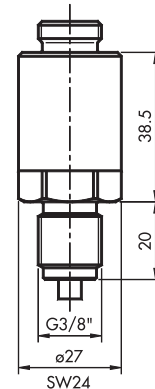
924



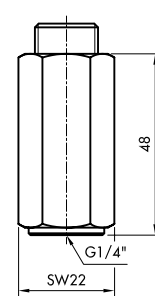
925, 927, 975, 977



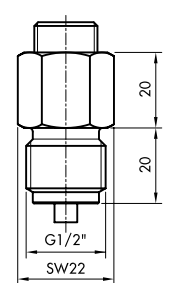
926, 928, 976, 978



940



941



K jbbYf'5i lca UHjW9ei Jda Ybh7C "z4B Tel +, * +) , *%+(\$+\$, Fax +, * +) , *%+(\$+\$, www.k b!Ui ltc.com

ÄNDERUNGEN VORBEHALTEN - SOUS RÉSERVE DE MODIFICATIONS - SUBJECT TO CHANGE

FÜR EX DRUCKSCHALTER / POUR INTERRUPTEUR À PRESSION EX / FOR EX PRESSURE SWITCH: 900, 904, 912

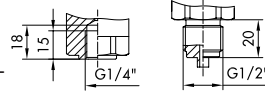


**Bereich
Plage
Range [bar]**

**Überdruck
Surpression
Overpressure [bar]**

Belg und medienberührende
Teile: 1.4435
Gehäuse: MS vernickelt
Soufflet et matériel contact.
avec médias: 1.4435
Boîtier: laiton nickelé

Bellocs and medium contact.
parts: 1.4435
Housing: brass, nickel plat.



G1/4"

innen
femelle
female

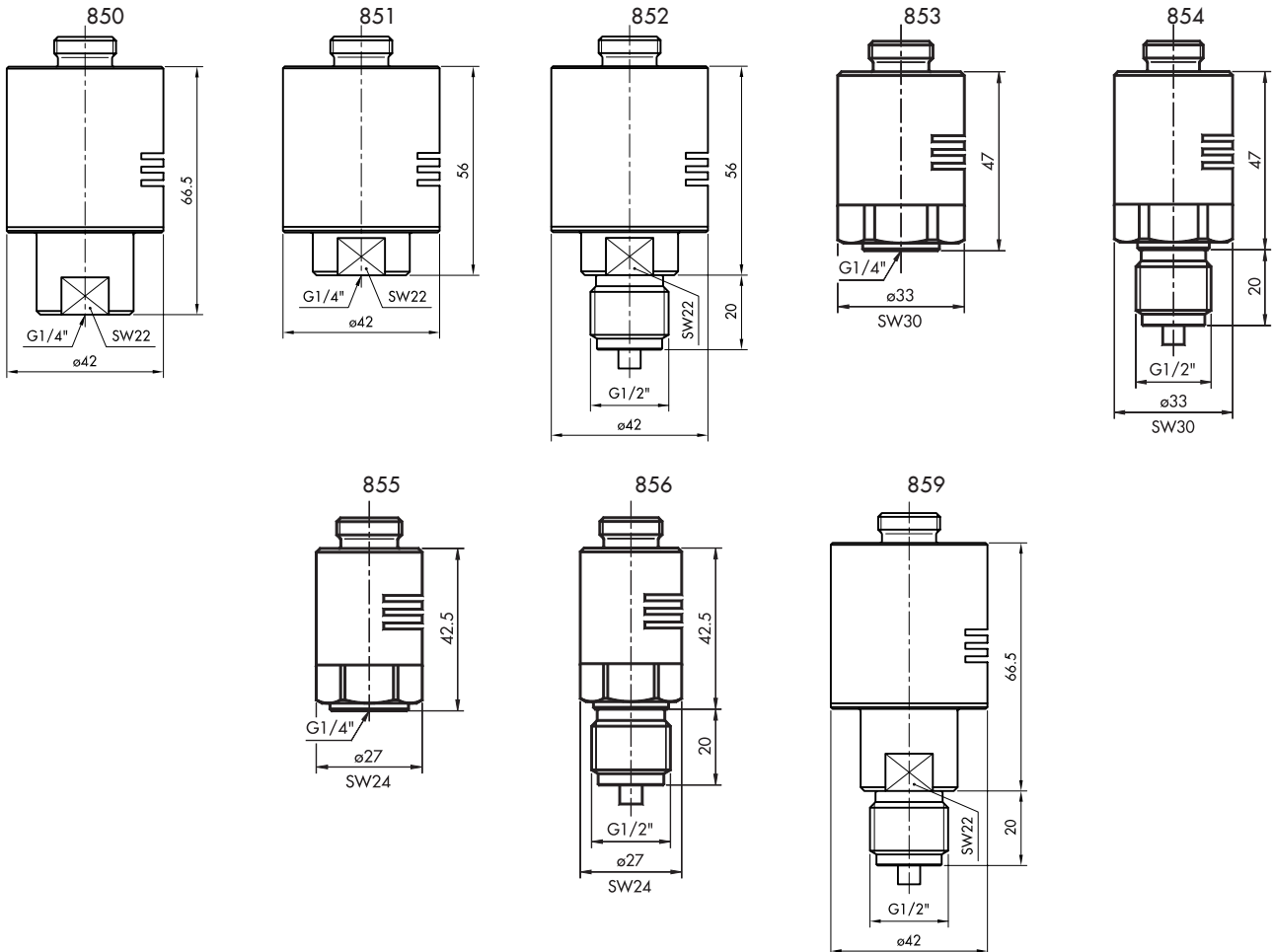
G1/2"

aussen
mâle
male

72	-0.9...	1.5	10	•	850¹⁾	859
73	0.2...	1.6	10	•	851¹⁾	852
75	0.2...	2.5	10	•	851¹⁾	852
76	0.0...	4.0	12	•	853¹⁾	854
77	0.0...	6.0	12	•	853¹⁾	854
78	1.0...	10.0	24	•	855¹⁾	856
79	1.0...	16.0	24	•	855¹⁾	856
80	2.0...	25.0	40	•	857¹⁾	858
81	4.0...	40.0	40	•	857¹⁾	858

¹⁾ Kann „für Sauerstoffanwendungen gereinigt“ hergestellt werden, mit Zubehör **XXX.93**
On peut fabriquer „nettoyer pour applications avec l'oxygène“, avec accessoires **XXX.93**
Can be manufactured „cleaned for oxygen applications“, with accessories **XXX.93**

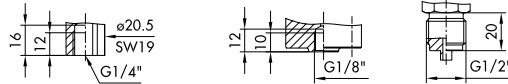
MASSBILDER / COTES D'ENCOMBREMENT / DIMENSIONS



K [bbYf'5i lca UH]W9ei Jda Ybh7C "z4B Tel +, * +), *%+(\$+\$, Fax +, * +), *%+(\$+\$, www.k b!Ui ltc.com

ÄNDERUNGEN VORBEHALTEN - SOUS RÉSERVE DE MODIFICATIONS - SUBJECT TO CHANGE

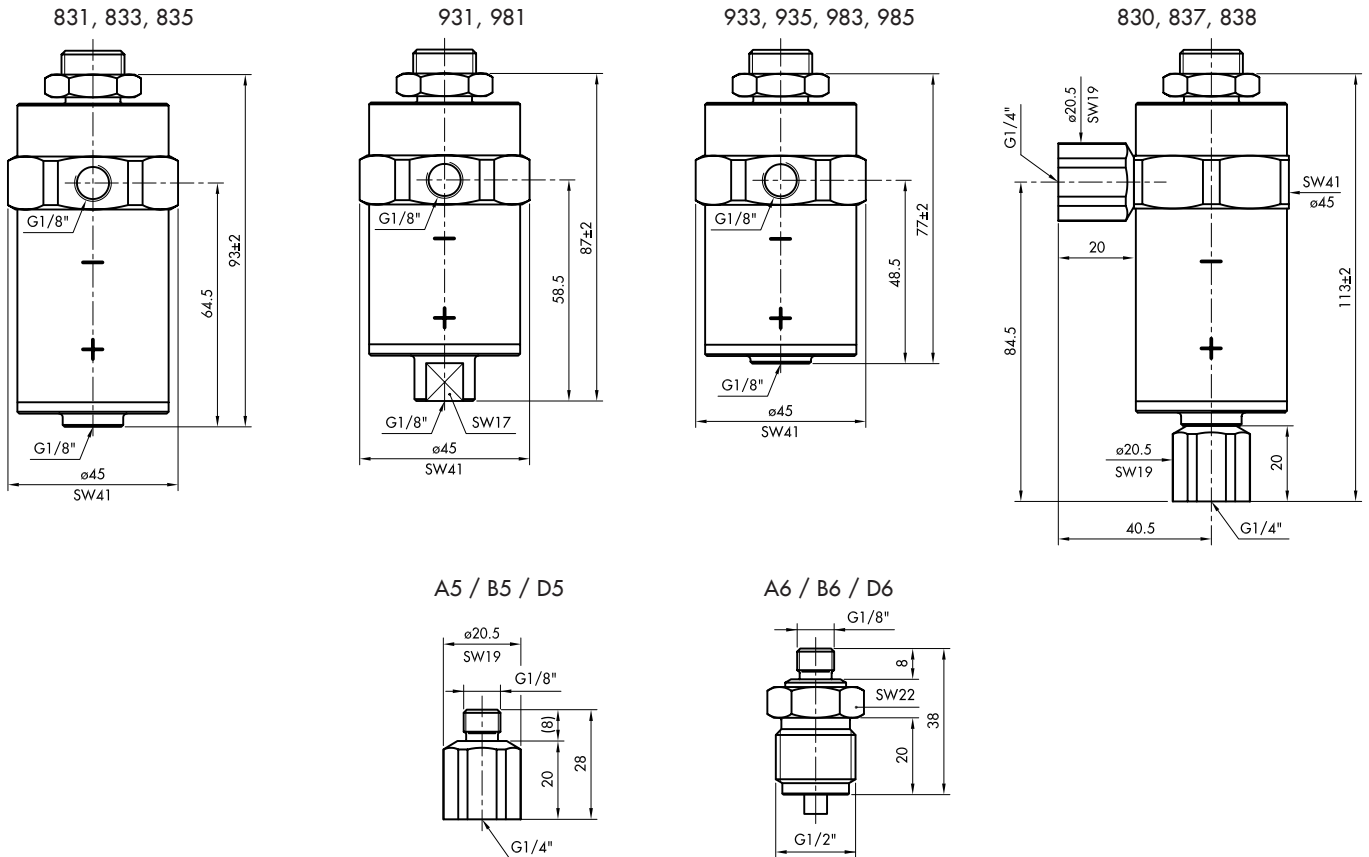
**FÜR DIFFERENZDRUCKSCHALTER / POUR INTERRUPTEUR À PRESSION DIFFÉRENTIELLE /
FOR DIFFERENTIAL PRESSURE SWITCH: 920, 924, 932**



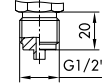
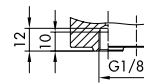
Bereich Plage Range [bar]	Überdruck Surpression Overpressure [bar]					G1/4"	G1/8"	G1/2"
						innen femelle female	innen femelle female	cussen mâle male
74	-0.6... 3.4	10	A			930 (931+2x A5)	931	932 (931+2x A6)
			B			980 (981+2x B5)	981	982 (981+2x B6)
			C			830 (831+2x D5)	831	832 (831+2x D6)
76	0.0... 4.0	12	A			937 (833+2x A5)	933	934 (933+2x A6)
			B			987 (953+2x B5)	983	984 (983+2x B6)
77	0.0... 6.0	12	C			837 (833+2x D5)	833	834 (833+2x D6)
			A			938 (935+2x A5)	935	936 (935+2x A6)
			B			988 (985+2x B5)	985	986 (985+2x B6)
79	1.0... 16.0	24	C			838 (835+2x D5)	835	836 (835+2x D6)

- A** Balg: Bronze
Gehäuse: Messing
Soufflet: bronze
Boîtier: laiton
Bellows: bronze
Housing: brass
- B** Balg: Bronze
Gehäuse: Messing chem. vern.
Soufflet: bronze
Boîtier: laiton chim. nickelé
Bellows: bronze
Housing: brass chem. nickel plat.
- C** Balg: 1.4435
Medienberührende Teile: 1.4435
Gehäuse: MS vernickelt
Soufflet: 1.4435
Matériel contact. avec médias: 1.4435
Boîtier: laiton nickelé
Bellows: 1.4435
Medium contact. parts: 1.4435
Housing: brass, nickel plat.

MASSBILDER / COTES D'ENCOMBREMENT / DIMENSIONS



**FÜR EX DIFFERENZDRUCKSCHALTER / POUR INTERRUPTEUR À PRESSION DIFFÉRENTIELLE EX /
FOR EX DIFFERENTIAL PRESSURE SWITCH: 920, 924, 932**



Nenndruck Plage Range [bar]	Überdruck Surpression Overpressure [bar]		G1/4"			G1/8"		G1/2"	
			A	B	C	innen femelle female	innen femelle female	ausen mâle male	
72	-0.6... 3.4	10	A	B	C	942 + 2x A5 992 + 2x B5 881 + 2x D5	942 992 881	942 + 2x A6 992 + 2x B6 881 + 2x D6	
76	0.0... 4.0	12	A	B	C	943 + 2x A5 993 + 2x B5 883 + 2x D5	943 993 883	943 + 2x A6 993 + 2x B6 883 + 2x D6	
77	0.0... 6.0	12							
78	1.0... 10.0	24	A	B	C	944 + 2x A5 994 + 2x B5 885 + 2x D5	944 994 885	944 + 2x A6 994 + 2x B6 885 + 2x D6	
79	1.0... 16.0	24							

A Balg: Bronze
Gehäuse: Messing

Soufflet: bronze
Boîtier: laiton

Bellows: bronze
Housing: brass

B Balg: Bronze
Gehäuse: Messing chem. vern.

Soufflet: bronze
Boîtier: laiton chim. nickelé

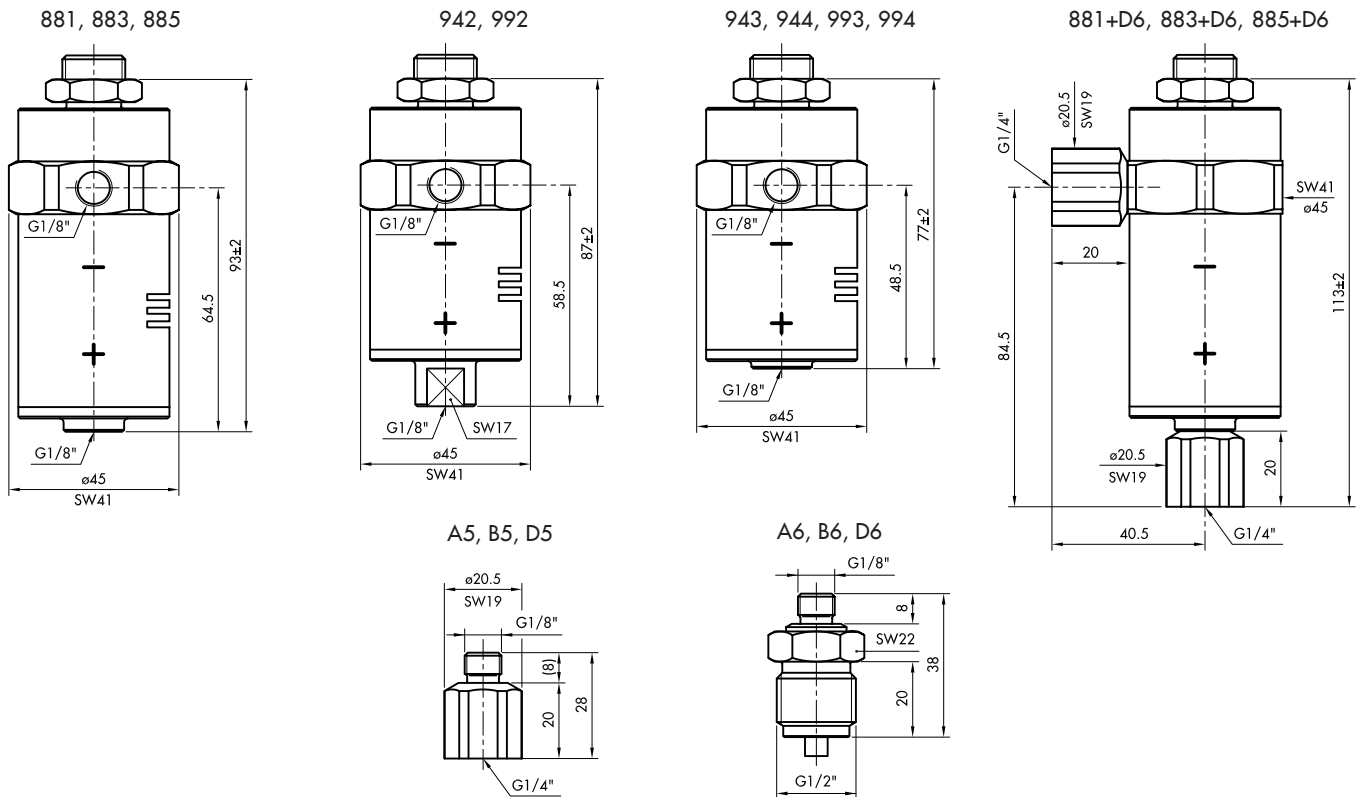
Bellows: bronze
Housing: brass chem. nickel plat.

C Balg: 1.4435
Medienberührende Teile: 1.4435
Gehäuse: MS vernickelt

Soufflet: 1.4435
Matériel contact. avec médias: 1.4435
Boîtier: laiton nickelé

Bellows: 1.4435
Medium contact. parts: 1.4435
Housing: brass, nickel plat.

MASSBILDER / COTES D'ENCOMBREMENT / DIMENSIONS



i Trafag entwickelt und produziert auch speziell auf Ihre Bedürfnisse zugeschnittene Produkte. Bitte fragen Sie uns an.
Trafag développe et fabrique des produits adaptés à vos besoins spécifiques en se basant sur votre cahier des charges. Contactez-nous s.v.p.
Trafag develops and manufactures customer-engineered products according to your specifications to meet your requirements. Please contact us.

Kontaktieren Sie uns unter: Tel + () , *+ (\$ + \$, Fax + () , *+ (\$ + \$, www.kb!Ui tr.com

ÄNDERUNGEN VORBEHALTEN - SOUS RÉSERVE DE MODIFICATIONS - SUBJECT TO CHANGE