

Multimode Relay MT

2 / 3 pole 10 A, DC- or AC-coil



- 2 C/O or 3 C/O contacts
- Cadmium-free contacts
- DC and AC coils
- Mechanical indicator as standard
- Electrical indicator
- New test system with front operated finger protected push-to-test button and integral locking test tab
- White write on panel

Applications
Mechanical engineering, plant control



Technical data of approved types on request

Contact data

Configuration	2 C/O contact or 3 C/O contact	
Type of contact	single contacts	bifurcated contacts
Rated current	10 A	4 A
Rated voltage / max.breaking voltage AC	250 Vac / 440 Vac	
Maximum breaking capacity AC	2500 VA	500 VA
Make current (max. 4 s at duty cycle 10%)	20 A	8 A
Contact material	AgNi 90/10	
Minimum contact load	24 V, 10 mA / 20 mV, 1 mA gold plated	

Contact life

Type	Load	Operations	Standard
MT321	10 A, 250 Vac, C/O contact	1x10 ⁵	VDE 0435

Coil data

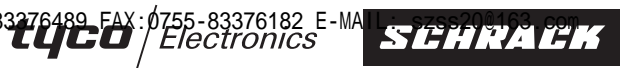
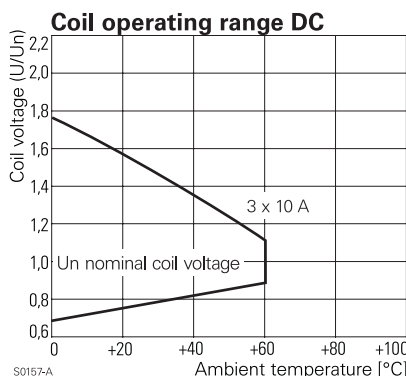
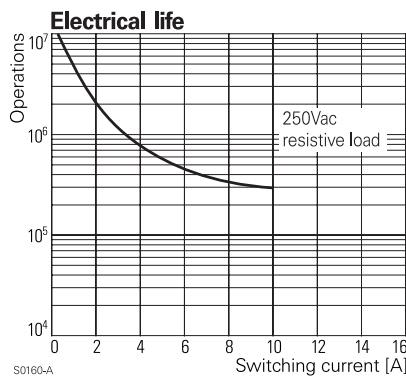
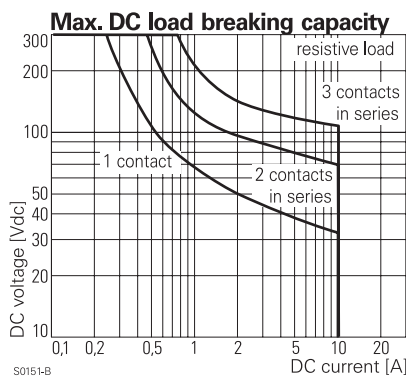
Nominal voltage	DC coil	6...220 Vdc
	AC coil	6...230 Vac
Nominal coil power	DC coil	typ. 1.2 W
	AC coil	typ. 2.3 VA
Operate category	1 / a	

Coil versions, DC-coil

Coil code standard	PD*	Nominal voltage Vdc	Pull-in voltage Vdc	Release voltage Vdc	Coil resistance Ω	Coil current mA
006	0A6	6	4.5	0.6	32±10%	187.5
012	0B2	12	9.0	1.2	110±10%	109.1
024	0C4	24	18.0	2.4	475±10%	50.5
048	0E8	48	36.0	4.8	2000±10%	24.0
060	0G0	60	45.0	6.0	2850±10%	21.1
110	1B0	110	82.5	11.5	10000±12%	11.0
220	2C0	220	165.0	22.0	40000±15%	5.5

All figures are given for coil without preenergization, at ambient temperature +20°C

* Protection diode PD; standard polarity: 2-pole relays: +2 / -7, 3-pole relays: +2 / -10



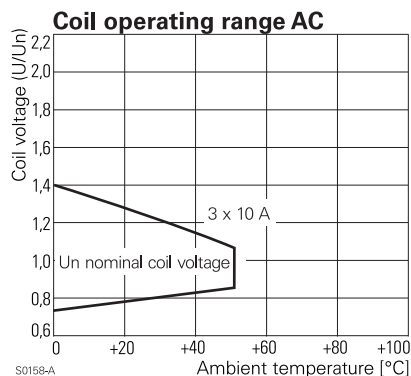
Multimode Relay MT

2 / 3 pole 10 A, DC- or AC-coil

Coil versions, AC-coil

Coil code	Nominal voltage Vac	Pull-in voltage Vac	Release voltage Vac	Maximum voltage Vac	Coil resistance Ω	Coil current mA
006	6	4.8	2.4	7.8	$5.3 \pm 10\%$	381.7
012	12	9.6	4.8	15.6	$24 \pm 10\%$	182.5
024	24	19.2	9.6	31.2	$86 \pm 10\%$	94.2
048	48	38.4	19.2	62.4	$345 \pm 10\%$	47.5
060	60	48.0	24.0	78.0	$544 \pm 10\%$	37.8
115	115	92.0	46.0	149.5	$2000 \pm 10\%$	20.6
230	230	184.0	92.0	299.0	$8300 \pm 12\%$	10.1

All figures are given for coil without preenergization, at ambient temperature +20°C



Insulation

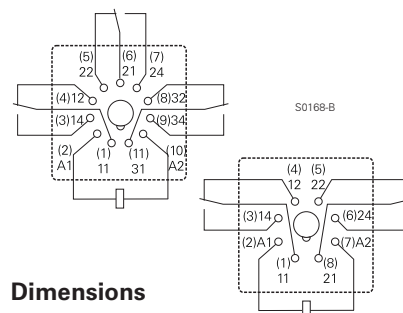
Dielectric strength	coil-contacts	2500 V_{rms}
	open contact circuit	1500 V_{rms}
	adjacent contacts	2500 V_{rms}
Clearance / creepage		2.8 / 4 mm
Insulation to IEC 664/VDE 0110 (1/89)		
	Voltage rating	250 V
	Pollution degree	3
	Overvoltage category	III
Insulation to VDE 0110b (2/79)		C / 250
Tracking resistance of relay base		CTI 175

Other data

Flammability class UL		V-0
Ambient temperature	DC-coil	-45...+60 °C
	AC-coil	-45...+50 °C
Mechanical life		>20x10 ⁶ operations
Max. switching rate at rated- / minimum load		20 min ⁻¹ / 100 min ⁻¹
Operate- / release time		12 / 5 ms
Bounce time		4 ms
Vibration resistance N/O / N/C contact		>5 / 2 g
Shock resistance (function) N/O / N/C		>50 / 10 g
Protection category		IP 50
Relay weight		80 g
Packaging unit		25 pcs.
Accessories		see accessories MT

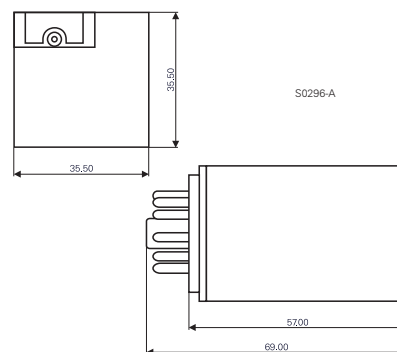
Terminal assignment

View on solder pins



Dimensions

Dimensions in mm



Ordering key

Type	M	T				
Contact configuration	2 2 C/O contacts, 8-pole	3 3 C/O contacts, 11-pole				
Contact material	2 AgNi 90/10	B AgNi 90/10, bifurcated contacts, gold plated				
	3 AgNi 90/10, gold plated					
Version	1 DC with test button	6 AC with test button				
	3 DC with test button and LED	8 AC with test button and LED				
Coil	Coil code: please refer to coil versions table, preferred types in bold print					
Other types on request						

Rights to change data / design reserved