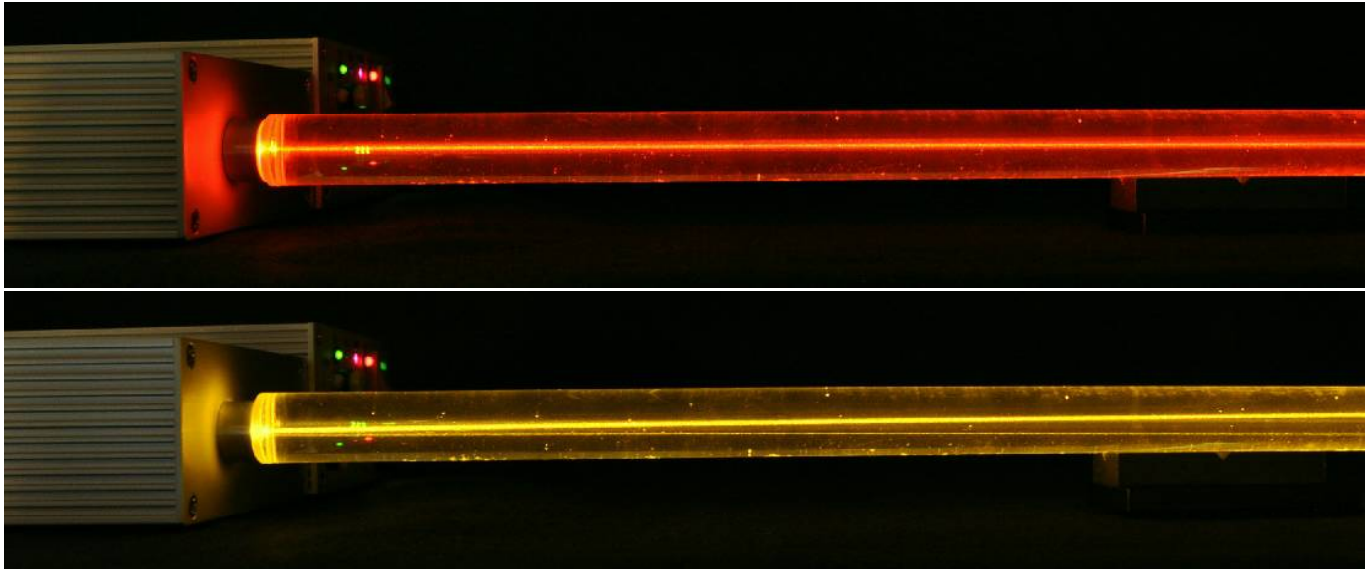




YELLOW 580nm & ORANGE 605nm LASER Vivid like the Sunrise Collor!

Have you ever found a Laser like this? If not, you are lucky now!

ORANGE model: ORO-020 YELLOW model: OYO-010



Laser Power ⇒ 1~40mW

More Power available! on your request.

Compact! Wide Usage!!

Reasonable Price !!!

Unit Size : Width 112 x Height 44 x Length 200mm

Application:

hemoglobin or protein`s mass analization、

Light source for fluorescence microscope and

other medical or chemical applications, Optics experiment, Beam for Entertainments、

Or for your next research?

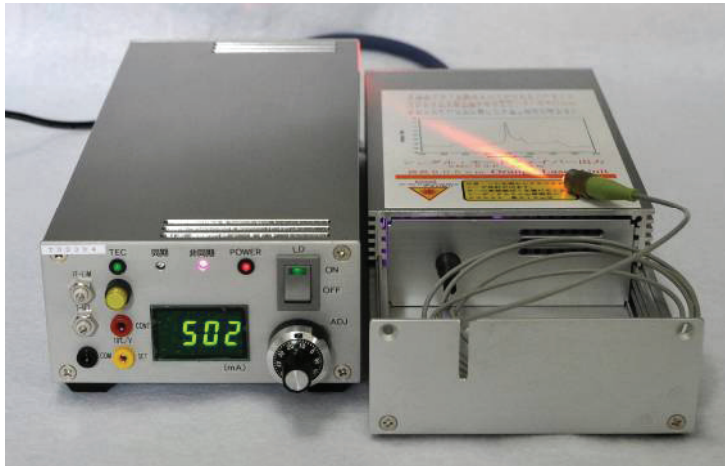
You can use it in the outside of under the Sunshiny environment, because Yellow Laser Beam is easily available to see under the condition where Red Laser Beam is difficult to see.

ORSA was established to support various needs in the world through more than 30 years experiance to handle Laser from Violet Blue to IR for Optical Communication System's module, Academic use, Laboratory use, and Optical measurement equipment system. Details of each product will be informed upon your request. Other assembly not shown here will be available to be upon your Special Request and then your expectations will be satisfied.

YELLOW & ORANGE Laser with a Single Mode Fiber

Pure-YELLOW 580nm / Vivid-ORANGE 605nm

model: Yellow **OYO-010SF** / Orange **ORO-010SF**



Fiber Output Power
5~8mW or more available

Fiber type
SMC63P (PMF) 1.5m
with FC connector
(SC type is also available.)



UNIT Size W112 × H44 × L280 (mm)

A fiber is able to be stored in the unit case with a rolled form. therefore, you can keep it in safe without your concern about the fiber's damage while transferring or handling.



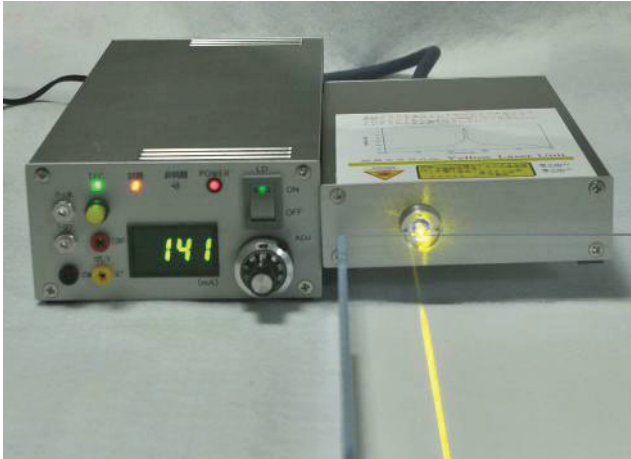
You can safekeep one like this.
How safe it would be!

Optical Research **ORSA** System Architect

COMBINATION with LASER DRIVE UNIT TOS304

Set with YELLOW LASER UNIT

Set with ORANGE LASER UNIT



You can use various type of laser through this Laser Drive Unit not only these Orange or Yellow Laser.

You can save the cost, then!

You can request TTL Pulse function as an option.

Max Current is 700mA, but we recommend to use this under 500mA because of warmness.

The function of linkage with Temperature and Laser Ladiation is alternative by the switch on the rear face.

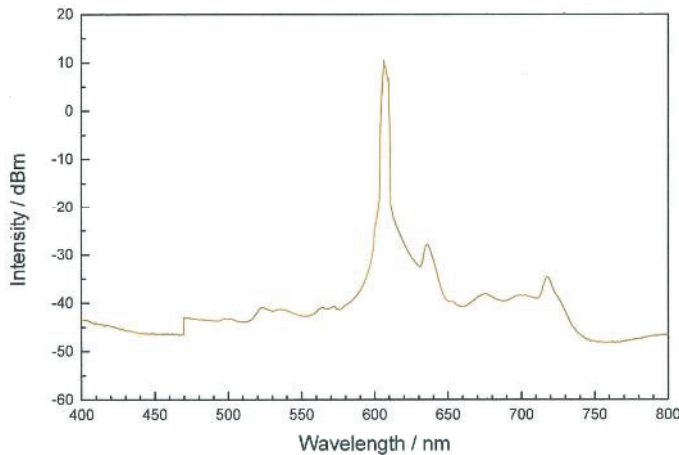
UNIT SIZE : Width112 x Hight55 x Length250 (mm)

Power Supply:12V 3.8A or 4A AC adapter (center+)

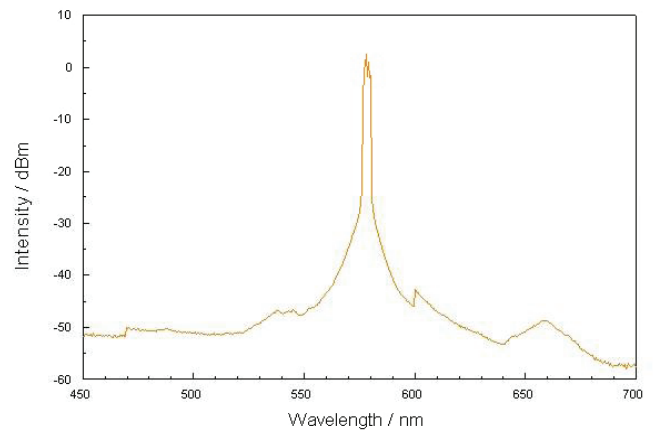
Specifications or details of this drive unit will be informed to you opon your request.



SPECTRUM DATA (by SUMITA OPTICAL GLASS, Inc.,)



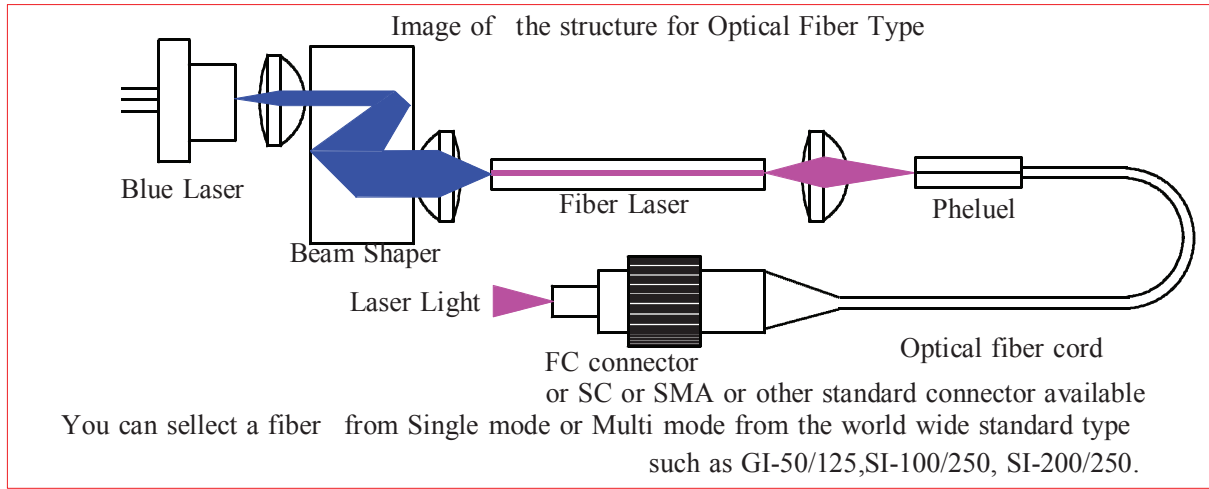
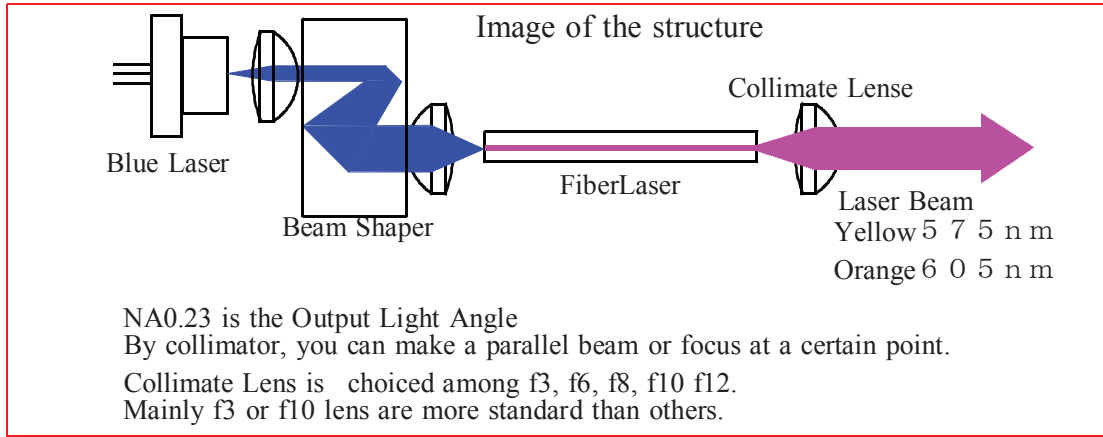
ORANGE LASER



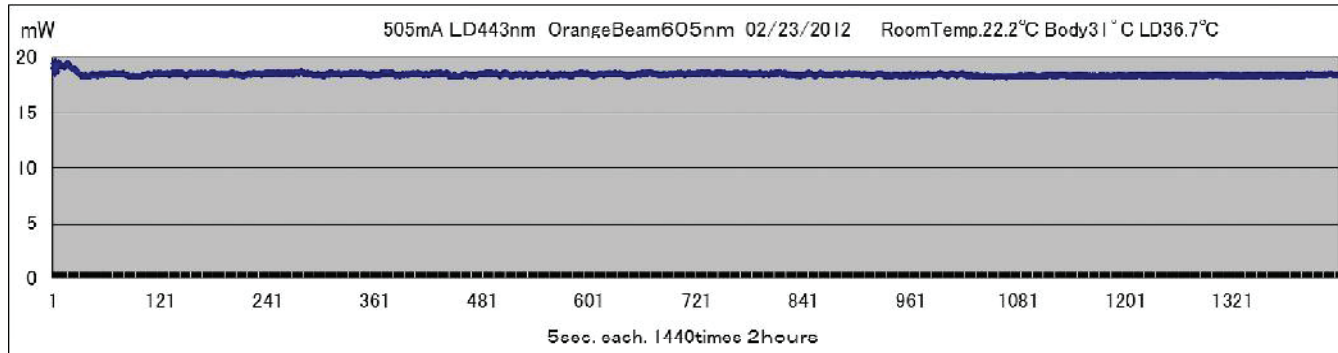
YELLOW LASER

[Above designs or specifications can be changed with our daily technical improvement. Please feel free to ask our newest ones.](#)

Optical Research **ORSA** System Architect



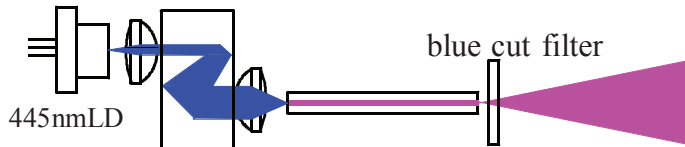
Orange Laser Stability of 2 hours in an air conditioned room. Laser Body is temperature controlled.



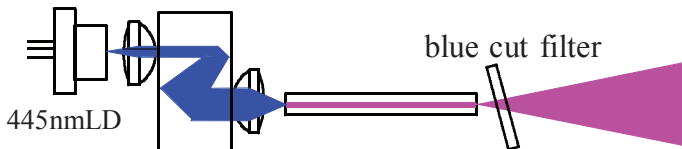
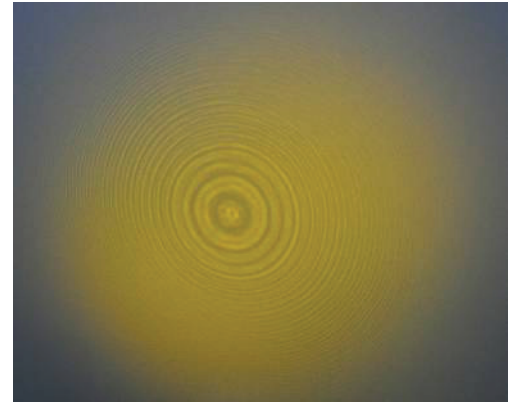
- Note 1: The laser power stability is very sensitive for the the temperature of the room and the blue LD.
 2: At a low power, the stability might not be good as a high power level as of 2012 Spring.
 3: A blue laser 445nm LD is used as a stimulating power.
 4: Fiber Laser is produced by Sumita Optical Glass, Inc.,
 5: Laser module and unit are assembled by ORSA in Japan. ---A Japan Made Product---

Optical Research ORSA System Architect

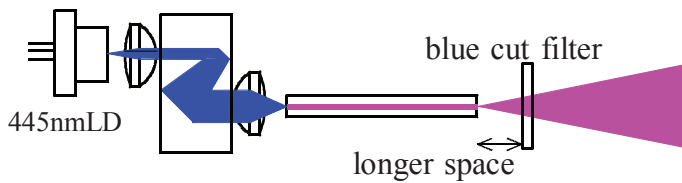
Laser beam Quality



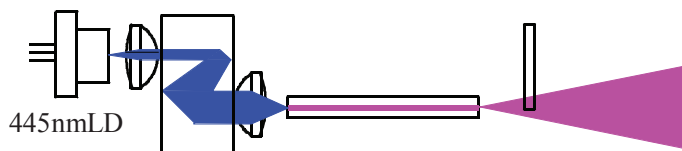
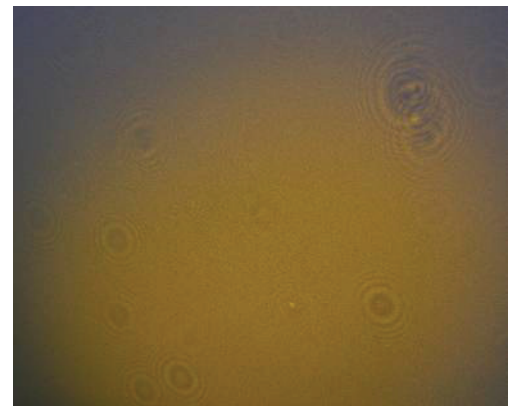
Because of the reflection from a blue cut filter, newtonlings or interference stripes appear.



As set a filter in angle, stripes will disappear.



As a beam search a wide plane of a glass, then dusts or scratches in the glass will be easily found.



The glass edge condition will be also examined by the expanded laser beam.

This laser might be efficient for glass plates or leses inspection.

