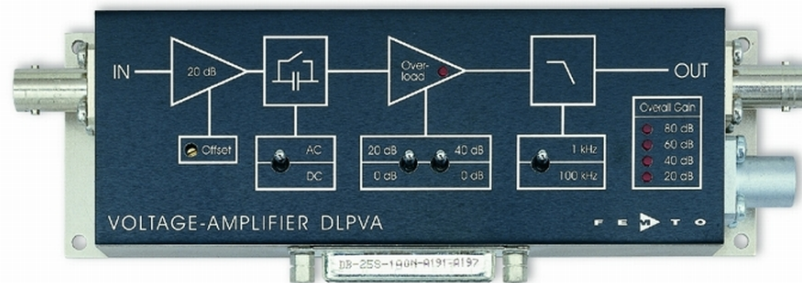




Datasheet

DLPVA-100-F Series

Variable Gain Low Frequency Voltage Amplifier

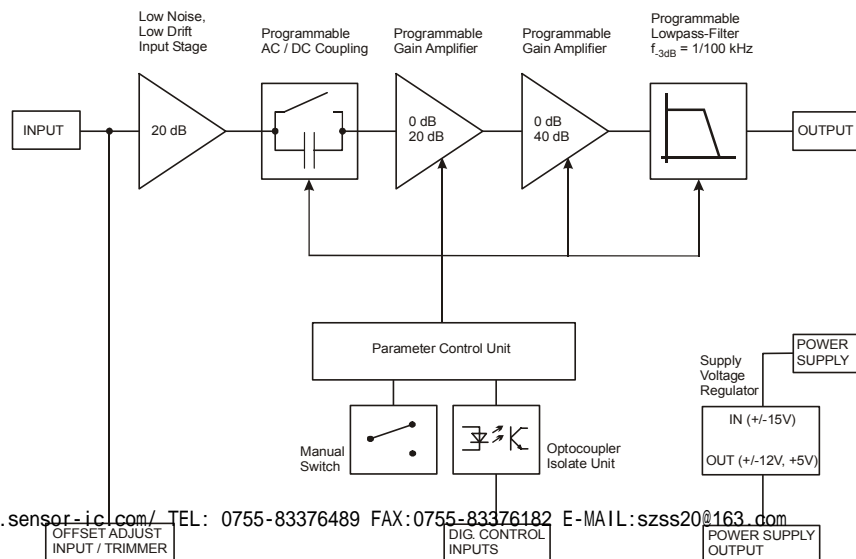


Features

- **Variable Gain 20 to 80 dB, Switchable in 20 dB Steps**
- **FET Input Stage, 1 TΩ Impedance**
- **Protection against ± 3 kV Transients**
- **Single Ended and True Differential Input Models**
- **Bandwidth DC - 100 kHz, Switchable to 1 kHz**
- **1.3 μV/°C DC-Drift**
- **120 dB CMRR**
- **5.5 nV/√Hz Input Noise**
- **Switchable AC/DC-Coupling**
- **Local and Remote Control**

Applications

- **Universal Laboratory Amplifier**
- **Automated Measurements**
- **Industrial Sensors**
- **Detector Preamplifier**
- **Integrated Measurement Systems**



Datasheet

DLPVA-100-F Series

Variable Gain Low Frequency Voltage Amplifier

Specifications	<i>Test Conditions</i>	<i>V_s = ± 15 V, T_a = 25°C</i>		
Gain	Gain Values	20, 40, 60, 80 dB indicated by four LEDs		
	Gain Accuracy	± 0.1 %	(between settings)	
		± 1 %	(overall)	
Frequency Response	Gain Flatness	± 0.1 dB		
	Lower Cut-Off Frequency	DC, switchable to 1.5 Hz		
	Upper Cut-Off Frequency	100 kHz, switchable to 1 kHz		
Time Response	Upper Cut-Off Frequency Roll-off	12 dB/Oct.		
	Rise / Fall Time (10% - 90%)	3.5 μs (@ BW = 100 kHz) 350 μs (@ BW = 1 kHz)		
Input	Input Impedance	1 TΩ		
	Input Voltage Drift	1.3 μV/K		
	Equivalent Input Voltage Noise	Gain Setting	DLPVA-100-F-S	DLPVA-100-F-D
		60, 80 dB	5.5 nV/√Hz	6.9 nV/√Hz
		40 dB	8 nV/√Hz	10 nV/√Hz
		20 dB	60 nV/√Hz	60 nV/√Hz
	Equivalent Input Current Noise	1.6 fA/√Hz		
	1/f-Noise Corner	80 Hz		
	Input Bias Current	1 pA		
	Input Bias Current Drift	Factor 2.3 / 10 °C		
	Input Offset Voltage	± 5 mV, adjustable by offset trimmer and external control voltage		
	<i>Single Ended Input, Model "DLPVA-100-F-S" only:</i>			
Input Voltage Range for linear Amplification:		± 0.6 V		
<i>True Differential Input, Model "DLPVA-100-F-D" only:</i>				
Common Mode Voltage Range		± 5 V		
CMRR	120 dB	(@ 100 Hz)		
	100 dB	(@ 10 kHz)		
	80 dB	(@ 60 kHz)		
Output	Output Impedance	50 Ω (terminate with > 10 kΩ load for best performance)		
	Output Voltage Range	± 10 V (@ > 10 kΩ load)		
	Output Current (max.)	± 20 mA		
	Output Overload Recovery Time	0.5 ms (after 20x overload)		

Datasheet**DLPVA-100-F Series****Variable Gain
Low Frequency Voltage Amplifier**

Overload LED	<p>The amplifier features a LED to signalize an overload condition. The Overload LED will turn on if the signal level within the signal path exceeds the linear operating range. In order to ensure the correct operation of the amplifier without signal distortions reduce the gain setting until the Overload LED turns off.</p> <p>The Overload LED may also turn on under the following operating conditions:</p> <ul style="list-style-type: none"> - The amplifier is operated with open input or with a high source impedance. For proper operation please use a source impedance of less than 100 MΩ or switch to a lower gain setting. - When using a DLPVA-F-D with differential input stage the Overload LED may turn on if the common mode input voltage exceeds ± 5 V or if the source is totally floating with respect to the amplifier ground. For proper operation make sure that the common mode voltage stays within ± 5 V with respect to the amplifier ground and make a valid connection between the source ground and the amplifier ground to ensure that the inputs cannot drift outside the tolerable common mode range. 	
Remote Offset Control	Offset Control Voltage Range	± 10 V, corresponds to ± 5 mV input offset
	Offset Control Input Impedance	200 k Ω
Remote Digital Control	Control Input Voltage Range	Low: - 0.8 ... + 0.8 V High: + 1.8 ... + 12 V, TTL / CMOS compatible
	Control Input Current	0 mA @ 0 V, 1.5 mA @ + 5 V, 4.5 mA @ + 12 V
	Overload Output	Non active: + 5 V, max. 1 mA, active: 0.8 V, max. -10 mA
Power Supply	Supply Voltage	± 15 V (± 14.5 V to ± 16 V)
	Supply Current	± 75 mA typ. (depends on operating conditions, recommended power supply capability minimum 150 mA)
Case	Weight	0.32 kg (0.7 lbs)
	Material	AlMg4.5Mn, nickel-plated
Temperature Range	Storage Temperature	- 40 $^{\circ}$ C to + 100 $^{\circ}$ C
	Operating Temperature	0 $^{\circ}$ C to + 60 $^{\circ}$ C
Absolute Maximum Ratings	Power Supply Voltage	± 21 V
	Control Input Voltage	+ 16 V / - 5 V
	Signal Input Voltage	± 15 Vp
	Transient Input Voltage	± 3 kV (discharge from 5 nF source)

Datasheet**DLPVA-100-F Series****Variable Gain
Low Frequency Voltage Amplifier**

Connectors

Input

Single Ended Input, Model "DLPVA-100-F-S":
BNC*True Differential Input, Model "DLPVA-100-F-D":*

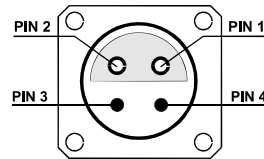
LEMO series 1S, 4-pin fixed socket

Pin 1: non inverting input

Pin 2: inverting input

Pin 3: GND

Pin 4: N.C.



Output

BNC

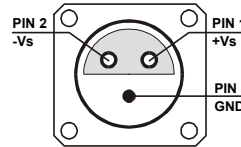
Power Supply

LEMO series 1S, 3-pin fixed socket

Pin 1: + 15V

Pin 2: - 15V

Pin 3: GND



Control Port

Sub-D 25-pin, female, qual. class 2

Pin 1: +12 V (stabilized power supply output,
max. 100 mA)Pin 2: -12 V (stabilized power supply output,
max. 100 mA)

Pin 3: AGND (analog ground)

Pin 4: +5 V (stabilized power supply output,
max. 50 mA)

Pin 5: digital output: overload

Pin 6: NC

Pin 7: NC

Pin 8: offset control voltage input

Pin 9: DGND (ground f. digital control Pin 10 - 25)

Pin 10: NC

Pin 11: digital control input: gain, LSB

Pin 12: digital control input: gain, MSB

Pin 13: digital control input: AC/DC

Pin 14: digital control input: 100 kHz / 1 kHz

Pin 15 - 25: NC

**Variable Gain
Low Frequency Voltage Amplifier**

Remote Control Operation

General

Remote control input bits are opto-isolated and connected by logical OR to local switch setting. For remote control a switch setting, set the corresponding local switch to "0 dB", "AC" and "1 kHz" and select the wanted setting via a bit-code at the corresponding digital inputs. Mixed operation, e.g. local gain setting and remote controlled bandwidth setting, is also possible.

Gain Setting

Gain	Pin 11	Pin 12
20 dB	low	low
40 dB	high	low
60 dB	low	high
80 dB	high	high

AC/DC Setting

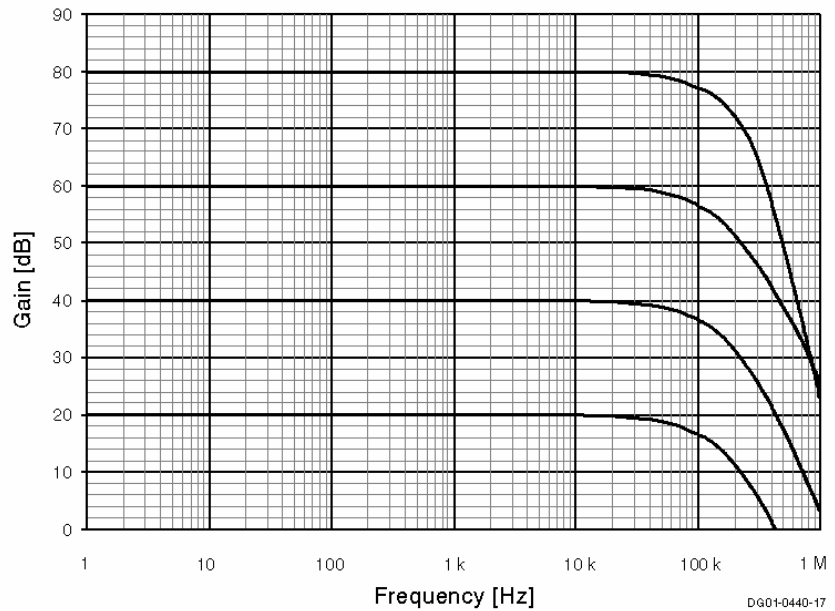
Coupling	Pin 13
AC	low
DC	high

Bandwidth Setting

Bandwidth	Pin 14
1 kHz	low
100 kHz	high

Typical Performance Characteristics

Frequency Response (Logarithmic)

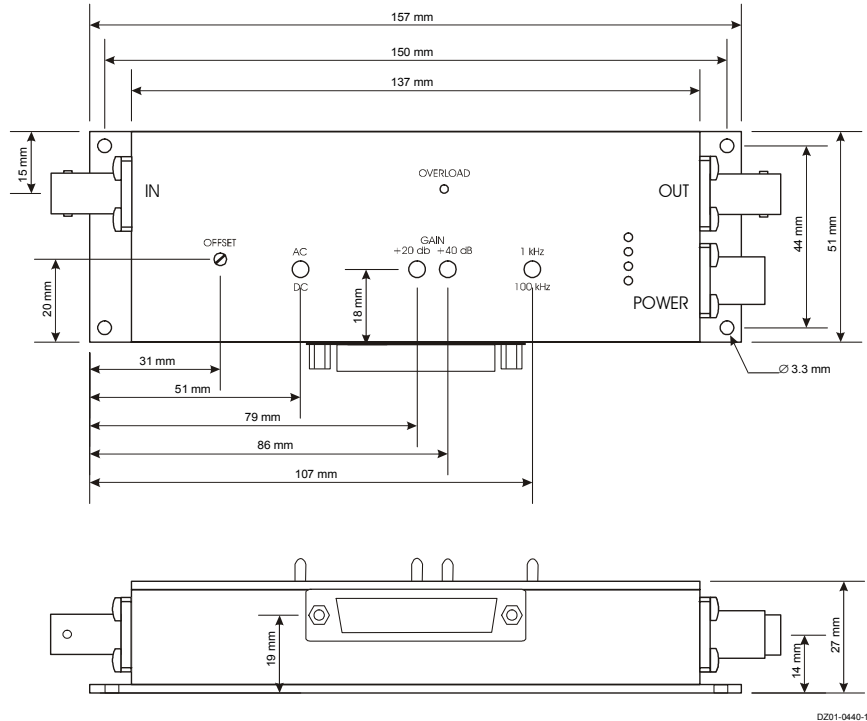


Datasheet

DLPVA-100-F Series

Variable Gain Low Frequency Voltage Amplifier

Dimensions



DZ01-0440-18

Ordering Information

Available Models

Model No.: DLPVA-100-F-S
- FET, single-ended input (BNC-conector input)

Model No.: DLPVA-100-F-D
- FET, true differential input (LEMO-conector input)

FEMTO Messtechnik GmbH
Klosterstr. 64
D-10179 Berlin · Germany
Tel.: +49-(0)30-280 4711-0
Fax: +49-(0)30-280 4711-11
e-mail: info@femto.de
<http://www.femto.de>

Specifications are subject to change without notice. Information furnished herein is believed to be accurate and reliable. However, no responsibility is assumed by FEMTO Messtechnik GmbH for its use, nor for any infringement of patents or other rights granted by implication or otherwise under any patent rights of FEMTO Messtechnik GmbH. Product names mentioned may also be trademarks used here for identification purposes only.

© by FEMTO Messtechnik GmbH
Printed in Germany

SOPHISTICATED TOOLS FOR SIGNAL RECOVERY





Datasheet

LUCI-10

**USB to D-Sub Control Interface
for FEMTO Amplifiers**



Features	<ul style="list-style-type: none"> • Compact Digital I/O Interface for USB Remote Control of FEMTO Amplifiers • Supports Opto-Isolation of Amplifier Signal Path from PC USB Port • 16 Digital Outputs, 3 Opto-Isolated Digital Inputs • Bus-Powered Operation • System Driver, Application Software and VI's for use with LabVIEW™ Included
Applications	<ul style="list-style-type: none"> • Remote Control of FEMTO® Amplifiers and Photoreceivers Directly from a PC
Block Diagram	<p style="text-align: right;">BS-LUCI-10_R1</p>

Hardware Specifications	<table border="0"> <tr> <td data-bbox="259 1617 470 1648">General Characteristics</td> <td data-bbox="535 1617 730 1648">Bus Interface</td> <td data-bbox="844 1617 1055 1648">USB 2.0 (full-speed)</td> </tr> <tr> <td></td> <td data-bbox="535 1648 730 1680">Digital I/O Channels</td> <td data-bbox="844 1648 1055 1680">16 output lines 3 opto-isolated input lines</td> </tr> <tr> <td></td> <td data-bbox="535 1701 617 1732">Supply</td> <td data-bbox="844 1701 1299 1764">PC USB port, + 5 V, typ. 100 mA, bus-powered (no auxiliary power supply required)</td> </tr> <tr> <td></td> <td data-bbox="535 1764 649 1795">Connectors</td> <td data-bbox="844 1764 974 1795">USB type A D-Sub, 25 pin, male</td> </tr> <tr> <td></td> <td data-bbox="535 1816 600 1848">Cable</td> <td data-bbox="844 1816 1055 1848">AWG 28, length 1.8 m</td> </tr> <tr> <td data-bbox="259 1869 324 1900">Output</td> <td data-bbox="535 1869 730 1900">Number of Channels</td> <td data-bbox="844 1869 1380 1932">16 output lines, supporting opto-isolation inside FEMTO amplifiers and photoreceivers</td> </tr> <tr> <td></td> <td data-bbox="535 1932 730 1963">Output Voltage Range</td> <td data-bbox="844 1932 1380 1995">LOW bit: 0 ... + 0.5 V (@ 0 ... 2 mA output current) HIGH bit: + 4 ... + 5.5 V (@ 0 ... 2 mA output current)</td> </tr> <tr> <td></td> <td data-bbox="535 1995 730 2047">Max. Current Writing Rate</td> <td data-bbox="844 1995 1055 2047">6 mA per channel max. 800 operations per second</td> </tr> </table> <p>SUNSTAR自动化 http://www.sensor-ic.com/ TEL: 0755-83376489 FAX: 0755-83376182 E-MAIL: szss20@163.com</p>	General Characteristics	Bus Interface	USB 2.0 (full-speed)		Digital I/O Channels	16 output lines 3 opto-isolated input lines		Supply	PC USB port, + 5 V, typ. 100 mA, bus-powered (no auxiliary power supply required)		Connectors	USB type A D-Sub, 25 pin, male		Cable	AWG 28, length 1.8 m	Output	Number of Channels	16 output lines, supporting opto-isolation inside FEMTO amplifiers and photoreceivers		Output Voltage Range	LOW bit: 0 ... + 0.5 V (@ 0 ... 2 mA output current) HIGH bit: + 4 ... + 5.5 V (@ 0 ... 2 mA output current)		Max. Current Writing Rate	6 mA per channel max. 800 operations per second
General Characteristics	Bus Interface	USB 2.0 (full-speed)																							
	Digital I/O Channels	16 output lines 3 opto-isolated input lines																							
	Supply	PC USB port, + 5 V, typ. 100 mA, bus-powered (no auxiliary power supply required)																							
	Connectors	USB type A D-Sub, 25 pin, male																							
	Cable	AWG 28, length 1.8 m																							
Output	Number of Channels	16 output lines, supporting opto-isolation inside FEMTO amplifiers and photoreceivers																							
	Output Voltage Range	LOW bit: 0 ... + 0.5 V (@ 0 ... 2 mA output current) HIGH bit: + 4 ... + 5.5 V (@ 0 ... 2 mA output current)																							
	Max. Current Writing Rate	6 mA per channel max. 800 operations per second																							

USB to D-Sub Control Interface for FEMTO Amplifiers

Software Specifications

Software
(included on CD)

Device Driver	dynamic link library (DLL) for integration in Microsoft Windows [®] operating system for use with C/C++, LabWindows [™] /CVI [™] or LabVIEW [™]
Application Software	GUI (graphical user interface) programs for simple remote control of FEMTO amplifiers and photoreceivers provided as executable programs and LabVIEW projects
LabVIEW Programs	sample programs to control and test the LUCI-10 hardware (including front panel and block diagram)
LabVIEW Library	special VI toolkit for integration in LabVIEW development environment

Note: A National Instruments LabVIEW[™] license is not included in this software package. For use of the GUI application programs the LabVIEW Run-Time Engine is required. If not detected on the host PC during the installation process the LabVIEW Run-Time Engine will be installed automatically from the CD.

System Requirements

Operating System	Microsoft Windows XP with Service Pack 2, or higher
Processor	Intel Pentium III or AMD Athlon, or better
System Memory	512 MB of RAM, or more
Hard Disk Space	about 200 MB
Interface Port	USB 1.1 or USB 2.0
Supported FEMTO Modules	any standard FEMTO amplifier or photoreceiver with 25 pin D-Sub socket, except model HLVA-100

Optional Requirements

For development of own application programs an additional development environment like LabVIEW Version 8 (or higher) or C/C++ is required.

Legal Notice

LabVIEW, CVI, National Instruments and NI are trademarks of National Instruments. Neither FEMTO Messtechnik GmbH, nor any software programs or other goods or services offered by FEMTO Messtechnik GmbH, are affiliated with, endorsed by, or sponsored by National Instruments.

The mark LabWindows is used under a license from Microsoft Corporation.

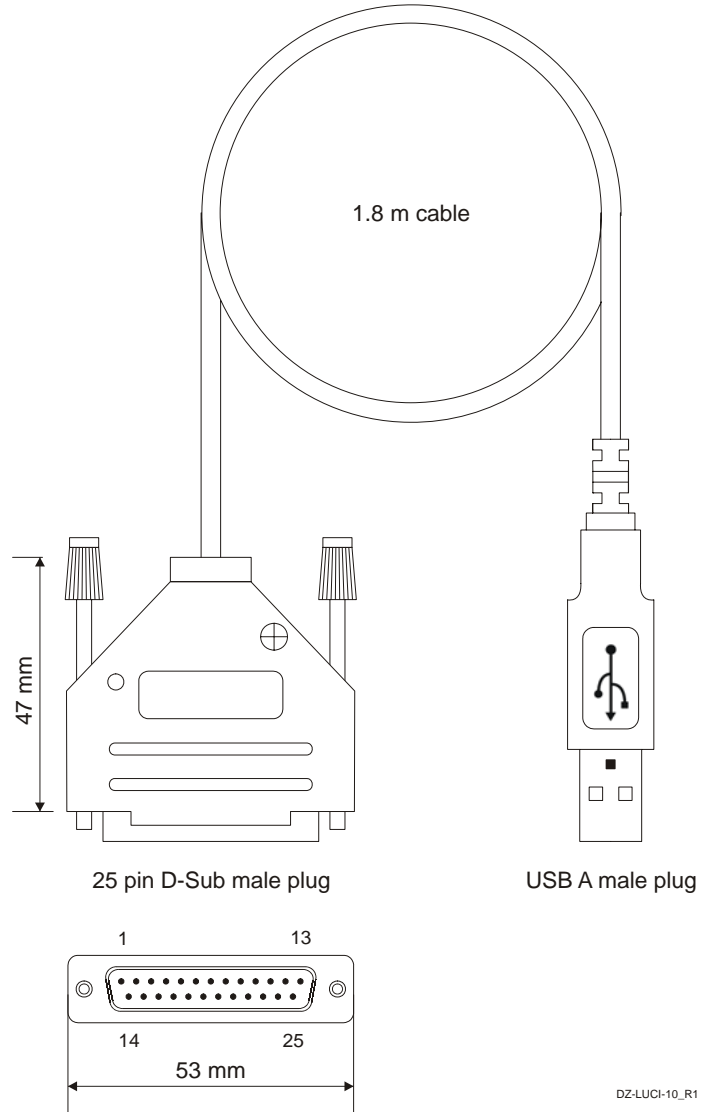
Microsoft and Windows are either registered trademarks or trademarks of Microsoft Corporation in the United States and/or other countries.

FEMTO and the FEMTO logo are trademarks or registered trademarks of FEMTO Messtechnik GmbH in Germany, the U.S. and/or other countries.

Product and company names mentioned may also be trademarks or trade names of their respective companies used here for identification purposes only.

USB to D-Sub Control Interface for FEMTO Amplifiers

Dimensions



FEMTO Messtechnik GmbH
Paul-Lincke-Ufer 34
D-10999 Berlin · Germany
Tel.: +49 (0)30 - 4 46 93 86
Fax: +49 (0)30 - 4 46 93 88
e-mail: info@femto.de
<http://www.femto.de>

Specifications are subject to change without notice. Information furnished herein is believed to be accurate and reliable. However, no responsibility is assumed by FEMTO Messtechnik GmbH for its use, nor for any infringement of patents or other rights granted by implication or otherwise under any patent rights of FEMTO Messtechnik GmbH. Product names mentioned may also be trademarks used here for identification purposes only.
© by FEMTO Messtechnik GmbH
Printed in Germany



Datasheet

LUCI-10

**USB to D-Sub Control Interface
for FEMTO Amplifiers**



Features	<ul style="list-style-type: none"> • Compact Digital I/O Interface for USB Remote Control of FEMTO Amplifiers • Supports Opto-Isolation of Amplifier Signal Path from PC USB Port • 16 Digital Outputs, 3 Opto-Isolated Digital Inputs • Bus-Powered Operation • System Driver, Application Software and VI's for use with LabVIEW™ Included
Applications	<ul style="list-style-type: none"> • Remote Control of FEMTO® Amplifiers and Photoreceivers Directly from a PC
Block Diagram	<p style="text-align: right;">BS-LUCI-10_R1</p>

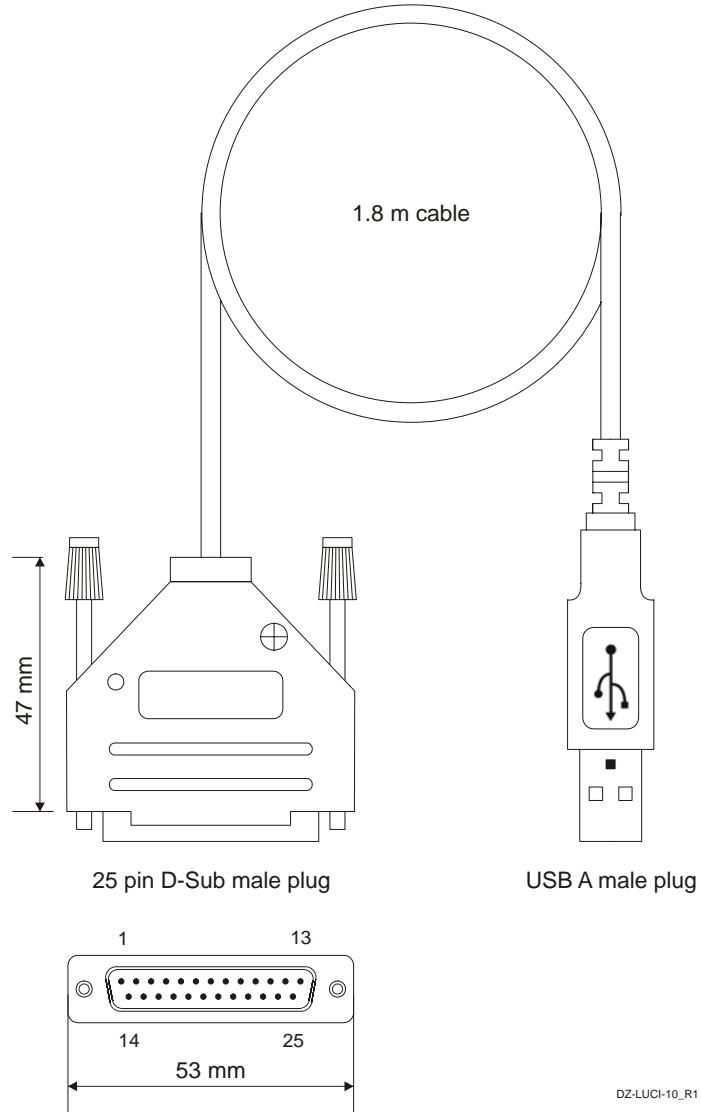
Hardware Specifications	<table border="0"> <tr> <td data-bbox="259 1617 500 1648">General Characteristics</td> <td data-bbox="535 1617 730 1648">Bus Interface</td> <td data-bbox="844 1617 1443 1648">USB 2.0 (full-speed)</td> </tr> <tr> <td></td> <td data-bbox="535 1648 730 1680">Digital I/O Channels</td> <td data-bbox="844 1648 1443 1680">16 output lines 3 opto-isolated input lines</td> </tr> <tr> <td></td> <td data-bbox="535 1701 730 1732">Supply</td> <td data-bbox="844 1701 1443 1753">PC USB port, + 5 V, typ. 100 mA, bus-powered (no auxiliary power supply required)</td> </tr> <tr> <td></td> <td data-bbox="535 1764 730 1795">Connectors</td> <td data-bbox="844 1764 1443 1795">USB type A</td> </tr> <tr> <td></td> <td data-bbox="535 1816 730 1848">Cable</td> <td data-bbox="844 1816 1443 1848">D-Sub, 25 pin, male AWG 28, length 1.8 m</td> </tr> <tr> <td data-bbox="259 1879 500 1911">Output</td> <td data-bbox="535 1879 730 1911">Number of Channels</td> <td data-bbox="844 1879 1443 1932">16 output lines, supporting opto-isolation inside FEMTO amplifiers and photoreceivers</td> </tr> <tr> <td></td> <td data-bbox="535 1932 730 1963">Output Voltage Range</td> <td data-bbox="844 1932 1443 1984">LOW bit: 0 ... + 0.5 V (@ 0 ... 2 mA output current) HIGH bit: + 4 ... + 5.5 V (@ 0 ... 2 mA output current)</td> </tr> <tr> <td></td> <td data-bbox="535 1984 730 2016">Max. Current Writing Rate</td> <td data-bbox="844 1984 1443 2016">6 mA per channel max. 800 operations per second</td> </tr> </table> <p>SUNSTAR自动化 http://www.sensor-ic.com/ TEL: 0755-83376489 FAX: 0755-83376182 E-MAIL: szss20@163.com</p>	General Characteristics	Bus Interface	USB 2.0 (full-speed)		Digital I/O Channels	16 output lines 3 opto-isolated input lines		Supply	PC USB port, + 5 V, typ. 100 mA, bus-powered (no auxiliary power supply required)		Connectors	USB type A		Cable	D-Sub, 25 pin, male AWG 28, length 1.8 m	Output	Number of Channels	16 output lines, supporting opto-isolation inside FEMTO amplifiers and photoreceivers		Output Voltage Range	LOW bit: 0 ... + 0.5 V (@ 0 ... 2 mA output current) HIGH bit: + 4 ... + 5.5 V (@ 0 ... 2 mA output current)		Max. Current Writing Rate	6 mA per channel max. 800 operations per second
General Characteristics	Bus Interface	USB 2.0 (full-speed)																							
	Digital I/O Channels	16 output lines 3 opto-isolated input lines																							
	Supply	PC USB port, + 5 V, typ. 100 mA, bus-powered (no auxiliary power supply required)																							
	Connectors	USB type A																							
	Cable	D-Sub, 25 pin, male AWG 28, length 1.8 m																							
Output	Number of Channels	16 output lines, supporting opto-isolation inside FEMTO amplifiers and photoreceivers																							
	Output Voltage Range	LOW bit: 0 ... + 0.5 V (@ 0 ... 2 mA output current) HIGH bit: + 4 ... + 5.5 V (@ 0 ... 2 mA output current)																							
	Max. Current Writing Rate	6 mA per channel max. 800 operations per second																							

USB to D-Sub Control Interface for FEMTO Amplifiers

<p>Software Specifications</p> <p>Software (included on CD)</p>	<table border="0"> <tr> <td data-bbox="558 414 686 459">Device Driver</td> <td data-bbox="869 414 1348 515">dynamic link library (DLL) for integration in Microsoft Windows[®] operating system for use with C/C++, LabWindows[™] /CVI[™] or LabVIEW[™]</td> </tr> <tr> <td data-bbox="558 537 750 571">Application Software</td> <td data-bbox="869 537 1380 638">GUI (graphical user interface) programs for simple remote control of FEMTO amplifiers and photoreceivers provided as executable programs and LabVIEW projects</td> </tr> <tr> <td data-bbox="558 649 742 683">LabVIEW Programs</td> <td data-bbox="869 649 1412 716">sample programs to control and test the LUCI-10 hardware (including front panel and block diagram)</td> </tr> <tr> <td data-bbox="558 728 710 772">LabVIEW Library</td> <td data-bbox="869 728 1380 795">special VI toolkit for integration in LabVIEW development environment</td> </tr> </table> <p>Note: A National Instruments LabVIEW[™] license is not included in this software package. For use of the GUI application programs the LabVIEW Run-Time Engine is required. If not detected on the host PC during the installation process the LabVIEW Run-Time Engine will be installed automatically from the CD.</p>	Device Driver	dynamic link library (DLL) for integration in Microsoft Windows [®] operating system for use with C/C++, LabWindows [™] /CVI [™] or LabVIEW [™]	Application Software	GUI (graphical user interface) programs for simple remote control of FEMTO amplifiers and photoreceivers provided as executable programs and LabVIEW projects	LabVIEW Programs	sample programs to control and test the LUCI-10 hardware (including front panel and block diagram)	LabVIEW Library	special VI toolkit for integration in LabVIEW development environment				
Device Driver	dynamic link library (DLL) for integration in Microsoft Windows [®] operating system for use with C/C++, LabWindows [™] /CVI [™] or LabVIEW [™]												
Application Software	GUI (graphical user interface) programs for simple remote control of FEMTO amplifiers and photoreceivers provided as executable programs and LabVIEW projects												
LabVIEW Programs	sample programs to control and test the LUCI-10 hardware (including front panel and block diagram)												
LabVIEW Library	special VI toolkit for integration in LabVIEW development environment												
<p>System Requirements</p>	<table border="0"> <tr> <td data-bbox="558 996 726 1064">Operating System</td> <td data-bbox="869 996 1356 1064">Microsoft Windows XP with Service Pack 2, or higher</td> </tr> <tr> <td data-bbox="558 1064 654 1097">Processor</td> <td data-bbox="869 1064 1244 1097">Intel Pentium III or AMD Athlon, or better</td> </tr> <tr> <td data-bbox="558 1097 710 1131">System Memory</td> <td data-bbox="869 1097 1109 1131">512 MB of RAM, or more</td> </tr> <tr> <td data-bbox="558 1131 710 1164">Hard Disk Space</td> <td data-bbox="869 1131 1013 1164">about 200 MB</td> </tr> <tr> <td data-bbox="558 1164 686 1198">Interface Port</td> <td data-bbox="869 1164 1061 1198">USB 1.1 or USB 2.0</td> </tr> <tr> <td data-bbox="558 1198 813 1220">Supported FEMTO Modules</td> <td data-bbox="869 1198 1412 1220">any standard FEMTO amplifier or photoreceiver with 25 pin D-Sub socket, except model HLVA-100</td> </tr> </table>	Operating System	Microsoft Windows XP with Service Pack 2, or higher	Processor	Intel Pentium III or AMD Athlon, or better	System Memory	512 MB of RAM, or more	Hard Disk Space	about 200 MB	Interface Port	USB 1.1 or USB 2.0	Supported FEMTO Modules	any standard FEMTO amplifier or photoreceiver with 25 pin D-Sub socket, except model HLVA-100
Operating System	Microsoft Windows XP with Service Pack 2, or higher												
Processor	Intel Pentium III or AMD Athlon, or better												
System Memory	512 MB of RAM, or more												
Hard Disk Space	about 200 MB												
Interface Port	USB 1.1 or USB 2.0												
Supported FEMTO Modules	any standard FEMTO amplifier or photoreceiver with 25 pin D-Sub socket, except model HLVA-100												
<p>Optional Requirements</p>	<p>For development of own application programs an additional development environment like LabVIEW Version 8 (or higher) or C/C++ is required.</p>												
<p>Legal Notice</p>	<p>LabVIEW, CVI, National Instruments and NI are trademarks of National Instruments. Neither FEMTO Messtechnik GmbH, nor any software programs or other goods or services offered by FEMTO Messtechnik GmbH, are affiliated with, endorsed by, or sponsored by National Instruments.</p> <p>The mark LabWindows is used under a license from Microsoft Corporation.</p> <p>Microsoft and Windows are either registered trademarks or trademarks of Microsoft Corporation in the United States and/or other countries.</p> <p>FEMTO and the FEMTO logo are trademarks or registered trademarks of FEMTO Messtechnik GmbH in Germany, the U.S. and/or other countries.</p> <p>Product and company names mentioned may also be trademarks or trade names of their respective companies used here for identification purposes only.</p>												

USB to D-Sub Control Interface for FEMTO Amplifiers

Dimensions



FEMTO Messtechnik GmbH
Paul-Lincke-Ufer 34
D-10999 Berlin · Germany
Tel.: +49 (0)30 – 4 46 93 86
Fax: +49 (0)30 – 4 46 93 88
e-mail: info@femto.de
<http://www.femto.de>

Specifications are subject to change without notice. Information furnished herein is believed to be accurate and reliable. However, no responsibility is assumed by FEMTO Messtechnik GmbH for its use, nor for any infringement of patents or other rights granted by implication or otherwise under any patent rights of FEMTO Messtechnik GmbH. Product names mentioned may also be trademarks used here for identification purposes only.
© by FEMTO Messtechnik GmbH
Printed in Germany