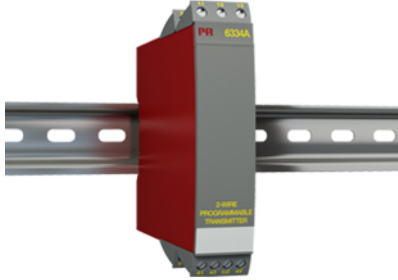


2-wire programmable transmitter



6334A

- TC input
- High measurement accuracy
- Galvanic isolation
- Programmable sensor error value
- 1- or 2-channel version



Application

- Linearized temperature measurement with TC sensor.
- Amplification of bipolar mV signals to a 4...20 mA signal, optionally linearized according to a defined linearization function.

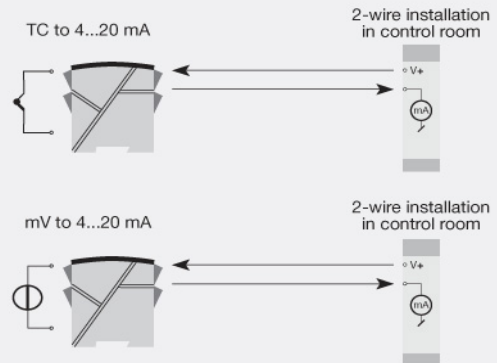
Technical characteristics

- Within a few seconds the user can program PR6334A to measure temperatures within all TC ranges defined by the norms.
- Cold junction compensation (CJC) with a built-in temperature sensor.
- A limit can be programmed on the output signal.
- Continuous check of vital stored data for safety reasons.

Mounting / installation

- Mounted vertically or horizontally on a DIN rail. Using the 2-channel version up to 84 channels can be mounted per meter.

Connections



Order:

Type	Galvanic isolation	Channels
6334A	1500 VAC : 2	Single : A Double : B

Environmental Conditions

Specifications range.....	-40°C to +60°C
Calibration temperature.....	20...28°C
Relative humidity.....	< 95% RH (non-cond.)
Protection degree.....	IP20

Mechanical specifications

Dimensions (HxWxD).....	109 x 23.5 x 104 mm
Weight (1 / 2 channels).....	145 / 185 g ₂
Wire size.....	1 x 1.5 mm ² stranded wire

Common specifications

Supply voltage.....	7.2...35 VDC
Internal consumption.....	0.17...0.8 W
Voltage drop.....	7.2 VDC
Isolation voltage, test / working.....	1.5 kVAC / 50 VAC
Isolation voltage, ch. 1 / ch. 2.....	3.75 kVAC
Warm-up time.....	5 min.
Communications interface.....	Loop Link
Signal / noise ratio.....	Min. 60 dB
Response time (programmable).....	1...60 s
EEPROM error check.....	< 3.5 s
Signal dynamics, input.....	18 bit
Signal dynamics, output.....	16 bit
Effect of supply voltage change.....	< 0.005% of span / VDC
EMC immunity influence.....	< ±0.5% of span
Extended EMC immunity: NAMUR NE 21, A criterion, burst.....	< ±1% of span

Input specifications

Max. offset.....	50% of selected max. value
TC input: Thermocouple type.....	B, E, J, K, L, N, R, S, T, U, W3, W5, LR
Cold junction compensation (CJC).....	< ±1.0°C
Voltage input: Measurement range.....	-12...150 mV
Min. measurement range (span), voltage input.....	5 mV
Input resistance, voltage input.....	Nom. 10 MΩ

Output specifications

Current output: Signal range.....	4...20 mA
Min. signal range.....	16 mA
Updating time.....	440 ms
Load resistance, current output.....	≤ (Vsupply - 7.2) / 0.023 [Ω]
Sensor error indication, current output.....	Programmable 3.5...23 mA
NAMUR NE 43 Upscale/Downscale.....	23 mA / 3.5 mA
*of span.....	= of the presently selected range

Approvals

EMC.....	EN 61326-1
ATEX.....	KEMA 10ATEX0005 X
GOST R.....	Yes