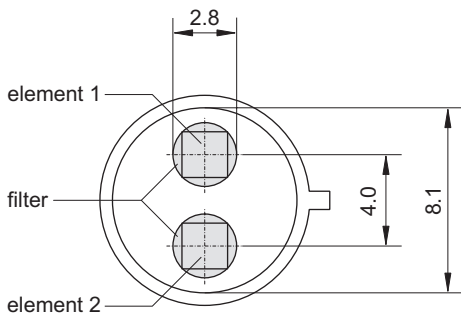
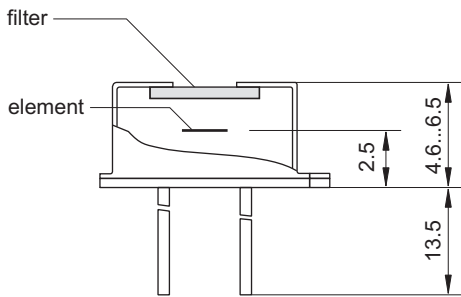
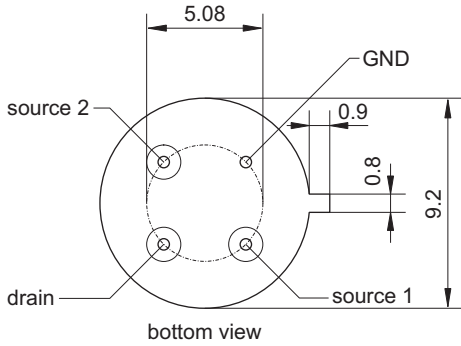


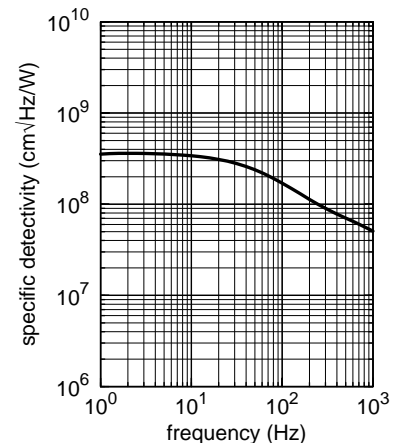
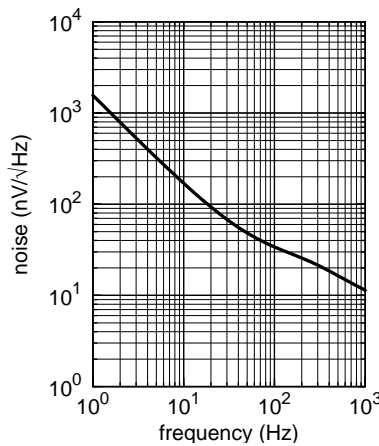
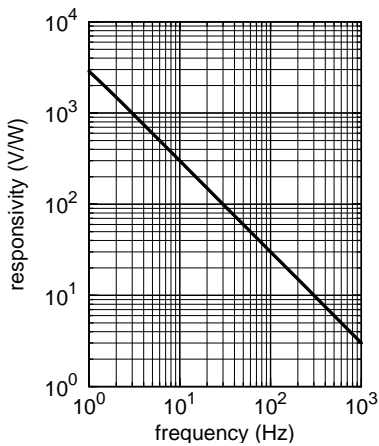
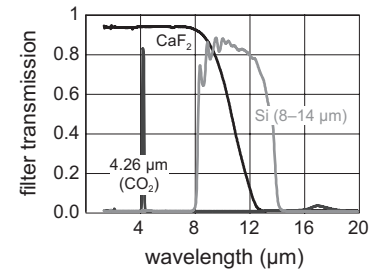
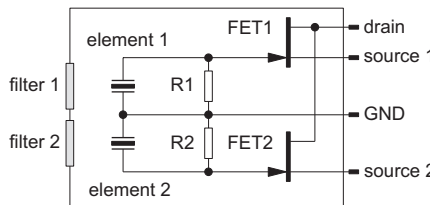
# 2LTA G2

## Pyroelectric Dual Channel Detector for Measurement Applications



|                                     |                                 |
|-------------------------------------|---------------------------------|
| element size                        | 2 mm × 2 mm                     |
| aperture                            | 2.8 mm                          |
| filter <sup>3</sup>                 | custom-designed                 |
| responsivity <sup>1,2</sup>         | >300 V/W                        |
| noise <sup>1</sup>                  | <170 nV/√Hz                     |
| specific detectivity <sup>1,2</sup> | >3.4·10 <sup>8</sup> cm √Hz / W |
| offset voltage                      | 0.4 to 1.5 V                    |
| operating voltage                   | 2 to 18 V                       |
| housing                             | TO 39                           |
| operating temperature               | -20 to 70 °C                    |
| storage temperature                 | -20 to 70 °C                    |

- 1) frequency: 10 Hz, detector temperature: 25 °C
- 2) black body source temperature: 500 K, filter transmission: 100 %
- 3) other filters on request



Further developments may entail modifications of indicated data without notification. Revision 05/2006. 19052006 scitecdias\_2itag2\_eng

Scitec Instruments Ltd – Bartles Industrial Estate  
 North Street, Redruth, TR15 1HR UK  
 phone: +44 (0)1209 314 608 · fax: +44 (0)1209 314 609  
 e-mail: sales@scitec.uk.com · www.scitec.uk.com

