



SensComp, Inc.
36704 Commerce Rd.
Livonia, MI 48150 USA
Telephone: (734) 953-4783
Fax: (734) 953-4518
www.senscomp.com

Analog IC Chip TL852

SensComp Electronic Component – TL852 Analog Integrated Circuit

Features

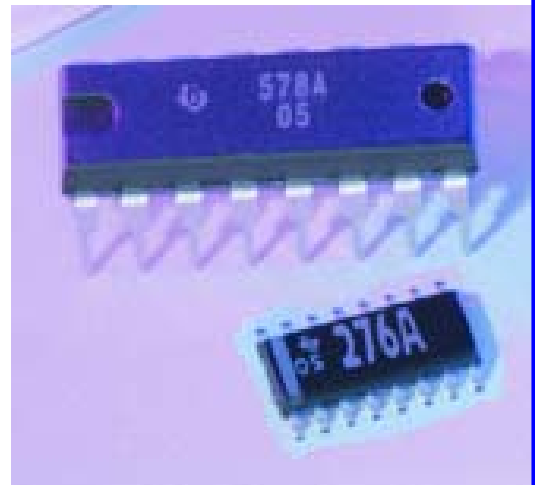
Economical Ranging Control when used with TL851 Digital IC
Operates With Single Supply Voltage.
Digitally Controlled Variable-Gain Variable-Bandwidth Amplifier.
Operational Frequency Range of 20 kHz to 90 kHz.
Overall Gain Adjustment with One External Resistor.
Interfaces to Electrostatic and Piezoelectric Transducers.
TTL Compatible.

Part No.

PID# 629409LF – Analog IC Chip TL852CD – 16 pin SOIC
(SMT) package (RoHS Compliant)
PID# 614906LF – Analog IC Chip TL852CN – 16 pin N
(thru-hole) package (RoHS Compliant)

Description

Specifications



The TL852 Analog IC Chip is an economical sonar ranging receiver integrated circuit for use with the TL851 digital control integrated circuit. A minimum of external components is required for operation, and this amplifier easily interfaces to SensComp's 50-kHz electrostatic transducers.

An external resistor from BIAS (pin 8) to GND (pin 16) provides the internal biasing reference. The amplifier's gain can be set with a resistor from G1IN (pin 1) to GADJ (pin 3). Required amplifier gain will vary for different applications. A nominal peak-to-peak value of 230 mV input during gain step 2 is recommended for most applications. For reliable operation, a level no lower than 50 mV should be used. The recommended detect level of 230 mV can be obtained for most amplifiers with an R1 value between 5000 ohm and 20,000 ohm. Digital control of amplifier gain is provided with gain control inputs GCA, GCB, GCC, and GCD. These inputs must be driven synchronously (all inputs stable within 0.1 ms) to avoid false receive output signals due to invalid logic counts. This can be done easily with the TL851 control integrated circuit. To dampen ringing of the 50-kHz electrostatic transducer, a 5000 ohm resistor from G1IN to XIN is recommended.

An external parallel combination of inductance and capacitance between LC and V_{CC} provides an amplifier with an externally controlled gain and Q. This not only allows control of gain to compensate for attenuation of signal with distance, but also maximizes noise and sidelobe rejection. Care must be taken to accurately tune the LC combination at operating frequency or gain and Q will be greatly reduced at higher gain steps.

AC coupling between stages of the amplifier is accomplished with a 0.01 mf capacitor for proper biasing. The receive output is normally held at a low level by an internal 1 mA current source. When an input of sufficient amplitude is received, the output is driven alternately by the 1 mA discharge current and a 50 mA charging current. A 1000 pF capacitor is required from REC to GND to integrate the received signal so that one or two noise pulses will not be recognized.

XIN provides clamping for the transformer secondary when used for transducer transmit drive. The TL852 operates over a supply voltage of 4.5 volts to 6.8 volts (+5 volts DC nominal voltage) and is characterized for operation from -40°C to +85°C.

For more information, visit our website: www.senscomp.com

Copyright © 2004 SensComp, Inc. 1/04/07

Absolute Maximum Ratings over Operating Free-Air Temperature Range

V _{CC} to ground (Pin 5 to16)	+7.0VDC
Voltage at any pin with respect to ground	-0.5 to +7.0 VDC
Voltage at any pin with respect to V _{CC}	-7.0 to +0.5 VDC
XIN (pin 2) input current (50% duty cycle).....	± 60 mA
Continuous power dissipation at (or below) 25° C free-air temperature (see note).....	1150 mW
Operating free-air temperature.....	-40° C to 85° C
Storage temperature range	-65° C to 150° C
Lead temperature 1.6 mm (1/16 inch) from case for 10 seconds	260° C

Note: For operation above 25° C, derate linearly at the rate of 9.2 mW/C

Recommended Operating Conditions

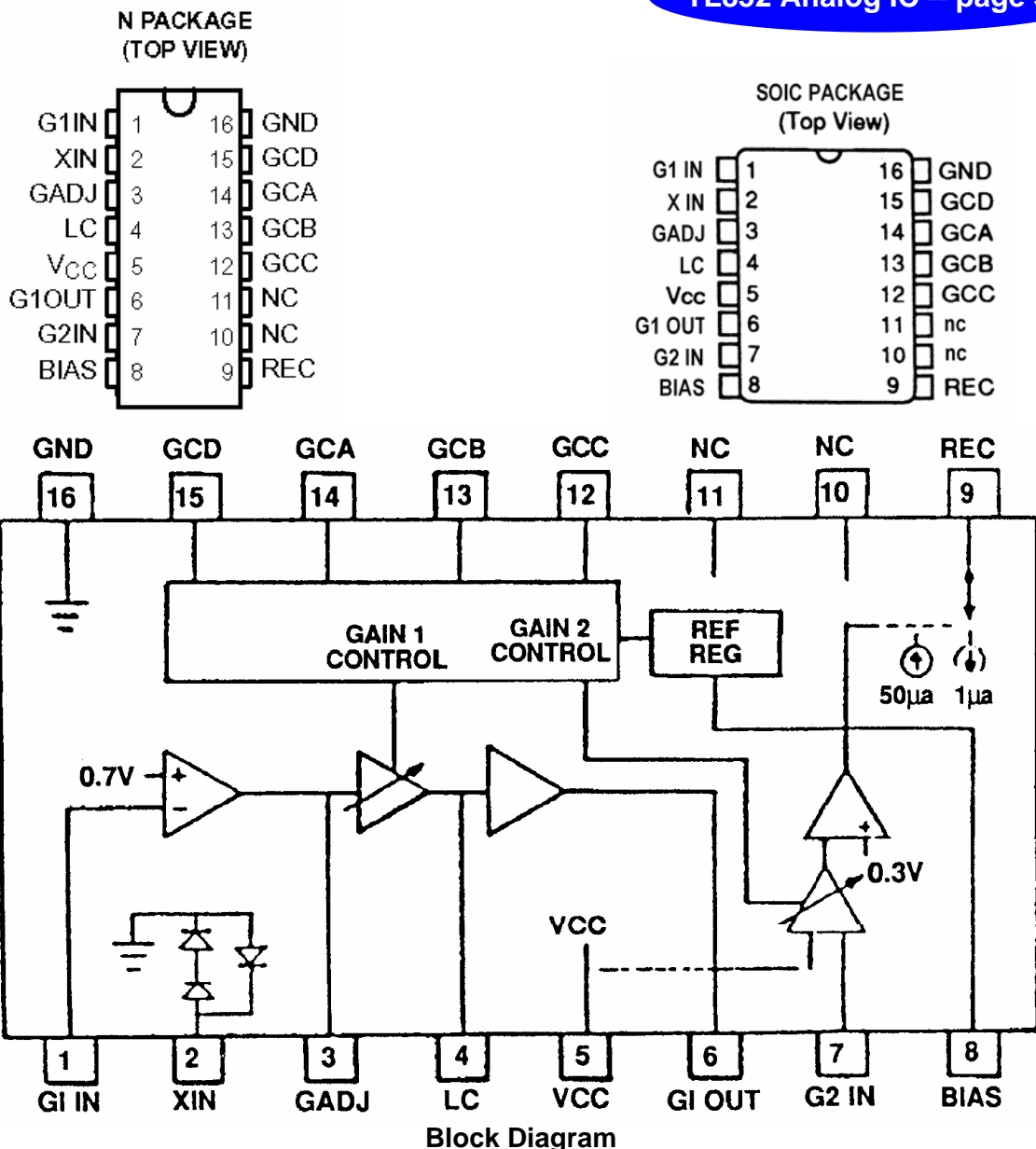
		MIN	MAX	UNIT
Supply Voltage, V _{cc}		4.5	6.8	V
High-level Input Voltage, V _{IH}	GCA, GCB, GCC, GCD	2.1		V
Low-level Input Voltage, V _{IL}	GCA, GCB, GCC, GCD		0.6	V
Bias Resistor between BIAS and GND	(typical)	64.	72	KΩ
Operating Free-air Temperature	(recommended)	-40	85	°C

Electrical Characteristics over Recommended Ranges of Supply Voltage (0 to 40° C)

PARAMETER		TEST CONDITIONS	MIN	TYP	MAX	UNIT
Continuous Operating Current					45	mA
High-level Input Current, I _{IH}	GCA, GCB, GCC, GCD	V _{IH} = 2V, V _{CC} = 5V		-0.5		μA
Low-level Input Current, I _{IL} ,	GCA, GCB, GCC, GCD	V _{IL} = 0, V _{CC} = 5V			-3	mA
Open Circuit Input Voltage	GCA, GCB, GCC, GCD	V _{CC} = 5V		2.5		V
Current through LC network					2.0	mA
Receive (REC) Output Current	No Signal Input	I _{G2IN} =-100 μA, V _O =0.3V		1		μA
	During Detect	I _{G2IN} =100 μA, V _O =0.1V		-50		μA
XIN Positive Clamp Voltage		I _{IN} = 40 mA			2.5	V
XIN Negative Clamp Voltage		I _{IN} = -40 mA		-1.3	-1.5	V

Pinout Description

Pin	Name	Description	Pin	Name	Description
1	G 1IN	Receiver Input	16	GND	Circuit Ground
2	XIN	Transducer Input	15	GCD	Gain Control D (MSB)
3	GADJ	Gain Adjustment	14	GCA	Gain Control A (LSB)
4	LC	Tuned Circuit	13	GCB	Gain Control B
5	V _{CC}	Positive Supply	12	GCC	Gain Control C
6	G1 OUT	First Gain Stage Output	11	n.c.	No internal connection
7	G2 IN	Second Gain Stage Input	10	n.c.	No internal connection
8	BIAS	Bias Resistor	9	REC	Detected Echo Output

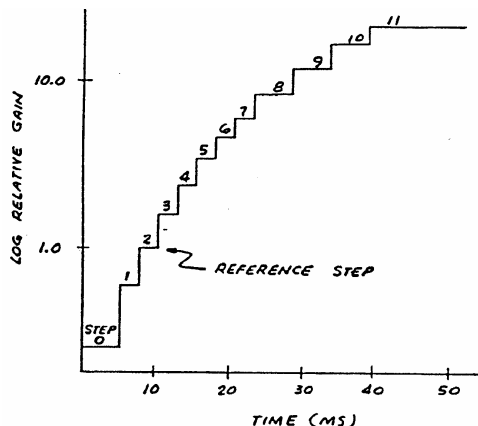


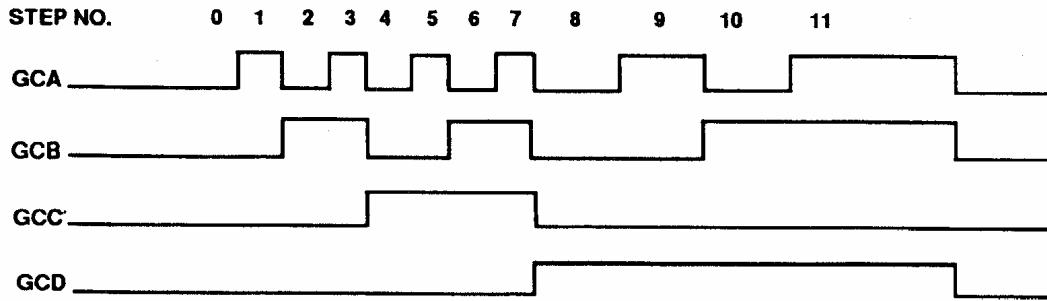
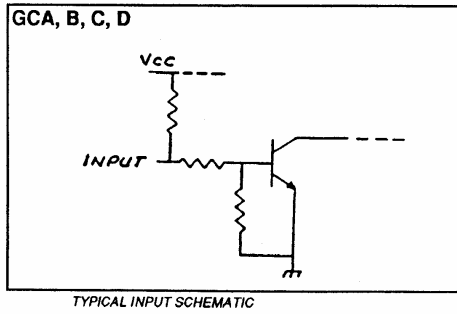
Detect Level vs Gain Step:

See test circuit on page 4. Detect level is measured by applying a 15 cycle burst of 49.4 kHz square waves just after the beginning of the gain step to be tested. The least burst amplitude which makes REC pin reach 1.2V is recorded as the "detect level". System "gain" is then inversely proportional to "detect level"

Step Number	GCA	GCB	GCC	GCD	Typical Relative Gain* (Peak to Peak)
0	0	0	0	0	
1	1	0	0	0	
2	0	1	0	0	
3	1	1	0	0	
4	0	0	1	0	
5	1	0	1	0	
6	0	1	1	0	
7	1	1	1	0	
8	0	0	0	1	
9	1	0	0	1	
10	0	1	0	1	
11	1	1	0	1	

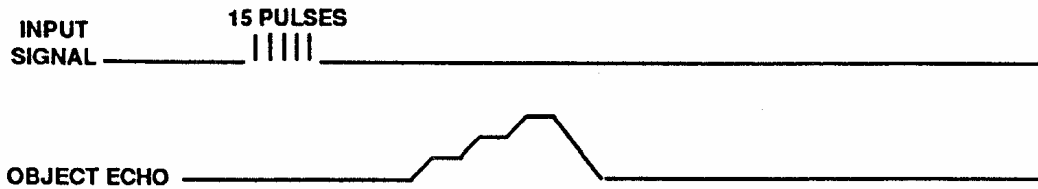
*Assumes nominal external components and typical IC





Typical Digital Gain Control Waveforms

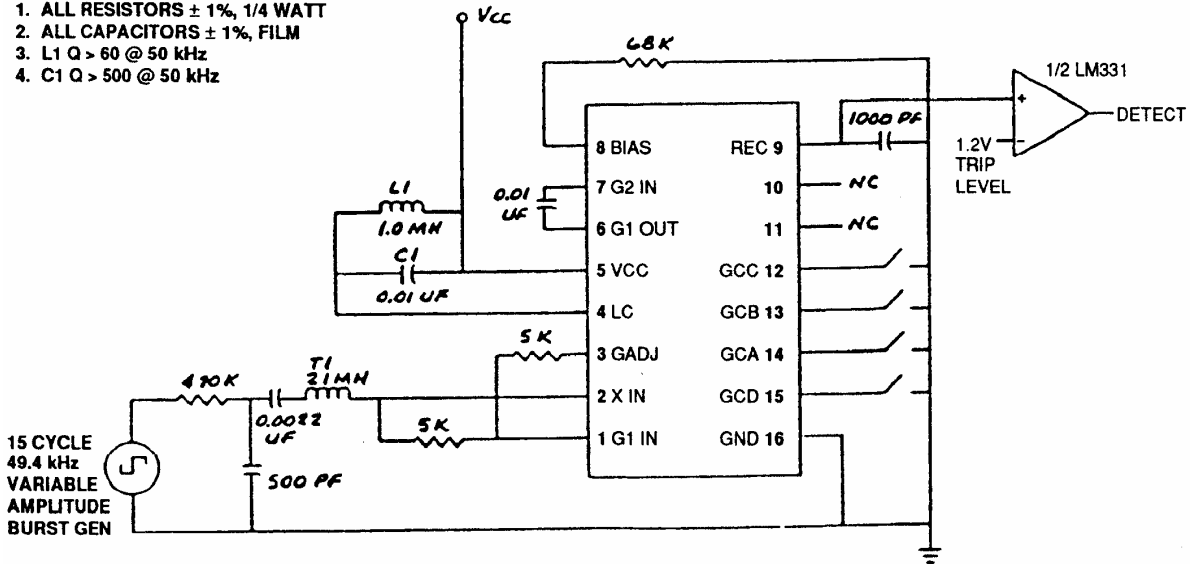
Note: The counters providing the gain signals must be synchronous



Example of the REC Pin Response to 15 Cycle Burst
(test circuit)

NOTES:

1. ALL RESISTORS $\pm 1\%$, 1/4 WATT
2. ALL CAPACITORS $\pm 1\%$, FILM
3. L1 Q > 60 @ 50 kHz
4. C1 Q > 500 @ 50 kHz



Direct Level Measurement Circuit

SUNSTAR实业集团是集研发、生产、工程、销售、代理经销、技术咨询、信息服务等为一体的高科技企业，是专业高科技电子产品生产厂家，是具有10多年历史的专业电子元器件供应商，是中国最早和最大的仓储式连锁规模经营大型综合电子零部件代理分销商之一，是一家专业代理和分销世界各大品牌IC芯片和电子元器件的连锁经营综合性国际公司。在香港、北京、深圳、上海、西安、成都等全国主要电子市场设有直属分公司和产品展示展销窗口门市部专卖店及代理分销商，已在全国范围内建成强大统一的供货和代理分销网络。我们专业代理经销、开发生产电子元器件、集成电路、传感器、微波光电元器件、工控机/DOC/DOM电子盘、专用电路、单片机开发、MCU/DSP/ARM/FPGA软件硬件、二极管、三极管、模块等，是您可靠的一站式现货配套供应商、方案提供商、部件功能模块开发配套商。专业以现代信息产业（计算机、通讯及传感器）三大支柱之一的传感器为主营业务，专业经营各类传感器的代理、销售生产、网络信息、科技图书资料及配套产品设计、工程开发。我们的专业网站——**中国传感器科技信息网（全球传感器数据库）www.SENSOR-IC.COM** 服务于全球高科技生产商及贸易商，为企业科技产品开发提供技术交流平台。欢迎各厂商互通有无、交换信息、交换链接、发布寻求代理信息。欢迎国外高科技传感器、变送器、执行器、自动控制产品厂商介绍产品到**中国**，共同开拓市场。本网站是关于各种传感器-变送器-仪器仪表及工业自动化大型专业网站，深入到工业控制、系统工程计 测计量、自动化、安防报警、消费电子等众多领域，把最新的传感器-变送器-仪器仪表买卖信息，最新技术供求，最新采购商，行业动态，发展方向，最新的技术应用和市场资讯及时的传递给广大科技开发、科学研究、产品设计人员。本网站已成功为石油、化工、电力、医药、生物、航空、航天、国防、能源、冶金、电子、工业、农业、交通、汽车、矿山、煤炭、纺织、信息、通信、IT、安防、环保、印刷、科研、气象、仪器仪表等领域从事科学研究、产品设计、开发、生产制造的科技人员、管理人员、和采购人员提供满意服务。 **我公司专业生产、代理、经销、销售各种传感器、变送器、敏感元器件、开关、执行器、仪器仪表、自动化控制系统：专门从事设计、生产、销售各种传感器、变送器、各种测控仪表、热工仪表、现场控制器、计算机控制系统、数据采集系统、各类环境监控系统、专用控制系统应用软件以及嵌入式系统开发及应用等工作。如热敏电阻、压敏电阻、温度传感器、温度变送器、湿度传感器、湿度变送器、气体传感器、气体变送器、压力传感器、压力变送、称重传感器、物（液）位传感器、物（液）位变送器、流量传感器、流量变送器、电流（压）传感器、溶氧传感器、霍尔传感器、图像传感器、超声波传感器、位移传感器、速度传感器、加速度传感器、扭距传感器、红外传感器、紫外传感器、火焰传感器、激光传感器、振动传感器、轴角传感器、光电传感器、接近传感器、干簧管传感器、继电器传感器、微型电泵、磁敏（阻）传感器、压力开关、接近开关、光电开关、色标传感器、光纤传感器、齿轮测速传感器、时间继电器、计数器、计米器、温控仪、固态继电器、调压模块、电磁铁、电压表、电流表等特殊传感器。同时承接传感器应用电路、产品设计和自动化工程项目。**

欢迎索取免费详细资料、设计指南和光盘；产品凡多，未能尽录，欢迎来电查询。

更多产品请看本公司产品专用销售网站：

中国传感器科技信息网：<http://www.sensor-ic.com/>工控安防网：<http://www.pc-ps.net/>

电子元器件网：<http://www.sunstare.com/>微波光电产品网：[HTTP://www.rfoe.net/](http://www.rfoe.net/)

消费电子产品网：<http://www.icasic.com/>军工产品网：<http://www.junpinic.com/>

实业科技产品网：<http://www.sunstars.cn/>传感器销售热线：

电话：0755-83607652 83376489 83376549 83370250 83370251

传真：0755-83376182 (0) 13902971329 MSN: SUNS8888@hotmail.com

邮编：518033 E-mail: szss20@163.com QQ: 195847376

技术支持：0755-83394033 13501568376