



SensComp, Inc.
36704 Commerce Rd.
Livonia, MI 48150 USA
Telephone: (734) 953-4783
Fax: (734) 953-4518
www.senscomp.com

Digital IC Chip TL851

SensComp Electronic Component – TL851 Digital Integrated Circuit Chip

Features

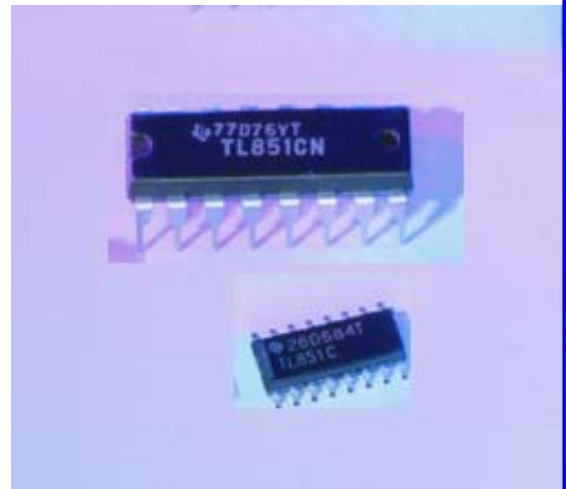
Economical Ranging Control when used with TL852 Analog IC
Operates With Single Supply Voltage.
Measurement Control Range from 6 inches to 35 feet.
Multiple Target Detection
Interfaces to Electrostatic and Piezoelectric Transducers.
Synchronous 4-bit Gain Control Output(12 steps).
Internal 1.2 volt Level Detector.
Accurate Clock Output For External Use.
TTL Compatible.

Part No.

PID# 614903LF – Digital IC Chip TL851CD – 16 pin SOIC
(SMT) package (RoHS Compliant)
PID# 614904LF – Digital IC Chip TL851CN – 16 pin N
(thru-hole) package (RoHS Compliant)

Description

Specifications



The TL851 is an economical digital I²L ranging control integrated circuit designed for use with the SensComp TL852 sonar ranging receiver integrated circuit. The TL851 is designed for distance measurement from 6 inches to 35 feet. The device has an internal oscillator that uses a low-cost external ceramic resonator. With a simple interface and a 420 kHz ceramic resonator, the device will drive a 50 kHz electrostatic transducer.

The device cycle begins when initiate (INIT) is taken to the high logic level. There must be at least 5 ms from initial power up (Vcc) to the first initiate signal in order for all the device internal latches to reset and for the ceramic resonator controlled oscillator to stabilize. The device will transmit a burst of 16 pulses each time INIT is taken high.

The oscillator output (OSC) is enabled by INIT. The oscillator frequency is the ceramic resonator frequency divided by 8.5 for the first 16 cycles (during transmit) and then the oscillator frequency changes to the ceramic resonator frequency divided by 4.5 for the remainder of the device cycle.

When used with an external 420 kHz ceramic resonator, the device internal blanking disables the receive input (REC) for 2.38 ms after initiate to exclude false receive inputs that may be caused by transducer ringing. The internal blanking feature also eliminates echoes from objects closer than 1.3 ft. from the transducer. If it is necessary to detect objects closer than 1.3 feet then the internal blanking may be shortened by taking the blanking inhibit (BINH) high, enabling the receive input. The blanking input (BLNK) may be used to disable the receive input and reset ECHO to a low logic level at any time during the device cycle for selective echo exclusion or for a multiple-echo mode of operation.

The device provides a synchronous 4-bit gain control output (12 steps) designed to control the gain of the TL852 sonar ranging receiver integrated circuit. The digital gain control waveforms are shown on page 4, with the nominal transition times from INIT listed in the Gain Control Output Table on page 3. The threshold of the internal receive level detector is 1.2 volts. The TL851 operates over a supply voltage range of 4.5 volts to 6.8 volts (+5 volts DC nominal voltage) and is characterized for operation from 0°C to 40°C.

For more information, visit our website: www.senscomp.com

1/04/07

Absolute Maximum Ratings over Operating Free-Air Temperature Range

Voltage at any pin with respect to ground.....	-0.5 to +7.0 VDC
Voltage at any pin with respect to V_{CC}	-7.0 to +0.5 VDC
Continuous power dissipation at (or below) 25° C free-air temperature (see note).....	1150 mW
Operating free-air temperature range	0° C to 70° C
Storage temperature range	-65° C to 150° C
Lead temperature 1.6 mm (1/16 inch) from case for 10 seconds.....	260° C

Note: For operation above 25° C, derate linearly at the rate of 9.2 mW/C

Recommended Operating Conditions

	MIN	MAX	UNIT
Supply Voltage, V_{CC}	4.5	6.8	V
High-level Input Voltage, V_{IH}	2.1		V
Low-level Input Voltage, V_{IL}		0.6	V
ECHO and OSC Output Voltage		6.8	V
Delay Time, Power Up to INIT High	5		ms
Operating Free-air Temperature	0	70	°C

Electrical Characteristics over Recommended Ranges of Supply Voltage and Operating Free-Air Temperature (typical values at $V_{CC} = 5VDC$ and $T_A = 25° C$)

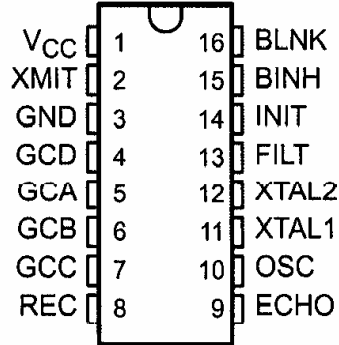
PARAMETER	TEST COND.	MIN	TYP	MAX	UNIT
Input Current	BLNK, BINH, INIT $V_I = 2.1 V$			1	mA
High-level Output Current, I_{OH}	ECHO, OSC, GC* $V_{OH} = 5.5V$			100	μA
Low-level Output Voltage, V_{OL}	ECHO, OSC, GC* $I_{OL} = 1.6 mA$			0.4	V
On-state Output Current	XMIT output $V_O = 1V$		-140		mA
Internal Blanking Interval			2.38†		ms
Frequency During 16-pulse	OSC output		49.4†		kHz
Transmit Period	XMIT output		49.4†		kHz
Frequency After 16-pulse	OSC output		93.3†		kHz
Transmit Period	XMIT output		0		kHz
Supply Current, I_{CC}	During transmit period			260	mA
	After transmit period			55	mA

† These typical values apply for a 420 kHz ceramic resonator

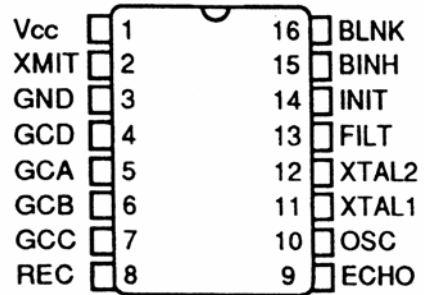
Pinout Description

Pin	Name	Description	Pin	Name	Description
1	V_{CC}	Positive Supply	16	BLNK	Blanking
2	XMIT	Transmit	15	BINH	Blanking Inhibit
3	GND	Circuit Ground	14	INIT	Ranging Initiate
4	GCD	MSB Digital Gain Control	13	FIL	V_{CC} Filter
5	GCA	LSB Digital Gain Control	12	XTAL1	Crystal Input
6	GCB	Digital Gain Control	11	XTAL2	Crystal Input
7	GCC	Digital Gain Control	10	OSC	Oscillator Clock Output
8	REC	Receive Input (analog level)	9	ECHO	Echo Detected (digital level)

**N PACKAGE
(TOP VIEW)**



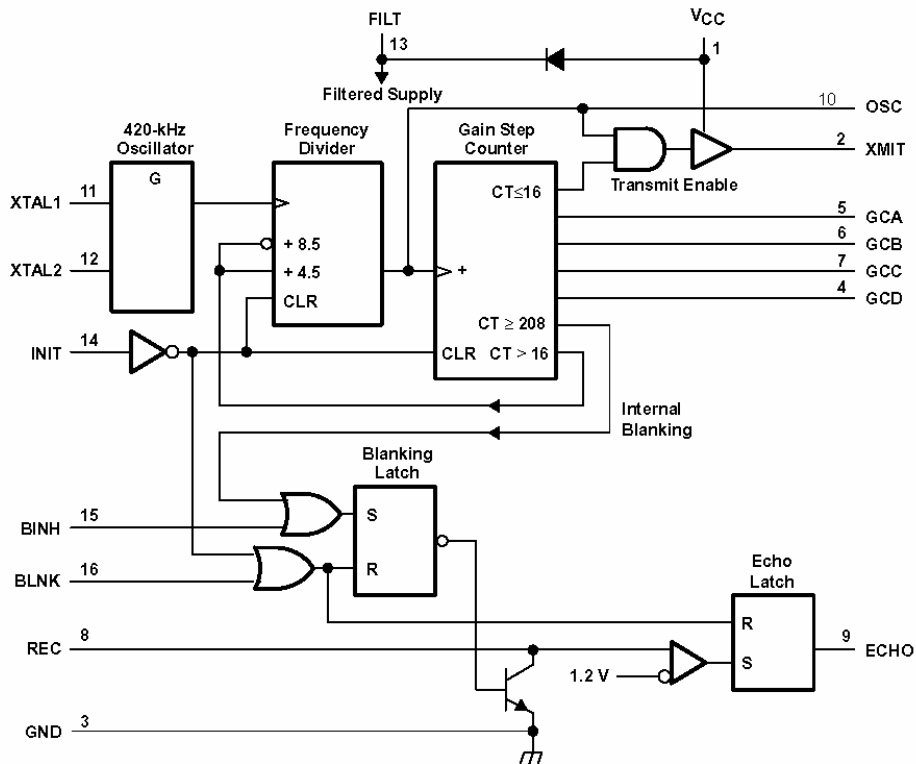
**SOIC PACKAGE
(Top View)**



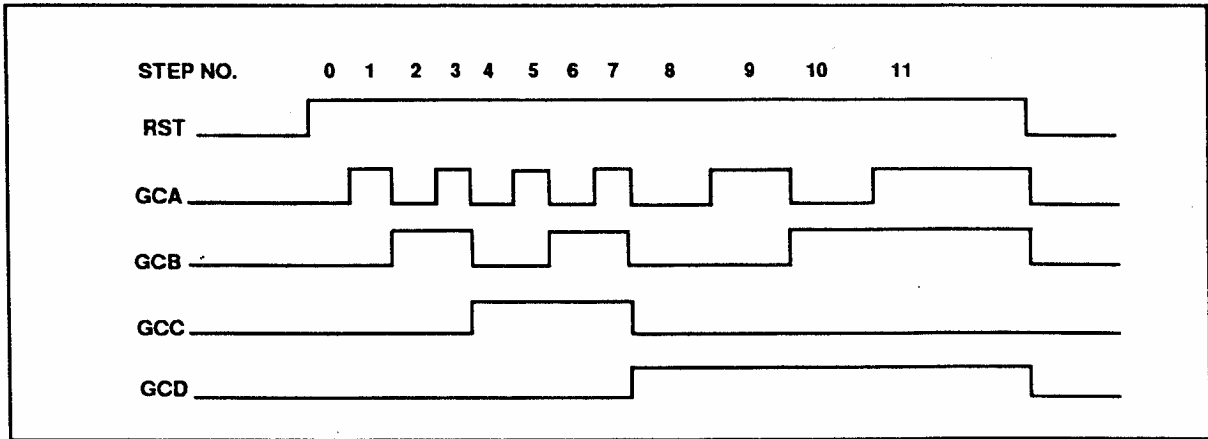
GAIN CONTROL OUTPUT TABLE

STEP NUMBER	GCD	GCC	GCB	GCA	TIME (ms) FROM INITIATE*
0	L	L	L	L	2.38 ms
1	L	L	L	H	5.12 ms
2	L	L	H	L	7.87 ms
3	L	L	H	H	10.61 ms
4	L	H	L	L	13.35 ms
5	L	H	L	H	16.09 ms
6	L	H	H	L	18.84 ms
7	L	H	H	H	21.58 ms
8	H	L	L	L	27.07 ms
9	H	L	L	H	32.55 ms
10	H	L	H	L	38.04 ms
11	H	L	H	H	INIT ↓

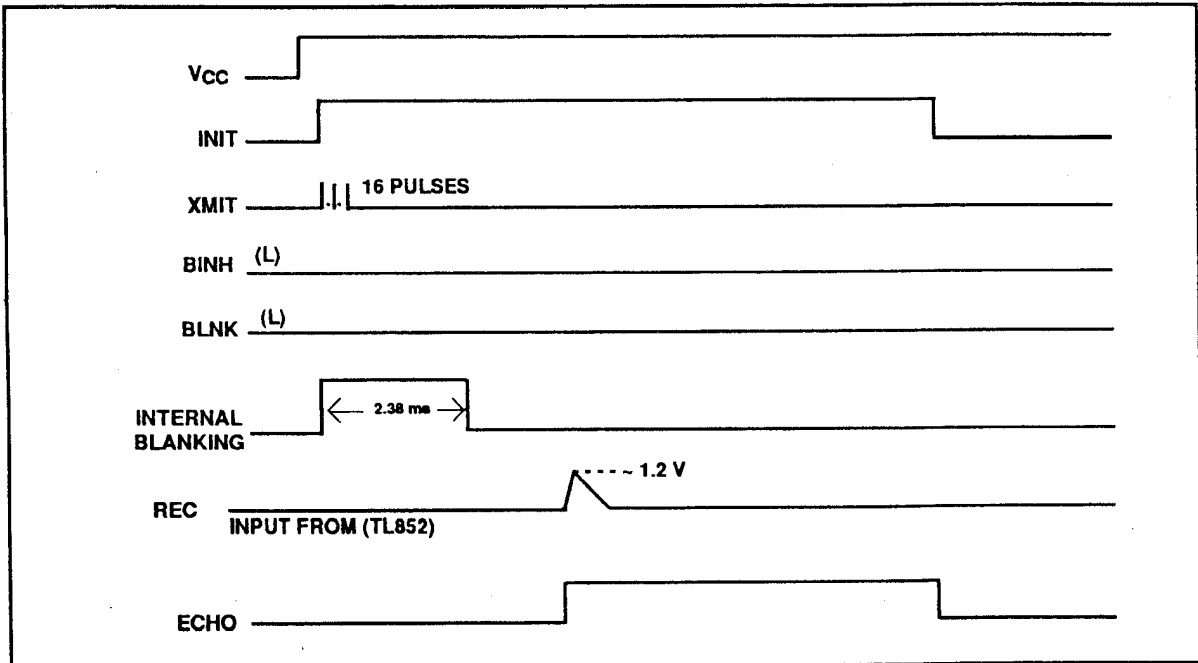
*This is the time to the end of the indicated step and assumes a nominal 420 kHz ceramic resonator.



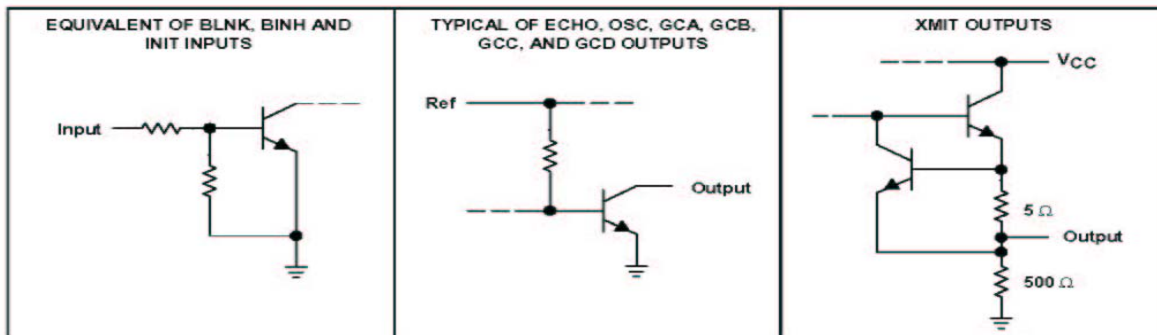
FUNCTIONAL BLOCK DIAGRAM



Digital Gain Control Waveforms



Example of a Single-Echo-Mode Cycle when used with the TL852 Receiver and 420 kHz Ceramic Resonator



Typical Inputs and Outputs

SUNSTAR实业集团是集研发、生产、工程、销售、代理经销、技术咨询、信息服务等为一体的高科技企业，是专业高科技电子产品生产厂家，是具有10多年历史的专业电子元器件供应商，是中国最早和最大的仓储式连锁规模经营大型综合电子零部件代理分销商之一，是一家专业代理和分销世界各大品牌IC芯片和电子元器件的连锁经营综合性国际公司。在香港、北京、深圳、上海、西安、成都等全国主要电子市场设有直属分公司和产品展示展销窗口门市部专卖店及代理分销商，已在全国范围内建成强大统一的供货和代理分销网络。我们专业代理经销、开发生产电子元器件、集成电路、传感器、微波光电元器件、工控机/DOC/DOM电子盘、专用电路、单片机开发、MCU/DSP/ARM/FPGA软件硬件、二极管、三极管、模块等，是您可靠的一站式现货配套供应商、方案提供商、部件功能模块开发配套商。专业以现代信息产业（计算机、通讯及传感器）三大支柱之一的传感器为主营业务，专业经营各类传感器的代理、销售生产、网络信息、科技图书资料及配套产品设计、工程开发。我们的专业网站——**中国传感器科技信息网（全球传感器数据库）www.SENSOR-IC.COM** 服务于全球高科技生产商及贸易商，为企业科技产品开发提供技术交流平台。欢迎各厂商互通有无、交换信息、交换链接、发布寻求代理信息。欢迎国外高科技传感器、变送器、执行器、自动控制产品厂商介绍产品到**中国**，共同开拓市场。本网站是关于各种传感器-变送器-仪器仪表及工业自动化大型专业网站，深入到工业控制、系统工程计 测计量、自动化、安防报警、消费电子等众多领域，把最新的传感器-变送器-仪器仪表买卖信息，最新技术供求，最新采购商，行业动态，发展方向，最新的技术应用和市场资讯及时的传递给广大科技开发、科学研究、产品设计人员。本网站已成功为石油、化工、电力、医药、生物、航空、航天、国防、能源、冶金、电子、工业、农业、交通、汽车、矿山、煤炭、纺织、信息、通信、IT、安防、环保、印刷、科研、气象、仪器仪表等领域从事科学研究、产品设计、开发、生产制造的科技人员、管理人员、和采购人员提供满意服务。 **我公司专业生产、代理、经销、销售各种传感器、变送器、敏感元器件、开关、执行器、仪器仪表、自动化控制系统：专门从事设计、生产、销售各种传感器、变送器、各种测控仪表、热工仪表、现场控制器、计算机控制系统、数据采集系统、各类环境监控系统、专用控制系统应用软件以及嵌入式系统开发及应用等工作。如热敏电阻、压敏电阻、温度传感器、温度变送器、湿度传感器、湿度变送器、气体传感器、气体变送器、压力传感器、压力变送、称重传感器、物（液）位传感器、物（液）位变送器、流量传感器、流量变送器、电流（压）传感器、溶氧传感器、霍尔传感器、图像传感器、超声波传感器、位移传感器、速度传感器、加速度传感器、扭距传感器、红外传感器、紫外传感器、火焰传感器、激光传感器、振动传感器、轴角传感器、光电传感器、接近传感器、簧管传感器、继电器传感器、微型电泵、磁敏（阻）传感器、压力开关、接近开关、光电开关、色标传感器、光纤传感器、齿轮测速传感器、时间继电器、计数器、计米器、温控仪、固态继电器、调压模块、电磁铁、电压表、电流表等特殊传感器。同时承接传感器应用电路、产品设计和自动化工程项目。**

欢迎索取免费详细资料、设计指南和光盘；产品凡多，未能尽录，欢迎来电查询。

更多产品请看本公司产品专用销售网站：

中国传感器科技信息网：<http://www.sensor-ic.com/>工控安防网：<http://www.pc-ps.net/>

电子元器件网：<http://www.sunstare.com/>微波光电产品网：[HTTP://www.rfoe.net/](http://www.rfoe.net/)

消费电子产品网：<http://www.icasic.com/>军工产品网：<http://www.junpinic.com/>

实业科技产品网：<http://www.sunstars.cn/>传感器销售热线：

电话：0755-83607652 83376489 83376549 83370250 83370251

传真：0755-83376182 (0) 13902971329 MSN: SUNS8888@hotmail.com

邮编：518033 E-mail:szss20@163.com QQ: 195847376

技术支持：0755-83394033 13501568376