

**SUNSTAR商斯达实业集团**是集研发、生产、工程、销售、代理经销、技术咨询、信息服务等为一体的高科技企业，是专业高科技电子产品生产厂家，是具有10多年历史的专业电子元器件供应商，是中国最早和最大的仓储式连锁规模经营大型综合电子零部件代理分销商之一，是一家专业代理和分销世界各大品牌IC芯片和电子元器件的连锁经营综合性国际公司。在香港、北京、深圳、上海、西安、成都等全国主要电子市场设有直属分公司和产品展示展销窗口门市部专卖店及代理分销商，已在全国范围内建成强大统一的供货和代理分销网络。我们专业代理经销、开发生产电子元器件、集成电路、传感器、微波光电元器件、工控机/DOC/DOM电子盘、专用电路、单片机开发、MCU/DSP/ARM/FPGA软件硬件、二极管、三极管、模块等，是您可靠的一站式现货配套供应商、方案提供商、部件功能模块开发配套商。**专业以现代信息产业（计算机、通讯及传感器）三大支柱之一的传感器为主营业务，专业经营各类传感器的代理、销售生产、网络信息、科技图书资料及配套产品设计、工程开发。我们的专业网站——中国传感器科技信息网（全球传感器数据库）www.SENSOR-IC.COM 服务于全球高科技生产商及贸易商，为企业科技产品开发提供技术交流平台。欢迎各厂商互通有无、交换信息、交换链接、发布寻求代理信息。欢迎国外高科技传感器、变送器、执行器、自动控制产品厂商介绍产品到中国，共同开拓市场。**本网站是关于各种传感器-变送器-仪器仪表及工业自动化大型专业网站，深入到工业控制、系统工程计 测量、自动化、安防报警、消费电子等众多领域，把最新的传感器-变送器-仪器仪表买卖信息，最新技术供求，最新采购商，行业动态，发展方向，最新的技术应用和市场资讯及时的传递给广大科技开发、科学研究、产品设计人员。本网站已成功为石油、化工、电力、医药、生物、航空、航天、国防、能源、冶金、电子、工业、农业、交通、汽车、矿山、煤炭、纺织、信息、通信、IT、安防、环保、印刷、科研、气象、仪器仪表等领域从事科学研究、产品设计、开发、生产制造的科技人员、管理人员、和采购人员提供满意服务。**我公司专业生产、代理、经销、销售各种传感器、变送器、敏感元器件、开关、执行器、仪器仪表、自动化控制系统：专门从事设计、生产、销售各种传感器、变送器、各种测控仪表、热工仪表、现场控制器、计算机控制系统、数据采集系统、各类环境监控系统、专用控制系统应用软件以及嵌入式系统开发及应用等工作。如热敏电阻、压敏电阻、温度传感器、温度变送器、湿度传感器、湿度变送器、气体传感器、气体变送器、压力传感器、压力变送、称重传感器、物（液）位传感器、物（液）位变送器、流量传感器、流量变送器、电流（压）传感器、溶氧传感器、霍尔传感器、图像传感器、超声波传感器、位移传感器、速度传感器、加速度传感器、扭距传感器、红外传感器、紫外传感器、火焰传感器、激光传感器、振动传感器、轴角传感器、光电传感器、接近传感器、干簧管传感器、继电器传感器、微型电泵、磁敏（阻）传感器、压力开关、接近开关、光电开关、色标传感器、光纤传感器、齿轮测速传感器、时间继电器、计数器、计米器、温控仪、固态继电器、调压模块、电磁铁、电压表、电流表等特殊传感器。同时承接传感器应用电路、产品设计和自动化工程项目。**

欢迎索取免费详细资料、设计指南和光盘；产品凡多，未能尽录，欢迎来电查询。

更多产品请看本公司产品专用销售网站：

商斯达中国传感器科技信息网：<http://www.sensor-ic.com/>

商斯达工控安防网：<http://www.pc-ps.net/>

商斯达电子元器件网：<http://www.sunstare.com/>

商斯达微波光电产品网：[HTTP://www.rfoe.net/](http://www.rfoe.net/)

商斯达消费电子产品网：<http://www.icasic.com/>

商斯达军工产品网：<http://www.junpinic.com/>

商斯达实业科技产品网：<http://www.sunstars.cn/>传感器销售热线：

地址：深圳市福田区福华路福庆街鸿图大厦1602室

电话：0755-83607652 83376489 83376549 83370250 83370251 82500323

传真：0755-83376182 (0) 13902971329 MSN: [SUNS888@hotmail.com](mailto:SUNS888@hotmail.com)

邮编：518033 E-mail: [szss20@163.com](mailto:szss20@163.com) QQ: 195847376

深圳赛格展销部：深圳华强北路赛格电子市场2583号 电话：0755-83665529

技术支持：0755-83394033 13501568376

# Fluid Level, Proximity and Motion Sensors

## Standex Electronics



# Proximity and Motion Sensors

SUNSTAR 传感与控制 <http://www.sensor-ic.com/> TEL:0755-83376549 FAX:0755-83376182 E-MAIL:szss20@163.com

Standex proximity and motion sensors are widely applied in automotive applications, domestic appliances, process control equipment, telecommunications equipment, office equipment, security systems, construction equipment and a host of additional applications. Standex normally uses magnetic Reed switch technology; however, custom designs include use of Hall effect and variable reluctance technologies as appropriate for the specific application.

## Fluid Level Sensors

Standex fluid level sensors are applied in automobiles, trucks, heavy construction equipment and specialized industrial applications. In automotive applications they are used to monitor the level of fuel, windshield washer fluid, coolant, brake fluid, oil and DI water. Standex fluid level sensors normally use magnetic/Reed switch sensing technology, utilizing floats equipped with a permanent magnet source. Standex liquid level sensors also use Hall effect, capacitive and conductive technologies as appropriate for the specific application.

pages

Magnetic Proximity & Motion Sensors ..... 3 - 7

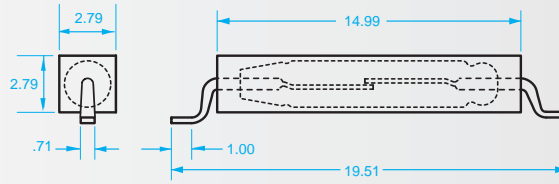
Fluid Level Sensors - Magnetic Technology ..... 8 - 11

Fluid Level Sensors - Conductive Technology ..... 12 - 13

Custom Proximity and Fluid Level Sensors/Alternative Technologies ..... 14 - 15

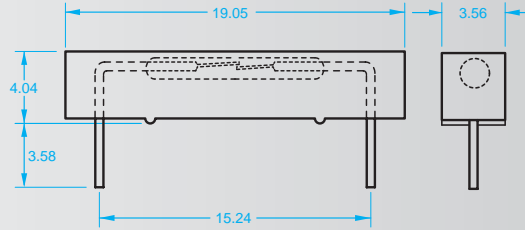
## R12476 Series

- Surface mounted Reed switch
- Switch rated 0.5A/100V/10VA max
- Switch sensitivity from 10 to 30 AT
- Form A (normally open) operation
- Insert molded



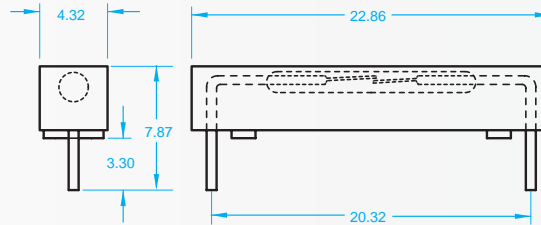
## R12464 Series

- PC mounted Reed switch
- Switch rated 0.5A/100V/10VA max
- Switch sensitivity from 10 to 30 AT
- Form A (normally open) operation
- Insert molded



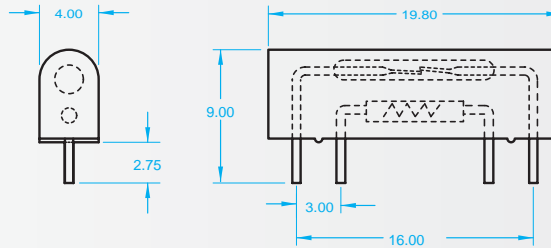
## R12459 Series

- PC mounted Reed switch
- Switch rated 0.5A/100V/10VA max
- Switch sensitivity from 10 to 30 AT
- Form A (normally open) operation
- Insert molded



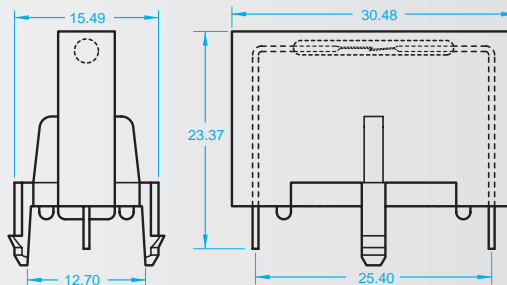
## KSR Series

- PC mounted Reed switch
- Switch rated 0.5A/100V/10VA max
- Form A (normally open) operation
- Insert molded
- Integral resistor



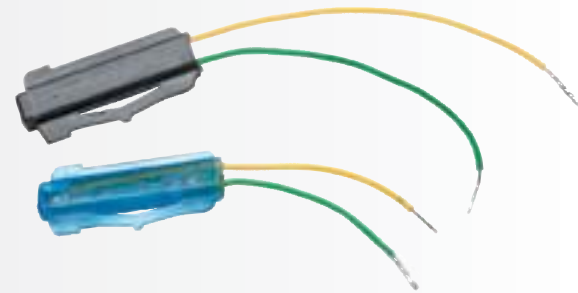
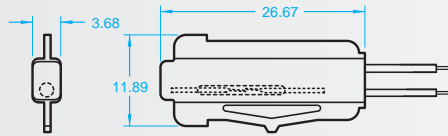
## R11808 Series

- PC mounted Reed switch
- Switch rated 1.5A/200V/50VA max
- Form A (normally open) operation
- Switch sensitivity 20 to 40 AT
- Snap lock mounting



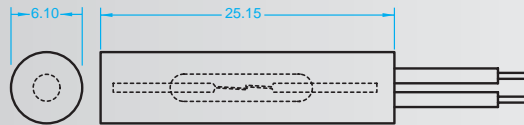
## R12303 Series

- Miniature snap lock mounting
- Switch rated 0.5/100V/10VA max
- Switch sensitivity 10 to 30 AT
- Form A (normally open) operation
- Wire length as required



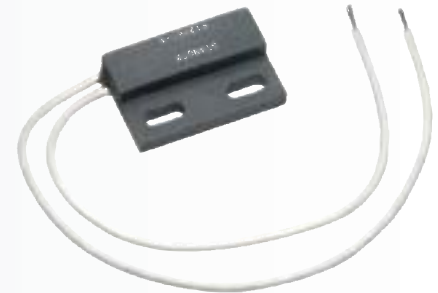
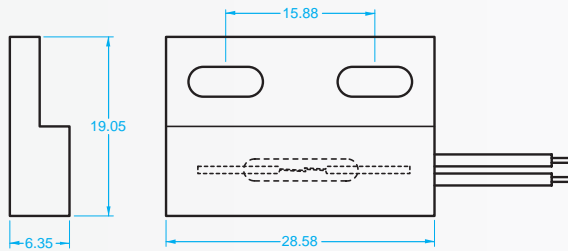
## R12457 Series

- Cylinder design
- Switch rated 0.5A/100V/10VA max
- Switch sensitivity 10 to 30 AT
- Form A (normally open) operation
- Wire length as required



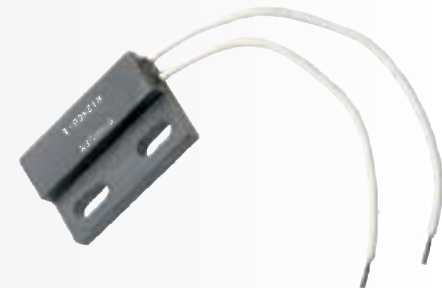
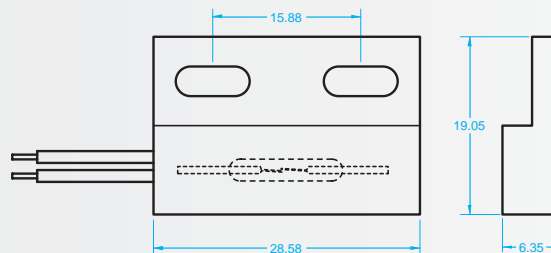
## R12465 Series

- General purpose proximity sensor
- Switch rated 0.5A/100V/10VA max
- Form A (normally open) operation
- Switch sensitivity 10 to 30 AT
- Operates with B124172 and B12473
- Max operate distance of 0.6"



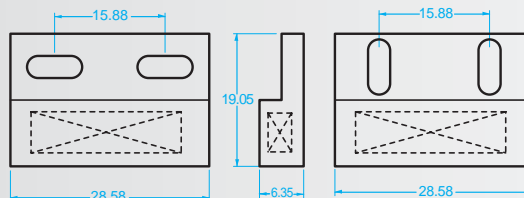
## R12466 Series

- General purpose proximity sensor
- Switch rated 0.5A/100V/10VA max
- Form A (normally open) operation
- Switch sensitivity 10 to 30 AT
- Operates with B124172 and B12473
- Max operate distance of 0.6"



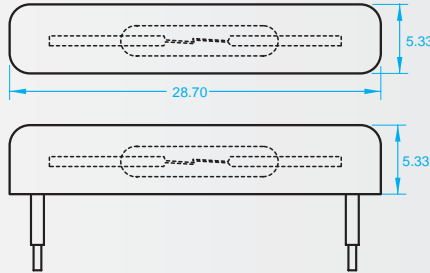
## B12472 and B12473 Actuators

- Operate with P/N's R12465 and R12466
- B12472 provides adjustment perpendicular to length axis
- B12473 provides adjustment along length axis



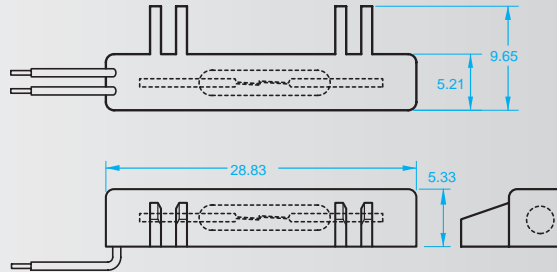
## R11883 Series

- Miniature proximity sensor
- Switch rated 0.5A/100V/10VA max
- Form A (normally open) operation
- Switch sensitivity 10 to 30 AT
- Wire length as required



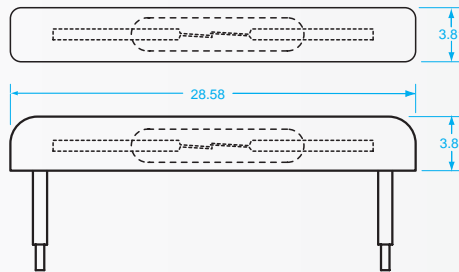
## R11883A Series

- Miniature proximity sensor
- Switch rated 0.5A/100V/10VA max
- Form A (normally open) operation
- Switch sensitivity 10 to 30 AT
- Wire length as required



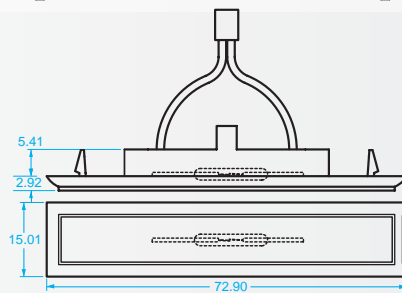
## R12075 Series

- Miniature proximity sensor
- Switch rated 0.5A/100V/10VA max
- Form A (normally open) operation
- Switch sensitivity 10 to 30 AT
- Wire length as required



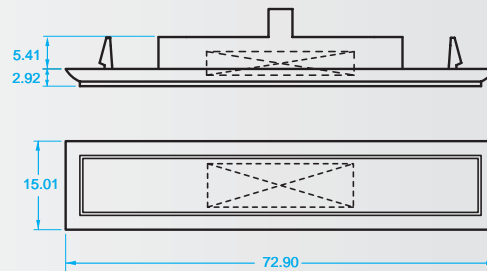
## R12391 Series

- Flush mount proximity sensor
- Snap lock mounting
- Switch rated 0.5A/100V/10VA max
- Form A (normally open) operation
- Switch sensitivity 10 to 30 AT
- Wire length as required



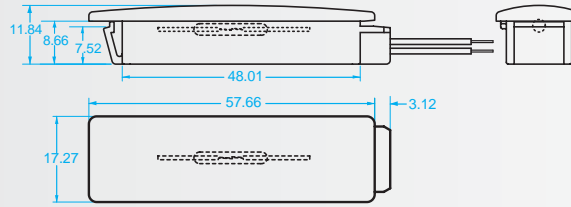
## B12392 Series Actuator

- Flush mount/snap lock mounting
- Operates with R12391 series



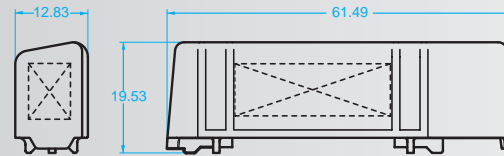
## R12444 Series

- Flush mount proximity sensor
- Snap lock mounting
- Switch rated 1.5A/200V/50VA max
- Switch sensitivity 20 to 40 AT
- Form A (normally open) operation
- Wire length and termination as required
- Available with 300V/70VA switch



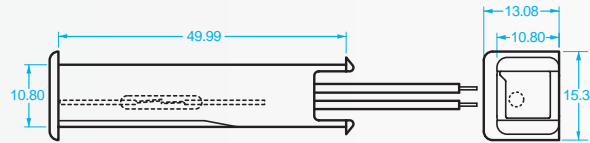
## B12427 Series Actuator

- Operates with R12444 proximity sensor
- Screw mounting
- Ceramic 8 magnet



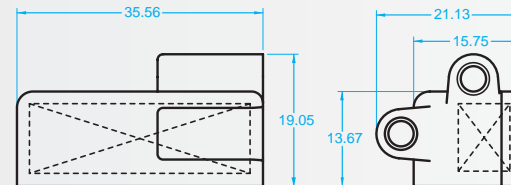
## R12454 Series

- Custom proximity sensor
- Snap locking feature
- Switch rated 1.5A/200V/50VA max
- Switch sensitivity 20 to 40 AT
- Form A (normally open) operation
- Wire length and termination as required
- Available with 300V/70VA switch



## R12455 Series Actuator

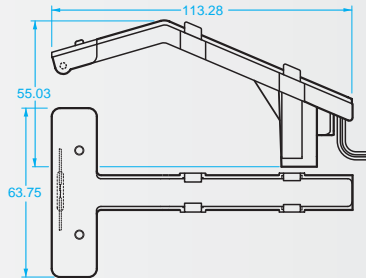
- Operates with R12454 proximity sensor
- Screw down mounting



## Magnetic Proximity & Motion Sensors - Reed Switch Technology

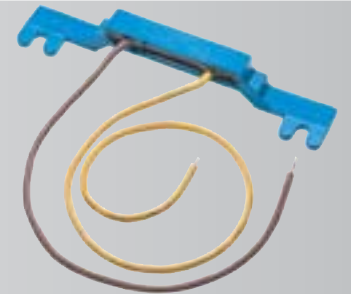
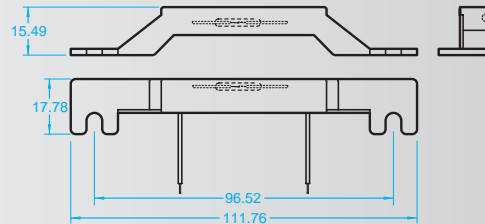
## R12199 Series

- Custom appliance rotation sensor
- Switch rated 0.5A/200V/10VA max
- Form A (normally open) operation
- Switch sensitivity 7 to 20 AT
- Max. operating distance 2"
- Wire length and termination as required



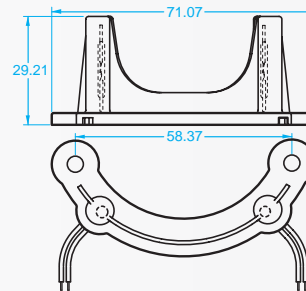
## R11737 Series

- Appliance lamp switch assembly
- Switch rated 1.5A/200V/50VA max
- Form B (normally closed) operation
- Switch sensitivity 20 to 40 AT
- Wire length and termination as required
- Available with 300V/70VA switch



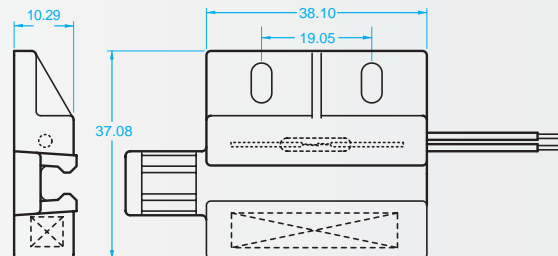
## R12355 Series

- Two switch tachometer
- Switch rated 0.5A/200V/10VA max
- Form A (normally open) operation
- Switch sensitivity 10 to 30 AT
- Wire length and termination as required



## R12320 Series

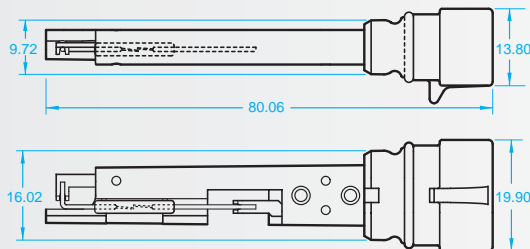
- Safety switch
- Switch rated 1.5A/200V/50VA max
- Form B (normally closed) operation
- Switch sensitivity 20 to 40 AT
- Wire length and termination as required
- Available with 300V/70VA switch





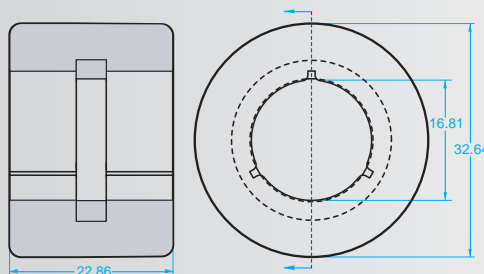
## R12468 Series

- External sensor for injection molded bottles
- Form A or Form B operation with separate float
- Bottom mount with o-ring seal
- Switch rated 1.5A/200V/50VA max
- Mates with Packard P/N 12052641



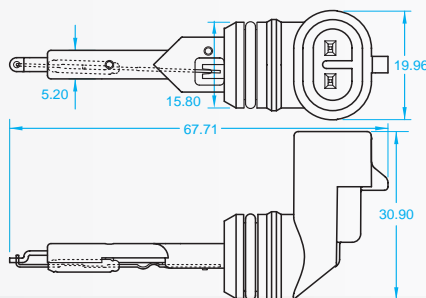
## B12469 Series

- Float/magnet assembly operates with R12468 sensor assembly
- Float locates in the bottle assembly
- Foamed PP
- Specific gravity per application



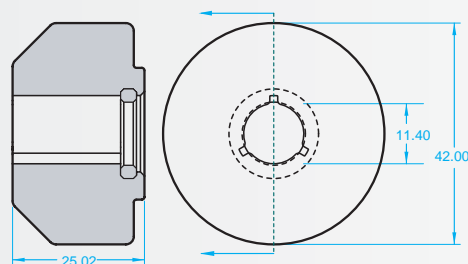
## R12481 Series

- External sensor for injection molded bottles
- Form A or Form B operation with separate float
- Bottom mount with o-ring seal
- Switch rated 0.5A/100V/10VA max
- Mates with Packard P/N 12052641



## B12482 Series

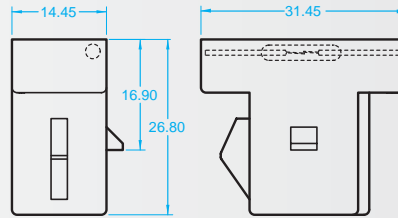
- Float/magnet assembly operates with R12481 sensor assembly
- Float locates in bottle assembly
- Foamed PP
- Specific gravity per application



## Fluid Level Sensors - Magnetic Technology

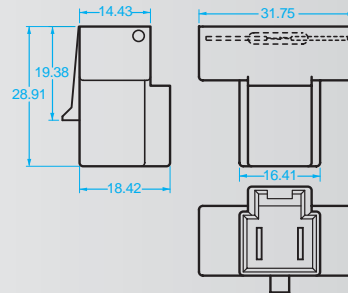
## R11774 Series

- External sensor for injection molded bottles
- Form A (normally open) operation with separate float
- Switch rated 0.5A/100V/10VA max
- Snap lock mounting
- Integral connector



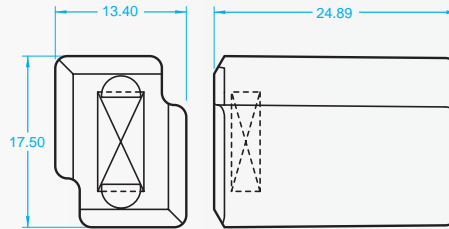
## R12180 Series

- External sensor for injection molded bottles
- Form A (normally open) operation with separate float
- Switch rated 0.5A/100V/10VA max
- Snap lock mounting
- Integral connector



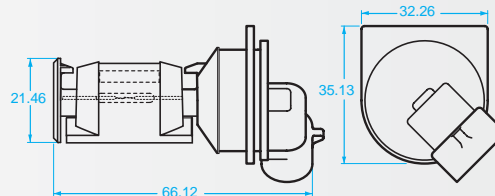
## B12450 Series Float

- Float/magnet assembly operates with R11774 and R12180 series sensors
- Float locates in bottle assembly
- Foamed PP
- Operates with fluid SG at 0.79 min



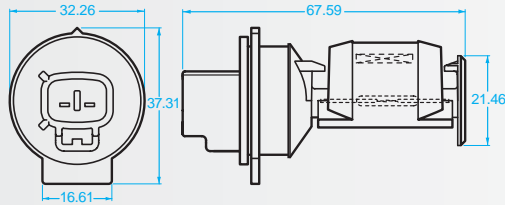
## R12431 Series

- For blow or injection molded bottles
- Side mount design uses separate seal grommet
- Form A (normally open) and Form B (normally closed) operation
- Switch rated 0.5A/100V/10VA max
- Internal snubber resistor
- Connector meets requirements of Packard Taxi Drawing 12162289



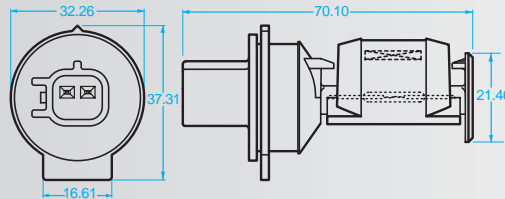
## R12449 Series

- For blow or injection molded bottles
- Side mount design uses separate seal grommet
- Form A (normally open) and Form B (normally closed) operation
- Switch rated 0.5A/100V/10VA max
- Internal snubber resistor
- Mates with Toyota connector P/N 90980-11068



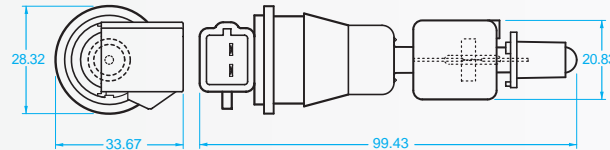
## R12456 Series

- For blow or injection molded bottles
- Side mount design uses separate seal grommet
- Form A (normally open) and Form B (normally closed) operation
- Switch rated 0.5A/100V/10VA max
- Internal snubber resistor
- Mates with Yazaki 7283-6434-40



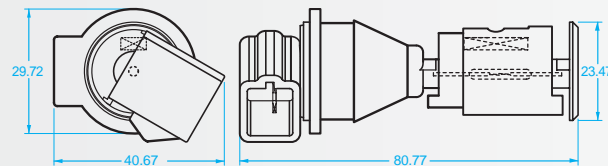
## R12347 Series

- For blow or injection molded bottles
- Bottom mount design
- Form A (normally open) and Form B (normally closed) operation
- Switch rated 0.5A/100V/10VA max
- Internal snubber resistor
- Mates with Ford E57B14A464AA



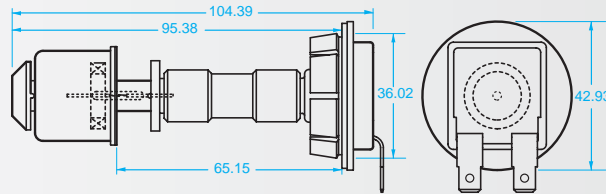
## R12349 Series

- For blow or injection molded bottles
- Side mount design
- Form A (normally open) and Form B (normally closed) operation
- Switch rated 0.5A/100V/10VA max
- Internal snubber resistor
- Mates with Ford E57B14A464AA



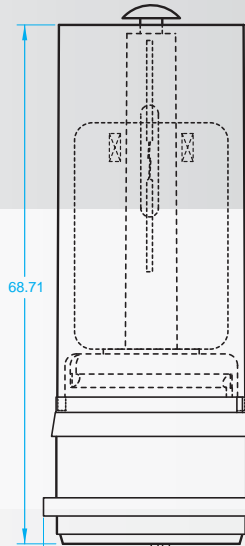
## R12072 Series

- For blow or injection molded bottles
- Top mount/snap in design
- Form A (normally open) operation
- Switch rated 1.5A/200V/50VA max
- Adjustable sensing point up to 18 inches from top of bottle
- Standard termination-0.25 inch open spade



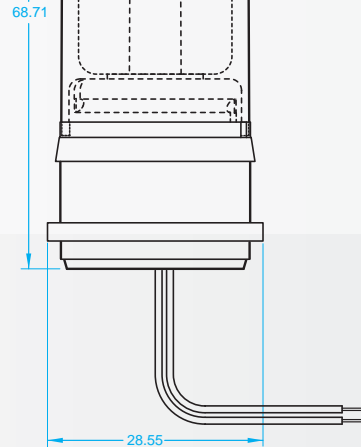
## R12372 Series

- For blow or injection molded bottles
- Indication delay feature
- Bottom mount design uses separate seal grommet
- Form A (normally open) and Form B (normally closed) operation
- Switch rated 1.5A/200V/50VA max



## R12421 Series

- For blow or injection molded bottles
- Indication delay feature
- Bottom mount design uses separate seal grommet
- Form A (normally open) and Form B (normally closed) operation
- Switch rated 1.5A/200V/50VA max



## R12406 Series

- For blow or injection molded bottles
- Indication delay feature
- Bottom mount design with power harness
- Form A (normally open) and Form B (normally closed) operation
- Switch rated 1.5A/200V/50VA max



## Fluid Level Sensors - Magnetic Technology

## Standex Conductivity Sensors

Standex LS100, 200 and 300 series conductivity based fluid level sensors represent a comprehensive line of fluid level sensors that can be applied in most any application where conductivity based sensors are appropriate. From “bare bones” LS100 series sensors which must be driven from external electronics to “turn key” LS300 series sensors that have a switched output, Standex sensors are engineered as needed to meet customer requirements.

LS200 and 300 series sensors are equipped with a Standex patented “bias ring”, designed to eliminate the issues of sensitivity changes that can occur due to a buildup of conductive material around the sensor. This buildup of conductive material can cause substantial shifts in sensor sensitivity. The Standex “bias ring” is charged with an opposing electrical polarity and eliminates secondary conductive paths, which can cause “false full” indications.

Typical applications include monitoring of soap levels in clothes washers and sensing food syrup levels in dispensing equipment. The sensing of basement flood water or the backup of fixed or mobile septic systems are all appropriate applications due to the ability of this technology to operate in conductive fluids with high particulate matter and large amounts of residue. These sensors are also appropriate for automotive applications for monitoring windshield washer fluid and coolant levels.

Standex conductivity sensors can be mounted with a seal grommet, spin plate bonded onto plastic containers, or screw threaded to the container. Conductivity sensors may be operated by a DC Voltage, DC Current or user electronics.

### LS100 Series Conductivity Fluid Level Sensor is a passive device with no internal electronics

- Driven from external electronics
- Suitable for most conductive fluids with minimal particulate matter
- May be operated from user’s electronics in a “pulsing” mode to reduce electrolysis
- May be operated with a bipolar pulsing current from user electronics, eliminating electrolysis



## Fluid Level Sensors - Conductive Technology

## LS200 Series Conductive Fluid Level Sensors with False Full Protection and current level shift to indicate fluid level

- Available as a two-wire device
- Capable of substantial miniaturization
- Equipped with Standex patented "bias ring" concept
- Suitable for most conductive fluids
- Suitable in fluids with substantial particulate matter
- Operated by a DC current pulse supplied from user's electror current draw indicates fluid level
- Optional LED available for local fluid level indication



## LS300 Series Conductive Fluid Level Sensors with Sensitivity False Full Protection

- Full electronics and substantial probe miniaturization
- Equipped with Standex patented "bias ring" concept
- Available as a three-wire device
- Suitable for most conductive fluids
- Suitable in fluids with substantial particulate matter
- Internal electronics used to eliminate electrolysis
- Input is 9V to 30 V DC
- Provided with a switched output; 30 volt open collector sync, TTL or CMOS
- Optional LED available for local fluid level indication



## **Fluid Level Sensors - Conductive Technology**

Standex Electronics is a broad-based supplier of fluid level, proximity and motion sensors. While the majority of current applications use magnetic Reed switch based and conductivity based technology, Standex sensor designs include inductive, Hall chip (magnetic), magneto-resistive and capacitive technologies. Standex uses these technologies and other alternative technologies as appropriate for specific applications.

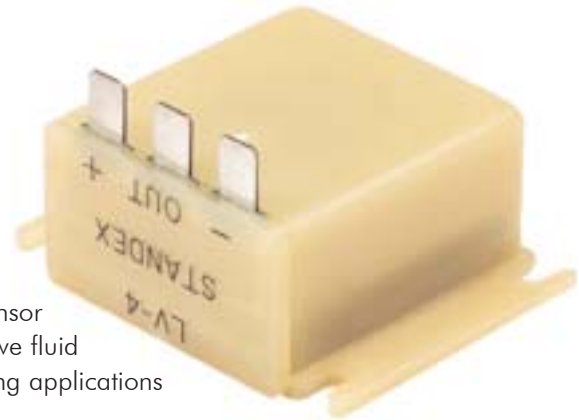
Standex fluid level sensors are widely used in automotive, heavy truck and construction equipment applications as well as a wide range of industrial and commercial applications for monitoring the levels of many different fluids, including coolant, brake fluid, windshield washer fluid, oil, potable water, DI water, and waste water.

Standex fluid level sensors are designed for harsh environments such as "under-hood" applications.

Standex proximity and motion sensors are mainly applied in heavy truck and construction equipment applications as well as home appliance, office equipment and security applications.



LS800 series fluid level sensor with operation verification for safety critical fluid level applications



Patented Capacitive Sensor for non-intrusive fluid level monitoring applications

## Custom Sensors & Alternative Technologies

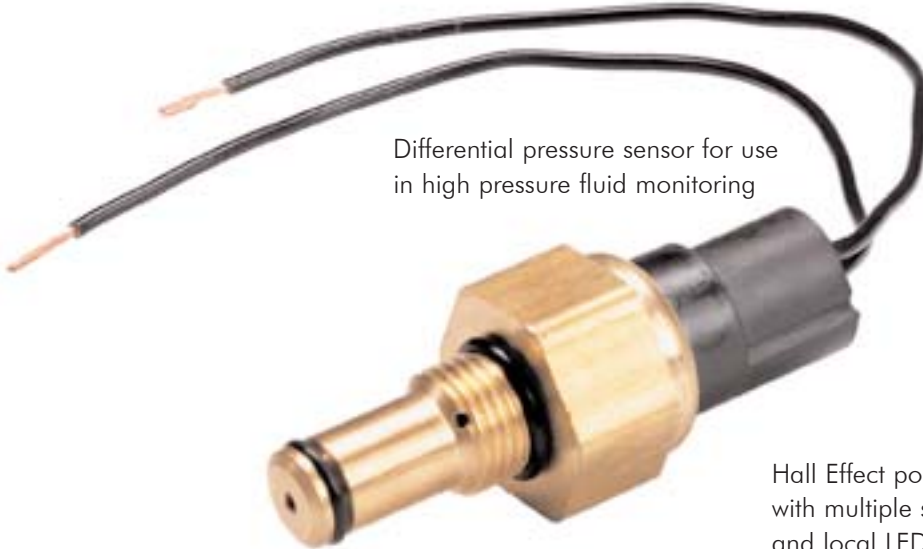
# Alternative Technologies for Fluid Level and Motion

SUNSTAR传感与控制 <http://www.sensor-ic.com/> TEL:0755-83376549 FAX:0755-83376182 E-MAIL:szss20@163.com

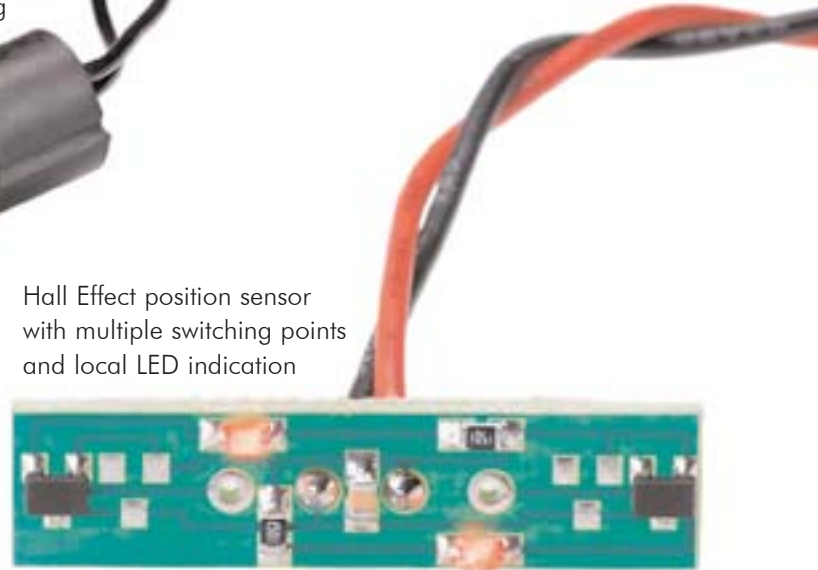
Inductive speed sensors first applied in appliance safety applications requiring ability to withstand harsh environments



Differential pressure sensor for use in high pressure fluid monitoring



Hall Effect position sensor with multiple switching points and local LED indication



## Custom Sensors & Alternative Technologies

SUNSTAR自动化 <http://www.sensor-ic.com/> TEL: 0755-83376489 FAX:0755-83376182 E-MAIL:szss20@163.com

[www.StandexElectronics.com](http://www.StandexElectronics.com)



Standex Electronics, Inc.  
4538 Camberwell Road  
Cincinnati, Ohio 45209  
**5 1 3 . 8 7 1 . 3 7 7 7**  
513.871.3779 (fax)

Standex Electronics (UK) Inc.  
40 Morley Road, Tonbridge,  
Kent, England T9N 1RA  
**+44(0) 1732 771 023**  
+44 (0) 1732 770 122 (fax)

**www.StandexElectronics.com**



### About Standex Electronics

Standex Electronics Inc. is a subsidiary of Standex International Corporation, symbol SXI on the New York Stock Exchange. Standex Electronics is registered to quality standard ISO/TS 16949:2002. Standex Electronics divisional headquarters are located in Cincinnati, Ohio, USA. In addition to the factory in Cincinnati, facilities are also maintained in Sonora, Mexico; Arizona, USA; Kent, United Kingdom; Ontario, Canada; Hong Kong; and China.

### Other Products

Standex Electronics is a manufacturer of electronic components and subassemblies including inductors, chokes, transformers, antenna coils, Reed switches, Reed relays, connectors, progressive die stampings, insert-molded plastic components and custom products combining many of the above components as well as the proximity and fluid level sensors detailed within.



**SUNSTAR商斯达实业集团**是集研发、生产、工程、销售、代理经销、技术咨询、信息服务等为一体的高科技企业，是专业高科技电子产品生产厂家，是具有10多年历史的专业电子元器件供应商，是中国最早和最大的仓储式连锁规模经营大型综合电子零部件代理分销商之一，是一家专业代理和分销世界各大品牌IC芯片和电子元器件的连锁经营综合性国际公司。在香港、北京、深圳、上海、西安、成都等全国主要电子市场设有直属分公司和产品展示展销窗口门市部专卖店及代理分销商，已在全国范围内建成强大统一的供货和代理分销网络。我们专业代理经销、开发生产电子元器件、集成电路、传感器、微波光电元器件、工控机/DOC/DOM电子盘、专用电路、单片机开发、MCU/DSP/ARM/FPGA软件硬件、二极管、三极管、模块等，是您可靠的一站式现货配套供应商、方案提供商、部件功能模块开发配套商。**专业以现代信息产业（计算机、通讯及传感器）三大支柱之一的传感器为主营业务，专业经营各类传感器的代理、销售生产、网络信息、科技图书资料及配套产品设计、工程开发。我们的专业网站——中国传感器科技信息网（全球传感器数据库）www.SENSOR-IC.COM 服务于全球高科技生产商及贸易商，为企业科技产品开发提供技术交流平台。欢迎各厂商互通有无、交换信息、交换链接、发布寻求代理信息。欢迎国外高科技传感器、变送器、执行器、自动控制产品厂商介绍产品到中国，共同开拓市场。**本网站是关于各种传感器-变送器-仪器仪表及工业自动化大型专业网站，深入到工业控制、系统工程计 测量、自动化、安防报警、消费电子等众多领域，把最新的传感器-变送器-仪器仪表买卖信息，最新技术供求，最新采购商，行业动态，发展方向，最新的技术应用和市场资讯及时的传递给广大科技开发、科学研究、产品设计人员。本网站已成功为石油、化工、电力、医药、生物、航空、航天、国防、能源、冶金、电子、工业、农业、交通、汽车、矿山、煤炭、纺织、信息、通信、IT、安防、环保、印刷、科研、气象、仪器仪表等领域从事科学研究、产品设计、开发、生产制造的科技人员、管理人员、和采购人员提供满意服务。**我公司专业生产、代理、经销、销售各种传感器、变送器、敏感元器件、开关、执行器、仪器仪表、自动化控制系统：专门从事设计、生产、销售各种传感器、变送器、各种测控仪表、热工仪表、现场控制器、计算机控制系统、数据采集系统、各类环境监控系统、专用控制系统应用软件以及嵌入式系统开发及应用等工作。如热敏电阻、压敏电阻、温度传感器、温度变送器、湿度传感器、湿度变送器、气体传感器、气体变送器、压力传感器、压力变送、称重传感器、物（液）位传感器、物（液）位变送器、流量传感器、流量变送器、电流（压）传感器、溶氧传感器、霍尔传感器、图像传感器、超声波传感器、位移传感器、速度传感器、加速度传感器、扭距传感器、红外传感器、紫外传感器、火焰传感器、激光传感器、振动传感器、轴角传感器、光电传感器、接近传感器、簧管传感器、继电器传感器、微型电泵、磁敏（阻）传感器、压力开关、接近开关、光电开关、色标传感器、光纤传感器、齿轮测速传感器、时间继电器、计数器、计米器、温控仪、固态继电器、调压模块、电磁铁、电压表、电流表等特殊传感器。同时承接传感器应用电路、产品设计和自动化工程项目。**

欢迎索取免费详细资料、设计指南和光盘；产品凡多，未能尽录，欢迎来电查询。

更多产品请看本公司产品专用销售网站：

商斯达中国传感器科技信息网：<http://www.sensor-ic.com/>

商斯达工控安防网：<http://www.pc-ps.net/>

商斯达电子元器件网：<http://www.sunstare.com/>

商斯达微波光电产品网：[HTTP://www.rfoe.net/](http://www.rfoe.net/)

商斯达消费电子产品网：<http://www.icasic.com/>

商斯达军工产品网：<http://www.junpinic.com/>

商斯达实业科技产品网：<http://www.sunstars.cn/>传感器销售热线：

地址：深圳市福田区福华路福庆街鸿图大厦1602室

电话：0755-83607652 83376489 83376549 83370250 83370251 82500323

传真：0755-83376182 (0) 13902971329 MSN: [SUNS888@hotmail.com](mailto:SUNS888@hotmail.com)

邮编：518033 E-mail: [szss20@163.com](mailto:szss20@163.com) QQ: 195847376

深圳赛格展销部：深圳华强北路赛格电子市场2583号 电话：0755-83665529

技术支持：0755-83394033 13501568376