

Hermetic Switch Reed Switches

STANDARD

HIGH VOLTAGE

| Parameters | Type | STANDARD | | | | HIGH VOLTAGE | | | | | | |
|---|-------|-----------------------|-----------------|------------------|------------------|-----------------|-----------------|-----------------|------------------|------------------|------------------|-----------------|
| | | HSR-170 | HSR-190 | HSR-194 | HSR-630 | HSR-780 | HSR-790 | HSR-V7K | HSR-V10K | HSR-V15K | HSR-830 | |
| Configuration | | SPST | SPST | SPST | SPDT | SPST | SPST | SPST | SPST | SPST | SPDT | |
| Contact Material ¹ | | R | R | W | R | R | W | W | W | W | R | |
| Figure | | A-1 | A-1 | A-1 | C-2 | A-1 | A-1 | A-3 | A-3 | A-3 | C-2 | |
| Switching Voltage | Max | Volts DC | 200 | 250 | 350 | 150 | 500 | 1000 | 5000 | 7500 | 10000 | 250 |
| | | Volts AC ⁵ | 120 | 240 | 240 | 120 | 240 | 240 | 240 | 240 | 240 | 240 |
| Switching Current | Max | A | 1.0 | 1.0 | 2.0 | 1.0 | 1.5 | 2.5 | 3.0 | 3.0 | 3.0 | 1.0 |
| Switching Power | Max | W/VA | 25 | 15 | 50 | 25 | 25 | 50 | 50 | 50 | 50 | 25 |
| Voltage Breakdown ² | Min | Volts DC | 500 | 700 | 600 | 350 | 2500 | 2500 | 7000 | 10000 | 15000 | 1000 |
| Initial Contact Resistance | Max | Ohms | 0.1 | 0.1 | 0.1 | 0.1 | 0.1 | 0.1 | 0.1 | 0.1 | 0.1 | 0.1 |
| Insulation Resistance ³ | Min | Ohms | 10 ⁹ | 10 ¹⁰ | 10 ¹⁰ | 10 ⁹ | 10 ⁷ | 10 ⁸ | 10 ¹¹ | 10 ¹¹ | 10 ¹¹ | 10 ⁷ |
| Operate Sensitivity ⁸ | Range | AT | 40/80 | 40/80 | 60/100 | 40/80 | 60/100 | 60/100 | 60/125 | 100/150 | 140/170 | 50/100 |
| Standard Test Coil NARM RS-421-A | | | III | IV | IV | IV | IV | IV | III | III | III | IV |
| Operating Time ⁴ Including Bounce | Max | ms | 2.5 | 2.5 | 3.0 | 2.7 | 2.5 | 3.0 | 5.0 | 3.2 | 3.2 | 3.6 |
| Operating Temperature | Range | °C | -40 +125 | -40 +125 | -40 +125 | -40 +125 | 0 to +125 | 0 to +125 | -60 +125 | -60 +125 | -60 +125 | -25 +125 |

Dimensions

| | | | | | | | | | | | | |
|----------------|-------|------|-------|-----------|-----------|-------|-----------|-----------|-----------|-----------|-----------|-------|
| Overall Length | A | Inch | 3.420 | 3.220 | 3.220 | 3.390 | 3.225 | 3.220 | 3.215 | 3.215 | 3.215 | 3.385 |
| Glass Length | B max | Inch | 1.620 | 2.010 | 2.005 | 1.315 | 1.940 | 1.945 | 2.005 | 2.005 | 2.005 | 1.275 |
| Glass Diameter | C max | Inch | .190 | .210 | .210 | .210 | .210 | .210 | .210 | .210 | .210 | .210 |
| Lead Diameter | D | Inch | .061 | .021x.098 | .021x.098 | .040 | .021x.098 | .021x.098 | .021x.098 | .021x.098 | .021x.098 | .040 |
| Gap Location | G | Inch | 1.700 | 1.615 | 1.615 | 1.500 | 1.600 | 1.615 | 1.615 | 1.615 | 1.615 | 1.500 |

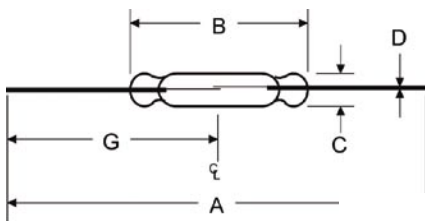


FIGURE A-1

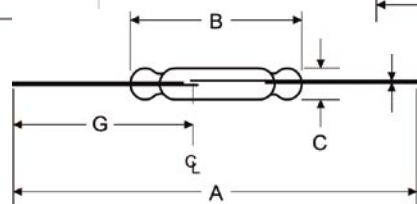


FIGURE A-2

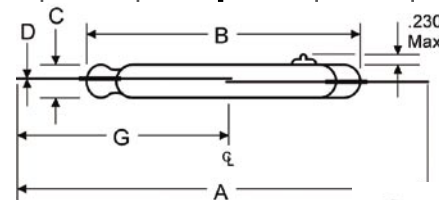


FIGURE A-3

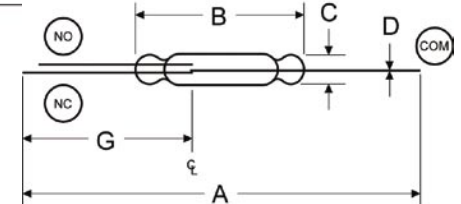


FIGURE C-2