

Pioneering new technologies
Pioneering new technologies

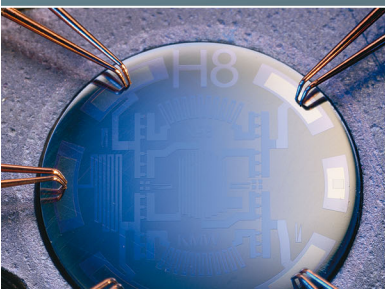
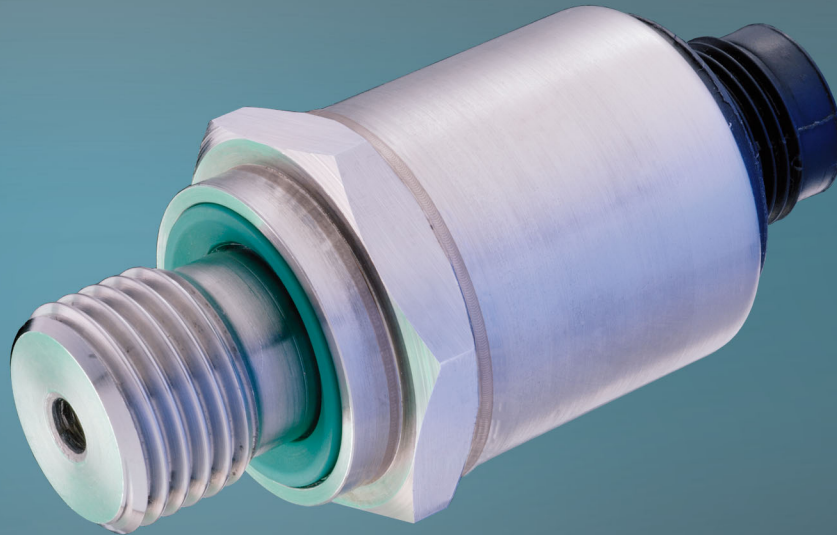


Sensor-Technik Wiedemann GmbH
Mobile Controllers and Measurement Technologies



Pressure transmitter M01-CAN

Pressure transmitter M01-CAN



Pressure transmitter M01-CAN

The M01 is especially designed to be used in off-highway vehicles. The EMC, shock and vibration protection is designed for these machines and the rough environment they operate in.

The M01 is available for use in pressure ranges from 0 to 25 bar up to 0 to 800 bar. Within the compensated temperature range the accuracy is 1% overall. The M01 can be used with a medium temperature of up to 150°C (302°F) and the maximum permissible ambient temperature is 125°C (257°F). All wetted parts are of stainless steel (1.4548). In combination with the welded thin-film measuring element, the transmitter has a high media compatibility. An optional damping element can be integrated into the medium access. The housing is also constructed of stainless steel (1.4301).

The M01 is manufactured according to ISO/TS 16949 and is licensed in accordance with e1. The good cost/performance ratio makes this pressure transmitter ideal for series production in off-highway vehicles and for industrial use. OEM versions are also available.

Technical specifications

Pressure range, gauge	0 - 25 bar to 0 - 800 bar, other ranges available free of charge					
Standard pressure range	bar	50	100	250	400	800
Overload	bar	100	200	500	800	1000
Linearity, pressure hysteresis and repeatability	% FS	< 0.5				
Overall accuracy	% FS	< = 1.0 (0 to 80° C / 0 to 176° F) < = 1.5 (-25 to 100° C / -13 to 212° F) < = 2.5 (-40 to 125° C / -40 to 257° F)				
Long-run stability	% FS p.a.	< 0.2				
Media temperature	-40 to 150 °C (-40 to 302°F)					
Operating temperature	-40 to 125 °C (-40 to 257°F)					
Storage temperature	-40 to 125 °C (-40 to 257°F)					
Voltage supply	9 - 36 V DC 14 - 36 V DC (0 - 10 V voltage output) allowable ripple @ 50 Hz: 10% 5 V DC (ratiometric output)					
Output signal	4 - 20 mA (2-wire-technique), 0/4-20 mA (3-wire-technique), 0-10 V, 0.5 - 4.5 V (ratiometric at 5V), short circuit protected					
Electrical connection	M12 connector, DIN-Bajonett (DIN 72585); AMP-SuperSeal 1,5; Cable output more connectors on request					
Pressure connection	G 1/4, 1/4 NPT, G1/4 with manometer, more pressure connectors on request					
Protection class	IP 65 optional IP 69k (depends on used electrical connection)					
Starting torque	up to 35 Nm					
EMC	EN 61000-6-2 EN 61000-6-3					
Shock	500g per IEC 60068-2-27 (Shock mechanical)					
Vibration	20g per IEC 60068-2-6 (Vibration at resonance)					
Material wetted parts	1.4548 / FKM					
Material housing	1.4301					
Material diaphragm	1.4548					

Pressure transmitter M01-CAN

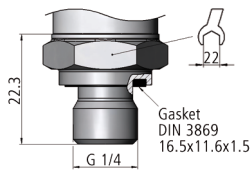
Electrical connection Protection class IP (IEC 60 529)

CIRCULAR PLUG-IN CONNECTOR
M 12x1, 5-pole, IP 67

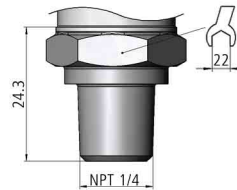


Pressure connection

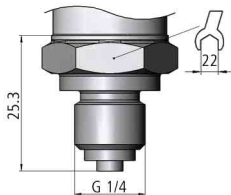
G 1/4, DIN 3852 T 11 (Form E)



1/4 NPT
per „Nominal width for US-Standard bevelled
pipe thread NPT“



G 1/4 with manometer
Manometer per EN837-1 (optional DIN 16288)



Pin assignment STW pressure transmitter (Assignment acc. to CiA DR-303-1)

	Connector	Cable
+U _B	2	black
GND	3	brown
+Wire	4	red
-Wire	5	orange
PE, Chassis	1	white

