



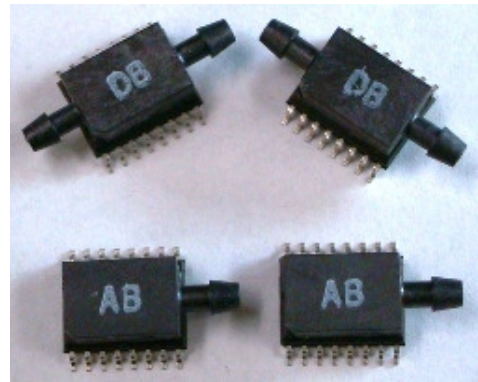
- **FULLY INTEGRATED CMOS PRESSURE SENSOR SYSTEM IN A STANDARD SO-16 PACKAGE**
- **FACTORY CALIBRATED SINGLE-CHIP INTEGRATED SENSOR**
- **IMPROVED ACCURACY COMPARED TO COMPETITIVE PRODUCTS**
- **LOWER COST ASSOCIATED WITH SENSOR INTEGRATION AND PACKAGE DESIGN**

DESCRIPTION

The Silicon Microstructures **SM5822** and **SM5872** series of OEM integrated pressure sensors combine state-of-the-art pressure sensor technology with on-chip signal processing technology to produce an amplified, fully conditioned, multi-order pressure and temperature compensated sensor die in a low cost SO-16 plastic package.

The sensor utilizes a CMOS digital signal processor and on-chip EEPROM for storage of calibration and compensation data. This allows the device to be factory calibrated including the effects from packaging stress. It also permits multi-order temperature and pressure compensation to achieve increased accuracy compared to conventional amplified pressure systems.

The **SM5822/SM5872** series pressure sensor is a factory calibrated ready-to-use sensor system. The model **SM5822** is designed for operating pressure ranges from 0-5 PSI to 0-60 PSI full-scale in gauge, differential, single-ended, and absolute pressure configurations. The model **SM5872** is designed for operating low-pressure ranges from 0-0.6 PSI up to 0-1.5 PSI full-scale for gauge, differential, and single-ended differential pressure applications. For both models, the sensor output is ratiometric with the supply voltage.



FEATURES

- Amplified, calibrated, fully signal conditioned output span of 4.0 VDC FS (0.5 to 4.5 V signal)
- Digital temperature and calibrated pressure available through I²C interface
- Output ratiometric with supply voltage
- Multi-order correction for pressure non-linearity (factory programmed)
- Multi-order correction for temperature coefficient of span and offset (factory programmed)
- Gage, differential, single-ended and absolute versions

TYPICAL APPLICATIONS

- Heating, Ventilation and Air Conditioning (HVAC)
- Barometric measurement
- Medical instrumentation
- Pneumatic control
- Gas flow
- Respirators and ventilators

THEORY OF OPERATION

The operation of the signal processor is depicted in the block diagram below. The internal pressure sensor is a piezoresistive bridge. This transduces the applied pressure into an electronic signal, which feeds into the integrating amplifier.

During the amplification step an offset correction factor is added to allow for maximum gain for a given pressure while minimizing the offset error.

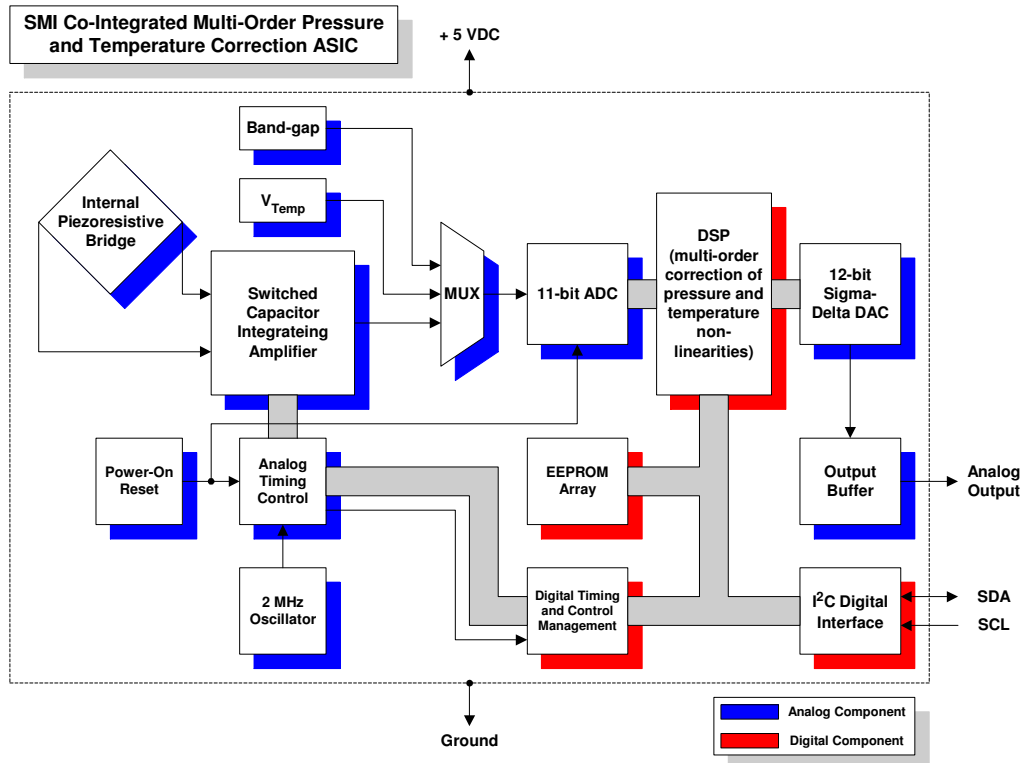
The signal is then processed by an 11-bit analog to digital converter (ADC). The ADC samples the signal multiple times and uses the sum of those samples as a 13-bit word.

A digital signal processor (DSP) is then used to correct and calibrate the pressure signal. The DSP provides multi-order correction of both pressure and temperature non-linearity through the use of factory-programmed coefficients. A combined total of twenty coefficients are available for correcting

pressure and temperature non-linearity. The unique coefficients are determined during a calibration process performed at the factory. Factory calibration is the last step performed, which means the effect of the package on the pressure signal will also be taken into account. This provides a great advantage over conventional laser-trimming approaches.

The DSP produces a corrected digital word, which is transferred to a 12-bit digital to analog converter (DAC) to provide a calibrated analog output. In addition to the analog output, the corrected pressure signal is accessible through an I²C digital interface.

See SMI application note AN05-001 for a detailed description of how to read out the digital corrected pressure signal using the I2C bus interface.



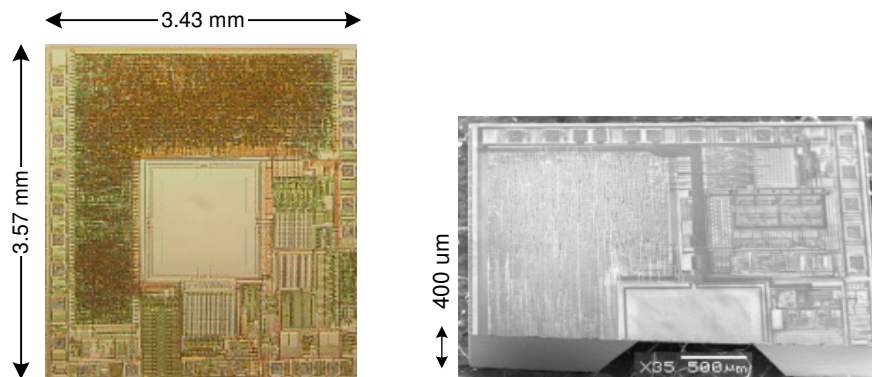
CHARACTERISTICS FOR SM5822/SM5872 – SPECIFICATIONS

All parameters are measured at room temperature while applying 5.000V supply, unless otherwise specified.

	Absolute ¹ , Gage & Single ²			Differential ³			UNITS	NOTES
	MIN	TYP	MAX	MIN	TYP	MAX		
Zero output (absolute and gauge)	0.42	0.50	0.58				V	4
Zero output (differential)				2.42	2.50	2.58	V	4
Output span	3.92	4.00	4.08	1.96	2.00	2.04	V FS	4, 5
Total Error			1			1	%FS	11
Response time	2			2			msec	9
Supply voltage	4.75	5.00	5.25	4.75	5.00	5.25	V	4, 7
Current consumption			10			10	mA	9
Overpressure (burst pressure)		>5X			>5X		%FS	6, 9, 10
Operating temperature range	-40	+25	+125	-40	+25	+125	°C	9
Compensated temperature range	+15	+25	+75	+15	+25	+75	°C	
Storage temperature range	-40	+25	+150	-40	+25	+150	°C	9
Media compatibility								8, 9

Notes:

1. Absolute parts are only offered in the SM5822 Series.
2. Single-ended parts (Pressure Type - S) have 2 ports and are for higher gain differential applications where the differential pressure is **always** positive.
3. For the 5822 series this applies for positive pressure only.
4. Sensor output is ratiometric to supply.
5. Full-scale (FS) is defined as zero pressure to rated pressure; differential parts can be used \pm FS. Absolute and Gauge zero output is 0.5 V typical and full-scale output is 4.5 V. Span is the difference between Full-scale output and zero output, (4 V). For Differential parts, the negative full-scale is typically at 0.5 V, zero is typically 2.5 V, and positive full-scale is 4.5 volts to give a span of \pm 2.0 V.
6. Or 150 PSI, whichever is less. Output amplifier will saturate at about 0.25 V for applied pressure below the rated Zero and at about 4.75 V for applied pressure above the rated Full-scale.
7. A 100 nF filter capacitor must be placed between Vsupply and Ground.
8. Clean, dry gas compatible with wetted materials. Wetted materials include Pyrex glass, silicon, Kovar™, epoxy, RTV, gold, aluminum, Ultem™ plastic, Duraplast™ plastic.
9. Tested on a sample basis
10. Maximum pressure on package is 150 PSI
11. Total error is defined as departure from ideal response at all temperatures and pressures as a percentage of full scale. This includes temperature error and pressure non-linearity error.



40SP5002.03

12_08



ADDITIONAL INFORMATION

Package Dimensions & Pin-Out

PIN	DESCRIPTION
1	NC
2	NC
3	SERIAL DATA (SDA)
4	SERIAL CLOCK (SCL)
5	NC
6	NC
7	NC
8	NC
9	NC
10	NC
11	NC
12	GROUND
13	V _{exc} = 5.000 VDC
14	NC
15	NC
16	ANALOG OUTPUT

NOTE:
1) ALL THE DIMENSIONS ARE IN MM
2) GAUGE/ABSOLUTE TYPE DIMENSIONS ARE SAME AS DIFFERENTIAL TYPE EXCEPT GAUGE/ABSOLUTE TYPE HAS ONE SIDE PORT

NOTES:
• Do **not** connect to NC pins.
• External connections to NC pins will cause part malfunction.

Ordering Information

Pressure Type
A: Absolute (1 port)
D: Differential (2 ports)
G: Gauge (1 port)
S: Single-ended (2 ports)

Cap Type
B: Horizontal barbed ports

Notes
1. Absolute configuration only available in SM5822.
2. Single-ended configuration is for higher gain differential applications where differential pressure is **always** positive.
3. Other configurations available on large orders. Consult SMI for details.

Model Number: **SM5822 - XXX - Y - B**

Pressure Type: XXX
Pressure Range: Y
Cap Type: B

Full-Scale Pressure Ranges

SM5822	PSI	[kPa]	SM5872	PSI	[kPa]
005	5	[34.5]	006	0.6	[4.1]
015	15	[103.4]	015	1.5	[10.3]
030	30	[206.8]			
060	60	[413.7]			

Wiring Diagrams

Wiring diagram for analog output: V_{exc} = + 5.000 VDC, 100 nF capacitor to GROUND, ANALOG OUTPUT, GROUND.

Wiring diagram for digital output: V_{exc} = + 5.000 VDC, 100 nF capacitor to GROUND, SERIAL CLOCK (SCL), SERIAL DATA (SDA), GROUND.

**NOTICE**

Information in this document is provided solely to enable software and system implementers to use Silicon Microstructures, Inc. products and/or services. No express or implied copyright licenses are granted hereunder to design or fabricate any silicon-based microstructures based on the information in this document.

Silicon Microstructures, Inc. makes no warranty, representation, or guarantee regarding the suitability of its products for any particular purpose, nor does Silicon Microstructures, Inc. assume any liability arising out of the application or use of any product or silicon-based microstructure, and specifically disclaims any and all liability, including without limitation consequential or incidental damages. Parameters that may be provided in Silicon Microstructures, Inc. data sheets and/or specifications can and do vary in different applications and actual performance may vary over time. Silicon Microstructures, Inc. assumes no responsibility for any inaccuracies and/or errors in this publication. All operating parameters, must be validated for each customer application by customer's technical experts. Silicon Microstructures, Inc. does not convey any license under its patent rights nor the rights of others. Silicon Microstructures, Inc. makes no representation that the circuits are free of patent infringement. Silicon Microstructures, Inc. products are not designed, intended, or authorized for use as components in systems intended for surgical implant into the body, or other applications intended to support or sustain life, or for any other application in which the failure of the Silicon Microstructures, Inc. product could create a situation where personal injury or death may occur. Should Buyer purchase or use Silicon Microstructures products for any such unintended or unauthorized application, Buyer shall indemnify and hold Silicon Microstructures, Inc. and its officers, employees, subsidiaries, affiliates, and distributors harmless against all claims, costs, damages, and expenses, and reasonable attorney fees arising out of, directly or indirectly, any claim of personal injury or death associated with such unintended or unauthorized use, even if such claim alleges that Silicon Microstructures, Inc. was negligent regarding the design or manufacture of the part. Silicon Microstructures, Inc. reserves the right to make changes without further notice to any products herein

Silicon Microstructures, Inc.TM and the Silicon Microstructures, Inc. logo are trademarks of Silicon Microstructures, Inc. All other service or product names are the property of their respective owners.

© Silicon Microstructures, Inc. 2001-2008. All rights reserved.