

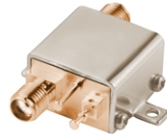
# AMPLIFIERS BROADBAND, LINEAR

50Ω

Coaxial

High Isolation 0.5 to 5.9 GHz

**NEW!**



ZX60-M (GC957)



ZX60-M (GA955)

All specifications at 25°C

MODEL NO.	FREQ. (GHz) $f_l - f_u$	DC VOLTS (V)	GAIN, dB Typical							MAXIMUM POWER (dBm)		DYNAMIC RANGE			VSWR (:1) Typ.		ACTIVE* DIRECTIVITY (dB) Typ.	DC OPERATING CURRENT @ V+ (mA)		CASE STYLE Note B	PRICE \$ ea. Qty. (1-9)	
			over frequency, GHz							Output (1 dB Comp.) Typ.		NF (dB) Typ.	IP3 (dBm) Typ.		In	Out		Typ.	Typ.			Max.
			0.5	1.0	1.5	2.0	2.5	Min. at 2 GHz	$f_l$	$f_u$	at 1 GHz		at 1 GHz	at 2 GHz								
ZX60-2510M	0.5-2.5	5.0 2.8	10.3 9.1	12.7 11.2	12.9 11.2	12.5 10.7	12.1 10.3	10.4 —	17.1 13.7	15.1 13.0	5.4 5.4	28.8 24.9	26.5 23.4	1.5 1.5	1.6 1.6	20 20	69 63	95 —	GC957	59.95		
ZX60-2514M	0.5-2.5	5.0 2.8	14.1 12.9	16.5 14.9	16.4 14.8	15.7 14.3	14.1 13.0	14.0 —	18.3 14.3	16.2 14.2	4.8 4.9	30.3 26.0	27.8 24.9	1.5 1.5	1.7 1.7	20 20	75 67	90 —	GC957	59.95		
ZX60-2522M	0.5-2.5	5.0 2.8	18.7 17.2	22.5 20.2	23.5 20.6	23.3 20.6	21.7 20.0	21.5 —	18.0 14.4	15.8 14.2	3.0 3.0	30.6 25.7	28.8 25.6	1.5 1.4	1.7 1.8	17 20	86 80	95 —	GC957	59.95		
ZX60-2531M	0.5-2.5	5.0	30.3	38.0	37.4	35.5	32.8	31.0	18.2	16.1	3.5	28.4	26.1	1.3	1.6	30	102	130	GA955	64.95		
ZX60-2534M	0.5-2.5	5.0 2.8	31.7 28.9	39.4 35.2	39.4 34.9	38.4 34.6	35.9 32.8	34.0 31.0	18.0 13.8	15.9 14.0	3.1 3.1	30.0 25.4	27.8 24.6	1.3 1.3	1.5 1.8	25 23	153 141	185 185	GA955	64.95		
ZX60-5916M	1.5-5.9	5.0 2.8	over frequency, GHz					15.5	14.5	15.7	11.5	12.8	2 GHz	2 GHz	5.9 GHz	2.2	1.2	20	73	96	GC957	64.95
			1.5	2.0	3.5	5.0	5.9					6.4	28.3	28.9	2.5	1.4	25	66	—			

\*active directivity=isolation-gain

features

- from 2.8V to 5V operation
- wide bandwidth, 0.5 to 2.5 GHz and 1.5 to 5.9 GHz
- high active directivity\*, 20 dB typ.
- output power, up to +19.2 dBm typ.
- patent pending

applications

- buffer amplifier
- LO amplifier for mixers
- cellular
- PCN
- instrumentation

absolute maximum ratings

operating temperature: ..... -40°C to 85°C  
 storage temperature: ..... -55°C to 100°C  
 dc voltage: ..... 7V  
 input power (no damage) ..... 10dBm  
 dc power: (all models) ..... 500mW  
 except: ZX60-2531M ..... 700mW  
 ZX60-2534M ..... 1W

NOTES:

- B. Connector types and case mounted options, case finishes are given in section 0, see "Case styles & outline drawings". case dimensions & finishes see "Case Styles & Outline Drawings".
- C. Prices and Specifications subject to change without notice.
- D. For Quality Control Procedures see Table of Contents, "Mini-Circuits Guarantees Quality" article. For Environmental Specifications see Amplifier Selection Guide.



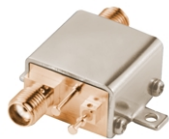
INTERNET <http://www.minicircuits.com>

P.O. Box 350166, Brooklyn, New York 11235-0003 (718) 934-4500 Fax (718) 332-4661

SUNSTAR微波光电 <http://www.rfoe.net/> TEL:0755-83396822 FAX:0755-83376182 E-MAIL: szsss20@163.com

# Low Noise 0.02 to 8 GHz

**NEW!**



ZX60 (GC957)

All specifications at 25°C

MODEL NO.	FREQ. (GHz) $f_1 - f_2$	DC VOLTS (V)	GAIN, dB Typical								MAXIMUM POWER (dBm) Output (1 dB Comp.) Typ. $f_1$ $f_2$	DYNAMIC RANGE		VSWR (:1) Typ.		ACTIVE* DIRECTIVITY (dB) Typ.	DC OPERATING CURRENT @ V+ (mA)		CASE STYLE Note B	PRICE \$ ea. Qty. (1-9)			
			over frequency, GHz									NF (dB) Typ.	IP3 (dBm) Typ.	In			Out				Typ.	Typ.	Max.
			0.1	1.0	2.0	3.0	4.0	5.0	6.0	8.0				Min. at 2 GHz	$f_1 - f_2$		$f_1 - f_2$	$f_1 - f_2$					
ZX60-3018G	0.02-3	12.0	22.8	21.9	20.3	18.8	—	—	—	18.0	12.8	10.2	2.7	25.0	1.3	—	1.4	—	2-6	34	35	GC957	49.95
ZX60-4016E	0.02-4	12.0	20.1	19.5	18.2	16.5	14.9	—	—	15.7	17.4	14.5	3.9	30.0	1.25	1.3	1.3	1.2	3-6	64	75	GC957	49.95
ZX60-6013E	0.02-6	12.0	16.2	15.9	15.2	14.3	13.4	12.7	12.1	13.0	13.4	5.8	3.3	28.7	1.4	1.6	1.2	1.2	3-9	39	50	GC957	49.95
ZX60-8008E	0.02-8	12.0	11.5	11.1	10.4	9.9	9.0	9.0	8.8	7.0	8.4	6.6	4.1	24	1.3	1.5	1.6	1.9	6-11	39	50	GC957	49.95

### absolute maximum ratings

- operating temperature: ..... -45°C to 85°C
- storage temperature: ..... -55°C to 100°C
- dc voltage: ..... 12.5V
- input power (no damage) ..... 13dBm
- ZX60-6013E & ZX60-8008E ..... 15 dBm
- dc power:
- ZX60-3018G ..... 0.7W
- ZX60-4016E ..... 950mW
- ZX60-6013E & ZX60-8008E ..... 650mW