

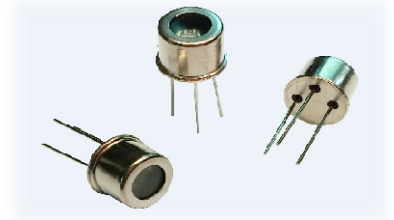
# UV Sensor Module

## GUVB-T21GH



### Features

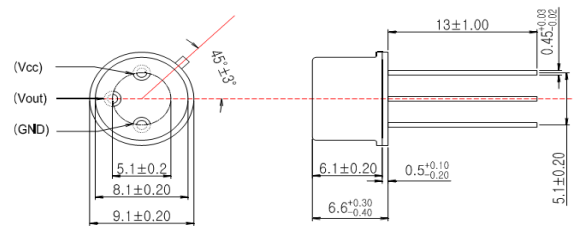
- Single Supply Voltage Operation
- Amplified Voltage Output
- High Sensitivity and Good Solar Blindness
- Small and Compact Size



### Applications

- UV-B Lamp Monitoring
- UV Index monitoring

### Outline Diagrams and Dimensions(unit:mm)



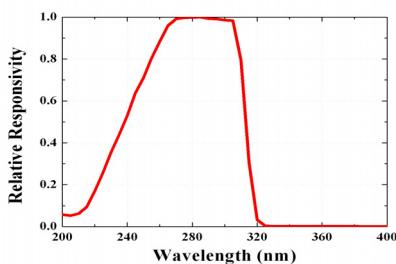
### Absolute Maximum Ratings

Parameter	Symbol	Min.	Max.	Unit	Remark
Storage Temperature	T <sub>st</sub>	-40	90	°C	
Operating Temperature	T <sub>op</sub>	-30	85	°C	
Supply Voltage	V <sub>cc</sub>		5.5	V	
Soldering Temperature	T <sub>sol</sub>		260	°C	within 10 sec.

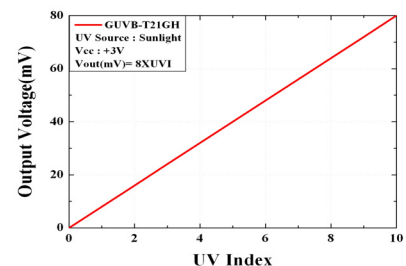
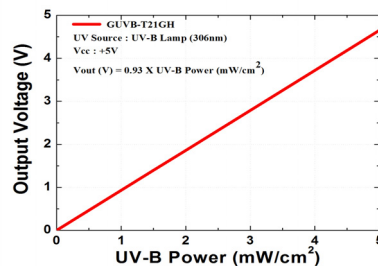
### Characteristics (at 25°C)

Parameter	Symbol	Min.	Typ.	Max.	Unit	Remark
Supply Voltage	V <sub>cc</sub>	1.8		5.5	V	DC
Supply Current	I <sub>Q</sub>		50		μA	
Responsivity	R <sub>p</sub>		1.3		mV/nW	at 300 nm
Spectral Detection Range	λ	220		320	nm	10% of R <sub>p</sub>
Output Voltage	V <sub>out</sub>		0.93		V	1 mW/cm <sup>2</sup>
			8		mV	1 UVI
Detection Power Range	P	0		5.38	mW/cm <sup>2</sup>	V <sub>cc</sub> =5V
Rising Time	T <sub>r</sub>		3		ms	

### Responsivity Curve



### Output Voltage along UV Power



**Caution** ESD can damage the device hence please avoid ESD.