

DRAWING #: AG2402-6

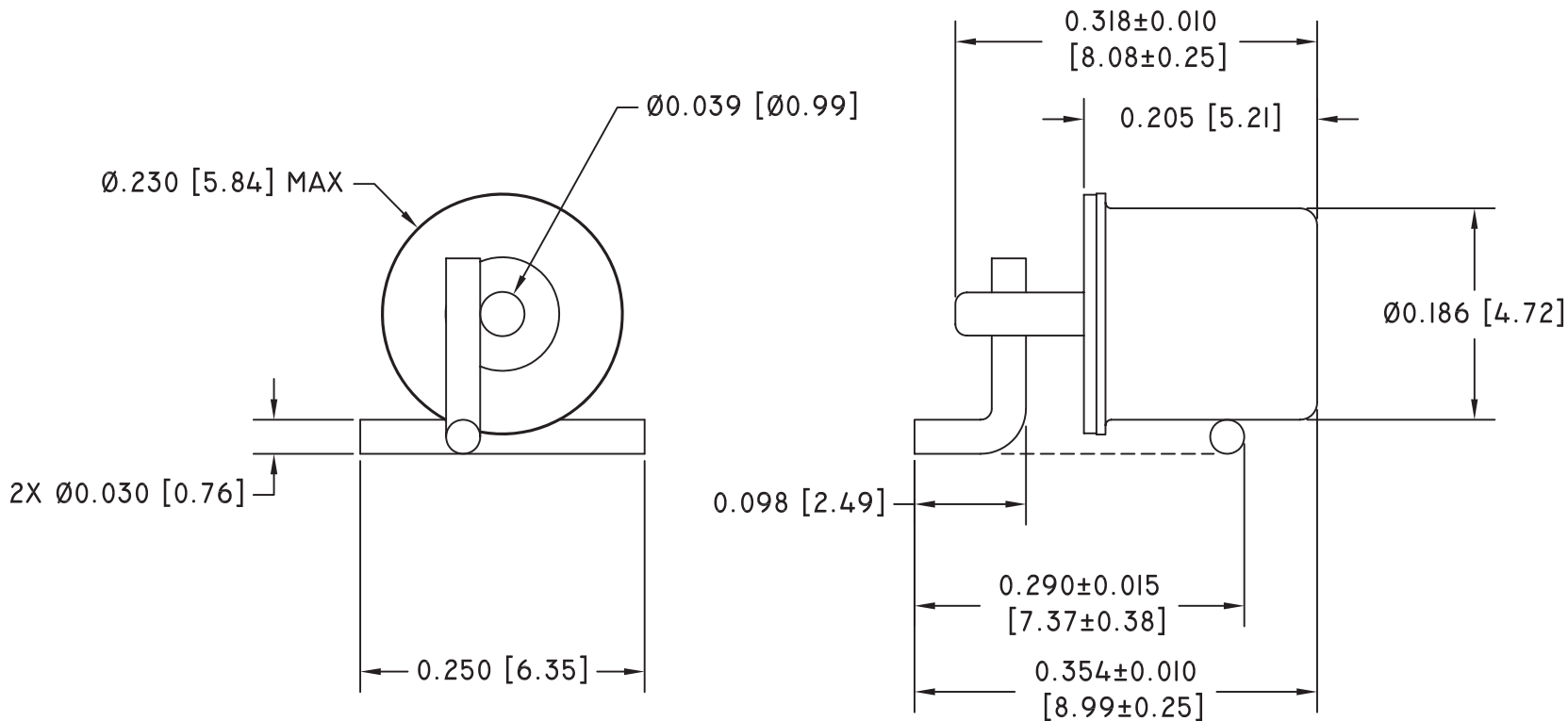
SUNSTAR传感与控制 <http://www.sensor-ic.com/> TEL:0755-83376549 FAX:0755-83376182 E-MAIL:szss200163.com

REV.	DATE	REVISION DESCRIPTION	DR.
A	11/07/05	ECN 2005-102	L.L.

ROHS COMPLIANT

NOTES:

1. ELECTRICAL:
 - 1.1 CONTACT CAPACITY 24 VOLTS MAX., 0.20 AMPS MAX., 5 VA MAX.
 - 1.2 CONTACT RESISTANCE 75 OHMS MAX. AT 5 VOLTS DC
2. OPERATE:
 - 2.1 SWITCH MAY BE CLOSED OR OPEN IN ANY STATIONARY POSITION
 - 2.2 SWITCH WILL EXHIBIT CHANGE OF STATE UPON MOVEMENT IN ANY POSITION
 - 2.3 OPERATING TEMPERATURE -37° C TO 100° C
3. FINISH:
 - 3.1 TIN PLATED



COMUS INTERNATIONAL

454 ALLWOOD ROAD, CLIFTON, NEW JERSEY 07012

TEL. (973) 777-6900

ENGINEERING		
QUALITY		
PRODUCTION		
SALES		
APPROVAL	SIGNATURE	DATE

UNSPECIFIED TOLERANCES

DECIMAL: .XX ±.01 [.25]

.XXX ±.005 [.13]

FRACTIONAL: ± 1/64 [.40]

ANGULAR: ± 1/2°

REF.:

SCALE:

NONE

DRAWN BY:

L.L.

DATE

11/07/2005

TITLE: MOVEMENT/VIBRATION SENSOR; SURFACE MOUNT

SUNSTAR传感与控制 <http://www.sensor-ic.com/> TEL:0755-83376549 FAX:0755-83376182 E-MAIL:szss200163.com

DRAWING #: AG2402-6