

REV.	DATE	REVISION RECORD	DR.

**NOTES:**

**1. ELECTRICAL:**

**1.1. CONTACT CAPACITY 60 VAC MAX., 0.1 A, 3 VA MAX..**

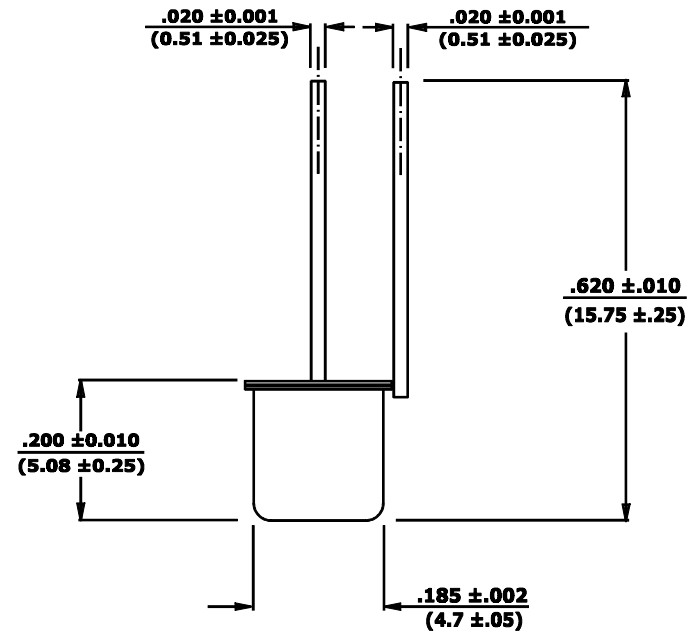
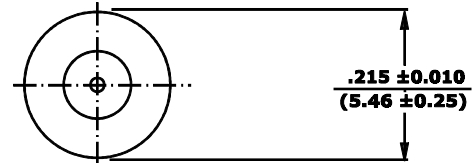
**2. OPERATE:**

**2.1. WHEN STATIONARY IN ANY POSITION**

**THE SWITCH CONTACTS WILL ALWAYS REMAIN OPEN  
AND UPON VIBRATION OR MOVEMENT THE CONTACTS  
WILL INTERMITTENTLY CLOSE.**

**3. FINISH:**

**3.1. EXTERNALLY TIN PLATED.**



**COMUS INTERNATIONAL**

**454 ALLWOOD RD. CLIFTON, NJ 07012 U.S.A. PH (973) 777-6900**

<b>TOLERANCES</b> (except as noted)  <b>DECIMAL</b> ± .01 (.254) 2 Digit ± .005 (.127) 3 Digit  <b>FRACTIONAL</b> ± 1/64 (.397) <b>ANGULAR</b> ± 1/2 °	REF.:	SCALE: NONE	DRAWN BY: L.L.	APPROVED:
	DATE:			
TITLE: MINIATURE NORMALLY OPEN VIBRATION SENSOR				
DATE: 05/06/2000		DRAWING NUMBER: CM1344-1		