

REV.	DATE	REVISION RECORD	DR.
B	7/98 1999	UPDATE TO ISO 9000	S.T.

NOTES:

1. ELECTRICAL:

1.1 CONTACT CAPACITY 1 A & 120 VAC GENERAL PURPOSE.

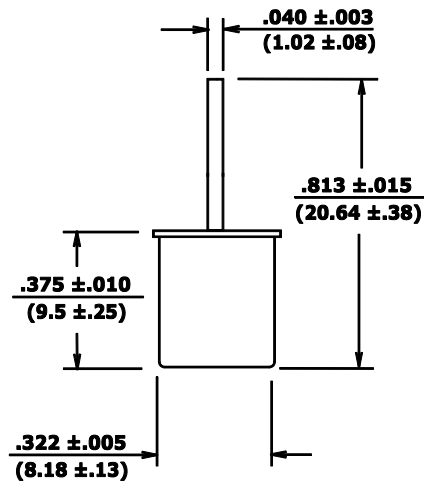
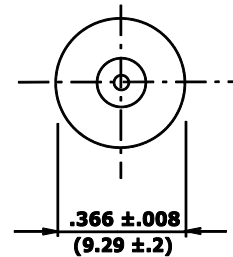
2. OPERATE:

2.1 WHEN STATIONARY IN ANY POSITION

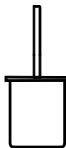
**THE SWITCH CONTACTS WILL ALWAYS REMAIN OPEN
AND UPON VIBRATION OR MOVEMENT THE CONTACTS
WILL INTERMITTENTLY CLOSE.**

3. EXTERNAL FINISH:

3.1 EXTERNALLY TIN PLATED.



SWITCH OPEN IN ALL POSITIONS



COMUS INTERNATIONAL			
454 ALLWOOD RD. CLIFTON, NJ 07012 U.S.A. PH (973) 777-6900			
TOLERANCES (except as noted) DECIMAL ± .01 (.254) 2 Digit ± .005 (.127) 3 Digit FRACTIONAL ± 1/64 (.397) ANGULAR ± 1/2 °	REF.:	SCALE: NONE	DRAWN BY: S.T.
	APPROVED:		
TITLE: VIBRATION SENSOR-NORMALLY OPEN			
DATE: 08/17/98		DRAWING NUMBER: CM4400-0	