

# Sensors

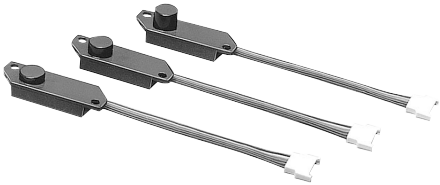
## Mechanical Sensors Powder Level Sensors

### TS-L, -M, -H Series

Plain paper copiers and laser printers require the toner (pigment powder) and carrier (magnetic powder) to be mixed in the proper proportions to create the developer. TDK's TS series of toner sensors was designed to maintain this correct mix ratio.

#### FEATURES

- The TS-L, TS-M and TS-H toner sensors use a high performance ferrite core differential transformer with an adjustable control lead wires. When the DC voltage applied to the control lead wires is varied, the sensor working point also varies. Since the control lead wires (and working point) can be set to practically any desired value, it provides the following capabilities:
- The sensor adjustment point can be installed at any location most convenient for operation.
- Because it has such a wide control range, the working point can be reset easily after changing the developer, or whenever needed.
- The microprocessor in the printer or copier can vary the control lead voltage for automatic adjustment.
- In multi-color printers, it is no longer necessary to use a different constant sensor for each color. One TDK programmable toner sensor can accommodate the working point differences of each color toner with easily adjustable control voltage.
- The compact size of the sensors makes them easy to install in virtually any locations.



#### PRODUCT IDENTIFICATION

TS	10	24	L	B	XX
(1)	(2)	(3)	(4)	(5)	(6)

- |  |                               |
|--|-------------------------------|
| (1)Series name                                 | (5)Sensor protrusion length*4 |
| (2)Internal operation voltage*1                | B: 4.5mm (Standard)           |
| 10:DC.10V(Standard)                            | A: 3mm                        |
| (3)Power supply voltage*2                      | C: 7.5mm                      |
| 24:DC.24V(Standard)                            | (6)TDK internal code*5        |
| (4)Sensor construction*3                       |                               |
| L: TH core(Standard)                           |                               |
| M: TH+RI core(Shielded)                        |                               |
| H: R+RI core(High efficiency magnetic circuit) |                               |
- \*1, \*2 Please contact TDK for applications requiring non-standard voltages.
- \*3 M or H model should be used for applications particularly requiring avoidance of effects caused by the sensor lateral surfaces. Usage conditions should be considered carefully when selecting model H, which is designed for high sensitivity. Due to low cost, model L is also used as an out-of-toner sensor.
- \*4 The most appropriate sensor protrusion length should be selected during design of the toner/carrier tank.
- \*5 Two character control code using by TDK during sampling.
- Standard ratings include the sensor sensitivity and the output filter time constant.

# Sensors

## Mechanical Sensors Powder Level Sensors

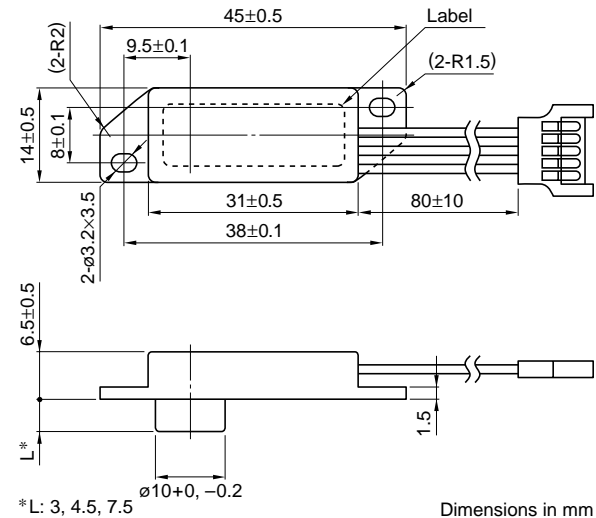
## TS-L, -M, -H Series

### ELECTRICAL CHARACTERISTICS

Power supply	
Rated input voltage Edc(V)	24±5%
Power supply input current(mA)	20max.
Control input	
Rated control input voltage Edc(V)	7
Control input current(mA)	10max.
Control input voltage range Edc(V)	2 to 24
Control input impedance(MΩ)	1±10%
Analog output characteristics	
Output voltage B(V)	2±0.2 [By Vc: 3 at normal temperature and humidity]
Output voltage A(V)	3.3±0.3 [By Vc: 3 at normal temperature and humidity]
Output variable range ΔB(V)	1min.[Vc:by change of 2V]
Output impedance (kΩ)	150±10% at DC
Output filter time constant (s)	1max.
Output ripple E <sub>P-P</sub> (mV)	20max.
Temperature change(V)	±0.5 max.[at 0 to +50°C, change from 25°C]
Digital output characteristics	
Digital output voltage:H (V)	4.5min.
Digital output voltage:L(V)	0.5max.
Digital output current:H(mA)	0.4max.
Digital output current:L(mA)	0.5max.
Level comparator threshold voltage (V)	2.5±0.5[Analog output voltage]

- The value shown above are the adjusted value of programmable toner sensors TS0524LB-X.

### SHAPES AND DIMENSIONS

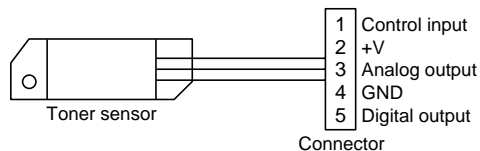


# Sensors

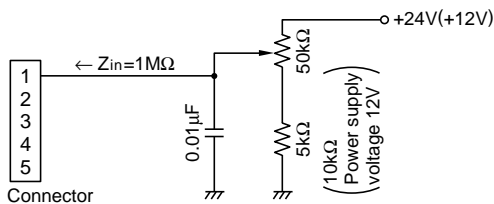
## Mechanical Sensors Powder Level Sensors

## TS-L, -M, -H Series

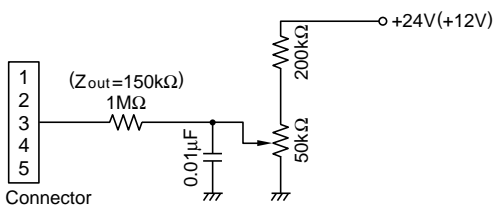
### APPLIED EXAMPLES



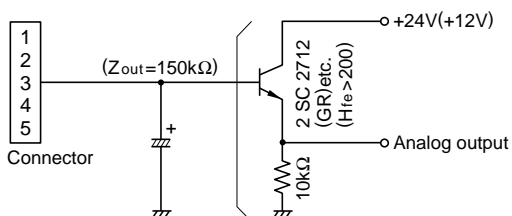
### TO ADJUST WORKING POINT



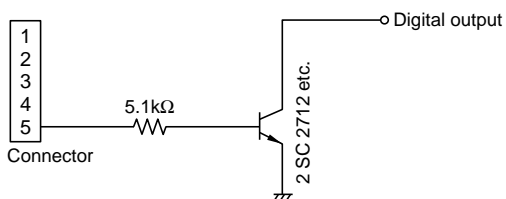
### TO ADJUST DIGITAL OUTPUT THRESHOLD VOLTAGE



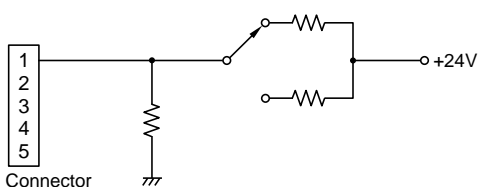
### TO INCREASE ANALOG OUTPUT FILTER TIME CONSTANT



### TO BUFFER DIGITAL OUTPUT

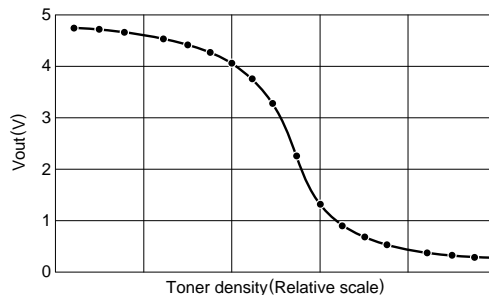


### TO SWITCH WORKING POINT

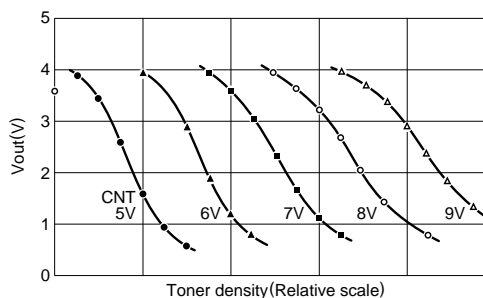


### TYPICAL CHARACTERISTICS

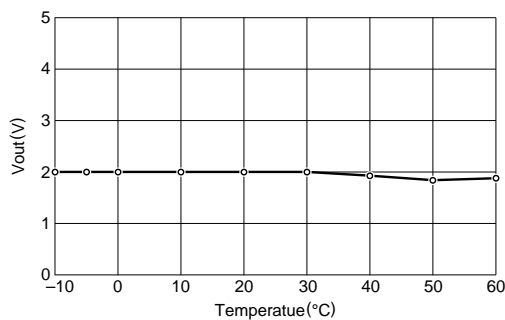
#### TONER DENSITY vs. TYPICAL OUTPUT CHARACTERISTIC (TS0524HC-XX)



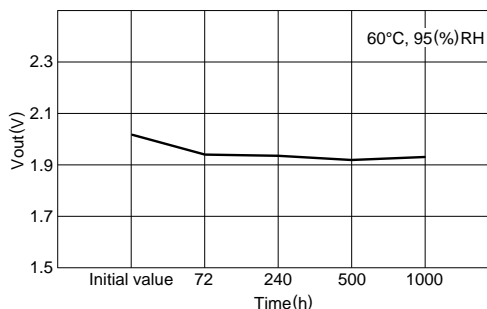
#### CONTROL VOLTAGE vs. TYPICAL OUTPUT CHARACTERISTIC (TS0524LB-XX)



#### TYPICAL TEMPERATURE CHARACTERISTIC (TS0524HC-XX)



#### TYPICAL CHARACTERISTICS TYPICAL HIGH TEMPERATURE AND HIGH HUMIDITY LOAD TEST (TS0524LB-66)



# Sensors

## Mechanical Sensors Powder Level Sensors

## TS-L, -M, -H Series

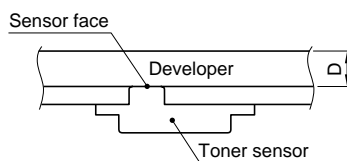
### PRECAUTIONS

Adhere to the following recommendations to ensure stable operation of the programmable toner sensor.

Values shown here are guidelines for general design. Detection sensitivity of sensors is influenced by the material and shape of the developer container that the sensor will be used with, and the mechanism for carrying the developer. Refer to separate documents for special design specifications.

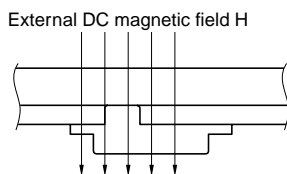
#### 1. The quantity of developer (toner carrier) around the sensor face

The detection sensitivity will drop when the quantity of developer around the sensor face (D in the diagram below) is low (below 5mm). Increasing the sensitivity of the sensor itself through the circuiting can compensate for this. However, as sensor sensitivity increases, environmental and temperature resistance characteristics deteriorate, causing decreased stability of operation. Design the developer container and the mechanism for carrying the developer so that there is a minimum of 6mm (D in the diagram below).

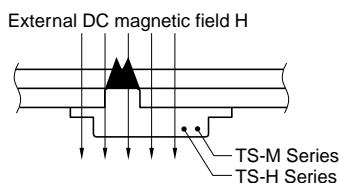


#### 2. Influence of an external magnetic field near the sensor

If a DC magnetic field is applied near the sensor, the sensors working point will need to be changed correspondingly.



If the DC magnetic field strength changes depending on the individual device, the working point of the sensor will need to be reset depending on the DC magnetic field. The best environment is one where there is no DC magnetic field. However, if this is unavoidable, it is recommended that you either apply a magnetic shield at the source of the DC magnetic field, or use the TS-M series that has a magnetic shield core for the sensor.

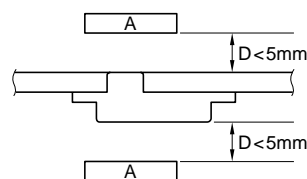


If the DC magnetic field is strong, it may be necessary to use the TS-M series possessing a magnetic shield core, or the highly sensitive TS-H series with a large core for the sensor coil. As shown in the diagram above, however, the carrier that is in the developer

may become trapped over the core, impairing the performance of the sensor. (The TS-L series uses a small core so this situation rarely occurs.)

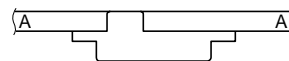
#### 3. Influence of conductive material near the sensor

A conductive material placed near the sensor can also change its working point. If a certain distance is kept between them, normal operation can be recovered by resetting the working point. However, if the conductor is quite close to the sensor, as in the diagram below, the adjustment range for the working point may be exceeded.



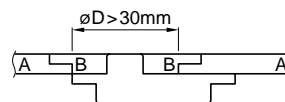
A: Conductors such as aluminum plates

If the sensor is installed on a conductor such as aluminum, it may not function at all since the driving power of the sensor coil will be shorted. This phenomenon is most pronounced with the TS-L series. The TS-M and TS-H series can be installed on conductive surfaces, but the working point adjustment will vary widely from installation to installation due to the close relationship between the mounting and the fluctuation margin of the working point. This complicates adjustment procedures.



A: Conductors such as aluminum plates

If the application requires installing a sensor on aluminum, working point changes can be reduced first by placing a plastic plate of at least  $\phi 30\text{mm}$  in diameter over the aluminum. Even with this method, some variability in working point can be expected.



A: Conductors such as aluminum plates  
B: Non-conductive material such as plastic

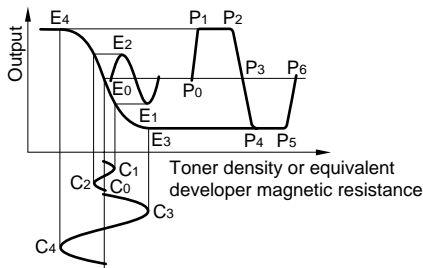
#### 4. Causes of ripple of detection output

Ripple in the output detection occurs when the flow rate of developer around the sensor is unstable. Depending on the size of the ripple, this can considerably lower control accuracy. For this reason it is best to locate the sensor where the flow of developer is smooth. The sensor itself contains a built-in filter for absorbing ripples, so there are generally no problems with a normal level of ripple. However, if the size of the ripples exceed ordinary levels, difficulties such as those describe below may occur.

## Sensors

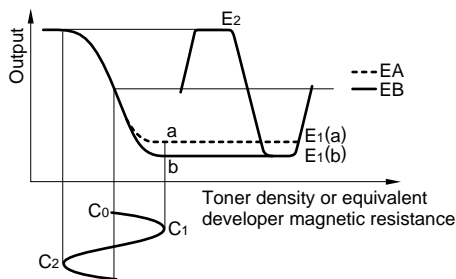
### Mechanical Sensors Powder Level Sensors

### TS-L, -M, -H Series



The above illustration is a model of how unstable developer flow leads to ripple in the detection output. If there is a comparatively small fluctuation in developer flow ( $C_0 \rightarrow C_1 \rightarrow C_0 \rightarrow C_2 \rightarrow C_0$ ) around the working point  $C_0$ , this will be reflected in an output ripple between  $E_1$  and  $E_2$ . As long as the fluctuation in the output ripple remains within the developer working range, the output signal filtering is sufficient to ensure stable sensor characteristics. However, if the flow of developer fluctuates in a more unstable pattern, such as  $C_0 \rightarrow C_3 \rightarrow C_0 \rightarrow C_4 \rightarrow C_0$ , the sensor saturation range may be exceeded as shown by the output ripple peaks  $E_3$  and  $E_4$ . In this case sensing only takes place from  $P_0$  to  $P_1$ ,  $P_2$  to  $P_3$ , and  $P_5$  to  $P_6$ . Sensing does not take place between  $P_1$  to  $P_2$ , or  $P_4$  to  $P_5$  due to saturation. Sensitivity is greatly reduced because of this.

It is possible of course to reduce the ripples through filtering. However, saturation reduces the sensitivity of the sensor itself. In order to maintain the same high level of sensitivity as when there are only small ripples below saturation levels after filtering, the sensitivity needs to be increased in advance. Unfortunately, increasing the sensitivity (increasing the sensitivity to changes in the flow of developer), leads to a larger output ripple. Not only this, but as the S/N ratio does not change when sensitivity is increased, there is no increase in control accuracy, and sensor environmental characteristics are impaired as well, resulting in even more unstable sensing.



The following is another reason for avoiding large ripples.

The previous diagram shows an extremely unstable case where the developer flow fluctuates between  $C_1$  and  $C_2$ . In this model, two sensors, A and B are installed. Apart from having different saturation points they are identical sensors. "a" is the saturation point for sensor A, and "b" is the saturation point of sensor B. With flow fluctuating as shown ( $C_0 \rightarrow C_1 \rightarrow C_0 \rightarrow C_2 \rightarrow C_0$ ), there will be two out-

put ripples,  $E_1(a)$  to  $E_2$ , and  $E_1(b)$  to  $E_2$ . After filtering, the average output EA and EB are of course different.

What this model shows is that two sensors with the same characteristics in the working range before reaching saturation, have different outputs when there is a large ripple, causing further problems with the sensitivity of the sensors. With a large ripple, sensitivity must be adjusted individually in order to keep the output level and sensitivity of each sensor the same. This is obviously an extremely difficult task.

These problems indicate that the problem of output ripples is not just a problem of filter characteristics, and the importance of the stable operation of each installation is emphasized. As TDK programmable toner filters are equipped with a built in filter, any ripples that appear in sensor output are what is left after filtering. When designing the developer container it is best to temporarily remove the sensor filter so that you can view the ripples directly influenced by developer instability.

#### 5. Relation between sensor sensitivity and sensor output voltage.

TDK programmable toner sensors are set with an output center value of 2.5V for the purposes of compatibility with other applications. When the output center values of 2.5V and 5V are compared however, the 5V type has around two times the output voltage fluctuation of the 2.5V type, for the same toner density fluctuation. This shows that the 5V version has around half the sensitivity of the 2.5V version, at the same V/wt%. So the 5V type has far better environment resistance characteristics than the 2.5V type. In view of these things, the 5V type is recommended when designing a new installation.

SUNSTAR 商斯达实业集团是集研发、生产、工程、销售、代理经销、技术咨询、信息服务等为一体的高科技企业，是专业高科技电子产品生产厂家，是具有 10 多年历史的专业电子元器件供应商，是中国最早和最大的仓储式连锁规模经营大型综合电子零部件代理分销商之一，是一家专业代理和分销世界各大品牌 IC 芯片和电子元器件的连锁经营综合性国际公司，专业经营进口、国产名厂名牌电子元件，型号、种类齐全。在香港、北京、深圳、上海、西安、成都等全国主要电子市场设有直属分公司和产品展示展销窗口门市部专卖店及代理分销商，已在全国范围内建成强大统一的供货和代理分销网络。我们专业代理经销、开发生产电子元器件、集成电路、传感器、微波光电元器件、工控机/DOC/DOM 电子盘、专用电路、单片机开发、MCU/DSP/ARM/FPGA 软件硬件、二极管、三极管、模块等，是您可靠的一站式现货配套供应商、方案提供商、部件功能模块开发配套商。商斯达实业公司拥有庞大的资料库，有数位毕业于著名高校——有中国电子工业摇篮之称的西安电子科技大学（西军电）并长期从事国防尖端科技研究的高级工程师为您精挑细选、量身订做各种高科技电子元器件，并解决各种技术问题。

微波光电部专业代理经销高频、微波、光纤、光电元器件、组件、部件、模块、整机；电磁兼容元器件、材料、设备；微波 CAD、EDA 软件、开发测试仿真工具；微波、光纤仪器仪表。欢迎国外高科技微波、光纤厂商将优秀产品介绍到中国、共同开拓市场。长期大量现货专业批发高频、微波、卫星、光纤、电视、CATV 器件：晶振、VCO、连接器、PIN 开关、变容二极管、开关二极管、低噪晶体管、功率电阻及电容、放大器、功率管、MMIC、混频器、耦合器、功分器、振荡器、合成器、衰减器、滤波器、隔离器、环行器、移相器、调制解调器；光电子器件和组件：红外发射管、红外接收管、光电开关、光敏管、发光二极管和发光二极管组件、半导体激光二极管和激光器组件、光电探测器和光接收组件、光发射接收模块、光纤激光器和光放大器、光调制器、光开关、DWDM 用光发射和接收器件、用户接入系统光收发器件与模块、光纤连接器、光纤跳线/尾纤、光衰减器、光纤适配器、光隔离器、光耦合器、光环行器、光复用器/转换器；无线收发芯片和模组、蓝牙芯片和模组。

更多产品请看本公司产品专用销售网站：

商斯达微波光电产品网：[HTTP://www.rfoe.net/](http://www.rfoe.net/)

商斯达中国传感器科技信息网：<http://www.sensor-ic.com/>

商斯达工控安防网：<http://www.pc-ps.net/>

商斯达电子元器件网：<http://www.sunstare.com/>

商斯达消费电子产品网：<http://www.icasic.com/>

商斯达实业科技产品网：<http://www.sunstars.cn/> 射频微波光电元器件销售热线：

地址：深圳市福田区福华路福庆街鸿图大厦 1602 室

电话：0755-83396822 83397033 83398585 82884100

传真：0755-83376182 (0) 13823648918 MSN: [SUNS8888@hotmail.com](mailto:SUNS8888@hotmail.com)

邮编：518033 E-mail:[szss20@163.com](mailto:szss20@163.com) QQ: 195847376

深圳赛格展销部：深圳华强北路赛格电子市场 2583 号 电话：0755-83665529 25059422

技术支持：0755-83394033 13501568376

欢迎索取免费详细资料、设计指南和光盘；产品凡多，未能尽录，欢迎来电查询。

北京分公司：北京海淀区知春路 132 号中发电子大厦 3097 号

TEL: 010-81159046 82615020 13501189838 FAX: 010-62543996

上海分公司：上海市北京东路 668 号上海赛格电子市场 D125 号

TEL: 021-28311762 56703037 13701955389 FAX: 021-56703037

西安分公司：西安高新开发区 20 所(中国电子科技集团导航技术研究所)

西安劳动南路 88 号电子商城二楼 D23 号

TEL: 029-81022619 13072977981 FAX:029-88789382