



# ATA7603

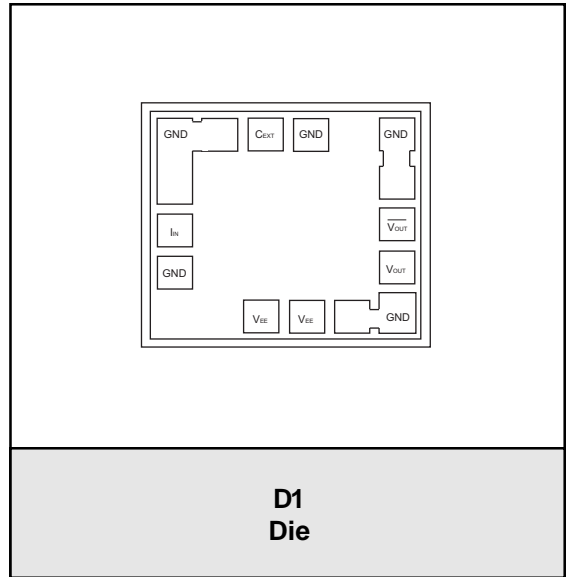
10 Gb/s High Overload TIA  
PRELIMINARY DATA SHEET - Rev 1.0

## FEATURES

- 1800  $\Omega$  Differential Transimpedance
- 3 mApp Maximum Input Current
- 14 pA/ $\sqrt{\text{Hz}}$  Input Noise Current Density
- Single  $-5.2$  V Power Supply
- Low Group Delay
- Outputs DC or AC Coupled

## APPLICATIONS

- SONET/SDH OC-192 /STM-64 VSR, Short-Reach, Intermediate-Reach, and Long-Reach Receivers
- 10 Gb/s Ethernet
- Fiber optic receivers, transceivers, and transponders



## PRODUCT DESCRIPTION

The ANADIGICS ATA7603 is a  $-5.2$  V high-speed transimpedance amplifier (TIA) designed for 10 Gb/s optical receiver applications available in bare die form and manufactured using an InGaP based HBT process. The device is used in conjunction with a photodetector to convert an optical signal into a differential output voltage that can be AC or DC coupled to a post amplifier. The

ATA7603 has an internal overload support circuit and can accept optical inputs as high as  $+3$  dBm. With its low noise and high optical overload capability, the device is well suited for 10 Gb/s Ethernet and OC-192 Very Short-Reach (VSR), Short-Reach, Intermediate-Reach and Long-Reach optical receivers, transceivers and transponders.

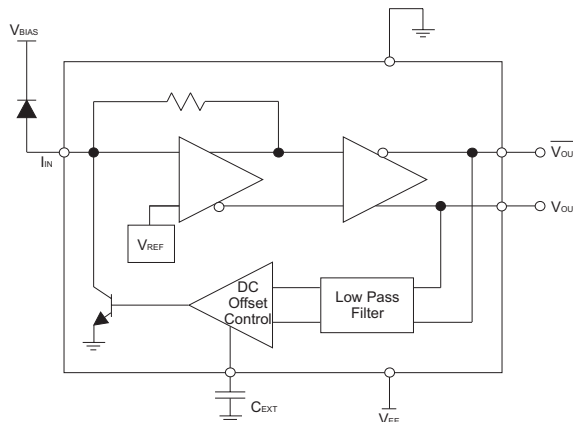
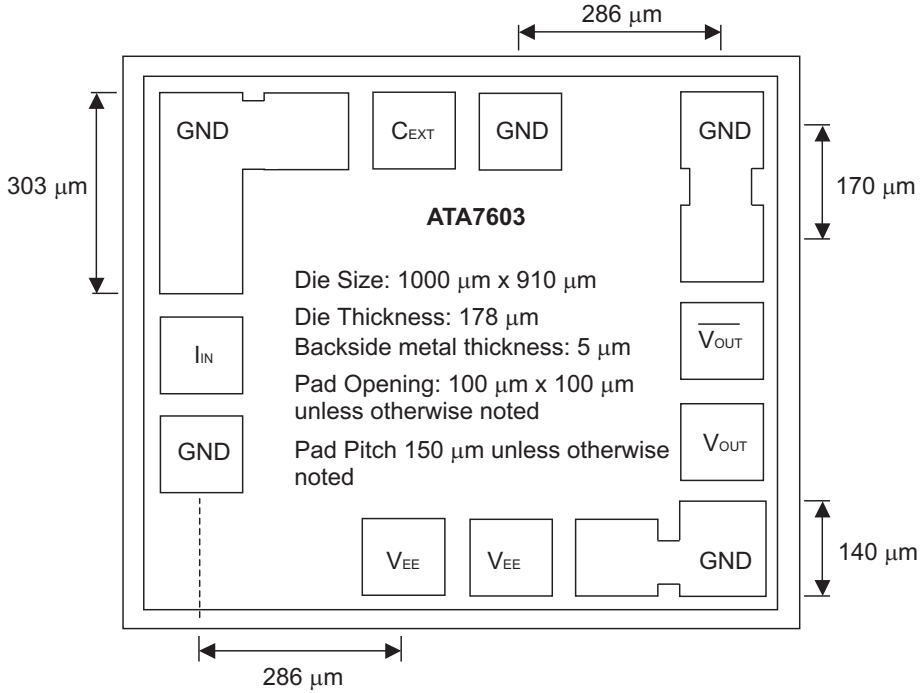


Figure 1: Circuit Block Diagram



**Figure 2: Die Size and Layout**

**Table 1: Pad Description**

PAD	DESCRIPTION	COMMENTS
V <sub>EE</sub>	Negative Supply Voltage	-5.2 V
GND	Ground	
I <sub>IN</sub>	TIA Input	Photocurrent input
C <sub>EXT</sub>	Connection for an External Capacitor	Sets the low frequency cutoff
V <sub>OUT</sub>	Non-inverted Output Voltage	Logical '1' with optical input
$\overline{V_{OUT}}$	Inverted Output Voltage	Logical '0' with optical input

**ELECTRICAL CHARACTERISTICS****Table 2: Absolute Minimum and Maximum Ratings**

PARAMETER	MIN	MAX	UNIT
DC Power Supply ( $V_{EE}$ )	-7.0	1.0	V
Storage Temperature	-65	125	°C
DC Input Current	-	5.0	mA
ESD Sensitivity (Human Body Model)	100	-	V

**Stresses in excess of the absolute ratings may cause permanent damage. Functional operation is not implied under these conditions. Exposure to absolute ratings for extended periods of time may adversely affect reliability.**

**Table 3: Recommended Operating Conditions**

PARAMETER	MIN	TYP	MAX	UNIT
Operating Voltage Range	-5.50	-5.2	-4.90	V
Operating Temperature Range	-40	-	85	°C
Die Attach Temperature	-	-	260	°C
Photodiode Capacitance (PIN + stray)	-	0.225	0.3	pF
Photodiode Responsivity	-	0.92	-	A/W
Photodiode Contact Resistance	-	10	15	$\Omega$
Input Bondwire Inductance	0.7	1.0	-	nH

**The device may be operated safely over these conditions; however, parametric performance is guaranteed only over the conditions defined in the electrical specifications.**

Table 4: DC Electrical Specifications

PARAMETER	MIN	TYP	MAX	UNIT
Supply Current (DC Coupled Outputs)	-	95	120	mA
Input Offset Voltage	-	-3.7	-	V
Output Offset Voltage (both ports)	-	-0.2	-	V

Table 5: AC Electrical Specifications <sup>(1)</sup>

PARAMETER	MIN	TYP	MAX	UNIT
Small Signal Differential Transimpedance ( $R_L = 100 \Omega$ )	1300	1800	-	$\Omega$
Small Signal Bandwidth	8.5	9.5	-	GHz
Low Frequency Cutoff <sup>(2)</sup>	-	30	-	kHz
Peaking	-	-	1.0	dB
Group Delay Deviation (500 MHz to 8.0 GHz) <sup>(3)</sup>	-	30	-	ps
Group Delay Deviation (8 GHz to 9.5 GHz) <sup>(3)</sup>	-	40	-	ps
Maximum Input Current	-	-	3.0	mApp
Optical Overload <sup>(4)</sup>	-	+3	-	dBm
Input Referred RMS Noise Current <sup>(5)</sup>	-	1.4	-	$\mu$ A
Average Input Referred Noise Current Density <sup>(5)</sup>	-	14	20	pA $\sqrt$ /Hz
Optical Sensitivity <sup>(4)</sup>	-	-19	-	dBm
Maximum Single-ended Output Voltage Swing	-	400	-	mVpp
Output Return Loss (10 MHz to 8 GHz)	-	-	-10	dB
Output Return Loss (8 MHz to 20 GHz)	-	-	-5	dB

## Notes:

- (1) The specifications are based upon the use of a PIN photodiode with a responsivity of 0.92 A/W and a capacitance of  $C_{DIODE} + C_{STRAY} = 0.3$  pF max connected to  $I_{IN}$  via a 1.0 nH bond wire.
- (2) With the use of an external 10 nF capacitor.
- (3) Maximum value - minimum value
- (4) Measured at  $10^{-10}$  BER with a  $2^{23} - 1$  PRBS at 10 Gb/s
- (5) Bandwidth = 9 GHz

PERFORMANCE DATA

Figure 3: Typical Small Signal Frequency Response

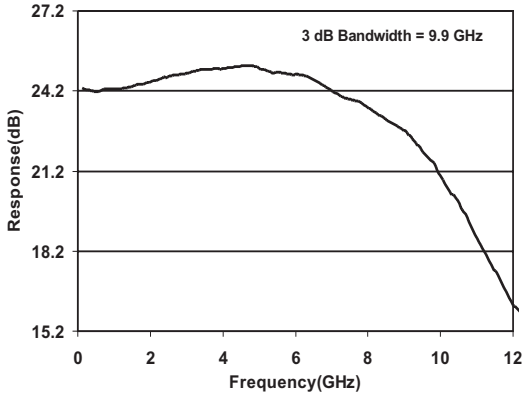


Figure 4: Typical Small Signal Group Delay

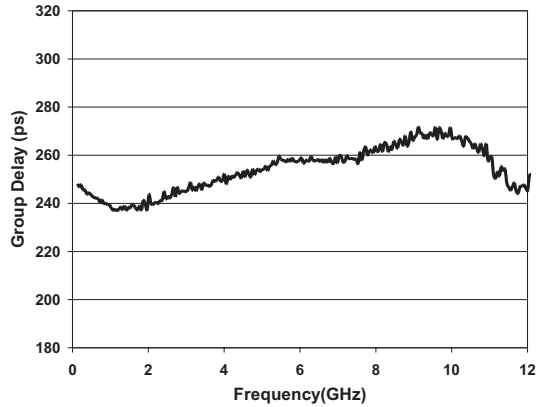


Figure 5: Bandwidth vs. Input Inductance

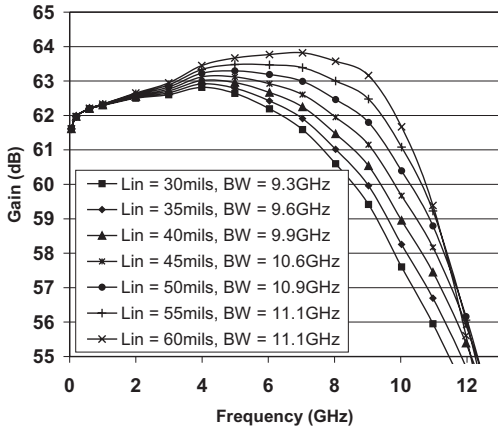


Figure 6: Differential Transimpedance vs. Input Current

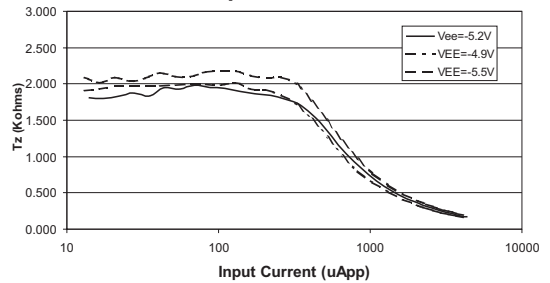


Figure 7: Differential Output Voltage vs. Input Current up to 1000  $\mu$ App

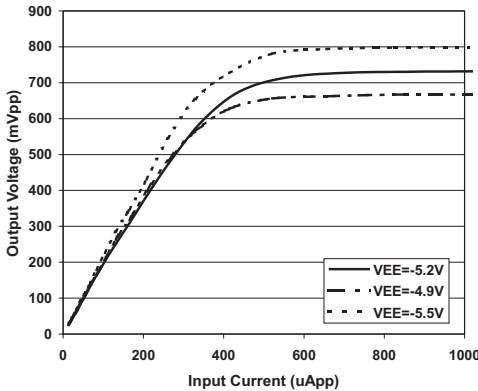


Figure 8: Differential Output Voltage vs. Input Current up to 4000  $\mu$ App

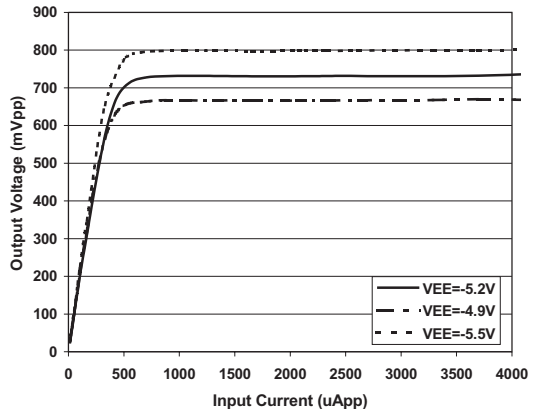


Figure 9: Eye Diagram with an Optical Input Power of -18 dBm

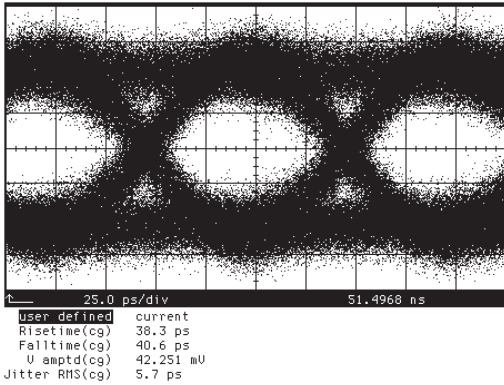


Figure 10: Eye Diagram with an Optical Input Power of -10 dBm

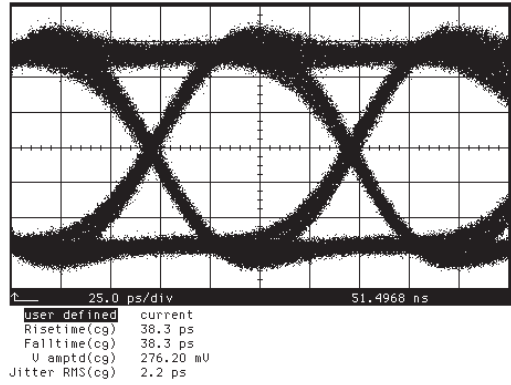


Figure 11: Eye Diagram with an Optical Input Power of 0 dBm

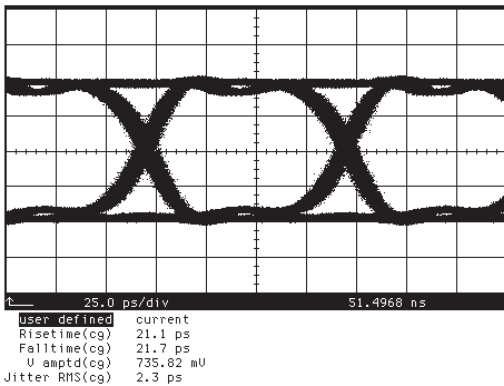


Figure 12: Eye Diagram with an Optical Input Power of +3 dBm

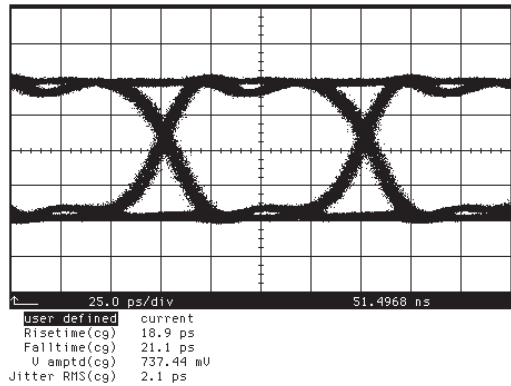


Figure 13: Eye Diagram with an Optical Input Power of +4 dBm

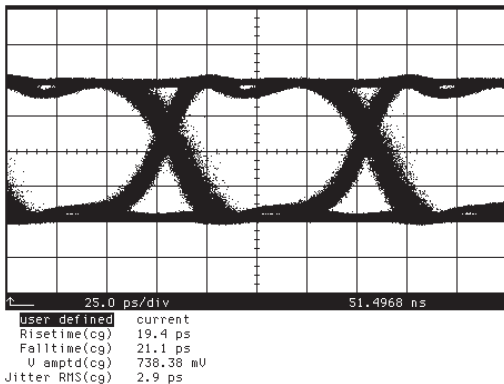
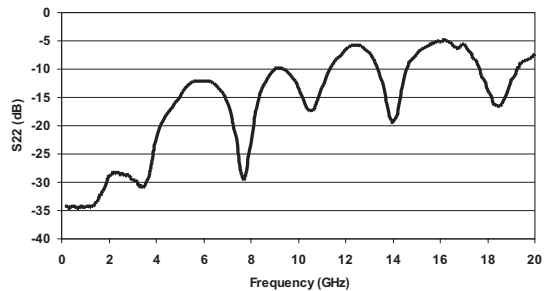


Figure 14: S22 from Evaluation Test Fixture



## APPLICATION INFORMATION

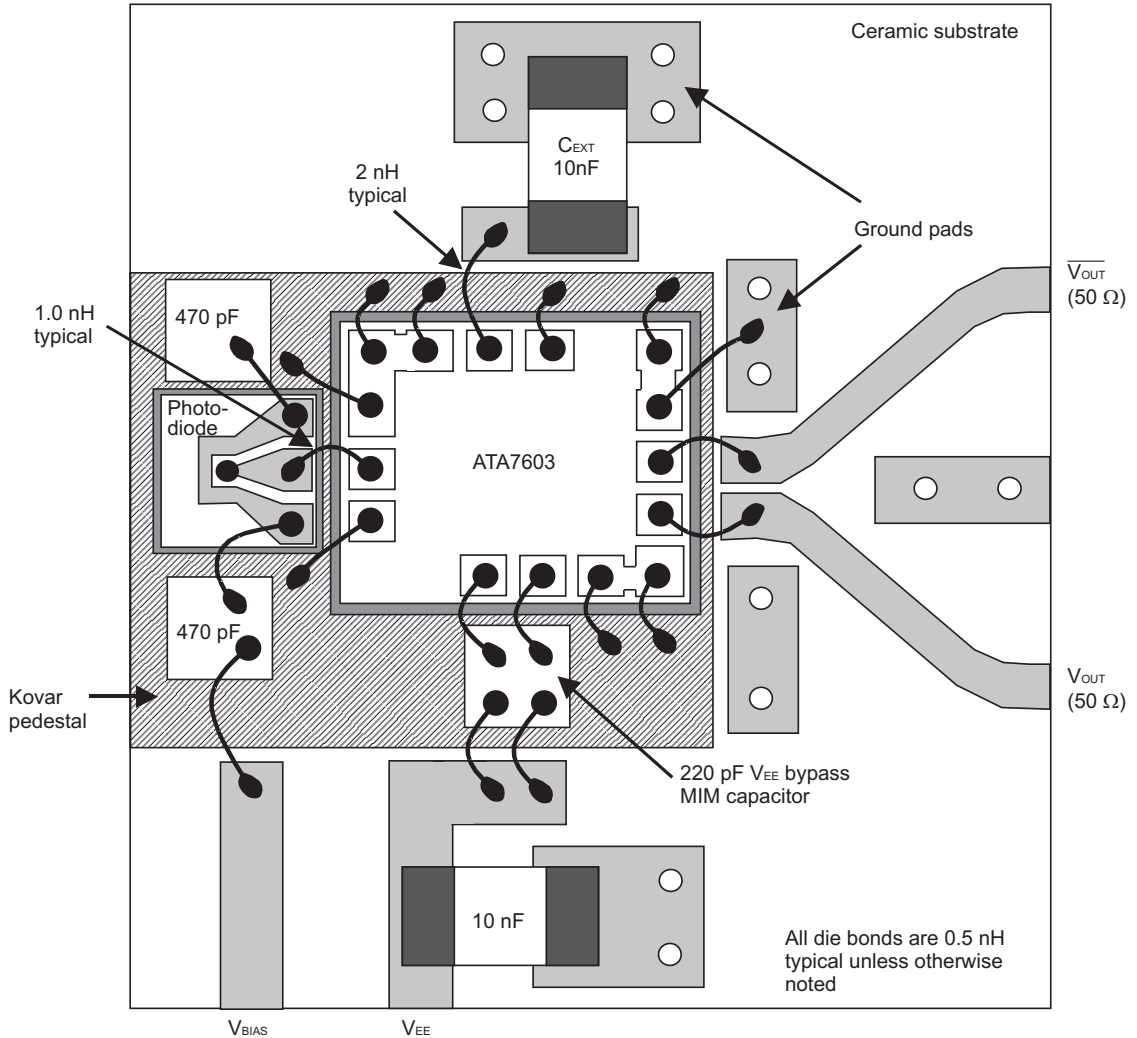


Figure 15: Bonding Diagram

**PACKAGING**

The ATA7603 is provided as bare die. For optimum performance, the die should be packaged in a hermetic enclosure and a low inductance ground plane should be made available for power supply bypassing and ground bonds. When packaging the ATA7603, the temperature of the die must be kept below 260 °C to ensure device reliability. The ATA7603 has backside metal but no ground vias are connected to the backside of the die, so it is critical to bond all of the ground pads to reduce ground inductance. The die can be attached to the substrate using epoxy or solder. A good thermally conductive, silver-filled epoxy is recommended for epoxy mounting. If solder is used for die attach, exposure to temperatures at or above 260 °C must be limited to ensure the device reliability. A soft silicon/rubber tip collet should be used for die mounting, although tweezers can be used with extreme care.

Thermosonic ball bonding, at a stage temperature of 150 to 175 °C, with 1 to 1.3 mil gold wire, is the recommended interconnect technique. The bond force, time, and ultrasonic power are all critical parameters and should be optimized to achieve the best bonding performance. The recommended bonding parameters are:

Stage Temperature: 175 °C  
Bond Time: 15 ms  
Bond Ultrasonic Power: 70 mW  
Bond Force: 70 g  
Bond Velocity: 60 mils/ms

**I<sub>IN</sub> Connection**

For optimal performance, the bond wire from the photodetector to I<sub>IN</sub> should be around 1nH. As the inductance of this connection increases beyond 1nH, more gain peaking will occur and the group delay performance will degrade.

**V<sub>EE</sub> Connections**

In order to achieve optimal performance, the V<sub>EE</sub> supply pads must be bypassed as close to the chip as possible with one or two high resonant frequency, low value capacitance, MIM capacitors. In either case, both V<sub>EE</sub> bond pads need to be connected to reduce the supply bond wire inductance.

**V<sub>OUT</sub> and  $\overline{V}_{OUT}$  Connections**

The ATA7603 provides a differential output that can be AC or DC coupled to the next stage of the receiver. The output bond wires should be kept below 1 nH for the best performance. If the device is being used in a single-ended configuration, the unused output port must be terminated into 50 Ω.

**C<sub>EXT</sub> Connection**

In order to achieve the desired low frequency cutoff, an external capacitor is required. A low inductance multilayer chip capacitor of value 10 nF is recommended.



## TYPICAL APPLICATION CIRCUITS

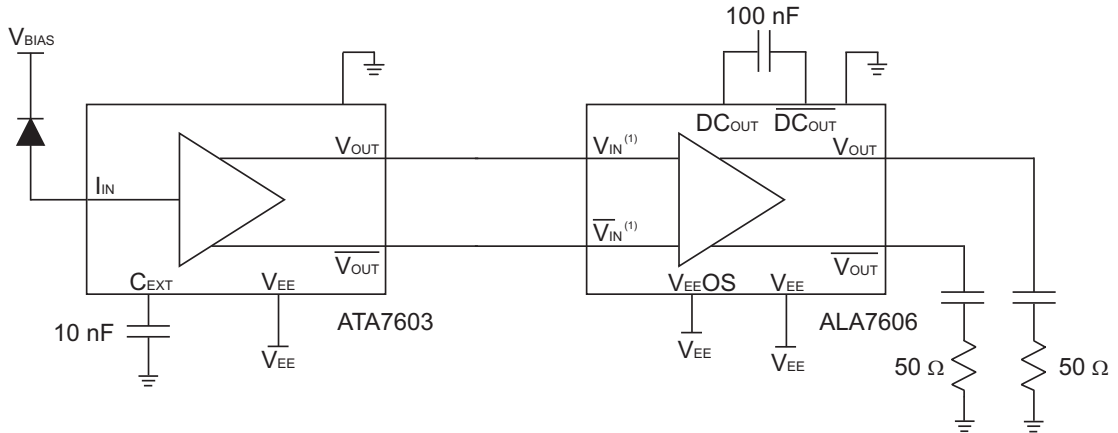


Figure 16: ATA7603 DC Coupled to the ALA7606

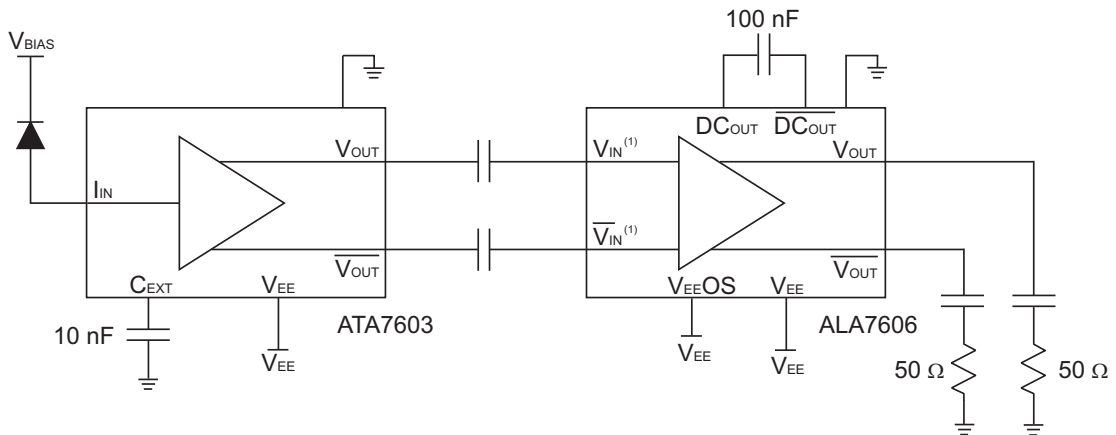


Figure 17: ATA7603 AC Coupled to the ALA7606

## Notes:

(1) The ALA7606 is a non-inverting amplifier and  $V_{IN}^{(1)}$  and  $\overline{V_{IN}^{(1)}}$  can be interchanged.

**ATA7603**

SUNSTAR微波光电 <http://www.rfoe.net/> TEL:0755-83396822 FAX:0755-83376182 E-MAIL:szss20@163.com

**NOTES**

**NOTES**

**ORDERING INFORMATION**

ORDER NUMBER	TEMPERATURE RANGE	PACKAGE DESCRIPTION	COMPONENT PACKAGING
ATA7603D1	-40 °C to +85 °C	D1	Die

**ANADIGICS, Inc.**

141 Mount Bethel Road  
Warren, New Jersey 07059, U.S.A.

Tel: +1 (908) 668-5000

Fax: +1 (908) 668-5132

URL: <http://www.anadigics.com>

E-mail: [Mktg@anadigics.com](mailto:Mktg@anadigics.com)

**IMPORTANT NOTICE**

ANADIGICS, Inc. reserves the right to make changes to its products or to discontinue any product at any time without notice. The product specifications contained in Advanced Product Information sheets and Preliminary Data Sheets are subject to change prior to a product's formal introduction. Information in Data Sheets have been carefully checked and are assumed to be reliable; however, ANADIGICS assumes no responsibilities for inaccuracies. ANADIGICS strongly urges customers to verify that the information they are using is current before placing orders.

**WARNING**

ANADIGICS products are not intended for use in life support appliances, devices or systems. Use of an ANADIGICS product in any such application without written consent is prohibited.

SUNSTAR 商斯达实业集团是集研发、生产、工程、销售、代理经销、技术咨询、信息服务等为一体的高科技企业，是专业高科技电子产品生产厂家，是具有 10 多年历史的专业电子元器件供应商，是中国最早和最大的仓储式连锁规模经营大型综合电子零部件代理分销商之一，是一家专业代理和分销世界各大品牌 IC 芯片和电子元器件的连锁经营综合性国际公司，专业经营进口、国产名厂名牌电子元件，型号、种类齐全。在香港、北京、深圳、上海、西安、成都等全国主要电子市场设有直属分公司和产品展示展销窗口门市部专卖店及代理分销商，已在全国范围内建成强大统一的供货和代理分销网络。我们专业代理经销、开发生产电子元器件、集成电路、传感器、微波光电元器件、工控机/DOC/DOM 电子盘、专用电路、单片机开发、MCU/DSP/ARM/FPGA 软件硬件、二极管、三极管、模块等，是您可靠的一站式现货配套供应商、方案提供商、部件功能模块开发配套商。商斯达实业公司拥有庞大的资料库，有数位毕业于著名高校——有中国电子工业摇篮之称的西安电子科技大学（西军电）并长期从事国防尖端科技研究的高级工程师为您精挑细选、量身订做各种高科技电子元器件，并解决各种技术问题。

微波光电部专业代理经销高频、微波、光纤、光电元器件、组件、部件、模块、整机；电磁兼容元器件、材料、设备；微波 CAD、EDA 软件、开发测试仿真工具；微波、光纤仪器仪表。欢迎国外高科技微波、光纤厂商将优秀产品介绍到中国、共同开拓市场。长期大量现货专业批发高频、微波、卫星、光纤、电视、CATV 器件：晶振、VCO、连接器、PIN 开关、变容二极管、开关二极管、低噪晶体管、功率电阻及电容、放大器、功率管、MMIC、混频器、耦合器、功分器、振荡器、合成器、衰减器、滤波器、隔离器、环行器、移相器、调制解调器；光电子器件和组件：红外发射管、红外接收管、光电开关、光敏管、发光二极管和发光二极管组件、半导体激光二极管和激光器组件、光电探测器和光接收组件、光发射接收模块、光纤激光器和光放大器、光调制器、光开关、DWDM 用光发射和接收器件、用户接入系统光收发器件与模块、光纤连接器、光纤跳线/尾纤、光衰减器、光纤适配器、光隔离器、光耦合器、光环行器、光复用器/转换器；无线收发芯片和模组、蓝牙芯片和模组。

更多产品请看本公司产品专用销售网站：

商斯达中国传感器科技信息网：<http://www.sensor-ic.com/>

商斯达工控安防网：<http://www.pc-ps.net/>

商斯达电子元器件网：<http://www.sunstare.com/>

商斯达微波光电产品网：[HTTP://www.rfoe.net/](http://www.rfoe.net/)

商斯达消费电子产品网：<http://www.icasic.com/>

商斯达实业科技产品网：<http://www.sunstars.cn/> 微波元器件销售热线：

地址：深圳市福田区福华路福庆街鸿图大厦 1602 室

电话：0755-82884100 83397033 83396822 83398585

传真：0755-83376182 (0) 13823648918 MSN: SUNS8888@hotmail.com

邮编：518033 E-mail:szss20@163.com QQ: 195847376

深圳赛格展销部：深圳华强北路赛格电子市场 2583 号 电话：0755-83665529 25059422

技术支持：0755-83394033 13501568376

欢迎索取免费详细资料、设计指南和光盘；产品凡多，未能尽录，欢迎来电查询。

北京分公司：北京海淀区知春路 132 号中发电子大厦 3097 号

TEL: 010-81159046 82615020 13501189838 FAX: 010-62543996

上海分公司：上海市北京东路 668 号上海赛格电子市场 D125 号

TEL: 021-28311762 56703037 13701955389 FAX: 021-56703037

西安分公司：西安高新开发区 20 所(中国电子科技集团导航技术研究所)

西安劳动南路 88 号电子商城二楼 D23 号

TEL: 029-81022619 13072977981 FAX:029-88789382