



# The Handling and Bonding of Beam Lead Devices Made Easy

## INTRODUCTION

Beam lead devices are particularly suited for hybrid integrated circuits where low parasitics and small size are prime requirements. Available as single units or monolithic quads, the beam lead devices have made high packing density and superior performance easily achievable in hybrid circuits.

HP offers single beam lead devices in four different outlines—05 and 10 for Schottky diodes, 06 and 07 for PIN diodes. A picture of the HPND-4001 PIN diode in outline 07 appears in Figure 1. As typical of the single beam lead devices, this beam lead PIN diode consists of a silicon chip with coplanar plated gold tabs (beam leads measuring barely 5 mils wide and 0.5 mil thick) 9 mils beyond the edge. The detailed dimensions of outline 07 shown in Figure 2 illustrate the small size of the beam lead package, which results in little space needed in a circuit. The low package parasitics allow the achievement of maximum performance for the beam

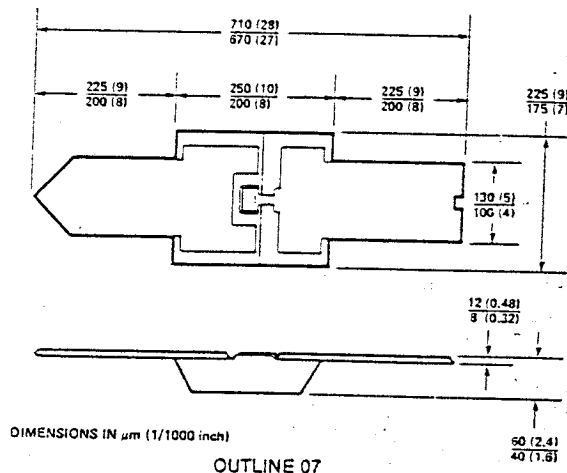


Figure 2. The dimensions of outline 07 are indicative of the small size of the beam lead package, resulting in little space needed in a circuit.

lead diode. The construction of the beam lead diode is designed to offer exceptional lead strength without sacrificing electrical performance.

The beam lead ring quad as shown in Figure 3 provides four Schottky diodes connected in anode to cathode arrangement with a lead at each corner. The monolithic construction assures uniform characteristics for the four diodes—a feature that is essential for optimum performance in double balanced mixer applications. These quads are available in outlines 03 and 08. The quad shown, consisting of four Schottky diodes in outline 03, provides capacitance below 0.2 pF for high frequency applications. The small size of the quad is apparent in the detailed drawing of outline 03 shown in Figure 4. As in the case of single devices, the monolithic beam lead quads are useful in conserving space and maximizing performance in hybrid circuits.

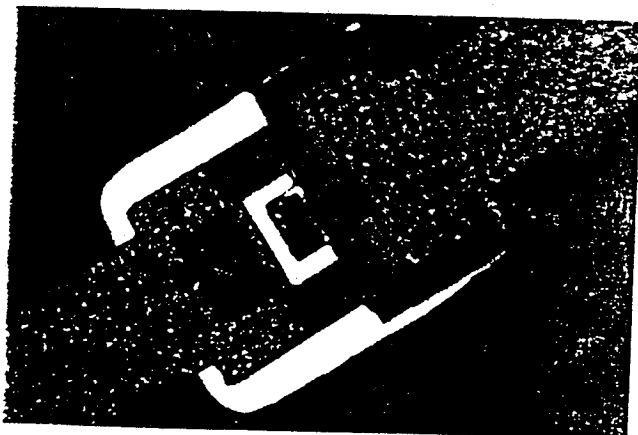


Figure 1. The HPND-4001 beam lead PIN diode in outline 07 shown here provides low capacitance of 0.07 pF and less than 0.1 nH inductance to allow the achievement of maximum isolation and minimum insertion loss at high frequencies.

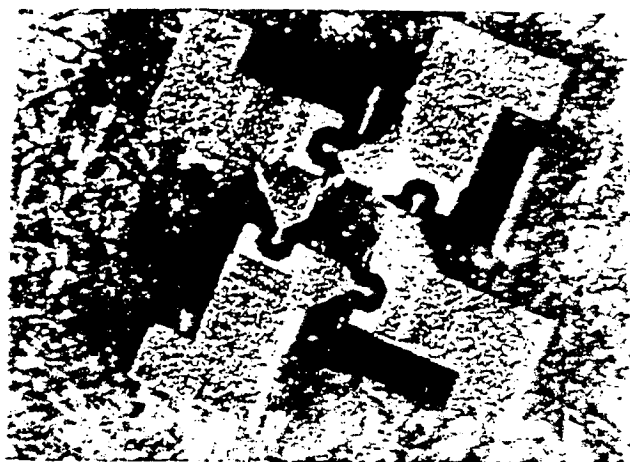


Figure 3. A beam lead ring quad of four Schottky diodes in outline 03 provides capacitance below 0.2 pF for high frequency operation.

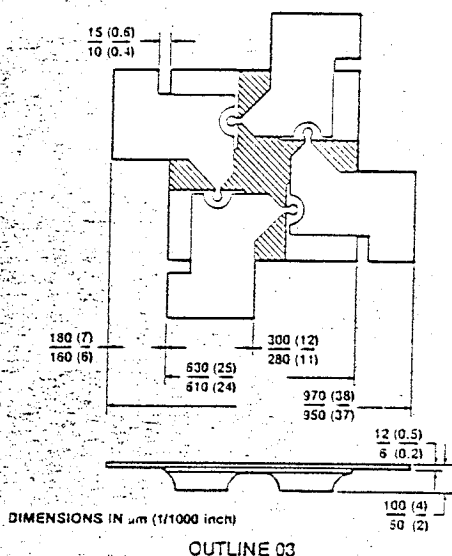


Figure 4. The small size of outline 03 would conserve space in a hybrid circuit.

## HANDLING

In order to avoid damage to the mechanical and electrical characteristics of beam lead devices, particular care must be exercised in the handling of these devices during inspection, testing, and assembly. Although the construction of the beam lead devices is designed to have exceptional lead strength, the small size and delicate nature of the devices require that special handling techniques be observed so that the devices would not be mechanically or electrically damaged.

Beam lead devices are usually shipped in a flat, plastic container known as a "beam pack" or "gel pack" shown in Figure 5. Designed for transporting beam lead devices, this beam pack is coated at the bottom of the container with a thin layer of adhesive silicone (sylgard) to which the devices adhere. A maximum of 50 units can

be placed in each container. The devices are covered with a sheet of anti-static polyester fabric before the lid of the container is closed. This type of container has several attractive features. Each device is kept at a fixed location, apart from any other device, therefore avoiding any damage as a result of mutual collisions. Furthermore, the devices can be visually inspected while still in the container. Since the devices are very small, the inspection, loading and assembly processes are accomplished with the aid of magnification by a microscope.

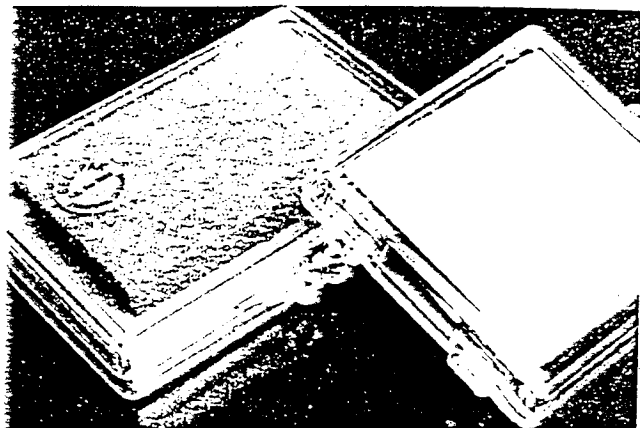
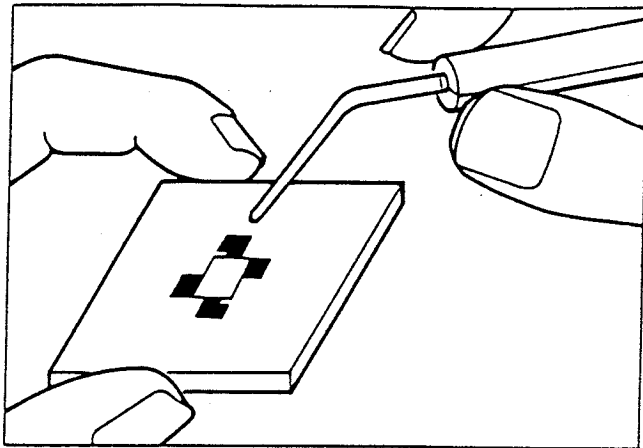


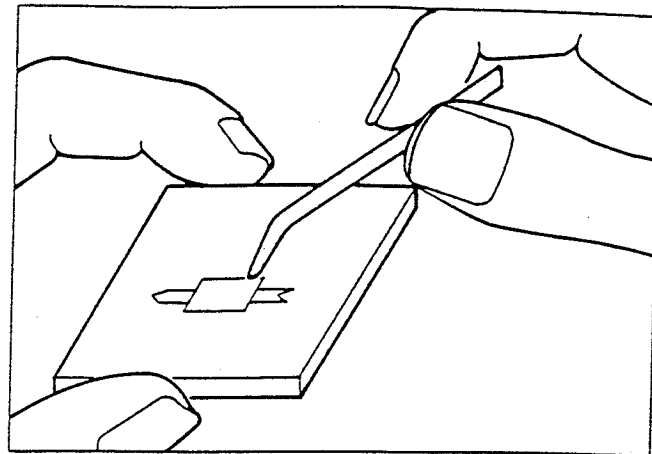
Figure 5. Designed for shipping beam lead devices, the beam pack (gel pack) contains a layer of adhesive silicone at the bottom of the container so the devices will adhere to it.

A vacuum pickup (Figure 6a) is recommended for picking up beam lead devices, particularly larger ones, e.g., quads. Care must be exercised to assure that the vacuum opening of the needle be sufficiently small to avoid passage of the device through the opening. A #27 tip is recommended for picking up single beam lead devices. A 20X magnification is needed for precise positioning of the tip on the device. Where a vacuum pickup is not used, a sharpened wooden Q-tip (Figure 6b) dipped in iso-propyl alcohol is very commonly used to handle beam lead devices. A device will adhere to the end of the Q-tip without danger of being mechanically or electrically damaged. It can then be placed at the designated location. An experienced operator will sometimes use a tweezer (one half of a pair of tweezers as shown in Figure 6c) to pick up beam lead devices. In this case the tweezer should be dulled and used as a probe, allowing a device to adhere to the tip. If the tweezer is used as a pair of tweezers to hold the device, the beam leads can be deformed. Another very efficient pickup tool (1) for beam lead devices is shown in Figure 6d. It consists of a probe held by a handle at one end. At the opposite end is a teflon tip, to which a beam lead device adheres.

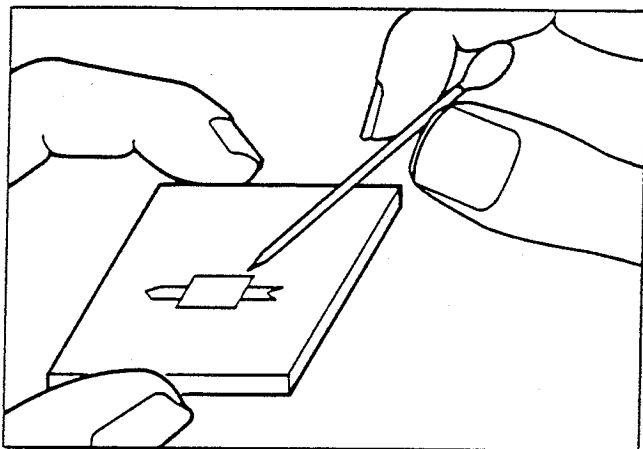
A beam lead device can be destroyed electrically by a static discharge through the device. It must therefore be handled so static effects cannot occur. Contact to the circuit should never be made with the free side of the device because this would allow static electricity from the operator's hand to flow through the device. Instead, the side of the device held should be contacted first. If there is any chance that the two circuit attachment



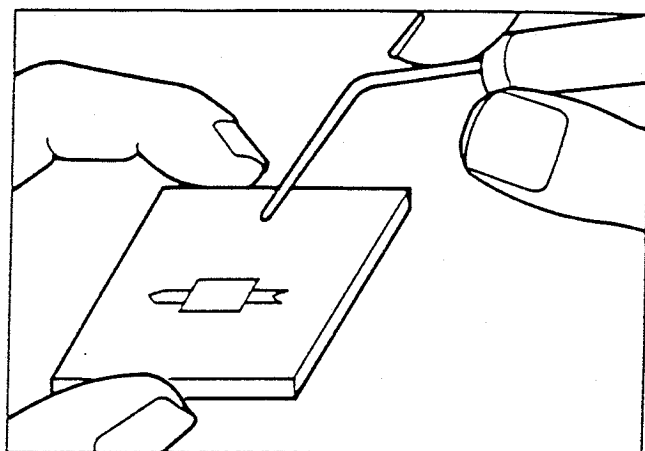
(a) Vacuum pickup is suitable, particularly for larger beam lead devices, e.g., quads.



(c) An experienced operator will sometimes use a tweezer.



(b) A Q-tip dipped in iso-propyl alcohol is very commonly used in industry.



(d) A very efficient commercially available pick up tool has a teflon tip to which the device adheres.

Figure 6. Suitable tools for picking up beam lead devices. (Not drawn to scale)

points are at different potentials, they should be shorted together with a grounding lead before contacting the device. If tweezers are used, they must be electrically grounded to the point where the device is to come in contact. Schottky beam lead diodes are generally susceptible to damage by static discharge. Care in their handling should therefore be exercised. PIN beam lead diodes are not easily damaged by static electricity, so that no additional handling or assembly precautions need be taken except for the usual limitations imposed by the maximum voltage, power, and temperature ratings.

A controlled environment is an important consideration during the storage, handling, and bonding of beam lead devices. Contact metals may be contaminated by impurities in the air. Figure 7 shows the use of a plastic box to provide a pure environment for the storage of beam lead devices. A continuous flow of nitrogen assures an inert atmosphere. Bonding activities should ideally be located under a laminar flow hood as shown in Figure 8 to keep the work area clean. Uni-directional

filtered air flow is provided by the hood to maintain a controlled environment of less than 100 parts per cubic foot of particles greater than 5 micrometers in diameter.

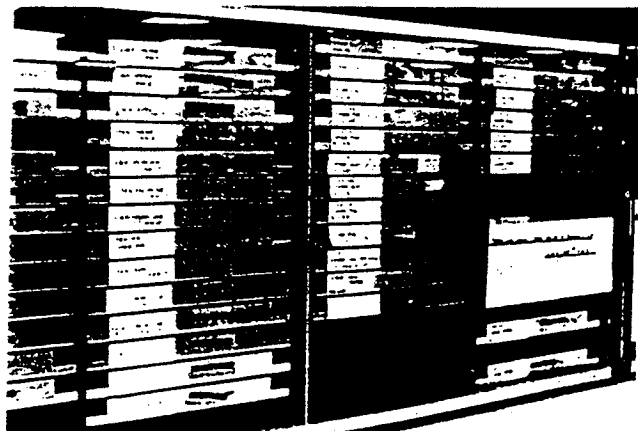


Figure 7. A plastic box is used to provide a controlled environment for the storage of beam lead devices.



Figure 8. A laminar flow hood keeps the work area clean for the handling and bonding of beam lead devices onto circuits.

## BONDING

Thermocompression bonding is recommended for the beam lead devices. Parallel-gap welding can also be used. In either method, the device is positioned face down as illustrated in Figure 9 with the beam leads resting flat on the metallized contact areas of the circuit and bonded using either a heated wedge (thermocompression bonding) or parallel-gap (welding) technique.

Heating of the wedge may be continuous or pulsed. When continuous heating is used, the bonding tool is heated to 300 degrees Celcius and the workstage to 220 degrees Celcius maximum. The pressure applied is 0.024 grams per square micrometer (15 grams per square mil). The bonding time should not exceed 3 seconds for Schottky diodes and 10 seconds for PIN diodes. For pulsed operation, a narrow high current pulse is used to raise the wedge to the required temperature. In the parallel-gap method, current is passed through the substrate metallization and the device lead. The generation of heat is concentrated at the interface between the two, where it is needed to achieve the bonding.

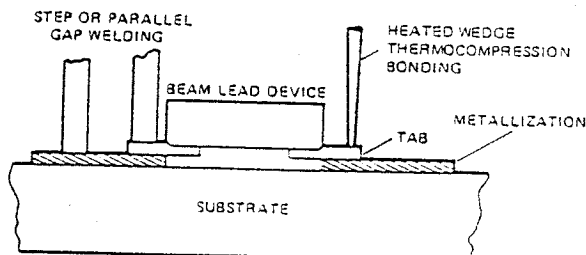


Figure 9. The bonding of the beam lead device is achieved using either a heated wedge (thermocompression bonding) or parallel gap (welding) technique.

The major advantage of pulsed heating techniques is that a cold substrate can be used, generating only localized heating in the vicinity of the bond itself. The electrodes (or wedge) can be placed on the device lead when the bond area is cold and can maintain a constant force through the heating and cooling cycle.

Many commercially available bonders are specifically designed or can be adapted to bond beam lead devices. Shown in Figure 10 is an example of one such bonder which is the Unitek Model 8-150-02 bonder (2). This bonder is basically used for wire bonding. However, with slight modification it can readily be adapted for thermocompression bonding of beam lead devices. Precise control of heat, pressure, and time provided by the equipment is essential in this type of operation. Figure 11 represents a close up view of the accessory equipment (3) used with the Unitek bonder for thermocompression bonding of beam lead devices. The heat and

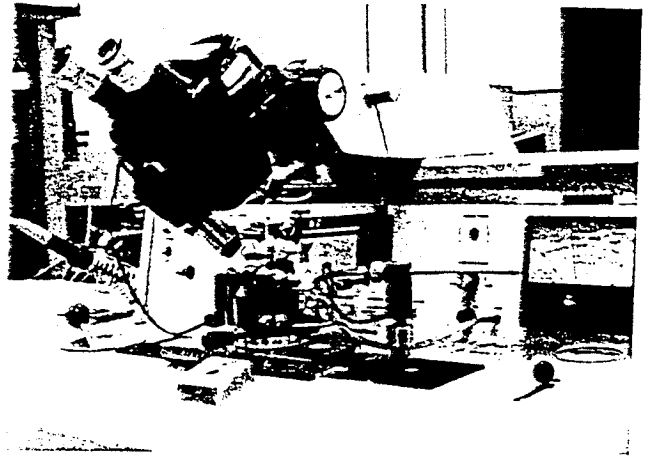


Figure 10. The Unitek Model 8-150-02 bonder is adaptable for the thermocompression bonding of beam lead devices.

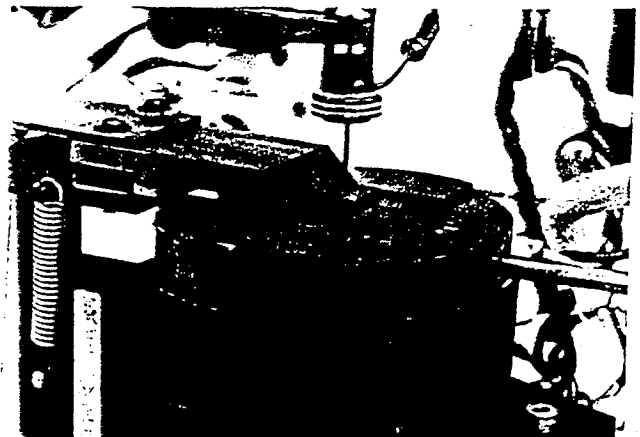


Figure 11. This is a close up view of the equipment used with the Unitek bonder for the thermocompression bonding of beam lead devices.

pressure are applied through use of a silicon carbide tip with a radius of two to three mils. A standard miniature weld head can be used to supply the required tip travel and apply the proper pressure. A heated wedge shank held in the weld head holds the tip and supplies heat to it. The wedge shank is heated by an AC power supply.

The D.P. Veen Model 1250 bonder shown in Figure 12 is typically used for eutectic die attach. Its capabilities include die pick up and place, and manual or automatic scrub. Epoxy or preform die attach can also be performed by this type of bonder. With slight modification it can be adapted for thermocompression bonding of beam lead devices. As illustrated in Figure 13, the D.P. Veen bonder can accept a variety of stages to accommodate various package types, including alumina or copper clad circuit boards. The stage can be programmed to perform customized functions such as automatic indexing.

A basic understanding of the capabilities and requirements of the bonding equipment that is used and careful application of the techniques recommended are

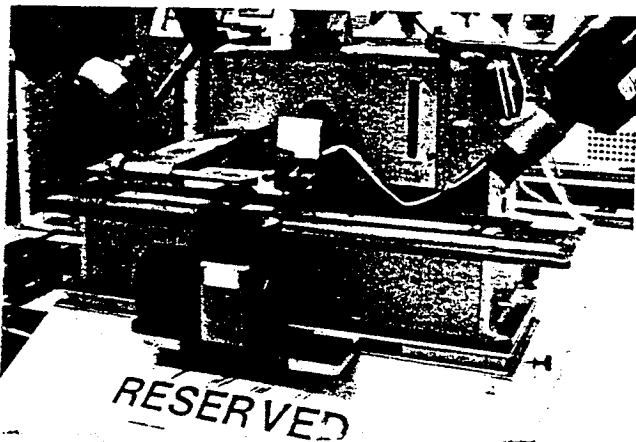


Figure 12. The D.P. Veen Model 1250 bonder can also be adapted for the thermocompression bonding of beam lead devices.

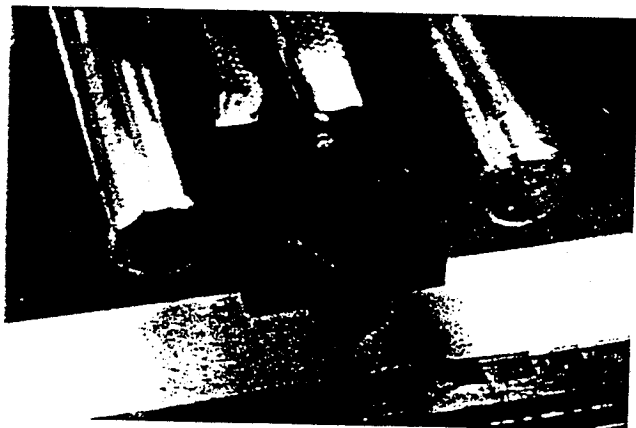


Figure 13. The D.P. Veen bonder can accommodate various package types and circuit boards and perform customized functions such as automatic indexing.

necessary for the achievement of the type of bonds that will not present any long or short term problems to compromise device performance. The following examples will serve to illustrate these points. In Figure 14, where the HPND-4001 beam lead PIN diode is bonded in package C-2, is an example of a good bond reflecting proper use of equipment and techniques. The beam leads of the diode are flat against the contact metalization of the package. The bond is centered on each beam lead with sufficient indentation to effect a strong bond. The chip is intact and there is good continuity between the chip and the beam leads. (The porous material underneath the contact metalization is the ceramic in the package viewed under approximately 150X magnification.) An example of a poorly bonded beam lead diode is shown in Figure 15. The diode is misplaced in

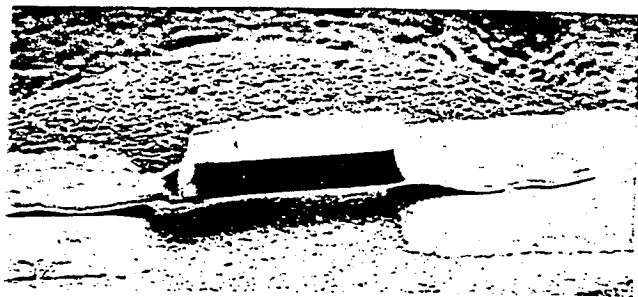


Figure 14. The HPND-4001 beam lead PIN diode bonded in package C-2 shown here is an example of a good bond. The beam leads are flat against the package contact metalization. The bond is centered on each lead with sufficient indentation.

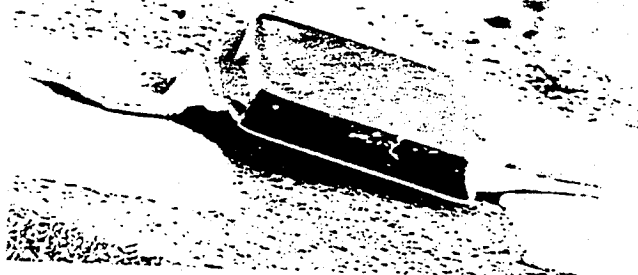


Figure 15. This is an example of a poorly bonded beam lead diode. The cathode lead is folded over, the anode lead is twisted, and the chip is separated from the lead.

the gap. At the cathode end the beam lead is folded over. At the anode end the bonding tool slipped and twisted the beam lead, causing excess strain on the metal to silicon contact and resulting in a separation at the interface. Another example of a poor bond is shown in Figure 16. At the cathode end the bonding tool slipped and smeared, resulting in excess strain on the metal to silicon contact and causing the device to buckle. In the last two examples the reliability of the devices is questionable.

Beam lead quads are not any more difficult to bond than single beam lead devices. The only difference is that there are more points to contact. Identical equipment and techniques can be used to bond single and quad beam lead devices. An example of a good bond for a

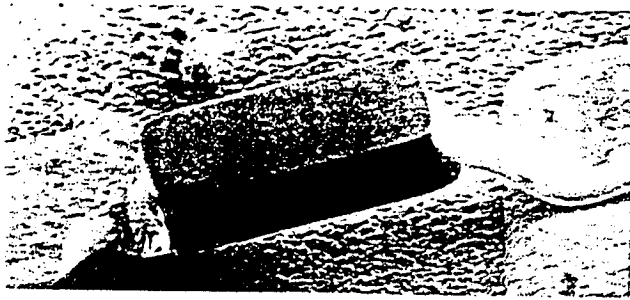


Figure 16. This is another example of a poor bond. The excess strain from bonding tool slippage caused the device to buckle.

beam lead quad is shown in Figure 17. The beam leads are flat on the package leads. The bond is centered on each lead with sufficient indentation. There is no sign of tool slippage or excess strain. This is an outline 03 beam lead quad bonded in package C-4. The 5082-2280 Schottky quad is an example of this combination. An example of a poorly bonded quad is shown in Figure 18. The quad has been pushed to the left. The upper right lead is torn and its diode fractured. Another example of a poor bond is shown in Figure 19. The quad is twisted

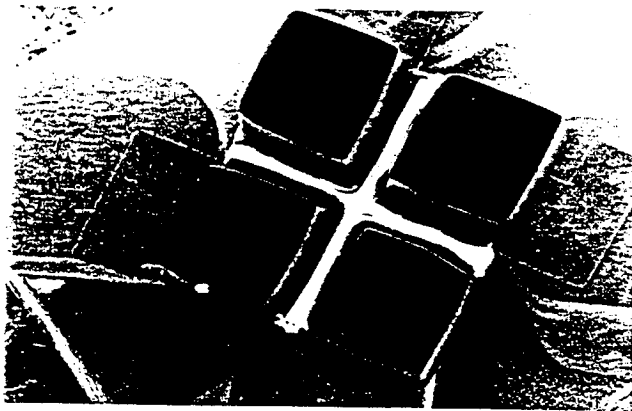


Figure 17. This is an example of a good bond for an outline 03 beam lead quad bonded in package C-4. The beam leads are flat on the package leads. The bond is centered on each lead with sufficient indentation.



Figure 18. This is an example of a poor bond. The quad has been pushed to the left. The upper right lead is torn and its diode fractured.



Figure 19. This is another example of a poorly executed bond. The quad is twisted so badly that the bottom lead has separated.

so badly that the bottom lead has separated. The top lead is not flat on the package. All bonds are located on the edges of the leads rather than centered.

In summary, proper bonding practice will insure the achievement of good bonds on beam leads. The bonds should be centered on each lead with sufficient indentation for achieving a strong bond. The tip of the bonding tool should be oriented perpendicular to the lead to prevent any twisting and damaging of the lead. There must be flexibility in the bonding conditions to meet the needs of a particular circuit. For example, to avoid pressing the beam leads into a soft circuit board, a reduction in bonding pressure and stage temperature would be appropriate.

## CONCLUSION

Beam lead devices are particularly attractive for hybrid circuits because of their low parasitics and small size. The availability of equipment and techniques specifically designed for their small size has facilitated the handling and bonding of these devices. With properly trained assemblers, beam lead devices permit a rapid and inexpensive assembly procedure. The only sophisticated pieces of equipment needed are a microscope and a thermocompression bonder.

## NOTES

- (1) The pickup tool is manufactured by: Tak Products, Inc., 11 Richfield St., Plainview, NY 11803. Handle #800-H, Probe #820, Teflon Tip .020.
- (2) Other manufacturers of similar types of bonders include Hughes, Kulicke & Soffa, Westbond and Tanaka.
- (3) Possible sources for the accessory equipment include Unitek Corp., Tempress Research Co., and Small Precision Tools.

SUNSTAR 商斯达实业集团是集研发、生产、工程、销售、代理经销、技术咨询、信息服务等为一体的高科技企业，是专业高科技电子产品生产厂家，是具有 10 多年历史的专业电子元器件供应商，是中国最早和最大的仓储式连锁规模经营大型综合电子零部件代理分销商之一，是一家专业代理和分销世界各大品牌 IC 芯片和电子元器件的连锁经营综合性国际公司，专业经营进口、国产名厂名牌电子元件，型号、种类齐全。在香港、北京、深圳、上海、西安、成都等全国主要电子市场设有直属分公司和产品展示展销窗口门市部专卖店及代理分销商，已在全国范围内建成强大统一的供货和代理分销网络。我们专业代理经销、开发生产电子元器件、集成电路、传感器、微波光电元器件、工控机/DOC/DOM 电子盘、专用电路、单片机开发、MCU/DSP/ARM/FPGA 软件硬件、二极管、三极管、模块等，是您可靠的一站式现货配套供应商、方案提供商、部件功能模块开发配套商。商斯达实业公司拥有庞大的资料库，有数位毕业于著名高校——有中国电子工业摇篮之称的西安电子科技大学（西军电）并长期从事国防尖端科技研究的高级工程师为您精挑细选、量身订做各种高科技电子元器件，并解决各种技术问题。

微波光电部专业代理经销高频、微波、光纤、光电元器件、组件、部件、模块、整机；电磁兼容元器件、材料、设备；微波 CAD、EDA 软件、开发测试仿真工具；微波、光纤仪器仪表。欢迎国外高科技微波、光纤厂商将优秀产品介绍到中国、共同开拓市场。长期大量现货专业批发高频、微波、卫星、光纤、电视、CATV 器件：晶振、VCO、连接器、PIN 开关、变容二极管、开关二极管、低噪晶体管、功率电阻及电容、放大器、功率管、MMIC、混频器、耦合器、功分器、振荡器、合成器、衰减器、滤波器、隔离器、环行器、移相器、调制解调器；光电子元件和组件：红外发射管、红外接收管、光电开关、光敏管、发光二极管和发光二极管组件、半导体激光二极管和激光器组件、光电探测器和光接收组件、光发射接收模块、光纤激光器和光放大器、光调制器、光开关、DWDM 用光发射和接收器件、用户接入系统光收发器件与模块、光纤连接器、光纤跳线/尾纤、光衰减器、光纤适配器、光隔离器、光耦合器、光环行器、光复用器/转换器；无线收发芯片和模组、蓝牙芯片和模组。

更多产品请看本公司产品专用销售网站：

商斯达中国传感器科技信息网：<http://www.sensor-ic.com/>

商斯达工控安防网：<http://www.pc-ps.net/>

商斯达电子元器件网：<http://www.sunstare.com/>

商斯达微波光电产品网：[HTTP://www.rfoe.net/](http://www.rfoe.net/)

商斯达消费电子产品网：<http://www.icasic.com/>

商斯达实业科技产品网：<http://www.sunstars.cn/> 微波元器件销售热线：

地址：深圳市福田区福华路福庆街鸿图大厦 1602 室

电话：0755-82884100 83397033 83396822 83398585

传真：0755-83376182 (0) 13823648918 MSN: [SUNS8888@hotmail.com](mailto:SUNS8888@hotmail.com)

邮编：518033 E-mail: [szss20@163.com](mailto:szss20@163.com) QQ: 195847376

深圳赛格展销部：深圳华强北路赛格电子市场 2583 号 电话：0755-83665529 25059422

技术支持：0755-83394033 13501568376

欢迎索取免费详细资料、设计指南和光盘；产品凡多，未能尽录，欢迎来电查询。

北京分公司：北京海淀区知春路 132 号中发电子大厦 3097 号

TEL: 010-81159046 82615020 13501189838 FAX: 010-62543996

上海分公司：上海市北京东路 668 号上海赛格电子市场 D125 号

TEL: 021-28311762 56703037 13701955389 FAX: 021-56703037

西安分公司：西安高新开发区 20 所(中国电子科技集团导航技术研究所)

西安劳动南路 88 号电子商城二楼 D23 号

TEL: 029-81022619 13072977981 FAX: 029-88789382