



Main Applications and Selection of Gate Driver Optocouplers

Application Note 1335

Introduction

IGBTs are now commonly used as switching components in both inverter and converter circuits, which are used in power control and motor drive applications. A typical power control and motor drive system shown in Figure 1 requires isolation between the high voltage devices (IGBT/MOSFET) and the low voltage devices (micro-controller). In addition to meeting the severe requirements for the isolation function, Agilent Technologies optocouplers provide customized functionality such as direct gate drive for IGBTs or power MOSFETs. This application note

focuses on the use of Agilent Technologies Gate Drive Optocouplers.

Advantages of Using Optocouplers as Gate Drivers for IGBT/MOSFET

- Low system solution cost
- High reliability and long life
- Variable speed / frequency capability
- Ease and simplicity of design
- Small size and footprint area
- Low power dissipation
- Safe optical isolation (galvanic isolation)
- Regulatory and safety agency approvals

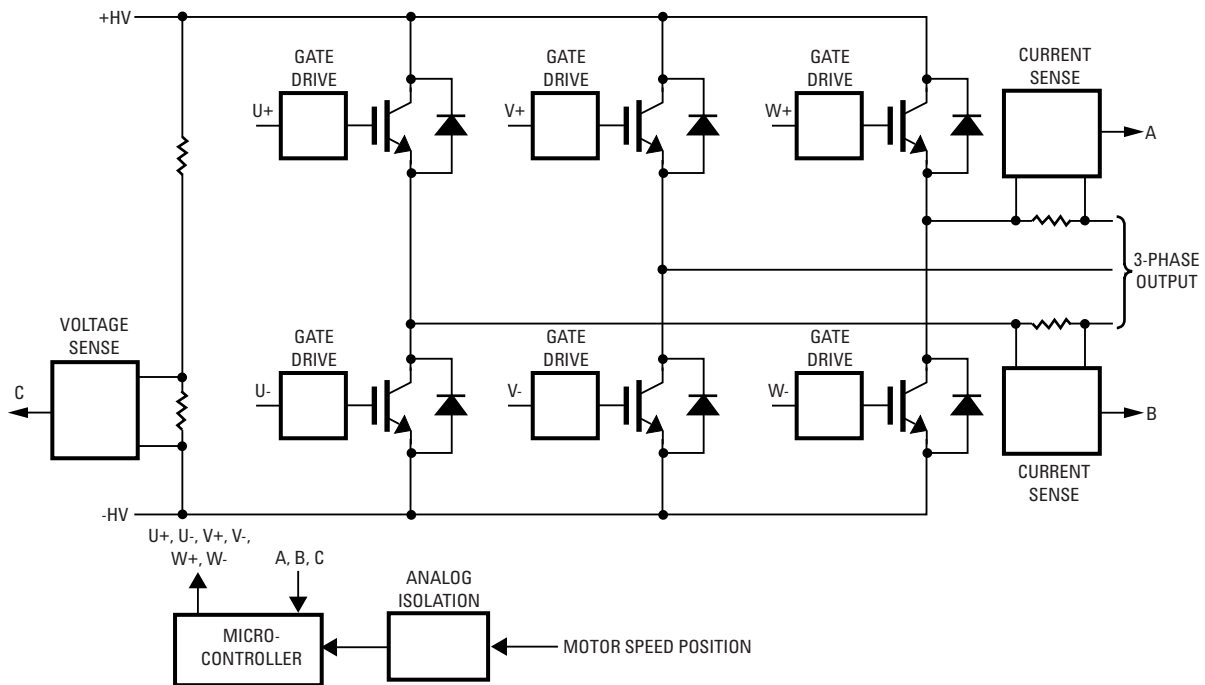


Figure 1. Isolation Circuits for Power Control – System Overview



Block Diagrams of Main Applications of Gate Drive Optocouplers

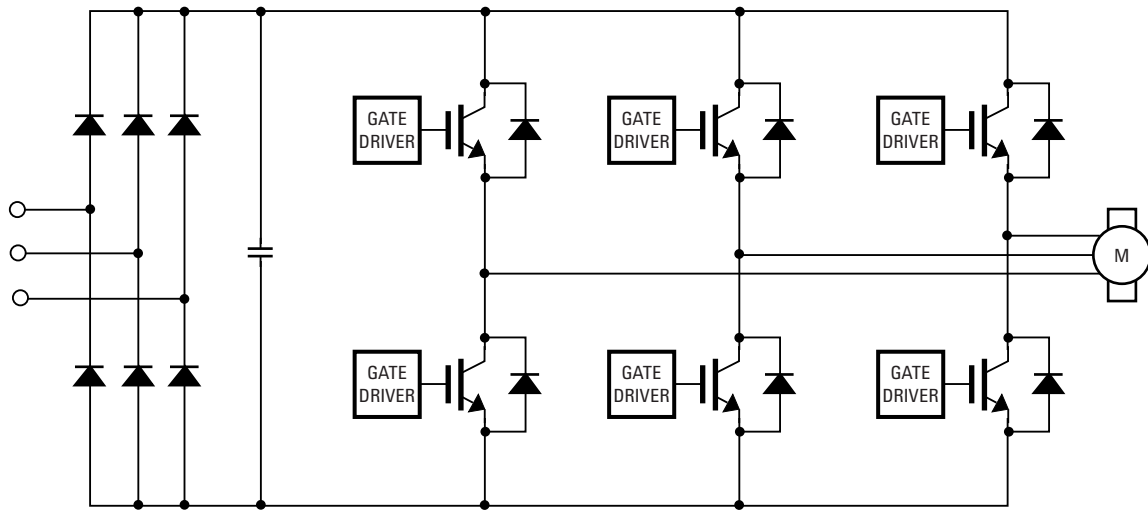


Figure 2. VVVF Inverter (PWM)

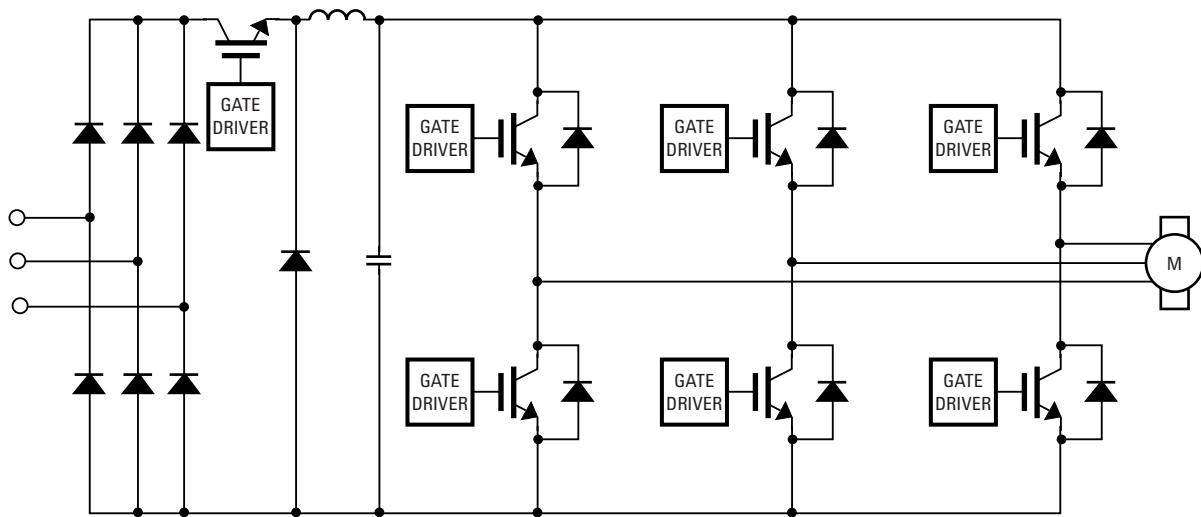


Figure 3. VVVF Inverter (PAM)

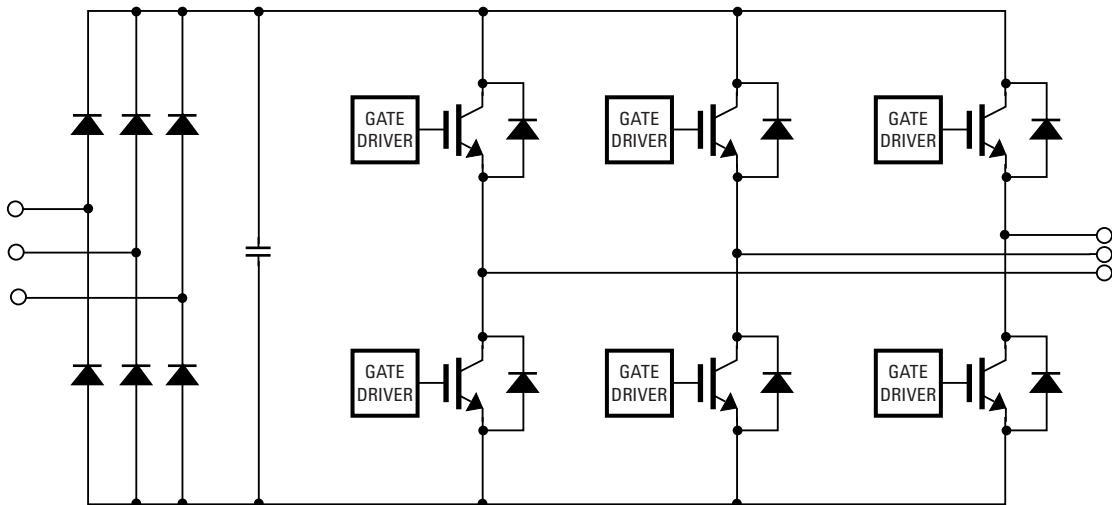


Figure 4. CVCF Inverter (UPS)

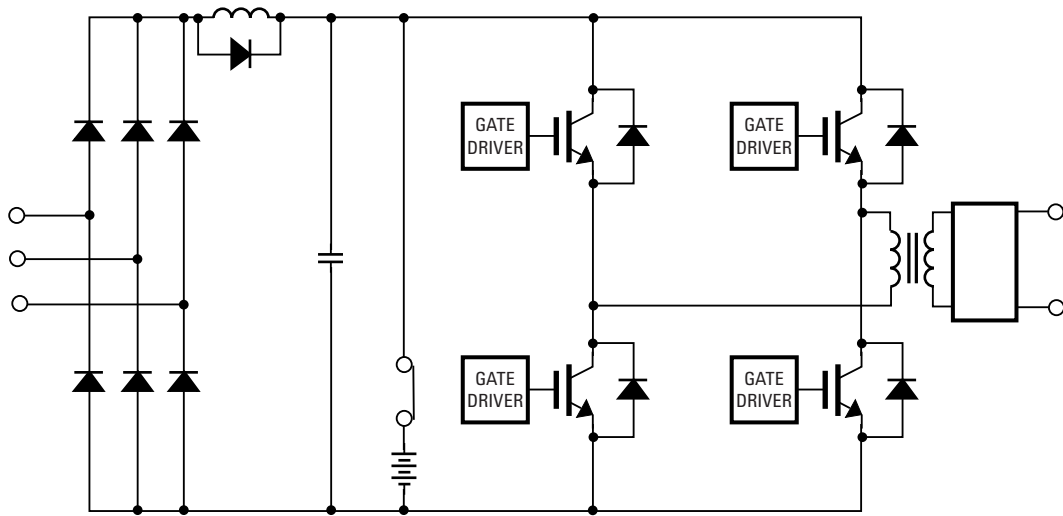


Figure 5. Low Power CVCF Inverter (UPS)

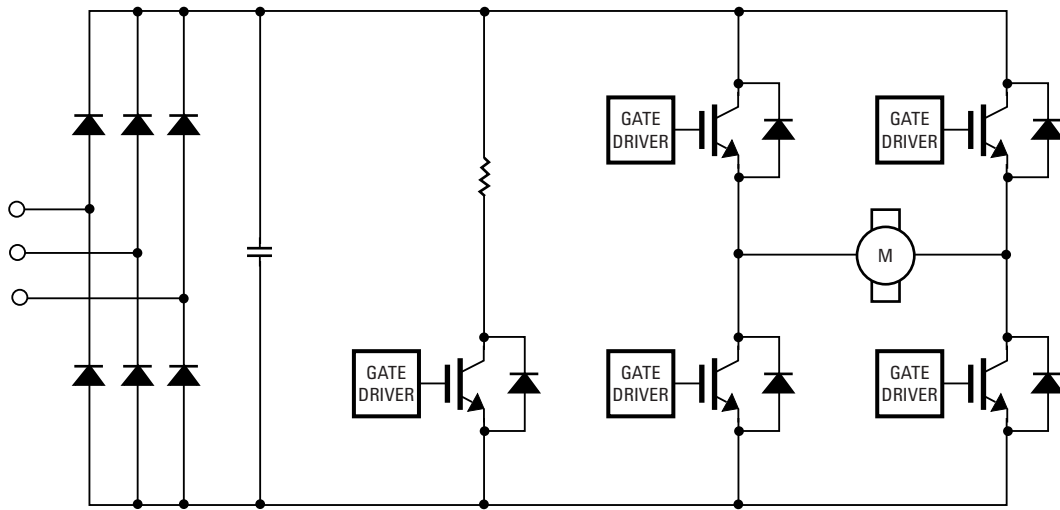


Figure 6. DC Servo

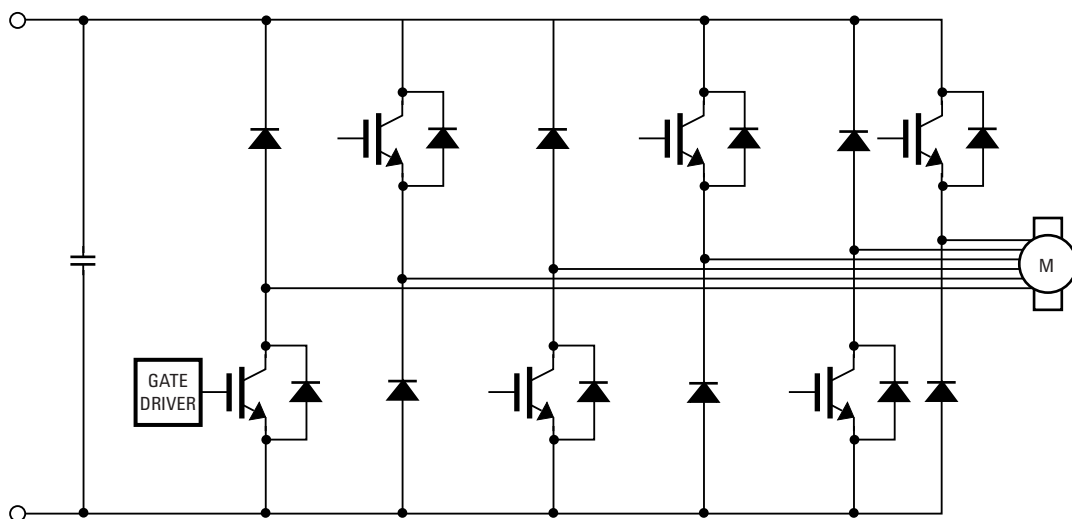


Figure 7. Switched Reluctance Drive

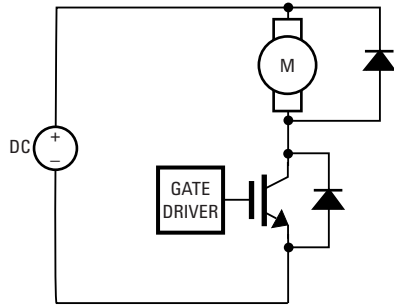


Figure 8. DC Chopper

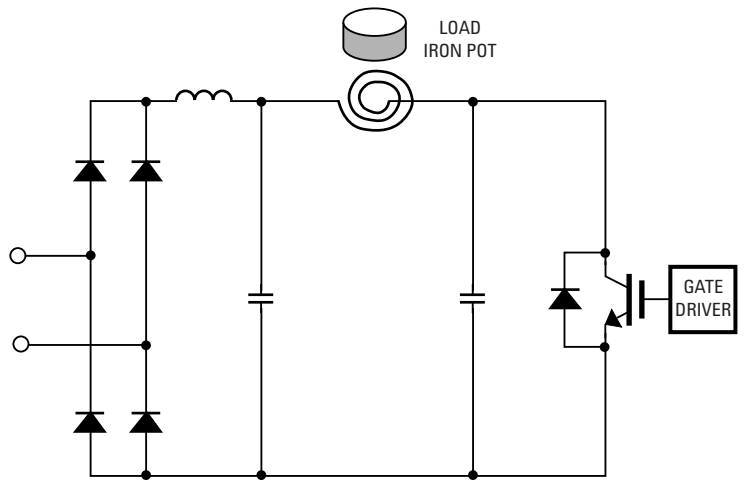


Figure 9. Induction Cooker

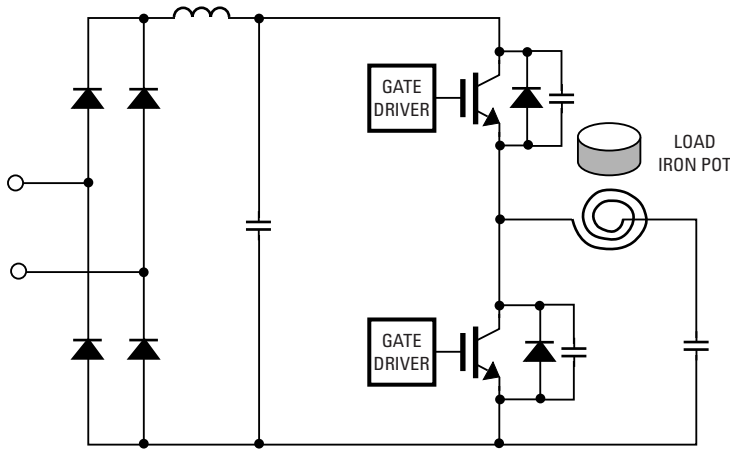


Figure 10. Series Resonant Induction Cooker

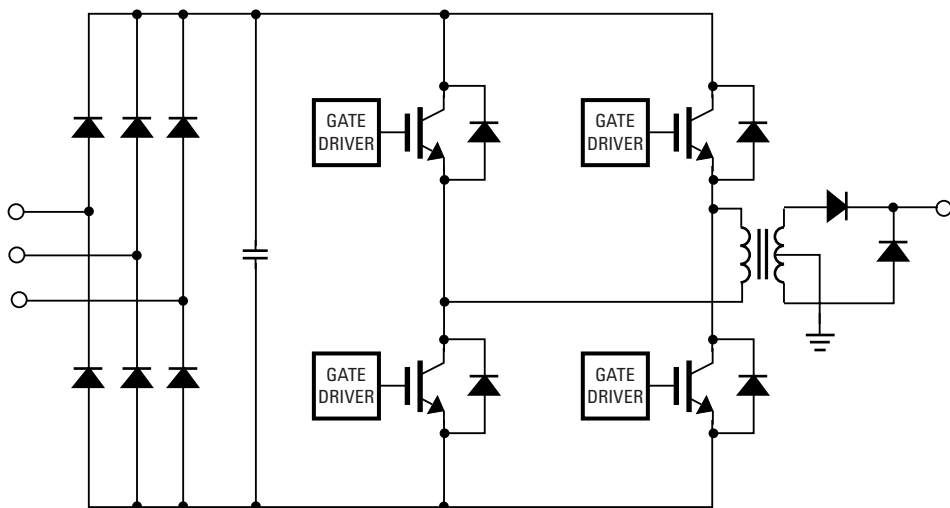


Figure 11. Welder

Calculation of Minimum Output Current (I_{OL}) to Drive IGBT / MOSFET

The key requirement for any IGBT/MOSFET gate drive optocoupler is for it to supply the Minimum Output Current (I_{OL}) needed to switch the IGBT/MOSFET to the low-impedance state. A common misunderstanding in selecting a gate drive optocoupler is looking at the Maximum Peak Output Currents [$I_{OH(PEAK)} / I_{OL(PEAK)}$] in the Absolute Maximum Rating Section of the data sheet. Though Maximum Peak Output Currents are no less important, they are meant to define the maximum permissible operational condition that could result in the destruction of the device if exceeded.

To determine the suitability of a gate drive optocoupler, it is necessary to look at the Minimum Output Currents (I_{OH} / I_{OL}) of the gate drive optocoupler in the Electrical Specifications Section of the data sheet. Particularly important, the I_{OL} needs to be specified at the condition when V_O is low, that is when the gate drive optocoupler is at the charging state. This is because under this condition the load draws the highest output current. Agilent specifies I_{OL} at $V_O = V_{CC} - 10$ V. Similarly for I_{OH} , it is important to specify at the condition when V_O is high, that is when the gate drive optocoupler is discharging. Agilent specifies I_{OH} at $V_O = V_{EE} + 10$ V.

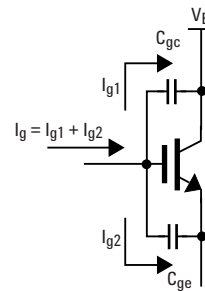
This Minimum Output Current (I_{OL}) required to switch IGBT / MOSFET to the low-impedance state could be easily calculated using the gate capacitance charging equations. Gate capacitance of IGBT / MOSFET can be obtained from the data sheet. After calculating the

Minimum Output Current required to drive the IGBT / MOSFET, the suitable gate drive optocouplers can be selected from Agilent Technologies' Gate Drive Optocoupler Selection Guide.

The gate capacitance of the IGBT / MOSFET determines how much current is required from the driver for basic switching:

$$V_{C(GE)} = \frac{1}{C_{ge}} \cdot \int_{\tau=0}^{\tau=t_{sw}} i_g(\tau) \cdot d\tau$$

$$V_{C(GE)} = \frac{1}{C_{ge}} \cdot I_g \cdot t_{sw}$$



$$I_{G1} = \frac{V_B \times C_{GC}}{t_{sw}}$$

$$I_{G2} = \frac{V_{C(GE)} \times C_{GE}}{t_{sw}}$$

where,

C_{gc} - gate-to-collector capacitor

C_{ge} - gate-to-emitter capacitor

$V_{C(GE)}$ - Voltage across gate-to-emitter capacitor

I_g - total gate current flows into gate

I_{g1} - gate current flows into C_{gc}

I_{g2} - gate current flows into C_{ge}

V_B - bus voltage

t_{sw} - switching time

Figure 11. IGBT / MOSFET Parasitic Capacitances (C_{ge} and C_{gc})

A gate resistor, R_g , must be selected such that the maximum peak output current rating, $I_{OL(PEAK)}$, is not exceeded.

$$R_g = \frac{V_{CC} - V_{EE} - V_{OL}}{I_{OLPEAK}}$$

where,

V_{CC} - Positive supply voltage of gate drive optocoupler

V_{EE} - Negative supply voltage of gate drive optocoupler

V_{OL} - Low level output voltage of gate drive optocoupler

$I_{OL(PEAK)}$ - Maximum peak output current of gate drive optocoupler

Other Key Parameters in Selecting a Gate Drive Optocoupler

Other key parameters in selecting a gate driver optocoupler are propagation delay and common mode rejection ratio. For typical motor control applications, high speed gate drive optocouplers with propagation delays, t_{PLH} , $t_{PHL} \leq 0.8 \mu s$ and common mode rejection ratio, $CMR \geq 10 \text{ kV} / \mu s$ @ $V_{CM} = 1000 \text{ V}$ are recommended, and Agilent's gate drive optocouplers meet all these basic requirements.

Selection Guideline for IGBT Class and AC Motor Rating

Different sizes of IGBT need different gate drive optocouplers with different output driving

currents. Tables 1 and 2 below list basic selection guides based on operating line voltage, IGBT ratings and AC motor power ratings and the appropriate gate drive optocouplers.

References

1. J. N., Khan, "Optocouplers for Variable Speed Motor Control Electronics in Consumer Home Appliances", Agilent Technologies Publication Number 5980-1297 (5/00)

Table 1. Gate Drive Optocouplers Selection Guide for 220 Vac Operating Motor

IGBT V_{CES} (V)	IGBT I_C (A)	AC Motor Rating		Recommended Gate Drive Optocouplers
		kW	HP	
600 V	15	0.4	0.5	HCPL-0314/ 3140/J314/314J, HCPL-3150/ 315J
	20	1.5	2	HCPL-0314/ 3140/J314/314J, HCPL-3150/ 315J
	30	2.2	3	HCPL-0314/ 3140/J314/314J, HCPL-3150/ 315J
	50	3.7	5	HCPL-0314/ 3140/J314/314J, HCPL-3150/ 315J
	75	7.5	10	HCPL-0314/ 3140 /J314/ 314J, HCPL-3150/ 315J
	100	11	15	HCPL-3120/J312, HCNW3120, HCPL-316J
	150	15	20	HCPL-3120/J312, HCNW3120, HCPL-316J
	200	22	30	HCPL-3120/J312, HCNW3120, HCPL-316J
	300	30	40	HCPL-3120/J312, HCNW3120, HCPL-316J
	400	45	60	Gate Drive Optocoupler + Buffer
600	55	75	Gate Drive Optocoupler + Buffer	

Note: The actual application depends on ventilation, power dissipation, heat sinking and other applications conditions.

V_{CES} - Collector-Emitter Breakdown Voltage
 I_C - Collector Current

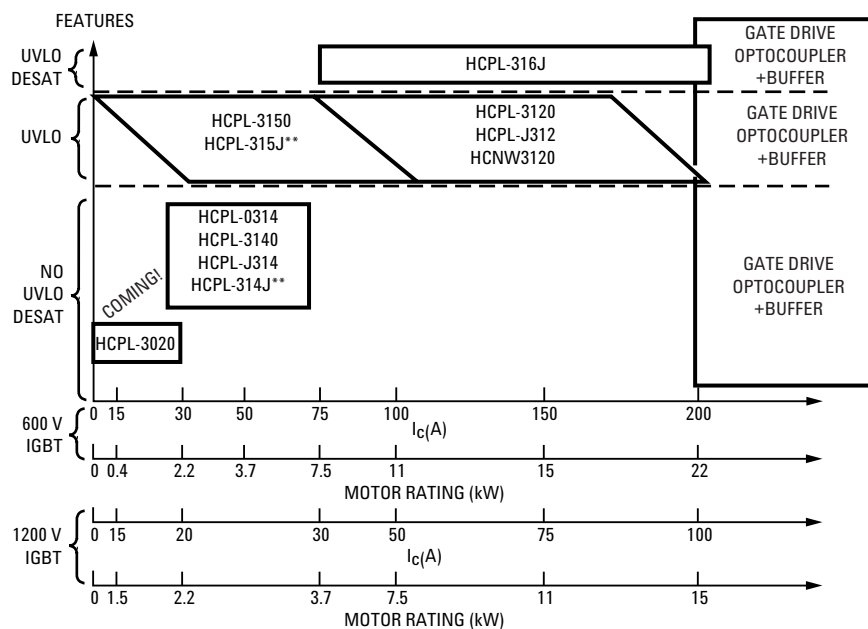
Table 2. Gate Drive Optocouplers Selection Guide for 440 Vac Operating Motor

IGBT V _{CES} (V)	IGBT I _C (A)	AC Motor Rating		Recommended Gate Drive Optocouplers
		kW	HP	
1200 V	15	1.5	2	HCPL-0314/ 3140/ J314/ 314J, HCPL-3150 /315J
	20	2.2	3	HCPL-0314/ 3140/ J314/ 314J, HCPL-3150 /315J
	30	3.7	5	HCPL-0314/ 3140/ J314/ 314J, HCPL-3150 /315J
	50	7.5	10	HCPL-3120/ J312, HCNW3120, HCPL-316J
	75	11	15	HCPL-3120/ J312, HCNW3120, HCPL-316J
	100	15	20	HCPL-3120/ J312, HCNW3120, HCPL-316J
	150	22	30	Gate Drive Optocoupler + Buffer
	200	37	50	Gate Drive Optocoupler + Buffer
	300	55	75	Gate Drive Optocoupler + Buffer
	400	75	100	Gate Drive Optocoupler + Buffer
	600	110	150	Gate Drive Optocoupler + Buffer

Note: The actual application depends on ventilation, power dissipation, heat sinking and other applications conditions.

V_{CES} - Collector-Emitter Breakdown Voltage

I_C - Collector Current



* ESTIMATION, ACTUAL APPLICATION DEPENDS ON VENTILATION, HEAT SINKING AND OTHER APPLICATION CONDITIONS.

** INDICATE DUAL CHANNEL DEVICE.

Figure 13. Driving Capability of Gate Drive Optocouplers

www.agilent.com/semiconductors

For product information and a complete list of distributors, please go to our web site.

For technical assistance call:

Americas/Canada: +1 (800) 235-0312 or (408) 654-8675

Europe: +49 (0) 6441 92460

China: 10800 650 0017

Hong Kong: (+65) 6271 2451

India, Australia, New Zealand: (+65) 6271 2394

Japan: (+81 3) 3335-8152(Domestic/International), or 0120-61-1280(Domestic Only)

Korea: (+65) 6271 2194

Malaysia, Singapore: (+65) 6271 2054

Taiwan: (+65) 6271 2654

Data subject to change.

Copyright © 2003 Agilent Technologies, Inc.

Obsoletes 5988-8560EN

March 4, 2003

5988-9009EN



Agilent Technologies

SUNSTAR 商斯达实业集团是集研发、生产、工程、销售、代理经销、技术咨询、信息服务等为一体的高科技企业，是专业高科技电子产品生产厂家，是具有 10 多年历史的专业电子元器件供应商，是中国最早和最大的仓储式连锁规模经营大型综合电子零部件代理分销商之一，是一家专业代理和分销世界各大品牌 IC 芯片和电子元器件的连锁经营综合性国际公司，专业经营进口、国产名厂名牌电子元件，型号、种类齐全。在香港、北京、深圳、上海、西安、成都等全国主要电子市场设有直属分公司和产品展示展销窗口门市部专卖店及代理分销商，已在全国范围内建成强大统一的供货和代理分销网络。我们专业代理经销、开发生产电子元器件、集成电路、传感器、微波光电元器件、工控机/DOC/DOM 电子盘、专用电路、单片机开发、MCU/DSP/ARM/FPGA 软件硬件、二极管、三极管、模块等，是您可靠的一站式现货配套供应商、方案提供商、部件功能模块开发配套商。商斯达实业公司拥有庞大的资料库，有数位毕业于著名高校——有中国电子工业摇篮之称的西安电子科技大学（西军电）并长期从事国防尖端科技研究的高级工程师为您精挑细选、量身订做各种高科技电子元器件，并解决各种技术问题。

微波光电部专业代理经销高频、微波、光纤、光电元器件、组件、部件、模块、整机；电磁兼容元器件、材料、设备；微波 CAD、EDA 软件、开发测试仿真工具；微波、光纤仪器仪表。欢迎国外高科技微波、光纤厂商将优秀产品介绍到中国、共同开拓市场。长期大量现货专业批发高频、微波、卫星、光纤、电视、CATV 器件：晶振、VCO、连接器、PIN 开关、变容二极管、开关二极管、低噪晶体管、功率电阻及电容、放大器、功率管、MMIC、混频器、耦合器、功分器、振荡器、合成器、衰减器、滤波器、隔离器、环行器、移相器、调制解调器；光电子器件和组件：红外发射管、红外接收管、光电开关、光敏管、发光二极管和发光二极管组件、半导体激光二极管和激光器组件、光电探测器和光接收组件、光发射接收模块、光纤激光器和光放大器、光调制器、光开关、DWDM 用光发射和接收器件、用户接入系统光收发器件与模块、光纤连接器、光纤跳线/尾纤、光衰减器、光纤适配器、光隔离器、光耦合器、光环行器、光复用器/转换器；无线收发芯片和模组、蓝牙芯片和模组。

更多产品请看本公司产品专用销售网站：

商斯达微波光电产品网：[HTTP://www.rfoe.net/](http://www.rfoe.net/)

商斯达中国传感器科技信息网：<http://www.sensor-ic.com/>

商斯达工控安防网：<http://www.pc-ps.net/>

商斯达电子元器件网：<http://www.sunstare.com/>

商斯达消费电子产品网：<http://www.icasic.com/>

商斯达实业科技产品网：<http://www.sunstars.cn/> 射频微波光电元器件销售热线：

地址：深圳市福田区福华路福庆街鸿图大厦 1602 室

电话：0755-83396822 83397033 83398585 82884100

传真：0755-83376182 (0) 13823648918 MSN: SUNS8888@hotmail.com

邮编：518033 E-mail:szss20@163.com QQ: 195847376

深圳赛格展销部：深圳华强北路赛格电子市场 2583 号 电话：0755-83665529 25059422

技术支持：0755-83394033 13501568376

欢迎索取免费详细资料、设计指南和光盘；产品凡多，未能尽录，欢迎来电查询。

北京分公司：北京海淀区知春路 132 号中发电子大厦 3097 号

TEL: 010-81159046 82615020 13501189838 FAX: 010-62543996

上海分公司：上海市北京东路 668 号上海赛格电子市场 D125 号

TEL: 021-28311762 56703037 13701955389 FAX: 021-56703037

西安分公司：西安高新开发区 20 所(中国电子科技集团导航技术研究所)

西安劳动南路 88 号电子商城二楼 D23 号

TEL: 029-81022619 13072977981 FAX:029-88789382