

# Design and Applications of HCPL-3020 and HCPL-0302 Gate Drive Optocouplers

## Application Note 5004

### Introduction

The HCPL-3020 (DIP-8) and HCPL-0302 (SO-8) consist of GaAsP LED optically coupled to an integrated circuit with a power output stage. The current rating, combined with the high common mode rejection (CMR), fast switching and latch-up performance uniquely qualify these optocouplers to be the ideal choices in low power inverter gate drive applications. The high operating voltage ranges of the HCPL-3020 and HCPL-0302 output stages provide the drive voltages required by MOS-gated devices like IGBTs or MOSFETs. The voltage and current provided by these optocouplers make it suitable for driving IGBTs with rating up to 1200V/20A.

The HCPL-3020 and HCPL-0302 represent one of the cheapest solutions to drive MOS-gated devices in safe, efficient, reliable and cost-effective manner. Besides its ease of implementation, the HCPL-3020 and HCPL-0302 also excel in power consumption. HCPL-3020 and HCPL-0302 will please all designers in the motor control or inverter arena as the following features demonstrate:

- External gate resistor connection: Designer can control the gate signal flow, and have an option to slow down the device commutation, therefore reducing the amount of Electro-Magnetic Interference (EMI) compared to intelligent power module (IPM) solution.
- Low level output voltage,  $V_{OL}$ : The  $V_{OL}$  of HCPL-3020 and HCPL-0302 is specified at 1.0V maximum. This low voltage possibly eliminates the need of negative gate drive for many applications.
- Low power consumption: Low supply current of 3mA, which allows powering HCPL-3020 and HCPL-0302 using bootstrap technique. This eliminates the need of an isolated power supply or dc-to-dc converter and a smaller  $V_{CC}$  capacitor can be used. This not only reduces the printed circuit board space but also total system cost.
- Low external part-count: by integrating the gate driver and isolation function in one package, the final HCPL-3020 and HCPL-0302 implementation reveals an obvious gain in component reduction compared to other competing technologies, such as transformer and high voltage integrated circuit.

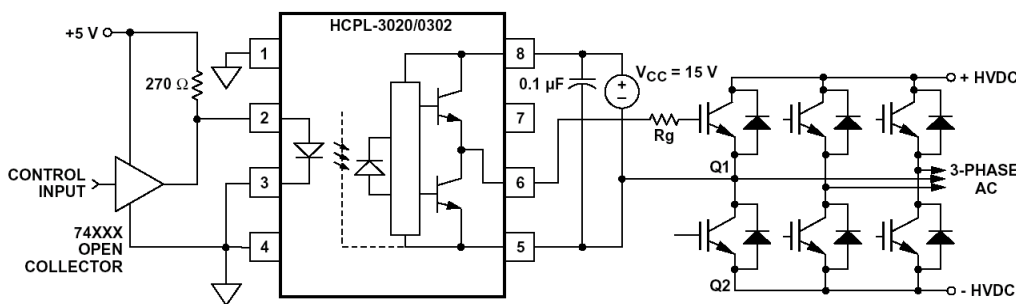


Figure 1. Recommended LED Drive and Application Circuit for HCPL-3020 and HCPL-0302.



Agilent Technologies

### Bootstrap Power Supply Circuit

Figure 2 shows a bootstrapped power supply circuit. This circuit includes a bootstrap circuit for providing output power to the HCPL-3020 or HCPL-0302 gate drive optocouplers, thereby eliminating the need for isolated power supplies or dc-to-dc converters. It can be modified to suit other Agilent Technologies' gate drive optocouplers and current/voltage sensing isolation amplifiers.

In this basic bootstrap topology, when the lower IGBT,  $Q_2$  in the bridge is turned on, the emitter of  $Q_1$  is pulled to -HV. Similarly, when the upper IGBT,  $Q_1$  is turned on, the collector of  $Q_2$  is pulled to +HV. This charges  $C_{BSH}$  and  $C_{BSL}$  up to the supply voltage  $V_{CC}$  minus the voltage drop across the diodes  $D_H$  and  $D_L$ . The energy stored in  $C_{BSH}$  and  $C_{BSL}$  can then be used to turn on  $Q_1$  and  $Q_2$ . 3 mA low supply current of HCPL-3020 and HCPL-0302 minimizes the value of  $C_{BSH}$  and  $C_{BSL}$ . The  $V_{CC}$  voltages are clamped by Zener Diodes,  $D_{ZH}$  and  $D_{ZL}$ .

### Influence of Gate Resistor

With external gate resistor connection, designers can control the IGBT gate signal flow, and have an option to slow down the device commutation; therefore reducing the amount of Electro-Magnetic Interference (EMI) compared to intelligent power module (IPM) solution.

Series gate resistor is typically used for both turn-on and turn-off of MOS-gated devices. It is commonly implemented using only a resistor. Advance gate control usually realized using different resistors for turn-on and turn-off.

A small gate resistor will help in avoiding cross conduction, limiting IGBT switching losses and improve di/dt. On the other hand, large gate resistor can help to avoid ringing, limiting the free wheeling diode losses and reverse recovery voltage. Designers need to balance the trade-off in selecting an optimize gate resistor.

Calculation selection of gate resistor, based on limiting the gate current and power dissipation can be found in application section of HCPL-3020 and HCPL-0302 data sheet.

### Speed Improvement Circuit

Designers typically focus more on turn-off process of MOS-gated devices. This is because the turn-on speed is generally satisfactory to drive the MOS-gated devices.

The circumstance is very much different during turn-off. Theoretically, the turn-off speed of MOS-gated device depends only on the gate drive circuit. A high current turn-off circuit can discharge the input capacitors more rapidly, providing shorter switching times and as a result lower switching losses. Higher discharge current can be accomplished by using a low output impedance gate driver and/or a negative turn-off voltage.

Low switching losses can be achieved by having faster switching, but it comes with a trade-off of increase ringing in the waveforms due to the higher turn-off di/dt and dv/dt. This must be taken into consideration in view of EMI concern.

### A. Anti-Parallel Diode Turn-Off Speed Improvement Circuit

One of the simplest turn-off speed improvement techniques is the anti-parallel diode, as shown in Figure 3. This simple circuit allows tuning of the IGBT turn-on speed by varying  $R_{GATE}$ . During turn-off, the anti-parallel diode,  $D_{OFF}$  shunts out the resistor,  $R_{GATE}$ .  $D_{OFF}$  will be forward biased and starts to conduct only when the voltage drops across the gate resistor, is higher than forward voltage of  $D_{OFF}$ :

$$I_G \times R_{GATE} > V_{FDOFF}$$

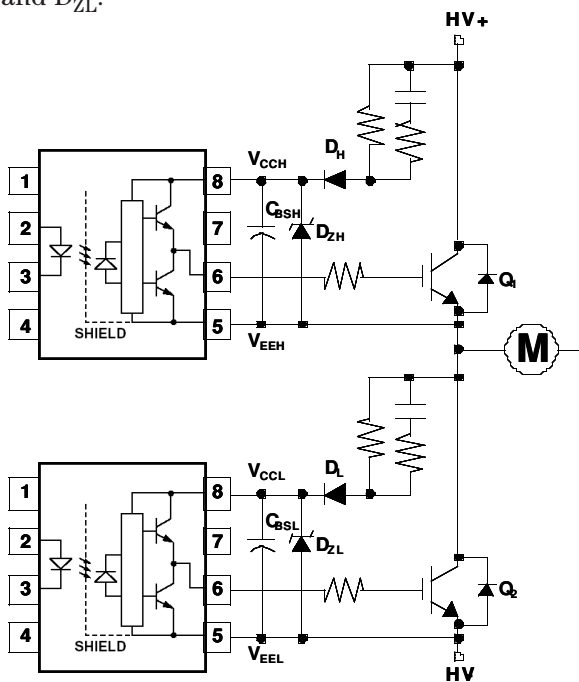


Figure 2. Bootstrap Circuit for Power Control System.

Therefore, as the gate-to-emitter voltage approaching zero, the effect of anti-parallel diode becomes less significant. Consequently, turn-off delay time is reduced, but improvement switching times and  $dv/dt$  immunity is only incremental.

### B. PNP Turn-Off Speed Improvement Circuit

One of the most popular arrangements to improve turn-off speed is the pnp turn-off speed improvement circuit illustrated in Figure 4.

In this simple circuit, during the turn-on, the input capacitor of IGBT is being charged through gate resistor,  $R_{GATE}$  and turn-on diode,  $D_{ON}$ .  $D_{ON}$  also prevent

reverse breakdown of the base-emitter junction of  $Q_{OFF}$  during the initial stage of the turn-on process.

During turn-off, the pnp transistor,  $Q_{OFF}$ , is being turned-on, and gate turn-off current is being discharged through  $Q_{OFF}$  to emitter of IGBT. With this simple circuit configuration, the area enclosed by high turn-off discharge current loop is being minimized.

The speed improvement circuit minimizes ground-bouncing problem by not discharging the turn-off current through the gate driver. Simultaneously, the power dissipation of the gate driver is cut to half.

### C. Negative Gate Drive Turn-off Speed Improvement Circuit

Low level output voltage,  $V_{OL}$  of HCPL-3020 and HCPL-0302 of 1.0V maximum possibly eliminates the need to negative gate drive for many applications. Under certain circumstances, a negative gate voltage as shown in Figure 5 can be applied to reduce the switching losses during turn-off.

Negative gate drive also help to ensure IGBTs in off state during turn-off process even with the present of high  $dv/dt$  noise in collector-emitter voltage.

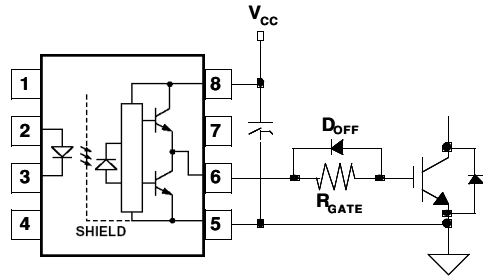


Figure 3. Anti-Parallel Diode Turn-Off Speed Improvement Circuit.

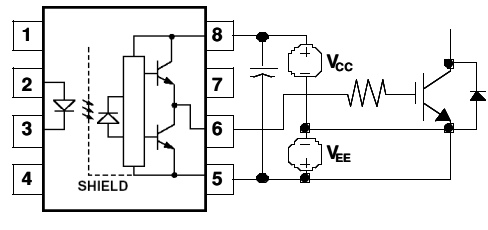


Figure 5. Negative Gate Drive ( $V_{EE}$ ) for Fast Turn-off.

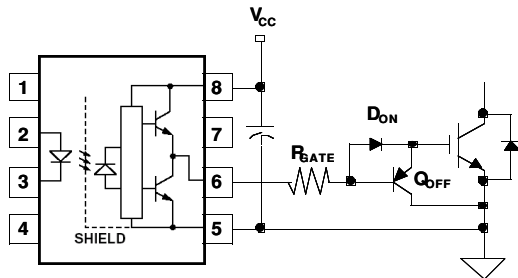


Figure 4. PNP Turn-Off Speed Improvement Circuit.

### Common Mode Transient Immunity

In motor drives and inverters, there are large voltage transient generated by switching of the transistors. Common Mode Transient Immunity of gate drive optocouplers is the key attribute that allow the transmit of accurate information across the isolation barrier. All Agilent Technologies' gate drive optocouplers rely on two key technical strengths to achieve high Common Mode Transient Immunity. The first is use of a proprietary, low-cost Faraday shield, which decouples the optocoupler input side from the output side. The second method is by unique package design, which minimizes input-to-output capacitance. For proper LED circuit consideration for ultra high Common Mode Transient Immu-

nity performance, please refer to application section of HCPL-3020 and HCPL-0302 data sheet.

### Driving Higher Power IGBT

A non-inverting current buffer, as illustrated in Figure 6 can be used to boost the IGBT gate drive current of HCPL-3020 or HCPL-0302. Even though the driver is built from discrete components, it is necessary to have its own bypass capacitor placed across the collectors  $Q_1$  and  $Q_2$ . Preferably, a smoothing resistor, R is inserted between the bypass capacitor of HCPL-3020 or HCPL-0302 and the bypass capacitor of the current buffer can improve noise immunity. The  $R_{BIAS}$  can be selected to provide the required gate impedance based on the large signal beta of the driver transistors,  $Q_1$  and  $Q_2$ .

This current buffer should be placed as close as possible to IGBT to minimize the parasitic inductance of the gate charging and discharging current loop.

If need of higher current arise, as a leading supplier of gate drive optocouplers, Agilent Technologies offers gate drive optocouplers with output current as high as 2.A offer in various packages to meet the requirements. These higher output current gate drive optocouplers help to:

- reduce external components needed for current buffer
- reduce printed circuit board space for discrete components
- reduce system cost

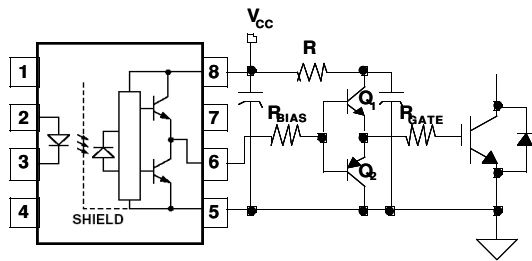


Figure 6. Current Buffer for Increased Drive Current.

Table 1. Agilent Technologies Gate Drive Optocouplers Portfolio.

Part Number	Description	Package
HCPL-316J	Highly Integrated Single Channel 2.0A Gate Drive Optocoupler	SO-16
HCPL-3120	2.0A IGBT Gate Drive Optocoupler	DIP-8
HCPL-J312	2.0A IGBT Gate Drive Optocoupler	DIP-8
HCNW-3120	2.0A IGBT Gate Drive Optocoupler	8-pin Widebody
HCPL-3150	0.5A IGBT Gate Drive Optocoupler	DIP-8
HCPL-315J	0.5A IGBT Gate Drive Optocoupler, Dual Channel	SO-16
HCPL-0314	0.4A IGBT Gate Drive Optocoupler	SO-8
HCPL-3140	0.4A IGBT Gate Drive Optocoupler	DIP-8
HCPL-J314	0.4A IGBT Gate Drive Optocoupler	DIP-8
HCPL-314J	0.4A IGBT Gate Drive Optocoupler, Dual Channel	SO-16
HCPL-0302	0.2A IGBT Gate Drive Optocoupler	SO-8
HCPL-3020	0.2A IGBT Gate Drive Optocoupler	DIP-8

## Conclusion

Agilent Technologies' HCPL-3020 and HCPL-0302 enables designers to meet stringent requirements of high Common Mode Rejection (CMR), wide operating temperature range and fast switching in low power inverter gate drive applications, specially targeting at low power industrial inverters and inverter controlled consumer appliances. Low  $I_{CC}$  supply current also allows the use of smaller  $V_{CC}$  capacitor, and use bootstrap technique eliminating costly isolated power supply. A few speed improvement circuits for HCPL-3020 and HCPL-0302 are recommended. Though current buffer can be used to increase driving current, Agilent Technologies does offer higher output current gate drive optocouplers up to 2.0A, which help to reduce external components, PCB space and system cost.

## References

1. "Agilent HCPL-3020/HCPL-0302 0.2 Amp Output Current IGBT Gate Drive Optocoupler Data Sheet", Agilent Technologies Publication Number 5988-9290EN (4/03)
2. J. N., Khan, "Optocouplers for Variable Speed Motor Control Electronics in Consumer Home Appliances", Agilent Technologies Publication Number 5980-1297 (5/00)
3. "Optocoupler Designer's Guide", Agilent Technologies Publication Number 5988-4082EN (6/02)

## [www.agilent.com/semiconductors](http://www.agilent.com/semiconductors)

For product information and a complete list of distributors, please go to our web site.

For technical assistance call:

Americas/Canada: +1 (800) 235-0312 or (916) 788-6763

Europe: +49 (0) 6441 92460

China: 10800 650 0017

Hong Kong: (65) 6756 2394

India, Australia, New Zealand: (65) 6755 1939

Japan: (+81 3) 3335-8152(Domestic/International), or 0120-61-1280(Domestic Only)

Korea: (65) 6755 1989

Singapore, Malaysia, Vietnam, Thailand, Philippines, Indonesia: (65) 6755 2044

Taiwan: (65) 6755 1843

Data subject to change.

Copyright © 2003 Agilent Technologies, Inc.

June 25, 2003

5988-9769EN



**Agilent Technologies**

SUNSTAR 商斯达实业集团是集研发、生产、工程、销售、代理经销、技术咨询、信息服务等为一体的高科技企业，是专业高科技电子产品生产厂家，是具有 10 多年历史的专业电子元器件供应商，是中国最早和最大的仓储式连锁规模经营大型综合电子零部件代理分销商之一，是一家专业代理和分销世界各大品牌 IC 芯片和电子元器件的连锁经营综合性国际公司，专业经营进口、国产名厂名牌电子元件，型号、种类齐全。在香港、北京、深圳、上海、西安、成都等全国主要电子市场设有直属分公司和产品展示展销窗口门市部专卖店及代理分销商，已在全国范围内建成强大统一的供货和代理分销网络。我们专业代理经销、开发生产电子元器件、集成电路、传感器、微波光电元器件、工控机/DOC/DOM 电子盘、专用电路、单片机开发、MCU/DSP/ARM/FPGA 软件硬件、二极管、三极管、模块等，是您可靠的一站式现货配套供应商、方案提供商、部件功能模块开发配套商。商斯达实业公司拥有庞大的资料库，有数位毕业于著名高校——有中国电子工业摇篮之称的西安电子科技大学（西军电）并长期从事国防尖端科技研究的高级工程师为您精挑细选、量身订做各种高科技电子元器件，并解决各种技术问题。

微波光电部专业代理经销高频、微波、光纤、光电元器件、组件、部件、模块、整机；电磁兼容元器件、材料、设备；微波 CAD、EDA 软件、开发测试仿真工具；微波、光纤仪器仪表。欢迎国外高科技微波、光纤厂商将优秀产品介绍到中国、共同开拓市场。长期大量现货专业批发高频、微波、卫星、光纤、电视、CATV 器件：晶振、VCO、连接器、PIN 开关、变容二极管、开关二极管、低噪晶体管、功率电阻及电容、放大器、功率管、MMIC、混频器、耦合器、功分器、振荡器、合成器、衰减器、滤波器、隔离器、环行器、移相器、调制解调器；光电子器件和组件：红外发射管、红外接收管、光电开关、光敏管、发光二极管和发光二极管组件、半导体激光二极管和激光器组件、光电探测器和光接收组件、光发射接收模块、光纤激光器和光放大器、光调制器、光开关、DWDM 用光发射和接收器件、用户接入系统光收发器件与模块、光纤连接器、光纤跳线/尾纤、光衰减器、光纤适配器、光隔离器、光耦合器、光环行器、光复用器/转换器；无线收发芯片和模组、蓝牙芯片和模组。

更多产品请看本公司产品专用销售网站：

商斯达微波光电产品网：[HTTP://www.rfoe.net/](http://www.rfoe.net/)

商斯达中国传感器科技信息网：<http://www.sensor-ic.com/>

商斯达工控安防网：<http://www.pc-ps.net/>

商斯达电子元器件网：<http://www.sunstare.com/>

商斯达消费电子产品网：<http://www.icasic.com/>

商斯达实业科技产品网：<http://www.sunstars.cn/> 射频微波光电元器件销售热线：

地址：深圳市福田区福华路福庆街鸿图大厦 1602 室

电话：0755-83396822 83397033 83398585 82884100

传真：0755-83376182 (0) 13823648918 MSN: SUNS8888@hotmail.com

邮编：518033 E-mail:szss20@163.com QQ: 195847376

深圳赛格展销部：深圳华强北路赛格电子市场 2583 号 电话：0755-83665529 25059422

技术支持：0755-83394033 13501568376

欢迎索取免费详细资料、设计指南和光盘；产品凡多，未能尽录，欢迎来电查询。

北京分公司：北京海淀区知春路 132 号中发电子大厦 3097 号

TEL: 010-81159046 82615020 13501189838 FAX: 010-62543996

上海分公司：上海市北京东路 668 号上海赛格电子市场 D125 号

TEL: 021-28311762 56703037 13701955389 FAX: 021-56703037

西安分公司：西安高新开发区 20 所(中国电子科技集团导航技术研究所)

西安劳动南路 88 号电子商城二楼 D23 号

TEL: 029-81022619 13072977981 FAX:029-88789382