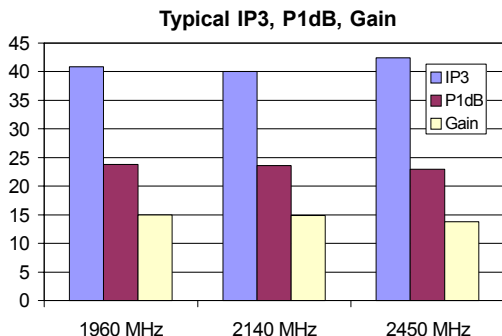


## Product Description

Sirenza Microdevices' SXT-289 amplifier is a high efficiency GaAs Heterojunction Bipolar Transistor (HBT) MMIC housed in low-cost surface-mountable plastic package. These HBT MMICs are fabricated using molecular beam epitaxial growth technology which produces reliable and consistent performance from wafer to wafer and lot to lot.

These amplifiers are specially designed for use as driver devices for infrastructure equipment in the 1800-2500 MHz cellular, ISM, WLL and Wideband CDMA applications.

Its high linearity makes it an ideal choice for multi-carrier as well as digital applications.



## SXT-289

### 1800-2500 MHz Medium Power GaAs HBT Amplifier



### Product Features

- Patented High Reliability GaAs HBT Technology
- High Output 3rd Order Intercept : +42 dBm typ. at 2450 MHz
- Surface-Mountable Power Plastic Package

### Applications

- Balanced Amplifier Configuration App. Note (AN-011)
- PCS Systems
- WLL, Wideband CDMA Systems
- ISM Systems

Symbol	Parameters: Test Conditions: $Z_0 = 50 \text{ Ohms}$ , $T_a = 25^\circ\text{C}$		Units	Min.	Typ.	Max.
$P_{1dB}$	Output Power at 1dB Compression	f = 1960 MHz f = 2140 MHz f = 2450 MHz	dBm dBm dBm	22.5	23.5 23.5 23.0	
$S_{21}$	Small signal gain	f = 1960 MHz f = 2140 MHz f = 2450 MHz	dB dB dB	13.5	15.0 15.0 13.8	16.6
$S_{11}$	Input VSWR	f = 1960 MHz f = 2140 MHz f = 2450 MHz	-		1.4:1 1.6:1 1.6:1	
$IP_3$	Output Third Order Intercept Point (P <sub>out</sub> /Tone = +11 dBm, Tone spacing = 1 MHz)	f = 1960 MHz f = 2140 MHz f = 2450 MHz	dBm dBm dBm	37.5	41.0 40.0 42.0	
NF	Noise Figure	f = 1960 MHz f = 2140 MHz f = 2450 MHz	dB dB dB		4.4 4.5 5.4	
$I_D$	Device Current	$V_S = 8V$ $R_{BIAS} = 27 \text{ Ohms}$ $V_D = 5 V \text{ typ.}$	mA	85	105	120
$R_{th(j-l)}$	Thermal Resistance (junction - lead)		$^\circ\text{C/W}$		108	

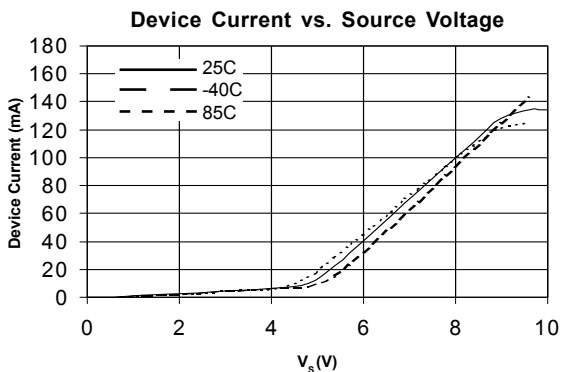
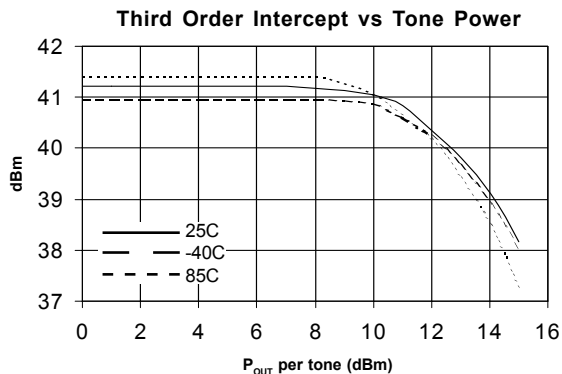
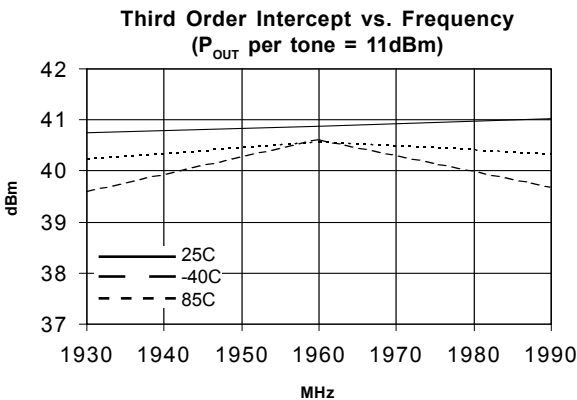
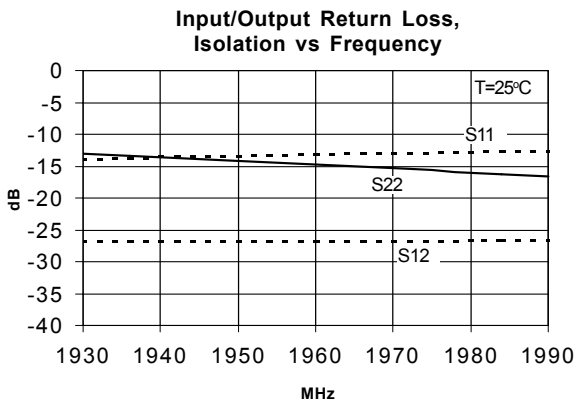
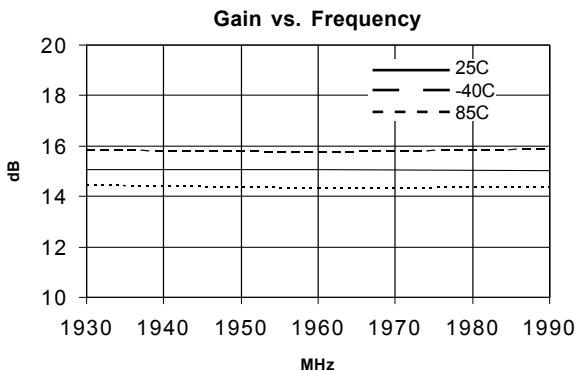
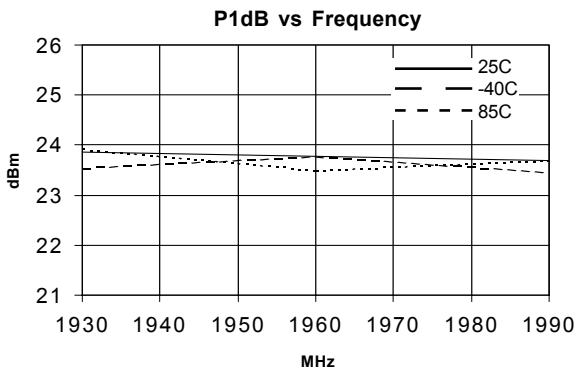
The information provided herein is believed to be reliable at press time. Sirenza Microdevices assumes no responsibility for inaccuracies or omissions. Sirenza Microdevices assumes no responsibility for the use of this information, and all such information shall be entirely at the user's own risk. Prices and specifications are subject to change without notice. No patent rights or licenses to any of the circuits described herein are implied or granted to any third party. Sirenza Microdevices does not authorize or warrant any Sirenza Microdevices product for use in life support devices and/or systems.

Copyright 2001 Sirenza Microdevices, Inc. All worldwide rights reserved. <http://www.rfoe.net/> TEL:0755-83397033 FAX:0755-83376182 E-MAIL:szss20@163.com

### SXT-289 1800-2500 MHz Power Amplifier

#### 1960 MHz Application Circuit Data, $V_s=8V$ , $I_D=105mA$ , $R_{BIAS}=27\ \Omega$

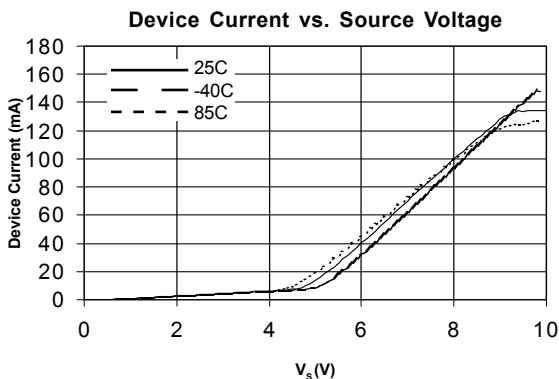
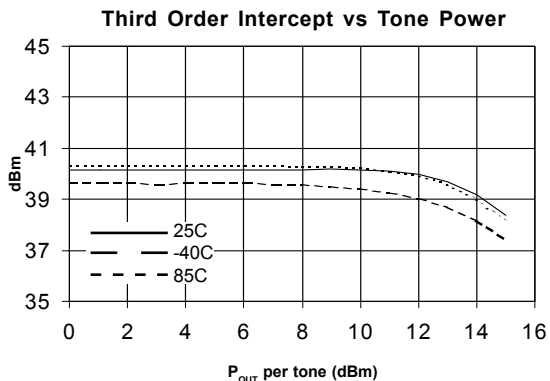
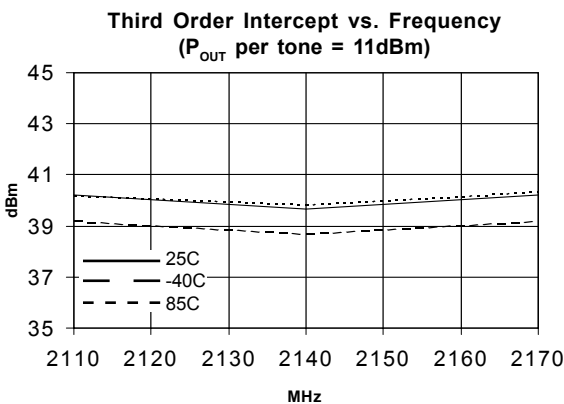
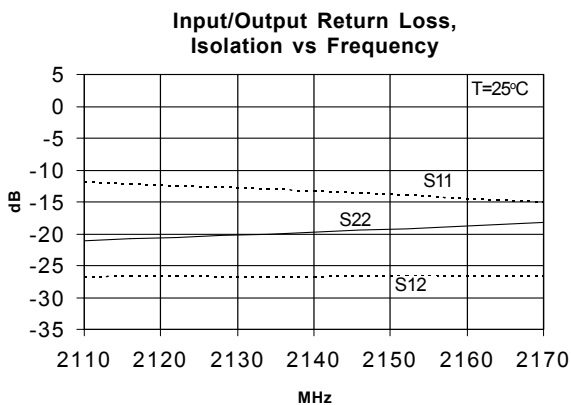
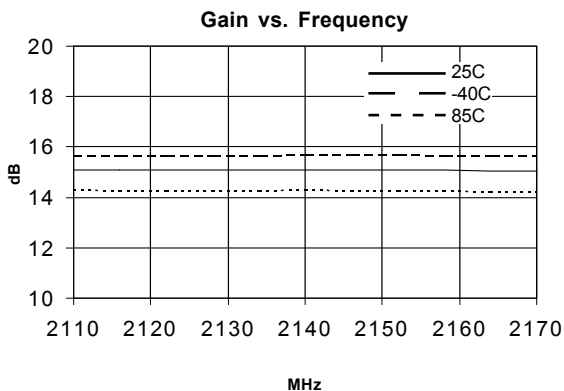
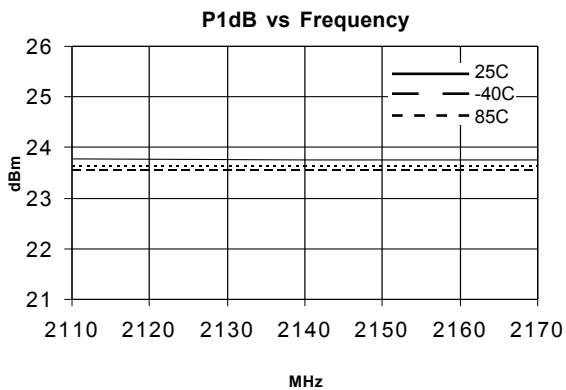
Note: Tuned for Output IP3



### SXT-289 1800-2500 MHz Power Amplifier

#### 2140 MHz Application Circuit Data, $V_s=8V$ , $I_D=105mA$ , $R_{BIAS}=27\ \Omega$

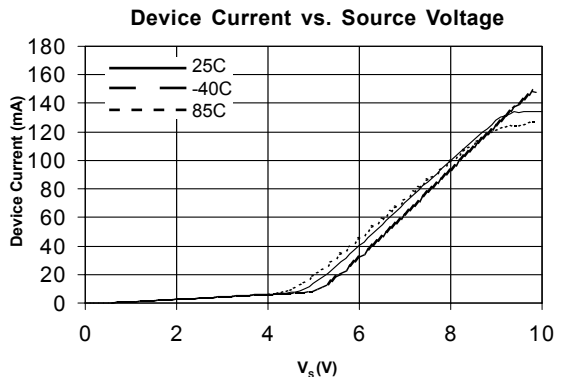
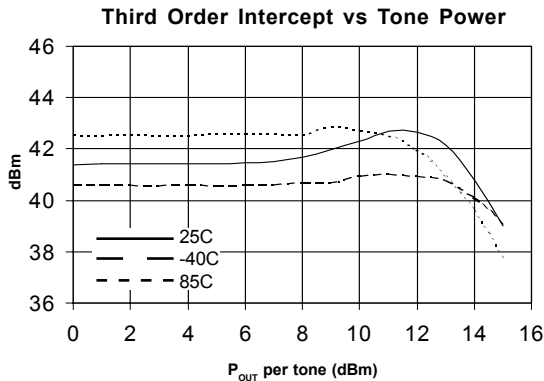
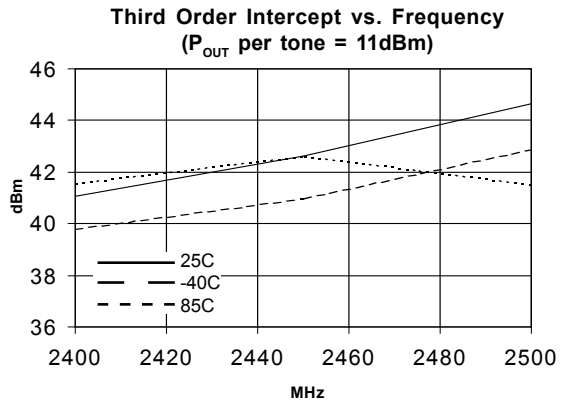
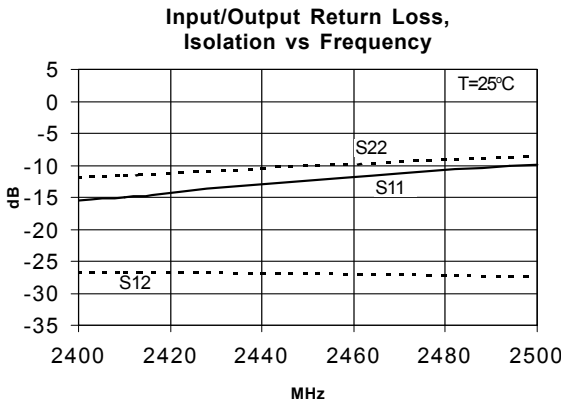
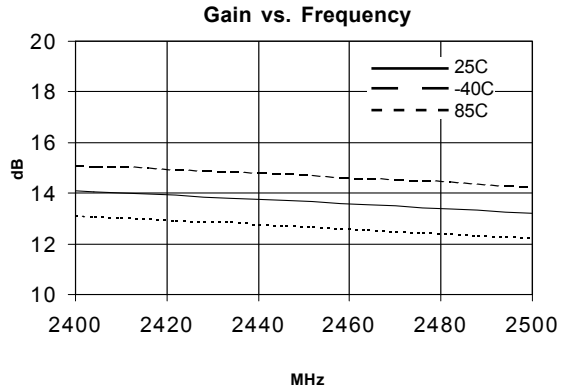
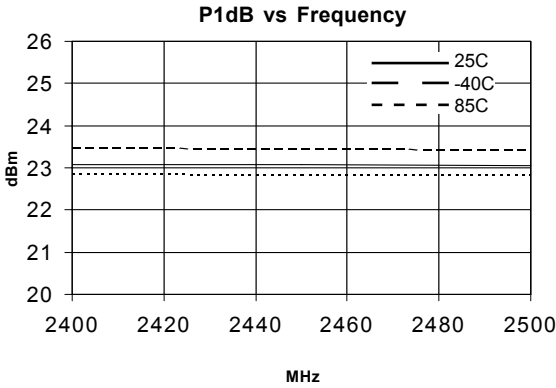
Note: Tuned for Output IP3



### SXT-289 1800-2500 MHz Power Amplifier

#### 2450 MHz Application Circuit Data, $V_s=8V$ , $I_D=105mA$ , $R_{BIAS}=27\ \Omega$

Note: Tuned for Output IP3

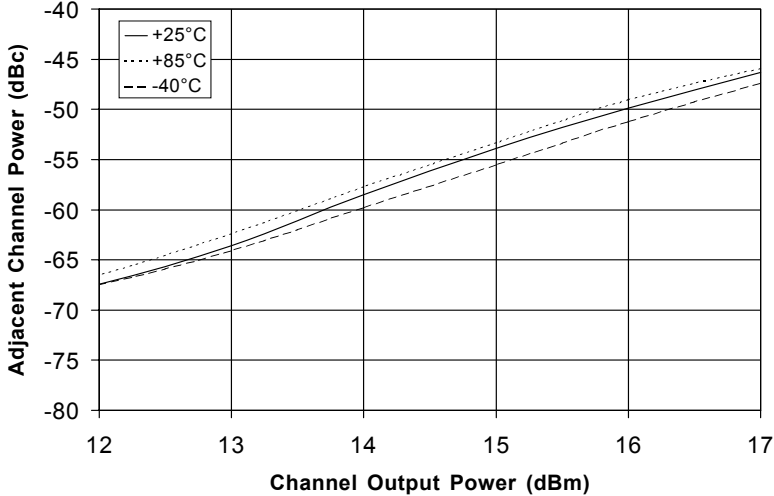


**SXT-289 1800-2500 MHz Power Amplifier**

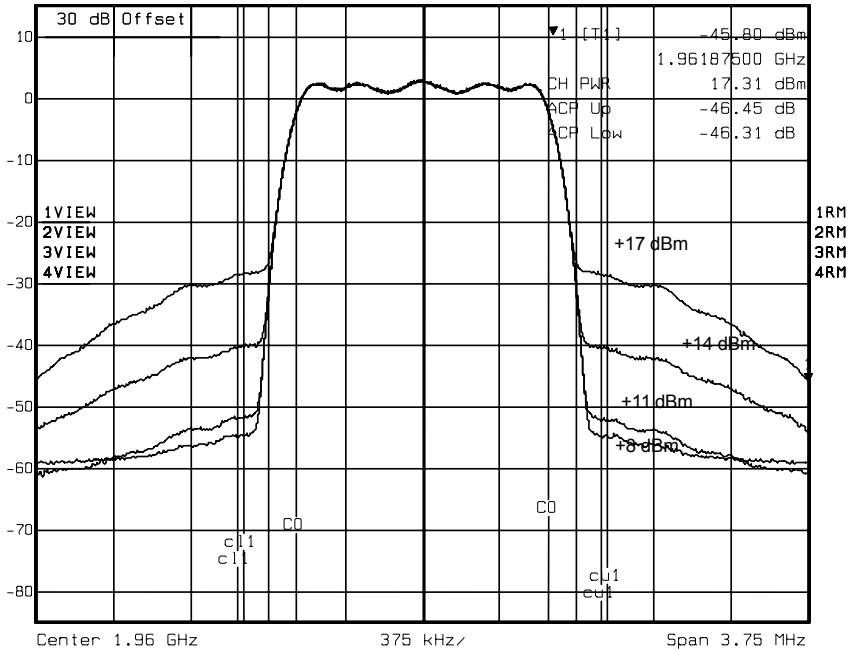
1960 MHz Application Circuit Data,  $V_s=8V$ ,  $I_D=105mA$ ,  $R_{BIAS}=27\ \Omega$

IS-95, 9 Channels Forward

**1960 MHz Adjacent Channel Power vs. Channel Output Power**



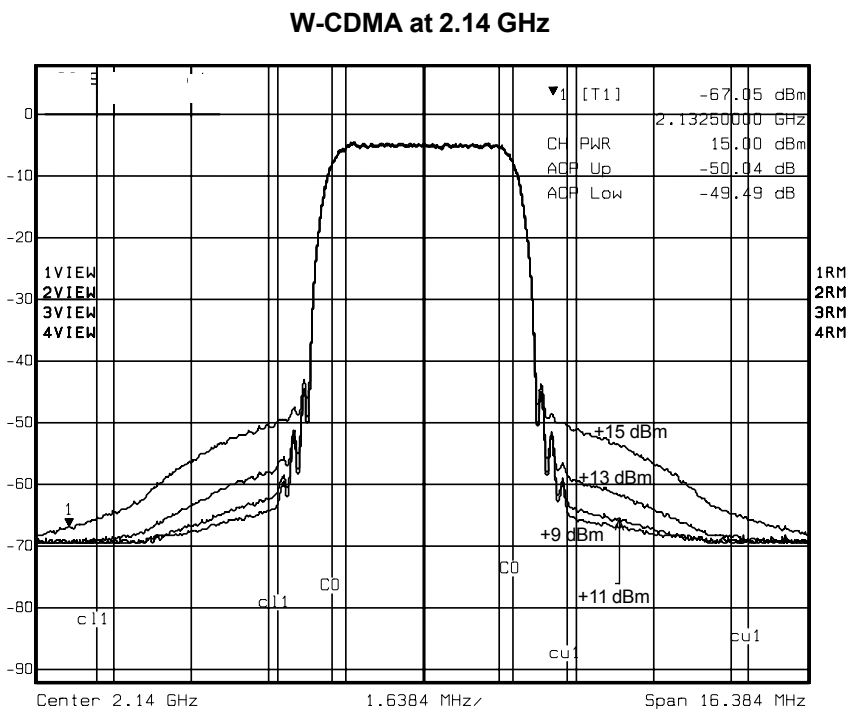
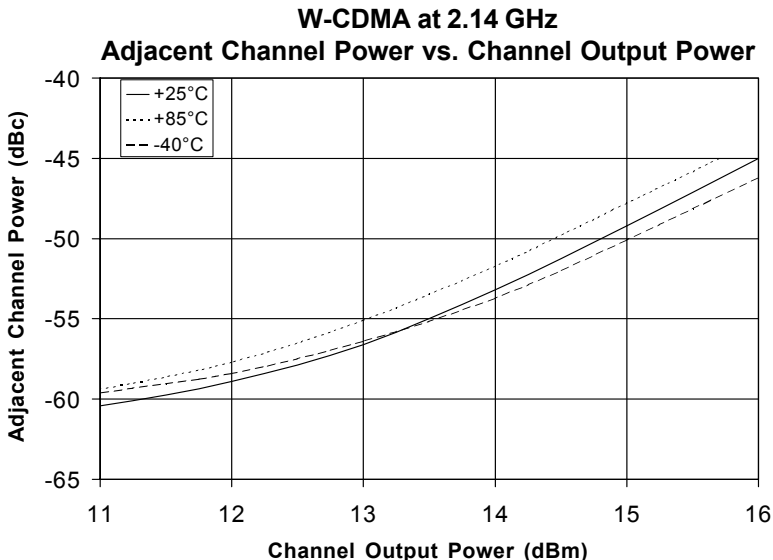
**IS-95 CDMA at 1960 MHz**



### SXT-289 1800-2500 MHz Power Amplifier

2140 MHz Application Circuit Data,  $V_S=8V$ ,  $I_D=105mA$ ,  $R_{BIAS}=27\ \Omega$

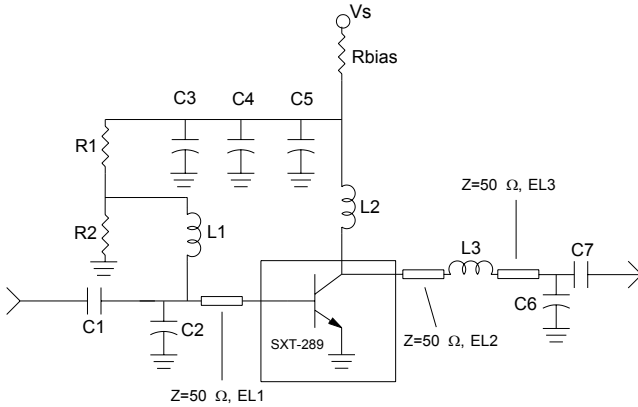
The W-CDMA setup is PCCPCH+PSCH+SSCH+CPICH+PICH+64 DPCH



## SXT-289 1800-2500 MHz Power Amplifier

### Voltage Feed Resistor Bias Circuit (for > 7V supply)

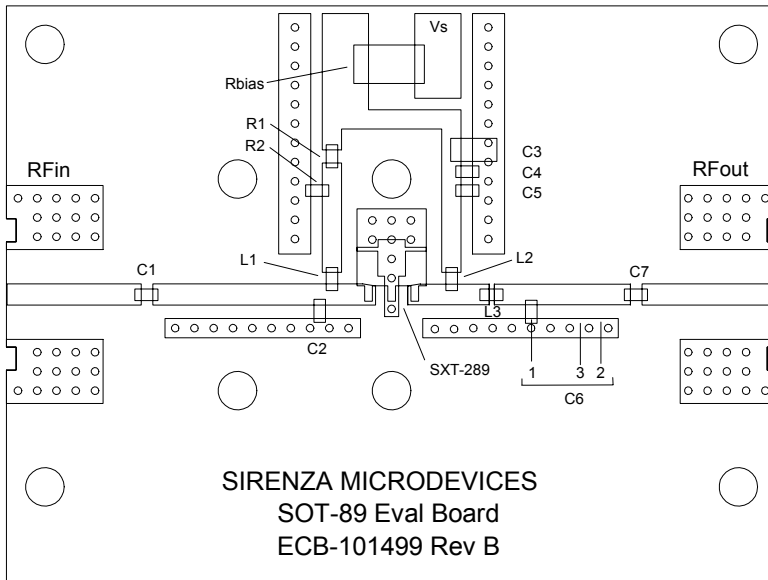
Note: Circuit Optimized for Output IP3



Schematic

Recommended Bias Resistor Values				
Supply Voltage(Vs)	7V	8V	10V	12V
Rbias (Ohms)	18	27	47	62
Power Rating	0.5W	1.0W	1.5W	2.0W

Ref. Des.	1960 MHz	2140 MHz	2450 MHz	Part Number
C1, C7	39pF	39pF	39pF	Rohm MCH18 series
C2	0.5pF	-	-	Rohm MCH18 series
C3	0.1uF	0.1uF	0.1uF	Matsuo 267M3502104K
C4	1000pF	1000pF	1000pF	Rohm MCH18 series
C5	18pF	18pF	18pF	Rohm MCH18 series
C6	1.0pF	1.0pF	1.0pF	Rohm MCH18 series
C6 Position	1	2	3	
L1, L2	15nH	15nH	15nH	Toko LL1608-FS series
L3	2.7nH	thru	thru	Toko LL1608-FS series
R1	390 Ohm	390 Ohm	390 Ohm	Rohm MCR03 series
R2	180 Ohm	180 Ohm	180 Ohm	Rohm MCR03 series
Rbias	see chart	see chart	see chart	
EL1	13.5°	-	-	
EL2	19°	-	-	
EL3	8.8°	* 56.7°	* 56°	* from output pin of SXT-289

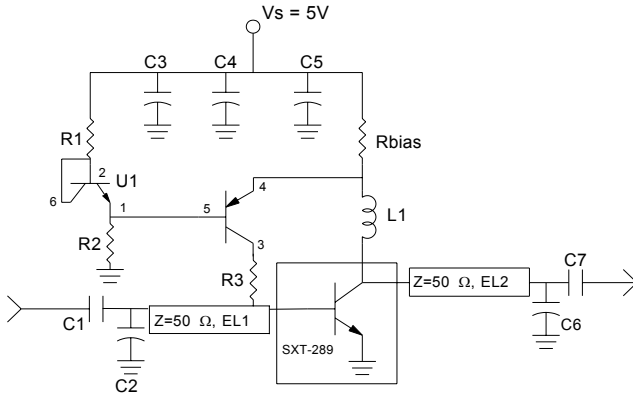


Evaluation Board Layout

## SXT-289 1800-2500 MHz Power Amplifier

### Active Current Feedback Bias Circuit (for 5V supply)

Note: Circuit Optimized for Output IP3

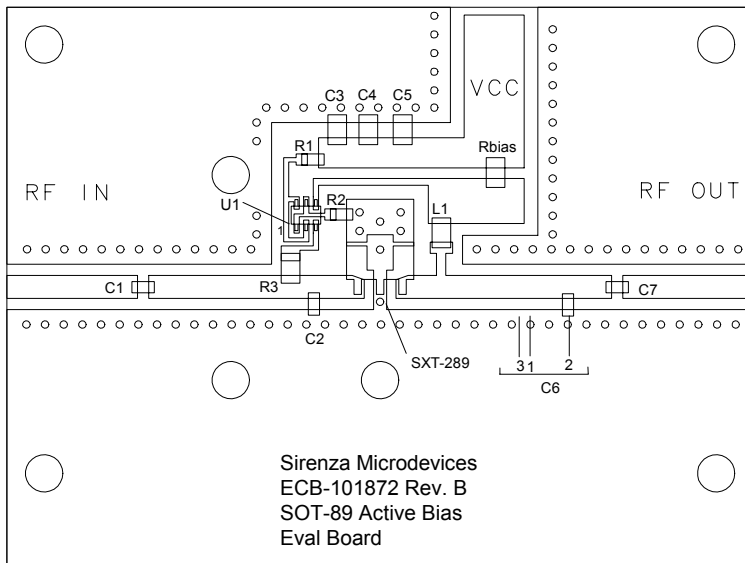


Schematic

Frequency	1960 MHz	2140 MHz	2450 MHz
Small Signal Gain (dB)	15.3	15.0	14.6
Output IP3 (dBm)	39.7*	39.2*	39.7*
P1dB (dBm)	23.8	23.0	23.7

\*Note: IP3 performance degraded due to lower (4.5V) device voltage.

Ref. Des.	1960 MHz	2140 MHz	2450 MHz	Part Number
C1, C7	39pF	39pF	39pF	Rohm MCH18 series
C2	0.5pF	-	-	Rohm MCH18 series
C3	0.1uF	0.1uF	0.1uF	Matsuo 267M3502104K
C4	1000pF	1000pF	1000pF	Rohm MCH18 series
C5	22pF	22pF	22pF	Rohm MCH18 series
C6	1.0pF	1.0pF	1.0pF	Rohm MCH18 series
C6 Position	1	2	3	
L1	15nH	15nH	15nH	Toko LL1608-FS series
R1	220 Ohm	220 Ohm	220 Ohm	Rohm MCR03 series
R2	1.8KOhm	1.8KOhm	1.8KOhm	Rohm MCR03 series
R3	750 Ohm	750 Ohm	750 Ohm	Rohm MCR03 series
Rbias	4.3 Ohm	4.3 Ohm	4.3 Ohm	Rohm MCR03 series
U1	UMZ1N	UMZ1N	UMZ1N	Rohm
EL1	13.5°	-	-	
EL2	35.5°	49.8°	40.9°	



Evaluation Board Layout

**NOTE: Reference Application Note AN-026 for more information on Active Current Bias Circuit.**



### Absolute Maximum Ratings

Parameter	Absolute Limit
Max. Supply Current ( $I_b$ )	200 mA
Max. Device Voltage ( $V_b$ )	6.0 V
Max. Power Dissipation	1500 mW
Max. RF Input Power	100 mW
Max. Junction Temp. ( $T_j$ )	+150 °C
Operating Lead Temp. ( $T_L$ )	-40 to +85 °C
Max. Storage Temp.	+150 °C

Operation of this device beyond any one of these limits may cause permanent damage. For reliable continuous operation, the device voltage and current must not exceed the maximum operating values specified in the table on page one.

Bias Conditions should also satisfy the following expression:  
 $I_b V_b (max) < (T_j - T_L) R_{\theta j-h}$



### Caution: ESD sensitive

Appropriate precautions in handling, packaging and testing devices must be observed.

## SXT-289 1800-2500 MHz Power Amplifier

### Part Number Ordering Information

Part Number	Devices Per Reel	Reel Size
SXT-289	1000	7"

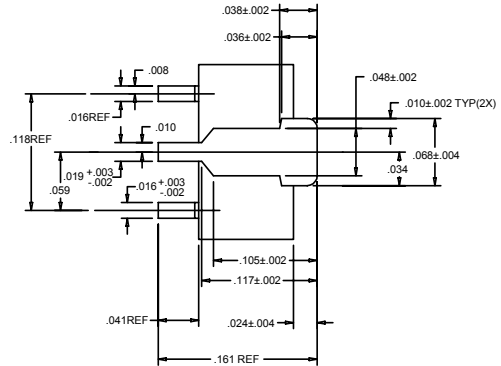
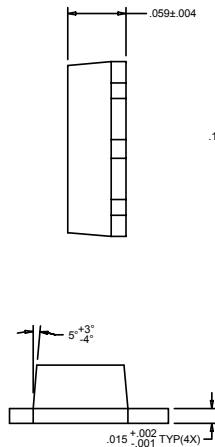
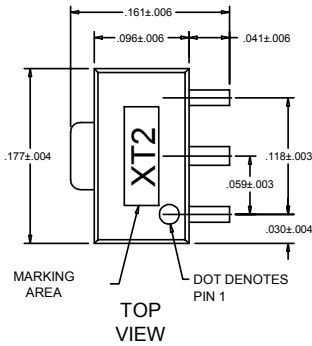
### Part Symbolization

The part will be symbolized with a "XT2" designator on the top surface of the package.

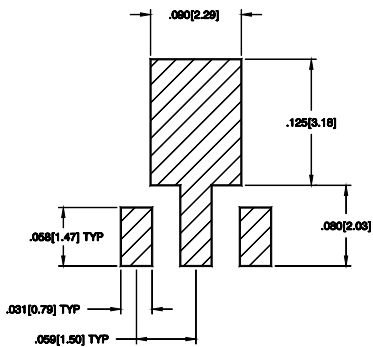
### Pin Description

Pin #	Function	Description
1	Base	Base Pin
2	GND & Emitter	Connection to ground. Use via holes to reduce lead inductance. Place vias as close to ground leads as possible.
3	Collector	Collector Pin
4	GND & Emitter	Same as Pin 2

### Package Dimensions

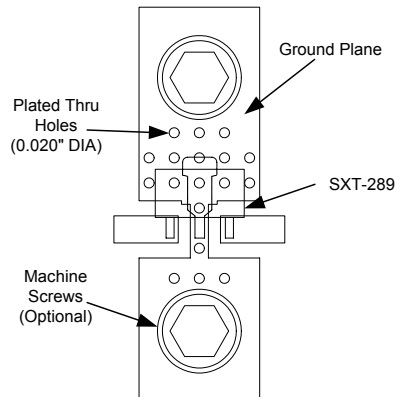


### PCB Pad Layout



DIMENSIONS ARE IN INCHES [MM]

### Recommended Mounting Configuration for Optimum RF and Thermal Performance



SUNSTAR 商斯达实业集团是集研发、生产、工程、销售、代理经销、技术咨询、信息服务等为一体的高科技企业，是专业高科技电子产品生产厂家，是具有 10 多年历史的专业电子元器件供应商，是中国最早和最大的仓储式连锁规模经营大型综合电子零部件代理分销商之一，是一家专业代理和分销世界各大品牌 IC 芯片和电子元器件的连锁经营综合性国际公司，专业经营进口、国产名厂名牌电子元件，型号、种类齐全。在香港、北京、深圳、上海、西安、成都等全国主要电子市场设有直属分公司和产品展示展销窗口门市部专卖店及代理分销商，已在全国范围内建成强大统一的供货和代理分销网络。我们专业代理经销、开发生产电子元器件、集成电路、传感器、微波光电元器件、工控机/DOC/DOM 电子盘、专用电路、单片机开发、MCU/DSP/ARM/FPGA 软件硬件、二极管、三极管、模块等，是您可靠的一站式现货配套供应商、方案提供商、部件功能模块开发配套商。商斯达实业公司拥有庞大的资料库，有数位毕业于著名高校——有中国电子工业摇篮之称的西安电子科技大学（西军电）并长期从事国防尖端科技研究的高级工程师为您精挑细选、量身订做各种高科技电子元器件，并解决各种技术问题。

微波光电部专业代理经销高频、微波、光纤、光电元器件、组件、部件、模块、整机；电磁兼容元器件、材料、设备；微波 CAD、EDA 软件、开发测试仿真工具；微波、光纤仪器仪表。欢迎国外高科技微波、光纤厂商将优秀产品介绍到中国、共同开拓市场。长期大量现货专业批发高频、微波、卫星、光纤、电视、CATV 器件：晶振、VCO、连接器、PIN 开关、变容二极管、开关二极管、低噪晶体管、功率电阻及电容、放大器、功率管、MMIC、混频器、耦合器、功分器、振荡器、合成器、衰减器、滤波器、隔离器、环行器、移相器、调制解调器；光电子器件和组件：红外发射管、红外接收管、光电开关、光敏管、发光二极管和发光二极管组件、半导体激光二极管和激光器组件、光电探测器和光接收组件、光发射接收模块、光纤激光器和光放大器、光调制器、光开关、DWDM 用光发射和接收器件、用户接入系统光收发器件与模块、光纤连接器、光纤跳线/尾纤、光衰减器、光纤适配器、光隔离器、光耦合器、光环行器、光复用器/转换器；无线收发芯片和模组、蓝牙芯片和模组。

更多产品请看本公司产品专用销售网站：

商斯达中国传感器科技信息网：<http://www.sensor-ic.com/>

商斯达工控安防网：<http://www.pc-ps.net/>

商斯达电子元器件网：<http://www.sunstare.com/>

商斯达微波光电产品网：[HTTP://www.rfoe.net/](http://www.rfoe.net/)

商斯达消费电子产品网：<http://www.icasic.com/>

商斯达实业科技产品网：<http://www.sunstars.cn/> 微波元器件销售热线：

地址：深圳市福田区福华路福庆街鸿图大厦 1602 室

电话：0755-82884100 83397033 83396822 83398585

传真：0755-83376182 (0) 13823648918 MSN: SUNS8888@hotmail.com

邮编：518033 E-mail:szss20@163.com QQ: 195847376

深圳赛格展销部：深圳华强北路赛格电子市场 2583 号 电话：0755-83665529 25059422

技术支持：0755-83394033 13501568376

欢迎索取免费详细资料、设计指南和光盘；产品凡多，未能尽录，欢迎来电查询。

北京分公司：北京海淀区知春路 132 号中发电子大厦 3097 号

TEL: 010-81159046 82615020 13501189838 FAX: 010-62543996

上海分公司：上海市北京东路 668 号上海赛格电子市场 D125 号

TEL: 021-28311762 56703037 13701955389 FAX: 021-56703037

西安分公司：西安高新开发区 20 所(中国电子科技集团导航技术研究所)

西安劳动南路 88 号电子商城二楼 D23 号

TEL: 029-81022619 13072977981 FAX:029-88789382