



**PE3341/2
EEPROM Programming
USER'S MANUAL**

6175 Nancy Ridge Drive, San Diego, CA 92121
(858) 455-0660, Fax (858) 455-0770
<http://www.peregrine-semi.com>

Table of Contents

- Introduction..... 4**
 - Introduction..... 5
 - Applications Support..... 5
 - FCC Labeling Requirement..... 5

- Hardware Section..... 6**
 - Programming Kit Contents & Requirements..... 7
 - 10-Wire Interface Cable Configuration..... 8
 - EE Programming Kit Setup..... 8

- Software Section..... 10**
 - Software Installation Instructions..... 11
 - Software Operation Instructions..... 11

© Copyright 2002 Peregrine Semiconductor Corp. All rights reserved. Printed in the United States of America. No part of this publication may be reproduced, photocopied, stored in a retrieval system, or transmitted by electronic, mechanical or any other means without prior written permission of Peregrine Semiconductor Corp.

Peregrine Semiconductor Corp., the Peregrine logotype, and UTSi are registered trademarks of Peregrine Semiconductor Corp. PE3341/42 is a trademark of Peregrine Semiconductor Corp.

Peregrine Semiconductor Corp. reserves the right to make improvements to the hardware, firmware or software described in this manual at any time and without notice. While the accompanying material has been carefully reviewed to insure the most accurate information possible, the data are not warranted for absolute accuracy or completeness and are subject to change without notification.

Peregrine Semiconductor Corp. Life Support Policy

Peregrine Semiconductor Corp. products are not intended for use in life-critical situations, or as critical components in life-support devices or systems.

Life-support devices or systems are defined as devices or systems that are intended for surgical implant into the body, or that support or sustain life, and whose failure to perform when used in accordance with the instructions provided by the manufacturer, might result in injury to the user.

FCC Compliance Statement

This device is intended for use only in a research and development environment. It has not been tested for compliance with FCC regulations regarding interference with radio frequency energy. It might cause harmful interference with radio communications. The user assumes responsibility for any interference caused by this device.



Introduction

Introduction

This EEPROM Programming board is specifically designed to program the EEPROM of 2.7 GHz Integer-N EEPROM PLLs PE3341/2. Using the hardware and software provided in the Programming Kit, EEPROM mode programming can be achieved.

Applications Support

If you have a problem with your Programming Kit, software, or if you have applications questions call **(858) 455-0660** and ask for applications support.

You may also contact us by fax or e-mail:

Fax: **(858) 455-0770**

E-Mail: **help@peregrine-semi.com**

FCC Labeling Requirement

This device complies with Part 15 of the FCC Rules. Operation is subject to the following two conditions: (1) this device may cause harmful interference, and (2) this device must accept any interference received including interference that may cause undesired operation.



Hardware Section

Programming Kit Contents & Requirements

The Programming Kit includes all of the specific software and hardware required to program the EEPROM of the PE3341/2. Included in the Programming Kit are:

- 1 PE3341/2 EEPROM programming Board (P/N: 101/0121~01A)
- 10 PE3341 or PE3342 2.7 GHz Integer-N EEPROM PLL
- 1 1 CD-ROM or two floppy disks with programming software included
- 2 Jumpers
- 1 10-Wire Interface Cable
- 1 2-Wire Power Supply Cable
- 1 4- Wire Power Supply Cable

In order to program the part using EEPROM programming mode the Programming Kit software will need to be installed on a computer with the following minimum requirements:

PC Compatible with Windows™ '95/98/2000

Mouse

Parallel Port

HTML Browser to access CD contents

CAUTION: *The EEPROM programming circuit contains components that might be damaged by exposure to voltages in excess of the specified voltage, including voltages produced by electrostatic discharges. Handle the board in accordance with procedures for handling static-sensitive components. Avoid applying excessive voltages to the power supply terminals or signal inputs or outputs.*

10-Wire Interface Cable Configuration

Table 1 shows the 10-wire interface cable configuration.

Table 1. 10-Wire interface cable configuration.

Pin No. of DB-25 socket	Pin No. of 10-Wire connector
8 Yellow	1 EE_WRT, yellow
7 Brown	2 E_WR, brown
6 Blue	3 EE_DEL, blue
5 Orange	4 EE_PROG (EELoad), orange
9 Violet	5 EE_SEL, violet
10 Gray	6 DOUT, gray
2 Red	7 S_CLK, red
3 White	8 S_DATA, white
4 Black	9 S_WR, black
18 Green	10 GND, green

EE Programming Kit Setup

1. As shown in Figure 1, verify a jumper is placed on the connector J4 between VPP Pin 2 (VPP, the center pin) and Pin 1 (pin at left).
2. Verify a jumper is placed on the connector J2.
3. Verify all switches of SW1 if installed are in “OFF” position.
4. Connect your computer’s printer port to J1 on the programming board via a 10-wire interface cable.
5. Connect power supply cables to the EEPROM programming board as shown in Figure 1. Verify all supplies are turned off prior to connecting to programming board.
 - ➔ With 2-wire power supply cable, connect the +3 V supply to J3 (J3-1 +3 and J3-3 GND)
 - ➔ With 4-wire power supply cable, connect the +13 V supply to J6-4 (red connector), the -9 V supply to J6-1 (black connector), and the ground to J6-2 & -3 (green connector).

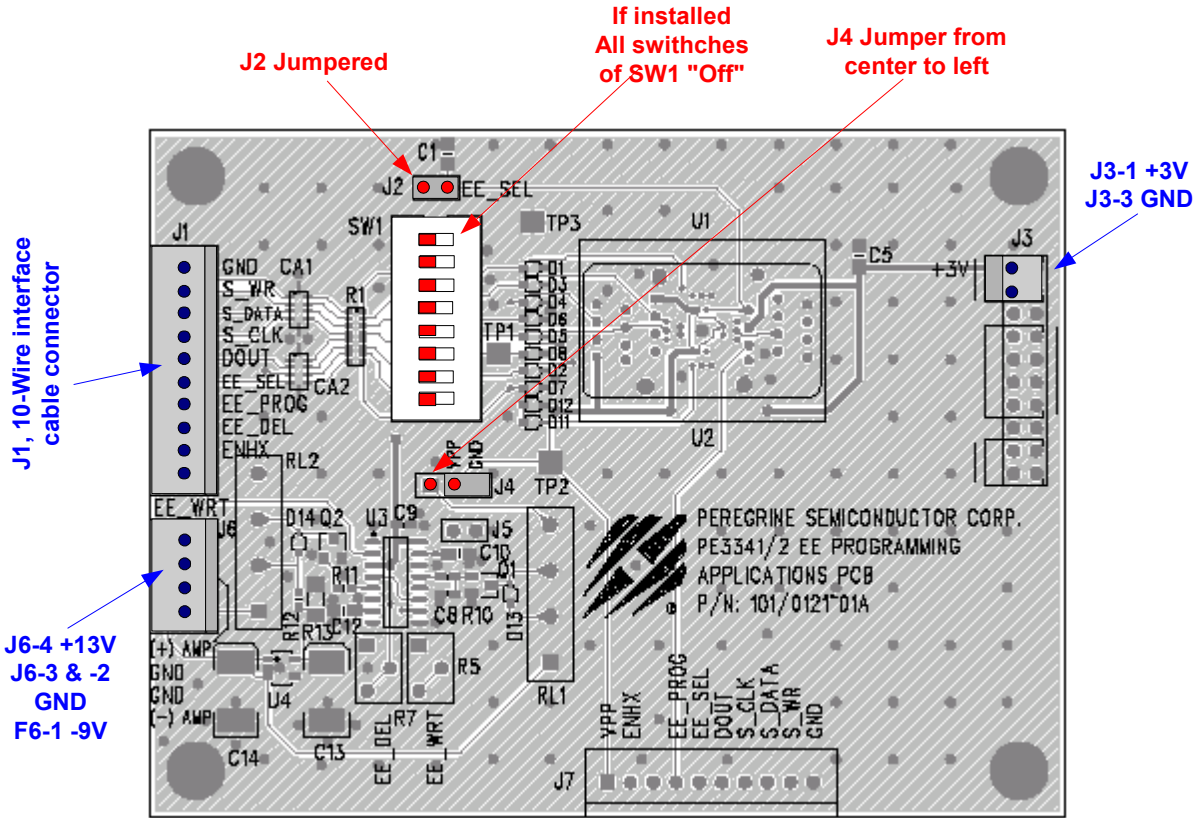


Figure 1. PE3341/2 EEPROM programming board default jumper & switch settings



Software Section

Software Installation Instructions

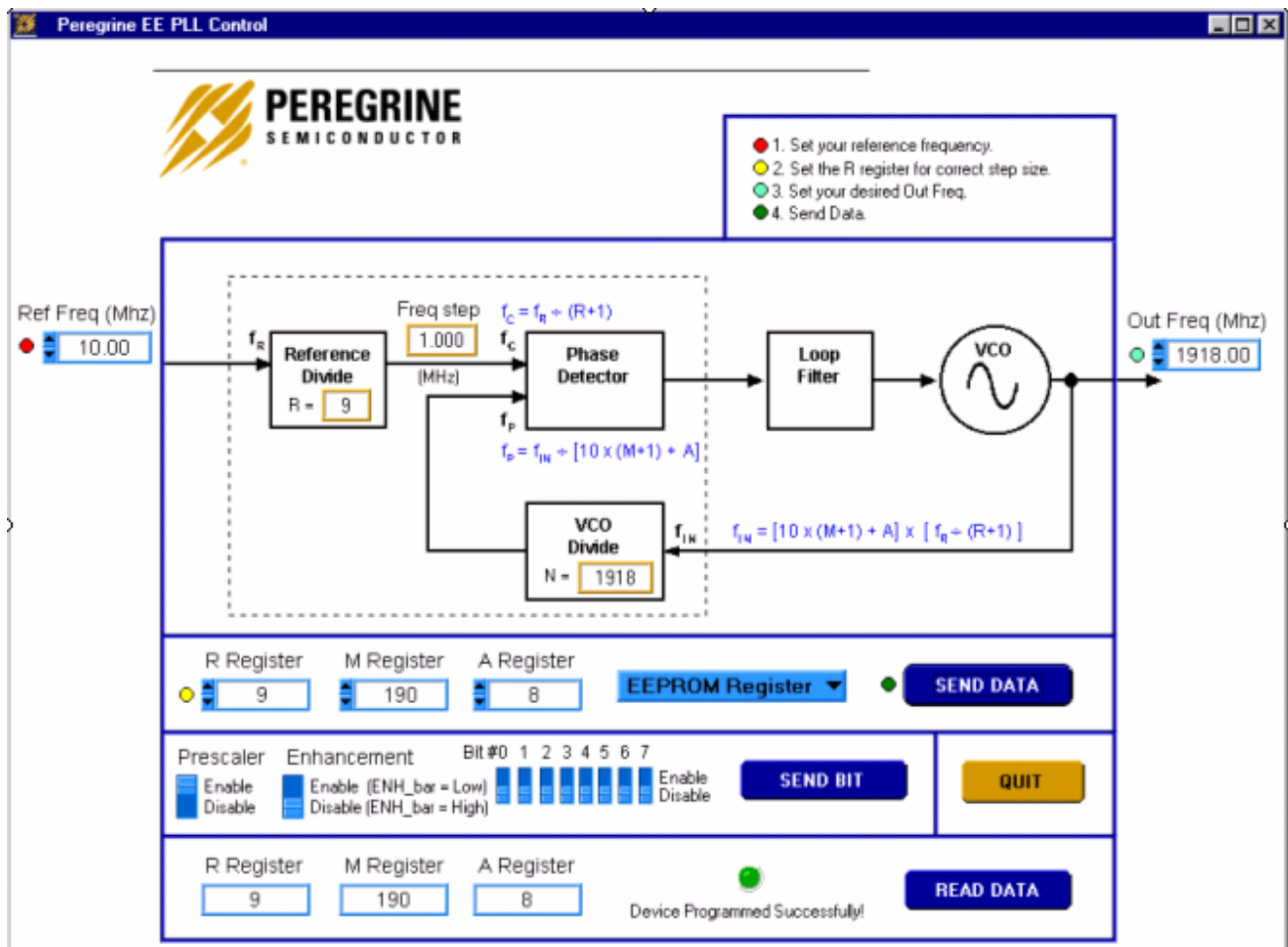
In order to setup the Programming Software on your computer:

1. Start Microsoft Windows™ '95/98/2000.
2. If the software comes with a CD, insert the CD to CDROM drive. Otherwise, insert the floppy disk 1 to the floppy disk drive. Search the “setup.exe” file.
3. Double-click the “setup.exe” file and follow the on-screen instructions to finish installation.

Software Operation Instructions

With the EE Programming kit set up completed as described in the previous section, the follow steps are for programming of the EEPROM register.

- Step 1: Start the “Peregrine EE PLL Control Software” program. Figure 2 shows one example of the screen.
- Step 2: Verify the “EEPROM Register” is displayed in the drop down menu in the middle section.
- Step 3: Enter reference frequency (crystal frequency) value in MHz into the Ref Freq box (marked by red dot at left)
- Step 4: Set reference counter (R counter) to the desired value by entering it into the R Register box in the middle left side (marked by yellow dot at left). Note that the numbers in the orange boxes are computed values and cannot be directly typed in.
- Step 5: Verify “frequency step” (which is also called phase detector frequency) is at the desired value.
- Step 6: Set the VCO frequency to the appropriate value by typing it into the “Out Freq (MHz)” box. Once the frequency value is entered into the box, the corresponded M and A register values are displayed in the “M Register” and “A Register” Boxes, respectively. Instead of entering the frequency value into the “Out Freq (MHz)” box, the frequency can also be changed by entering M register and A register values into the “M Register” and “A Register” boxes directly.
- Step 7: Turn on all power supplies (+3, +12.5 and -9 V) with no part in the IC holder.
- Step 8: Place carefully one PE3341/2 IC in the IC holder.
- Step 9: Click the “SEND DATA” button to send data to the PLL.



- ➔ Light blue number boxes identify user defined program states and can be modified by utilizing the arrows next to the boxes or clicking into the box and typing the appropriate value. Either clicking on the light blue switches or typing the counter variable into the text box can program the registers.
- ➔ Programming of the secondary or EEPROM register is selected by the light blue pull down box. Note: EEPROM register is the default selection. Do not change it.
- ➔ The prescaler disable and the enhancement mode enable functions are currently unavailable.
- ➔ Data is sent to the evaluation board by clicking the dark blue “SEND DATA” button.

Figure 2. Example of EEPROM Programming Software Screen.

Step 10: The program will automatically read back the R, M and A Register values and display them in the bottom section. If the EEPROM is programmed successfully, a message “Device Programmed Successfully!” with a green button will display in the bottom section as shown in Fig. 2. Otherwise, if any of the read back values is different from the programmed value, a message “Device Programming Failed!” with a red button will display as shown in Fig. 3. This feature can be

used to read back the R, M and A Register values of a previous programmed part. To do this, just complete Steps 7 and 8 and then click the “READ DATA” button in the right bottom corner. The “READ DATA” function will read back and display the R, M and A Register values of a previous programmed part without showing other message.

Step 11: Remove the programmed IC from the IC holder with a pair of tweezers or other sucking device with insulated handles.

Step 12: To program additional parts, repeat the steps 8 to 11. Do not recycle any power supply while a PE3341/2 IC is in the IC holder. If doing so, the transit created by turning power supply on or off could erase or re-program the EEPROM content. A solution is being working on.

Step 13: To exit the program, click the “QUIT” button.

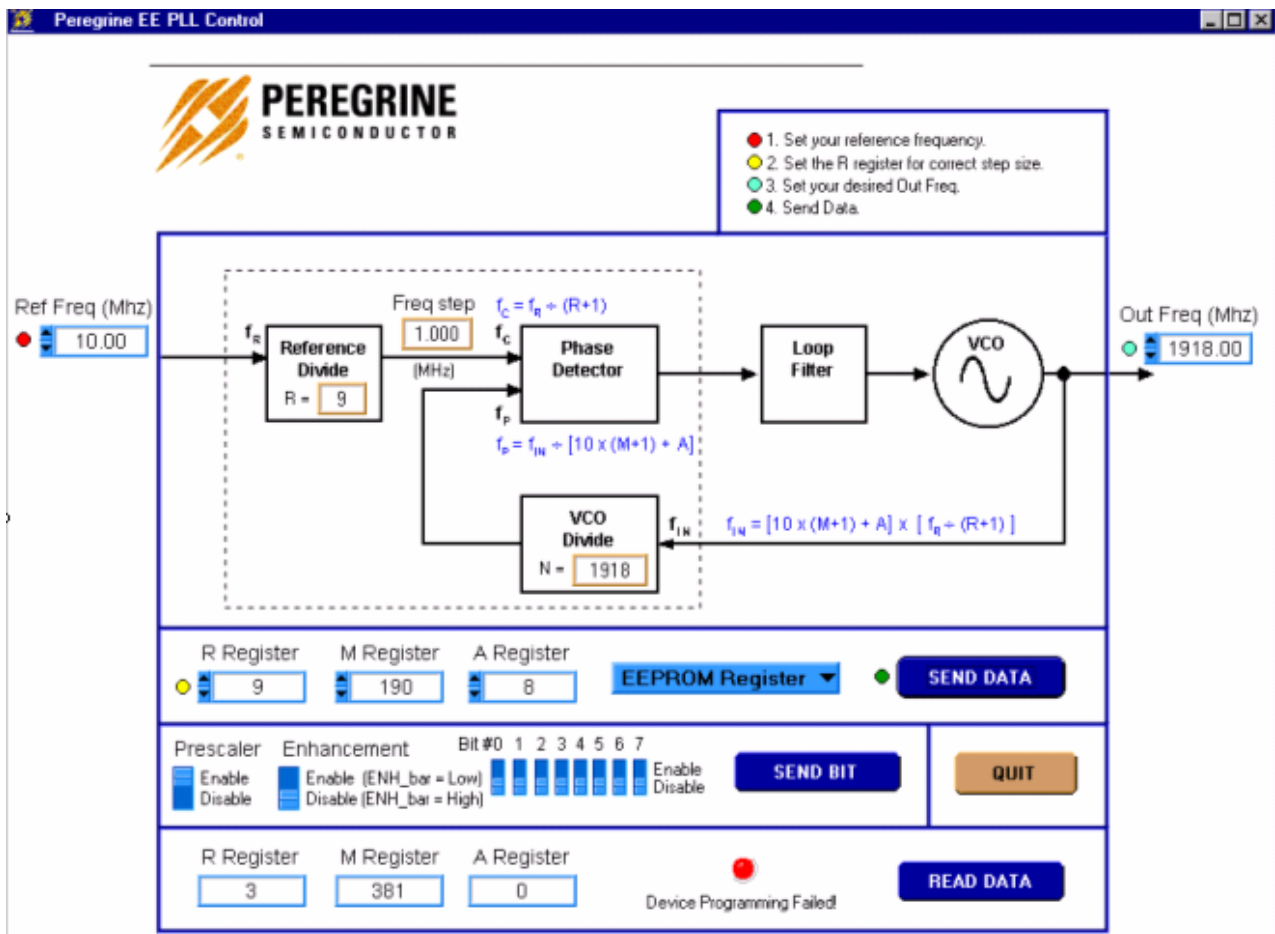


Figure 3. Example of EEPROM Programming Software Screen when the programming is failed.

SUNSTAR 商斯达实业集团是集研发、生产、工程、销售、代理经销、技术咨询、信息服务等为一体的高科技企业，是专业高科技电子产品生产厂家，是具有 10 多年历史的专业电子元器件供应商，是中国最早和最大的仓储式连锁规模经营大型综合电子零部件代理分销商之一，是一家专业代理和分销世界各大品牌 IC 芯片和电子元器件的连锁经营综合性国际公司，专业经营进口、国产名厂名牌电子元件，型号、种类齐全。在香港、北京、深圳、上海、西安、成都等全国主要电子市场设有直属分公司和产品展示展销窗口门市部专卖店及代理分销商，已在全国范围内建成强大统一的供货和代理分销网络。我们专业代理经销、开发生产电子元器件、集成电路、传感器、微波光电元器件、工控机/DOC/DOM 电子盘、专用电路、单片机开发、MCU/DSP/ARM/FPGA 软件硬件、二极管、三极管、模块等，是您可靠的一站式现货配套供应商、方案提供商、部件功能模块开发配套商。商斯达实业公司拥有庞大的资料库，有数位毕业于著名高校——有中国电子工业摇篮之称的西安电子科技大学（西军电）并长期从事国防尖端科技研究的高级工程师为您精挑细选、量身订做各种高科技电子元器件，并解决各种技术问题。

微波光电部专业代理经销高频、微波、光纤、光电元器件、组件、部件、模块、整机；电磁兼容元器件、材料、设备；微波 CAD、EDA 软件、开发测试仿真工具；微波、光纤仪器仪表。欢迎国外高科技微波、光纤厂商将优秀产品介绍到中国、共同开拓市场。长期大量现货专业批发高频、微波、卫星、光纤、电视、CATV 器件：晶振、VCO、连接器、PIN 开关、变容二极管、开关二极管、低噪晶体管、功率电阻及电容、放大器、功率管、MMIC、混频器、耦合器、功分器、振荡器、合成器、衰减器、滤波器、隔离器、环行器、移相器、调制解调器；光电子元件和组件：红外发射管、红外接收管、光电开关、光敏管、发光二极管和发光二极管组件、半导体激光二极管和激光器组件、光电探测器和光接收组件、光发射接收模块、光纤激光器和光放大器、光调制器、光开关、DWDM 用光发射和接收器件、用户接入系统光收发器件与模块、光纤连接器、光纤跳线/尾纤、光衰减器、光纤适配器、光隔离器、光耦合器、光环行器、光复用器/转换器；无线收发芯片和模组、蓝牙芯片和模组。

更多产品请看本公司产品专用销售网站：

商斯达微波光电产品网：[HTTP://www.rfoe.net/](http://www.rfoe.net/)

商斯达中国传感器科技信息网：<http://www.sensor-ic.com/>

商斯达工控安防网：<http://www.pc-ps.net/>

商斯达电子元器件网：<http://www.sunstare.com/>

商斯达消费电子产品网：<http://www.icasic.com/>

商斯达实业科技产品网：<http://www.sunstars.cn/> 射频微波光电元器件销售热线：

地址：深圳市福田区福华路福庆街鸿图大厦 1602 室

电话：0755-83396822 83397033 83398585 82884100

传真：0755-83376182 (0) 13823648918 MSN: SUNS8888@hotmail.com

邮编：518033 E-mail: szss20@163.com QQ: 195847376

深圳赛格展销部：深圳华强北路赛格电子市场 2583 号 电话：0755-83665529 25059422

技术支持：0755-83394033 13501568376

欢迎索取免费详细资料、设计指南和光盘；产品凡多，未能尽录，欢迎来电查询。

北京分公司：北京海淀区知春路 132 号中发电子大厦 3097 号

TEL: 010-81159046 82615020 13501189838 FAX: 010-62543996

上海分公司：上海市北京东路 668 号上海赛格电子市场 D125 号

TEL: 021-28311762 56703037 13701955389 FAX: 021-56703037

西安分公司：西安高新开发区 20 所(中国电子科技集团导航技术研究所)

西安劳动南路 88 号电子商城二楼 D23 号

TEL: 029-81022619 13072977981 FAX: 029-88789382