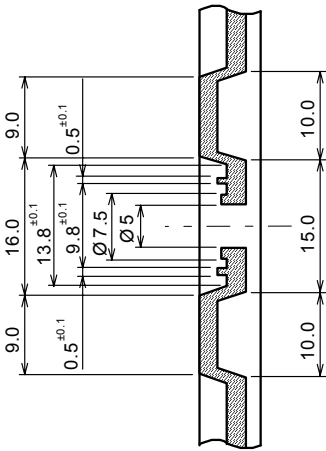
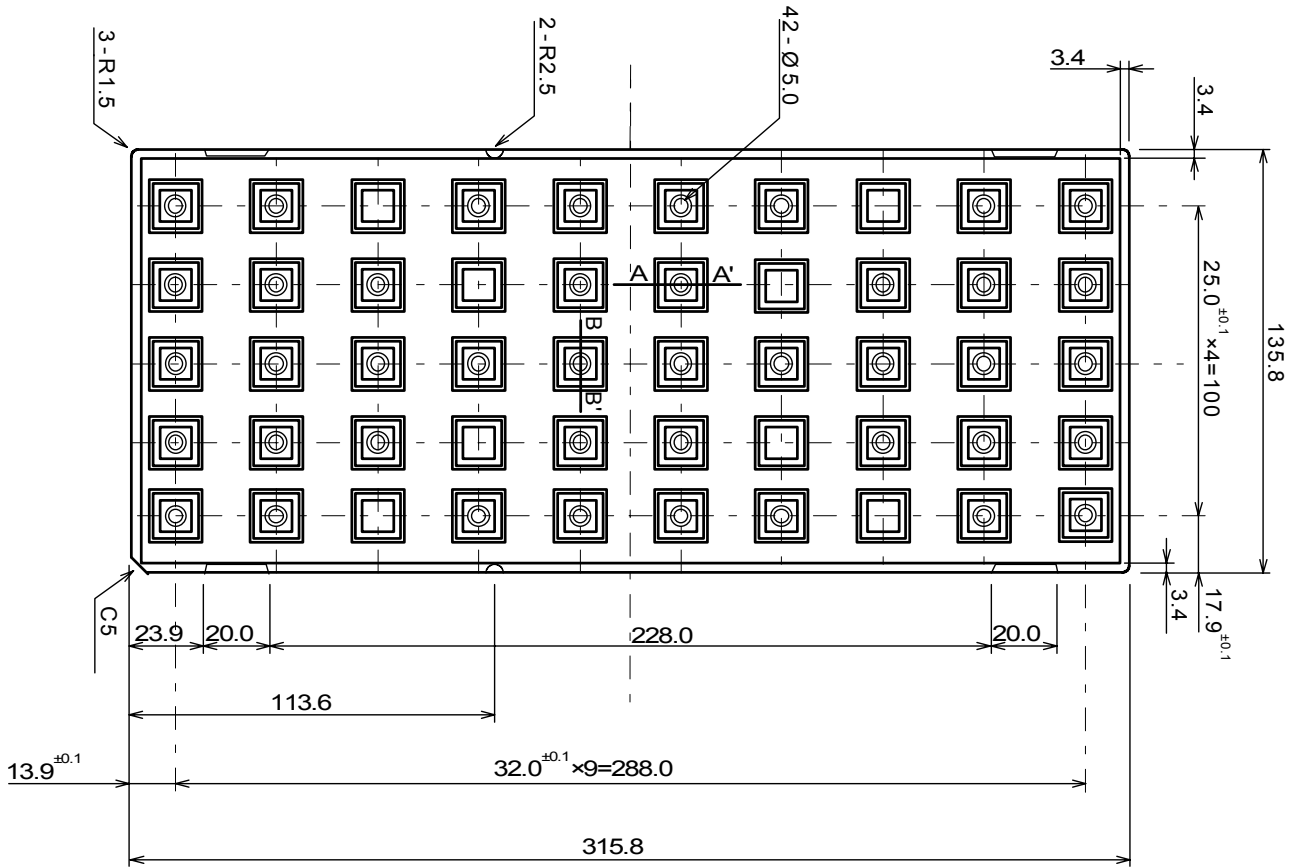
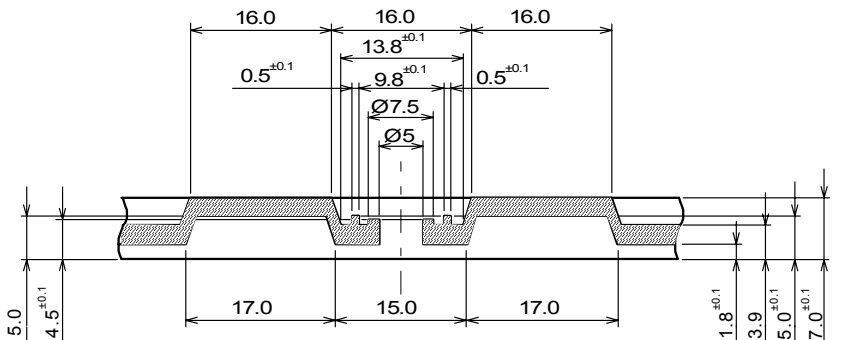


TRAY DIMENSIONS

(1) Hard Tray Dimensions for QFP44-A1, QFP56-A1



BB Cross Section



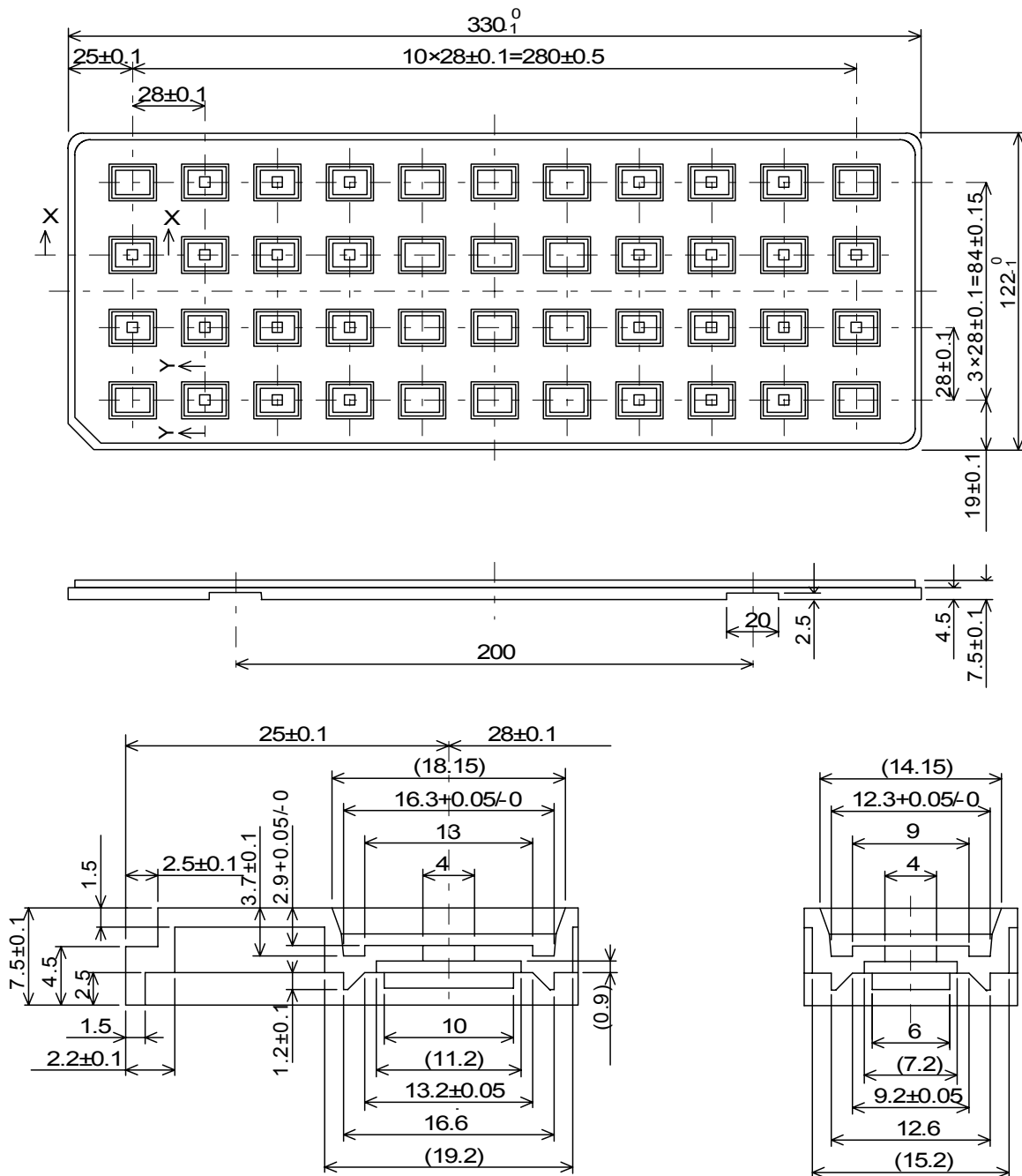
AA Cross Section

Unit : mm

Material	Polypropylene (Anti Electrostatic treatment)
Maximum Contents	50pcs

TRAY DIMENSIONS

(2) Hard Tray Dimensions for QFP48-P1



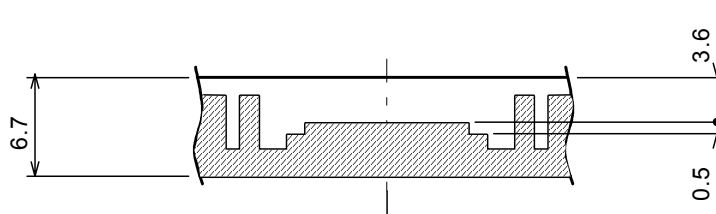
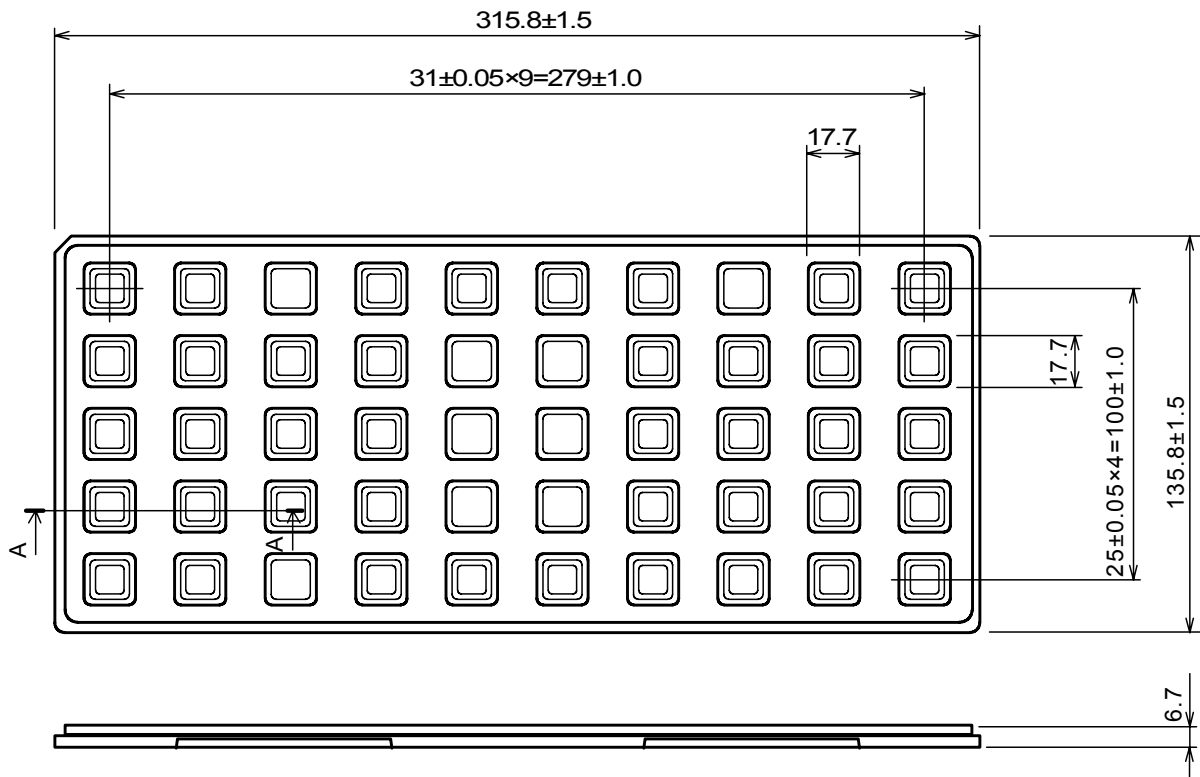
Y-Y Cross Section

Unit : mm

Material	Polyphenylene ether
Maximum Contents	44pcs

TRAY DIMENSIONS

(3) Hard Tray Dimensions for QFP64-B2



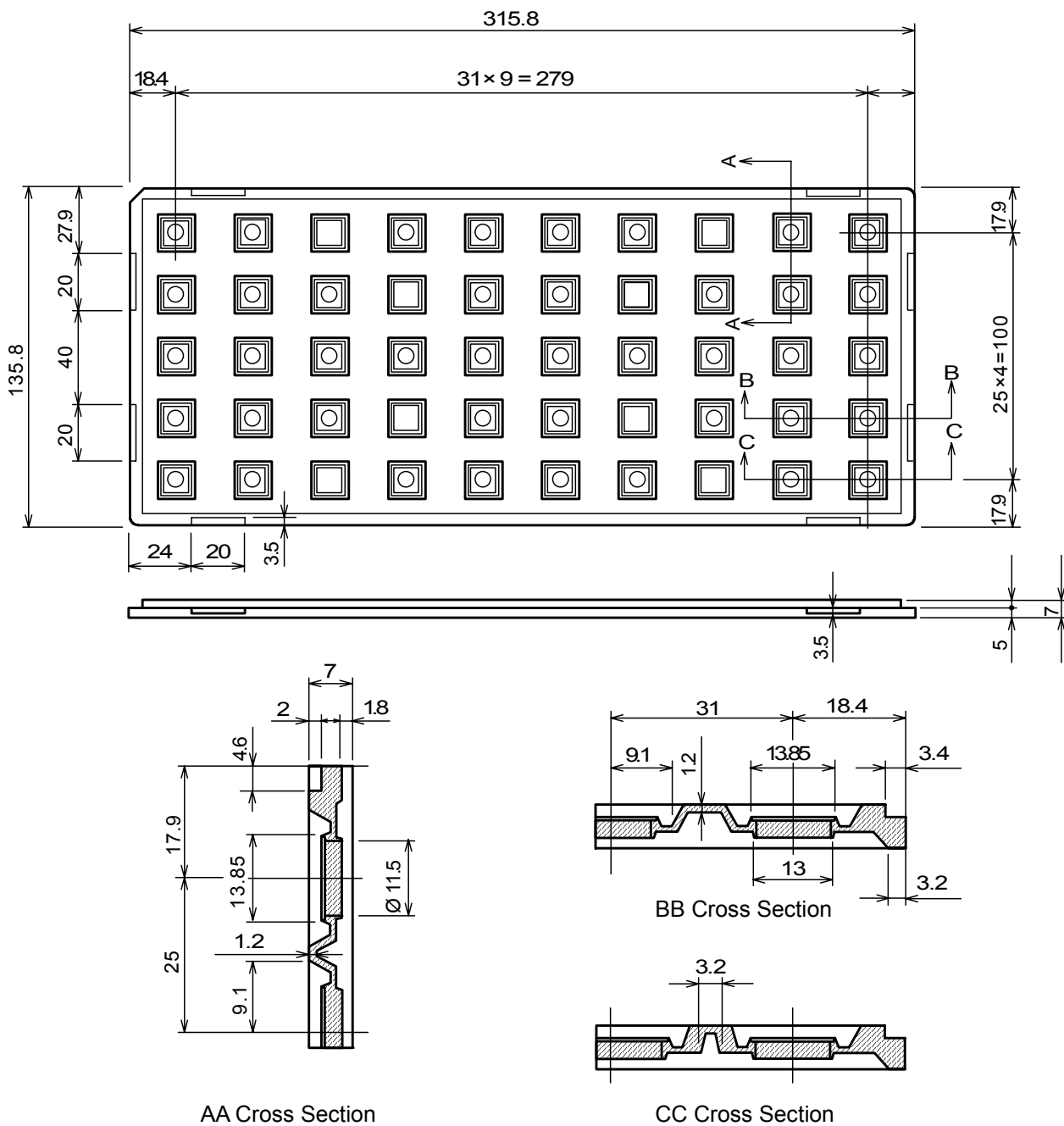
AA Cross Section

Unit : mm

Maximum Contents	50pcs
------------------	-------

TRAY DIMENSIONS

(4) Hard Tray Dimensions for QFP64-B3

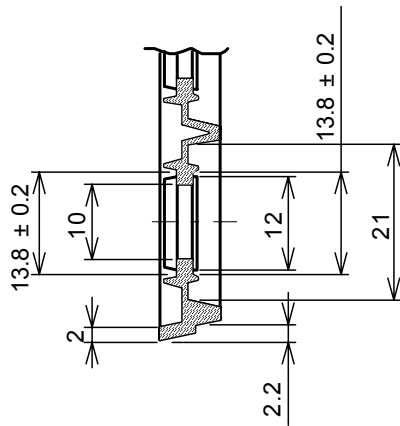
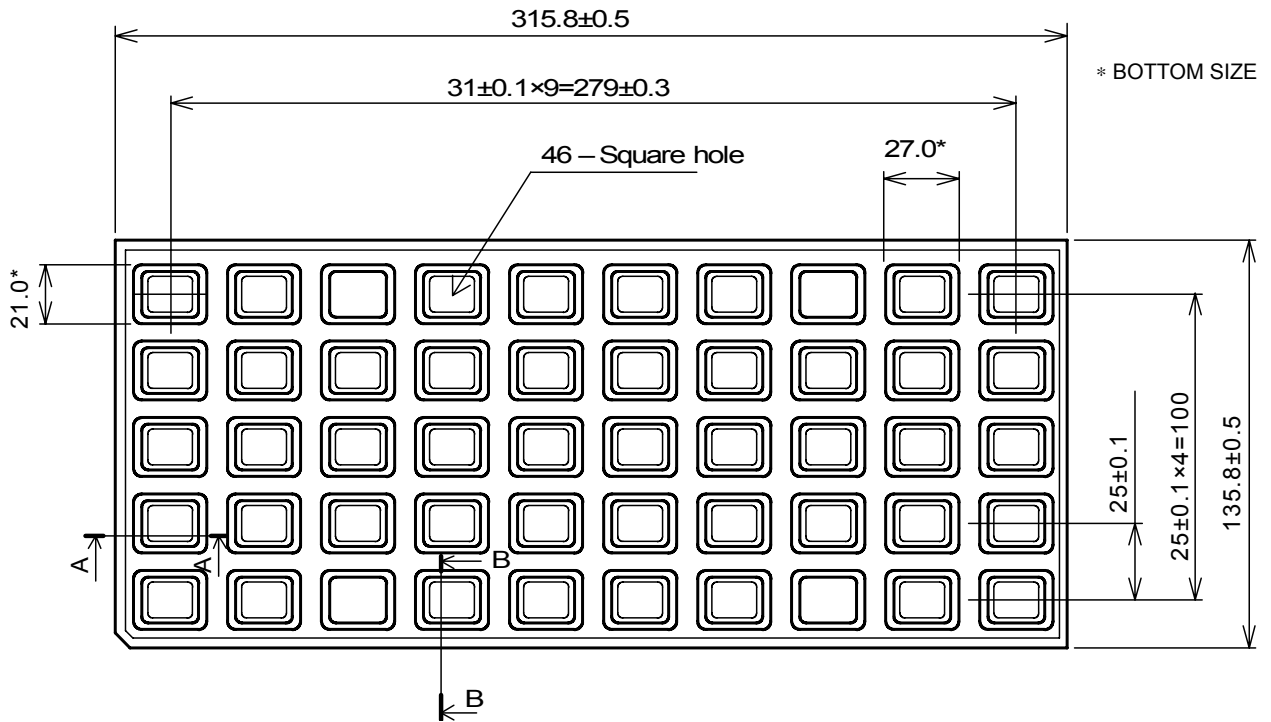


Unit : mm

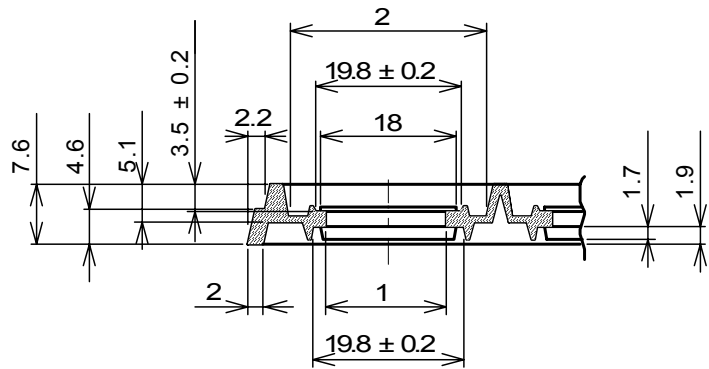
Material	Conductive Resin
Maximum Contents	50pcs

TRAY DIMENSIONS

(5) Hard Tray Dimensions for QFP64-C1/C2, QFP80-C1(1),(2)/C2, QFP100-C1(1),(2)/C2



AA Cross Section



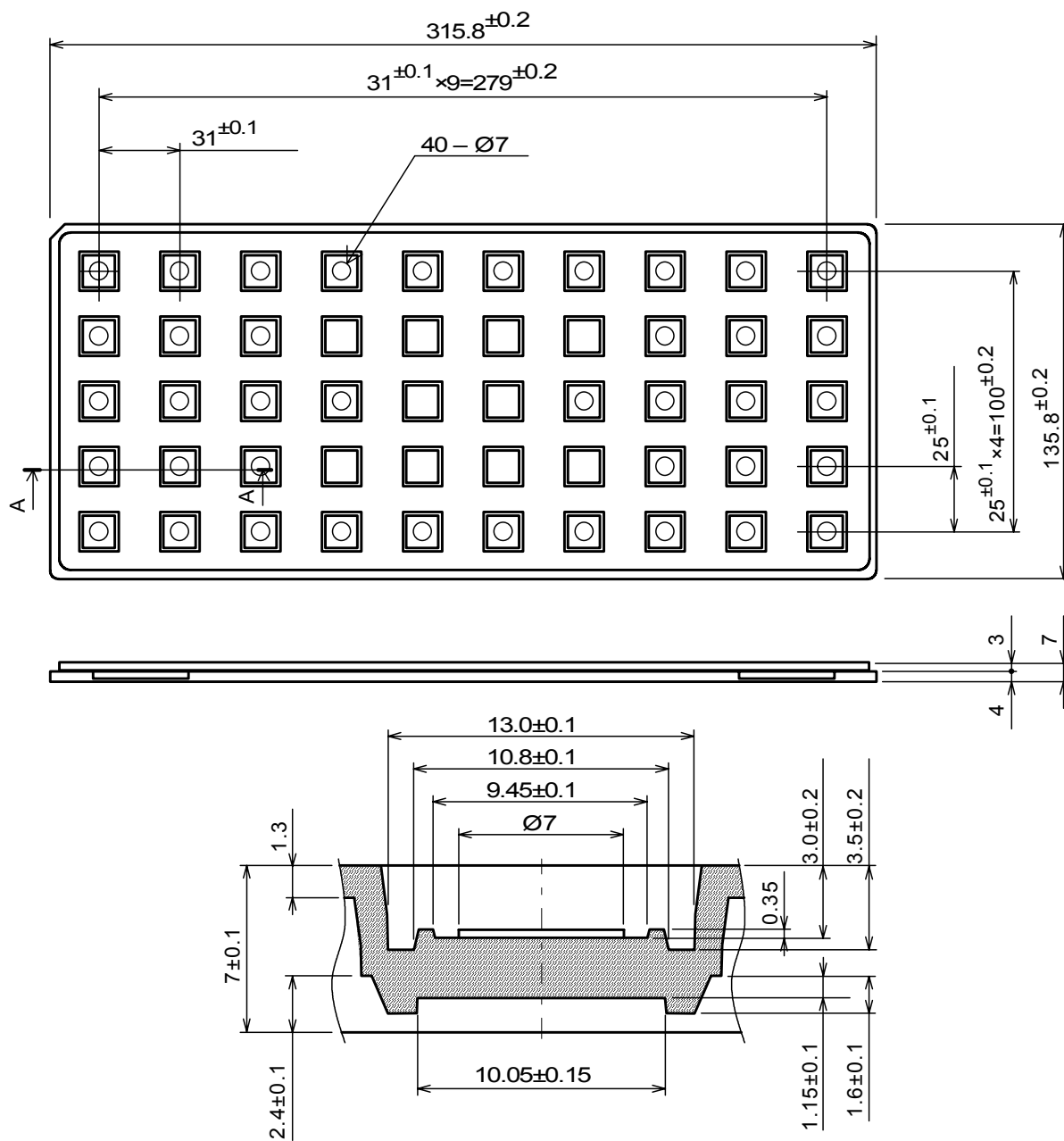
BB Cross Section

Unit : mm

Material	Polyphenylene ether (Anti Electrostatic treatment)
Maximum Contents	50pcs

TRAY DIMENSIONS

(6) Hard Tray Dimensions for QFP64-D1



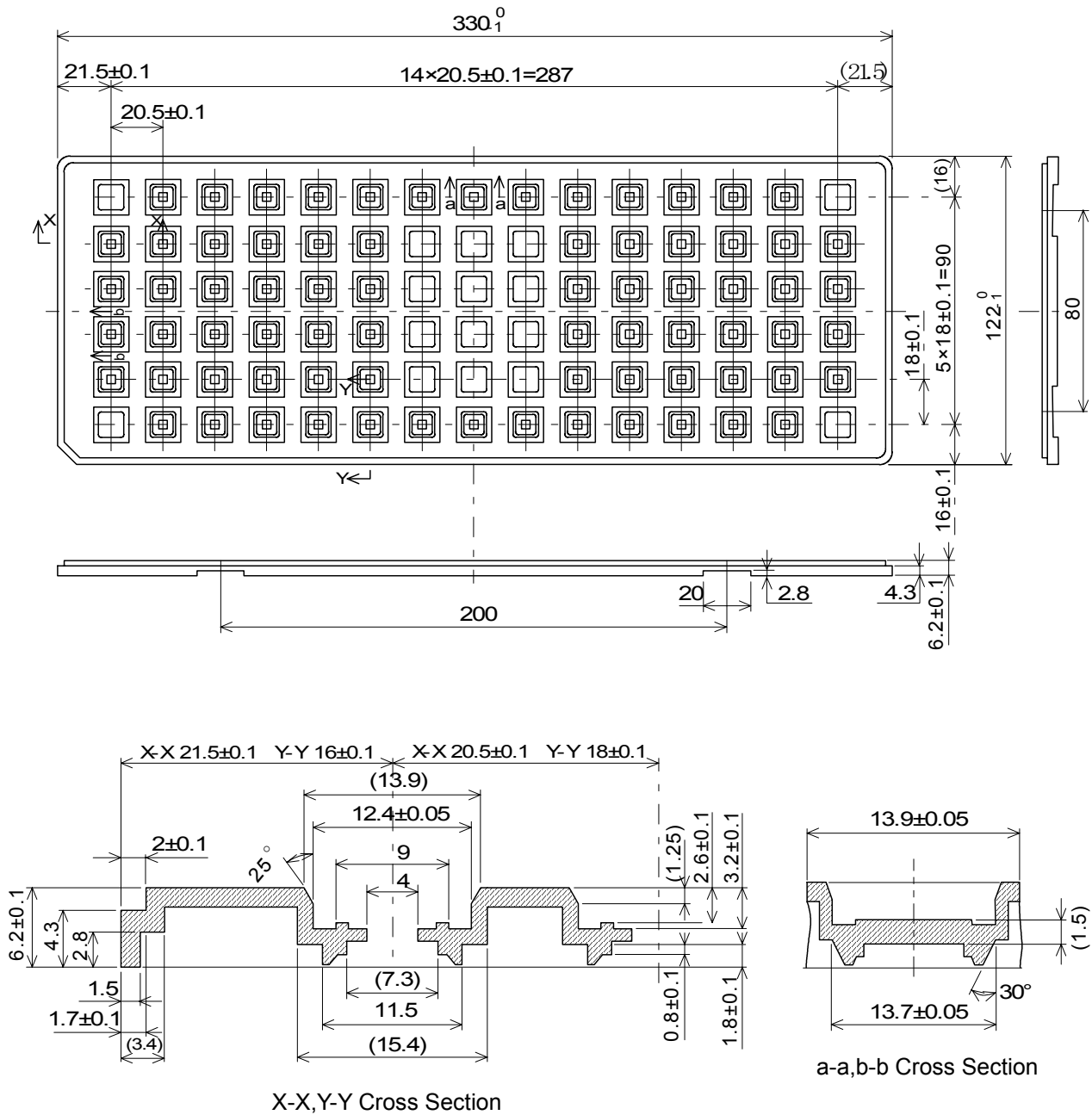
AA Cross Section

Unit : mm

Material	Polystyrene
Maximum Contents	50pcs

TRAY DIMENSIONS

(7) Hard Tray Dimensions for QFP64-H1

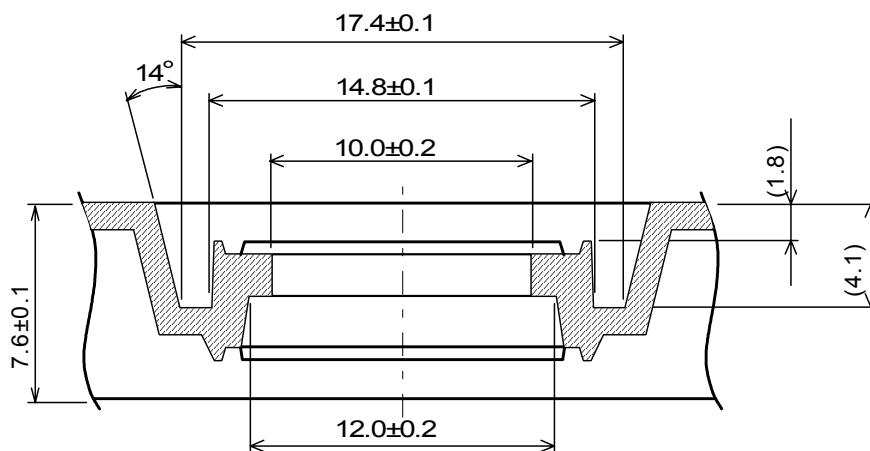
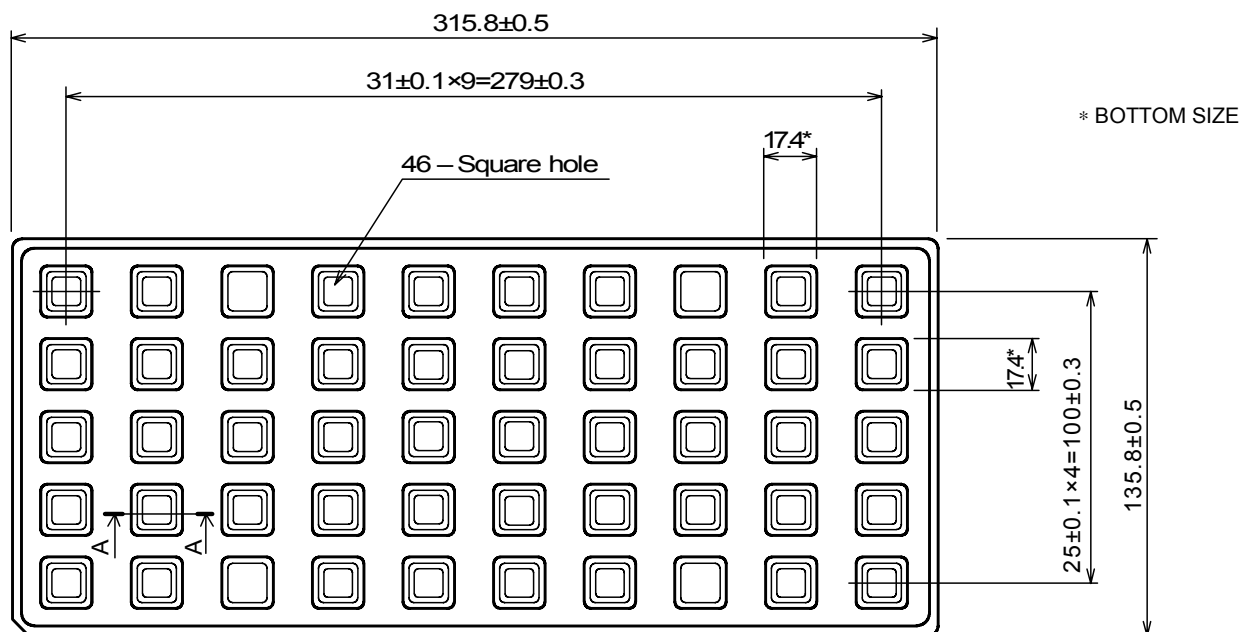


Unit : mm

Material	Polyphenylene ether
Maximum Contents	90pcs

TRAY DIMENSIONS

(8) Hard Tray Dimensions for QFP64-G1, QFP80-G1, QFP100-G1



AA Cross Section

Unit : mm

Material	Polypropylene (Anti Electrostatic treatment)	
Maximum Contents	50pcs	