

### 50MHz VCXO IC

#### ■GENERAL DESCRIPTION

The NJU6343 is VCXO IC up to 50MHz, which consists of an oscillation amplifier, internal variable capacitor, divider, and 3-state output buffer. The pull range is  $\pm 100\text{ppm}$  to use internal variable capacitor only, depend on the external crystal parameters.

The oscillation amplifier is realized very low standby current using NAND circuit.

The 3-state output buffer is C-MOS compatible and up to 30pF load.

#### ■PACKAGE OUTLINE

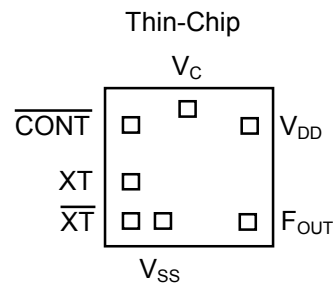


NJU6343AC-D

#### ■FEATURES

- Operating Voltage 3.0 to 3.6V
- Maximum Oscillation Frequency 50MHz
- Frequency Pulling Range  $\pm 100\text{ppm}$
- Low Operating Current
- High Fan-out  $I_{OH}/I_{OL}=6\text{mA} @3.3\text{V}$
- Oscillation Stop and Output Stand-by Function
- 3-State Output Buffer
- Internal Variable Capacitor
- Package Outline Thin-Chip
- C-MOS Technology

#### ■PAD LOCATION



#### ■LINE-UP TABLE

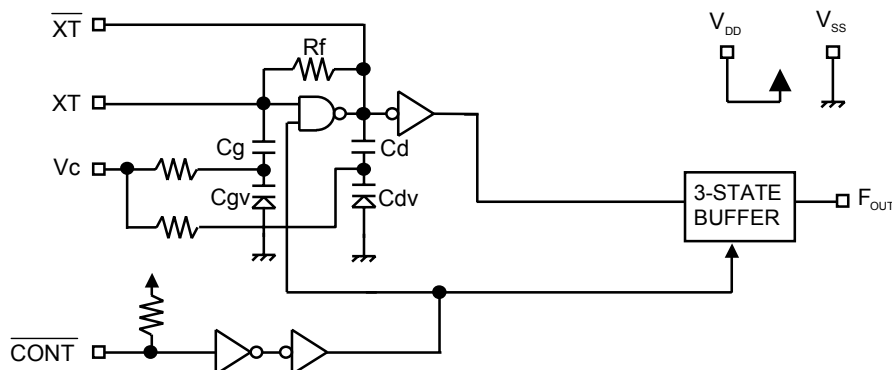
Type No.	F <sub>OUT</sub>	Internal Connect	C <sub>g</sub> /C <sub>d</sub>
NJU6343 A	f <sub>0</sub>	—	23/23pF

#### ■PAD CONFIGURATION

No	Pad Name	X	Y
1	CONT	-400	215
2	XT	-400	-75
3	XT	-400	-300
4	V <sub>SS</sub>	-235	-300
5	F <sub>OUT</sub>	400	-300
6	V <sub>DD</sub>	400	200
7	V <sub>C</sub>	-10	300

Starting Point: Chip Center Unit[um]  
 Chip Size: 1.1x0.9mm  
 Thin-Chip Thickness(-D): 200 $\pm$ 20um  
 Pad Size: 90x90um  
 Note1) Substrate: V<sub>DD</sub> level

#### ■BLOCK DIAGRAM



**■ TERMINAL DESCRIPTION**

SYMBOL	FUNCTION	
$\overline{\text{CONT}}$	Oscillation and 3-state Output Buffer Control	
	$\overline{\text{CONT}}$	$F_{\text{OUT}}$
	H or OPEN	Output frequency $f_0$
	L	Oscillation Stop and High impedance Output
$\overline{\text{XT}}$	Quartz Crystal Connecting Terminals	
$V_{\text{SS}}$	$V_{\text{SS}}=0\text{V}$	
$F_{\text{OUT}}$	Frequency Output	
$V_{\text{C}}$	Frequency Control	
$V_{\text{DD}}$	$V_{\text{DD}}=3.3\text{V}$	

**■ ABSOLUTE MAXIMUM RATINGS**

(Ta=25°C)

PARAMETER	SYMBOL	RATING	UNIT
Supply Voltage	$V_{\text{DD}}$	-0.5 to +7.0	V
Input Voltage	$V_{\text{IN}}$	$V_{\text{SS}}-0.5$ to $V_{\text{DD}}+0.5$	V
Output Voltage	$V_{\text{O}}$	-0.5 to $V_{\text{DD}}+0.5$	V
Input Current	$I_{\text{IN}}$	$\pm 10$	mA
Output Current	$I_{\text{O}}$	$\pm 25$	mA
Operating Temperature Range	$T_{\text{opr}}$	-40 to +85	°C
Storage Temperature Range	$T_{\text{stg}}$	-55 to +125	°C

 Note2) If the supply voltage( $V_{\text{DD}}$ ) is less than 7.0V, the input voltage do not over the  $V_{\text{DD}}$  level.

 Note3) Decoupling capacitor should be connected between  $V_{\text{DD}}$  and  $V_{\text{SS}}$  due to the stabilized operation for the circuit.

## ■ ELECTRICAL CHARACTERISTICS

(Ta=25°C)

PARAMETER	SYMBOL	CONDITIONS	MIN	TYP	MAX	UNIT
Operating Voltage	V <sub>DD</sub>		3.0	3.3	3.6	V

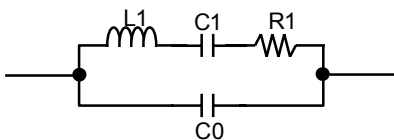
(V<sub>DD</sub>=3.3V, V<sub>C</sub>=V<sub>DD</sub>/2, Ta=25°C)

PARAMETER	SYMBOL	CONDITIONS	MIN	TYP	MAX	UNIT
Operating Current	I <sub>DD</sub>	Type A, fosc=20MHz, C <sub>L</sub> =15pF			5	mA
Oscillation Stopping Current	I <sub>STB</sub>	CONT=V <sub>SS</sub> , No load		2	5	uA
Stand-by Current	I <sub>st</sub>	CONT=XT=V <sub>SS</sub> , No load Note4)			1	uA
Input Voltage	V <sub>IH</sub>		2.3		3.3	V
	V <sub>IL</sub>		0		1.0	V
Output Current	I <sub>OH</sub>	V <sub>OH</sub> =2.97V	6			mA
	I <sub>OL</sub>	V <sub>OL</sub> =0.33V	6			mA
Input Current	I <sub>IN</sub>	CONT=0.8V <sub>DD</sub>		10	15	uA
		CONT=0.2V <sub>DD</sub>		1.8	3.0	uA
Control Input Voltage	V <sub>C</sub>		0		V <sub>DD</sub>	V
Control Input Current	I <sub>VC</sub>	V <sub>C</sub> =0 to V <sub>DD</sub>			±1	uA
3-state Off Leakage Current	I <sub>OZ</sub>	CONT=V <sub>SS</sub> , F <sub>OUT</sub> =V <sub>DD</sub> or V <sub>SS</sub>			±0.1	uA
Feedback Resistance	R <sub>f</sub>			255		kΩ
Internal Capacitor	C <sub>g</sub> /C <sub>d</sub>	fosc=20MHz		23/23		pF
	C <sub>gv</sub> /C <sub>dv</sub>	fosc=20MHz, V <sub>C</sub> =0V Note5)		10/10		pF
		fosc=20MHz, V <sub>C</sub> =V <sub>DD</sub> Note5)		4/4		pF
Maximum Oscillation Frequency	F <sub>MAX</sub>		50			MHz
Frequency Pulling Range	Δf/f <sub>0</sub>	V <sub>C</sub> =0 to V <sub>DD</sub>		±100		ppm
Frequency Linearity	Lin	V <sub>C</sub> =0.1V <sub>DD</sub> to 0.9V <sub>DD</sub>		±10		%
Output Signal Symmetry	SYM	C <sub>L</sub> =15pF, @V <sub>DD</sub> /2	45	50	55	%
		C <sub>L</sub> =30pF, @V <sub>DD</sub> /2	45	50	55	
Output Signal Rise Time	tr	C <sub>L</sub> =15pF, 0.1V <sub>DD</sub> to 0.9V <sub>DD</sub>		2.5	5.0	ns
		C <sub>L</sub> =30pF, 0.1V <sub>DD</sub> to 0.9V <sub>DD</sub>		4.0	8.0	
Output Signal Fall Time	tf	C <sub>L</sub> =15pF, 0.9V <sub>DD</sub> to 0.1V <sub>DD</sub>		2.5	5.0	ns
		C <sub>L</sub> =30pF, 0.9V <sub>DD</sub> to 0.1V <sub>DD</sub>		4.0	8.0	
Output Disable time	t <sub>PLZ</sub>	C <sub>L</sub> =15pF, R <sub>UP</sub> =10kΩ, V <sub>C</sub> =0V			150	ns
Output Enable Time	t <sub>PZL</sub>	C <sub>L</sub> =15pF, R <sub>UP</sub> =10kΩ, V <sub>C</sub> =0V			150	ns
Oscillation Starting	t <sub>START</sub>	C <sub>L</sub> =15pF, V <sub>trigger</sub> =0.9V		1.5	10	ms

Note4) Excluding input current on CONT=V<sub>SS</sub> Terminal.

Note5) The C<sub>gv</sub> and C<sub>dv</sub> is design value.

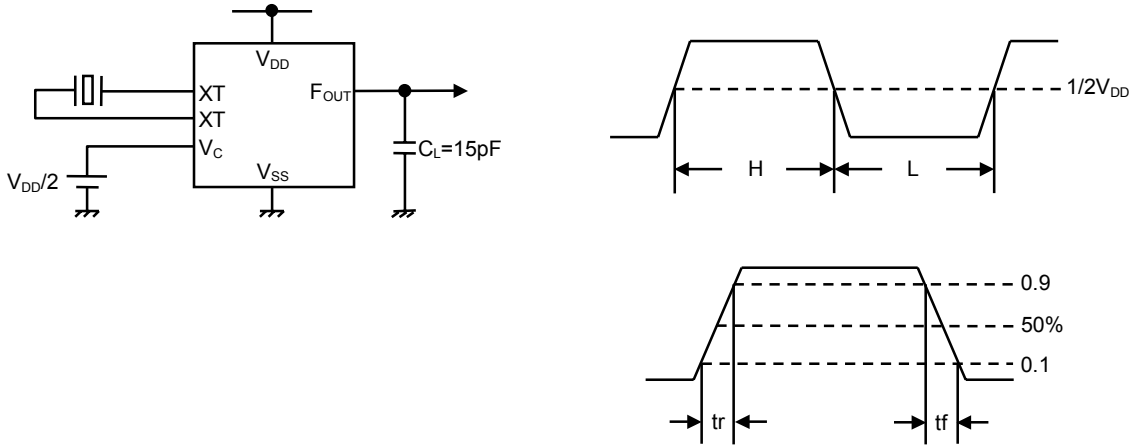
## ■ STANDARD CRYSTAL PARAMETERS FOR ELECTRICAL MEASUREMENTS



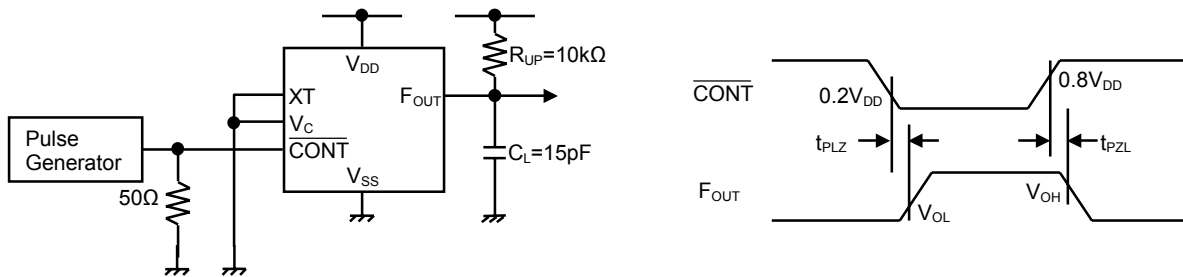
f[MHz]	R1[Ω]	L1[mH]	C1[fF]	C0[pF]	γ
20	16.9	4.7	13.6	3.1	227

MEASUREMENT CIRCUITS

(1) Operating Current / Output Signal Symmetry / Output Signal Rise & Fall Time ( $C_L=15\text{pF}$ )

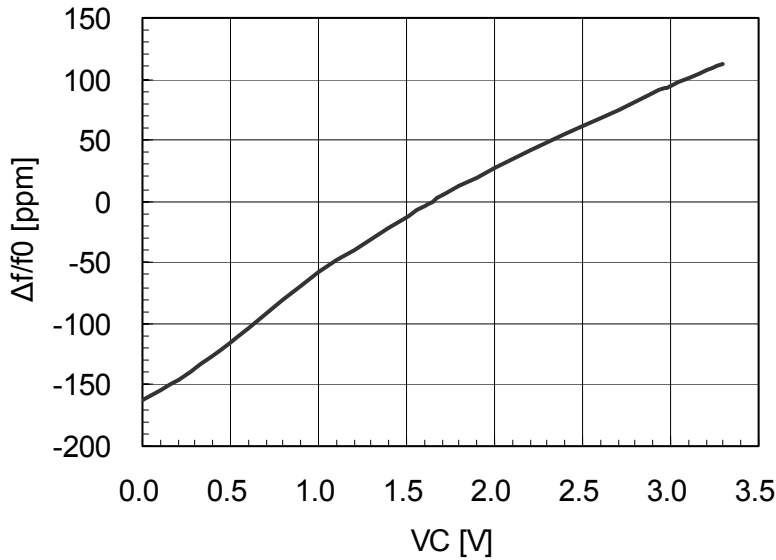


(2) Output Disable & Enable Time ( $C_L=15\text{pF}$ ,  $R_{UP}=10\text{k}\Omega$ ,  $V_C=0\text{V}$ )

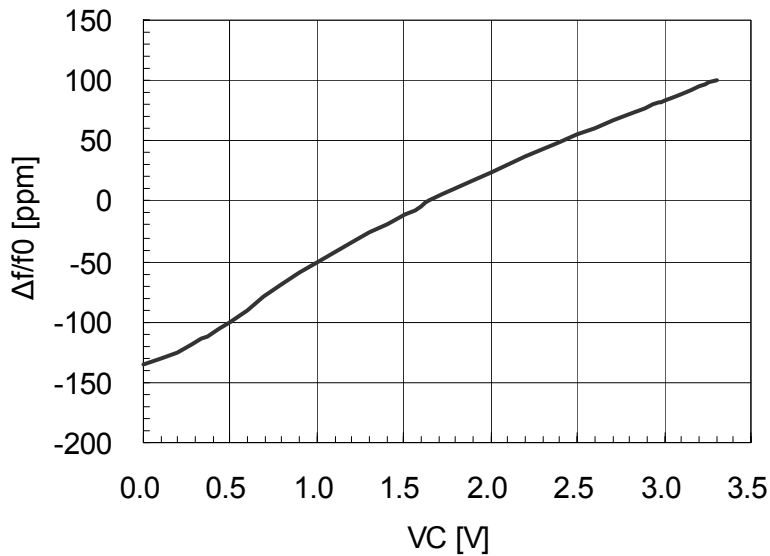


## ■TYPICAL CHARACTERISTICS

(1)Frequency Pulling Range 1 ( $V_{DD}=3.3V$ ,  $f_0=20MHz$ ,  $R1=16.9\Omega$ ,  $L1=4.7mH$ ,  $C1=13.6fF$ ,  $C0=3.1pF$ ,  $\gamma=227$ )



(2)Frequency Pulling Range 2 ( $V_{DD}=3.3V$ ,  $f_0=21MHz$ ,  $R1=13.1\Omega$ ,  $L1=7.4mH$ ,  $C1=7.8fF$ ,  $C0=1.8pF$ ,  $\gamma=238$ )



**[CAUTION]**  
 The specifications on this data book are only given for information, without any guarantee as regards either mistakes or omissions. The application circuits in this data book are described only to show representative usages of the product and not intended for the guarantee or permission of any right including the industrial rights.