

SINGLE SUPPLY RS232C LINE DRIVER/RECEIVER

■ GENERAL DESCRIPTION

The NJU6413A is a single power supply RS232C line driver/receiver composed of DC-DC converter, 2 drivers and 2 receivers.

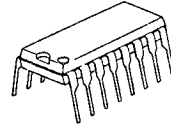
The DC-DC converter is a capacitive type converter and generates RS232C voltage from single 5V supply.

The drivers convert the inputs of TTL level signals into RS232C level signals and limit the slew rate below 30V/μs.

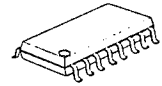
The receiver accepts the input levels both of RS-232C standard minimum requirement level(±3V) and TTL level.

Furthermore, the hysteresis circuit and noise filter incorporated on each receiver ensures noise-free operation.

■ PACKAGE OUTLINE



NJU6413AD

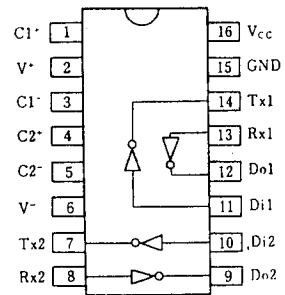


NJU6413AM

■ FEATURES

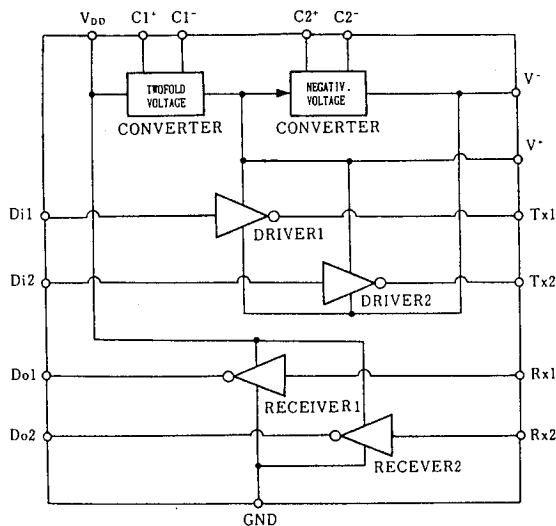
- Based on the RS232C Standard
- DC-DC Converter On-chip
- 2 Drivers and 2 Receivers
- Low Operating Current
- Driver Output Voltage --- ±25V
- Receiver Input Voltage --- ±27V
- Output Impedance at Power-off (Driver) --- 300Ω (Min)
- Slew Rate (Driver) --- 30V/μs (Max)
- TTL-compatible Input (Driver)
- TTL-compatible Input/Output (Receiver)
- Hysteresis Input (Receiver)
- Noise Filter On-chip
- Package Outline --- DIP 16/DMP 16
- C-MOS Technology

■ PIN CONFIGURATION



NJU6413AD/AM

■ BLOCK DIAGRAM



■ TERMINAL DESCRIPTION

PIN No.	SYMBOL	FUNCTION	PIN No.	SYMBOL	FUNCTION
1	V1 ⁺	External Capacitor 1(+)	7, 14	Tx2, Tx1	Driver Output
2	V ⁺	DC/DC Converter Positive Voltage Output	8, 13	Rx2, Rx1	Receiver Input
3	V1 ⁻	External Capacitor 1(-)	9, 12	Do2, Do1	Receiver Output
4	C2 ⁺	External Capacitor 2(+)	10, 11	Di2, Di1	Driver Input
5	C2 ⁻	External Capacitor 2(-)	15	GND	Ground
6	V ⁻	DC/DC Converter Negative Voltage Output	16	V _{CC}	Voltage Supply (+5V)

■ FUNCTIONAL DESCRIPTION
(1) DC-DC Converter Section

The NJU6413A built in a DC-DC converter (required 5 external capacitors). Therefore, the NJU6413A outputs RS-232C voltage though the single 5V supply.

(2) Driver Section

The drivers output the RS-232C standard signals which are converted from the TTL level signal to RS-232C standard level by the level shifter and limit the slew rate below $30V/\mu s$ ($6V/\mu s$ typ), to the RS-232C lines.

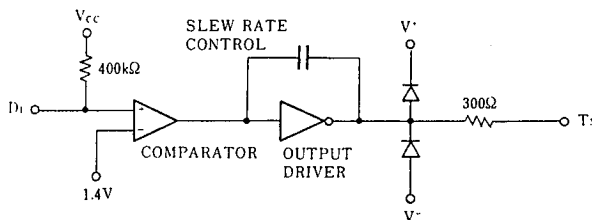
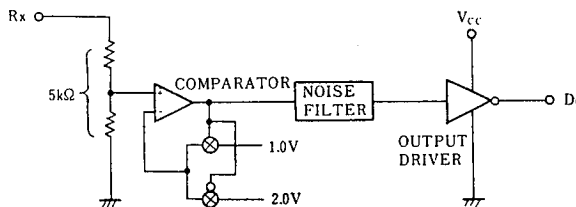
The each driver incorporate series resistance to keep the output impedance to 300Ω or more during the power-off. This series resistance also protect the internal circuits against the overvoltage of $\pm 25V$ impressed from outside.

(3) Receiver Section

The inputs of each receiver incorporate the resistor (TYP: $5k\Omega$) as the drivers load. This resistor also protect the internal circuits against the overvoltage of $\pm 27V$. The receiver accept the both of $\pm 3V$ of RS-232C standard minimum requirement level and TTL level as the threshold voltage of input comparaters are adjusted for both input levels.

The noise less than $1V_{P-P}$ and spike noise below $3\mu s$ pulse width are eliminated by the hysteresis circuits and noise filter.

The output signals are TTL compatible and capable of 8-LSTTL driving.

■ DRIVER SECTION

■ RECEIVER SECTION


■ ABSOLUTE MAXIMUM RATINGS

(Ta=25°C)

PARAMETER		SYMBOL	RATINGS	UNIT
Supply Voltage		V_{CC}	-0.3 ~ +6	V
Receiver	Input Voltage	V_{RI}	± 27	V
	Output Voltage	V_{DO}	-0.3 ~ $V_{CC}+0.3$	
Driver	Input Voltage	V_{DI}	-0.3 ~ $V_{CC}+0.3$	V
	Output Voltage	V_{TX}	± 25	
Power Dissipation		P_D	500 (DIP) 300 (DMP)	mW
Operating Temperature		T_{opr}	-20 ~ +75	°C
Storage Temperature		T_{stg}	-65 ~ +150	°C

 Note1) External power supply to V^+ , V^- is prohibited.

■ ELECTRICAL CHARACTERISTICS

(Ta=25°C)

PARAMETER	SYMBOL	CONDITIONS	MIN	TYP	MAX	UNIT
Operating Voltage	V_{CC}		4.5		5.5	V
Quiescent Current	I_{CC}	$V_{CC}=5.5V$, No load		5	10	mA
DC-DC Converter Positive Output Voltage	V^+	$V_{CC}=4.5V$, $I_{LV}^+=6mA$	6.0			V
DC-DC Converter Negative Output Voltage	V^-	$V_{CC}=4.5V$, $I_{LV}^-=-6mA$	-6.0			

■ DRIVER ELECTRICAL CHARACTERISTICS

 (Ta=25°C, $4.5 \leq V_{CC} \leq 5.5V$, $I_{LV}^+=I_{LV}^- = 0mA$, GND=0V)

PARAMETER	SYMBOL	CONDITIONS	MIN	TYP	MAX	UNIT
Input Voltage	H Level	V_{IH}	2.0			V
	L Level	V_{IL}			0.8	
Maximum Input Current	I_{IL}	$V_{IN}=GND$		15	200	μA
Output Voltage	H Level	V_{OH}	6.0			V
	L Level	V_{OL}			-5.7	
Output Short Current (Note 2)	H Level	I_{OS}^+			45	mA
	L Level	I_{OS}^-			45	
Output Impedance	R_{OUT}	$V_{CC}=V^+=V^-=0V$, $-2V \leq V_{OUT} \leq +2V$	300			Ω

Note 2) The output short current is specified by 1 output terminal. If plural outputs short at once, the NJU6413A may destroy due to the power over the package power dissipation.

DRIVER AC CHARACTERISTICS

 (Ta=25°C, 4.5 ≤ V_{CC} ≤ 5.5V, I_{LV}⁺=I_{LV}⁻=0mA, GND=0V, R_L=3kΩ, C_L=50pF) (Note 3, 4)

PARAMETER	SYMBOL	CONDITIONS	MIN	TYP	MAX	UNIT
Propagation Delay Time	t _{pdI}				5.0	μs
	t _{pdO}				5.0	
Output Rise/Fall Time (Note 5)	t _r		0.2			μs
	t _f		0.2			
Delay Time Skew	t _{sk}			400		ns
Slew Rate (Note 5)	S _R	R _L =3 to 7kΩ, 15pF ≤ C _L ≤ 2.5nF		6	30	v/μs

 Note 3) AC input waveform: t_r, t_f ≤ 20ns, V_{IH}=2.0V, V_{IL}=0.8V

Note 4) Input Rise/Fall time are less than 5μs.

Note 5) Output slew rate, output rise time and fall time are specified output waveform changing time either from +3V to -3V or -3V to +3V.

RECEIVER ELECTRICAL CHARACTERISTICS

 (Ta=25°C, 4.5 ≤ V_{CC} ≤ 5.5V, I_{LV}⁺=I_{LV}⁻=0mA, GND=0V)

PARAMETER	SYMBOL	CONDITIONS	MIN	TYP	MAX	UNIT
Input Voltage	H Level	V _P	1.3	2.0	2.5	V
	L Level	V _N	0.5	1.0	1.7	
Hysteresis Voltage	V _H			1.0		V
Input Impedance	R _{IN}	V _{IN} =±3V~±12V	3	5	7	kΩ
Output Voltage	H Level	V _{OH}	V _{IN} =V _N (Min.), I _{OUT} =-3.2mA	2.8		V
	L Level	V _{OL}	V _{IN} =V _P (Max.), I _{OUT} =+3.2mA		0.4	

RECEIVER AC CHARACTERISTICS

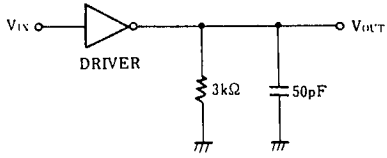
 (Ta=25°C, 4.5 ≤ V_{CC} ≤ 5.5V, I_{LV}⁺=I_{LV}⁻=0mA, GND=0V, C_L=50pF) (Note 6)

PARAMETER	SYMBOL	CONDITIONS	MIN	TYP	MAX	UNIT
Propagation Delay Time	t _{PLH}	Input Pulse Width ≥ 10μs			6.5	μs
	t _{PHL}				6.5	
Delay Time Skew	t _{SK}			400		ns
Output Rise Time	t _r				300	ns
Output Fall Time	t _f				300	ns

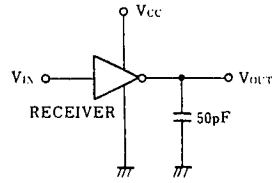
 Note 6) AC input waveform tr=tf=200ns, V_{IH}=+3V, V_{IL}=-3V, f=20kHz.

■ MEASUREMENT CIRCUITS

(1) Driver AC Characteristics

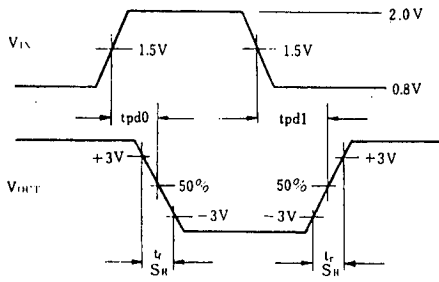


(2) Receiver AC Characteristics

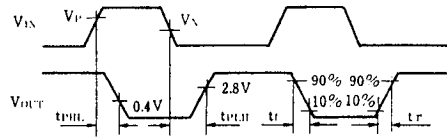


■ MEASUREMENT WAVEFORMS

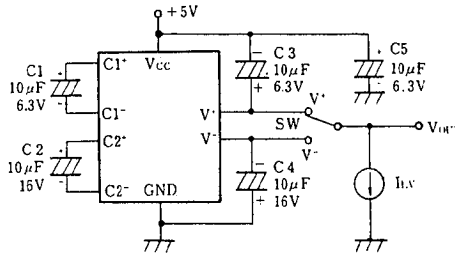
(1) Driver AC Characteristics



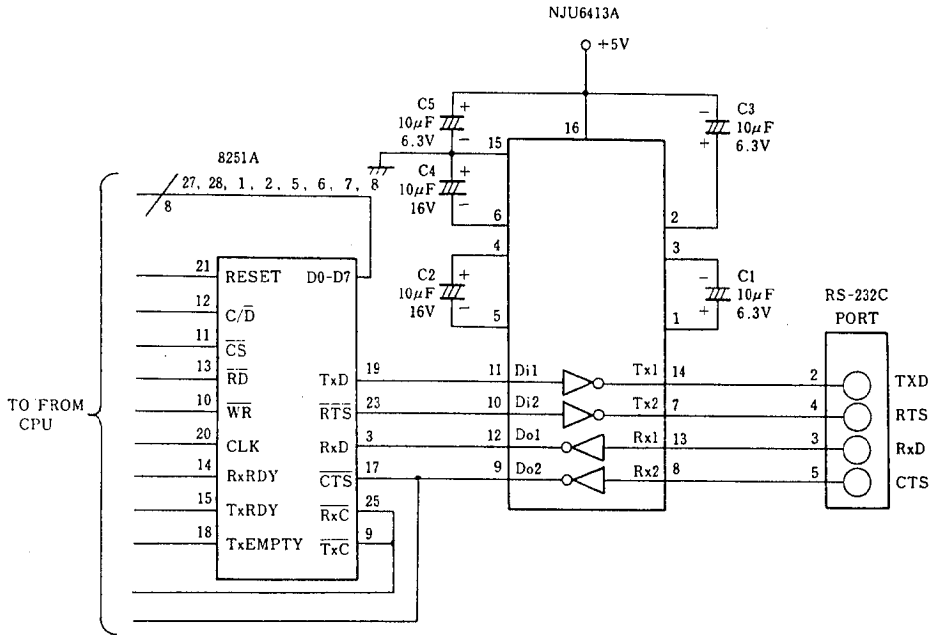
(2) Receiver AC Characteristics



■ DC/DC CONVERTER OUTPUT VOLTAGE MEASUREMENT CIRCUITS



■ APPLICATION CIRCUIT



RS-232C port

* For keeping the high power conversion rate, short wiring for C₁ to C₄ required.

MEMO

[CAUTION]

The specifications on this databook are only given for information, without any guarantee as regards either mistakes or omissions. The application circuits in this databook are described only to show representative usages of the product and not intended for the guarantee or permission of any right including the industrial rights.

SUNSTAR 商斯达实业集团是集研发、生产、工程、销售、代理经销、技术咨询、信息服务等为一体的高科技企业，是专业高科技电子产品生产厂家，是具有 10 多年历史的专业电子元器件供应商，是中国最早和最大的仓储式连锁规模经营大型综合电子零部件代理分销商之一，是一家专业代理和分销世界各大品牌 IC 芯片和电子元器件的连锁经营综合性国际公司，专业经营进口、国产名厂名牌电子元件，型号、种类齐全。在香港、北京、深圳、上海、西安、成都等全国主要电子市场设有直属分公司和产品展示展销窗口门市部专卖店及代理分销商，已在全国范围内建成强大统一的供货和代理分销网络。我们专业代理经销、开发生产电子元器件、集成电路、传感器、微波光电元器件、工控机/DOC/DOM 电子盘、专用电路、单片机开发、MCU/DSP/ARM/FPGA 软件硬件、二极管、三极管、模块等，是您可靠的一站式现货配套供应商、方案提供商、部件功能模块开发配套商。商斯达实业公司拥有庞大的资料库，有数位毕业于著名高校——有中国电子工业摇篮之称的西安电子科技大学（西军电）并长期从事国防尖端科技研究的高级工程师为您精挑细选、量身订做各种高科技电子元器件，并解决各种技术问题。

微波光电部专业代理经销高频、微波、光纤、光电元器件、组件、部件、模块、整机；电磁兼容元器件、材料、设备；微波 CAD、EDA 软件、开发测试仿真工具；微波、光纤仪器仪表。欢迎国外高科技微波、光纤厂商将优秀产品介绍到中国、共同开拓市场。长期大量现货专业批发高频、微波、卫星、光纤、电视、CATV 器件：晶振、VCO、连接器、PIN 开关、变容二极管、开关二极管、低噪晶体管、功率电阻及电容、放大器、功率管、MMIC、混频器、耦合器、功分器、振荡器、合成器、衰减器、滤波器、隔离器、环行器、移相器、调制解调器；光电子元件和组件：红外发射管、红外接收管、光电开关、光敏管、发光二极管和发光二极管组件、半导体激光二极管和激光器组件、光电探测器和光接收组件、光发射接收模块、光纤激光器和光放大器、光调制器、光开关、DWDM 用光发射和接收器件、用户接入系统光收发器件与模块、光纤连接器、光纤跳线/尾纤、光衰减器、光纤适配器、光隔离器、光耦合器、光环行器、光复用器/转换器；无线收发芯片和模组、蓝牙芯片和模组。

更多产品请看本公司产品专用销售网站：

商斯达中国传感器科技信息网：<http://www.sensor-ic.com/>

商斯达工控安防网：<http://www.pc-ps.net/>

商斯达电子元器件网：<http://www.sunstare.com/>

商斯达微波光电产品网：[HTTP://www.rfoe.net/](http://www.rfoe.net/)

商斯达消费电子产品网：<http://www.icasic.com/>

商斯达实业科技产品网：<http://www.sunstars.cn/> 微波元器件销售热线：

地址：深圳市福田区福华路福庆街鸿图大厦 1602 室

电话：0755-82884100 83397033 83396822 83398585

传真：0755-83376182 (0) 13823648918 MSN: SUNS8888@hotmail.com

邮编：518033 E-mail:szss20@163.com QQ: 195847376

深圳赛格展销部：深圳华强北路赛格电子市场 2583 号 电话：0755-83665529 25059422

技术支持：0755-83394033 13501568376

欢迎索取免费详细资料、设计指南和光盘；产品凡多，未能尽录，欢迎来电查询。

北京分公司：北京海淀区知春路 132 号中发电子大厦 3097 号

TEL: 010-81159046 82615020 13501189838 FAX: 010-62543996

上海分公司：上海市北京东路 668 号上海赛格电子市场 D125 号

TEL: 021-28311762 56703037 13701955389 FAX: 021-56703037

西安分公司：西安高新开发区 20 所(中国电子科技集团导航技术研究所)

西安劳动南路 88 号电子商城二楼 D23 号

TEL: 029-81022619 13072977981 FAX:029-88789382