

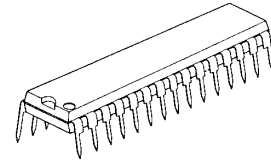
SRS 3D Stereo & SRS HEADPHONE AUDIO PROCESSOR

■GENERAL DISCRIPTION

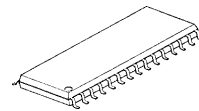
The **NJM2191** is a SRS 3D Stereo and SRS HEADPHONE audio processor. The 3D Stereo regenerates 3D surround sound with only two speakers, and also the SRS HEADPHONE provides a realistic and spacious listening experience through standard headphones.

The **NJM2191** is suitable for mini component, CD radio cassette, multimedia speaker system for PC and others.

■PACKAGE OUTLINE



NJM2191L



NJM2191M

■FEATURES

- | | |
|--|---|
| ● Operating Voltage | 4.7 to 13V |
| ● Low Operating Current | 10.0 mA typ. at 3D Stereo Mode
11.0mA typ. at SRS HP Mode |
| ● Low Output Noise | 17.8 μ Vrms typ.at 3D Stereo Mode
17.8 μ Vrms typ at SRS HP Mode |
| ● Bypass Gain | 0dB typ. |
| ● Sound Field Adjustment by Width Volume | |
| ● Internal Mode Switch | 3D Stereo / SRS HP |
| ● Bipolar Technology | |
| ● Package Outline | SDIP30, SDMP30 |

The SRS 3D Stereo and HEDPHONE technology right incorporated in the NJM2191 are owned by SRS Labs, a U.S. Corporation and licensed to New Japan Radio Co., Ltd. SRS 3D Stereo and HEDPHONE is protected under U.S. and foreign patents issued and/or pending. SRS 3D Stereo and HEDPHONE and the , are trademarks of SRS Labs, Inc. in the United States and selected foreign countries. Neither the purchase of the NJM2191, nor the corresponding sale of audio enhancement equipment conveys the right to sell commercialized recordings made with any SRS technology.

SRS Labs requires that all users of the NJM2191 must enter into a license agreement directly with SRS Labs if the royalty is not included in the purchase price. SRS Labs also requires any users to comply with all rules and regulations as outlined in the SRS Trademark Usage Manual.

For further information, please contact:

SRS Labs, Inc.
2909 Daimler Street. Santa Ana, CA 92705 USA
Tel: 949-442-1070 Fax:949-852-1099 <http://www.srslabs.com>

NJM2191

■ABSOLUTE MAXIMUM (Ta=25°C)

PARAMETER	SYMBOL	RATINGS	UNIT
Operating Voltage	V ⁺	15	V
Power Dissipation	P _D	700	mW
Operating Temperature Range	T _{OPR}	-40 to +85	°C
Storage Temperature Range	T _{stg}	-40 to +125	°C

■ELECTRICAL CHARACTERISTICS (V⁺=12V, Ta=25°C, V_{IN}=-10dBV(316mVrms), unless otherwise specification)

PARAMETER	SYMBOL	CONDITION	CONDITION				MIN	TYP	MAX	UNIT	
			INPUT		OUTPUT	MODE					WIDTH VR
			L	R							
Operating Voltage	V ⁺	-	-	-	-	-	4.7	12.0	13.0	V	
Operating Current	I _{CC}	No Signal	0	0	-	BYPASS	-	5.0	9.0	13.0	mA
			0	0	-	3D Stereo	MAX	6.0	10.0	14.0	
			0	0	-	SRS HP	MAX	7.0	11.0	15.0	
			0	0	-	3D Stereo SRS HP	MAX	8.0	12.0	16.0	
Reference Voltage	V _{REF}	V ⁺ /2	0	0	-	-	5.8	6.0	6.2	V	
Maximum Input Voltage	V _{IM}	f=1kHz T.H.D.=3%	V _{IN} -	- V _{IN}	L R	BYPASS 3D Stereo	-	11.0 (3.5)	12.0 (4.0)	-	dBV (Vrms)
		f=1kHz T.H.D.=3%	V _{IN} -	- V _{IN}	L R	BYPASS SRS HP	-	11.0 (3.5)	12.0 (4.0)	-	
		f=125kHz T.H.D.=3%	V _{IN} V _{IN}	- -	L R	3D Stereo	MAX	-1.3 (0.9)	0.7 (1.1)	-	
		f=125kHz T.H.D.=3%	V _{IN}	V _{IN}	L	3D Stereo	MAX	10.0 (3.2)	12.0 (4.0)	-	
		f=125kHz T.H.D.=3%	V _{IN}	-V _{IN}	L	3D Stereo	MAX	-7.1 (0.4)	-5.1 (0.6)	-	
		f=100Hz T.H.D.=3%	V _{IN} V _{IN}	- -	L R	SRS HP	MAX	-6.1 (0.5)	-4.1 (0.6)	-	
		f=100Hz T.H.D.=3%	V _{IN}	V _{IN}	L	SRS HP	MAX	9.9 (3.1)	11.9 (3.9)	-	
		f=100Hz T.H.D.=3%	V _{IN}	-V _{IN}	L	SRS HP	MAX	-12.1 (0.2)	-10.1 (0.3)	-	

■ ELECTRICAL CHARACTERISTICS ($V^+=12V$, $T_a=25^\circ C$, $V_{IN}=-10dBV(316mV_{rms})$, unless otherwise specification)

PARAMETER	SYMBOL		CONDITION					MIN	TYP	MAX	UNIT
			INPUT		OUTPUT	MODE	WIDTH VR				
			L	R							
Output Noise	V_{NOISE}	Rg=0Ω A-Weighted	0	0	L R	BYPASS 3D Stereo	-	-	-110 (3.2)	-100 (10.0)	dBV (uVrms)
			0	0	L R	3D Stereo	MAX	-	-95 (17.8)	-84 (63.1)	
			0	0	L R	BYPASS SRS HP	-	-	-110 (3.16)	-100 (10.0)	
			0	0	L R	SRS HP	MIN	-	-95 (17.8)	-84 (63.1)	
			0	0	L R	SRS HP	MAX	-	-95 (17.8)	-84 (63.1)	
Total Harmonic Distortion	THD	f=1kHz	V_{IN}	-	L R	BYPASS 3D Stereo	-	-	0.01	0.05	%
			-	V_{IN}	L R	3D Stereo	MAX	-	0.10	0.20	
			-	V_{IN}	R	3D Stereo	MAX	-	0.10	0.20	
			V_{IN}	-	L R	BYPASS SRS HP	-	-	0.01	0.05	
			-	V_{IN}	L R	SRS HP	MIN	-	0.10	0.30	
			V_{IN}	-	L R	SRS HP	MAX	-	0.01	0.10	
			-	V_{IN}	R	SRS HP	MAX	-	0.20	0.40	
Bypass Gain	G_{VBYP}	f=1kHz	V_{IN}	-	L R	BYPASS 3D Stereo	-	-1.0	0.0	1.0	dB
			-	V_{IN}	L R	BYPASS SRS HP	-	-1.0	0.0	1.0	
3D Stereo Gain	G_{VSRS}	f=125Hz	V_{IN}	-	L R	3D Stereo	MAX	9.2	11.2	13.2	dB
			-	V_{IN}	L R	3D Stereo	MIN	-2.5	-0.5	1.5	
			-	V_{IN}	L R	3D Stereo	MAX	6.5	8.5	10.5	
L+R Gain	G_{L+R}	$V_{in}=-20dBV$ f=100Hz	V_{IN}	V_{IN}	L R	SRS HP	MIN	-2.0	0.0	2.0	dB
			V_{IN}	V_{IN}	L R	SRS HP	MAX	-2.0	0.0	2.0	
L-R Gain	G_{L-R}	$V_{in}=-20dBV$ f=100Hz	V_{IN}	$-V_{IN}$	L R	SRS HP	MIN	3.3	5.3	7.3	dB
			V_{IN}	$-V_{IN}$	L R	SRS HP	MAX	18.9	20.9	22.9	
Mode Select Control Switch	V_{MODE}	V_{IN} = "High Level"	-	-	-	-	-	2.0	-	V^+	V
		V_{IN} = "Low Level"	-	-	-	-	-	0.0	-	0.7	

✓ The word " $-V_{IN}$ " signifies opposite phase of " V_{IN} "

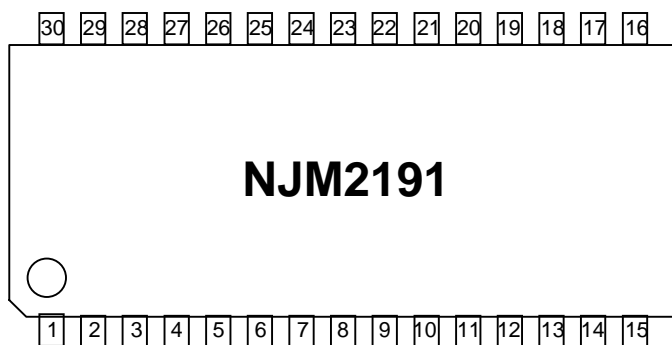
NJM2191

MODE SWITCH

	3D Stereo SW
BYPASS	Low Level
3D Stereo	High Level

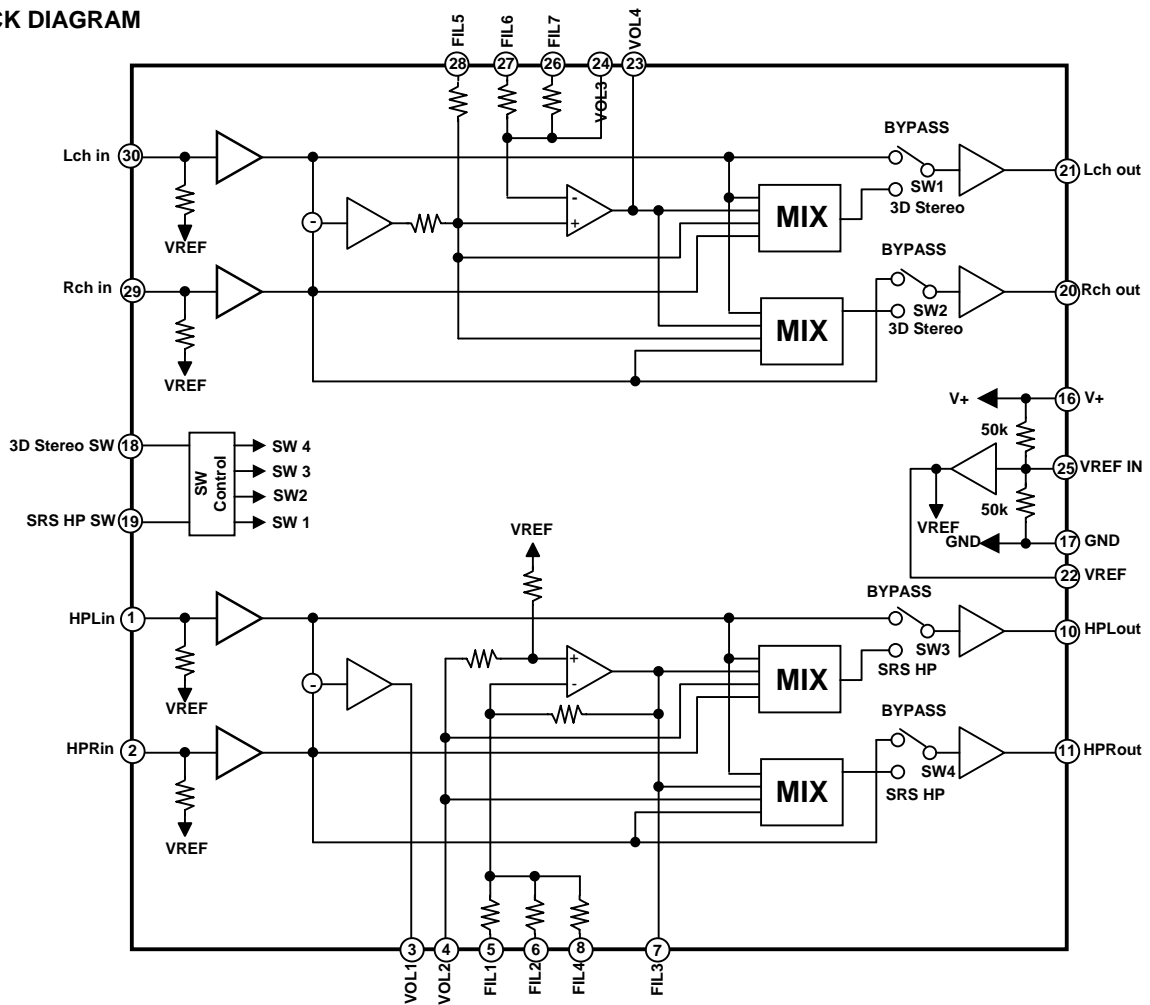
	SRS-HP SW
BYPASS	Low Level
SRS HP	High Level

PIN CONFIGURATION

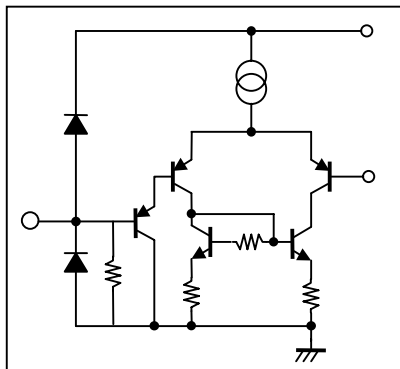


No	SYMBOL	FUNCTION	No.	SYMBOL	FUNCTION
1	HPLin	Lch Input for SRS HP	16	V+	4.7 to 13V
2	HPRin	Rch Input for SRS HP	17	GND	GROUND
3	VOL1	Width Control Output for SRS HP	18	3D Stereo SW	3D Stereo Mode Switch
4	VOL2	Width Control Input for SRS HP	19	SRS HP SW	SRS HP Mode Switch
5	FIL1	Filter1	20	Rch out	Rch Output
6	FIL2	Filter2	21	Lch out	Lch Output
7	FIL3	Filter3	22	VREFOUT	Reference Voltage Input
8	FIL4	Filter4	23	VOL4	Width Control Input for SRS Stereo
9	NC	NC	24	VOL3	Width Control Output for SRS Stereo
10	HPLout	Lch Output for SRS HP	25	VREFIN	Reference Voltage Output
11	HPRout	Rch Output for SRS HP	26	FIL7	Filter6
12	NC	NC	27	FIL6	Filter7
13	NC	NC	28	FIL5	Filter8
14	NC	NC	29	Rch in	Rch Input
15	NC	NC	30	Lch in	Lch Input

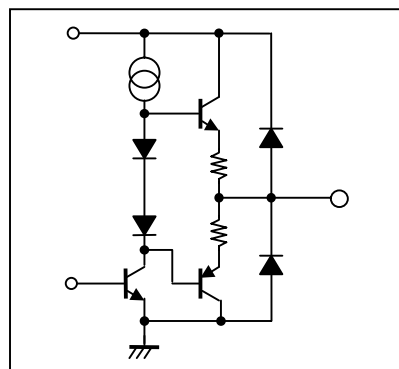
■ BLOCK DIAGRAM



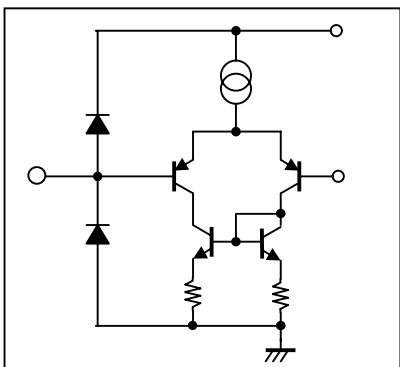
■ PIN DESCRIPTION



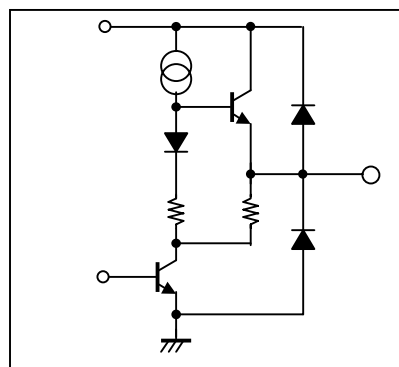
PIN No.
18,19



PIN No.
10,11,20,21,22,23



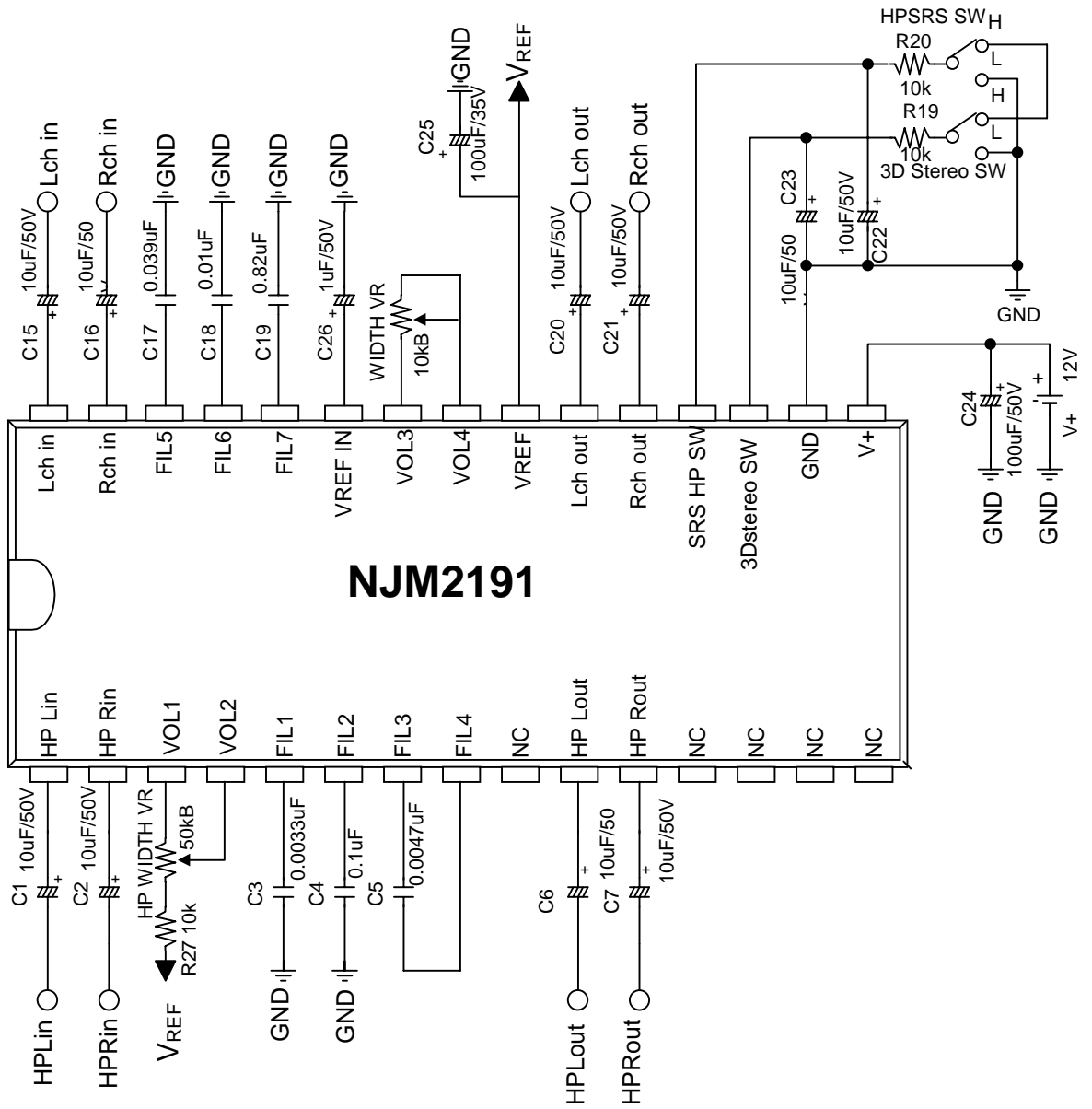
PIN No.
1,2,4,5,6,8,9,24,
25,26,27,28,29,30



PIN No.
3,7

NJM2191

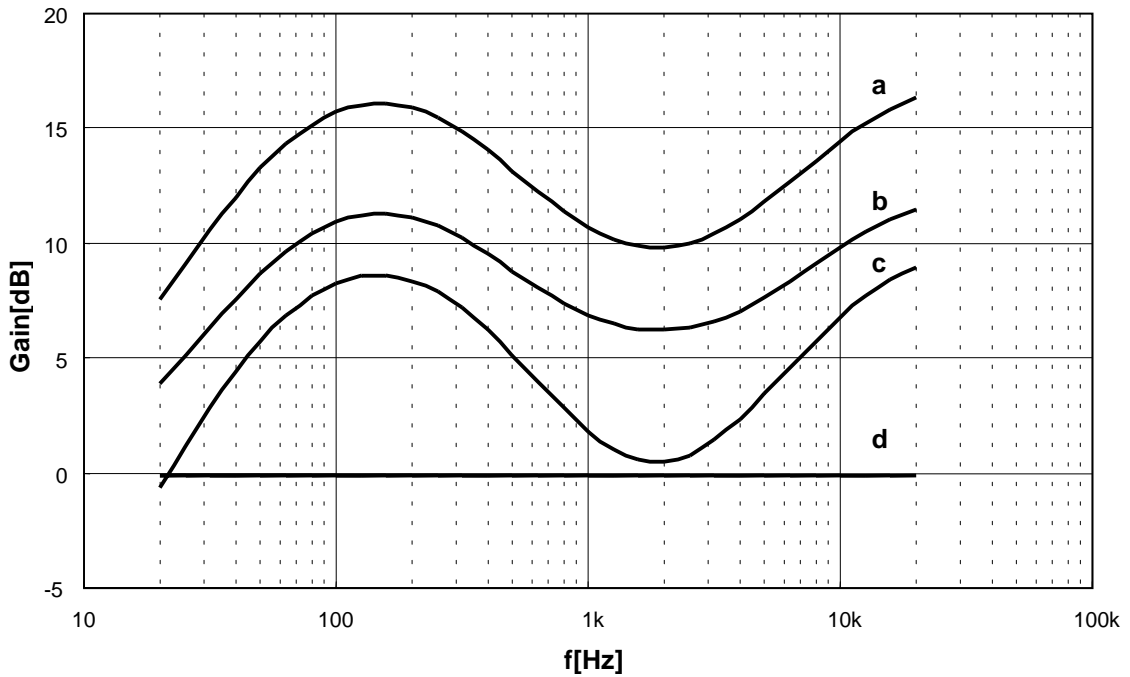
APPLICATION CIRCUIT



TYPICAL CHARACTERISTICS

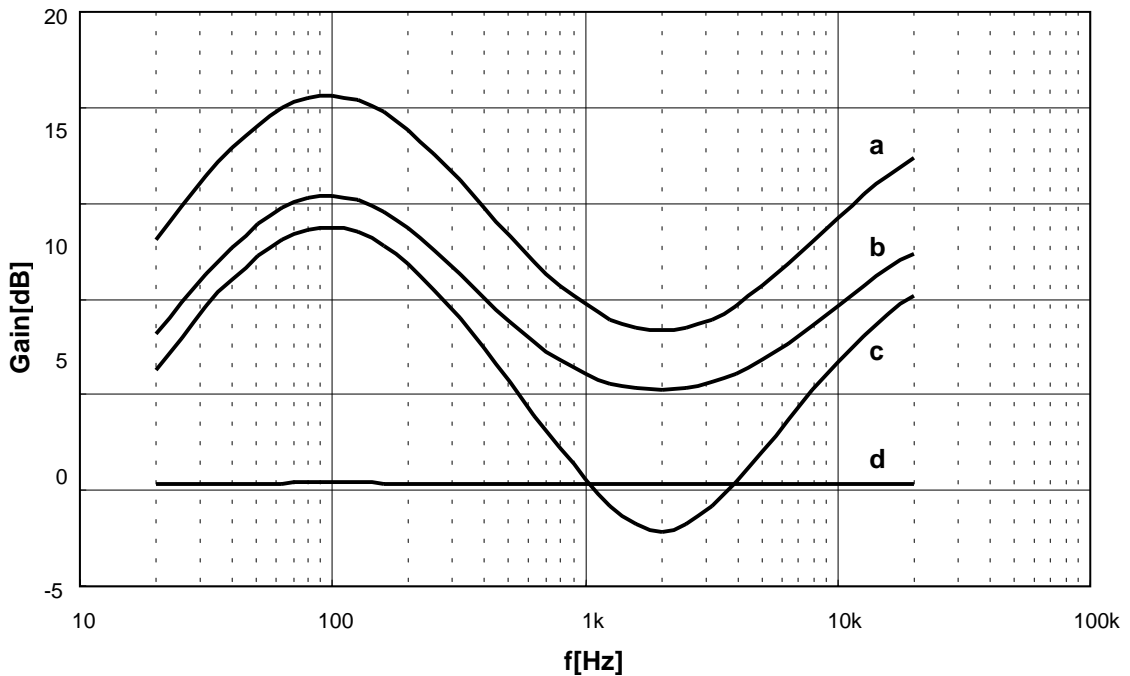
“SRS 3D Stereo GAIN STRUCTURE”

V+=12V, Ta=25°C, Vin=-10dBV, Width VR=Max



“SRS HEADPHONE GAIN STRUCTURE”

V+=12V, Ta=25°C, Vin=-20dBV, Width VR=Max



No.	INPUT	OUTPUT
a	Lch - Rch	Lch
b	Lch	Lch
c	Rch	Lch
d	Lch + Rch	Lch

[CAUTION]
 The specifications on this data book are only given for information, without any guarantee as regards either mistakes or omissions. The application circuits in this data book are described only to show representative usages of the product and not intended for the guarantee or permission of any right including the industrial rights.

SUNSTAR 商斯达实业集团是集研发、生产、工程、销售、代理经销、技术咨询、信息服务等为一体的高科技企业，是专业高科技电子产品生产厂家，是具有 10 多年历史的专业电子元器件供应商，是中国最早和最大的仓储式连锁规模经营大型综合电子零部件代理分销商之一，是一家专业代理和分销世界各大品牌 IC 芯片和电子元器件的连锁经营综合性国际公司，专业经营进口、国产名厂名牌电子元件，型号、种类齐全。在香港、北京、深圳、上海、西安、成都等全国主要电子市场设有直属分公司和产品展示展销窗口门市部专卖店及代理分销商，已在全国范围内建成强大统一的供货和代理分销网络。我们专业代理经销、开发生产电子元器件、集成电路、传感器、微波光电元器件、工控机/DOC/DOM 电子盘、专用电路、单片机开发、MCU/DSP/ARM/FPGA 软件硬件、二极管、三极管、模块等，是您可靠的一站式现货配套供应商、方案提供商、部件功能模块开发配套商。商斯达实业公司拥有庞大的资料库，有数位毕业于著名高校——有中国电子工业摇篮之称的西安电子科技大学（西军电）并长期从事国防尖端科技研究的高级工程师为您精挑细选、量身订做各种高科技电子元器件，并解决各种技术问题。

微波光电部专业代理经销高频、微波、光纤、光电元器件、组件、部件、模块、整机；电磁兼容元器件、材料、设备；微波 CAD、EDA 软件、开发测试仿真工具；微波、光纤仪器仪表。欢迎国外高科技微波、光纤厂商将优秀产品介绍到中国、共同开拓市场。长期大量现货专业批发高频、微波、卫星、光纤、电视、CATV 器件：晶振、VCO、连接器、PIN 开关、变容二极管、开关二极管、低噪晶体管、功率电阻及电容、放大器、功率管、MMIC、混频器、耦合器、功分器、振荡器、合成器、衰减器、滤波器、隔离器、环行器、移相器、调制解调器；光电子元件和组件：红外发射管、红外接收管、光电开关、光敏管、发光二极管和发光二极管组件、半导体激光二极管和激光器组件、光电探测器和光接收组件、光发射接收模块、光纤激光器和光放大器、光调制器、光开关、DWDM 用光发射和接收器件、用户接入系统光收发器件与模块、光纤连接器、光纤跳线/尾纤、光衰减器、光纤适配器、光隔离器、光耦合器、光环行器、光复用器/转换器；无线收发芯片和模组、蓝牙芯片和模组。

更多产品请看本公司产品专用销售网站：

商斯达中国传感器科技信息网：<http://www.sensor-ic.com/>

商斯达工控安防网：<http://www.pc-ps.net/>

商斯达电子元器件网：<http://www.sunstare.com/>

商斯达微波光电产品网：[HTTP://www.rfoe.net/](http://www.rfoe.net/)

商斯达消费电子产品网：<http://www.icasic.com/>

商斯达实业科技产品网：<http://www.sunstars.cn/> 微波元器件销售热线：

地址：深圳市福田区福华路福庆街鸿图大厦 1602 室

电话：0755-82884100 83397033 83396822 83398585

传真：0755-83376182 (0) 13823648918 MSN: SUNS8888@hotmail.com

邮编：518033 E-mail:szss20@163.com QQ: 195847376

深圳赛格展销部：深圳华强北路赛格电子市场 2583 号 电话：0755-83665529 25059422

技术支持：0755-83394033 13501568376

欢迎索取免费详细资料、设计指南和光盘；产品凡多，未能尽录，欢迎来电查询。

北京分公司：北京海淀区知春路 132 号中发电子大厦 3097 号

TEL: 010-81159046 82615020 13501189838 FAX: 010-62543996

上海分公司：上海市北京东路 668 号上海赛格电子市场 D125 号

TEL: 021-28311762 56703037 13701955389 FAX: 021-56703037

西安分公司：西安高新开发区 20 所(中国电子科技集团导航技术研究所)

西安劳动南路 88 号电子商城二楼 D23 号

TEL: 029-81022619 13072977981 FAX:029-88789382