



Common-Mode Noise: Sources and Solutions

Application Note 1043

Introduction

Circuit designers often encounter the adverse effects of common-mode noise on a design. Once a common-mode problem is identified, there are several ways that it can be resolved. However, common-mode interference manifests itself in many ways; therefore, it may be hard to determine whether or not this is the cause of your circuit's misbehavior. If a system is connected and running but only produces erroneous data, common-mode noise may be the reason. This application note describes sources of common-mode problems, presents possible solutions, and concludes with a description of Agilent Technologies approach to addressing common-mode noise.

Common-mode noise problems exist in many electrical circuits. Any device or system with either its input or its output floating may be susceptible to common-mode noise. A common-mode signal is a signal that appears common to either set of floating points. It can be either ac or dc. The overall effect is that excessive common-mode noise causes spurious

results at the output, disrupting safe, precise measurements.

Common-mode interference is sometimes inherent in a system design, but most often it is inductively or capacitively coupled from an external source. A good example of common-mode noise is the 60-Hz signal induced on a pair of wires by nearby power lines. In this case, the noise signal is "common" to each of the two wires. An inherent common-mode signal is one in which the circuit itself causes the interference. An example of this is the half bridge power inverter. In such an application, the driver circuits of the power transistors rise and fall hundreds of volts with respect to signal ground in only tens of nanoseconds.

Definition of CMR

Common-mode rejection (CMR) is a measure of the ability of a device to tolerate common-mode noise. It can be specified in several ways. The common-mode specification is sometimes given as CMV, or common-mode voltage. This value specifies the maximum common-mode voltage amplitude that can be applied to

the device without causing a problem. The CMR of analog devices is commonly specified in dB as the ratio of the differential-mode gain to the common-mode gain. This specification is often called the common-mode rejection ratio, or CMRR. Another way to specify CMR is as a common-mode transient rejection (CMTR). CMTR describes the maximum tolerable rate-of-rise (or fall) of a common-mode voltage. It is usually given in volts per microsecond. In order to be complete, the CMTR should also include the amplitude of the common-mode voltage that can be tolerated. Common-mode interference that exceeds the maximum specification might result in abnormal voltage transitions or excessive noise on the output signal.

Sources of CMR Problems

Common-mode signals can originate from several different sources. A full-bridge power inverter, shown in Figure 1, is a good example of an application that can exhibit large amounts of common-mode noise. Full bridge inverters are commonly found in motor-speed control and

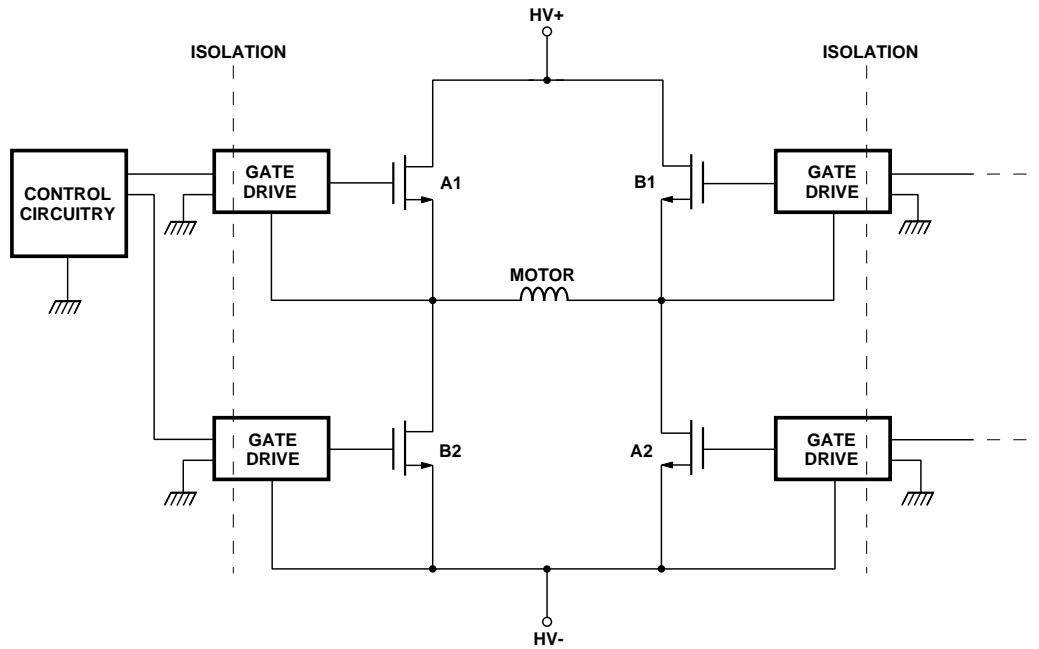


Figure 1. Full-Bridge Power Switch Configuration.

switching power supply applications. The power inverter is generally used to produce an ac output from a dc input. In a full-bridge inverter application like that shown in Figure 1, the source of one set of transistors (A1, B1) is attached to the drain of a second set of transistors (A2, B2). When transistor set A turns on, set B turns off. Current flows from the positive supply, through transistor A1, through the load, and through transistor A2. When set B turns on, set A turns off, and the polarity of the current through the inductive load is reversed.

How does this operation create a common-mode problem? The input of each gate drive circuitry is referenced to the ground of the digital control circuitry; the output common, on the other hand, is floating and referenced to the source of its associated power transistor. The floating common of the gate drive circuitry rapidly switches between the positive and negative power supplies. This

rapid switching creates a large voltage swing across the input to output of the gate drive circuitry. As an example, a half bridge circuit that switches between +250 V and -250 V in 100 ns creates a common-mode transient

signal of 5000 V/μs with an amplitude of 500 V (see Figure 2). The device that carries the control information to each MOSFET must be able to withstand this level of common-mode interference. Although this example may seem

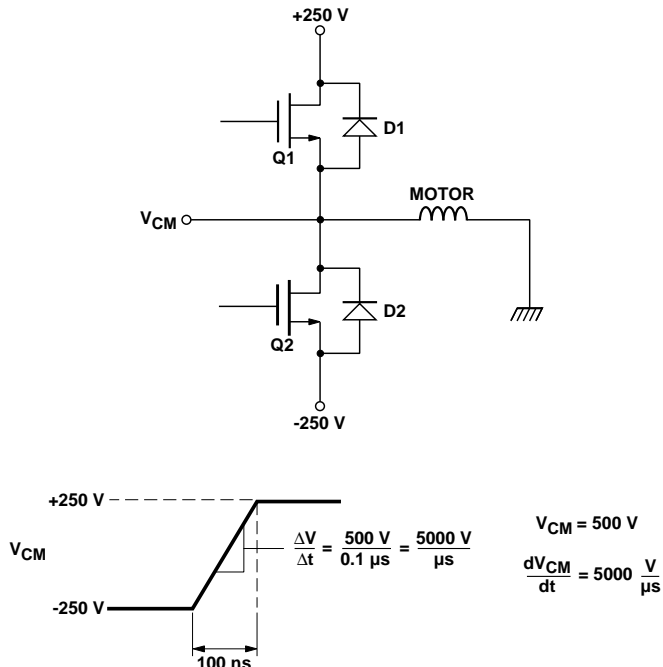


Figure 2. Half-Bridge Example.

extreme, it is a fact that engineers continue to use faster switching transistors to increase efficiency. Power MOSFETs, for example, are commonly used in power inverter applications because they are capable of high frequency, high power switching. The fast switching speeds of the transistors, however, can generate common-mode signals with very high rates of change (dV_{cm}/dt).

The common-mode signal rate-of-rise can also be affected by the reverse recovery characteristics of diodes D1 and D2 in the power inverter shown in Figure 2; these diodes are often referred to as “free-wheeling” diodes. If the inverter is driving an inductive load, such as a motor winding, these diodes may become forward biased during the normal operation of the inverter. For example, assume that Q1 of Figure 2 is turned on, Q2 is off, and current is flowing through Q1 and into the inductive load. When Q1 turns off, voltage V_{cm} swings in the negative direction until diode D2 becomes forward biased and conducts the load current.

It is when Q1 turns back on that very high rates of rise can be generated. In extreme cases, when Q1 turns on again, the rate of rise of voltage V_{cm} is determined by how quickly diode D2 recovers from forward conduction. The voltage and current waveforms shown in Figure 3 illustrate what happens when Q1 turns back on. As Q1 starts to turn on, the current through D2 begins to decrease. The current through D2 continues to decrease and actually goes negative for a short time due to the storage of minority carrier charge in its junction. It is when

this charge has been depleted that D2 begins to turn off and V_{cm} begins to increase. If D2 turns off very quickly, V_{cm} can also rise very quickly, generating a large common-mode transient signal.

High electrical noise levels can also contribute to common-mode problems. A significant amount of electrical noise is found in industrial environments as a result of the starting and operating of electric motors. When a large motor first turns on, it normally requires a large inrush current to reach operating speed. This large current spike can generate a significant amount of electrical noise in its own and nearby systems. Even the electric motors in a typical household environment vary in size from fractional to low integral horsepower units and are often noisy ac-operated or brushed dc-motors. Other sources of electrical noise include microwave ovens, welding equipment, and automobile ignitions.

Common-mode noise can enter a system through conductive, inductive, or capacitive coupling.

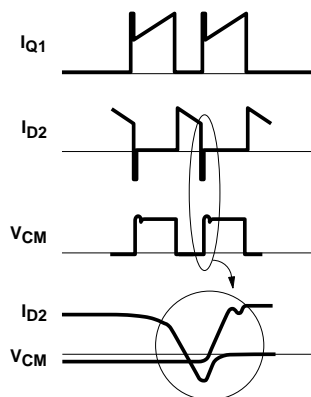


Figure 3. Half-Bridge Inverter Waveforms.

An example of a “conducted” noise voltage is the difference in ground potential that may exist between two connected systems in a plant. The two systems may experience a small voltage difference between their ground references. This voltage difference might cause a ground-loop current to flow. If the impedance of the path through which the ground-loop current flows is large enough, a significant amount of interference will result. Capacitive or inductive coupling may occur when signal wires run close to ac power cables. Electromagnetically induced interference (EMI) can also be coupled from adjacent signal lines or nearby equipment, especially in factory environments. Other sources of common-mode noise that can be coupled into a system include lightning strikes and electro-static discharge (ESD).

Solutions

There are a number of ways to limit the amount of common-mode noise entering a system. Employing good design techniques is one way to obtain better common-mode rejection. For example, a designer should carefully lay out his board to ensure that signal lines do not run adjacent to power lines. This minimizes the amount of 60-Hz noise coupled onto the signal lines. Generous use of bypass capacitors and filters helps to reduce the effect of common-mode voltages coupled onto the power supply lines. An engineer might also design a completely differential circuit, taking advantage of the inherent common-mode rejection of differential circuitry. Ideally, both inputs to the differential circuit should be referenced to the same

point. Otherwise, a small potential between the two reference points will add directly to the differential signal and may cause problems. Especially in high-frequency circuits, the positive and negative lines should run parallel and have the same length. This ensures that the two lines have the same impedance and balanced common-mode coupling.

Capacitive isolation is an effective and inexpensive way to eliminate dc common-mode signals. The most common application for capacitive isolation is in interstage coupling. For example, multi-stage amplifiers are often ac coupled. Coupling capacitors are useful for removing dc common mode voltages but do not block ac common-mode interference. Because capacitors block dc voltages, this technique cannot be used in applications for which dc signals must be transferred.

Twisted-pair wire, when used with a differential line receiver, can help to reduce the effects of common-mode noise by balancing the common-mode coupling of both electric and magnetic effects. However, if an interfering common-mode signal is not coupled equally to both lines, the net unbalance will appear as a differential-mode signal. Another problem may result if the impedances measured to ground of the two lines differ; a fraction of the common-mode signal at the end of the twisted-pair line will appear differential and interfere with the desired signal, as illustrated in Figure 4. A typical application involves the use of twisted-pair wire with an RS-422 differential line receiver. An advantage of the differential line

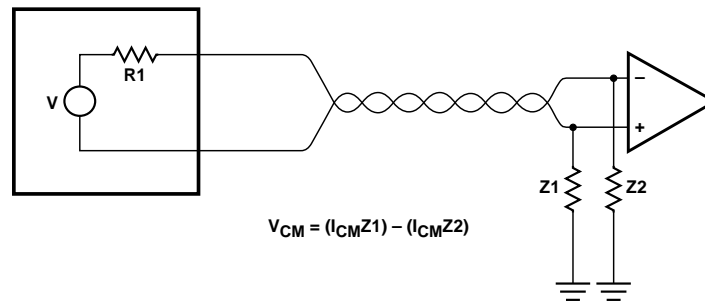


Figure 4. Twisted Pair Line.

receiver is its fast response. Also, a differential line receiver can pass both ac and dc signals. Disadvantages of line receivers are that they do not provide isolation between input and output and can tolerate only a limited range of common-mode voltages. For example, a typical RS-422 receiver can tolerate common-mode voltages of +15 V. Shielding a twisted-pair wire will provide better common mode rejection because the shield provides additional protection from electric and magnetic interference.

Transformers also provide common-mode rejection. They are often used in power applications and frequently in data communication applications such as Ethernet. An advantage of the transformer is that it provides isolation. This means that the input and the output of a system are electrically separated, and common ground connections are broken. In general, the input and the output of a transformer are symmetrical, which means that data can be transmitted in either direction across the transformer. Also, a transformer does not require an isolated power supply to operate.

A disadvantage of the transformer is that although it can pass high-frequency signals with relative

ease, it cannot pass dc. Therefore, the transformer is not useful for data formats like Non-Return-to-Zero (NRZ) where the duty factor can range from zero up to 100 percent. With a transformer, NRZ data would require the use of more complex encoding and decoding circuitry, such as Manchester, which is used in Ethernet applications. In some applications, it may be difficult to obtain a usable waveform with the transformer. The transformer experiences a “sag” in the waveform which may cause problems with the design. Another difficulty with the transformer is that obtaining good common-mode rejection requires a balanced primary with symmetrical capacitances. Otherwise, a common-mode voltage injected into the center tap causes unbalanced voltages in the primary winding which, in turn, becomes a differential mode signal. A transformer with an electrostatic shield between its primary and secondary offers higher common-mode rejection than a transformer without a shield. The shield makes the transformer more expensive, but minimizes noise transferred across the windings. Other disadvantages of transformers are that they radiate and are susceptible to magnetic fields; they can be complex to design with; and they

may occupy a significant amount of space on the printed circuit board.

Optical isolation is another useful technique for reducing common-mode interference. Optocouplers, like transformers, provide isolation between the input and output of a system. Optocouplers use light for data transmission; therefore, they do not radiate nor are they affected by stray magnetic fields. Optocouplers typically provide better common-mode rejection than transformers because optocouplers do not have the high primary-to-secondary capacitance that transformers do. The CMR specification of an optocoupler ranges from 10 -1500 V amplitude and 50-30,000 V/ μ s rate of change, depending on the product. Another advantage of the optocoupler is that it can pass both ac and dc signals, eliminating the need for data conversion when transmitting NRZ data. Also, optocouplers are usually available in standard DIP or small-outline packages, so they require minimal board space. Disadvantages of the optocoupler are that it may require the use of an isolated power supply, and it can pass data only in a single direction.

High CMR Technology

An optocoupler consists of an input LED and an output photodetector in a single package. The photodetector can be either a phototransistor, a photodiode with a transistor, or a photodiode with an integrated logic circuit. Ideally, an optocoupler would have complete isolation between its input and its output. However, the physical proximity of the input

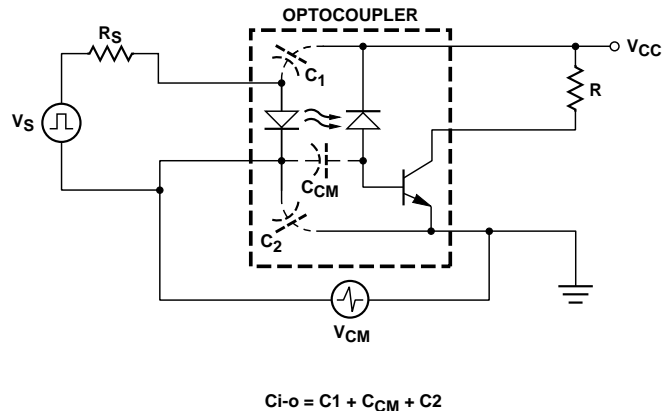


Figure 5. Input-to-Output Capacitance.

lead frame to the output lead frame creates a small capacitance between the two. This capacitance, known as C_{i-o} , is measured between shorted input pins and shorted output pins.

The most important factor in the common-mode interference capability of an optocoupler is the common-mode coupling capacitance, C_{cm} . C_{cm} , as shown in Figure 5, is only a fraction of the total input-to output capacitance C_{i-o} , but it is the main parameter that affects the common-mode capability of an optocoupler. Therefore, the smaller the value of C_{cm} , the better the common-mode rejection. As an example of how a common-mode signal can affect an output, Figure 6 shows a positive common-mode transient coupled through C_{cm} . This noise signal is amplified by the output gain stages, and tends to turn the output ON when it should be OFF. To enhance the common-mode rejection capability of its optocouplers, Agilent inserts an internal shield between the input LED and the photodiode of each device. The internal shield is a transparent conductive shield which allows optical coupling to

the photo diode but diverts electrically coupled current to the ground pin. The shield, as shown in Figure 7, reduces C_{cm} by at least an order of magnitude, improving the common-mode rejection of the optocoupler. A typical unshielded optocoupler might have a specified common mode rejection of 10 or 50 V peak and 1000 V/ μ sec rate of change. Using the electric shield technology, Agilent is able to produce high CMR optocouplers with CMR ratings up to 1500 V peak and 30,000 V/ μ sec rate of change (HCPL-4503).

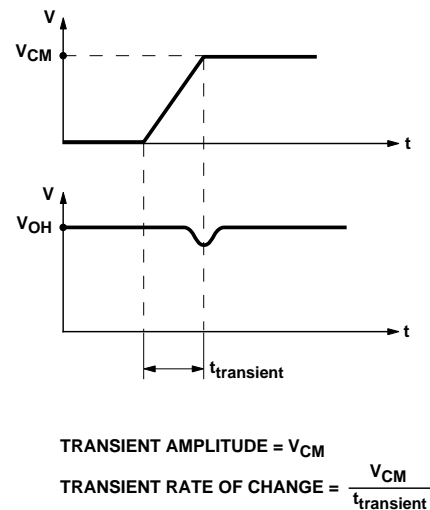


Figure 6. Common-Mode Interference Effect.

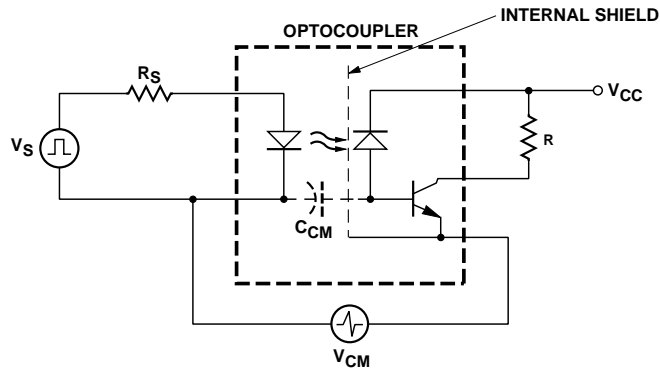


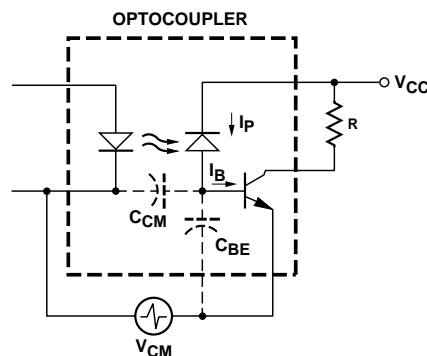
Figure 7. Enhanced Common-Mode Transient Immunity.

As shown in Figure 8, the interference by a common-mode signal can be explained in terms of a current and a voltage. A common-mode signal with a large dV_{cm}/dt produces an interfering signal, which is a current, I_b . This current, I_b , adds or subtracts from the photodiode current, I_p . A common-mode signal with a large amplitude (V_{cm}) produces an interfering signal which is a voltage, V_{be} . This voltage can turn on or turn off the base emitter junction of the transistor. The overall impact of a common-mode signal results from the combined effects of dV_{cm}/dt and V_{cm} . For this reason, it is important for an optocoupler to specify both the slope (dV_{cm}/dt) and the amplitude (V_{cm}) of a tolerable common-mode signal. A common-mode signal of $10\text{ kV}/\mu\text{s}$ at 1 kV , for example, is much worse than a common-mode signal of $10\text{ kV}/\mu\text{s}$ at 10 V .

Agilent specifies the CMR of its optocouplers as $|CM_H|$, Common Mode Transient Immunity at High Output Level, and as $|CM_L|$, Common Mode Transient Immunity at Low Output Level. CM_H is the maximum tolerable rate-of-rise of the common-mode voltage to ensure that the output

will remain in a high logic state. Likewise, CM_L is the maximum tolerable rate-of-fall of the common-mode voltage to ensure that the output will remain in a low logic state. Each CM_H and CM_L specification includes the common-mode voltage amplitude (V_{cm}) as well as its rate of rise (dV_{cm}/dt).

Agilent offers a variety of high CMR optocouplers for both analog and digital applications. Specifications for these optocouplers can be found in the current Optoelectronics Designer's Catalog.



$$I_B = C_{CM} \left(\frac{dV_{CM}}{dt} \right)$$

$$V_{BE} = V_{CM} \left(\frac{C_{CM}}{C_{CM} + C_{BE}} \right)$$

Figure 8. Common-Mode Interference Model.

Conclusion

In summary, common-mode noise problems can occur in almost any electrical circuit. The noise can be coupled from an external source, as in data communications, or be an inherent part of the design, as in switch-mode power supplies. Several techniques for reducing the effects of common-mode noise have been discussed. Agilent offers a wide variety of high CMR optocouplers to help solve these types of noise problems. Additionally, Applications Engineers and Field Sales Engineers are available for technical assistance and product support.

www.semiconductor.agilent.com

Data subject to change.
Copyright © 1999 Agilent Technologies Inc.

Obsoletes 5091-1866E

5965-5979E (11/99)

SUNSTAR 商斯达实业集团是集研发、生产、工程、销售、代理经销、技术咨询、信息服务等为一体的高科技企业，是专业高科技电子产品生产厂家，是具有 10 多年历史的专业电子元器件供应商，是中国最早和最大的仓储式连锁规模经营大型综合电子零部件代理分销商之一，是一家专业代理和分销世界各大品牌 IC 芯片和电子元器件的连锁经营综合性国际公司，专业经营进口、国产名厂名牌电子元件，型号、种类齐全。在香港、北京、深圳、上海、西安、成都等全国主要电子市场设有直属分公司和产品展示展销窗口门市部专卖店及代理分销商，已在全国范围内建成强大统一的供货和代理分销网络。我们专业代理经销、开发生产电子元器件、集成电路、传感器、微波光电元器件、工控机/DOC/DOM 电子盘、专用电路、单片机开发、MCU/DSP/ARM/FPGA 软件硬件、二极管、三极管、模块等，是您可靠的一站式现货配套供应商、方案提供商、部件功能模块开发配套商。商斯达实业公司拥有庞大的资料库，有数位毕业于著名高校——有中国电子工业摇篮之称的西安电子科技大学（西军电）并长期从事国防尖端科技研究的高级工程师为您精挑细选、量身订做各种高科技电子元器件，并解决各种技术问题。

微波光电部专业代理经销高频、微波、光纤、光电元器件、组件、部件、模块、整机；电磁兼容元器件、材料、设备；微波 CAD、EDA 软件、开发测试仿真工具；微波、光纤仪器仪表。欢迎国外高科技微波、光纤厂商将优秀产品介绍到中国、共同开拓市场。长期大量现货专业批发高频、微波、卫星、光纤、电视、CATV 器件：晶振、VCO、连接器、PIN 开关、变容二极管、开关二极管、低噪晶体管、功率电阻及电容、放大器、功率管、MMIC、混频器、耦合器、功分器、振荡器、合成器、衰减器、滤波器、隔离器、环行器、移相器、调制解调器；光电子器件和组件：红外发射管、红外接收管、光电开关、光敏管、发光二极管和发光二极管组件、半导体激光二极管和激光器组件、光电探测器和光接收组件、光发射接收模块、光纤激光器和光放大器、光调制器、光开关、DWDM 用光发射和接收器件、用户接入系统光收发器件与模块、光纤连接器、光纤跳线/尾纤、光衰减器、光纤适配器、光隔离器、光耦合器、光环行器、光复用器/转换器；无线收发芯片和模组、蓝牙芯片和模组。

更多产品请看本公司产品专用销售网站：

商斯达微波光电产品网：[HTTP://www.rfoe.net/](http://www.rfoe.net/)

商斯达中国传感器科技信息网：<http://www.sensor-ic.com/>

商斯达工控安防网：<http://www.pc-ps.net/>

商斯达电子元器件网：<http://www.sunstare.com/>

商斯达消费电子产品网：<http://www.icasic.com/>

商斯达实业科技产品网：<http://www.sunstars.cn/> 射频微波光电元器件销售热线：

地址：深圳市福田区福华路福庆街鸿图大厦 1602 室

电话：0755-83396822 83397033 83398585 82884100

传真：0755-83376182 (0) 13823648918 MSN: SUNS8888@hotmail.com

邮编：518033 E-mail:szss20@163.com QQ: 195847376

深圳赛格展销部：深圳华强北路赛格电子市场 2583 号 电话：0755-83665529 25059422

技术支持：0755-83394033 13501568376

欢迎索取免费详细资料、设计指南和光盘；产品凡多，未能尽录，欢迎来电查询。

北京分公司：北京海淀区知春路 132 号中发电子大厦 3097 号

TEL: 010-81159046 82615020 13501189838 FAX: 010-62543996

上海分公司：上海市北京东路 668 号上海赛格电子市场 D125 号

TEL: 021-28311762 56703037 13701955389 FAX: 021-56703037

西安分公司：西安高新开发区 20 所(中国电子科技集团导航技术研究所)

西安劳动南路 88 号电子商城二楼 D23 号

TEL: 029-81022619 13072977981 FAX:029-88789382