

APPLICATION NOTE

**A wideband power amplifier
(25 – 110 MHz) with the MOS
transistor BLF245**

NCO8602

**A wideband power amplifier (25 – 110 MHz)
with the MOS transistor BLF245**

**Application Note
NCO8602**

CONTENTS

1	SUMMARY
2	INTRODUCTION
3	DESIGN OF THE AMPLIFIER
3.1	General remarks
3.2	Output circuit
3.3	Input circuit
4	MEASURED PERFORMANCE
4.1	Constant input power
4.2	Constant output power
4.3	Constant frequency
4.4	Stability
4.5	Mismatch
5	CONCLUSIONS
6	REFERENCES
7	APPENDIX

A wideband power amplifier (25 – 110 MHz) with the MOS transistor BLF245

Application Note
NCO8602

1 SUMMARY

For military communication purposes a wideband class-AB power amplifier has been designed around the BLF 245 with the frequency range 25 to 110 MHz.

The DC-setting is $V_D = 28$ V and $I_{DQ} = 200$ mA.

In the input and output matching networks asymmetrical 1 : 4 transformers on 4C6 ferrite core material have been applied.

Table 1 The main properties are:

		UNIT
gain at P_O	17.7 ± 0.5	dB
bandwidth	25 – 110	MHz
V_D	28	V
I_{DQ}	200	mA
efficiency	55 – 67	%
input VSWR	≤ 1.6	

2 INTRODUCTION

The BLF245 is an RF power MOS transistor for the VHF frequency range in a SOT123 encapsulation.

For application in military communication equipment a wideband power amplifier has been developed with a frequency range from 25 to 110 MHz. The transistor operates in class-AB at $V_{DS} = 28$ V and a quiescent current $I_{DQ} = 200$ mA. The useful output power is in the range of 25 – 30 W.

3 DESIGN OF THE AMPLIFIER

3.1 General remarks

The amplifier has been developed with 1 : 4 impedance transformers in the input as well as in the output circuit. These transformers of the transmission line type with a ferrite core transform the 50 Ω system impedance at the input and output to about 12.5 Ω . An LC compensation circuit has been applied to transform this 12.5 Ω to the optimum load impedance of the transistor. At the input a circuit matches the 12.5 Ω to the gate impedance of the transistor and also takes care of a flat gain over the whole bandwidth.

3.2 Output circuit

For an optimum alignment of the output circuit the transistor has been replaced by a dummy. This dummy consists of a resistor of 12 Ω parallel with a capacitor of 82 pF. The real part of the dummy has been determined by the available drain voltage and the required output power.

$$R_L = \frac{V_D^2}{2P_O} \rightarrow R_L = \frac{28^2}{2.30} = 13.1 \Omega$$

This is near to the value of 12.5 Ω mentioned in Section 3.1. The capacitor is about 15% higher than the output capacitance of the transistor. The RF choke at the drain side must have a sufficient high reactance at the lower end of the frequency range. Choosing this reactance appr. a factor 5 higher than the transistor loadresistance we get an inductance of 455 nH for L_4 .

The output capacitance of the transistor can be compensated according to the Appendix. The result is: $L_6 = 18.6$ nH and $C_{11} = 82$ pF. To transform the achieved 12.5 Ω to the 50 Ω system impedance an asymmetrical 1 : 4 transformer has

A wideband power amplifier (25 – 110 MHz)
with the MOS transistor BLF245

Application Note
NCO8602

been used. Information about this kind of transformation can be found in Refs 1 and 2. For the transformer a toroid of 4C6 material has been used. Dimensions: $23 \times 14 \times 7$ mm. On this toroid 5 turns of two 0.7 mm twisted enamelled Cu-wires are uniformly distributed and connected as shown in Fig.1.

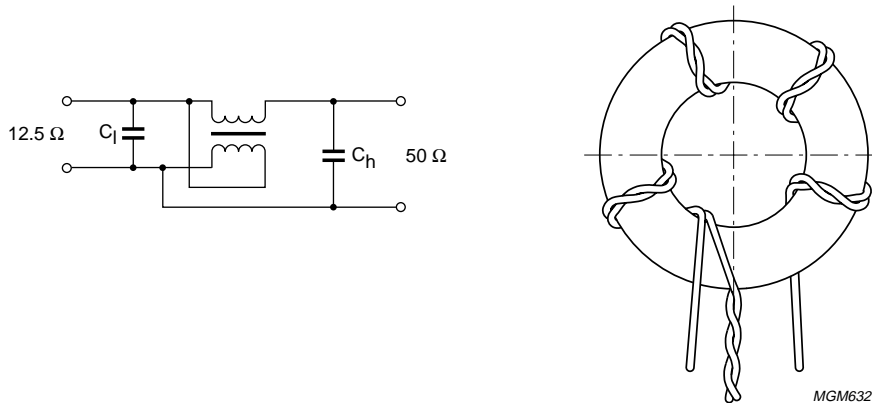


Fig.1 Output transformer.

With the aid of a network analyser the transformer has been corrected for higher frequencies. With $C_1 = 68$ pF and $C_h = 12$ pF the return losses in the range 20 – 140 MHz are better than -30 dB ($VSWR < 1.07$). Optimization of the complete output circuit has been carried out by measuring the return losses at the output with the network analyser under swept condition (see Fig.2).

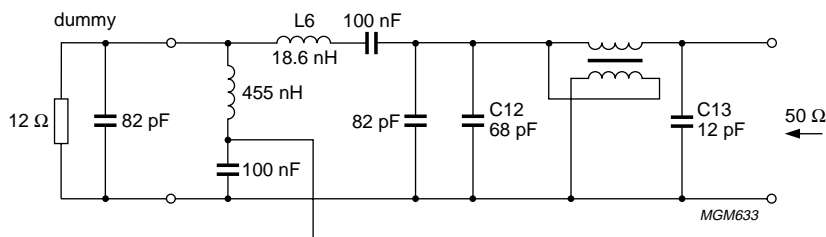


Fig.2 Output circuit before optimization.

A wideband power amplifier (25 – 110 MHz) with the MOS transistor BLF245

Application Note NCO8602

Figure 4 shows the return losses of the output circuit before and after practical optimization. By decreasing L_6 to 10 nH and C_{12} to 43 pF the return losses improved about 10 dB in the frequency range 20 to 140 MHz to -20 dB (VSWR = 1.22).

3.3 Input circuit

As mentioned in Section 3.1 a special circuit matches the input impedance of the transistor to 12.5Ω and also takes care of a sufficient flat gain over the whole bandwidth. To determine the gate-source impedance and the gain of the transistor in combination with the output circuit described in Section 3.2, narrow band input circuits have been used at several frequencies. By tuning such an auxiliary input circuit the gain of the transistor in combination with the output circuit can be measured directly. In case the input circuit has been tuned the output impedance of this circuit is the conjugate complex of the input impedance of the transistor.

Figs 5 to 7 give the input impedance and the gain of the transistor in combination with the output circuit. The matching network chosen at the input of the transistor is depicted in Fig.3.

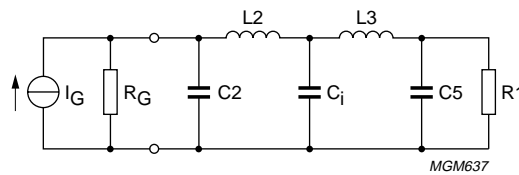


Fig.3 Input matching circuit.

C_i represents the input capacitance of the BLF245 which is appr. 220 pF (see Fig.6). Across this capacitor a constant voltage versus frequency from 25 up to 110 MHz has to be developed. Provided C_i is an ideal capacitance the optimum dimensioning of this network is as follows:

$$R_G = R_1 = 1.6/(\omega_c \times C_i) = 10.5 \Omega$$

$$C_2 = C_5 = 0.386 C_i = 85 \text{ pF}$$

$$L_2 = L_3 = 0.997 R_1/\omega_c = 15.1 \text{ nH.}$$

in which ω_c is the maximum angular frequency. The calculated voltage variation across C_i is ± 0.36 dB and the maximum VSWR seen by the generator is 1.36. Deviating from this calculation, for the ease of transformation, R_G and R_1 have been chosen 12.5Ω . Further the resistive component of C_i is substantial especially at higher frequencies.

Therefore the values of the components have been changed in a computer optimization program for a maximally flat gain and a low input VSWR. This optimization results in a gain of 17.5 dB with a variation of ± 0.17 dB and a maximum VSWR = 1.177. These results have been achieved by changing the components of Fig.3:

$$C_2 = 97 \text{ pF, } C_5 = 102 \text{ pF, } L_2 = 17.6 \text{ nH, } L_3 = 29 \text{ nH and } R_1 = 12 \Omega.$$

The remaining part of the transformation from 12.5Ω to the 50Ω system impedance has been accomplished with a transformer similar to the output transformer. However the input transformer has been wound on a core consisting of 2 small toroids of 4C6 material ($6 \times 4 \times 2$ mm).

A wideband power amplifier (25 – 110 MHz) with the MOS transistor BLF245

Application Note
NCO8602

On this core 6 turns of two 0.25 mm twisted enamelled Cu-wires are uniformly distributed similar to the output transformer described in Section 3.2. (see Fig.1). With correction capacitors at the high ohmic and the low ohmic side of respectively 8.2 and 47 pF the return losses in the range 20 – 140 MHz are better than -27 dB ($VSWR \leq 1.1$).

For the practical optimization of the complete input circuit the transistor has been adjusted at $V_D = 28$ V and a quiescent current $I_{DQ} = 200$ mA. The gain and input return losses have been measured in the frequency range of 20 up to 110 MHz.

The best results have been achieved by changing the correction capacitor C_3 from 47 to 62 pF and by executing R_1 as a parallel connection of 5 resistors of 61.9 Ω .

Figure 8 gives the complete circuit diagram of the BLF245 wideband amplifier and Table 3 gives the corresponding parts list.

4 MEASURED PERFORMANCE

4.1 Constant input power

Figs 9 to 11 give the gain, efficiency and output power versus the frequency at a constant input power ($P_i = 0.5$ W).

In the frequency range of 25 to 110 MHz the gain is 17.2 to 17.9 dB, the efficiency 55 to 70% and the output power 26.5 to 30.5 W.

4.2 Constant output power

Figs 12 and 13 give the gain and efficiency versus the frequency at a constant power ($P_o = 27.5$ W) and heatsink temperatures of 25 and 70 °C.

Figs 14 and 15 give the input return losses and the 2e and 3e harmonics of the output signal also versus the frequency. The return losses have been measured at a heatsink temperature of 25 and 70 °C. The harmonics have been measured at 25 °C. By increasing the heatsink temperature from 25 to 70 °C the gain decreases about 1.2 dB. The heatsink temperature has no influence on efficiency and return losses. At 25 °C the gain of the amplifier varies from 17.2 to 18.2 dB, the efficiency from 55 to 67% and the return losses at the input are at least -14 dB ($VSWR \leq 1.6$). Also the 2e and 3e harmonics are at least 14 dB down.

4.3 Constant frequency

Figs 16 to 18 give the output power versus input power and the gain and efficiency versus power at 4 frequencies.

4.4 Stability

Applying an R&S PTU low pass filter at the output of the amplifier stability measurements have been carried out. Choosing a low pass frequency as close as possible above the measuring frequency the amplifier was stable through the whole frequency range of 25 to 110 MHz.

4.5 Mismatch

The amplifier has been tested for load mismatch at all phase angles. Up to $VSWR = 10 : 1$ the amplifier is stable. At $VSWR = 20 : 1$ the amplifier is only stable below 70 MHz. However also at higher frequencies degradation of the RF performance did not occur.

5 CONCLUSIONS

Based on the results presented in this report it may be concluded that it is quite possible to design a wideband amplifier from 25 to 110 MHz with a very good performance using the MOS transistor BLF 245.

A wideband power amplifier (25 – 110 MHz)
with the MOS transistor BLF245

Application Note
NCO8602

Table 2 The main properties are:

		UNIT
Bandwidth	25 – 110	MHz
V_D	28	V
I_{DQ}	200	mA
Gain ($P_O = 27.5$ W)	17.7 ± 0.5	dB
Efficiency	55 – 67	%
Input VSWR	≤ 1.6	

6 REFERENCES

Ref.1.

A.H. Hilbers

Application report ECO6907: Design of HF wideband Power Transformers.

Ref.2.

A.H. Hilbers

Application report ECO7703: Power Transformers for the Frequency Range 30 – 80 MHz

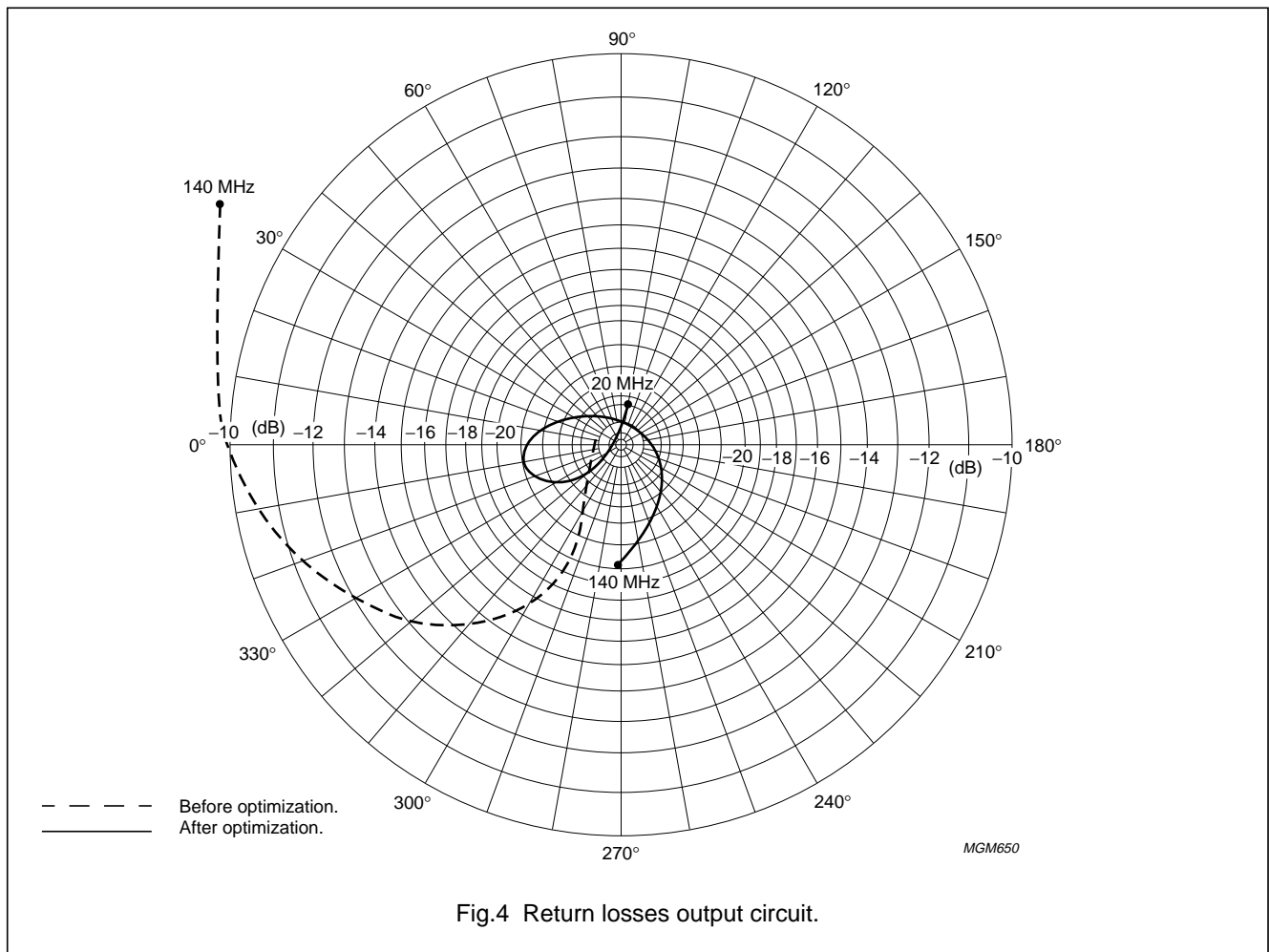


Fig.4 Return losses output circuit.

A wideband power amplifier (25 – 110 MHz)
with the MOS transistor BLF245

Application Note
NCO8602

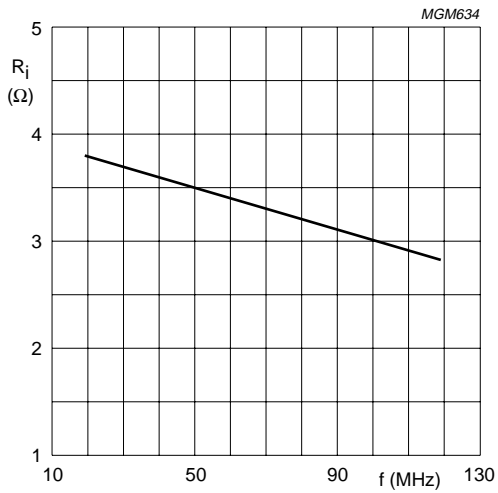


Fig.5 Real part of input impedance of loaded transistor.

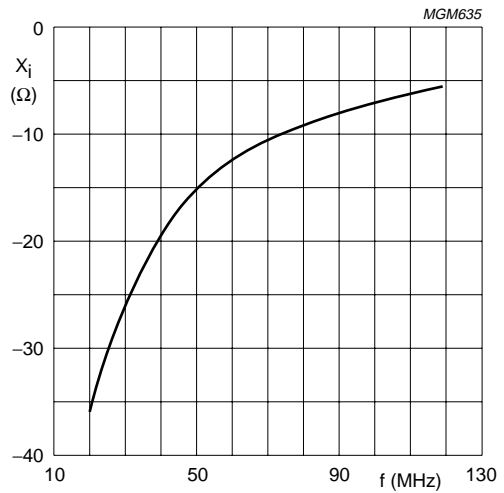


Fig.6 Imaginary part of input impedance of loaded transistor.

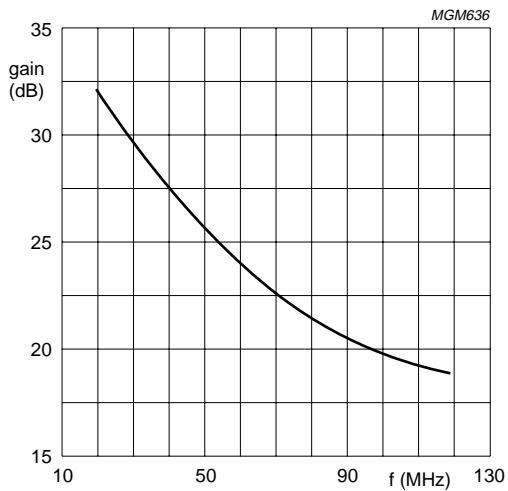


Fig.7 Gain of loaded transistor.

A wideband power amplifier (25 – 110 MHz)
with the MOS transistor BLF245

Application Note
NCO8602

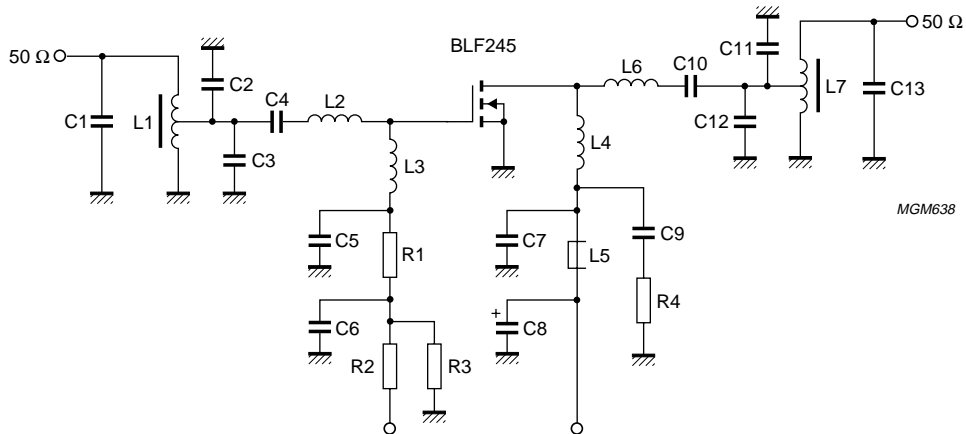


Fig.8 Circuit diagram of the BLF245 wideband amplifier.

A wideband power amplifier (25 – 110 MHz) with the MOS transistor BLF245

Application Note NCO8602

Table 3 Parts list of the BLF245 wideband amplifier

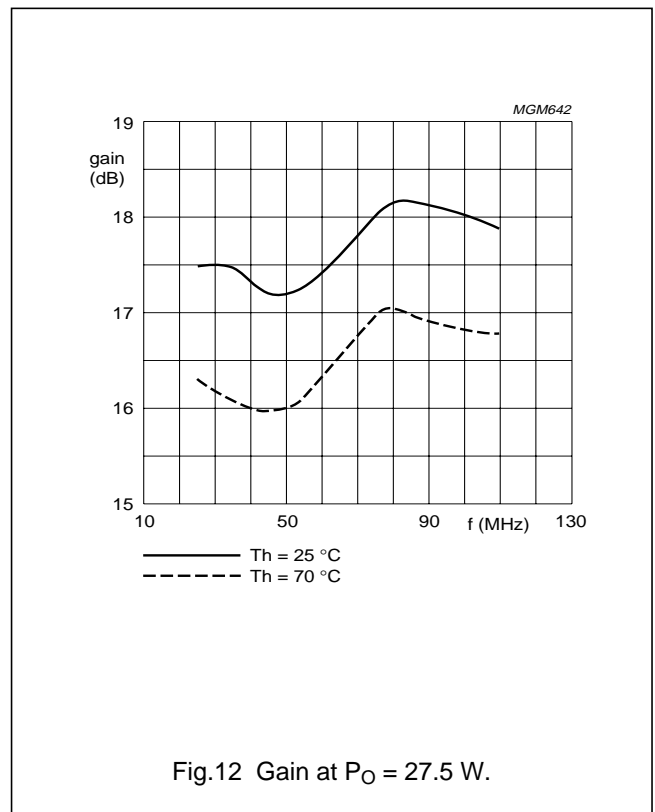
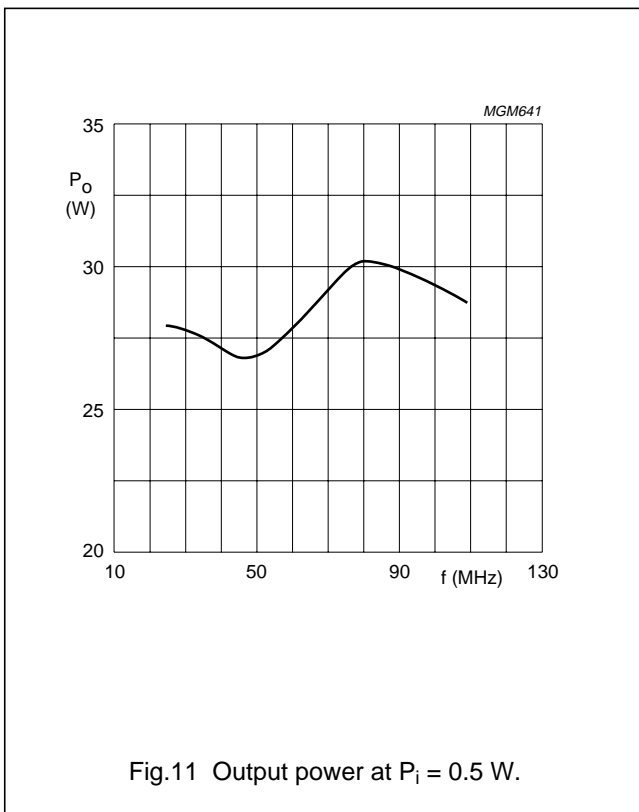
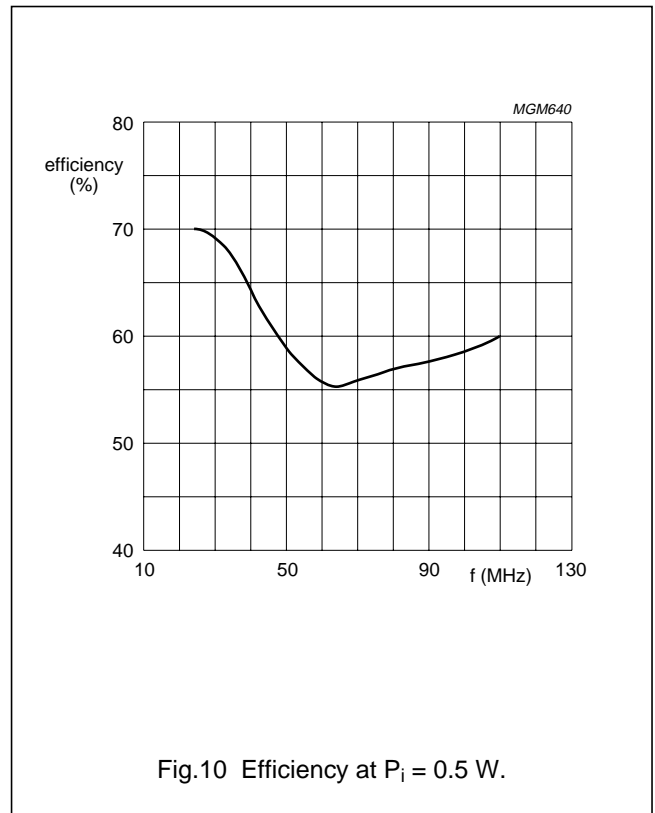
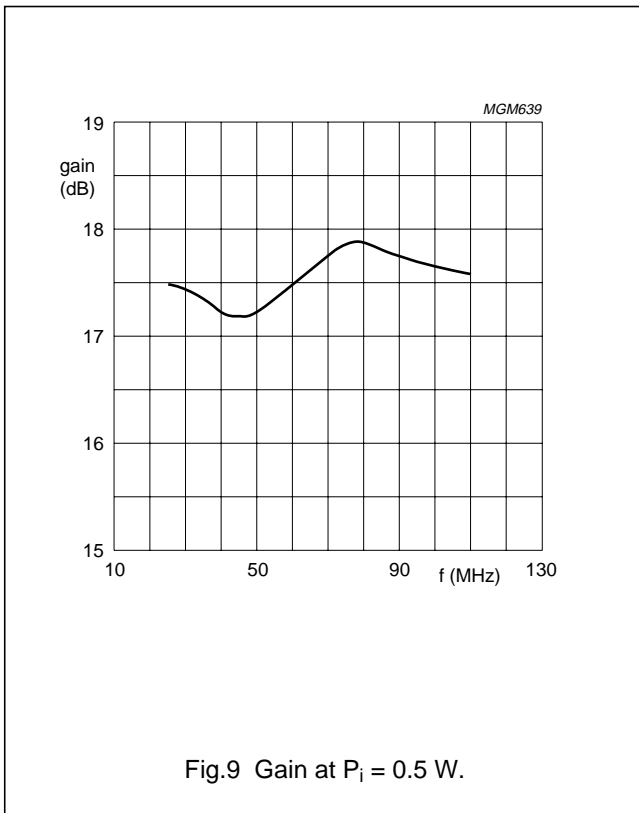
WIDEBAND POWER AMPLIFIER WITH BLF245 (f = 25 – 110 MHz)	
C1 = 8.2 pF multilayer ceramic chip capacitor; note 1	
C2 – C5 = 100 pF multilayer ceramic chip capacitor; note 1	
C3 = 62 pF multilayer ceramic chip capacitor; note 1	
C4 = C10 = 10 nF multilayer ceramic chip capacitor	cat. no. 2222 852 47103
C6 = C7 = 100 nF multilayer ceramic chip capacitor	cat. no. 2222 852 47104
C8 = 2.2 uF electrolytic capacitor	
C9 = 3 × 100 nF multilayer ceramic chip capacitor	cat. no. 2222 852 47104
C11 = 82 pF multilayer ceramic chip capacitor; note 1	
C12 = 43 pF multilayer ceramic chip capacitor; note 1	
C13 = 12 pF multilayer ceramic chip capacitor; note 1	
L1 = 2 Ferroxcube toroids, grade 4C6 (6 × 4 × 2 mm) with 6 turns of 2 × 0.25 mm twisted enamelled Cu-wire (see Fig.1)	cat. no. 4322 020 97160
L2 = 17.6 nH, 2 turns enamelled Cu-wire (0.6 mm) int.dia.: 3 mm, length 2.5 mm, leads 2 × 5 mm	
L3 = 28.8 nH, 3 turns enamelled Cu-wire (0,6 mm) int.dia.: 3 mm, length 3.2 mm, leads 2 × 5mm	
L4 = 455 nH, 12 turns enamelled Cu-wire (1 mm) int.dia.: 7 mm, length 16.5 mm, leads 2 × 5 mm	
L5 = Ferroxcube h.f.choke, grade 3B	cat. no. 4312 020 36642
L6 = 10 nH, 1 turn enamelled Cu-wire (1 mm) int.dia.: 3 mm leads 2 × 3 mm	
L7 = Ferroxcube toroid, grade 4C6 (23 × 14 × 7 mm) with 5 turns of 2 × 0.7 mm twisted enamelled Cu-wire (see Fig.1)	cat. no. 4322 020 97190
R1 = 12.4 Ω, parallel connection of 5 metal film resistors 61.9 Ω	cat. no. 2322 151 76199
R2 = 1 KΩ, metal film resistor	cat. no. 2322 151 71002
R3 = 1 MΩ, metal film resistor	cat. no. 2322 151 71005
R4 = 10 Ω, metal film resistor	cat. no. 2322 153 51009
Printed-circuit board: double Cu-clad, 1.6 mm epoxy fibre-glass ($\epsilon_r = 4.5$)	

Note

1. American Technical Ceramics type 100B or capacitor of same quality.

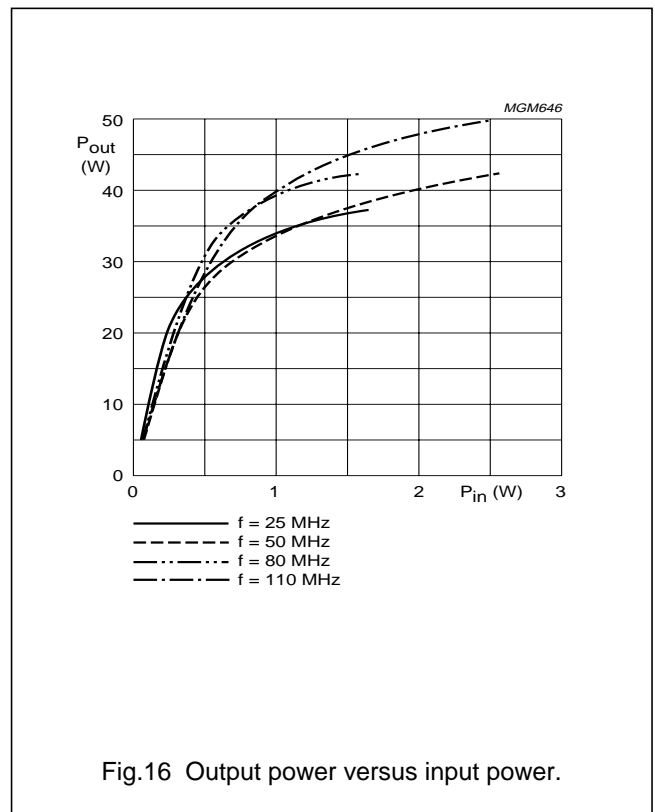
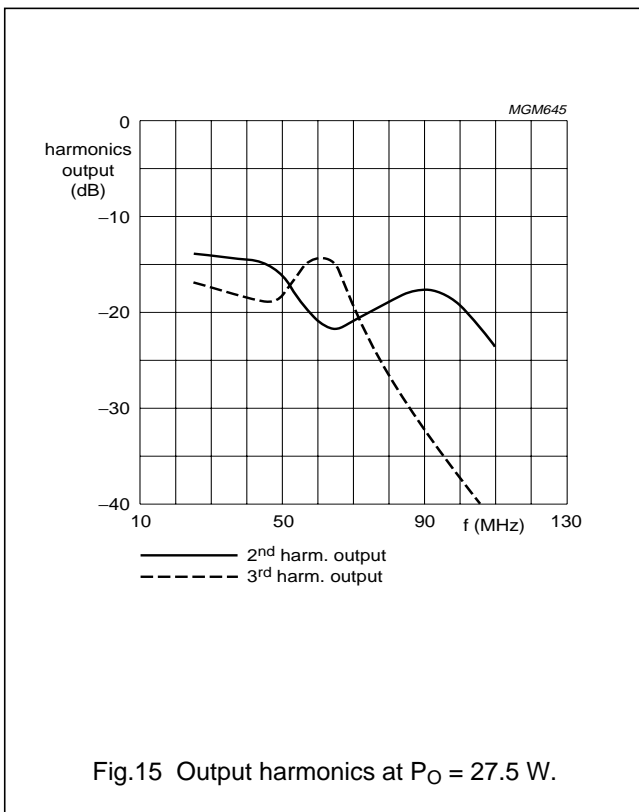
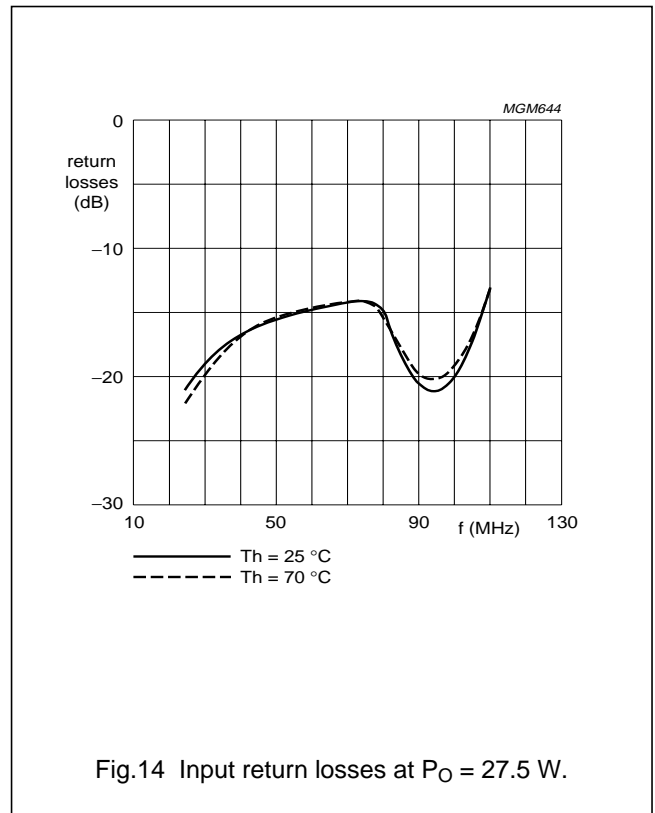
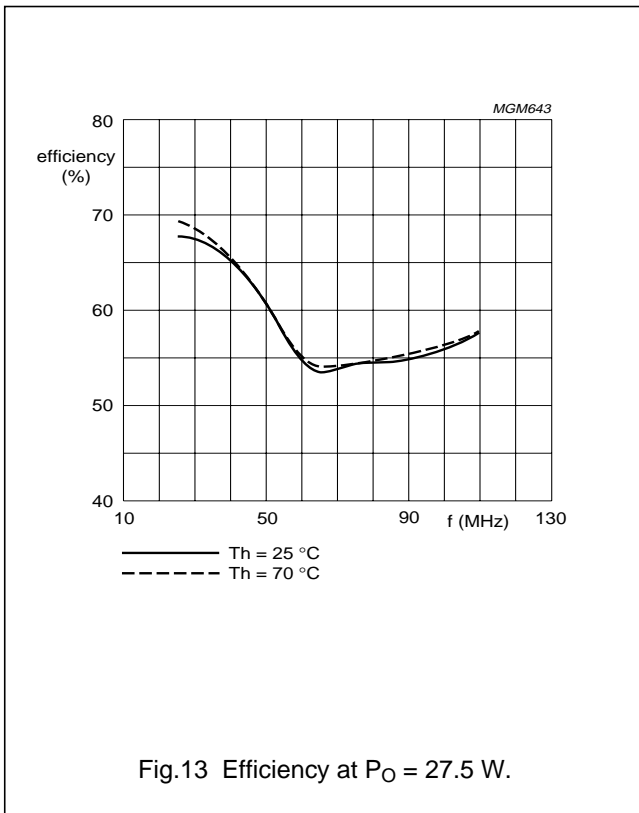
A wideband power amplifier (25 – 110 MHz)
with the MOS transistor BLF245

Application Note
NCO8602



A wideband power amplifier (25 – 110 MHz)
with the MOS transistor BLF245

Application Note
NCO8602



A wideband power amplifier
(25 – 110 MHz) with the MOS transistor

Application Note
NCO8602

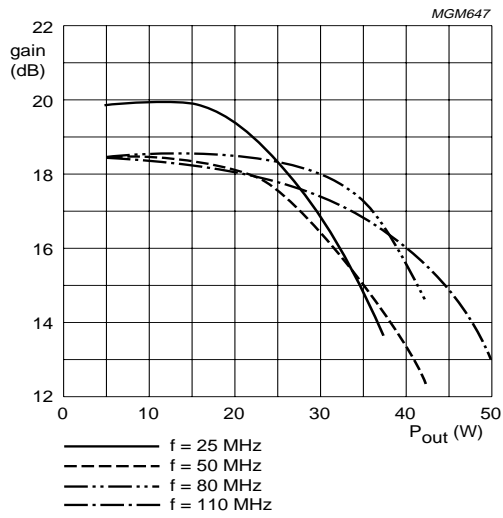


Fig.17 Gain versus output power.

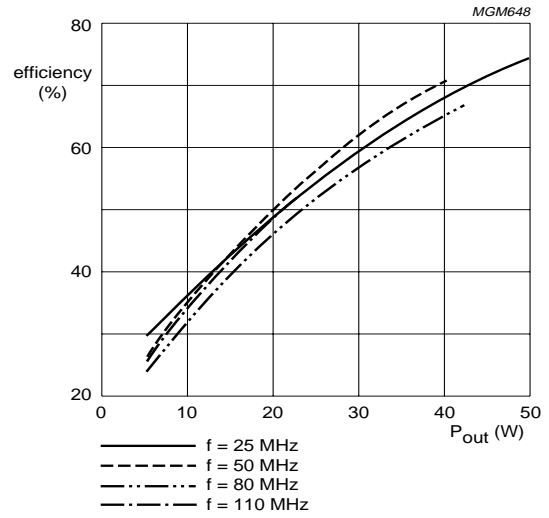


Fig.18 Efficiency versus output power.

A wideband power amplifier (25 – 110 MHz) with the MOS transistor BLF245

Application Note
NCO8602

7 APPENDIX

The output capacitance of a transistor can be compensated over a certain bandwidth by absorbing it in a low-pass Chebyshev π -section.

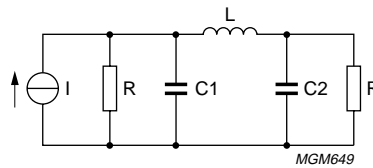


Fig.19

If C_1 is the transistor output capacitance the components L and C_2 must be added.

$$C_2 = C_1 = C$$

The normalized value of C is: $A = \omega_m CR$

In which $\omega_m = 2\pi f_{\max}$

Now we can calculate the normalized value of L with:

$$B = 8A/(3A^2 + 4)$$

where $B = \omega_m L/R$

The maximum VSWR of this network can be calculated with the following procedure.

1. Determine $\gamma = \frac{1}{A}$
2. $X = \gamma + \sqrt{\gamma^2 + 1}$
3. $VSWR = \left\{ \frac{X^3 + 1}{X^3 - 1} \right\}^2$

In our amplifier:

$$R = 12.5 \Omega$$

$$C = 82 \text{ pF}$$

This gives:

$$A = 0.784$$

$$B = 1.029$$

$$L = 18.62 \text{ nH}$$

$$\gamma = 1.412$$

$$X = 3.142$$

$$VSWR = 1.138$$

Philips Semiconductors – a worldwide company

Argentina: see South America

Australia: 34 Waterloo Road, NORTH RYDE, NSW 2113,
Tel. +61 2 9805 4455, Fax. +61 2 9805 4466

Austria: Computerstr. 6, A-1101 WIEN, P.O. Box 213, Tel. +43 160 1010,
Fax. +43 160 101 1210

Belarus: Hotel Minsk Business Center, Bld. 3, r. 1211, Volodarski Str. 6,
220050 MINSK, Tel. +375 172 200 733, Fax. +375 172 200 773

Belgium: see The Netherlands

Brazil: see South America

Bulgaria: Philips Bulgaria Ltd., Energoproject, 15th floor,
51 James Bourchier Blvd., 1407 SOFIA,
Tel. +359 2 689 211, Fax. +359 2 689 102

Canada: PHILIPS SEMICONDUCTORS/COMPONENTS,
Tel. +1 800 234 7381

China/Hong Kong: 501 Hong Kong Industrial Technology Centre,
72 Tat Chee Avenue, Kowloon Tong, HONG KONG,
Tel. +852 2319 7888, Fax. +852 2319 7700

Colombia: see South America

Czech Republic: see Austria

Denmark: Prags Boulevard 80, PB 1919, DK-2300 COPENHAGEN S,
Tel. +45 32 88 2636, Fax. +45 31 57 0044

Finland: Sinikalliontie 3, FIN-02630 ESPOO,
Tel. +358 9 615800, Fax. +358 9 61580920

France: 51 Rue Carnot, BP317, 92156 SURESNES Cedex,
Tel. +33 1 40 99 6161, Fax. +33 1 40 99 6427

Germany: Hammerbrookstraße 69, D-20097 HAMBURG,
Tel. +49 40 23 53 60, Fax. +49 40 23 536 300

Greece: No. 15, 25th March Street, GR 17778 TAVROS/ATHENS,
Tel. +30 1 4894 339/239, Fax. +30 1 4814 240

Hungary: see Austria

India: Philips INDIA Ltd, Band Box Building, 2nd floor,
254-D, Dr. Annie Besant Road, Worli, MUMBAI 400 025,
Tel. +91 22 493 8541, Fax. +91 22 493 0966

Indonesia: see Singapore

Ireland: Newstead, Clonskeagh, DUBLIN 14,
Tel. +353 1 7640 000, Fax. +353 1 7640 200

Israel: RAPAC Electronics, 7 Kehilat Saloniki St, PO Box 18053,
TEL AVIV 61180, Tel. +972 3 645 0444, Fax. +972 3 649 1007

Italy: PHILIPS SEMICONDUCTORS, Piazza IV Novembre 3,
20124 MILANO, Tel. +39 2 6752 2531, Fax. +39 2 6752 2557

Japan: Philips Bldg 13-37, Kohnan 2-chome, Minato-ku, TOKYO 108,
Tel. +81 3 3740 5130, Fax. +81 3 3740 5077

Korea: Philips House, 260-199 Itaewon-dong, Yongsan-ku, SEOUL,
Tel. +82 2 709 1412, Fax. +82 2 709 1415

Malaysia: No. 76 Jalan Universiti, 46200 PETALING JAYA, SELANGOR,
Tel. +60 3 750 5214, Fax. +60 3 757 4880

Mexico: 5900 Gateway East, Suite 200, EL PASO, TEXAS 79905,
Tel. +9-5 800 234 7381

Middle East: see Italy

Netherlands: Postbus 90050, 5600 PB EINDHOVEN, Bldg. VB,
Tel. +31 40 27 82785, Fax. +31 40 27 88399

New Zealand: 2 Wagener Place, C.P.O. Box 1041, AUCKLAND,
Tel. +64 9 849 4160, Fax. +64 9 849 7811

Norway: Box 1, Manglerud 0612, OSLO,
Tel. +47 22 74 8000, Fax. +47 22 74 8341

Philippines: Philips Semiconductors Philippines Inc.,
106 Valero St. Salcedo Village, P.O. Box 2108 MCC, MAKATI,
Metro MANILA, Tel. +63 2 816 6380, Fax. +63 2 817 3474

Poland: Ul. Lukiska 10, PL 04-123 WARSZAWA,
Tel. +48 22 612 2831, Fax. +48 22 612 2327

Portugal: see Spain

Romania: see Italy

Russia: Philips Russia, Ul. Usatcheva 35A, 119048 MOSCOW,
Tel. +7 095 755 6918, Fax. +7 095 755 6919

Singapore: Lorong 1, Toa Payoh, SINGAPORE 1231,
Tel. +65 350 2538, Fax. +65 251 6500

Slovakia: see Austria

Slovenia: see Italy

South Africa: S.A. PHILIPS Pty Ltd., 195-215 Main Road Martindale,
2092 JOHANNESBURG, P.O. Box 7430 Johannesburg 2000,
Tel. +27 11 470 5911, Fax. +27 11 470 5494

South America: Al. Vicente Pinzon, 173, 6th floor,
04547-130 SÃO PAULO, SP, Brazil,
Tel. +55 11 821 2333, Fax. +55 11 821 2382

Spain: Balmes 22, 08007 BARCELONA,
Tel. +34 3 301 6312, Fax. +34 3 301 4107

Sweden: Kottbygatan 7, Akalla, S-16485 STOCKHOLM,
Tel. +46 8 632 2000, Fax. +46 8 632 2745

Switzerland: Allmendstrasse 140, CH-8027 ZÜRICH,
Tel. +41 1 488 2686, Fax. +41 1 488 3263

Taiwan: Philips Semiconductors, 6F, No. 96, Chien Kuo N. Rd., Sec. 1,
TAIPEI, Taiwan Tel. +886 2 2134 2865, Fax. +886 2 2134 2874

Thailand: PHILIPS ELECTRONICS (THAILAND) Ltd.,
209/2 Sanpavuth-Bangna Road Prakanong, BANGKOK 10260,
Tel. +66 2 745 4090, Fax. +66 2 398 0793

Turkey: Talatpasa Cad. No. 5, 80640 GÜLTEPE/ISTANBUL,
Tel. +90 212 279 2770, Fax. +90 212 282 6707

Ukraine: PHILIPS UKRAINE, 4 Patrice Lumumba str., Building B, Floor 7,
252042 KIEV, Tel. +380 44 264 2776, Fax. +380 44 268 0461

United Kingdom: Philips Semiconductors Ltd., 276 Bath Road, Hayes,
MIDDLESEX UB3 5BX, Tel. +44 181 730 5000, Fax. +44 181 754 8421

United States: 811 East Arques Avenue, SUNNYVALE, CA 94088-3409,
Tel. +1 800 234 7381

Uruguay: see South America

Vietnam: see Singapore

Yugoslavia: PHILIPS, Trg N. Pasica 5/v, 11000 BEOGRAD,
Tel. +381 11 625 344, Fax. +381 11 635 777

For all other countries apply to: Philips Semiconductors,
International Marketing & Sales Communications, Building BE-p, P.O. Box 218,
5600 MD EINDHOVEN, The Netherlands, Fax. +31 40 27 24825

Internet: <http://www.semiconductors.philips.com>

© Philips Electronics N.V. 1998

SCA57

All rights are reserved. Reproduction in whole or in part is prohibited without the prior written consent of the copyright owner.

The information presented in this document does not form part of any quotation or contract, is believed to be accurate and reliable and may be changed without notice. No liability will be accepted by the publisher for any consequence of its use. Publication thereof does not convey nor imply any license under patent- or other industrial or intellectual property rights.

Printed in The Netherlands

Date of release: 1998 Mar 23

Let's make things better.

**Philips
Semiconductors**



PHILIPS

SUNSTAR 商斯达实业集团是集研发、生产、工程、销售、代理经销、技术咨询、信息服务等为一体的高科技企业，是专业高科技电子产品生产厂家，是具有 10 多年历史的专业电子元器件供应商，是中国最早和最大的仓储式连锁规模经营大型综合电子零部件代理分销商之一，是一家专业代理和分销世界各大品牌 IC 芯片和电子元器件的连锁经营综合性国际公司，专业经营进口、国产名厂名牌电子元件，型号、种类齐全。在香港、北京、深圳、上海、西安、成都等全国主要电子市场设有直属分公司和产品展示展销窗口门市部专卖店及代理分销商，已在全国范围内建成强大统一的供货和代理分销网络。我们专业代理经销、开发生产电子元器件、集成电路、传感器、微波光电元器件、工控机/DOC/DOM 电子盘、专用电路、单片机开发、MCU/DSP/ARM/FPGA 软件硬件、二极管、三极管、模块等，是您可靠的一站式现货配套供应商、方案提供商、部件功能模块开发配套商。商斯达实业公司拥有庞大的资料库，有数位毕业于著名高校——有中国电子工业摇篮之称的西安电子科技大学（西军电）并长期从事国防尖端科技研究的高级工程师为您精挑细选、量身订做各种高科技电子元器件，并解决各种技术问题。

微波光电部专业代理经销高频、微波、光纤、光电元器件、组件、部件、模块、整机；电磁兼容元器件、材料、设备；微波 CAD、EDA 软件、开发测试仿真工具；微波、光纤仪器仪表。欢迎国外高科技微波、光纤厂商将优秀产品介绍到中国、共同开拓市场。长期大量现货专业批发高频、微波、卫星、光纤、电视、CATV 器件：晶振、VCO、连接器、PIN 开关、变容二极管、开关二极管、低噪晶体管、功率电阻及电容、放大器、功率管、MMIC、混频器、耦合器、功分器、振荡器、合成器、衰减器、滤波器、隔离器、环行器、移相器、调制解调器；光电子器件和组件：红外发射管、红外接收管、光电开关、光敏管、发光二极管和发光二极管组件、半导体激光二极管和激光器组件、光电探测器和光接收组件、光发射接收模块、光纤激光器和光放大器、光调制器、光开关、DWDM 用光发射和接收器件、用户接入系统光收发器件与模块、光纤连接器、光纤跳线/尾纤、光衰减器、光纤适配器、光隔离器、光耦合器、光环行器、光复用器/转换器；无线收发芯片和模组、蓝牙芯片和模组。

更多产品请看本公司产品专用销售网站：

商斯达中国传感器科技信息网：<http://www.sensor-ic.com/>

商斯达工控安防网：<http://www.pc-ps.net/>

商斯达电子元器件网：<http://www.sunstare.com/>

商斯达微波光电产品网：[HTTP://www.rfoe.net/](http://www.rfoe.net/)

商斯达消费电子产品网：<http://www.icasic.com/>

商斯达实业科技产品网：<http://www.sunstars.cn/> 微波元器件销售热线：

地址：深圳市福田区福华路福庆街鸿图大厦 1602 室

电话：0755-82884100 83397033 83396822 83398585

传真：0755-83376182 (0) 13823648918 MSN: SUNS8888@hotmail.com

邮编：518033 E-mail:szss20@163.com QQ: 195847376

深圳赛格展销部：深圳华强北路赛格电子市场 2583 号 电话：0755-83665529 25059422

技术支持：0755-83394033 13501568376

欢迎索取免费详细资料、设计指南和光盘；产品凡多，未能尽录，欢迎来电查询。

北京分公司：北京海淀区知春路 132 号中发电子大厦 3097 号

TEL: 010-81159046 82615020 13501189838 FAX: 010-62543996

上海分公司：上海市北京东路 668 号上海赛格电子市场 D125 号

TEL: 021-28311762 56703037 13701955389 FAX: 021-56703037

西安分公司：西安高新开发区 20 所(中国电子科技集团导航技术研究所)

西安劳动南路 88 号电子商城二楼 D23 号

TEL: 029-81022619 13072977981 FAX:029-88789382